

## Certificate of Verification

XL3t-69288

Reading No 1  
Mode Mining  
Time 2016-09-01 11:13  
Duration 122.72  
Units ppm  
Sigma Value 2  
Sequence Final  
Flags  
INV NR KG1  
OBJEKT TAFELGEMAELEN  
MATERIAL HOLZ METALL FASSUNG  
ANALYSESTELLE P1 NIMBUS RS  
MESSAUFBAU STATIV  
FILTER m30lo30hi30li30  
User Login Raquet



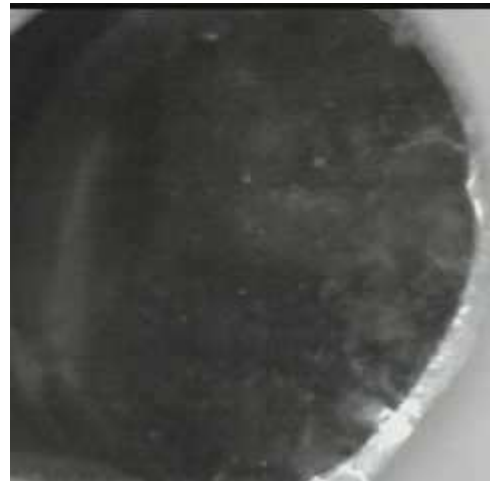
	ppm	+/-	Error
Ce	-339.000	+/-	49.086
La	1.000	+/-	22.491
Ba	1.000	+/-	24.273
Sb	19.555	+/-	9.161
Sn	42.168	+/-	5.299
Cd	16.199	+/-	3.674
Ag	9.067	+/-	2.460
Bal	894939.125	+/-	496.586
Nb	4.047	+/-	2.506
Zr	1.000	+/-	7.360
Y	1.000	+/-	1.464
Sr	61.983	+/-	2.379
Rb	11.288	+/-	4.264
Th	1.000	+/-	112.957
Bi	1.000	+/-	92.572
Au	2129.883	+/-	35.699
As	186.162	+/-	17.501
Se	1.000	+/-	4.489
Pb	761.214	+/-	15.442
Hg	20.224	+/-	4.407
Zn	52.606	+/-	9.740
Cu	155.146	+/-	13.104
Ni	1.000	+/-	16.930
Co	1.000	+/-	15.284
Fe	650.024	+/-	43.457
Mn	1.000	+/-	39.700
Cr	55.266	+/-	11.133
V	1.000	+/-	9.985
Ti	1.000	+/-	73.887
Ca	77077.000	+/-	487.300
K	638.630	+/-	81.745
Al	1.000	+/-	541.919
P	13889.451	+/-	181.302
Si	3026.141	+/-	267.726
Cl	610.281	+/-	20.195
S	5644.532	+/-	67.143
Mg	1.000	+/-	3955.675

Supervised By: \_\_\_\_\_

## Certificate of Verification

XL3t-69288

Reading No 2  
Mode Mining  
Time 2016-09-01 11:16  
Duration 121.95  
Units ppm  
Sigma Value 2  
Sequence Final  
Flags  
INV NR KG1  
OBJEKT TAFELGEMAELEN  
MATERIAL HOLZ METALL FASSUNG  
ANALYSESTELLE P2 RS HAMMER  
MESSAUFBAU STATIV  
FILTER m30lo30hi30li30  
User Login Raquet



	ppm	+/-	Error
Ce	-339.000	+/-	60.470
La	1.000	+/-	27.746
Ba	1.000	+/-	29.891
Sb	1.000	+/-	10.984
Sn	1.000	+/-	8.863
Cd	16.732	+/-	4.524
Ag	560.390	+/-	11.548
Bal	893551.313	+/-	519.633
Nb	1.000	+/-	3.917
Zr	1.000	+/-	10.108
Y	1.000	+/-	2.026
Sr	149.415	+/-	3.621
Rb	1.000	+/-	5.349
Th	1.000	+/-	152.799
Bi	1.000	+/-	143.319
Au	1.000	+/-	6.288
As	493.849	+/-	26.450
Se	1.000	+/-	3.101
Pb	1609.637	+/-	24.115
Hg	50.581	+/-	4.820
Zn	27.279	+/-	7.529
Cu	1838.534	+/-	37.352
Ni	1.000	+/-	18.778
Co	1.000	+/-	19.968
Fe	1449.730	+/-	59.193
Mn	1.000	+/-	42.928
Cr	1.000	+/-	18.988
V	1.000	+/-	15.520
Ti	113.181	+/-	62.294
Ca	78708.203	+/-	542.992
K	1443.846	+/-	136.825
Al	977.319	+/-	520.643
P	330.215	+/-	83.558
Si	9930.386	+/-	406.403
Cl	3035.116	+/-	47.853
S	5714.255	+/-	81.175
Mg	1.000	+/-	5443.455

Supervised By: \_\_\_\_\_

## Certificate of Verification

XL3t-69288

Reading No 3  
Mode Mining  
Time 2016-09-01 11:20  
Duration 120.82  
Units ppm  
Sigma Value 2  
Sequence Final  
Flags  
INV NR KG1  
OBJEKT TAFELGEMAELEN  
MATERIAL HOLZ METALL FASSUNG  
ANALYSESTELLE P3 RS NIMBUS  
MESSAUFBAU STATIV  
FILTER m30lo30hi30li30  
User Login Raquet



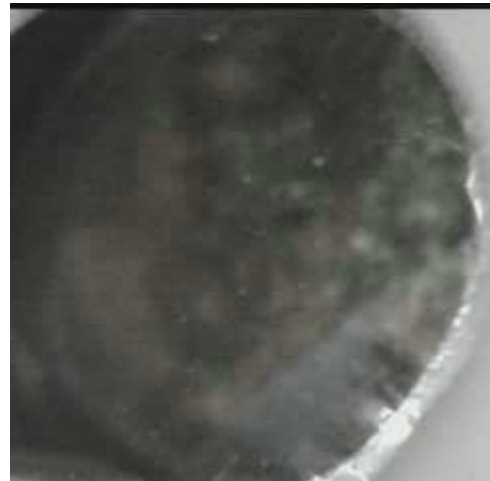
	ppm	+/-	Error
Ce	-339.000	+/-	78.000
La	1.000	+/-	36.042
Ba	1.000	+/-	38.645
Sb	1.000	+/-	21.238
Sn	11.862	+/-	7.279
Cd	8.651	+/-	5.301
Ag	6.512	+/-	3.564
Bal	903560.813	+/-	567.635
Nb	1.000	+/-	4.903
Zr	1.000	+/-	19.772
Y	1.000	+/-	4.334
Sr	230.363	+/-	5.799
Rb	18.760	+/-	9.681
Th	1.000	+/-	291.288
Bi	1.000	+/-	250.515
Au	2891.668	+/-	55.616
As	1093.921	+/-	49.325
Se	1.000	+/-	8.162
Pb	3965.279	+/-	54.279
Hg	200.566	+/-	11.019
Zn	1436.447	+/-	36.476
Cu	14126.941	+/-	164.459
Ni	1.000	+/-	23.569
Co	1.000	+/-	25.107
Fe	1488.535	+/-	67.895
Mn	1.000	+/-	51.197
Cr	44.760	+/-	13.906
V	19.037	+/-	14.241
Ti	1.000	+/-	114.121
Ca	51210.758	+/-	469.992
K	615.292	+/-	86.089
Al	659.827	+/-	403.916
P	8623.448	+/-	153.337
Si	3183.341	+/-	255.463
Cl	1520.276	+/-	30.879
S	5082.940	+/-	71.087
Mg	1.000	+/-	4152.979

Supervised By: \_\_\_\_\_

## Certificate of Verification

XL3t-69288

Reading No 4  
Mode Mining  
Time 2016-09-01 11:24  
Duration 121.80  
Units ppm  
Sigma Value 2  
Sequence Final  
Flags  
INV NR KG1  
OBJEKT TAFELGEMAELEN  
MATERIAL HOLZ METALL FASSUNG  
ANALYSESTELLE P4 RS MASSWERK  
MESSAUFBAU STATIV  
FILTER m30lo30hi30li30  
User Login Raquet



	ppm	+/-	Error
Ce	-339.000	+/-	75.567
La	1.000	+/-	34.828
Ba	1.000	+/-	37.436
Sb	1.000	+/-	19.157
Sn	24.577	+/-	8.895
Cd	9.524	+/-	5.311
Ag	407.961	+/-	11.158
Bal	881014.688	+/-	621.239
Nb	1.000	+/-	2.094
Zr	1.000	+/-	8.292
Y	1.000	+/-	1.629
Sr	242.283	+/-	5.028
Rb	1.000	+/-	3.554
Th	1.000	+/-	125.359
Bi	1.000	+/-	96.493
Au	1.000	+/-	5.103
As	212.030	+/-	19.993
Se	1.000	+/-	2.564
Pb	758.682	+/-	17.337
Hg	10.958	+/-	3.318
Zn	30.134	+/-	12.453
Cu	10372.147	+/-	109.758
Ni	1.000	+/-	20.822
Co	1.000	+/-	18.053
Fe	799.525	+/-	51.064
Mn	1.000	+/-	51.756
Cr	533.502	+/-	19.310
V	1.000	+/-	27.335
Ti	1.000	+/-	199.754
Ca	92815.820	+/-	608.844
K	968.173	+/-	126.859
Al	1326.541	+/-	533.228
P	1.000	+/-	64.218
Si	6004.624	+/-	320.805
Cl	1757.977	+/-	36.065
S	2710.883	+/-	52.774
Mg	1.000	+/-	5404.917

Supervised By: \_\_\_\_\_

## Certificate of Verification

XL3t-69288

Reading No 5  
Mode Mining  
Time 2016-09-01 11:32  
Duration 121.84  
Units ppm  
Sigma Value 2  
Sequence Final  
Flags  
INV NR KG1  
OBJEKT TAFELGEMAELEN vs  
MATERIAL HOLZ METALL FASSUNG  
ANALYSESTELLE P5 VS SCHLEIERBRETT  
MESSAUFBAU STATIV  
FILTER m30lo30hi30li30  
User Login Raquet



	ppm	+/-	Error
Ce	-339.000	+/-	82.654
La	1.000	+/-	37.980
Ba	1.000	+/-	40.881
Sb	1.000	+/-	14.598
Sn	12.317	+/-	8.039
Cd	17.492	+/-	6.152
Ag	15.498	+/-	4.381
Bal	784419.875	+/-	1103.719
Nb	1.000	+/-	5.031
Zr	1.000	+/-	11.495
Y	12.008	+/-	3.269
Sr	221.124	+/-	5.291
Rb	24.330	+/-	6.855
Th	1.000	+/-	170.476
Bi	1.000	+/-	142.187
Au	4488.495	+/-	66.043
As	1.000	+/-	20.162
Se	1.000	+/-	7.842
Pb	1012.808	+/-	21.888
Hg	107.418	+/-	7.716
Zn	412.911	+/-	21.688
Cu	2066.048	+/-	45.916
Ni	1.000	+/-	23.512
Co	1.000	+/-	20.851
Fe	646.213	+/-	51.816
Mn	1.000	+/-	51.367
Cr	73.804	+/-	20.168
V	1.000	+/-	19.782
Ti	120.579	+/-	83.487
Ca	149277.906	+/-	963.164
K	1751.872	+/-	142.125
Al	2705.097	+/-	936.549
P	30190.336	+/-	376.620
Si	11423.496	+/-	622.757
Cl	1844.698	+/-	47.173
S	9155.738	+/-	122.207
Mg	1.000	+/-	9515.288

Supervised By: \_\_\_\_\_

## Certificate of Verification

XL3t-69288

Reading No 6  
Mode Mining  
Time 2016-09-01 11:38  
Duration 121.41  
Units ppm  
Sigma Value 2  
Sequence Final  
Flags  
INV NR KG1  
OBJEKT TAFELGEMAELEN vs  
MATERIAL HOLZ METALL FASSUNG  
ANALYSESTELLE P6 VS GIEBEL  
MESSAUFBAU STATIV  
FILTER m30lo30hi30li30  
User Login Raquet



	ppm	+/-	Error
Ce	-339.000	+/-	93.685
La	1.000	+/-	43.148
Ba	1.000	+/-	46.300
Sb	1.000	+/-	15.634
Sn	1.000	+/-	11.523
Cd	1.000	+/-	6.834
Ag	10.029	+/-	4.369
Bal	809296.563	+/-	1014.551
Nb	1.000	+/-	2.423
Zr	1.000	+/-	9.420
Y	1.000	+/-	1.655
Sr	356.402	+/-	7.035
Rb	39.295	+/-	8.165
Th	1.000	+/-	142.169
Bi	1.000	+/-	108.893
Au	10369.911	+/-	112.518
As	1.000	+/-	15.764
Se	1.000	+/-	11.072
Pb	82.252	+/-	7.860
Hg	10.167	+/-	8.741
Zn	291.003	+/-	23.527
Cu	903.109	+/-	31.046
Ni	1.000	+/-	25.303
Co	1.000	+/-	20.496
Fe	391.513	+/-	47.039
Mn	1.000	+/-	60.885
Cr	137.425	+/-	17.054
V	1.000	+/-	20.825
Ti	1.000	+/-	89.674
Ca	119267.695	+/-	793.679
K	538.468	+/-	107.618
Al	1.000	+/-	1282.596
P	45676.707	+/-	461.112
Si	1.000	+/-	476.405
Cl	1297.923	+/-	42.884
S	11331.499	+/-	135.826
Mg	1.000	+/-	9262.243

Supervised By: \_\_\_\_\_

## Certificate of Verification

XL3t-69288

Reading No 7  
Mode Mining  
Time 2016-09-01 11:43  
Duration 122.22  
Units ppm  
Sigma Value 2  
Sequence Final  
Flags  
INV NR KG1  
OBJEKT TAFELGEMAELEN vs  
MATERIAL HOLZ METALL FASSUNG  
ANALYSESTELLE P7 AS GOLDGRUND  
MESSAUFBAU STATIV  
FILTER m30lo30hi30li30  
User Login Raquet



	ppm	+/-	Error
Ce	-339.000	+/-	88.614
La	1.000	+/-	40.695
Ba	1.000	+/-	43.516
Sb	1.000	+/-	24.268
Sn	1.000	+/-	11.196
Cd	1.000	+/-	9.127
Ag	1.000	+/-	5.064
Bal	727922.125	+/-	1272.162
Nb	1.000	+/-	1.800
Zr	1.000	+/-	6.930
Y	1.000	+/-	1.174
Sr	607.355	+/-	8.771
Rb	23.695	+/-	5.239
Th	1.000	+/-	115.506
Bi	1.000	+/-	77.088
Au	4261.000	+/-	60.715
As	13.019	+/-	7.641
Se	1.000	+/-	6.761
Pb	57.426	+/-	6.086
Hg	5.691	+/-	5.508
Zn	115.531	+/-	15.006
Cu	114.498	+/-	15.002
Ni	1.000	+/-	23.530
Co	1.000	+/-	19.894
Fe	469.395	+/-	46.560
Mn	1.000	+/-	58.503
Cr	109.229	+/-	20.710
V	1.000	+/-	15.746
Ti	1.000	+/-	110.206
Ca	200317.078	+/-	1109.496
K	648.020	+/-	131.463
Al	2446.418	+/-	1097.505
P	48688.488	+/-	486.915
Si	1649.248	+/-	570.469
Cl	686.127	+/-	37.159
S	11865.603	+/-	143.920
Mg	1.000	+/-	11364.776

Supervised By: \_\_\_\_\_

## Certificate of Verification

XL3t-69288

Reading No 8  
Mode Mining  
Time 2016-09-01 11:48  
Duration 122.00  
Units ppm  
Sigma Value 2  
Sequence Final  
Flags  
INV NR KG1  
OBJEKT TAFELGEMAELEN vs  
MATERIAL HOLZ METALL FASSUNG  
ANALYSESTELLE P8 VS SOCKEL RUNDSTAB  
MESSAUFBAU STATIV  
FILTER m30lo30hi30li30  
User Login Raquet



	ppm	+/-	Error
Ce	-339.000	+/-	59.932
La	1.000	+/-	27.422
Ba	1.000	+/-	29.979
Sb	1.000	+/-	12.669
Sn	7.518	+/-	6.099
Cd	13.994	+/-	4.328
Ag	129.768	+/-	5.622
Bal	862250.313	+/-	651.995
Nb	1.000	+/-	1.414
Zr	1.000	+/-	4.853
Y	1.000	+/-	1.000
Sr	126.342	+/-	3.358
Rb	11.133	+/-	3.574
Th	1.000	+/-	79.257
Bi	1.000	+/-	57.857
Au	2203.566	+/-	37.610
As	14.896	+/-	6.540
Se	1.000	+/-	4.309
Pb	60.189	+/-	5.304
Hg	8.939	+/-	3.871
Zn	384.342	+/-	17.079
Cu	3033.523	+/-	48.088
Ni	1.000	+/-	18.823
Co	1.000	+/-	15.013
Fe	362.587	+/-	39.207
Mn	1.000	+/-	52.564
Cr	120.624	+/-	15.718
V	1.000	+/-	39.260
Ti	202.022	+/-	172.960
Ca	107762.414	+/-	617.217
K	1078.337	+/-	107.058
Al	676.140	+/-	541.459
P	10380.321	+/-	188.183
Si	5655.796	+/-	372.828
Cl	1507.793	+/-	34.297
S	4009.543	+/-	66.372
Mg	1.000	+/-	9153.144

Supervised By: \_\_\_\_\_



## Certificate of Verification

XL3t-69288

Reading No 9  
Mode Mining  
Time 2016-09-01 11:53  
Duration 121.19  
Units ppm  
Sigma Value 2  
Sequence Final  
Flags  
INV NR KG1  
OBJEKT TAFELGEMAELEN vs  
MATERIAL HOLZ METALL FASSUNG  
ANALYSESTELLE P9 VS SOCKEL HOHLKEHLE  
MESSAUFBAU STATIV 5mm ABSTAND  
FILTER m30lo30hi30li30  
User Login Raquet



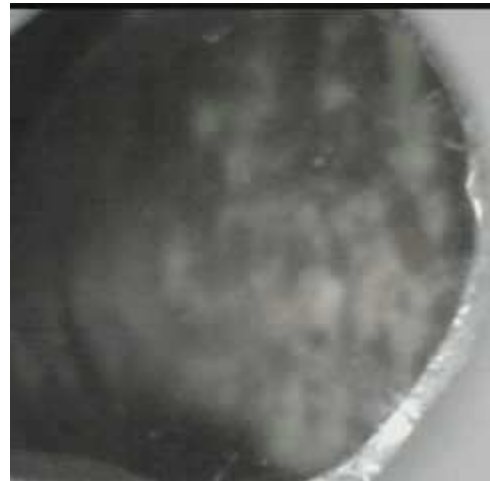
	ppm	+/-	Error
Ce	-339.000	+/-	73.162
La	1.000	+/-	33.602
Ba	1.000	+/-	36.434
Sb	1.000	+/-	12.758
Sn	8.535	+/-	7.215
Cd	10.984	+/-	5.322
Ag	36.194	+/-	4.555
Bal	904474.125	+/-	494.321
Nb	2.153	+/-	1.859
Zr	1.000	+/-	3.840
Y	1.000	+/-	1.000
Sr	51.085	+/-	2.249
Rb	1.000	+/-	1.690
Th	1.000	+/-	50.555
Bi	1.000	+/-	39.188
Au	1.000	+/-	2.926
As	8.687	+/-	4.270
Se	1.000	+/-	1.093
Pb	12.816	+/-	3.376
Hg	1.000	+/-	1.000
Zn	28.482	+/-	7.039
Cu	603.945	+/-	23.357
Ni	1.000	+/-	20.431
Co	1.000	+/-	13.927
Fe	1.000	+/-	33.673
Mn	1.000	+/-	44.895
Cr	13.557	+/-	9.633
V	1.000	+/-	9.537
Ti	1.000	+/-	63.170
Ca	91948.922	+/-	557.351
K	349.675	+/-	83.860
Al	1.000	+/-	433.946
P	1.000	+/-	55.067
Si	1618.140	+/-	220.632
Cl	386.468	+/-	23.613
S	446.330	+/-	27.297
Mg	1.000	+/-	4924.768

Supervised By: \_\_\_\_\_

## Certificate of Verification

XL3t-69288

Reading No 10  
Mode Mining  
Time 2016-09-01 11:57  
Duration 120.17  
Units ppm  
Sigma Value 2  
Sequence Final  
Flags  
INV NR KG1  
OBJEKT TAFELGEMAELEN vs  
MATERIAL HOLZ METALL FASSUNG  
ANALYSESTELLE P10 VS SOCKEL HOHLKEHLE  
MESSAUFBAU STATIV 5mm ABSTAND  
FILTER m30lo30hi30li30  
User Login Raquet



	ppm	+/-	Error
Ce	-339.000	+/-	56.869
La	1.000	+/-	26.120
Ba	1.000	+/-	28.167
Sb	1.000	+/-	11.695
Sn	1.000	+/-	8.228
Cd	11.399	+/-	4.166
Ag	356.920	+/-	8.631
Bal	899553.125	+/-	474.532
Nb	3.682	+/-	1.799
Zr	1.000	+/-	4.097
Y	1.000	+/-	1.077
Sr	45.896	+/-	2.005
Rb	1.000	+/-	1.353
Th	1.000	+/-	53.172
Bi	1.000	+/-	44.347
Au	1.000	+/-	3.310
As	20.044	+/-	5.648
Se	1.000	+/-	1.073
Pb	52.076	+/-	4.576
Hg	1.000	+/-	1.029
Zn	65.845	+/-	9.445
Cu	4425.723	+/-	56.618
Ni	1.000	+/-	17.170
Co	1.000	+/-	13.730
Fe	193.886	+/-	32.606
Mn	1.000	+/-	39.439
Cr	1.000	+/-	10.005
V	1.000	+/-	9.166
Ti	1.000	+/-	81.021
Ca	87389.320	+/-	499.534
K	861.225	+/-	107.317
Al	1.000	+/-	687.089
P	1.000	+/-	57.675
Si	4317.508	+/-	283.669
Cl	1528.332	+/-	32.924
S	1175.059	+/-	36.522
Mg	1.000	+/-	4764.944

Supervised By: \_\_\_\_\_

## Certificate of Verification

XL3t-69288

Reading No 11  
Mode Mining  
Time 2016-09-01 12:04  
Duration 120.84  
Units ppm  
Sigma Value 2  
Sequence Final  
Flags  
INV NR KG1  
OBJEKT TAFELGEMAELEN vs  
MATERIAL HOLZ METALL FASSUNG  
ANALYSESTELLE P11 VS SOCKEL RUNDSTAB  
MESSAUFBAU STATIV 5mm ABSTAND  
FILTER m30lo30hi30li30  
User Login Raquet



	ppm	+/-	Error
Ce	-339.000	+/-	69.267
La	1.000	+/-	31.805
Ba	1.000	+/-	34.211
Sb	1.000	+/-	15.264
Sn	8.019	+/-	6.567
Cd	12.709	+/-	4.892
Ag	29.193	+/-	3.948
Bal	843244.188	+/-	753.999
Nb	1.000	+/-	1.628
Zr	1.000	+/-	5.813
Y	1.000	+/-	1.000
Sr	150.962	+/-	3.836
Rb	16.430	+/-	4.510
Th	1.000	+/-	95.124
Bi	1.000	+/-	68.643
Au	3625.432	+/-	51.463
As	14.821	+/-	7.405
Se	1.000	+/-	5.748
Pb	72.209	+/-	5.986
Hg	1.000	+/-	6.209
Zn	171.383	+/-	14.703
Cu	720.093	+/-	24.920
Ni	1.000	+/-	20.617
Co	1.000	+/-	17.604
Fe	570.510	+/-	45.507
Mn	1.000	+/-	50.666
Cr	57.192	+/-	15.199
V	1.000	+/-	17.901
Ti	1.000	+/-	140.941
Ca	126533.453	+/-	729.838
K	1231.966	+/-	111.491
Al	1496.778	+/-	641.307
P	11966.857	+/-	213.849
Si	4868.128	+/-	391.783
Cl	1257.601	+/-	34.125
S	3952.032	+/-	70.194
Mg	1.000	+/-	6494.656

Supervised By: \_\_\_\_\_

## Certificate of Verification

XL3t-69288

Reading No 12  
Mode Mining  
Time 2016-09-01 12:09  
Duration 120.26  
Units ppm  
Sigma Value 2  
Sequence Final  
Flags  
INV NR KG1  
OBJEKT TAFELGEMAELEN vs  
MATERIAL HOLZ METALL FASSUNG  
ANALYSESTELLE P12 IS SCHWARZZEICHNUNG  
MESSAUFBAU STATIV  
FILTER m30lo30hi30li30  
User Login Raquet



	ppm	+/-	Error
Ce	-339.000	+/-	121.196
La	1.000	+/-	73.624
Ba	1.000	+/-	59.229
Sb	1.000	+/-	19.745
Sn	1.000	+/-	15.702
Cd	1.000	+/-	6.938
Ag	16.552	+/-	5.684
Bal	769592.750	+/-	1317.660
Nb	1.000	+/-	3.506
Zr	1.000	+/-	13.745
Y	1.000	+/-	2.713
Sr	860.074	+/-	13.376
Rb	50.980	+/-	9.522
Th	1.000	+/-	253.735
Bi	1.000	+/-	154.138
Au	9017.311	+/-	117.466
As	175.723	+/-	22.800
Se	1.000	+/-	11.804
Pb	659.137	+/-	20.100
Hg	46.767	+/-	10.124
Zn	251.706	+/-	24.613
Cu	859.188	+/-	34.216
Ni	1.000	+/-	31.443
Co	1.000	+/-	37.645
Fe	3906.624	+/-	118.975
Mn	151.834	+/-	78.683
Cr	169.310	+/-	28.703
V	1.000	+/-	36.226
Ti	163.184	+/-	121.362
Ca	160421.453	+/-	1160.676
K	1523.213	+/-	158.878
Al	2861.795	+/-	1080.185
P	25645.738	+/-	375.622
Si	9365.375	+/-	625.580
Cl	3996.571	+/-	71.343
S	10264.800	+/-	141.738
Mg	1.000	+/-	10722.155

Supervised By: \_\_\_\_\_

## Certificate of Verification

XL3t-69288

Reading No 13  
Mode Mining  
Time 2016-09-01 12:14  
Duration 121.63  
Units ppm  
Sigma Value 2  
Sequence Final  
Flags  
INV NR KG1  
OBJEKT TAFELGEMAELEN vs  
MATERIAL HOLZ METALL FASSUNG  
ANALYSESTELLE P13 IS HUEGEL  
MESSAUFBAU STATIV  
FILTER m30lo30hi30li30  
User Login Raquet



	ppm	+/-	Error
Ce	-339.000	+/-	72.975
La	1.000	+/-	33.385
Ba	1.000	+/-	36.122
Sb	1.000	+/-	12.706
Sn	11.449	+/-	7.280
Cd	8.750	+/-	5.141
Ag	72.655	+/-	5.467
Bal	825062.125	+/-	819.206
Nb	1.000	+/-	1.906
Zr	1.000	+/-	5.897
Y	1.000	+/-	1.200
Sr	164.840	+/-	3.803
Rb	3.372	+/-	2.825
Th	1.000	+/-	93.224
Bi	1.000	+/-	69.052
Au	17.070	+/-	6.481
As	124.263	+/-	13.651
Se	1.000	+/-	1.898
Pb	392.384	+/-	11.447
Hg	36.033	+/-	3.499
Zn	118.550	+/-	11.037
Cu	3867.361	+/-	55.604
Ni	1.000	+/-	19.727
Co	1.000	+/-	17.291
Fe	682.458	+/-	46.081
Mn	1.000	+/-	47.580
Cr	26.216	+/-	15.266
V	1.000	+/-	20.332
Ti	124.049	+/-	99.568
Ca	139470.313	+/-	764.525
K	1309.215	+/-	119.545
Al	1.000	+/-	839.445
P	1.000	+/-	85.908
Si	7417.579	+/-	418.340
Cl	1413.285	+/-	38.066
S	3043.868	+/-	64.922
Mg	16634.186	+/-	8025.389

Supervised By: \_\_\_\_\_

## Certificate of Verification

XL3t-69288

Reading No 14  
Mode Mining  
Time 2016-09-01 12:18  
Duration 121.00  
Units ppm  
Sigma Value 2  
Sequence Final  
Flags  
INV NR KG1  
OBJEKT TAFELGEMAELEN vs  
MATERIAL HOLZ METALL FASSUNG  
ANALYSESTELLE P14 IS HUEGEL  
MESSAUFBAU STATIV  
FILTER m30lo30hi30li30  
User Login Raquet



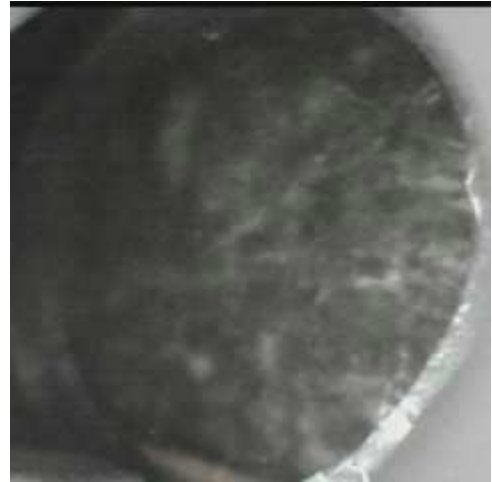
	ppm	+/-	Error
Ce	-339.000	+/-	65.189
La	1.000	+/-	29.882
Ba	43.171	+/-	34.000
Sb	1.000	+/-	12.713
Sn	11.247	+/-	6.252
Cd	18.290	+/-	4.806
Ag	10.305	+/-	3.221
Bal	829670.125	+/-	792.583
Nb	1.000	+/-	4.587
Zr	1.000	+/-	12.517
Y	1.000	+/-	2.586
Sr	209.430	+/-	4.592
Rb	7.845	+/-	5.675
Th	1.000	+/-	207.834
Bi	1.000	+/-	144.915
Au	13.881	+/-	10.748
As	554.982	+/-	31.645
Se	1.000	+/-	3.836
Pb	2200.342	+/-	30.670
Hg	233.770	+/-	8.341
Zn	225.398	+/-	13.855
Cu	3949.134	+/-	59.551
Ni	1.000	+/-	19.693
Co	1.000	+/-	22.956
Fe	1987.033	+/-	70.115
Mn	144.388	+/-	61.789
Cr	137.903	+/-	20.118
V	1.000	+/-	68.345
Ti	309.209	+/-	239.872
Ca	141230.891	+/-	879.903
K	1267.136	+/-	121.235
Al	1323.598	+/-	685.340
P	145.104	+/-	97.542
Si	9084.147	+/-	443.790
Cl	1415.237	+/-	36.948
S	5807.516	+/-	89.180
Mg	1.000	+/-	6324.025

Supervised By: \_\_\_\_\_

## Certificate of Verification

XL3t-69288

Reading No 15  
Mode Mining  
Time 2016-09-01 12:24  
Duration 120.75  
Units ppm  
Sigma Value 2  
Sequence Final  
Flags  
INV NR KG1  
OBJEKT TAFELGEMAELEN  
MATERIAL HOLZ METALL FASSUNG  
ANALYSESTELLE P15 IS KREUZ  
MESSAUFBAU STATIV  
FILTER m30lo30hi30li30  
User Login Raquet



	ppm	+/-	Error
Ce	-339.000	+/-	72.545
La	1.000	+/-	33.140
Ba	1.000	+/-	35.774
Sb	1.000	+/-	14.074
Sn	1.000	+/-	7.944
Cd	8.497	+/-	4.999
Ag	631.069	+/-	13.346
Bal	813347.938	+/-	888.030
Nb	1.000	+/-	1.545
Zr	1.000	+/-	5.432
Y	1.000	+/-	1.026
Sr	282.403	+/-	5.319
Rb	12.531	+/-	2.922
Th	1.000	+/-	80.457
Bi	1.000	+/-	64.001
Au	213.370	+/-	12.868
As	35.909	+/-	9.173
Se	1.000	+/-	2.083
Pb	144.946	+/-	7.685
Hg	9.986	+/-	2.591
Zn	18.260	+/-	11.463
Cu	8541.193	+/-	93.264
Ni	1.000	+/-	21.243
Co	1.000	+/-	18.386
Fe	538.412	+/-	44.888
Mn	1.000	+/-	51.178
Cr	1.000	+/-	19.218
V	1.000	+/-	14.168
Ti	214.360	+/-	73.129
Ca	156455.234	+/-	858.042
K	1420.041	+/-	167.921
Al	1482.755	+/-	797.852
P	1.000	+/-	92.743
Si	9837.081	+/-	484.979
Cl	3021.516	+/-	54.234
S	3784.515	+/-	74.732
Mg	1.000	+/-	7151.309

Supervised By: \_\_\_\_\_

## Certificate of Verification

XL3t-69288

Reading No 16  
Mode Mining  
Time 2016-09-01 12:27  
Duration 121.98  
Units ppm  
Sigma Value 2  
Sequence Final  
Flags 3mm  
INV NR KG1  
OBJEKT TAFELGEMAELEN  
MATERIAL HOLZ METALL FASSUNG  
ANALYSESTELLE P15 IS KREUZ  
MESSAUFBAU STATIV  
FILTER m30lo30hi30li30  
User Login Raquet



	ppm	+/-	Error
Ce	1.000	+/-	102.987
La	1.000	+/-	84.376
Ba	1.000	+/-	88.535
Sb	1.000	+/-	30.801
Sn	1.000	+/-	23.930
Cd	1.000	+/-	11.924
Ag	456.307	+/-	25.603
Bal	800245.125	+/-	1688.918
Nb	1.000	+/-	3.270
Zr	1.000	+/-	9.668
Y	1.000	+/-	2.213
Sr	286.135	+/-	9.804
Rb	11.183	+/-	5.078
Th	1.000	+/-	131.279
Bi	1.000	+/-	113.012
Au	192.582	+/-	22.930
As	42.832	+/-	15.478
Se	1.000	+/-	3.682
Pb	163.900	+/-	14.894
Hg	7.245	+/-	4.663
Zn	1.000	+/-	34.313
Cu	9578.484	+/-	183.079
Ni	1.000	+/-	34.217
Co	1.000	+/-	34.705
Fe	596.487	+/-	84.081
Mn	1.000	+/-	91.930
Cr	1.000	+/-	23.371
V	1.000	+/-	19.821
Ti	203.381	+/-	99.331
Ca	166728.531	+/-	1538.959
K	1407.072	+/-	219.115
Al	1612.670	+/-	782.457
P	1.000	+/-	92.503
Si	10645.158	+/-	526.729
Cl	4209.969	+/-	84.483
S	3612.915	+/-	78.360
Mg	1.000	+/-	7790.547

Supervised By: \_\_\_\_\_



## Certificate of Verification

XL3t-69288

Reading No 20  
Mode General Metals  
Time 2016-09-01 12:39  
Duration 31.13  
Units %  
Sigma Value 2  
Sequence Final  
Alloy1 No Match : \*6.99  
Alloy2 No Match : \*6.99  
Flags No Al  
INV NR KG1  
OBJEKT TAFELGEMAELEN  
MATERIAL METALL  
ANALYSESTELLE P17 SCHARNIERBBAND  
MESSAUFBAU STATIV  
FILTER m30  
User Login Raquet



	%	+/-	Error
Sb	0.000	+/-	0.014
Sn	*1.547	+/-	0.025
Cd	0.000	+/-	0.012
Ag	0.000	+/-	0.012
Nb	0.000	+/-	0.001
Zr	0.017	+/-	0.003
Bi	0.009	+/-	0.008
Au	0.000	+/-	0.001
As	0.280	+/-	0.259
Se	0.073	+/-	0.010
Pb	*1.284	+/-	0.032
Hg	0.773	+/-	0.074
Zn	12.996	+/-	0.070
Cu	80.268	+/-	0.245
Ni	0.076	+/-	0.010
Co	0.027	+/-	0.007
Fe	1.018	+/-	0.020
Mn	0.009	+/-	0.008
Cr	0.000	+/-	0.010
V	0.000	+/-	0.017
Ti	0.000	+/-	0.046
Al	0.000	+/-	40.000
Pd	0.000	+/-	0.011
Ru	0.000	+/-	0.004
Mo	0.000	+/-	0.002
W	1.622	+/-	0.077

Supervised By: \_\_\_\_\_

## Certificate of Verification

XL3t-69288

Reading No 21  
Mode General Metals  
Time 2016-09-01 12:41  
Duration 30.10  
Units %  
Sigma Value 2  
Sequence Final  
Alloy1 No Match : \*6.12  
Alloy2 No Match : \*6.44  
Flags No Al-3mm  
INV NR KG1  
OBJEKT TAFELGEMAELEN  
MATERIAL METALL  
ANALYSESTELLE P17 SCHARNIERBBAND  
MESSAUFBAU STATIV  
FILTER m30  
User Login Raquet



	%	+/-	Error
Sb	0.000	+/-	0.013
Sn	*1.708	+/-	0.037
Cd	0.000	+/-	0.013
Ag	0.013	+/-	0.013
Nb	0.000	+/-	0.002
Zr	0.000	+/-	0.002
Bi	0.013	+/-	0.012
Au	0.000	+/-	0.001
As	0.000	+/-	0.381
Se	0.000	+/-	0.011
Pb	1.013	+/-	0.044
Hg	0.139	+/-	0.074
Zn	14.008	+/-	0.111
Cu	81.921	+/-	0.359
Ni	0.115	+/-	0.016
Co	0.020	+/-	0.010
Fe	*0.999	+/-	0.030
Mn	0.000	+/-	0.012
Cr	0.000	+/-	0.015
V	0.000	+/-	0.026
Ti	0.050	+/-	0.038
Al	0.000	+/-	40.000
Pd	0.000	+/-	0.012
Ru	0.000	+/-	0.003
Mo	0.000	+/-	0.003
W	0.000	+/-	0.096

Supervised By: \_\_\_\_\_