

## Certificate of Verification

XL3t-69288

Reading No 7  
Mode Mining  
Time 2016-11-09 13:45  
Duration 121.64  
Units ppm  
Sigma Value 2  
Sequence Final  
Flags  
INV NR KG13a  
OBJEKT TUECHLEIN  
MATERIAL HOLZ METALL FASSUNG  
ANALYSESTELLE P1 GOLDGRUND  
MESSAUFBAU STATIV  
FILTER m30lo30hi30li30  
User Login Raquet



	ppm	+/-	Error
Ce	-339.000	+/-	107.340
La	1.000	+/-	49.685
Ba	1.000	+/-	52.995
Sb	1.000	+/-	17.882
Sn	330.565	+/-	15.678
Cd	1.000	+/-	7.612
Ag	10.239	+/-	4.948
Bal	804563.375	+/-	1106.938
Nb	1.000	+/-	3.753
Zr	1.000	+/-	15.054
Y	1.000	+/-	3.321
Sr	436.011	+/-	8.586
Rb	14.226	+/-	7.628
Th	1.000	+/-	221.339
Bi	1.000	+/-	184.238
Au	2164.308	+/-	51.175
As	633.219	+/-	37.629
Se	1.000	+/-	7.168
Pb	2116.794	+/-	35.943
Hg	1465.096	+/-	25.105
Zn	205.750	+/-	19.350
Cu	86.893	+/-	16.453
Ni	1.000	+/-	28.401
Co	1.000	+/-	37.006
Fe	3952.041	+/-	114.601
Mn	1.000	+/-	105.391
Cr	45.639	+/-	20.509
V	1.000	+/-	34.105
Ti	510.253	+/-	117.427
Ca	104971.297	+/-	826.125
K	5976.127	+/-	196.491
Al	3793.687	+/-	910.513
P	22227.807	+/-	330.396
Si	28780.107	+/-	789.490
Cl	781.169	+/-	38.676
S	16935.385	+/-	183.524
Mg	1.000	+/-	8948.697

Supervised By: \_\_\_\_\_

## Certificate of Verification

XL3t-69288

Reading No 8  
Mode Mining  
Time 2016-11-09 13:50  
Duration 122.17  
Units ppm  
Sigma Value 2  
Sequence Final  
Flags  
INV NR KG13a  
OBJEKT TUECHLEIN  
MATERIAL HOLZ METALL FASSUNG  
ANALYSESTELLE P2 GEWAND SCHLIESSE  
MESSAUFBAU STATIV  
FILTER m30lo30hi30li30  
User Login Raquet



	ppm	+/-	Error
Ce	-339.000	+/-	95.660
La	1.000	+/-	44.076
Ba	1.000	+/-	47.206
Sb	1.000	+/-	15.802
Sn	428.614	+/-	15.693
Cd	7.611	+/-	6.469
Ag	19.220	+/-	4.775
Bal	877868.813	+/-	714.938
Nb	1.000	+/-	3.111
Zr	1.000	+/-	12.481
Y	1.000	+/-	2.686
Sr	324.552	+/-	7.336
Rb	23.234	+/-	7.149
Th	1.000	+/-	184.051
Bi	1.000	+/-	157.422
Au	3508.844	+/-	62.893
As	377.218	+/-	28.495
Se	1.000	+/-	7.751
Pb	1260.500	+/-	25.868
Hg	1992.522	+/-	28.923
Zn	229.316	+/-	21.151
Cu	825.446	+/-	30.585
Ni	1.000	+/-	26.892
Co	1.000	+/-	32.466
Fe	2925.071	+/-	95.991
Mn	1.000	+/-	108.218
Cr	21.361	+/-	19.473
V	1.000	+/-	27.347
Ti	300.902	+/-	94.895
Ca	67002.203	+/-	555.039
K	4745.619	+/-	166.339
Al	2672.455	+/-	705.903
P	3556.555	+/-	153.508
Si	17009.342	+/-	576.704
Cl	1813.067	+/-	43.702
S	13087.595	+/-	149.893
Mg	1.000	+/-	11518.966

Supervised By: \_\_\_\_\_

### Certificate of Verification

XL3t-69288

Reading No 9  
Mode Mining  
Time 2016-11-09 13:54  
Duration 121.84  
Units ppm  
Sigma Value 2  
Sequence Final  
Flags  
INV NR KG13a  
OBJEKT TUECHLEIN  
MATERIAL HOLZ METALL FASSUNG  
ANALYSESTELLE P3 GEWAND SCHLIESSE  
MESSAUFBAU STATIV  
FILTER m30lo30hi30li30  
User Login Raquet



	ppm	+/-	Error
Ce	-339.000	+/-	83.010
La	1.000	+/-	38.113
Ba	1.000	+/-	41.126
Sb	1.000	+/-	15.255
Sn	313.440	+/-	12.696
Cd	6.180	+/-	5.655
Ag	8.693	+/-	3.896
Bal	796619.313	+/-	978.510
Nb	1.000	+/-	3.070
Zr	1.000	+/-	12.695
Y	1.000	+/-	2.704
Sr	347.027	+/-	6.270
Rb	1.000	+/-	7.619
Th	1.000	+/-	189.155
Bi	1.000	+/-	186.595
Au	715.584	+/-	24.404
As	654.295	+/-	33.503
Se	1.000	+/-	4.699
Pb	2141.531	+/-	31.717
Hg	70.219	+/-	6.497
Zn	2264.426	+/-	40.176
Cu	143.068	+/-	15.223
Ni	1.000	+/-	22.613
Co	1.000	+/-	19.186
Fe	791.514	+/-	53.055
Mn	1.000	+/-	68.224
Cr	71.293	+/-	19.886
V	1.000	+/-	36.269
Ti	1.000	+/-	227.161
Ca	159805.531	+/-	1004.833
K	1482.379	+/-	131.934
Al	802.924	+/-	801.300
P	12453.388	+/-	249.438
Si	7334.692	+/-	487.740
Cl	600.457	+/-	31.650
S	13373.941	+/-	149.110
Mg	1.000	+/-	8553.404

Supervised By: \_\_\_\_\_

## Certificate of Verification

XL3t-69288

Reading No 10  
Mode Mining  
Time 2016-11-09 13:58  
Duration 120.67  
Units ppm  
Sigma Value 2  
Sequence Final  
Flags  
INV NR KG13a  
OBJEKT TUECHLEIN  
MATERIAL HOLZ METALL FASSUNG  
ANALYSESTELLE P4 KRONE  
MESSAUFBAU STATIV  
FILTER m30lo30hi30li30  
User Login Raquet



	ppm	+/-	Error
Ce	-339.000	+/-	104.810
La	1.000	+/-	47.954
Ba	1.000	+/-	51.423
Sb	1.000	+/-	17.845
Sn	419.288	+/-	18.634
Cd	10.842	+/-	6.987
Ag	846.811	+/-	19.793
Bal	866684.188	+/-	868.559
Nb	16.589	+/-	10.546
Zr	1.000	+/-	37.539
Y	1.000	+/-	8.931
Sr	283.726	+/-	7.583
Rb	1.000	+/-	21.631
Th	1.000	+/-	543.726
Bi	1.000	+/-	525.327
Au	1284.404	+/-	43.525
As	3801.940	+/-	106.150
Se	1.000	+/-	11.909
Pb	13456.235	+/-	182.238
Hg	1.000	+/-	11.502
Zn	213.339	+/-	16.705
Cu	874.907	+/-	34.983
Ni	1.000	+/-	28.685
Co	1.000	+/-	43.893
Fe	5746.207	+/-	153.713
Mn	1.000	+/-	64.770
Cr	78.217	+/-	18.922
V	25.214	+/-	17.073
Ti	178.874	+/-	92.451
Ca	42673.188	+/-	565.398
K	1780.548	+/-	177.510
Al	2920.508	+/-	657.961
P	16798.197	+/-	305.478
Si	18511.557	+/-	594.070
Cl	1627.586	+/-	42.454
S	21767.654	+/-	300.300
Mg	1.000	+/-	6212.376

Supervised By: \_\_\_\_\_

## Certificate of Verification

XL3t-69288

Reading No 11  
Mode Mining  
Time 2016-11-09 14:03  
Duration 120.66  
Units ppm  
Sigma Value 2  
Sequence Final  
Flags  
INV NR KG13a  
OBJEKT TUECHLEIN  
MATERIAL HOLZ METALL FASSUNG  
ANALYSESTELLE P5 NIMBUS ADLER  
MESSAUFBAU STATIV  
FILTER m30lo30hi30li30  
User Login Raquet



	ppm	+/-	Error
Ce	-339.000	+/-	86.304
La	1.000	+/-	39.668
Ba	1.000	+/-	42.468
Sb	70.660	+/-	15.846
Sn	773.147	+/-	18.406
Cd	14.302	+/-	5.955
Ag	17.612	+/-	4.199
Bal	856278.750	+/-	871.102
Nb	12.290	+/-	8.248
Zr	1.000	+/-	34.354
Y	1.000	+/-	6.864
Sr	199.973	+/-	6.208
Rb	1.000	+/-	16.590
Th	1.000	+/-	433.049
Bi	1.000	+/-	501.093
Au	1793.610	+/-	49.309
As	2362.149	+/-	80.157
Se	1.000	+/-	11.410
Pb	9353.865	+/-	123.866
Hg	795.564	+/-	20.775
Zn	121.582	+/-	15.754
Cu	75.088	+/-	15.151
Ni	1.000	+/-	26.415
Co	1.000	+/-	31.418
Fe	2293.074	+/-	92.102
Mn	1.000	+/-	62.260
Cr	36.400	+/-	16.193
V	1.000	+/-	15.281
Ti	184.804	+/-	84.430
Ca	54985.379	+/-	660.318
K	3256.640	+/-	153.621
Al	4605.023	+/-	665.174
P	16695.518	+/-	288.131
Si	22149.244	+/-	613.015
Cl	1473.771	+/-	36.600
S	22451.475	+/-	287.255
Mg	1.000	+/-	8319.819

Supervised By: \_\_\_\_\_

## Certificate of Verification

XL3t-69288

Reading No 12  
Mode Mining  
Time 2016-11-09 14:07  
Duration 122.15  
Units ppm  
Sigma Value 2  
Sequence Final  
Flags  
INV NR KG13a  
OBJEKT TUECHLEIN  
MATERIAL HOLZ METALL FASSUNG  
ANALYSESTELLE P6 BUCHSCHLIESSE  
MESSAUFBAU STATIV  
FILTER m30lo30hi30li30  
User Login Raquet



	ppm	+/-	Error
Ce	-339.000	+/-	101.653
La	1.000	+/-	46.499
Ba	1.000	+/-	50.133
Sb	27.728	+/-	17.698
Sn	452.798	+/-	17.405
Cd	26.055	+/-	7.066
Ag	612.540	+/-	15.540
Bal	905063.313	+/-	653.704
Nb	12.918	+/-	9.850
Zr	1.000	+/-	42.259
Y	1.000	+/-	8.450
Sr	261.872	+/-	7.409
Rb	1.000	+/-	24.677
Th	1.000	+/-	509.631
Bi	1.000	+/-	592.069
Au	2413.054	+/-	60.491
As	3233.385	+/-	98.798
Se	1.000	+/-	14.989
Pb	11398.134	+/-	160.630
Hg	1.000	+/-	18.321
Zn	3759.397	+/-	75.953
Cu	1054.385	+/-	38.898
Ni	1.000	+/-	29.234
Co	1.000	+/-	51.447
Fe	8302.124	+/-	192.697
Mn	108.519	+/-	75.383
Cr	118.592	+/-	21.314
V	1.000	+/-	44.747
Ti	1.000	+/-	264.272
Ca	18933.871	+/-	303.483
K	1689.971	+/-	137.035
Al	1291.726	+/-	504.572
P	14851.674	+/-	281.514
Si	8466.412	+/-	415.761
Cl	1656.411	+/-	40.519
S	16265.064	+/-	245.247
Mg	1.000	+/-	5190.279

Supervised By: \_\_\_\_\_

## Certificate of Verification

XL3t-69288

Reading No 13  
Mode Mining  
Time 2016-11-09 14:14  
Duration 121.56  
Units ppm  
Sigma Value 2  
Sequence Final  
Flags  
INV NR KG13a  
OBJEKT TUECHLEIN  
MATERIAL HOLZ METALL FASSUNG  
ANALYSESTELLE P7 NIMBUS  
MESSAUFBAU STATIV  
FILTER m30lo30hi30li30  
User Login Raquet



	ppm	+/-	Error
Ce	-339.000	+/-	90.451
La	1.000	+/-	41.529
Ba	1.000	+/-	44.930
Sb	1.000	+/-	18.056
Sn	426.590	+/-	15.379
Cd	7.485	+/-	6.218
Ag	12.130	+/-	4.367
Bal	799152.750	+/-	1114.448
Nb	1.000	+/-	3.816
Zr	1.000	+/-	15.339
Y	1.000	+/-	3.428
Sr	253.161	+/-	6.529
Rb	13.505	+/-	7.741
Th	1.000	+/-	226.811
Bi	1.000	+/-	226.261
Au	2117.432	+/-	49.863
As	580.580	+/-	38.213
Se	1.000	+/-	6.951
Pb	2524.106	+/-	38.749
Hg	1982.998	+/-	29.132
Zn	189.758	+/-	19.771
Cu	3524.604	+/-	63.605
Ni	1.000	+/-	25.634
Co	1.000	+/-	33.524
Fe	3967.549	+/-	108.413
Mn	1.000	+/-	59.593
Cr	76.746	+/-	17.993
V	1.000	+/-	29.690
Ti	972.881	+/-	120.798
Ca	61323.656	+/-	544.936
K	6936.462	+/-	196.792
Al	19439.754	+/-	1133.260
P	17154.922	+/-	260.471
Si	69432.586	+/-	1020.554
Cl	421.760	+/-	27.378
S	9488.543	+/-	117.759
Mg	1.000	+/-	6501.859

Supervised By: \_\_\_\_\_

## Certificate of Verification

XL3t-69288

Reading No 14  
Mode Mining  
Time 2016-11-09 14:18  
Duration 120.50  
Units ppm  
Sigma Value 2  
Sequence Final  
Flags  
INV NR KG13a  
OBJEKT TUECHLEIN  
MATERIAL HOLZ METALL FASSUNG  
ANALYSESTELLE P8 GEWAND  
MESSAUFBAU STATIV  
FILTER m30lo30hi30li30  
User Login Raquet



	ppm	+/-	Error
Ce	-339.000	+/-	92.120
La	1.000	+/-	42.413
Ba	1.000	+/-	45.465
Sb	1.000	+/-	15.354
Sn	831.668	+/-	21.664
Cd	21.477	+/-	6.611
Ag	657.932	+/-	15.895
Bal	895204.313	+/-	669.758
Nb	13.131	+/-	8.514
Zr	1.000	+/-	31.473
Y	1.000	+/-	7.127
Sr	232.787	+/-	6.438
Rb	1.000	+/-	16.179
Th	1.000	+/-	444.807
Bi	1.000	+/-	457.131
Au	799.343	+/-	33.775
As	2626.338	+/-	84.293
Se	14.440	+/-	10.315
Pb	9938.421	+/-	130.532
Hg	157.394	+/-	12.852
Zn	65.034	+/-	12.231
Cu	1261.528	+/-	40.345
Ni	1.000	+/-	27.008
Co	1.000	+/-	51.833
Fe	9917.898	+/-	203.064
Mn	1.000	+/-	61.159
Cr	71.904	+/-	18.384
V	32.536	+/-	16.971
Ti	334.002	+/-	93.915
Ca	23523.131	+/-	335.624
K	3351.108	+/-	198.445
Al	2975.771	+/-	587.645
P	10824.904	+/-	222.533
Si	19715.912	+/-	575.717
Cl	2094.537	+/-	45.994
S	15334.455	+/-	214.144
Mg	1.000	+/-	5091.451

Supervised By: \_\_\_\_\_



## Certificate of Verification

XL3t-69288

Reading No 15  
Mode Mining  
Time 2016-11-09 14:21  
Duration 120.66  
Units ppm  
Sigma Value 2  
Sequence Final  
Flags  
INV NR KG13a  
OBJEKT TUECHLEIN  
MATERIAL HOLZ METALL FASSUNG  
ANALYSESTELLE P9 BUCHSCHLIESSE  
MESSAUFBAU STATIV  
FILTER m30lo30hi30li30  
User Login Raquet



	ppm	+/-	Error
Ce	-339.000	+/-	71.897
La	1.000	+/-	32.937
Ba	1.000	+/-	35.529
Sb	1.000	+/-	12.110
Sn	223.847	+/-	10.764
Cd	12.798	+/-	5.097
Ag	260.793	+/-	8.457
Bal	899306.625	+/-	559.092
Nb	1.000	+/-	4.108
Zr	1.000	+/-	16.636
Y	1.000	+/-	3.596
Sr	189.803	+/-	4.716
Rb	1.000	+/-	7.244
Th	1.000	+/-	247.334
Bi	1.000	+/-	241.056
Au	233.591	+/-	17.273
As	1133.912	+/-	45.037
Se	1.000	+/-	5.490
Pb	3751.786	+/-	48.321
Hg	95.559	+/-	7.782
Zn	25.378	+/-	8.188
Cu	641.943	+/-	25.403
Ni	1.000	+/-	21.946
Co	1.000	+/-	41.999
Fe	8103.174	+/-	151.565
Mn	1.000	+/-	51.916
Cr	52.010	+/-	14.731
V	17.790	+/-	14.191
Ti	425.692	+/-	80.609
Ca	48604.230	+/-	456.985
K	3745.909	+/-	153.971
Al	2165.722	+/-	441.238
P	2687.687	+/-	99.784
Si	19271.658	+/-	470.076
Cl	1111.463	+/-	27.255
S	7938.595	+/-	97.053
Mg	1.000	+/-	3894.008

Supervised By: \_\_\_\_\_

## Certificate of Verification

XL3t-69288

Reading No 16  
Mode Mining  
Time 2016-11-09 14:25  
Duration 121.23  
Units ppm  
Sigma Value 2  
Sequence Final  
Flags  
INV NR KG13a  
OBJEKT TUECHLEIN  
MATERIAL HOLZ METALL FASSUNG  
ANALYSESTELLE P10 AERMEL  
MESSAUFBAU STATIV  
FILTER m30lo30hi30li30  
User Login Raquet



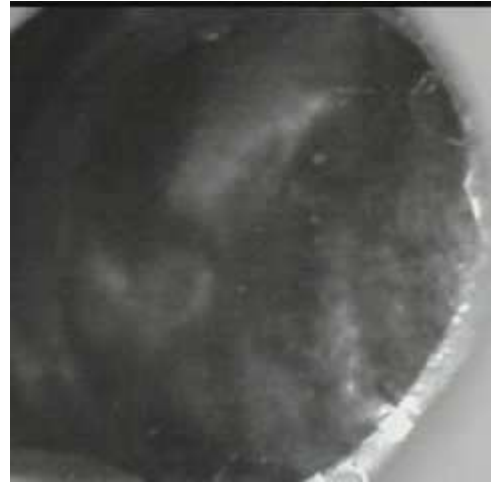
	ppm	+/-	Error
Ce	-339.000	+/-	90.188
La	1.000	+/-	41.311
Ba	1.000	+/-	44.717
Sb	1.000	+/-	18.272
Sn	396.953	+/-	14.749
Cd	13.058	+/-	6.127
Ag	177.796	+/-	8.197
Bal	885653.063	+/-	711.123
Nb	8.193	+/-	8.131
Zr	1.000	+/-	31.550
Y	1.000	+/-	6.854
Sr	323.472	+/-	7.583
Rb	16.957	+/-	13.902
Th	1.000	+/-	426.378
Bi	1.000	+/-	446.476
Au	2106.998	+/-	51.588
As	2722.104	+/-	81.251
Se	1.000	+/-	15.115
Pb	8849.038	+/-	116.843
Hg	1.000	+/-	17.904
Zn	5156.812	+/-	86.250
Cu	1148.432	+/-	37.715
Ni	1.000	+/-	26.862
Co	1.000	+/-	44.269
Fe	6896.656	+/-	157.921
Mn	102.820	+/-	73.310
Cr	102.269	+/-	23.677
V	1.000	+/-	55.146
Ti	235.899	+/-	230.051
Ca	24603.447	+/-	335.196
K	1128.955	+/-	124.617
Al	934.614	+/-	579.753
P	32932.082	+/-	468.809
Si	4965.540	+/-	447.799
Cl	1224.682	+/-	36.769
S	20300.096	+/-	265.384
Mg	1.000	+/-	6405.624

Supervised By: \_\_\_\_\_

## Certificate of Verification

XL3t-69288

Reading No 17  
Mode Mining  
Time 2016-11-09 14:31  
Duration 121.40  
Units ppm  
Sigma Value 2  
Sequence Final  
Flags  
INV NR KG13a  
OBJEKT TUECHLEIN  
MATERIAL HOLZ METALL FASSUNG  
ANALYSESTELLE P11 VORDERSEITE  
MESSAUFBAU STATIV  
FILTER m30lo30hi30li30  
User Login Raquet



	ppm	+/-	Error
Ce	999.812	+/-	446.298
La	581.100	+/-	203.229
Ba	1267.447	+/-	227.590
Sb	1.000	+/-	66.117
Sn	51217.715	+/-	1362.829
Cd	1.000	+/-	44.235
Ag	30.205	+/-	20.440
Bal	240379.672	+/-	11818.539
Nb	23.252	+/-	20.888
Zr	1.000	+/-	102.011
Y	1.000	+/-	17.625
Sr	36.409	+/-	9.008
Rb	1.000	+/-	33.758
Th	1.000	+/-	1087.641
Bi	1.000	+/-	1076.210
Au	1.000	+/-	41.836
As	1652.231	+/-	167.406
Se	1.000	+/-	24.820
Pb	4621.114	+/-	175.913
Hg	1.000	+/-	20.295
Zn	1110.376	+/-	93.082
Cu	2250.962	+/-	160.629
Ni	525.079	+/-	195.281
Co	4075.130	+/-	635.015
Fe	615413.438	+/-	9762.701
Mn	1.000	+/-	195.292
Cr	139.684	+/-	102.105
V	1.000	+/-	89.107
Ti	1.000	+/-	412.374
Ca	8548.586	+/-	814.037
K	3346.711	+/-	686.120
Al	16878.545	+/-	3272.855
P	1.000	+/-	136.899
Si	32191.520	+/-	954.999
Cl	4061.153	+/-	85.378
S	10309.858	+/-	171.046
Mg	1.000	+/-	31662.811

Supervised By: \_\_\_\_\_