

Thermo Fisher Scientific  
900 Middlesex Turnpike  
Billerica, MA 01821

**Certificate of Verification**

XL3t-69288

Reading No 3  
Mode Mining  
Time 2016-08-04 11:43  
Duration 121.17  
Units ppm  
Sigma Value 2  
Sequence Final  
Flags  
INV NR Gm511  
OBJEKT Gemaelde  
MATERIAL HOLZ METALL FASSUNG  
ANALYSESTELLE P1 HELMZIER MINING  
MESSAUFBAU STATIV ANLIEGEND  
FILTER  
User Login Schewe



	ppm	±	Error
Ce	< LOD	:	101.734
La	< LOD	:	46.888
Ba	< LOD	:	50.278
Sb	< LOD	:	20.363
Sn	< LOD	:	11.664
Cd	13.778	±	4.943
Ag	390.380	±	10.384
Bal	819287.563	±	801.921
Nb	< LOD	:	2.280
Zr	< LOD	:	8.684
Y	< LOD	:	1.623
Sr	231.397	±	4.419
Rb	< LOD	:	3.530
Th	< LOD	:	135.166
Bi	< LOD	:	101.189
Au	< LOD	:	6.295
As	118.597	±	13.065
Se	< LOD	:	2.708
Pb	372.391	±	10.938
Hg	8.290	±	2.475
Zn	< LOD	:	7.173
Cu	115.079	±	12.900
Ni	< LOD	:	28.603
Co	< LOD	:	22.201
Fe	284.306	±	36.450
Mn	< LOD	:	65.378
Cr	< LOD	:	24.510
V	< LOD	:	22.976
Ti	< LOD	:	130.846
Ca	163530.953	±	853.948
K	1047.717	±	147.165
Al	1386.083	±	718.581
P	< LOD	:	134.495
Si	6955.548	±	398.525
Cl	995.650	±	34.016
S	5240.251	±	81.405
Mg	< LOD	:	10028.893

Supervised By: \_\_\_\_\_

**Certificate of Verification**

XL3t-69288

Reading No 4  
Mode Mining  
Time 2016-08-04 11:49  
Duration 120.02  
Units ppm  
Sigma Value 2  
Sequence Final  
Flags  
INV NR Gm511  
OBJEKT Gemaelde  
MATERIAL HOLZ METALL FASSUNG  
ANALYSESTELLE P2 RUESTUNG  
MESSAUFBAU STATIV ANLIEGEND  
FILTER  
User Login Schewe



	ppm	±	Error
Ce	< LOD	:	98.029
La	< LOD	:	44.876
Ba	< LOD	:	48.389
Sb	< LOD	:	26.084
Sn	< LOD	:	11.115
Cd	15.067	±	4.796
Ag	574.293	±	12.405
Bal	803970.188	±	880.559
Nb	< LOD	:	2.129
Zr	< LOD	:	7.534
Y	< LOD	:	1.500
Sr	253.717	±	4.730
Rb	< LOD	:	2.941
Th	< LOD	:	112.933
Bi	< LOD	:	86.951
Au	< LOD	:	6.173
As	57.556	±	10.398
Se	< LOD	:	2.402
Pb	225.092	±	8.797
Hg	4.499	±	2.075
Zn	9.931	±	5.723
Cu	102.697	±	12.901
Ni	< LOD	:	29.820
Co	< LOD	:	23.364
Fe	402.271	±	40.296
Mn	< LOD	:	69.841
Cr	28.980	±	17.030
V	< LOD	:	21.591
Ti	< LOD	:	109.533
Ca	173139.859	±	905.462
K	1391.493	±	172.424
Al	2740.491	±	894.084
P	< LOD	:	147.296
Si	11924.917	±	544.785
Cl	1245.338	±	41.185
S	3834.644	±	77.525
Mg	< LOD	:	19461.791

**Certificate of Verification**

XL3t-69288

Reading No 5  
Mode Mining  
Time 2016-08-04 11:56  
Duration 121.21  
Units ppm  
Sigma Value 2  
Sequence Final  
Flags  
INV NR Gm511  
OBJEKT Gemaelde  
MATERIAL HOLZ METALL FASSUNG  
ANALYSESTELLE P3 RUESTUNG SCHWARZZEICHNUNG  
MESSAUFBAU STATIV ANLIEGEND  
FILTER  
User Login Schewe



	ppm	±	Error
Ce	< LOD	:	100.340
La	< LOD	:	45.993
Ba	< LOD	:	49.695
Sb	< LOD	:	17.686
Sn	< LOD	:	11.525
Cd	17.065	±	4.973
Ag	649.347	±	13.413
Bal	813435.875	±	851.035
Nb	< LOD	:	2.158
Zr	< LOD	:	7.849
Y	< LOD	:	1.500
Sr	246.030	±	4.666
Rb	< LOD	:	2.859
Th	< LOD	:	118.107
Bi	< LOD	:	92.794
Au	< LOD	:	6.802
As	76.521	±	11.236
Se	< LOD	:	2.517
Pb	258.760	±	9.412
Hg	5.430	±	2.220
Zn	16.464	±	6.029
Cu	110.777	±	13.090
Ni	< LOD	:	28.735
Co	< LOD	:	24.083
Fe	399.805	±	40.642
Mn	< LOD	:	71.947
Cr	27.871	±	16.428
V	< LOD	:	30.593
Ti	124.697	±	74.111
Ca	160509.297	±	857.606
K	1768.543	±	174.650
Al	2633.825	±	762.962
P	< LOD	:	130.190
Si	14310.634	±	513.529
Cl	1364.339	±	37.309
S	4044.701	±	70.317
Mg	< LOD	:	17966.326

**Certificate of Verification**

XL3t-69288

Reading No 6  
Mode Mining  
Time 2016-08-04 12:01  
Duration 120.50  
Units ppm  
Sigma Value 2  
Sequence Final  
Flags  
INV NR Gm511  
OBJEKT Gemaelde  
MATERIAL HOLZ METALL FASSUNG  
ANALYSESTELLE P4 RAHMUNG  
MESSAUFBAU STATIV ANLIEGEND  
FILTER  
User Login Schewe

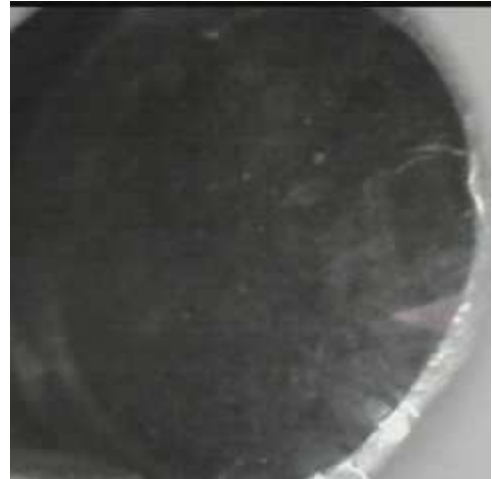


	ppm	±	Error
Ce	909.189	±	300.116
La	485.668	±	134.872
Ba	423.372	±	140.782
Sb	< LOD	:	109.550
Sn	222.091	±	29.934
Cd	< LOD	:	23.714
Ag	36.934	±	12.487
Bal	756486.875	±	3799.875
Nb	132.977	±	86.197
Zr	< LOD	:	371.834
Y	< LOD	:	100.966
Sr	< LOD	:	31.326
Rb	< LOD	:	252.976
Th	< LOD	:	7452.548
Bi	< LOD	:	3636.171
Au	< LOD	:	128.867
As	19356.045	±	637.524
Se	< LOD	:	47.836
Pb	124485.750	±	3053.782
Hg	1687.926	±	80.133
Zn	242.956	±	30.372
Cu	487.720	±	45.560
Ni	156.861	±	61.356
Co	149.090	±	55.087
Fe	1075.297	±	121.540
Mn	298.989	±	118.960
Cr	< LOD	:	54.934
V	< LOD	:	55.883
Ti	< LOD	:	247.476
Ca	21687.758	±	606.588
K	5029.678	±	309.404
Al	5472.567	±	1016.998
P	2557.119	±	177.915
Si	24484.164	±	948.546
Cl	4072.344	±	138.542
S	29718.551	±	883.067
Mg	< LOD	:	19030.951

**Certificate of Verification**

XL3t-69288

Reading No 7  
Mode Mining  
Time 2016-08-04 12:07  
Duration 121.82  
Units ppm  
Sigma Value 2  
Sequence Final  
Flags  
INV NR Gm511  
OBJEKT Gemaelde  
MATERIAL HOLZ METALL FASSUNG  
ANALYSESTELLE P5 BLAUER HINTERGRUND  
MESSAUFBAU STATIV ANLIEGEND  
FILTER  
User Login Schewe



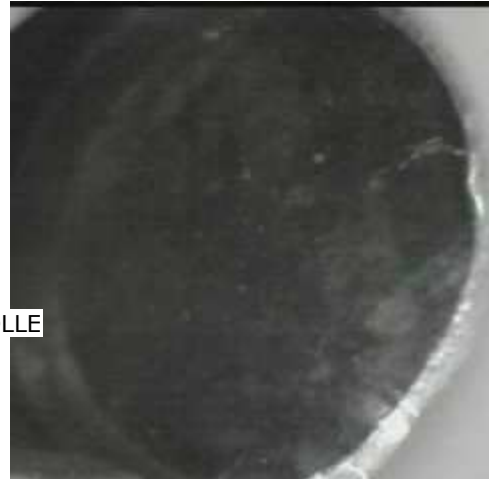
	ppm	±	Error
Ce	< LOD	:	252.012
La	< LOD	:	135.519
Ba	239.086	±	84.481
Sb	< LOD	:	40.603
Sn	< LOD	:	28.197
Cd	< LOD	:	13.843
Ag	< LOD	:	10.565
Bal	747300.938	±	2377.152
Nb	< LOD	:	30.037
Zr	< LOD	:	176.503
Y	< LOD	:	35.591
Sr	98.315	±	7.964
Rb	< LOD	:	58.157
Th	< LOD	:	1612.413
Bi	< LOD	:	1353.637
Au	81.139	±	24.830
As	< LOD	:	230.725
Se	< LOD	:	28.506
Pb	17851.250	±	337.118
Hg	183.893	±	14.451
Zn	< LOD	:	81.870
Cu	153569.531	±	1930.439
Ni	< LOD	:	60.730
Co	< LOD	:	75.898
Fe	5810.363	±	146.703
Mn	207.430	±	74.252
Cr	< LOD	:	40.494
V	< LOD	:	86.842
Ti	1616.995	±	227.225
Ca	23027.893	±	365.557
K	4925.987	±	228.690
Al	8083.936	±	859.633
P	795.402	±	82.780
Si	25045.559	±	589.194
Cl	2347.354	±	45.044
S	8814.979	±	132.275
Mg	< LOD	:	10875.514

Supervised By: \_\_\_\_\_

**Certificate of Verification**

XL3t-69288

Reading No 8  
Mode Mining  
Time 2016-08-04 12:12  
Duration 120.99  
Units ppm  
Sigma Value 2  
Sequence Final  
Flags  
INV NR Gm511  
OBJEKT Gemaelde  
MATERIAL HOLZ METALL FASSUNG  
ANALYSESTELLE P6 BLAUER HINTERGRUND KONTROLLE  
MESSAUFBAU STATIV ANLIEGEND  
FILTER  
User Login Schewe



	ppm	±	Error
Ce	< LOD	:	212.002
La	< LOD	:	97.013
Ba	113.910	±	70.693
Sb	< LOD	:	34.079
Sn	< LOD	:	23.119
Cd	< LOD	:	11.834
Ag	< LOD	:	9.047
Bal	778924.313	±	1975.338
Nb	< LOD	:	24.985
Zr	< LOD	:	146.831
Y	27.321	±	16.817
Sr	91.720	±	7.113
Rb	< LOD	:	49.823
Th	< LOD	:	1365.461
Bi	< LOD	:	1198.976
Au	43.860	±	20.767
As	< LOD	:	196.150
Se	< LOD	:	24.966
Pb	13904.353	±	254.846
Hg	140.755	±	12.454
Zn	< LOD	:	75.720
Cu	142350.313	±	1699.275
Ni	< LOD	:	57.530
Co	< LOD	:	71.651
Fe	5217.522	±	135.312
Mn	171.148	±	69.785
Cr	< LOD	:	38.475
V	< LOD	:	78.697
Ti	1497.156	±	204.297
Ca	19233.730	±	310.417
K	4365.265	±	209.528
Al	5615.572	±	675.753
P	698.780	±	68.033
Si	19860.652	±	480.970
Cl	2048.495	±	38.340
S	5695.104	±	88.090
Mg	< LOD	:	9614.425

**Certificate of Verification**

XL3t-69288

Reading No 9  
Mode Mining  
Time 2016-08-04 12:18  
Duration 122.04  
Units ppm  
Sigma Value 2  
Sequence Final  
Flags  
INV NR Gm511  
OBJEKT Gemaelde  
MATERIAL HOLZ METALL FASSUNG  
ANALYSESTELLE P7 BLAUER HINTERGRUND KONTROLLE  
MESSAUFBAU STATIV ANLIEGEND  
FILTER  
User Login Schewe



	ppm	±	Error
Ce	< LOD	:	211.449
La	< LOD	:	96.582
Ba	227.726	±	71.414
Sb	< LOD	:	53.320
Sn	23.554	±	12.562
Cd	< LOD	:	11.783
Ag	< LOD	:	7.503
Bal	785607.625	±	1876.473
Nb	< LOD	:	20.447
Zr	< LOD	:	79.637
Y	43.721	±	14.165
Sr	79.559	±	6.388
Rb	< LOD	:	41.045
Th	< LOD	:	1135.139
Bi	< LOD	:	1009.721
Au	37.424	±	18.955
As	< LOD	:	164.490
Se	< LOD	:	21.487
Pb	9731.362	±	180.562
Hg	100.454	±	10.856
Zn	< LOD	:	76.143
Cu	151314.016	±	1669.275
Ni	< LOD	:	55.591
Co	< LOD	:	65.423
Fe	4794.203	±	124.998
Mn	239.855	±	68.080
Cr	< LOD	:	37.627
V	< LOD	:	66.107
Ti	1234.273	±	201.739
Ca	17661.906	±	281.287
K	3512.950	±	189.642
Al	3644.810	±	615.676
P	658.530	±	68.110
Si	12660.975	±	373.823
Cl	1680.904	±	33.196
S	6688.489	±	94.474
Mg	< LOD	:	8400.313

Supervised By: \_\_\_\_\_