

Certificate of Verification

XL3t-69288

Reading No 1
Mode Mining
Time 2016-10-11 10:31
Duration 121.51
Units ppm
Sigma Value 2
Sequence Final
Flags
INV NR Gm521
OBJEKT TAFELGEMAELEN
MATERIAL HOLZ METALL FASSUNG
ANALYSESTELLE P1 HINTERGRUND
MESSAUFBAU STATIV anliegend
FILTER m30lo30hi30li30
User Login Raquet



	ppm	+/-	Error
Ce	-339.000	+/-	178.483
La	1.000	+/-	87.799
Ba	1.000	+/-	130.836
Sb	1.000	+/-	27.376
Sn	35.490	+/-	15.694
Cd	1.000	+/-	9.148
Ag	28.537	+/-	8.089
Bal	798946.000	+/-	1986.384
Nb	143.384	+/-	36.861
Zr	1.000	+/-	153.869
Y	1.000	+/-	31.141
Sr	276.097	+/-	12.932
Rb	1.000	+/-	60.619
Th	1.000	+/-	1568.875
Bi	1373.499	+/-	1207.145
Au	2053.273	+/-	86.173
As	12019.218	+/-	317.610
Se	79.494	+/-	56.781
Pb	58459.281	+/-	1013.451
Hg	1.000	+/-	23.329
Zn	185.800	+/-	21.964
Cu	3011.478	+/-	89.668
Ni	93.547	+/-	45.630
Co	1.000	+/-	74.059
Fe	2633.980	+/-	134.504
Mn	194.170	+/-	92.341
Cr	1.000	+/-	43.403
V	1.000	+/-	25.361
Ti	1.000	+/-	128.209
Ca	36166.477	+/-	646.193
K	2142.478	+/-	181.746
Al	3383.070	+/-	898.876
P	12182.073	+/-	317.108
Si	16543.984	+/-	639.344
Cl	3472.901	+/-	81.987
S	46575.855	+/-	795.749
Mg	1.000	+/-	13012.063

Supervised By: _____

Certificate of Verification

XL3t-69288

Reading No 2
Mode Mining
Time 2016-10-11 10:36
Duration 121.13
Units ppm
Sigma Value 2
Sequence Final
Flags
INV NR Gm521
OBJEKT TAFELGEMAELEN
MATERIAL HOLZ METALL FASSUNG
ANALYSESTELLE P2 KREUZ
MESSAUFBAU STATIV anliegend
FILTER m30lo30hi30li30
User Login Raquet



	ppm	+/-	Error
Ce	-339.000	+/-	145.094
La	1.000	+/-	66.187
Ba	1.000	+/-	83.401
Sb	1.000	+/-	30.314
Sn	223.883	+/-	20.282
Cd	1.000	+/-	8.238
Ag	874.734	+/-	25.446
Bal	813853.813	+/-	1547.376
Nb	56.822	+/-	21.343
Zr	1.000	+/-	114.468
Y	1.000	+/-	19.015
Sr	261.559	+/-	10.464
Rb	1.000	+/-	35.128
Th	1.000	+/-	1030.950
Bi	1.000	+/-	1285.000
Au	1268.431	+/-	61.987
As	5386.310	+/-	196.277
Se	35.729	+/-	25.521
Pb	30423.809	+/-	531.210
Hg	167.300	+/-	24.121
Zn	191.600	+/-	30.732
Cu	26912.803	+/-	495.147
Ni	1.000	+/-	45.963
Co	1.000	+/-	80.372
Fe	16506.902	+/-	350.385
Mn	137.423	+/-	79.086
Cr	53.772	+/-	26.201
V	33.322	+/-	23.387
Ti	215.168	+/-	126.408
Ca	34235.438	+/-	574.369
K	4691.903	+/-	272.919
Al	2599.475	+/-	848.135
P	24271.752	+/-	468.099
Si	15682.934	+/-	639.898
Cl	7770.642	+/-	142.764
S	14144.563	+/-	253.825
Mg	1.000	+/-	13050.699

Supervised By: _____

Certificate of Verification

XL3t-69288

Reading No 3
Mode Mining
Time 2016-10-11 10:40
Duration 120.50
Units ppm
Sigma Value 2
Sequence Final
Flags
INV NR Gm521
OBJEKT TAFELGEMAELENDE
MATERIAL HOLZ METALL FASSUNG
ANALYSESTELLE P3 MITRABAND
MESSAUFBAU STATIV anliegend
FILTER m30lo30hi30li30
User Login Raquet



	ppm	+/-	Error
Ce	-339.000	+/-	118.730
La	1.000	+/-	54.319
Ba	1.000	+/-	58.095
Sb	1.000	+/-	28.435
Sn	52.075	+/-	11.460
Cd	1.000	+/-	7.661
Ag	23.162	+/-	5.706
Bal	772502.188	+/-	1499.375
Nb	38.401	+/-	14.734
Zr	1.000	+/-	70.937
Y	1.000	+/-	12.943
Sr	335.025	+/-	9.589
Rb	1.000	+/-	38.742
Th	1.000	+/-	734.938
Bi	1.000	+/-	911.938
Au	3555.505	+/-	84.338
As	5391.524	+/-	148.874
Se	32.570	+/-	23.265
Pb	20935.645	+/-	313.821
Hg	1.000	+/-	16.047
Zn	254.061	+/-	21.310
Cu	491.976	+/-	29.854
Ni	1.000	+/-	33.571
Co	1.000	+/-	67.667
Fe	14341.667	+/-	305.053
Mn	119.943	+/-	74.874
Cr	131.802	+/-	26.321
V	1.000	+/-	34.893
Ti	311.323	+/-	125.517
Ca	53016.996	+/-	765.107
K	3078.501	+/-	183.718
Al	5825.825	+/-	1007.418
P	60220.574	+/-	894.118
Si	30663.213	+/-	917.650
Cl	3235.166	+/-	70.370
S	25442.898	+/-	391.437
Mg	1.000	+/-	9638.290

Supervised By: _____

Certificate of Verification

XL3t-69288

Reading No 4
Mode Mining
Time 2016-10-11 10:44
Duration 120.04
Units ppm
Sigma Value 2
Sequence Final
Flags
INV NR Gm521
OBJEKT TAFELGEMAELEN
MATERIAL HOLZ METALL FASSUNG
ANALYSESTELLE P4 MANTELBORTE
MESSAUFBAU STATIV anliegend
FILTER m30lo30hi30li30
User Login Raquet



	ppm	+/-	Error
Ce	-339.000	+/-	115.315
La	1.000	+/-	52.834
Ba	1.000	+/-	56.438
Sb	1.000	+/-	23.739
Sn	53.628	+/-	11.224
Cd	7.700	+/-	7.326
Ag	18.290	+/-	5.407
Bal	783366.250	+/-	1451.016
Nb	37.163	+/-	15.578
Zr	1.000	+/-	68.636
Y	1.000	+/-	13.713
Sr	283.965	+/-	8.828
Rb	27.994	+/-	26.685
Th	1.000	+/-	770.767
Bi	1.000	+/-	910.399
Au	3431.820	+/-	82.696
As	5732.112	+/-	155.912
Se	41.251	+/-	29.465
Pb	22724.385	+/-	340.095
Hg	1.000	+/-	13.907
Zn	252.875	+/-	20.793
Cu	470.432	+/-	29.302
Ni	1.000	+/-	32.979
Co	1.000	+/-	68.051
Fe	13932.501	+/-	298.742
Mn	158.059	+/-	74.557
Cr	135.418	+/-	25.862
V	1.000	+/-	30.265
Ti	249.380	+/-	130.541
Ca	50783.047	+/-	740.358
K	3636.260	+/-	194.337
Al	4584.756	+/-	932.207
P	60411.633	+/-	898.441
Si	25504.604	+/-	843.642
Cl	2180.048	+/-	55.221
S	21976.500	+/-	344.410
Mg	1.000	+/-	9121.881

Supervised By: _____

Certificate of Verification

XL3t-69288

Reading No 5
Mode Mining
Time 2016-10-11 10:47
Duration 120.12
Units ppm
Sigma Value 2
Sequence Final
Flags
INV NR Gm521
OBJEKT TAFELGEMAELEN
MATERIAL HOLZ METALL FASSUNG
ANALYSESTELLE P5 MANTEL QUERRIEGEL
MESSAUFBAU STATIV anliegend
FILTER m30lo30hi30li30
User Login Raquet



	ppm	+/-	Error
Ce	-339.000	+/-	105.689
La	1.000	+/-	48.224
Ba	1.000	+/-	51.241
Sb	1.000	+/-	28.395
Sn	178.073	+/-	14.440
Cd	8.702	+/-	6.821
Ag	502.498	+/-	15.403
Bal	856404.938	+/-	986.218
Nb	41.193	+/-	13.569
Zr	1.000	+/-	66.992
Y	1.000	+/-	11.817
Sr	344.479	+/-	9.062
Rb	1.000	+/-	22.105
Th	1.000	+/-	674.554
Bi	543.323	+/-	522.455
Au	365.927	+/-	32.127
As	5491.300	+/-	137.681
Se	32.820	+/-	23.443
Pb	20025.596	+/-	271.182
Hg	1.000	+/-	11.802
Zn	96.392	+/-	12.533
Cu	1446.358	+/-	46.426
Ni	1.000	+/-	30.666
Co	1.000	+/-	24.293
Fe	390.779	+/-	54.850
Mn	1.000	+/-	99.281
Cr	1.000	+/-	29.864
V	1.000	+/-	20.276
Ti	1.000	+/-	89.584
Ca	48437.152	+/-	655.659
K	1454.827	+/-	176.236
Al	3049.643	+/-	746.856
P	11276.530	+/-	260.143
Si	14304.981	+/-	556.498
Cl	4876.176	+/-	86.118
S	30728.283	+/-	420.479
Mg	1.000	+/-	7489.240

Supervised By: _____

Certificate of Verification

XL3t-69288

Reading No 6
Mode Mining
Time 2016-10-11 10:51
Duration 120.74
Units ppm
Sigma Value 2
Sequence Final
Flags
INV NR Gm521
OBJEKT TAFELGEMAELEN
MATERIAL HOLZ METALL FASSUNG
ANALYSESTELLE P6 KRONE AUF TIARA
MESSAUFBAU STATIV anliegend
FILTER m30lo30hi30li30
User Login Raquet



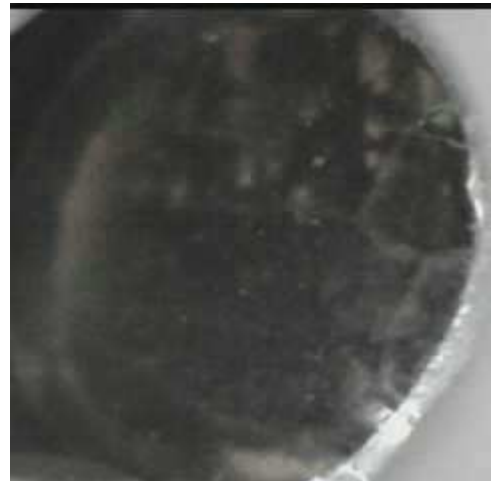
	ppm	+/-	Error
Ce	-339.000	+/-	122.614
La	1.000	+/-	56.394
Ba	1.000	+/-	60.371
Sb	1.000	+/-	27.698
Sn	173.776	+/-	14.461
Cd	1.000	+/-	7.181
Ag	14.060	+/-	5.535
Bal	776254.813	+/-	1516.700
Nb	46.833	+/-	16.596
Zr	1.000	+/-	82.621
Y	1.000	+/-	14.528
Sr	324.263	+/-	9.667
Rb	1.000	+/-	35.799
Th	1.000	+/-	816.512
Bi	1.000	+/-	1049.569
Au	2639.699	+/-	73.019
As	5877.794	+/-	164.960
Se	33.226	+/-	23.733
Pb	24600.672	+/-	381.486
Hg	1.000	+/-	14.335
Zn	196.485	+/-	18.813
Cu	352.913	+/-	26.848
Ni	1.000	+/-	33.736
Co	1.000	+/-	72.155
Fe	16178.360	+/-	345.193
Mn	83.584	+/-	73.480
Cr	144.328	+/-	27.463
V	1.000	+/-	37.833
Ti	314.430	+/-	140.667
Ca	57233.723	+/-	854.061
K	3712.973	+/-	205.544
Al	4889.858	+/-	977.665
P	50029.859	+/-	802.030
Si	31675.809	+/-	924.583
Cl	2428.669	+/-	60.019
S	22793.887	+/-	370.091
Mg	1.000	+/-	14636.408

Supervised By: _____

Certificate of Verification

XL3t-69288

Reading No 7
Mode Mining
Time 2016-10-11 10:55
Duration 120.32
Units ppm
Sigma Value 2
Sequence Final
Flags
INV NR Gm521
OBJEKT TAFELGEMAELEN
MATERIAL HOLZ METALL FASSUNG
ANALYSESTELLE P7 KELCH
MESSAUFBAU STATIV anliegend
FILTER m30lo30hi30li30
User Login Raquet



	ppm	+/-	Error
Ce	-339.000	+/-	118.434
La	1.000	+/-	54.049
Ba	1.000	+/-	58.173
Sb	1.000	+/-	19.243
Sn	26.691	+/-	10.857
Cd	1.000	+/-	6.619
Ag	14.656	+/-	5.385
Bal	845266.188	+/-	1070.897
Nb	28.372	+/-	13.155
Zr	1.000	+/-	66.556
Y	1.000	+/-	11.524
Sr	320.415	+/-	9.011
Rb	1.000	+/-	36.381
Th	1.000	+/-	665.059
Bi	1.000	+/-	817.007
Au	3614.050	+/-	82.812
As	4335.042	+/-	128.979
Se	25.647	+/-	18.319
Pb	17169.525	+/-	256.010
Hg	1.000	+/-	14.012
Zn	197.950	+/-	20.980
Cu	4130.925	+/-	94.518
Ni	1.000	+/-	32.328
Co	1.000	+/-	65.489
Fe	13461.072	+/-	282.315
Mn	152.975	+/-	74.178
Cr	114.904	+/-	25.752
V	1.000	+/-	31.847
Ti	191.882	+/-	128.775
Ca	49700.098	+/-	705.136
K	4565.250	+/-	208.343
Al	1914.120	+/-	743.915
P	14549.782	+/-	305.944
Si	21862.639	+/-	707.889
Cl	3621.953	+/-	73.177
S	14735.873	+/-	236.471
Mg	1.000	+/-	7449.615

Supervised By: _____

Certificate of Verification

XL3t-69288

Reading No 8
Mode Mining
Time 2016-10-11 11:01
Duration 120.49
Units ppm
Sigma Value 2
Sequence Final
Flags
INV NR Gm521
OBJEKT TAFELGEMAELEN
MATERIAL HOLZ METALL FASSUNG
ANALYSESTELLE P8 KREUZSTAB
MESSAUFBAU STATIV anliegend
FILTER m30lo30hi30li30
User Login Raquet



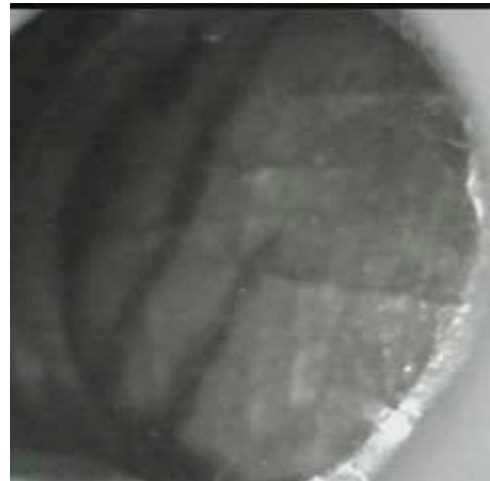
	ppm	+/-	Error
Ce	-339.000	+/-	180.529
La	1.000	+/-	105.710
Ba	1.000	+/-	134.064
Sb	1.000	+/-	28.389
Sn	39.435	+/-	16.765
Cd	13.244	+/-	11.060
Ag	146.430	+/-	12.829
Bal	823357.000	+/-	1755.675
Nb	121.724	+/-	37.624
Zr	1.000	+/-	117.301
Y	1.000	+/-	31.506
Sr	256.591	+/-	12.467
Rb	1.000	+/-	61.744
Th	1.000	+/-	1582.659
Bi	1.000	+/-	1590.525
Au	1.000	+/-	37.187
As	12644.421	+/-	332.097
Se	45.481	+/-	32.486
Pb	60074.492	+/-	1070.011
Hg	1.000	+/-	22.529
Zn	141.465	+/-	15.492
Cu	1013.445	+/-	49.441
Ni	73.449	+/-	44.520
Co	1.000	+/-	65.027
Fe	2076.823	+/-	121.461
Mn	112.941	+/-	87.125
Cr	35.545	+/-	28.165
V	1.000	+/-	20.828
Ti	1.000	+/-	108.062
Ca	13908.746	+/-	329.486
K	1324.919	+/-	166.012
Al	4325.518	+/-	897.594
P	5075.132	+/-	226.697
Si	19971.596	+/-	703.902
Cl	4683.125	+/-	111.381
S	50558.559	+/-	982.121
Mg	1.000	+/-	13908.929

Supervised By: _____

Certificate of Verification

XL3t-69288

Reading No 9
Mode Mining
Time 2016-10-11 11:05
Duration 121.45
Units ppm
Sigma Value 2
Sequence Final
Flags
INV NR Gm521
OBJEKT TAFELGEMAELEN
MATERIAL HOLZ METALL FASSUNG
ANALYSESTELLE P9 KREUZSTAB
MESSAUFBAU STATIV anliegend
FILTER m30lo30hi30li30
User Login Raquet



	ppm	+/-	Error
Ce	-339.000	+/-	130.918
La	1.000	+/-	59.917
Ba	1.000	+/-	80.306
Sb	91.159	+/-	22.964
Sn	3226.209	+/-	59.207
Cd	32.238	+/-	9.393
Ag	849.866	+/-	23.000
Bal	895816.625	+/-	835.061
Nb	34.584	+/-	16.222
Zr	1.000	+/-	63.972
Y	1.000	+/-	14.109
Sr	288.941	+/-	9.214
Rb	1.000	+/-	26.255
Th	1.000	+/-	798.588
Bi	1.000	+/-	820.027
Au	1.000	+/-	21.049
As	4304.139	+/-	149.329
Se	17.605	+/-	12.783
Pb	22469.004	+/-	349.535
Hg	1.000	+/-	13.613
Zn	625.832	+/-	30.493
Cu	11036.805	+/-	209.283
Ni	1.000	+/-	34.989
Co	1.000	+/-	53.363
Fe	7098.656	+/-	191.829
Mn	1.000	+/-	82.432
Cr	72.194	+/-	22.210
V	1.000	+/-	18.655
Ti	1.000	+/-	100.016
Ca	25603.209	+/-	571.605
K	3899.075	+/-	377.359
Al	1358.224	+/-	713.607
P	1748.378	+/-	134.200
Si	8597.516	+/-	461.490
Cl	2561.385	+/-	64.784
S	10268.345	+/-	189.576
Mg	1.000	+/-	7556.437

Supervised By: _____

Certificate of Verification

XL3t-69288

Reading No 10
Mode Mining
Time 2016-10-11 11:11
Duration 121.27
Units ppm
Sigma Value 2
Sequence Final
Flags
INV NR Gm521
OBJEKT TAFELGEMAELEN
MATERIAL HOLZ METALL FASSUNG
ANALYSESTELLE P10 PRESSBROKAT
MESSAUFBAU STATIV anliegend
FILTER m30lo30hi30li30
User Login Raquet



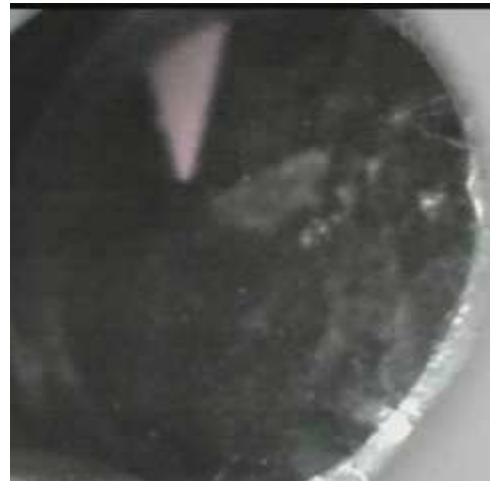
	ppm	+/-	Error
Ce	412.839	+/-	331.561
La	359.966	+/-	150.938
Ba	518.850	+/-	161.077
Sb	1.000	+/-	47.414
Sn	383.010	+/-	38.920
Cd	1.000	+/-	17.158
Ag	24.014	+/-	13.260
Bal	745053.875	+/-	4209.956
Nb	325.349	+/-	93.713
Zr	1.000	+/-	262.941
Y	1.000	+/-	73.560
Sr	85.554	+/-	19.037
Rb	1.000	+/-	151.497
Th	1.000	+/-	3314.480
Bi	1.000	+/-	2601.664
Au	1.000	+/-	78.330
As	18841.934	+/-	600.567
Se	68.654	+/-	49.039
Pb	140547.406	+/-	3189.152
Hg	1.000	+/-	54.806
Zn	177.925	+/-	24.339
Cu	140.227	+/-	34.851
Ni	1.000	+/-	94.723
Co	79.632	+/-	53.027
Fe	940.704	+/-	120.954
Mn	289.464	+/-	123.938
Cr	93.441	+/-	39.602
V	1.000	+/-	34.687
Ti	1.000	+/-	175.627
Ca	16425.266	+/-	438.069
K	1866.131	+/-	222.710
Al	3032.804	+/-	1035.037
P	3193.229	+/-	207.516
Si	14873.452	+/-	636.920
Cl	4950.486	+/-	134.964
S	46975.797	+/-	1036.397
Mg	1.000	+/-	10857.354

Supervised By: _____

Certificate of Verification

XL3t-69288

Reading No 11
Mode Mining
Time 2016-10-11 11:16
Duration 122.21
Units ppm
Sigma Value 2
Sequence Final
Flags
INV NR Gm521
OBJEKT TAFELGEMAELEN
MATERIAL HOLZ METALL FASSUNG
ANALYSESTELLE P11 PRESSBROKAT 2
MESSAUFBAU STATIV anliegend
FILTER m30lo30hi30li30
User Login Raquet



	ppm	+/-	Error
Ce	-339.000	+/-	238.137
La	1.000	+/-	108.411
Ba	595.773	+/-	122.011
Sb	464.074	+/-	45.056
Sn	19341.693	+/-	386.933
Cd	187.538	+/-	21.134
Ag	329.218	+/-	19.610
Bal	770048.500	+/-	2669.334
Nb	93.955	+/-	39.573
Zr	1.000	+/-	140.147
Y	1.000	+/-	34.181
Sr	230.512	+/-	13.339
Rb	1.000	+/-	64.516
Th	1.000	+/-	1740.956
Bi	1.000	+/-	1847.611
Au	1.000	+/-	47.855
As	8056.506	+/-	316.872
Se	31.890	+/-	22.778
Pb	55988.168	+/-	1121.374
Hg	1.000	+/-	26.980
Zn	198.422	+/-	30.548
Cu	14580.337	+/-	342.715
Ni	1.000	+/-	59.687
Co	1.000	+/-	90.372
Fe	12814.094	+/-	366.344
Mn	150.291	+/-	120.819
Cr	814.844	+/-	42.117
V	1.000	+/-	55.260
Ti	1.000	+/-	279.152
Ca	24322.469	+/-	540.598
K	10960.622	+/-	397.845
Al	5118.569	+/-	983.112
P	3147.885	+/-	183.483
Si	17077.008	+/-	638.502
Cl	4537.463	+/-	108.841
S	36645.730	+/-	738.321
Mg	14264.446	+/-	10274.146

Supervised By: _____

Certificate of Verification

XL3t-69288

Reading No 12
Mode Mining
Time 2016-10-11 11:21
Duration 120.08
Units ppm
Sigma Value 2
Sequence Final
Flags
INV NR Gm521
OBJEKT TAFELGEMAELEN
MATERIAL HOLZ METALL FASSUNG
ANALYSESTELLE P12 PRESSBROKAT 3
MESSAUFBAU STATIV anliegend
FILTER m30lo30hi30li30
User Login Raquet



	ppm	+/-	Error
Ce	-339.000	+/-	150.845
La	1.000	+/-	71.574
Ba	1.000	+/-	104.807
Sb	1.000	+/-	27.240
Sn	5645.144	+/-	98.829
Cd	39.546	+/-	10.930
Ag	236.013	+/-	13.050
Bal	776083.313	+/-	1824.299
Nb	1.000	+/-	22.841
Zr	1.000	+/-	61.405
Y	1.000	+/-	16.101
Sr	158.666	+/-	13.568
Rb	1.000	+/-	29.394
Th	1.000	+/-	877.287
Bi	1.000	+/-	834.117
Au	1.000	+/-	76.742
As	4899.303	+/-	162.093
Se	21.457	+/-	14.351
Pb	19773.619	+/-	329.139
Hg	9887.955	+/-	164.324
Zn	560.322	+/-	44.081
Cu	1223.879	+/-	53.007
Ni	1.000	+/-	44.310
Co	1.000	+/-	60.379
Fe	1644.203	+/-	109.676
Mn	220.192	+/-	98.034
Cr	38.742	+/-	25.318
V	1.000	+/-	33.008
Ti	1.000	+/-	115.162
Ca	75758.203	+/-	1106.919
K	4808.681	+/-	240.412
Al	8251.352	+/-	1208.124
P	23092.041	+/-	457.595
Si	18055.406	+/-	739.753
Cl	2572.310	+/-	65.921
S	47029.762	+/-	692.760
Mg	1.000	+/-	10578.121

Supervised By: _____

Certificate of Verification

XL3t-69288

Reading No 13
Mode Mining
Time 2016-10-11 11:26
Duration 120.98
Units ppm
Sigma Value 2
Sequence Final
Flags
INV NR Gm521
OBJEKT TAFELGEMAELEN
MATERIAL HOLZ METALL FASSUNG
ANALYSESTELLE P13 WAPPEN
MESSAUFBAU STATIV anliegend
FILTER m30lo30hi30li30
User Login Raquet



	ppm	+/-	Error
Ce	-339.000	+/-	408.043
La	1.000	+/-	167.631
Ba	188.305	+/-	121.837
Sb	1.000	+/-	38.177
Sn	51.547	+/-	23.914
Cd	1.000	+/-	12.498
Ag	392.258	+/-	24.384
Bal	786858.625	+/-	2691.984
Nb	170.862	+/-	57.084
Zr	1.000	+/-	170.535
Y	1.000	+/-	46.836
Sr	190.010	+/-	14.235
Rb	1.000	+/-	93.669
Th	1.000	+/-	2228.529
Bi	1.000	+/-	2234.040
Au	1.000	+/-	49.239
As	17065.684	+/-	464.666
Se	71.918	+/-	51.370
Pb	86277.398	+/-	1746.057
Hg	1.000	+/-	29.830
Zn	169.139	+/-	18.043
Cu	649.263	+/-	45.465
Ni	65.124	+/-	51.442
Co	143.127	+/-	49.773
Fe	1153.897	+/-	110.387
Mn	212.483	+/-	104.509
Cr	90.239	+/-	29.527
V	1.000	+/-	35.139
Ti	1.000	+/-	155.362
Ca	4409.539	+/-	171.959
K	676.841	+/-	151.524
Al	3920.211	+/-	1025.874
P	3372.016	+/-	218.062
Si	15162.987	+/-	649.333
Cl	5571.840	+/-	145.242
S	53858.156	+/-	1186.599
Mg	19278.537	+/-	11169.229

Supervised By: _____

Certificate of Verification

XL3t-69288

Reading No 14
Mode Mining
Time 2016-10-11 11:32
Duration 122.21
Units ppm
Sigma Value 2
Sequence Final
Flags
INV NR Gm521
OBJEKT TAFELGEMAELEN
MATERIAL HOLZ METALL FASSUNG
ANALYSESTELLE P14 MITRA FARBLACK
MESSAUFBAU STATIV anliegend
FILTER m30lo30hi30li30
User Login Raquet



	ppm	+/-	Error
Ce	-339.000	+/-	102.779
La	1.000	+/-	46.946
Ba	1.000	+/-	50.703
Sb	25.747	+/-	18.172
Sn	83.925	+/-	10.985
Cd	1.000	+/-	9.824
Ag	8.693	+/-	4.668
Bal	865161.375	+/-	869.791
Nb	1.000	+/-	10.688
Zr	1.000	+/-	30.079
Y	1.000	+/-	6.713
Sr	260.522	+/-	8.422
Rb	1.000	+/-	12.493
Th	1.000	+/-	410.458
Bi	1.000	+/-	429.047
Au	1.000	+/-	36.844
As	2264.016	+/-	76.116
Se	11.552	+/-	8.385
Pb	7445.630	+/-	102.381
Hg	3960.851	+/-	57.268
Zn	313.180	+/-	24.511
Cu	497.063	+/-	27.438
Ni	1.000	+/-	28.908
Co	1.000	+/-	25.231
Fe	688.729	+/-	62.530
Mn	153.497	+/-	72.111
Cr	21.447	+/-	21.304
V	1.000	+/-	25.041
Ti	1.000	+/-	144.384
Ca	52870.418	+/-	638.764
K	6040.341	+/-	215.168
Al	7709.491	+/-	850.462
P	9803.533	+/-	229.492
Si	13563.646	+/-	526.482
Cl	2422.571	+/-	51.520
S	26693.807	+/-	328.680
Mg	1.000	+/-	7335.184

Supervised By: _____