

mRFA -Ergebnisse

XL3t-69288

Reading No 1  
Mode Mining  
Time 2017-07-27 11:08  
Duration 121.16  
Units ppm  
Sigma Value 2  
Sequence Final  
Flags  
INV NR Gm237  
OBJEKT TAFELGEMAELENDE  
MATERIAL HOLZ METALL FASSUNG  
ANALYSESTELLE P1 GOLDGRUND  
MESSAUFBAU STATIV  
FILTER m30lo30hi30li30  
User Login Raquet



	ppm	+/-	Error
Ce	-339.000	+/-	89.428
La	1.000	+/-	41.445
Ba	1.000	+/-	44.255
Sb	1.000	+/-	20.625
Sn	1.000	+/-	7.484
Cd	1.000	+/-	9.434
Ag	8.090	+/-	4.208
Bal	712200.188	+/-	1351.396
Nb	1.000	+/-	1.680
Zr	1.000	+/-	6.167
Y	1.000	+/-	1.235
Sr	464.229	+/-	7.402
Rb	12.925	+/-	4.307
Th	1.000	+/-	88.745
Bi	1.000	+/-	69.004
<b>Au</b>	<b>2618.621</b>	+/-	45.921
As	16.290	+/-	8.105
Se	1.000	+/-	5.338
Pb	86.692	+/-	6.716
Hg	1.000	+/-	5.275
Zn	151.982	+/-	14.097
Cu	13.230	+/-	12.201
Ni	1.000	+/-	24.279
Co	1.000	+/-	56.126
<b>Fe</b>	<b>16597.396</b>	+/-	209.720
Mn	1.000	+/-	57.546
Cr	130.973	+/-	26.328
V	52.437	+/-	26.896
<b>Ti</b>	<b>969.976</b>	+/-	155.593
Ca	173069.859	+/-	982.200
K	5516.589	+/-	218.473
Al	12475.131	+/-	1461.558
P	34591.727	+/-	415.132
Si	30825.348	+/-	907.291
Cl	410.888	+/-	35.256
S	9787.424	+/-	130.364
Mg	1.000	+/-	11533.961

mRFA -Ergebnisse

XL3t-69288

Reading No 2  
Mode Mining  
Time 2017-07-27 11:12  
Duration 120.11  
Units ppm  
Sigma Value 2  
Sequence Final  
Flags  
INV NR Gm237  
OBJEKT TAFELGEMAELEN  
MATERIAL HOLZ METALL FASSUNG  
ANALYSESTELLE P2 NIMBUS MARIA  
MESSAUFBAU STATIV  
FILTER m30lo30hi30li30  
User Login Raquet



	ppm	+/-	Error
Ce	-339.000	+/-	181.092
La	1.000	+/-	86.413
Ba	1.000	+/-	90.983
Sb	1.000	+/-	28.307
<b>Sn</b>	<b>203.571</b>	+/-	21.542
Cd	1.000	+/-	9.474
<b>Ag</b>	<b>314.124</b>	+/-	17.547
Bal	820866.688	+/-	1865.983
Nb	48.185	+/-	40.151
Zr	1.000	+/-	126.206
Y	1.000	+/-	32.748
Sr	272.179	+/-	13.268
Rb	1.000	+/-	93.111
Th	1.000	+/-	2210.925
Bi	1.000	+/-	1315.352
Au	1.000	+/-	47.396
As	12954.015	+/-	366.493
Se	1.000	+/-	19.282
<b>Pb</b>	<b>58310.941</b>	+/-	1172.023
Hg	1.000	+/-	21.831
Zn	123.443	+/-	16.751
Cu	2840.890	+/-	93.225
Ni	71.094	+/-	45.237
Co	94.813	+/-	36.563
Fe	187.592	+/-	66.845
Mn	161.076	+/-	90.511
Cr	1.000	+/-	35.371
V	1.000	+/-	19.238
Ti	1.000	+/-	98.079
Ca	20352.146	+/-	475.688
K	1317.956	+/-	191.917
Al	3905.418	+/-	937.238
P	5840.393	+/-	245.086
Si	14019.653	+/-	636.487
Cl	3298.188	+/-	95.789
S	37377.063	+/-	855.611
Mg	17440.590	+/-	10015.797

mRFA -Ergebnisse

XL3t-69288

Reading No 3  
Mode Mining  
Time 2017-07-27 11:17  
Duration 121.09  
Units ppm  
Sigma Value 2  
Sequence Final  
Flags  
INV NR Gm237  
OBJEKT TAFELGEMAELEN  
MATERIAL HOLZ METALL FASSUNG  
ANALYSESTELLE P3 BROKAT JUNGER KOENIG  
MESSAUFBAU STATIV  
FILTER m30lo30hi30li30  
User Login Raquet



	ppm	+/-	Error
Ce	127.870	+/-	336.294
La	202.362	+/-	152.763
Ba	1.000	+/-	195.404
Sb	1.000	+/-	42.854
<b>Sn</b>	<b>42057.008</b>	+/-	773.378
Cd	152.170	+/-	25.008
<b>Ag</b>	<b>1423.184</b>	+/-	44.288
Bal	850255.063	+/-	1823.863
Nb	1.000	+/-	36.954
Zr	1.000	+/-	97.633
Y	1.000	+/-	25.127
Sr	190.416	+/-	10.990
Rb	1.000	+/-	65.094
Th	1.000	+/-	1584.481
Bi	1.000	+/-	1054.418
<b>Au</b>	<b>1274.840</b>	+/-	65.802
As	1.000	+/-	199.015
Se	1.000	+/-	19.987
<b>Pb</b>	<b>33119.613</b>	<b>+/-</b>	671.597
<b>Hg</b>	<b>70.498</b>	+/-	18.460
Zn	94.537	+/-	22.158
Cu	274.232	+/-	37.486
Ni	1.000	+/-	65.079
Co	110.661	+/-	53.938
<b>Fe</b>	<b>660.429</b>	+/-	101.417
Mn	1.000	+/-	118.649
Cr	122.999	+/-	28.977
V	1.000	+/-	23.356
Ti	1.000	+/-	121.045
Ca	24841.934	+/-	740.576
K	5485.345	+/-	483.298
Al	1288.266	+/-	993.052
P	4783.242	+/-	221.467
Si	21009.719	+/-	865.461
Cl	2634.256	+/-	89.073
S	9481.319	+/-	246.909
Mg	1.000	+/-	10606.088

mRFA -Ergebnisse

XL3t-69288

Reading No 4  
Mode Mining  
Time 2017-07-27 11:22  
Duration 121.15  
Units ppm  
Sigma Value 2  
Sequence Final  
Flags  
INV NR Gm237  
OBJEKT TAFELGEMAELEN  
MATERIAL HOLZ METALL FASSUNG  
ANALYSESTELLE P4 BROKAT ALTER KOENIG  
MESSAUFBAU STATIV  
FILTER m30lo30hi30li30  
User Login Raquet



	ppm	+/-	Error
Ce	-339.000	+/-	143.624
La	1.000	+/-	65.844
Ba	1.000	+/-	69.578
Sb	1.000	+/-	22.511
<b>Sn</b>	<b>6611.216</b>	+/-	109.249
Cd	45.420	+/-	10.912
<b>Ag</b>	<b>112.957</b>	+/-	9.642
Bal	882926.250	+/-	1019.359
Nb	26.399	+/-	22.012
Zr	1.000	+/-	74.943
Y	1.000	+/-	18.236
Sr	163.137	+/-	7.946
Rb	1.000	+/-	48.073
Th	1.000	+/-	1181.295
Bi	1.000	+/-	817.374
<b>Au</b>	<b>1.000</b>	+/-	28.412
As	4906.979	+/-	183.326
Se	1.000	+/-	14.697
<b>Pb</b>	<b>29452.701</b>	+/-	504.196
Hg	1.000	+/-	13.867
<b>Zn</b>	<b>1128.810</b>	+/-	43.307
<b>Cu</b>	<b>13572.016</b>	+/-	268.894
Ni	1.000	+/-	49.949
Co	129.683	+/-	38.600
<b>Fe</b>	<b>887.116</b>	+/-	77.762
Mn	1.000	+/-	87.787
Cr	21.557	+/-	20.810
V	1.000	+/-	19.094
Ti	1.000	+/-	85.793
Ca	28817.428	+/-	527.843
K	5241.121	+/-	238.605
Al	934.518	+/-	527.728
P	909.803	+/-	99.826
Si	8449.498	+/-	383.777
Cl	2371.326	+/-	56.925
S	13292.108	+/-	249.160
Mg	1.000	+/-	5929.701

mRFA -Ergebnisse

XL3t-69288

Reading No 5  
Mode Mining  
Time 2017-07-27 11:26  
Duration 121.80  
Units ppm  
Sigma Value 2  
Sequence Final  
Flags  
INV NR Gm237  
OBJEKT TAFELGEMAELEN  
MATERIAL HOLZ METALL FASSUNG  
ANALYSESTELLE P5 BROKAT ALTER KOENIG  
MESSAUFBAU STATIV  
FILTER m30lo30hi30li30  
User Login Raquet



	ppm	+/-	Error
Ce	-339.000	+/-	164.480
La	1.000	+/-	75.267
Ba	1.000	+/-	79.688
Sb	242.820	+/-	30.173
<b>Sn</b>	<b>10592.080</b>	+/-	168.097
Cd	75.878	+/-	13.248
<b>Ag</b>	<b>14.529</b>	+/-	7.036
Bal	824726.875	+/-	1480.977
Nb	33.861	+/-	23.338
Zr	1.000	+/-	78.278
Y	1.000	+/-	19.769
Sr	199.894	+/-	9.001
Rb	1.000	+/-	43.594
Th	1.000	+/-	1118.587
Bi	1.000	+/-	873.234
<b>Au</b>	<b>1.000</b>	+/-	25.357
As	1882.702	+/-	172.710
Se	1.000	+/-	15.084
<b>Pb</b>	<b>32340.344</b>	+/-	528.706
Hg	1.000	+/-	14.424
<b>Zn</b>	<b>892.561</b>	+/-	37.557
<b>Cu</b>	<b>427.693</b>	+/-	33.268
Ni	1.000	+/-	43.361
Co	1.000	+/-	36.358
Fe	362.495	+/-	68.861
Mn	1.000	+/-	87.200
Cr	61.467	+/-	23.318
V	1.000	+/-	18.620
Ti	1.000	+/-	97.221
Ca	109181.289	+/-	1624.572
K	1378.548	+/-	375.056
Al	1903.187	+/-	928.936
P	1.000	+/-	106.110
Si	9897.128	+/-	537.305
Cl	149.215	+/-	39.160
S	5637.483	+/-	125.310
Mg	1.000	+/-	8288.322

mRFA -Ergebnisse

XL3t-69288

Reading No 6  
Mode Mining  
Time 2017-07-27 11:34  
Duration 121.82  
Units ppm  
Sigma Value 2  
Sequence Final  
Flags  
INV NR Gm237  
OBJEKT TAFELGEMAELEN  
MATERIAL HOLZ METALL FASSUNG  
ANALYSESTELLE P6 MANTELSAUM MARIA  
MESSAUFBAU STATIV  
FILTER m30lo30hi30li30  
User Login Raquet

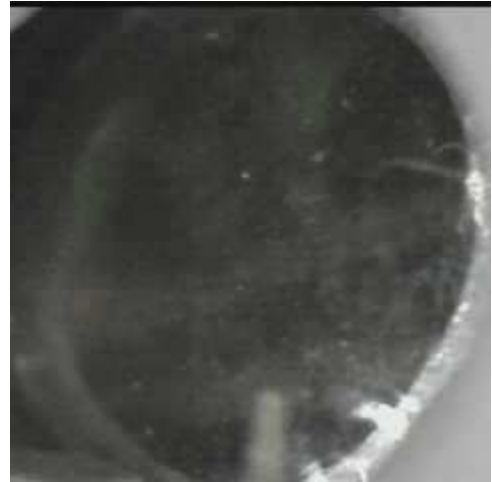


	ppm	+/-	Error
Ce	-339.000	+/-	139.969
La	1.000	+/-	64.384
Ba	1.000	+/-	68.505
Sb	32.476	+/-	23.837
<b>Sn</b>	<b>207.577</b>	+/-	17.924
Cd	1.000	+/-	7.941
<b>Ag</b>	<b>279.983</b>	+/-	14.226
Bal	834377.688	+/-	1432.776
Nb	1.000	+/-	25.318
Zr	1.000	+/-	71.914
Y	1.000	+/-	17.613
Sr	199.981	+/-	9.050
Rb	1.000	+/-	44.179
Th	1.000	+/-	1022.674
Bi	1.000	+/-	794.319
<b>Au</b>	<b>217.337</b>	+/-	36.986
As	3839.189	+/-	173.513
Se	1.000	+/-	16.893
<b>Pb</b>	<b>22490.182</b>	+/-	383.287
Hg	1.000	+/-	13.979
Zn	1.000	+/-	39.584
<b>Cu</b>	<b>86162.039</b>	<b>+/-</b>	1124.635
Ni	1.000	+/-	35.966
Co	1.000	+/-	37.195
<b>Fe</b>	<b>2227.545</b>	+/-	95.502
Mn	1.000	+/-	71.309
Cr	1.000	+/-	21.683
V	1.000	+/-	21.140
Ti	1.000	+/-	150.198
Ca	21866.793	+/-	348.312
K	2724.152	+/-	183.014
Al	1604.391	+/-	572.909
P	1730.782	+/-	96.745
Si	9609.036	+/-	368.376
Cl	2049.798	+/-	43.256
S	10381.069	+/-	158.222
Mg	1.000	+/-	5605.753

mRFA -Ergebnisse

XL3t-69288

Reading No 7  
Mode Mining  
Time 2017-07-27 11:37  
Duration 120.85  
Units ppm  
Sigma Value 2  
Sequence Final  
Flags  
INV NR Gm237  
OBJEKT TAFELGEMAELEN  
MATERIAL HOLZ METALL FASSUNG  
ANALYSESTELLE P7 MANTELSAUM MARIA  
MESSAUFBAU STATIV  
FILTER m30lo30hi30li30  
User Login Raquet



	ppm	+/-	Error
Ce	-339.000	+/-	136.130
La	1.000	+/-	62.246
Ba	1.000	+/-	66.423
Sb	1.000	+/-	34.485
<b>Sn</b>	<b>194.838</b>	+/-	17.108
Cd	9.812	+/-	8.691
<b>Ag</b>	<b>212.874</b>	+/-	12.428
Bal	843332.625	+/-	1295.090
Nb	20.575	+/-	19.311
Zr	1.000	+/-	68.499
Y	1.000	+/-	16.622
Sr	258.563	+/-	9.726
Rb	1.000	+/-	31.600
Th	1.000	+/-	974.600
Bi	1.000	+/-	1013.760
<b>Au</b>	<b>1.000</b>	+/-	29.590
As	4637.517	+/-	173.630
Se	1.000	+/-	19.555
<b>Pb</b>	<b>22671.246</b>	+/-	387.887
Hg	1.000	+/-	13.292
Zn	1.000	+/-	34.425
<b>Cu</b>	<b>66163.141</b>	+/-	952.299
Ni	1.000	+/-	34.310
Co	1.000	+/-	43.206
<b>Fe</b>	<b>642.534</b>	+/-	60.776
Mn	1.000	+/-	60.911
Cr	1.000	+/-	20.205
V	1.000	+/-	22.177
Ti	1.000	+/-	119.474
Ca	25642.607	+/-	408.241
K	3602.095	+/-	204.253
Al	1500.127	+/-	612.371
P	2433.062	+/-	122.281
Si	10086.529	+/-	406.668
Cl	2073.881	+/-	46.958
S	16518.057	+/-	257.439
Mg	1.000	+/-	6436.687

mRFA -Ergebnisse

XL3t-69288

Reading No 8  
Mode Mining  
Time 2017-07-27 11:44  
Duration 121.65  
Units ppm  
Sigma Value 2  
Sequence Final  
Flags  
INV NR Gm237  
OBJEKT TAFELGEMAELENDE  
MATERIAL HOLZ METALL FASSUNG  
ANALYSESTELLE P8 NIMBUS CHRISTI  
MESSAUFBAU STATIV  
FILTER m30lo30hi30li30  
User Login Raquet



	ppm	+/-	Error
Ce	-339.000	+/-	132.523
La	1.000	+/-	60.575
Ba	1.000	+/-	64.376
Sb	1.000	+/-	29.609
<b>Sn</b>	<b>233.494</b>	+/-	18.460
Cd	1.000	+/-	7.326
<b>Ag</b>	<b>491.263</b>	+/-	18.339
Bal	827987.625	+/-	1550.436
Nb	53.020	+/-	30.903
Zr	1.000	+/-	99.461
Y	1.000	+/-	25.206
Sr	96.632	+/-	7.715
Rb	1.000	+/-	63.758
Th	1.000	+/-	1580.217
Bi	1.000	+/-	1066.651
<b>Au</b>	<b>1.000</b>	+/-	40.463
As	9466.899	+/-	268.975
Se	1.000	+/-	15.288
<b>Pb</b>	<b>46736.547</b>	+/-	822.644
Hg	1.000	+/-	18.152
Zn	84.223	+/-	13.423
<b>Cu</b>	<b>1466.573</b>	+/-	57.300
Ni	1.000	+/-	37.290
Co	1.000	+/-	39.029
<b>Fe</b>	<b>163.701</b>	+/-	59.478
Mn	1.000	+/-	97.571
Cr	1.000	+/-	26.947
V	1.000	+/-	17.444
Ti	1.000	+/-	80.393
Ca	46986.859	+/-	849.498
K	829.805	+/-	194.756
Al	1639.933	+/-	738.345
P	7467.027	+/-	234.243
Si	11700.563	+/-	518.103
Cl	1878.166	+/-	55.024
S	29614.092	+/-	567.878
Mg	13103.599	+/-	8500.881



mRFA -Ergebnisse

XL3t-69288

Reading No 9  
Mode Mining  
Time 2017-07-27 11:48  
Duration 121.18  
Units ppm  
Sigma Value 2  
Sequence Final  
Flags  
INV NR Gm237  
OBJEKT TAFELGEMAELENDE  
MATERIAL HOLZ METALL FASSUNG  
ANALYSESTELLE P9 FLAMME  
MESSAUFBAU STATIV  
FILTER m30lo30hi30li30  
User Login Raquet



	ppm	+/-	Error
Ce	-339.000	+/-	101.744
La	1.000	+/-	46.647
Ba	1.000	+/-	49.863
Sb	1.000	+/-	20.158
<b>Sn</b>	<b>1395.446</b>	<b>+/-</b>	32.728
Cd	30.165	+/-	7.616
<b>Ag</b>	<b>236.319</b>	+/-	11.216
Bal	851405.313	+/-	1100.620
Nb	41.919	+/-	19.328
Zr	1.000	+/-	65.412
Y	1.000	+/-	15.866
Sr	46.788	+/-	5.398
Rb	1.000	+/-	36.270
Th	1.000	+/-	985.049
Bi	1.000	+/-	724.664
<b>Au</b>	<b>44.105</b>	+/-	34.117
As	6020.192	+/-	173.129
Se	1.000	+/-	12.793
<b>Pb</b>	<b>28699.830</b>	+/-	435.463
<b>Hg</b>	<b>262.341</b>	+/-	21.999
Zn	109.214	+/-	15.456
<b>Cu</b>	<b>2156.121</b>	+/-	63.412
Ni	1.000	+/-	31.839
Co	1.000	+/-	25.529
Fe	352.852	+/-	57.532
Mn	1.000	+/-	65.989
Cr	27.954	+/-	19.278
V	1.000	+/-	17.279
Ti	1.000	+/-	71.392
Ca	69626.438	+/-	996.095
K	702.036	+/-	157.051
Al	1950.953	+/-	755.447
P	6309.845	+/-	211.403
Si	8293.890	+/-	473.638
Cl	1233.479	+/-	42.878
S	21054.838	+/-	341.665
Mg	1.000	+/-	13616.121