

mRFA -Ergebnisse

XL3t-69288

Reading No 1
Mode Mining
Time 2017-07-27 11:58
Duration 120.72
Units ppm
Sigma Value 2
Sequence Final
Flags
INV NR Gm235
OBJEKT TAFELGEMAELEN
MATERIAL HOLZ METALL FASSUNG
ANALYSESTELLE P1 NIMBUS MARIA
MESSAUFBAU STATIV
FILTER m30lo30hi30li30
User Login Raquet



	ppm	+/-	Error
Ce	-339.000	+/-	182.225
La	1.000	+/-	104.712
Ba	1.000	+/-	109.204
Sb	1.000	+/-	39.645
Sn	406.382	+/-	25.129
Cd	1.000	+/-	9.848
Ag	211.476	+/-	14.463
Bal	829199.625	+/-	1593.351
Nb	1.000	+/-	27.382
Zr	1.000	+/-	83.852
Y	1.000	+/-	21.403
Sr	165.039	+/-	14.832
Rb	1.000	+/-	47.637
Th	1.000	+/-	1357.783
Bi	1.000	+/-	909.017
Au	1.000	+/-	80.045
As	8923.663	+/-	241.667
Se	1.000	+/-	20.426
Pb	29408.617	+/-	545.968
Hg	9053.560	+/-	169.797
Zn	462.676	+/-	41.354
Cu	560.868	+/-	38.738
Ni	333.408	+/-	52.814
Co	119.500	+/-	63.341
Fe	5460.621	+/-	196.835
Mn	143.865	+/-	93.873
Cr	33.427	+/-	28.029
V	1.000	+/-	44.113
Ti	1.000	+/-	178.013
Ca	49163.398	+/-	877.413
K	4233.253	+/-	249.715
Al	3358.444	+/-	839.982
P	5012.773	+/-	197.525
Si	17855.141	+/-	652.898
Cl	2694.751	+/-	69.710
S	23286.637	+/-	439.446
Mg	9912.855	+/-	8788.808

mRFA -Ergebnisse

XL3t-69288

Reading No 2
Mode Mining
Time 2017-07-27 12:03
Duration 122.06
Units ppm
Sigma Value 2
Sequence Final
Flags
INV NR Gm235
OBJEKT TAFELGEMAELEN
MATERIAL HOLZ METALL FASSUNG
ANALYSESTELLE P2 BROKAT SITZKISSEN
MESSAUFBAU STATIV
FILTER m30lo30hi30li30
User Login Raquet

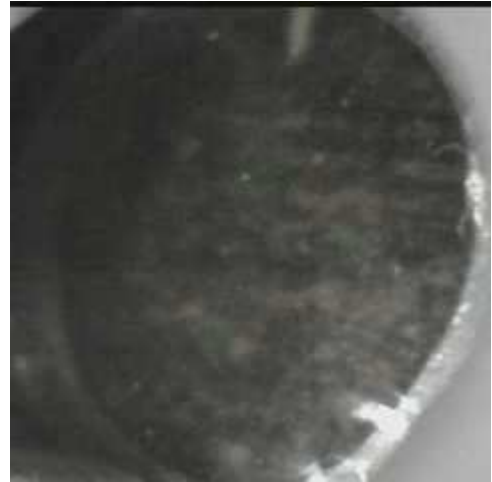


	ppm	+/-	Error
Ce	-83.756	+/-	242.241
La	133.005	+/-	110.618
Ba	118.858	+/-	116.933
Sb	1.000	+/-	38.331
Sn	16949.510	+/-	312.182
Cd	81.792	+/-	18.182
Ag	21.656	+/-	9.817
Bal	829876.313	+/-	1825.611
Nb	1.000	+/-	39.919
Zr	1.000	+/-	102.145
Y	1.000	+/-	26.362
Sr	147.740	+/-	13.549
Rb	1.000	+/-	61.735
Th	1.000	+/-	1600.139
Bi	1.000	+/-	1106.871
Au	1.000	+/-	66.120
As	5154.499	+/-	233.599
Se	1.000	+/-	18.166
Pb	37285.258	+/-	727.283
Hg	4925.284	+/-	110.710
Zn	222.992	+/-	33.991
Cu	1395.954	+/-	65.194
Ni	281.380	+/-	62.895
Co	240.057	+/-	72.656
Fe	4954.351	+/-	206.094
Mn	328.286	+/-	116.568
Cr	1.000	+/-	47.742
V	1.000	+/-	31.774
Ti	1.000	+/-	162.281
Ca	61106.152	+/-	1149.047
K	6261.647	+/-	317.311
Al	2000.409	+/-	911.129
P	1239.355	+/-	147.339
Si	11599.955	+/-	590.467
Cl	1774.083	+/-	61.880
S	13645.210	+/-	297.592
Mg	1.000	+/-	9103.729

mRFA -Ergebnisse

XL3t-69288

Reading No 3
Mode Mining
Time 2017-07-27 12:08
Duration 120.68
Units ppm
Sigma Value 2
Sequence Final
Flags
INV NR Gm235
OBJEKT TAFELGEMAELENDE
MATERIAL HOLZ METALL FASSUNG
ANALYSESTELLE P3 BROKAT MARIENKLEID
MESSAUFBAU STATIV
FILTER m30lo30hi30li30
User Login Raquet



	ppm	+/-	Error
Ce	-339.000	+/-	487.307
La	1.000	+/-	147.832
Ba	1.000	+/-	156.823
Sb	1.000	+/-	50.262
Sn	50777.410	+/-	937.632
Cd	250.876	+/-	26.514
Ag	1434.333	+/-	42.929
Bal	828700.313	+/-	2172.232
Nb	1.000	+/-	27.901
Zr	1.000	+/-	97.948
Y	1.000	+/-	24.936
Sr	162.487	+/-	10.515
Rb	1.000	+/-	66.123
Th	1.000	+/-	1571.419
Bi	1.000	+/-	1068.485
Au	984.029	+/-	63.226
As	759.124	+/-	203.943
Se	1.000	+/-	21.361
Pb	29751.332	+/-	621.099
Hg	30.161	+/-	20.621
Zn	291.692	+/-	36.527
Cu	14154.059	+/-	353.906
Ni	766.887	+/-	87.802
Co	437.407	+/-	71.834
Fe	1289.919	+/-	123.285
Mn	1.000	+/-	204.941
Cr	1.000	+/-	50.402
V	1.000	+/-	33.463
Ti	1.000	+/-	171.033
Ca	36871.906	+/-	811.635
K	8453.168	+/-	397.181
Al	1875.910	+/-	953.184
P	663.908	+/-	133.502
Si	9095.859	+/-	543.698
Cl	2925.904	+/-	86.799
S	10323.382	+/-	248.325
Mg	1.000	+/-	10275.251

mRFA -Ergebnisse

XL3t-69288

Reading No 4
Mode Mining
Time 2017-07-27 12:13
Duration 120.27
Units ppm
Sigma Value 2
Sequence Final
Flags
INV NR Gm235
OBJEKT TAFELGEMAELEN
MATERIAL HOLZ METALL FASSUNG
ANALYSESTELLE P4 MANTELSAUM MARIA
MESSAUFBAU STATIV
FILTER m30lo30hi30li30
User Login Raquet

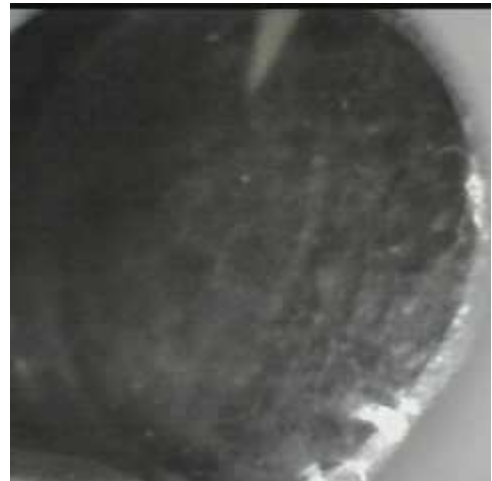


	ppm	+/-	Error
Ce	-339.000	+/-	119.125
La	1.000	+/-	54.639
Ba	1.000	+/-	58.163
Sb	1.000	+/-	22.994
Sn	139.723	+/-	14.006
Cd	1.000	+/-	8.352
Ag	179.189	+/-	10.268
Bal	849256.688	+/-	1208.027
Nb	1.000	+/-	25.279
Zr	1.000	+/-	65.062
Y	1.000	+/-	15.728
Sr	189.116	+/-	8.124
Rb	1.000	+/-	36.751
Th	1.000	+/-	926.867
Bi	1.000	+/-	823.976
Au	175.864	+/-	32.969
As	3915.241	+/-	158.914
Se	1.000	+/-	15.199
Pb	21303.494	+/-	348.009
Hg	1.000	+/-	12.761
Zn	1.000	+/-	33.953
Cu	69473.664	+/-	922.810
Ni	1.000	+/-	45.895
Co	1.000	+/-	31.862
Fe	1701.550	+/-	82.780
Mn	1.000	+/-	59.580
Cr	1.000	+/-	19.212
V	1.000	+/-	17.666
Ti	1.000	+/-	119.273
Ca	21652.893	+/-	337.273
K	2100.821	+/-	159.218
Al	805.302	+/-	554.277
P	2385.885	+/-	115.539
Si	10277.290	+/-	400.282
Cl	2493.295	+/-	50.193
S	13950.114	+/-	207.912
Mg	1.000	+/-	6481.254

mRFA -Ergebnisse

XL3t-69288

Reading No 5
Mode Mining
Time 2017-07-27 12:18
Duration 120.36
Units ppm
Sigma Value 2
Sequence Final
Flags
INV NR Gm235
OBJEKT TAFELGEMAELEN
MATERIAL HOLZ METALL FASSUNG
ANALYSESTELLE P5 NIMBUS CHRISTI
MESSAUFBAU STATIV
FILTER m30lo30hi30li30
User Login Raquet



	ppm	+/-	Error
Ce	-339.000	+/-	149.042
La	1.000	+/-	67.459
Ba	1.000	+/-	71.657
Sb	1.000	+/-	23.472
Sn	360.651	+/-	20.783
Cd	1.000	+/-	8.276
Ag	212.623	+/-	12.480
Bal	850048.750	+/-	1331.647
Nb	48.658	+/-	30.557
Zr	1.000	+/-	98.362
Y	1.000	+/-	24.765
Sr	138.538	+/-	8.470
Rb	1.000	+/-	62.744
Th	1.000	+/-	1607.741
Bi	1.000	+/-	1050.344
Au	1.000	+/-	36.310
As	9611.659	+/-	267.286
Se	1.000	+/-	14.885
Pb	46811.949	+/-	820.666
Hg	1.000	+/-	17.831
Zn	122.242	+/-	13.451
Cu	125.667	+/-	22.056
Ni	1.000	+/-	52.123
Co	1.000	+/-	41.307
Fe	2584.133	+/-	125.607
Mn	110.943	+/-	80.328
Cr	1.000	+/-	21.518
V	1.000	+/-	23.674
Ti	1.000	+/-	94.998
Ca	39589.086	+/-	732.601
K	1285.125	+/-	167.499
Al	2929.457	+/-	707.065
P	4134.024	+/-	177.352
Si	15638.384	+/-	586.758
Cl	1737.553	+/-	51.612
S	24510.518	+/-	482.617
Mg	1.000	+/-	7020.790

mRFA -Ergebnisse

XL3t-69288

Reading No 6
Mode Mining
Time 2017-07-27 12:23
Duration 121.77
Units ppm
Sigma Value 2
Sequence Final
Flags
INV NR Gm235
OBJEKT TAFELGEMAELEN
MATERIAL HOLZ METALL FASSUNG
ANALYSESTELLE P6 BROKAT SCHERGE
MESSAUFBAU STATIV
FILTER m30lo30hi30li30
User Login Raquet



	ppm	+/-	Error
Ce	-339.000	+/-	160.520
La	1.000	+/-	72.628
Ba	1.000	+/-	77.474
Sb	1.000	+/-	25.680
Sn	18454.094	+/-	257.501
Cd	169.350	+/-	15.079
Ag	240.612	+/-	12.861
Bal	895568.875	+/-	918.786
Nb	1.000	+/-	22.938
Zr	1.000	+/-	58.450
Y	1.000	+/-	14.327
Sr	87.069	+/-	5.816
Rb	1.000	+/-	31.316
Th	1.000	+/-	832.312
Bi	1.000	+/-	685.929
Au	390.975	+/-	32.759
As	737.298	+/-	128.563
Se	1.000	+/-	13.694
Pb	19385.781	+/-	313.864
Hg	1.000	+/-	11.009
Zn	57.674	+/-	14.004
Cu	378.706	+/-	31.218
Ni	1.000	+/-	41.631
Co	1.000	+/-	30.491
Fe	192.136	+/-	62.158
Mn	1.000	+/-	82.930
Cr	58.506	+/-	19.618
V	1.000	+/-	15.935
Ti	1.000	+/-	77.053
Ca	39568.148	+/-	776.740
K	1.000	+/-	502.799
Al	1590.076	+/-	852.531
P	4624.858	+/-	205.161
Si	7981.721	+/-	536.232
Cl	387.356	+/-	44.266
S	10126.765	+/-	210.283
Mg	1.000	+/-	9688.906