

## Certificate of Verification

XL3t-69288

Reading No 1  
Mode Mining  
Time 2015-11-12 17:31  
Duration 121.17  
Units ppm  
Sigma Value 2  
Sequence Final  
Flags  
INV NR Gm156a  
OBJEKT TAFELGEMAELEN  
MATERIAL HOLZ METALL FASSUNG  
ANALYSESTELLE P1 GOLDGRUND  
MESSAUFBAU STATIV ANLIEGEND  
FILTER m30lo30hi30li30  
User Login Raquet



	ppm	+/-	Error
Ce	-339.000	+/-	102.147
La	1.000	+/-	46.678
Ba	1.000	+/-	62.430
Sb	19.960	+/-	17.732
Sn	10.421	+/-	9.230
Cd	1.000	+/-	5.865
Ag	14.131	+/-	4.786
Bal	808548.750	+/-	1069.903
Nb	1.000	+/-	2.875
Zr	1.000	+/-	11.339
Y	1.000	+/-	2.335
Sr	501.476	+/-	8.842
Rb	43.589	+/-	8.010
Th	1.000	+/-	165.529
Bi	1.000	+/-	167.095
Au	7185.903	+/-	93.389
As	137.974	+/-	20.239
Se	1.000	+/-	10.265
Pb	594.961	+/-	17.954
Hg	84.802	+/-	9.336
Zn	268.900	+/-	21.994
Cu	159.335	+/-	18.094
Ni	1.000	+/-	28.789
Co	1.000	+/-	59.434
Fe	14197.609	+/-	214.246
Mn	91.947	+/-	71.206
Cr	139.715	+/-	25.620
V	50.023	+/-	26.653
Ti	1071.428	+/-	152.988
Ca	97462.531	+/-	735.651
K	3563.920	+/-	178.572
Al	4340.103	+/-	1025.112
P	39081.746	+/-	449.901
Si	6166.546	+/-	587.589
Cl	777.559	+/-	42.086
S	15486.662	+/-	173.384
Mg	1.000	+/-	9821.203

Supervised By: \_\_\_\_\_

## Certificate of Verification

XL3t-69288

Reading No 2  
Mode Mining  
Time 2015-11-12 17:38  
Duration 121.55  
Units ppm  
Sigma Value 2  
Sequence Final  
Flags  
INV NR Gm156a  
OBJEKT TAFELGEMAELENDE  
MATERIAL HOLZ METALL FASSUNG  
ANALYSESTELLE P2 GOLDKUGEL  
MESSAUFBAU STATIV ANLIEGEND  
FILTER m30lo30hi30li30  
User Login Raquet



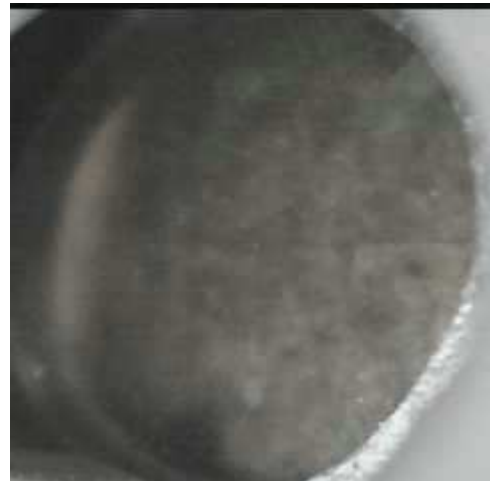
	ppm	+/-	Error
Ce	-339.000	+/-	106.156
La	1.000	+/-	48.557
Ba	1.000	+/-	52.036
Sb	1.000	+/-	17.285
Sn	80.481	+/-	13.767
Cd	6.958	+/-	6.903
Ag	782.606	+/-	19.341
Bal	900340.188	+/-	678.301
Nb	21.552	+/-	11.268
Zr	1.000	+/-	42.517
Y	1.000	+/-	9.652
Sr	341.895	+/-	8.481
Rb	1.000	+/-	23.793
Th	1.000	+/-	573.580
Bi	1.000	+/-	595.105
Au	751.584	+/-	35.166
As	4184.546	+/-	114.364
Se	13.686	+/-	10.622
Pb	15150.093	+/-	209.775
Hg	1.000	+/-	9.005
Zn	128.870	+/-	13.388
Cu	1016.391	+/-	37.956
Ni	1.000	+/-	29.584
Co	1.000	+/-	31.663
Fe	2121.438	+/-	93.501
Mn	1.000	+/-	65.560
Cr	50.983	+/-	19.627
V	1.000	+/-	21.356
Ti	1.000	+/-	105.160
Ca	35140.707	+/-	505.550
K	2599.251	+/-	200.400
Al	2932.749	+/-	625.131
P	8205.187	+/-	202.007
Si	6674.116	+/-	384.321
Cl	3509.315	+/-	67.649
S	15947.407	+/-	242.958
Mg	1.000	+/-	6110.583

Supervised By: \_\_\_\_\_

## Certificate of Verification

XL3t-69288

Reading No 3  
Mode Mining  
Time 2015-11-12 17:42  
Duration 121.47  
Units ppm  
Sigma Value 2  
Sequence Final  
Flags  
INV NR Gm156a  
OBJEKT TAFELGEMAELEN  
MATERIAL HOLZ METALL FASSUNG  
ANALYSESTELLE P3 GEWAND NIKOLAUS  
MESSAUFBAU STATIV ANLIEGEND  
FILTER m30lo30hi30li30  
User Login Raquet



	ppm	+/-	Error
Ce	-339.000	+/-	121.533
La	1.000	+/-	55.744
Ba	1.000	+/-	59.308
Sb	1.000	+/-	19.621
Sn	228.631	+/-	17.398
Cd	10.439	+/-	7.951
Ag	580.084	+/-	18.258
Bal	879960.938	+/-	849.366
Nb	31.163	+/-	12.633
Zr	1.000	+/-	61.749
Y	1.000	+/-	10.988
Sr	504.524	+/-	11.462
Rb	1.000	+/-	23.663
Th	1.000	+/-	640.307
Bi	1.000	+/-	784.227
Au	343.036	+/-	30.494
As	4711.102	+/-	131.305
Se	18.878	+/-	13.484
Pb	16701.072	+/-	251.159
Hg	1.000	+/-	9.900
Zn	158.643	+/-	14.551
Cu	813.627	+/-	36.592
Ni	1.000	+/-	32.323
Co	1.000	+/-	35.046
Fe	2152.258	+/-	100.723
Mn	1.000	+/-	108.923
Cr	35.124	+/-	23.694
V	1.000	+/-	19.406
Ti	1.000	+/-	117.513
Ca	58550.836	+/-	846.949
K	3474.477	+/-	211.726
Al	3445.325	+/-	722.628
P	3757.715	+/-	155.328
Si	6368.047	+/-	392.114
Cl	3304.229	+/-	69.506
S	14849.871	+/-	244.486
Mg	1.000	+/-	6786.971

Supervised By: \_\_\_\_\_

## Certificate of Verification

XL3t-69288

Reading No 4  
Mode Mining  
Time 2015-11-12 17:45  
Duration 122.13  
Units ppm  
Sigma Value 2  
Sequence Final  
Flags  
INV NR Gm156a  
OBJEKT TAFELGEMAELENDE  
MATERIAL HOLZ METALL FASSUNG  
ANALYSESTELLE P4 BUCH BESCHLAG  
MESSAUFBAU STATIV ANLIEGEND  
FILTER m30lo30hi30li30  
User Login Raquet



	ppm	+/-	Error
Ce	-339.000	+/-	113.390
La	1.000	+/-	52.211
Ba	1.000	+/-	55.591
Sb	1.000	+/-	23.120
Sn	57.756	+/-	12.796
Cd	1.000	+/-	6.987
Ag	451.914	+/-	14.763
Bal	851866.750	+/-	997.623
Nb	15.302	+/-	10.600
Zr	1.000	+/-	39.494
Y	1.000	+/-	9.178
Sr	440.397	+/-	10.112
Rb	1.000	+/-	24.175
Th	1.000	+/-	554.278
Bi	1.000	+/-	565.220
Au	538.879	+/-	32.344
As	3367.514	+/-	105.861
Se	1.000	+/-	16.486
Pb	12197.052	+/-	171.739
Hg	1.000	+/-	9.093
Zn	143.549	+/-	23.462
Cu	24618.813	+/-	343.288
Ni	1.000	+/-	30.357
Co	1.000	+/-	31.186
Fe	1682.700	+/-	81.863
Mn	1.000	+/-	84.390
Cr	1.000	+/-	30.122
V	1.000	+/-	16.740
Ti	1.000	+/-	131.203
Ca	68503.625	+/-	775.773
K	3187.854	+/-	183.001
Al	2817.729	+/-	699.928
P	4435.476	+/-	154.581
Si	8163.305	+/-	409.392
Cl	3147.323	+/-	58.302
S	14364.069	+/-	194.692
Mg	1.000	+/-	6498.792

Supervised By: \_\_\_\_\_

## Certificate of Verification

XL3t-69288

Reading No 5  
Mode Mining  
Time 2015-11-12 17:47  
Duration 30.55  
Units ppm  
Sigma Value 2  
Sequence Final  
Flags  
INV NR Gm156a  
OBJEKT TAFELGEMAELEN  
MATERIAL HOLZ METALL FASSUNG  
ANALYSESTELLE P4 BUCH BESCHLAG  
MESSAUFBAU STATIV ANLIEGEND  
FILTER m30lo30hi30li30  
User Login Raquet



	ppm	+/-	Error
Sb	1.000	+/-	22.886
Sn	17.792	+/-	15.324
Cd	1.000	+/-	12.438
Ag	391.764	+/-	279.832
Bal	959322.125	+/-	280.420
Nb	15.885	+/-	10.304
Zr	1.000	+/-	43.663
Y	1.000	+/-	8.731
Sr	437.407	+/-	10.036
Rb	1.000	+/-	17.195
Th	1.000	+/-	530.415
Bi	1.000	+/-	598.647
Au	575.357	+/-	32.251
As	3326.115	+/-	103.088
Se	1.000	+/-	15.564
Pb	11794.873	+/-	165.818
Hg	1.000	+/-	8.682
Zn	157.634	+/-	22.050
Cu	21848.109	+/-	308.520
Ni	1.000	+/-	28.281
Co	1.000	+/-	28.072
Fe	1646.856	+/-	78.918
Mn	1.000	+/-	88.950
Cr	1.000	+/-	411.262
V	466.098	+/-	428.457
Ti	1.000	+/-	1871.826

Supervised By: \_\_\_\_\_

## Certificate of Verification

XL3t-69288

Reading No 6  
Mode Mining  
Time 2015-11-12 17:50  
Duration 121.32  
Units ppm  
Sigma Value 2  
Sequence Final  
Flags  
INV NR Gm156a  
OBJEKT TAFELGEMAELENDE  
MATERIAL HOLZ METALL FASSUNG  
ANALYSESTELLE P5 GEWAND ERASMUS  
MESSAUFBAU STATIV ANLIEGEND  
FILTER m30lo30hi30li30  
User Login Raquet



	ppm	+/-	Error
Ce	-339.000	+/-	136.548
La	1.000	+/-	62.503
Ba	1.000	+/-	66.868
Sb	1.000	+/-	22.033
Sn	120.619	+/-	17.902
Cd	1.000	+/-	10.583
Ag	813.063	+/-	23.615
Bal	870927.688	+/-	916.203
Nb	27.539	+/-	12.706
Zr	1.000	+/-	54.636
Y	1.000	+/-	10.965
Sr	573.369	+/-	12.510
Rb	1.000	+/-	26.775
Th	1.000	+/-	645.391
Bi	1.000	+/-	713.977
Au	914.415	+/-	41.236
As	4857.648	+/-	131.175
Se	16.102	+/-	11.805
Pb	16153.414	+/-	238.595
Hg	1.000	+/-	10.175
Zn	179.429	+/-	16.113
Cu	933.676	+/-	39.353
Ni	1.000	+/-	33.966
Co	1.000	+/-	43.270
Fe	4429.117	+/-	144.673
Mn	1.000	+/-	124.134
Cr	40.168	+/-	25.627
V	1.000	+/-	20.142
Ti	1.000	+/-	142.103
Ca	60349.418	+/-	843.850
K	2379.963	+/-	228.524
Al	4087.253	+/-	845.471
P	7566.202	+/-	217.242
Si	6668.458	+/-	443.811
Cl	2823.666	+/-	66.071
S	16138.839	+/-	258.590
Mg	1.000	+/-	8651.281

Supervised By: \_\_\_\_\_

## Certificate of Verification

XL3t-69288

Reading No 7  
Mode Mining  
Time 2015-11-12 17:54  
Duration 120.33  
Units ppm  
Sigma Value 2  
Sequence Final  
Flags  
INV NR Gm156a  
OBJEKT TAFELGEMAELEN  
MATERIAL HOLZ METALL FASSUNG  
ANALYSESTELLE P6 GEORG NIMBUS  
MESSAUFBAU STATIV ANLIEGEND  
FILTER m30lo30hi30li30  
User Login Raquet



	ppm	+/-	Error
Ce	-339.000	+/-	99.210
La	1.000	+/-	45.506
Ba	1.000	+/-	51.056
Sb	1.000	+/-	27.842
Sn	1.000	+/-	11.487
Cd	1.000	+/-	8.611
Ag	12.345	+/-	4.647
Bal	789681.750	+/-	1143.018
Nb	1.000	+/-	2.687
Zr	1.000	+/-	12.590
Y	1.000	+/-	2.195
Sr	513.785	+/-	8.762
Rb	32.138	+/-	6.920
Th	1.000	+/-	153.621
Bi	1.000	+/-	147.792
Au	4976.373	+/-	73.198
As	144.954	+/-	19.997
Se	1.000	+/-	8.425
Pb	606.819	+/-	17.608
Hg	169.682	+/-	9.729
Zn	228.344	+/-	19.474
Cu	344.331	+/-	22.187
Ni	1.000	+/-	28.329
Co	1.000	+/-	69.714
Fe	21420.330	+/-	265.361
Mn	135.071	+/-	70.293
Cr	156.858	+/-	28.910
V	58.888	+/-	32.240
Ti	1993.281	+/-	192.058
Ca	98254.211	+/-	726.665
K	4851.197	+/-	207.667
Al	7692.618	+/-	1171.721
P	37295.031	+/-	440.683
Si	14755.460	+/-	714.619
Cl	1713.574	+/-	50.311
S	14962.870	+/-	169.667
Mg	1.000	+/-	10476.358

Supervised By: \_\_\_\_\_

## Certificate of Verification

XL3t-69288

Reading No 8  
Mode Mining  
Time 2015-11-12 17:59  
Duration 121.45  
Units ppm  
Sigma Value 2  
Sequence Final  
Flags  
INV NR Gm156a  
OBJEKT TAFELGEMAELEN  
MATERIAL HOLZ METALL FASSUNG  
ANALYSESTELLE P7 GEORG RUESTUNG  
MESSAUFBAU STATIV ANLIEGEND  
FILTER m30lo30hi30li30  
User Login Raquet



	ppm	+/-	Error
Ce	-339.000	+/-	73.952
La	1.000	+/-	33.920
Ba	1.000	+/-	36.414
Sb	1.000	+/-	12.340
Sn	81.165	+/-	10.177
Cd	21.755	+/-	5.466
Ag	524.840	+/-	13.226
Bal	916148.000	+/-	518.004
Nb	24.692	+/-	9.270
Zr	1.000	+/-	36.102
Y	1.000	+/-	7.754
Sr	168.153	+/-	5.114
Rb	1.000	+/-	14.715
Th	1.000	+/-	476.337
Bi	1.000	+/-	513.510
Au	1.000	+/-	12.204
As	3629.488	+/-	94.217
Se	12.509	+/-	8.630
Pb	12818.583	+/-	162.288
Hg	1.000	+/-	6.933
Zn	65.899	+/-	8.565
Cu	748.029	+/-	29.313
Ni	1.000	+/-	24.529
Co	1.000	+/-	26.279
Fe	1679.844	+/-	75.684
Mn	1.000	+/-	50.525
Cr	29.636	+/-	16.625
V	1.000	+/-	12.848
Ti	1.000	+/-	77.164
Ca	28159.061	+/-	394.588
K	1303.404	+/-	167.969
Al	3227.030	+/-	547.796
P	1797.140	+/-	111.964
Si	8409.177	+/-	361.993
Cl	3529.674	+/-	62.554
S	17621.855	+/-	248.623
Mg	1.000	+/-	5779.502

Supervised By: \_\_\_\_\_