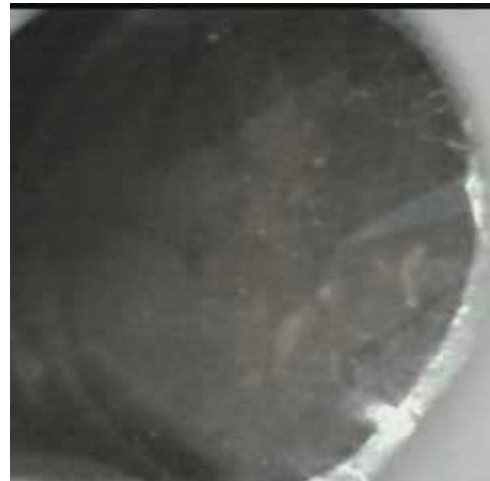


Certificate of Verification

XL3t-69288

Reading No 1
Mode Mining
Time 2017-02-14 12:19
Duration 121.10
Units ppm
Sigma Value 2
Sequence Final
Flags
INV NR Gm148
OBJEKT TAFELGEMAELEN
MATERIAL HOLZ METALL FASSUNG
ANALYSESTELLE P1 RAHMENSEITE IS
MESSAUFBAU STATIV
FILTER m30lo30hi30li30
User Login Raquet



	ppm	+/-	Error
Ce	-339.000	+/-	80.785
La	1.000	+/-	37.183
Ba	1.000	+/-	40.015
Sb	1.000	+/-	21.548
Sn	1.000	+/-	10.763
Cd	29.826	+/-	6.038
Ag	6.561	+/-	3.721
Bal	755594.125	+/-	1161.059
Nb	1.000	+/-	1.779
Zr	1.000	+/-	6.888
Y	1.000	+/-	1.350
Sr	319.055	+/-	6.071
Rb	7.856	+/-	3.954
Th	1.000	+/-	101.960
Bi	1.000	+/-	87.517
Au	1254.062	+/-	32.666
As	124.709	+/-	14.174
Se	12.811	+/-	9.151
Pb	317.813	+/-	11.718
Hg	529.994	+/-	12.360
Zn	232.811	+/-	15.293
Cu	56.604	+/-	13.001
Ni	1.000	+/-	24.287
Co	1.000	+/-	60.016
Fe	19196.834	+/-	225.453
Mn	139.285	+/-	62.088
Cr	133.847	+/-	24.947
V	60.613	+/-	32.040
Ti	1022.438	+/-	178.876
Ca	147284.672	+/-	866.212
K	3633.231	+/-	187.481
Al	8964.390	+/-	1070.206
P	9144.462	+/-	208.704
Si	43512.473	+/-	881.231
Cl	2034.142	+/-	43.766
S	6387.374	+/-	93.728
Mg	1.000	+/-	7326.456

Supervised By: _____

Certificate of Verification

XL3t-69288

Reading No 2
Mode Mining
Time 2017-02-14 12:23
Duration 121.03
Units ppm
Sigma Value 2
Sequence Final
Flags
INV NR Gm148
OBJEKT TAFELGEMAELEN
MATERIAL HOLZ METALL FASSUNG
ANALYSESTELLE P2 KLEID SAUM IS
MESSAUFBAU STATIV
FILTER m30lo30hi30li30
User Login Raquet



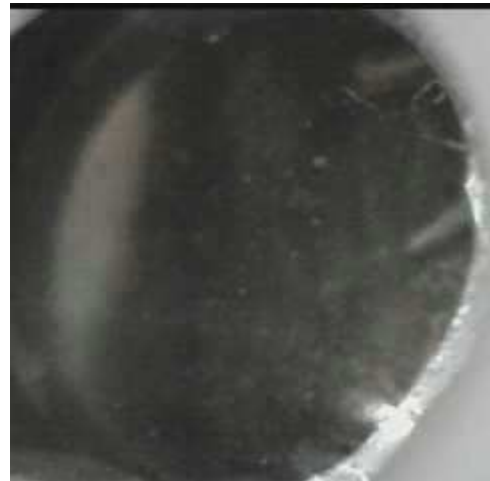
	ppm	+/-	Error
Ce	-339.000	+/-	89.292
La	1.000	+/-	40.972
Ba	1.000	+/-	44.168
Sb	1.000	+/-	23.566
Sn	71.713	+/-	11.346
Cd	14.577	+/-	6.327
Ag	343.665	+/-	12.669
Bal	890124.563	+/-	663.757
Nb	18.515	+/-	8.853
Zr	1.000	+/-	31.564
Y	1.000	+/-	7.546
Sr	162.380	+/-	5.375
Rb	1.000	+/-	17.514
Th	1.000	+/-	460.504
Bi	1.000	+/-	441.361
Au	403.801	+/-	27.621
As	2782.282	+/-	86.026
Se	1.000	+/-	10.278
Pb	11267.106	+/-	141.322
Hg	361.077	+/-	15.182
Zn	87.507	+/-	12.567
Cu	1443.900	+/-	41.870
Ni	1.000	+/-	24.761
Co	1.000	+/-	29.122
Fe	2512.241	+/-	92.489
Mn	1.000	+/-	52.686
Cr	23.025	+/-	18.774
V	1.000	+/-	20.086
Ti	1.000	+/-	102.028
Ca	59731.594	+/-	683.939
K	2414.007	+/-	162.072
Al	576.307	+/-	541.015
P	3633.519	+/-	139.539
Si	6484.575	+/-	360.656
Cl	2943.835	+/-	54.752
S	14599.760	+/-	193.582
Mg	1.000	+/-	10525.853

Supervised By: _____

Certificate of Verification

XL3t-69288

Reading No 3
Mode Mining
Time 2017-02-14 12:29
Duration 120.54
Units ppm
Sigma Value 2
Sequence Final
Flags
INV NR Gm148
OBJEKT TAFELGEMAELEN
MATERIAL HOLZ METALL FASSUNG
ANALYSESTELLE P3 KLEID FRAU AS
MESSAUFBAU STATIV
FILTER m30lo30hi30li30
User Login Raquet



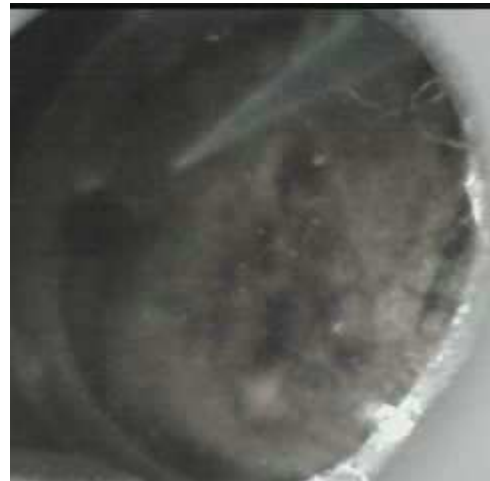
	ppm	+/-	Error
Ce	-339.000	+/-	109.141
La	1.000	+/-	50.177
Ba	1.000	+/-	53.562
Sb	1.000	+/-	25.167
Sn	27.469	+/-	14.284
Cd	1.000	+/-	10.078
Ag	935.649	+/-	22.910
Bal	904000.000	+/-	653.505
Nb	11.073	+/-	8.113
Zr	1.000	+/-	36.524
Y	1.000	+/-	6.963
Sr	347.849	+/-	8.637
Rb	1.000	+/-	17.971
Th	1.000	+/-	426.516
Bi	1.000	+/-	467.532
Au	853.629	+/-	38.756
As	1952.188	+/-	78.175
Se	1.000	+/-	9.711
Pb	7548.879	+/-	106.541
Hg	664.128	+/-	20.147
Zn	1.000	+/-	37.517
Cu	29664.709	+/-	365.704
Ni	1.000	+/-	30.020
Co	1.000	+/-	36.062
Fe	3632.888	+/-	110.087
Mn	1.000	+/-	74.901
Cr	1.000	+/-	31.110
V	1.000	+/-	17.038
Ti	1.000	+/-	144.536
Ca	33318.328	+/-	413.818
K	3602.359	+/-	197.527
Al	1.000	+/-	567.922
P	1472.002	+/-	91.038
Si	4054.601	+/-	285.119
Cl	3059.841	+/-	53.730
S	4854.414	+/-	81.788
Mg	1.000	+/-	5805.272

Supervised By: _____

Certificate of Verification

XL3t-69288

Reading No 4
Mode Mining
Time 2017-02-14 12:33
Duration 122.20
Units ppm
Sigma Value 2
Sequence Final
Flags
INV NR Gm148
OBJEKT TAFELGEMAELEN
MATERIAL HOLZ METALL FASSUNG
ANALYSESTELLE P4 KLEID URSULA AS
MESSAUFBAU STATIV
FILTER m30lo30hi30li30
User Login Raquet



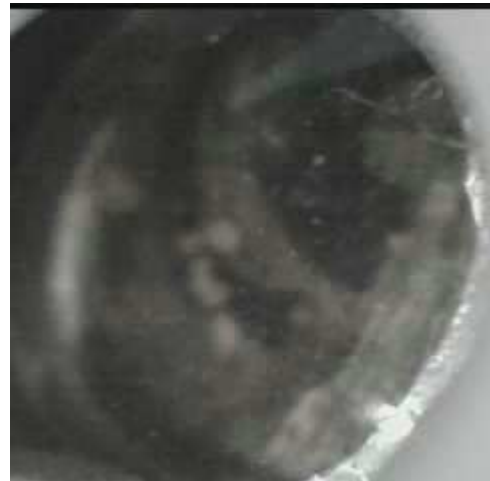
	ppm	+/-	Error
Ce	-339.000	+/-	91.446
La	1.000	+/-	42.134
Ba	1.000	+/-	45.316
Sb	1.000	+/-	15.464
Sn	30.707	+/-	10.274
Cd	7.591	+/-	6.254
Ag	298.364	+/-	11.320
Bal	803029.875	+/-	1061.161
Nb	1.000	+/-	9.139
Zr	1.000	+/-	21.625
Y	1.000	+/-	4.920
Sr	380.836	+/-	7.476
Rb	1.000	+/-	13.479
Th	1.000	+/-	319.857
Bi	1.000	+/-	319.730
Au	445.026	+/-	25.350
As	1810.822	+/-	58.938
Se	1.000	+/-	8.734
Pb	5535.043	+/-	69.050
Hg	406.095	+/-	13.665
Zn	96.145	+/-	12.426
Cu	1164.759	+/-	35.614
Ni	1.000	+/-	25.415
Co	1.000	+/-	31.013
Fe	3308.919	+/-	100.673
Mn	1.000	+/-	61.572
Cr	33.537	+/-	21.943
V	1.000	+/-	29.304
Ti	109.655	+/-	100.397
Ca	124710.578	+/-	1030.575
K	3880.435	+/-	194.296
Al	2487.913	+/-	867.459
P	5931.255	+/-	194.999
Si	11966.648	+/-	534.808
Cl	4196.778	+/-	67.485
S	19064.506	+/-	208.000
Mg	11104.493	+/-	9543.646

Supervised By: _____

Certificate of Verification

XL3t-69288

Reading No 5
Mode Mining
Time 2017-02-14 12:37
Duration 121.45
Units ppm
Sigma Value 2
Sequence Final
Flags
INV NR Gm148
OBJEKT TAFELGEMAELEN
MATERIAL HOLZ METALL FASSUNG
ANALYSESTELLE P5 AERMEL MANN AS
MESSAUFBAU STATIV
FILTER m30lo30hi30li30
User Login Raquet



	ppm	+/-	Error
Ce	-339.000	+/-	93.580
La	1.000	+/-	43.095
Ba	1.000	+/-	46.100
Sb	1.000	+/-	19.361
Sn	29.122	+/-	10.450
Cd	10.914	+/-	6.388
Ag	316.838	+/-	11.928
Bal	822005.000	+/-	1018.167
Nb	15.932	+/-	8.936
Zr	1.000	+/-	32.348
Y	1.000	+/-	7.501
Sr	322.162	+/-	7.516
Rb	1.000	+/-	14.685
Th	1.000	+/-	472.263
Bi	1.000	+/-	477.567
Au	212.840	+/-	24.237
As	3047.089	+/-	89.053
Se	12.228	+/-	9.175
Pb	11104.675	+/-	139.588
Hg	186.091	+/-	13.467
Zn	110.960	+/-	12.900
Cu	1510.150	+/-	43.645
Ni	1.000	+/-	26.597
Co	1.000	+/-	30.359
Fe	2315.162	+/-	90.819
Mn	1.000	+/-	58.908
Cr	1.000	+/-	35.548
V	1.000	+/-	16.735
Ti	1.000	+/-	87.304
Ca	125922.727	+/-	1221.423
K	2367.907	+/-	182.309
Al	1212.774	+/-	768.638
P	3280.837	+/-	159.290
Si	7754.109	+/-	444.987
Cl	3346.281	+/-	62.194
S	14916.138	+/-	192.310
Mg	1.000	+/-	8794.988

Supervised By: _____

Certificate of Verification

XL3t-69288

Reading No 6
Mode Mining
Time 2017-02-14 12:41
Duration 121.16
Units ppm
Sigma Value 2
Sequence Final
Flags
INV NR Gm148
OBJEKT TAFELGEMAELEN
MATERIAL HOLZ METALL FASSUNG
ANALYSESTELLE P6 SCHWERT AS
MESSAUFBAU STATIV
FILTER m30lo30hi30li30
User Login Raquet



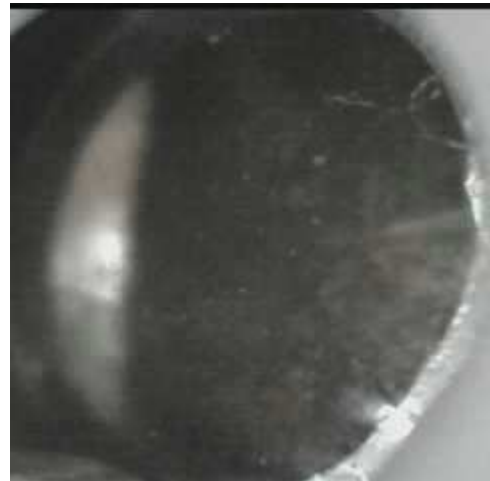
	ppm	+/-	Error
Ce	-339.000	+/-	120.888
La	1.000	+/-	55.822
Ba	1.000	+/-	58.841
Sb	1.000	+/-	26.063
Sn	65.643	+/-	14.861
Cd	1.000	+/-	9.056
Ag	687.616	+/-	20.219
Bal	886506.250	+/-	842.134
Nb	20.758	+/-	14.089
Zr	1.000	+/-	49.375
Y	1.000	+/-	12.152
Sr	306.025	+/-	10.296
Rb	1.000	+/-	23.035
Th	1.000	+/-	704.941
Bi	1.000	+/-	728.166
Au	1.000	+/-	38.170
As	5415.917	+/-	142.292
Se	20.228	+/-	14.449
Pb	17912.854	+/-	270.586
Hg	2868.057	+/-	54.222
Zn	244.451	+/-	23.460
Cu	2034.428	+/-	60.342
Ni	1.000	+/-	32.612
Co	1.000	+/-	42.572
Fe	4238.001	+/-	142.295
Mn	1.000	+/-	82.916
Cr	1.000	+/-	35.309
V	1.000	+/-	22.476
Ti	1.000	+/-	107.308
Ca	29698.947	+/-	477.698
K	3408.730	+/-	220.946
Al	2020.130	+/-	668.476
P	3025.742	+/-	158.432
Si	10416.294	+/-	466.305
Cl	4884.899	+/-	92.826
S	26225.061	+/-	410.541
Mg	1.000	+/-	6782.514

Supervised By: _____

Certificate of Verification

XL3t-69288

Reading No 7
Mode Mining
Time 2017-02-14 12:45
Duration 121.23
Units ppm
Sigma Value 2
Sequence Final
Flags
INV NR Gm148
OBJEKT TAFELGEMAELEN
MATERIAL HOLZ METALL FASSUNG
ANALYSESTELLE P7 FAHNE AS
MESSAUFBAU STATIV
FILTER m30lo30hi30li30
User Login Raquet



	ppm	+/-	Error
Ce	-339.000	+/-	118.689
La	1.000	+/-	54.838
Ba	1.000	+/-	58.339
Sb	1.000	+/-	28.667
Sn	101.263	+/-	13.521
Cd	8.120	+/-	7.862
Ag	112.544	+/-	9.124
Bal	844027.813	+/-	971.278
Nb	11.748	+/-	8.984
Zr	1.000	+/-	32.406
Y	1.000	+/-	7.623
Sr	395.143	+/-	9.146
Rb	1.000	+/-	14.936
Th	1.000	+/-	472.444
Bi	1.000	+/-	470.109
Au	107.106	+/-	28.221
As	3247.387	+/-	91.507
Se	1.000	+/-	14.009
Pb	9856.328	+/-	132.420
Hg	976.281	+/-	24.188
Zn	141.655	+/-	16.643
Cu	2396.087	+/-	59.819
Ni	1.000	+/-	30.179
Co	1.000	+/-	45.290
Fe	6472.821	+/-	161.366
Mn	1.000	+/-	65.782
Cr	27.852	+/-	23.469
V	1.000	+/-	20.413
Ti	118.844	+/-	98.614
Ca	74136.711	+/-	835.526
K	1761.129	+/-	164.669
Al	2039.971	+/-	821.302
P	6697.698	+/-	217.304
Si	17786.148	+/-	640.355
Cl	2706.898	+/-	60.251
S	26870.424	+/-	335.172
Mg	1.000	+/-	13516.300

Supervised By: _____