

mRFA -Ergebnisse

XL3t-69288

Reading No 1
Mode Mining
Time 2017-05-30 14:13
Duration 121.54
Units ppm
Sigma Value 2
Sequence Final
Flags
INV NR Gm144
OBJEKT TAFELGEMAELEN
MATERIAL HOLZ METALL FASSUNG
ANALYSESTELLE P21 ARMBRUSTSCHUETZE
MESSAUFBAU STATIV
FILTER m30lo30hi30li30
User Login Raquet

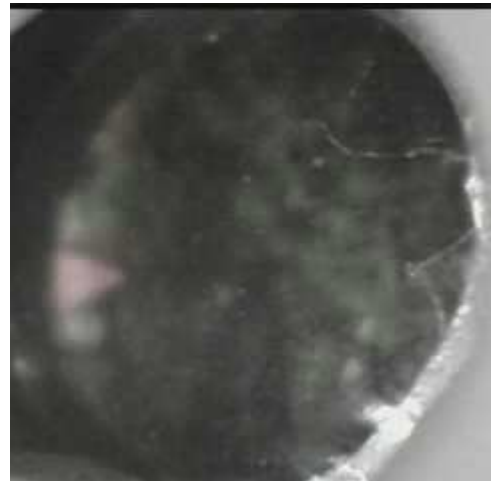


	ppm	+/-	Error
Ce	-339.000	+/-	152.958
La	1.000	+/-	69.962
Ba	1.000	+/-	74.459
Sb	1.000	+/-	23.351
Sn	15460.895	+/-	222.889
Cd	116.292	+/-	13.674
Ag	850.809	+/-	23.796
Bal	855029.813	+/-	1275.500
Nb	18.483	+/-	16.297
Zr	1.000	+/-	64.797
Y	1.000	+/-	14.497
Sr	151.490	+/-	7.352
Rb	1.000	+/-	26.236
Th	1.000	+/-	825.350
Bi	1.000	+/-	841.688
Au	1.000	+/-	22.494
As	911.872	+/-	132.523
Se	1.000	+/-	13.877
Pb	18664.506	+/-	310.652
Hg	24.320	+/-	13.689
Zn	1.000	+/-	36.267
Cu	31599.533	+/-	531.611
Ni	1.000	+/-	42.518
Co	1.000	+/-	31.201
Fe	533.133	+/-	67.148
Mn	1.000	+/-	74.816
Cr	1.000	+/-	21.208
V	1.000	+/-	17.177
Ti	1.000	+/-	93.156
Ca	34931.160	+/-	589.446
K	3576.057	+/-	266.873
Al	2044.034	+/-	749.099
P	562.696	+/-	105.160
Si	12755.623	+/-	527.947
Cl	4045.607	+/-	83.184
S	7771.248	+/-	149.687
Mg	10952.449	+/-	8405.400

mRFA -Ergebnisse

XL3t-69288

Reading No 2
Mode Mining
Time 2017-05-30 14:18
Duration 121.36
Units ppm
Sigma Value 2
Sequence Final
Flags
INV NR Gm144
OBJEKT TAFELGEMAELENDE
MATERIAL HOLZ METALL FASSUNG
ANALYSESTELLE P22 ARMBRUSTSCHUETZE
MESSAUFBAU STATIV
FILTER m30lo30hi30li30
User Login Raquet



	ppm	+/-	Error
Ce	-339.000	+/-	383.085
La	1.000	+/-	169.577
Ba	1.000	+/-	142.646
Sb	1.000	+/-	42.835
Sn	26739.320	+/-	531.455
Cd	156.828	+/-	22.108
Ag	973.672	+/-	35.512
Bal	816221.063	+/-	2324.184
Nb	48.558	+/-	36.479
Zr	1.000	+/-	122.226
Y	1.000	+/-	31.705
Sr	100.371	+/-	10.160
Rb	1.000	+/-	59.279
Th	1.000	+/-	1685.684
Bi	1.000	+/-	1513.488
Au	1.000	+/-	41.392
As	5035.166	+/-	280.448
Se	1.000	+/-	22.509
Pb	45717.285	+/-	934.939
Hg	1.000	+/-	25.335
Zn	1.000	+/-	66.399
Cu	57974.488	+/-	1054.453
Ni	107.900	+/-	58.687
Co	1.000	+/-	48.769
Fe	252.372	+/-	72.216
Mn	1.000	+/-	114.860
Cr	1.000	+/-	26.865
V	1.000	+/-	21.761
Ti	1.000	+/-	113.026
Ca	13265.148	+/-	316.354
K	3085.668	+/-	211.326
Al	2209.197	+/-	627.898
P	1131.063	+/-	96.089
Si	11063.719	+/-	422.827
Cl	2947.941	+/-	68.607
S	12970.263	+/-	258.789
Mg	1.000	+/-	6069.671

mRFA -Ergebnisse

XL3t-69288

Reading No 3
Mode Mining
Time 2017-05-30 14:24
Duration 120.87
Units ppm
Sigma Value 2
Sequence Final
Flags
INV NR Gm144
OBJEKT TAFELGEMAELEN
MATERIAL HOLZ METALL FASSUNG
ANALYSESTELLE P23 SCHLEIERWERK
MESSAUFBAU STATIV
FILTER m30lo30hi30li30
User Login Raquet



	ppm	+/-	Error
Ce	-339.000	+/-	80.846
La	1.000	+/-	37.216
Ba	1.000	+/-	40.305
Sb	1.000	+/-	16.912
Sn	1.000	+/-	9.597
Cd	7.786	+/-	5.590
Ag	20.483	+/-	4.287
Bal	773167.125	+/-	1135.151
Nb	1.000	+/-	1.945
Zr	1.000	+/-	7.539
Y	1.000	+/-	1.455
Sr	308.921	+/-	5.771
Rb	18.601	+/-	4.935
Th	1.000	+/-	116.130
Bi	1.000	+/-	87.240
Au	3147.890	+/-	49.671
As	172.170	+/-	14.849
Se	1.000	+/-	5.858
Pb	349.024	+/-	11.861
Hg	1.000	+/-	4.302
Zn	92.656	+/-	13.097
Cu	53.485	+/-	12.877
Ni	1.000	+/-	22.452
Co	1.000	+/-	36.894
Fe	5893.169	+/-	120.826
Mn	1.000	+/-	62.143
Cr	132.654	+/-	22.427
V	1.000	+/-	69.896
Ti	1607.222	+/-	240.423
Ca	81166.250	+/-	568.028
K	3030.331	+/-	145.971
Al	13380.985	+/-	1095.356
P	52435.316	+/-	472.066
Si	48701.898	+/-	915.657
Cl	363.987	+/-	28.896
S	15950.037	+/-	156.313
Mg	1.000	+/-	7534.152

mRFA -Ergebnisse

XL3t-69288

Reading No 4
Mode Mining
Time 2017-05-30 14:28
Duration 122.03
Units ppm
Sigma Value 2
Sequence Final
Flags
INV NR Gm144
OBJEKT TAFELGEMAELEN
MATERIAL HOLZ METALL FASSUNG
ANALYSESTELLE P24 SCHLEIERWERK
MESSAUFBAU STATIV
FILTER m30lo30hi30li30
User Login Raquet



	ppm	+/-	Error
Ce	-339.000	+/-	83.942
La	1.000	+/-	38.568
Ba	1.000	+/-	64.054
Sb	1.000	+/-	23.471
Sn	18.713	+/-	8.327
Cd	10.399	+/-	5.865
Ag	48.260	+/-	5.526
Bal	781949.938	+/-	1144.767
Nb	1.000	+/-	4.051
Zr	13.728	+/-	10.921
Y	1.000	+/-	2.183
Sr	268.764	+/-	5.741
Rb	51.461	+/-	7.355
Th	1.000	+/-	162.608
Bi	1.000	+/-	118.845
Au	7035.507	+/-	84.408
As	237.578	+/-	19.867
Se	1.000	+/-	9.107
Pb	639.335	+/-	16.950
Hg	1.000	+/-	10.459
Zn	201.016	+/-	18.982
Cu	161.736	+/-	16.636
Ni	1.000	+/-	24.924
Co	1.000	+/-	47.823
Fe	9594.771	+/-	159.985
Mn	1.000	+/-	63.489
Cr	67.792	+/-	29.901
V	1.000	+/-	74.226
Ti	1475.529	+/-	282.080
Ca	58599.242	+/-	494.790
K	4003.846	+/-	183.422
Al	15238.962	+/-	1135.262
P	49596.965	+/-	472.601
Si	48722.930	+/-	909.170
Cl	797.902	+/-	32.783
S	21265.646	+/-	197.032
Mg	1.000	+/-	7994.233

mRFA -Ergebnisse

XL3t-69288

Reading No 5
Mode Mining
Time 2017-05-30 14:34
Duration 121.15
Units ppm
Sigma Value 2
Sequence Final
Flags
INV NR Gm144
OBJEKT TAFELGEMAELEN
MATERIAL HOLZ METALL FASSUNG
ANALYSESTELLE P25 KRAGEN KATHARINA
MESSAUFBAU STATIV
FILTER m30lo30hi30li30
User Login Raquet



	ppm	+/-	Error
Ce	-339.000	+/-	110.602
La	1.000	+/-	50.687
Ba	1.000	+/-	54.460
Sb	1.000	+/-	18.419
Sn	13.574	+/-	10.235
Cd	1.000	+/-	7.949
Ag	15.094	+/-	5.322
Bal	777369.563	+/-	1178.980
Nb	1.000	+/-	2.721
Zr	1.000	+/-	10.555
Y	1.000	+/-	2.172
Sr	464.453	+/-	8.261
Rb	29.196	+/-	7.089
Th	1.000	+/-	154.038
Bi	1.000	+/-	124.518
Au	5619.503	+/-	78.802
As	161.050	+/-	18.993
Se	1.000	+/-	8.792
Pb	509.260	+/-	16.159
Hg	1.000	+/-	6.441
Zn	168.438	+/-	18.765
Cu	347.284	+/-	22.562
Ni	1.000	+/-	27.589
Co	1.000	+/-	48.834
Fe	9268.953	+/-	168.797
Mn	161.148	+/-	69.277
Cr	119.327	+/-	27.367
V	40.034	+/-	24.320
Ti	429.064	+/-	133.327
Ca	162214.875	+/-	1044.438
K	1906.056	+/-	168.430
Al	1864.440	+/-	1060.967
P	21335.078	+/-	337.593
Si	7253.929	+/-	579.192
Cl	1035.255	+/-	46.566
S	9674.427	+/-	132.939
Mg	1.000	+/-	11713.165

mRFA -Ergebnisse

XL3t-69288

Reading No 6
Mode Mining
Time 2017-05-30 14:38
Duration 120.16
Units ppm
Sigma Value 2
Sequence Final
Flags
INV NR Gm144
OBJEKT TAFELGEMAELENDE
MATERIAL HOLZ METALL FASSUNG
ANALYSESTELLE P26 BROKAT KATHARINA
MESSAUFBAU STATIV
FILTER m30lo30hi30li30
User Login Raquet



	ppm	+/-	Error
Ce	-339.000	+/-	260.451
La	1.000	+/-	112.190
Ba	1.000	+/-	118.775
Sb	1.000	+/-	37.487
Sn	31487.055	+/-	490.563
Cd	180.155	+/-	19.763
Ag	1249.012	+/-	34.056
Bal	862840.500	+/-	1381.000
Nb	1.000	+/-	24.531
Zr	1.000	+/-	63.733
Y	1.000	+/-	16.080
Sr	253.077	+/-	10.130
Rb	1.000	+/-	41.855
Th	1.000	+/-	906.561
Bi	1.000	+/-	800.645
Au	1369.543	+/-	59.528
As	192.436	+/-	139.460
Se	1.000	+/-	16.351
Pb	18254.742	+/-	325.507
Hg	66.985	+/-	15.187
Zn	94.917	+/-	20.935
Cu	1617.868	+/-	67.631
Ni	1.000	+/-	56.645
Co	46.413	+/-	46.388
Fe	751.428	+/-	94.231
Mn	1.000	+/-	108.248
Cr	57.401	+/-	27.899
V	1.000	+/-	24.513
Ti	1.000	+/-	126.506
Ca	42394.895	+/-	830.028
K	3877.450	+/-	365.687
Al	1269.050	+/-	924.416
P	4856.696	+/-	209.591
Si	13547.103	+/-	660.809
Cl	5241.499	+/-	120.925
S	10351.746	+/-	221.900
Mg	1.000	+/-	9566.274

mRFA -Ergebnisse

XL3t-69288

Reading No 7
Mode Mining
Time 2017-05-30 14:42
Duration 120.46
Units ppm
Sigma Value 2
Sequence Final
Flags
INV NR Gm144
OBJEKT TAFELGEMAELENDE
MATERIAL HOLZ METALL FASSUNG
ANALYSESTELLE P27 BUCHECKE
MESSAUFBAU STATIV
FILTER m30lo30hi30li30
User Login Raquet



	ppm	+/-	Error
Ce	-339.000	+/-	136.288
La	1.000	+/-	62.540
Ba	1.000	+/-	66.436
Sb	1.000	+/-	21.980
Sn	247.660	+/-	17.063
Cd	1.000	+/-	7.704
Ag	14.799	+/-	6.095
Bal	889304.125	+/-	822.862
Nb	1.000	+/-	22.667
Zr	1.000	+/-	52.883
Y	1.000	+/-	12.959
Sr	370.655	+/-	10.096
Rb	42.970	+/-	26.138
Th	1.000	+/-	750.854
Bi	1.000	+/-	640.980
Au	4462.503	+/-	94.507
As	6121.567	+/-	149.180
Se	1.000	+/-	14.086
Pb	19213.381	+/-	283.220
Hg	1.000	+/-	12.293
Zn	165.380	+/-	19.464
Cu	1409.157	+/-	48.120
Ni	1.000	+/-	32.890
Co	1.000	+/-	34.119
Fe	1966.924	+/-	96.636
Mn	1.000	+/-	80.111
Cr	113.268	+/-	23.793
V	1.000	+/-	18.111
Ti	1.000	+/-	94.509
Ca	27228.873	+/-	436.520
K	3184.883	+/-	174.263
Al	1058.142	+/-	586.389
P	16396.477	+/-	321.060
Si	9215.347	+/-	462.643
Cl	2197.198	+/-	52.456
S	17286.697	+/-	276.577
Mg	1.000	+/-	6537.039

mRFA -Ergebnisse

XL3t-69288

Reading No 8
Mode Mining
Time 2017-05-30 14:46
Duration 120.01
Units ppm
Sigma Value 2
Sequence Final
Flags
INV NR Gm144
OBJEKT TAFELGEMAELEN
MATERIAL HOLZ METALL FASSUNG
ANALYSESTELLE P28 TURMSPITZE
MESSAUFBAU STATIV
FILTER m30lo30hi30li30
User Login Raquet



	ppm	+/-	Error
Ce	-96.681	+/-	200.106
La	128.306	+/-	91.436
Ba	179.415	+/-	97.125
Sb	1.000	+/-	41.291
Sn	22.707	+/-	16.652
Cd	1.000	+/-	10.546
Ag	13.651	+/-	8.079
Bal	844895.625	+/-	1810.750
Nb	71.070	+/-	45.822
Zr	1.000	+/-	141.850
Y	1.000	+/-	37.481
Sr	254.092	+/-	13.769
Rb	1.000	+/-	114.223
Th	1.000	+/-	2085.266
Bi	1.000	+/-	1454.005
Au	3003.455	+/-	108.816
As	14577.477	+/-	386.306
Se	1.000	+/-	31.576
Pb	66464.305	+/-	1284.552
Hg	1.000	+/-	25.665
Zn	244.262	+/-	24.025
Cu	769.838	+/-	45.474
Ni	122.528	+/-	48.102
Co	62.042	+/-	38.443
Fe	503.449	+/-	81.929
Mn	292.424	+/-	98.383
Cr	42.664	+/-	30.189
V	1.000	+/-	25.469
Ti	1.000	+/-	128.061
Ca	16912.063	+/-	392.459
K	5832.527	+/-	268.117
Al	4488.102	+/-	759.118
P	9086.625	+/-	260.939
Si	13080.153	+/-	548.169
Cl	2080.146	+/-	61.480
S	16629.758	+/-	364.601
Mg	1.000	+/-	6655.717