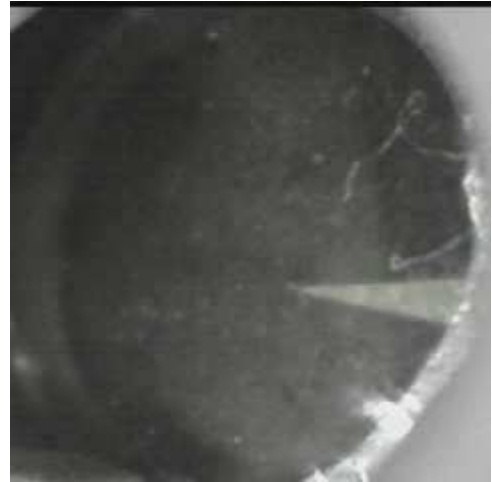


mRFA -Ergebnisse

XL3t-69288

Reading No 1
Mode Mining
Time 2017-04-27 14:17
Duration 121.14
Units ppm
Sigma Value 2
Sequence Final
Flags
INV NR Gm143
OBJEKT TAFELGEMAELEN
MATERIAL HOLZ METALL FASSUNG
ANALYSESTELLE P1 IS LANZENSPITZE
MESSAUFBAU STATIV ANLIEGEND
FILTER m30lo30hi30li30
User Login Raquet



	ppm	+/-	Error
Ce	-339.000	+/-	120.795
La	1.000	+/-	55.418
Ba	1.000	+/-	59.278
Sb	1.000	+/-	19.564
Sn	391.259	+/-	20.293
Cd	12.013	+/-	7.882
Ag	678.604	+/-	20.065
Bal	862507.375	+/-	1067.996
Nb	31.522	+/-	21.376
Zr	1.000	+/-	72.274
Y	1.000	+/-	17.415
Sr	224.544	+/-	8.536
Rb	1.000	+/-	46.278
Th	1.000	+/-	1013.210
Bi	1.000	+/-	960.371
Au	1.000	+/-	25.329
As	7839.461	+/-	201.763
Se	1.000	+/-	16.992
Pb	29969.643	+/-	485.047
Hg	1.000	+/-	13.949
Zn	107.966	+/-	14.386
Cu	4027.453	+/-	99.700
Ni	63.611	+/-	38.105
Co	601.781	+/-	58.810
Fe	3166.004	+/-	126.891
Mn	78.863	+/-	73.604
Cr	29.297	+/-	22.274
V	1.000	+/-	28.971
Ti	1.000	+/-	155.889
Ca	14845.396	+/-	319.533
K	7266.241	+/-	303.092
Al	5320.831	+/-	727.713
P	2812.469	+/-	143.631
Si	35593.953	+/-	888.644
Cl	4863.478	+/-	100.036
S	19568.221	+/-	356.053
Mg	1.000	+/-	5835.349

mRFA -Ergebnisse

XL3t-69288

Reading No 2
Mode Mining
Time 2017-04-27 14:22
Duration 121.55
Units ppm
Sigma Value 2
Sequence Final
Flags
INV NR Gm143
OBJEKT TAFELGEMAELEN
MATERIAL HOLZ METALL FASSUNG
ANALYSESTELLE P2 IS TURMHAUBE
MESSAUFBAU STATIV ANLIEGEND
FILTER m30lo30hi30li30
User Login Raquet



	ppm	+/-	Error
Ce	-339.000	+/-	110.261
La	1.000	+/-	50.350
Ba	1.000	+/-	53.365
Sb	1.000	+/-	19.301
Sn	505.461	+/-	20.766
Cd	12.038	+/-	7.226
Ag	705.698	+/-	19.346
Bal	899018.188	+/-	800.411
Nb	27.547	+/-	19.308
Zr	1.000	+/-	65.437
Y	1.000	+/-	16.045
Sr	227.780	+/-	8.219
Rb	1.000	+/-	38.177
Th	1.000	+/-	916.465
Bi	1.000	+/-	763.722
Au	1.000	+/-	22.500
As	7191.064	+/-	182.159
Se	1.000	+/-	12.431
Pb	27995.029	+/-	429.282
Hg	1.000	+/-	12.565
Zn	69.115	+/-	11.011
Cu	1992.969	+/-	60.005
Ni	1.000	+/-	32.482
Co	1.000	+/-	36.660
Fe	2703.489	+/-	113.784
Mn	1.000	+/-	80.832
Cr	1.000	+/-	33.517
V	1.000	+/-	21.865
Ti	1.000	+/-	99.701
Ca	7988.720	+/-	208.303
K	4336.135	+/-	247.413
Al	3525.958	+/-	614.881
P	1305.472	+/-	116.039
Si	17699.938	+/-	556.172
Cl	4503.503	+/-	90.577
S	20191.889	+/-	353.334
Mg	1.000	+/-	8949.810

mRFA -Ergebnisse

XL3t-69288

Reading No 3
Mode Mining
Time 2017-04-27 14:27
Duration 121.18
Units ppm
Sigma Value 2
Sequence Final
Flags 3mm
INV NR Gm143
OBJEKT TAFELGEMAELENDE
MATERIAL HOLZ METALL FASSUNG
ANALYSESTELLE P2 IS TURMHAUBE
MESSAUFBAU STATIV ANLIEGEND
FILTER m30lo30hi30li30
User Login Raquet



	ppm	+/-	Error
Ce	1.000	+/-	190.142
La	1.000	+/-	154.250
Ba	870.223	+/-	182.653
Sb	1.000	+/-	62.067
Sn	64.128	+/-	38.117
Cd	1.000	+/-	18.472
Ag	1.000	+/-	11.903
Bal	847506.813	+/-	1885.057
Nb	42.189	+/-	33.400
Zr	1.000	+/-	112.256
Y	1.000	+/-	28.332
Sr	339.896	+/-	16.946
Rb	1.000	+/-	67.773
Th	1.000	+/-	1513.277
Bi	1.000	+/-	1475.365
Au	1.000	+/-	42.225
As	8054.564	+/-	301.467
Se	23.756	+/-	21.011
Pb	33454.488	+/-	796.581
Hg	1.000	+/-	25.098
Zn	131.941	+/-	31.746
Cu	14591.515	+/-	398.610
Ni	339.696	+/-	71.083
Co	2573.064	+/-	162.285
Fe	4457.786	+/-	234.278
Mn	261.093	+/-	181.942
Cr	1.000	+/-	85.418
V	1.000	+/-	246.186
Ti	1.000	+/-	1092.238
Ca	13255.587	+/-	409.545
K	7588.639	+/-	413.514
Al	7421.079	+/-	1169.085
P	1614.986	+/-	203.698
Si	21117.129	+/-	938.258
Cl	3618.790	+/-	123.427
S	32672.648	+/-	787.264
Mg	1.000	+/-	15656.359

mRFA -Ergebnisse

XL3t-69288

Reading No 4
Mode Mining
Time 2017-04-27 14:32
Duration 121.02
Units ppm
Sigma Value 2
Sequence Final
Flags 3mm
INV NR Gm143
OBJEKT TAFELGEMAELENDE
MATERIAL HOLZ METALL FASSUNG
ANALYSESTELLE P4 IS BLAUER HINTERGRUND FEHLT
MESSAUFBAU STATIV ANLIEGEND
FILTER m30lo30hi30li30
User Login Raquet



	ppm	+/-	Error
Ce	1.000	+/-	196.124
La	1.000	+/-	158.381
Ba	1132.869	+/-	192.020
Sb	1.000	+/-	67.211
Sn	100.357	+/-	40.621
Cd	1.000	+/-	20.917
Ag	1.000	+/-	11.137
Bal	852103.125	+/-	1870.593
Nb	1.000	+/-	50.074
Zr	1.000	+/-	122.689
Y	1.000	+/-	31.029
Sr	325.479	+/-	16.980
Rb	1.000	+/-	82.054
Th	1.000	+/-	1915.152
Bi	1.000	+/-	1362.090
Au	1.000	+/-	44.733
As	9142.076	+/-	334.646
Se	1.000	+/-	26.169
Pb	38719.887	+/-	949.162
Hg	1.000	+/-	25.803
Zn	138.035	+/-	35.641
Cu	22219.359	+/-	563.133
Ni	314.527	+/-	68.274
Co	2652.056	+/-	154.134
Fe	2767.757	+/-	178.808
Mn	218.815	+/-	176.354
Cr	1.000	+/-	57.566
V	207.221	+/-	157.966
Ti	794.083	+/-	725.130
Ca	4967.042	+/-	223.562
K	7156.459	+/-	392.319
Al	5852.416	+/-	1011.593
P	1481.819	+/-	186.068
Si	16636.219	+/-	802.025
Cl	3712.385	+/-	125.403
S	29358.031	+/-	730.525
Mg	1.000	+/-	9224.849

mRFA -Ergebnisse

XL3t-69288

Reading No 5
Mode Mining
Time 2017-04-27 14:36
Duration 122.05
Units ppm
Sigma Value 2
Sequence Final
Flags 3mm
INV NR Gm143
OBJEKT TAFELGEMAELEN
MATERIAL HOLZ METALL FASSUNG
ANALYSESTELLE P5 IS BLAUER HINTERGRUND
MESSAUFBAU STATIV ANLIEGEND
FILTER m30lo30hi30li30
User Login Raquet

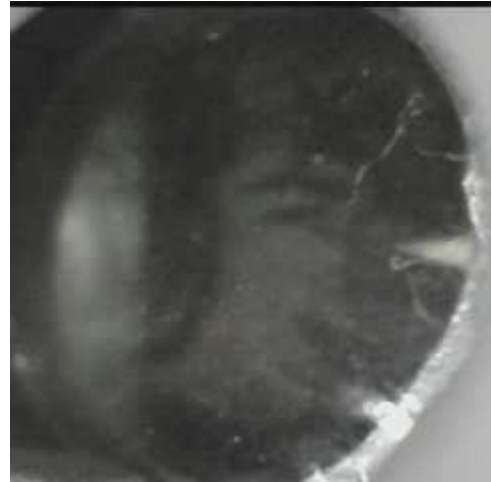


	ppm	+/-	Error
Ce	1.000	+/-	308.791
La	263.493	+/-	220.394
Ba	2914.191	+/-	293.333
Sb	1.000	+/-	72.030
Sn	1.000	+/-	64.820
Cd	1.000	+/-	25.287
Ag	1.000	+/-	25.463
Bal	796115.188	+/-	2944.350
Nb	1.000	+/-	95.727
Zr	1.000	+/-	193.642
Y	1.000	+/-	45.960
Sr	384.006	+/-	21.964
Rb	1.000	+/-	149.546
Th	1.000	+/-	2729.661
Bi	1.000	+/-	3159.794
Au	1.000	+/-	65.512
As	14173.625	+/-	530.221
Se	1.000	+/-	40.521
Pb	58441.066	+/-	1671.025
Hg	1.000	+/-	38.893
Zn	260.604	+/-	35.788
Cu	9857.958	+/-	347.594
Ni	903.597	+/-	99.315
Co	4773.640	+/-	244.499
Fe	3713.958	+/-	236.506
Mn	334.082	+/-	212.044
Cr	1.000	+/-	72.262
V	1.000	+/-	315.603
Ti	1.000	+/-	1251.903
Ca	5323.654	+/-	280.257
K	10277.099	+/-	557.925
Al	7812.805	+/-	1337.806
P	2024.213	+/-	234.700
Si	21710.107	+/-	1083.927
Cl	5312.575	+/-	203.744
S	40604.000	+/-	1311.627
Mg	14800.134	+/-	12172.432

mRFA -Ergebnisse

XL3t-69288

Reading No 6
Mode Mining
Time 2017-04-27 14:40
Duration 121.49
Units ppm
Sigma Value 2
Sequence Final
Flags
INV NR Gm143
OBJEKT TAFELGEMAELEN
MATERIAL HOLZ METALL FASSUNG
ANALYSESTELLE P6 IS WILDER MANN GESICHT
MESSAUFBAU STATIV ANLIEGEND
FILTER m30lo30hi30li30
User Login Raquet

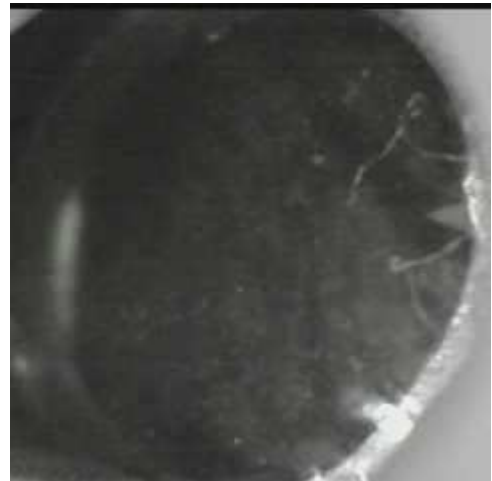


	ppm	+/-	Error
Ce	-339.000	+/-	89.691
La	1.000	+/-	41.331
Ba	1.000	+/-	44.587
Sb	1.000	+/-	22.664
Sn	1.000	+/-	10.153
Cd	9.934	+/-	6.327
Ag	656.429	+/-	16.780
Bal	841335.688	+/-	826.915
Nb	1.000	+/-	2.341
Zr	1.000	+/-	9.258
Y	1.000	+/-	1.967
Sr	339.675	+/-	6.198
Rb	1.000	+/-	5.273
Th	1.000	+/-	137.297
Bi	1.000	+/-	128.064
Au	1.000	+/-	9.355
As	208.332	+/-	20.829
Se	1.000	+/-	2.989
Pb	790.500	+/-	18.191
Hg	23.049	+/-	3.845
Zn	28.125	+/-	7.982
Cu	850.568	+/-	29.271
Ni	1.000	+/-	24.610
Co	1.000	+/-	42.943
Fe	7899.437	+/-	144.684
Mn	1.000	+/-	57.796
Cr	71.415	+/-	21.663
V	42.773	+/-	25.768
Ti	1242.848	+/-	147.973
Ca	114381.688	+/-	762.721
K	6662.469	+/-	225.470
Al	1859.059	+/-	712.333
P	389.257	+/-	100.568
Si	14018.425	+/-	512.155
Cl	2775.999	+/-	50.298
S	6414.338	+/-	91.524
Mg	1.000	+/-	6999.553

mRFA -Ergebnisse

XL3t-69288

Reading No 7
Mode Mining
Time 2017-04-27 14:45
Duration 121.45
Units ppm
Sigma Value 2
Sequence Final
Flags
INV NR Gm143
OBJEKT TAFELGEMAELENDE
MATERIAL HOLZ METALL FASSUNG
ANALYSESTELLE P7 IS WILDER MANN ARM
MESSAUFBAU STATIV ANLIEGEND
FILTER m30lo30hi30li30
User Login Raquet

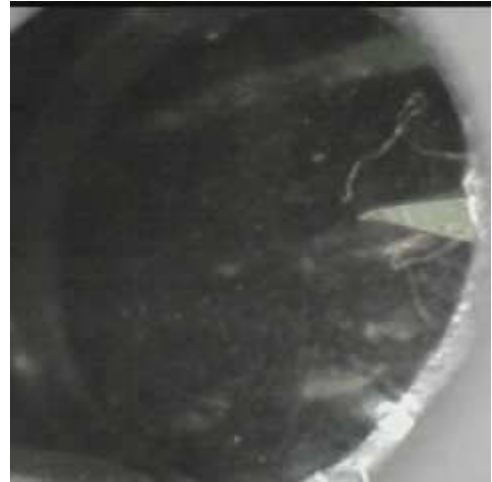


	ppm	+/-	Error
Ce	-339.000	+/-	83.862
La	1.000	+/-	38.687
Ba	1.000	+/-	41.599
Sb	1.000	+/-	20.369
Sn	1.000	+/-	9.382
Cd	17.565	+/-	6.099
Ag	630.930	+/-	15.431
Bal	798345.188	+/-	969.251
Nb	1.000	+/-	1.865
Zr	1.000	+/-	7.261
Y	1.000	+/-	2.126
Sr	364.244	+/-	6.189
Rb	4.100	+/-	3.362
Th	1.000	+/-	107.578
Bi	1.000	+/-	85.446
Au	1.000	+/-	7.511
As	109.640	+/-	14.738
Se	1.000	+/-	2.345
Pb	407.554	+/-	12.521
Hg	5.236	+/-	2.590
Zn	16.881	+/-	7.108
Cu	789.379	+/-	27.192
Ni	1.000	+/-	23.104
Co	1.000	+/-	32.353
Fe	4394.038	+/-	104.294
Mn	1.000	+/-	55.135
Cr	35.419	+/-	21.482
V	1.000	+/-	40.856
Ti	733.963	+/-	140.338
Ca	162895.719	+/-	929.438
K	5582.220	+/-	227.588
Al	2755.094	+/-	871.156
P	1.000	+/-	101.228
Si	13815.525	+/-	545.898
Cl	2841.583	+/-	53.322
S	6255.704	+/-	94.052
Mg	1.000	+/-	8979.451

mRFA -Ergebnisse

XL3t-69288

Reading No 8
Mode Mining
Time 2017-04-27 14:54
Duration 121.78
Units ppm
Sigma Value 2
Sequence Final
Flags
INV NR Gm143
OBJEKT TAFELGEMAELEN
MATERIAL HOLZ METALL FASSUNG
ANALYSESTELLE P8 IS SCHWARZZEICHNUNG SOCKEL
MESSAUFBAU STATIV
FILTER m30lo30hi30li30
User Login Raquet



	ppm	+/-	Error
Ce	-339.000	+/-	77.320
La	1.000	+/-	35.462
Ba	1.000	+/-	38.343
Sb	1.000	+/-	13.474
Sn	12.702	+/-	7.339
Cd	9.311	+/-	5.337
Ag	13.889	+/-	3.854
Bal	861786.375	+/-	726.461
Nb	1.000	+/-	4.538
Zr	1.000	+/-	17.806
Y	1.000	+/-	3.859
Sr	303.162	+/-	6.026
Rb	23.030	+/-	8.728
Th	1.000	+/-	263.266
Bi	1.000	+/-	247.997
Au	2720.563	+/-	48.873
As	1187.543	+/-	44.157
Se	1.000	+/-	7.229
Pb	3590.408	+/-	46.552
Hg	1.000	+/-	5.685
Zn	80.370	+/-	14.311
Cu	5840.075	+/-	82.968
Ni	1.000	+/-	23.547
Co	1.000	+/-	44.459
Fe	9209.288	+/-	156.487
Mn	187.193	+/-	59.279
Cr	60.978	+/-	22.666
V	56.638	+/-	27.759
Ti	1051.225	+/-	154.945
Ca	62261.148	+/-	548.121
K	7396.662	+/-	213.700
Al	3219.005	+/-	631.369
P	5276.849	+/-	152.412
Si	20464.871	+/-	558.576
Cl	1935.510	+/-	39.307
S	13313.231	+/-	145.031
Mg	1.000	+/-	9975.950

mRFA -Ergebnisse

XL3t-69288

Reading No 9
Mode Mining
Time 2017-04-27 15:05
Duration 120.65
Units ppm
Sigma Value 2
Sequence Final
Flags
INV NR Gm143
OBJEKT TAFELGEMAELEN
MATERIAL HOLZ METALL FASSUNG
ANALYSESTELLE P9 IS BRUSTHARNISCH
MESSAUFBAU STATIV
FILTER m30lo30hi30li30
User Login Raquet

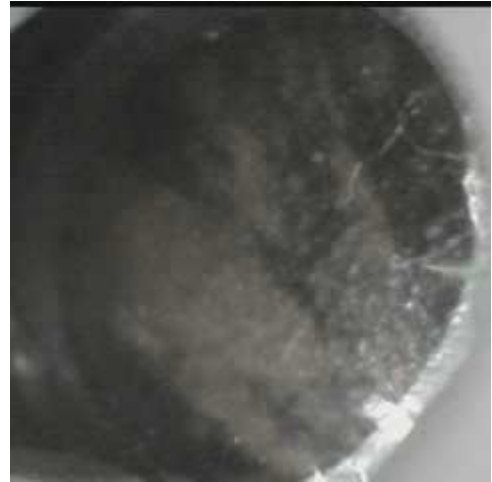


	ppm	+/-	Error
Ce	-339.000	+/-	116.944
La	1.000	+/-	53.297
Ba	1.000	+/-	57.306
Sb	1.000	+/-	22.060
Sn	737.434	+/-	25.842
Cd	16.661	+/-	7.846
Ag	1260.450	+/-	27.638
Bal	900294.875	+/-	763.734
Nb	24.170	+/-	16.737
Zr	1.000	+/-	57.621
Y	1.000	+/-	14.026
Sr	272.941	+/-	8.610
Rb	1.000	+/-	36.144
Th	1.000	+/-	815.403
Bi	1.000	+/-	687.858
Au	1.000	+/-	24.694
As	6159.683	+/-	160.553
Se	1.000	+/-	14.480
Pb	23332.982	+/-	350.011
Hg	1.000	+/-	12.021
Zn	95.230	+/-	12.169
Cu	1471.751	+/-	49.795
Ni	1.000	+/-	33.012
Co	1.000	+/-	43.284
Fe	3947.802	+/-	136.602
Mn	1.000	+/-	94.657
Cr	1.000	+/-	32.897
V	1.000	+/-	23.338
Ti	1.000	+/-	126.569
Ca	15883.267	+/-	303.553
K	6305.061	+/-	254.643
Al	1959.540	+/-	636.029
P	1285.824	+/-	128.535
Si	13972.071	+/-	531.822
Cl	3410.986	+/-	73.902
S	19569.166	+/-	331.011
Mg	1.000	+/-	6534.941

mRFA -Ergebnisse

XL3t-69288

Reading No 10
Mode Mining
Time 2017-04-27 15:09
Duration 121.64
Units ppm
Sigma Value 2
Sequence Final
Flags
INV NR Gm143
OBJEKT TAFELGEMAELEN
MATERIAL HOLZ METALL FASSUNG
ANALYSESTELLE P10 IS BRECHRAND
MESSAUFBAU STATIV
FILTER m30lo30hi30li30
User Login Raquet



	ppm	+/-	Error
Ce	-339.000	+/-	115.016
La	1.000	+/-	52.802
Ba	1.000	+/-	56.125
Sb	1.000	+/-	18.460
Sn	693.161	+/-	22.163
Cd	10.994	+/-	7.507
Ag	43.913	+/-	6.266
Bal	895963.875	+/-	804.703
Nb	20.454	+/-	17.494
Zr	1.000	+/-	60.116
Y	1.000	+/-	14.685
Sr	251.268	+/-	8.462
Rb	1.000	+/-	48.494
Th	1.000	+/-	846.979
Bi	1.000	+/-	681.811
Au	2505.699	+/-	69.427
As	6740.736	+/-	167.496
Se	1.000	+/-	13.723
Pb	23828.602	+/-	358.193
Hg	1.000	+/-	12.950
Zn	146.835	+/-	16.925
Cu	1113.226	+/-	42.995
Ni	1.000	+/-	32.688
Co	1.000	+/-	46.249
Fe	4743.078	+/-	151.435
Mn	280.532	+/-	79.445
Cr	55.897	+/-	23.116
V	1.000	+/-	29.639
Ti	1.000	+/-	128.757
Ca	13999.034	+/-	285.108
K	6564.586	+/-	244.593
Al	2322.348	+/-	561.823
P	5679.224	+/-	171.813
Si	14347.117	+/-	502.159
Cl	2803.291	+/-	60.328
S	17886.152	+/-	297.599
Mg	1.000	+/-	5778.080

mRFA -Ergebnisse

XL3t-69288

Reading No 11
Mode Mining
Time 2017-04-27 15:14
Duration 120.17
Units ppm
Sigma Value 2
Sequence Final
Flags 3mm
INV NR Gm143
OBJEKT TAFELGEMAELENDE
MATERIAL HOLZ METALL FASSUNG
ANALYSESTELLE P11 IS BRECHRAND
MESSAUFBAU STATIV
FILTER m30lo30hi30li30
User Login Raquet



	ppm	+/-	Error
Ce	1.000	+/-	234.091
La	1.000	+/-	159.035
Ba	1.000	+/-	172.813
Sb	1.000	+/-	43.972
Sn	858.426	+/-	62.768
Cd	1.000	+/-	24.488
Ag	47.109	+/-	14.678
Bal	887461.375	+/-	1302.481
Nb	1.000	+/-	31.979
Zr	1.000	+/-	82.077
Y	1.000	+/-	20.397
Sr	301.418	+/-	14.135
Rb	57.739	+/-	41.634
Th	1.000	+/-	1114.009
Bi	1.000	+/-	1005.889
Au	5665.559	+/-	170.387
As	5763.701	+/-	210.302
Se	1.000	+/-	21.914
Pb	20961.732	+/-	458.942
Hg	1.000	+/-	22.308
Zn	215.619	+/-	33.412
Cu	1194.193	+/-	67.990
Ni	1.000	+/-	45.269
Co	1.000	+/-	73.011
Fe	4675.125	+/-	229.969
Mn	1.000	+/-	109.104
Cr	128.741	+/-	37.804
V	1.000	+/-	32.329
Ti	1.000	+/-	151.878
Ca	13590.688	+/-	399.359
K	5928.141	+/-	331.489
Al	2520.281	+/-	817.559
P	17118.422	+/-	481.260
Si	10470.635	+/-	708.733
Cl	3969.044	+/-	125.749
S	19071.996	+/-	447.389
Mg	1.000	+/-	8234.229

mRFA -Ergebnisse

XL3t-69288

Reading No 12
Mode Mining
Time 2017-04-27 15:20
Duration 121.48
Units ppm
Sigma Value 2
Sequence Final
Flags 3mm
INV NR Gm143
OBJEKT TAFELGEMAELENDE
MATERIAL HOLZ METALL FASSUNG
ANALYSESTELLE P12 IS STREITHAMMER
MESSAUFBAU STATIV
FILTER m30lo30hi30li30
User Login Raquet

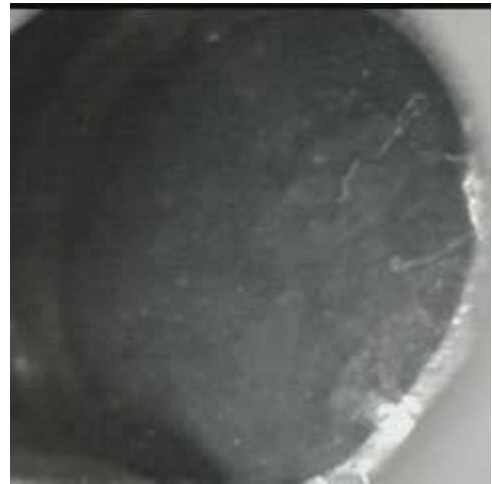


	ppm	+/-	Error
Ce	1.000	+/-	174.980
La	1.000	+/-	142.422
Ba	1.000	+/-	147.598
Sb	1.000	+/-	65.447
Sn	563.541	+/-	70.642
Cd	27.000	+/-	20.865
Ag	1473.283	+/-	69.326
Bal	917002.438	+/-	1069.109
Nb	1.000	+/-	44.847
Zr	1.000	+/-	100.261
Y	1.000	+/-	25.294
Sr	221.679	+/-	12.929
Rb	1.000	+/-	64.109
Th	1.000	+/-	1344.856
Bi	1.000	+/-	1116.833
Au	1.000	+/-	38.534
As	6609.918	+/-	255.200
Se	1.000	+/-	18.195
Pb	29670.188	+/-	671.533
Hg	1.000	+/-	21.992
Zn	88.937	+/-	16.961
Cu	823.951	+/-	58.534
Ni	1.000	+/-	46.240
Co	69.460	+/-	66.980
Fe	2523.488	+/-	177.233
Mn	1.000	+/-	121.221
Cr	48.050	+/-	36.020
V	1.000	+/-	29.877
Ti	1.000	+/-	137.608
Ca	6527.925	+/-	283.096
K	4640.888	+/-	372.188
Al	1615.635	+/-	745.814
P	690.058	+/-	144.430
Si	9641.366	+/-	638.458
Cl	3591.567	+/-	128.460
S	14170.695	+/-	379.557
Mg	1.000	+/-	7580.956

mRFA -Ergebnisse

XL3t-69288

Reading No 13
Mode Mining
Time 2017-04-27 15:28
Duration 122.21
Units ppm
Sigma Value 2
Sequence Final
Flags
INV NR Gm143
OBJEKT TAFELGEMAELEN
MATERIAL HOLZ METALL FASSUNG
ANALYSESTELLE P13 IS SCHLEIERWERK
MESSAUFBAU STATIV
FILTER m30lo30hi30li30
User Login Raquet



	ppm	+/-	Error
Ce	-339.000	+/-	142.983
La	1.000	+/-	65.528
Ba	1906.045	+/-	91.463
Sb	1.000	+/-	38.654
Sn	242.996	+/-	19.903
Cd	30.426	+/-	9.491
Ag	710.867	+/-	22.820
Bal	781378.188	+/-	1922.011
Nb	48.962	+/-	35.479
Zr	1.000	+/-	116.309
Y	1.000	+/-	25.832
Sr	270.779	+/-	11.328
Rb	1.000	+/-	90.586
Th	1.000	+/-	1605.283
Bi	2587.877	+/-	1230.385
Au	1.000	+/-	40.353
As	9829.465	+/-	275.756
Se	1.000	+/-	26.261
Pb	40717.340	+/-	764.949
Hg	1.000	+/-	20.548
Zn	160.874	+/-	16.460
Cu	449.084	+/-	34.007
Ni	654.273	+/-	61.226
Co	3081.465	+/-	128.668
Fe	5596.564	+/-	196.552
Mn	211.822	+/-	121.817
Cr	1.000	+/-	44.908
V	1.000	+/-	153.072
Ti	1.000	+/-	812.226
Ca	18841.883	+/-	417.097
K	9907.491	+/-	345.963
Al	16870.148	+/-	1322.374
P	3026.873	+/-	197.309
Si	36603.570	+/-	1015.506
Cl	6347.570	+/-	146.919
S	47050.254	+/-	946.792
Mg	13475.235	+/-	9448.226

mRFA -Ergebnisse

XL3t-69288

Reading No 14
Mode Mining
Time 2017-04-27 15:37
Duration 120.27
Units ppm
Sigma Value 2
Sequence Final
Flags
INV NR Gm143
OBJEKT TAFELGEMAELEN
MATERIAL HOLZ METALL FASSUNG
ANALYSESTELLE P14 IS SCHLEIERWERK
MESSAUFBAU STATIV
FILTER m30lo30hi30li30
User Login Raquet



	ppm	+/-	Error
Ce	-339.000	+/-	177.563
La	1.000	+/-	81.048
Ba	2456.409	+/-	115.998
Sb	1.000	+/-	27.423
Sn	48.908	+/-	17.727
Cd	1.000	+/-	9.629
Ag	388.140	+/-	18.871
Bal	829506.313	+/-	1566.728
Nb	1.000	+/-	63.962
Zr	1.000	+/-	127.585
Y	1.000	+/-	27.866
Sr	318.365	+/-	12.681
Rb	1.000	+/-	98.683
Th	1.000	+/-	1744.369
Bi	2907.209	+/-	1333.084
Au	1.000	+/-	39.090
As	11421.978	+/-	308.511
Se	25.486	+/-	19.265
Pb	43143.777	+/-	832.484
Hg	1.000	+/-	21.725
Zn	154.556	+/-	15.845
Cu	294.799	+/-	30.024
Ni	554.545	+/-	60.107
Co	3231.968	+/-	132.512
Fe	5193.592	+/-	190.807
Mn	347.283	+/-	132.553
Cr	1.000	+/-	66.313
V	1.000	+/-	193.670
Ti	1.000	+/-	996.020
Ca	10184.196	+/-	275.935
K	7571.493	+/-	322.399
Al	8780.242	+/-	1158.722
P	2647.327	+/-	212.006
Si	25684.670	+/-	912.033
Cl	3515.605	+/-	98.988
S	41623.160	+/-	907.324
Mg	1.000	+/-	11655.043