

mRFA -Ergebnisse

XL3t-69288

Reading No 1
Mode Mining
Time 2017-04-27 10:18
Duration 121.81
Units ppm
Sigma Value 2
Sequence Final
Flags
INV NR Gm142
OBJEKT TAFELGEMAELEN
MATERIAL HOLZ METALL FASSUNG
ANALYSESTELLE P1 SCHLEIERWERK
MESSAUFBAU STATIV ANLIEGEND
FILTER m30lo30hi30li30
User Login Raquet



	ppm	+/-	Error
Ce	-339.000	+/-	67.977
La	1.000	+/-	31.319
Ba	1.000	+/-	33.632
Sb	16.655	+/-	12.359
Sn	118.606	+/-	8.694
Cd	15.804	+/-	4.938
Ag	52.703	+/-	4.673
Bal	828610.563	+/-	872.374
Nb	13.576	+/-	6.258
Zr	1.000	+/-	26.622
Y	1.000	+/-	5.068
Sr	167.461	+/-	4.411
Rb	1.000	+/-	10.570
Th	1.000	+/-	332.815
Bi	1.000	+/-	359.913
Au	88.387	+/-	14.638
As	2143.983	+/-	62.085
Se	1.000	+/-	7.881
Pb	7111.485	+/-	81.757
Hg	1.000	+/-	4.990
Zn	41.912	+/-	7.785
Cu	941.047	+/-	29.802
Ni	1.000	+/-	21.390
Co	1.000	+/-	19.565
Fe	414.305	+/-	43.202
Mn	1.000	+/-	46.507
Cr	1.000	+/-	19.094
V	1.000	+/-	15.781
Ti	1.000	+/-	73.729
Ca	102123.766	+/-	899.980
K	2448.208	+/-	145.120
Al	2218.583	+/-	693.538
P	5096.492	+/-	171.321
Si	16677.160	+/-	548.227
Cl	3037.577	+/-	52.469
S	20743.689	+/-	222.705
Mg	7918.031	+/-	7401.174

mRFA -Ergebnisse

XL3t-69288

Reading No 2
Mode Mining
Time 2017-04-27 10:24
Duration 122.23
Units ppm
Sigma Value 2
Sequence Final
Flags
INV NR Gm142
OBJEKT TAFELGEMAELEN
MATERIAL HOLZ METALL FASSUNG
ANALYSESTELLE P2 SCHLEIERWERK
MESSAUFBAU STATIV ANLIEGEND
FILTER m30lo30hi30li30
User Login Raquet



	ppm	+/-	Error
Ce	-339.000	+/-	63.714
La	1.000	+/-	29.173
Ba	1.000	+/-	31.402
Sb	16.857	+/-	11.768
Sn	26.682	+/-	6.678
Cd	16.009	+/-	4.719
Ag	55.412	+/-	4.571
Bal	767170.625	+/-	1016.259
Nb	4.921	+/-	3.693
Zr	1.000	+/-	12.766
Y	1.000	+/-	2.499
Sr	175.300	+/-	3.915
Rb	1.000	+/-	6.954
Th	1.000	+/-	191.343
Bi	1.000	+/-	205.492
Au	1.000	+/-	6.802
As	701.129	+/-	30.357
Se	1.000	+/-	3.887
Pb	2051.778	+/-	28.328
Hg	1.000	+/-	2.773
Zn	38.352	+/-	6.763
Cu	413.219	+/-	19.052
Ni	1.000	+/-	21.808
Co	289.548	+/-	27.715
Fe	539.590	+/-	42.318
Mn	1.000	+/-	43.326
Cr	1.000	+/-	15.808
V	1.000	+/-	16.734
Ti	1.000	+/-	86.894
Ca	154718.688	+/-	955.509
K	3104.795	+/-	152.414
Al	1292.609	+/-	784.790
P	1.000	+/-	98.284
Si	51673.727	+/-	927.192
Cl	4205.046	+/-	60.215
S	4150.173	+/-	75.256
Mg	9355.516	+/-	7811.003

mRFA -Ergebnisse

XL3t-69288

Reading No 3
Mode Mining
Time 2017-04-27 10:29
Duration 120.09
Units ppm
Sigma Value 2
Sequence Final
Flags
INV NR Gm142
OBJEKT TAFELGEMAELEN
MATERIAL HOLZ METALL FASSUNG
ANALYSESTELLE P3 SCHLEIERWERK
MESSAUFBAU STATIV ANLIEGEND
FILTER m30lo30hi30li30
User Login Raquet

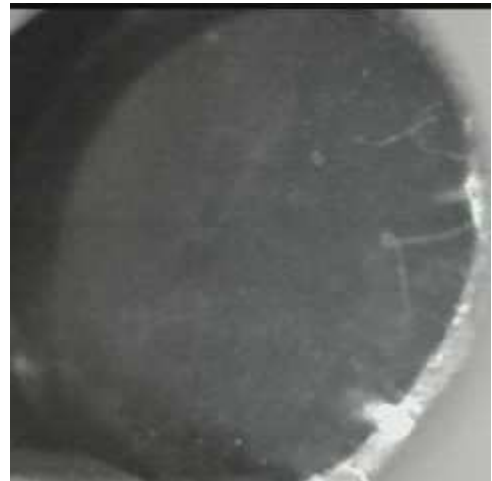


	ppm	+/-	Error
Ce	-339.000	+/-	64.874
La	1.000	+/-	29.684
Ba	1.000	+/-	31.960
Sb	14.646	+/-	11.841
Sn	74.215	+/-	7.817
Cd	18.399	+/-	4.828
Ag	99.417	+/-	5.682
Bal	796219.563	+/-	980.536
Nb	10.118	+/-	5.394
Zr	1.000	+/-	20.760
Y	1.000	+/-	4.090
Sr	135.737	+/-	3.763
Rb	1.000	+/-	11.968
Th	1.000	+/-	287.921
Bi	1.000	+/-	313.847
Au	197.733	+/-	15.215
As	1487.731	+/-	49.001
Se	1.000	+/-	6.282
Pb	4836.819	+/-	56.969
Hg	1.000	+/-	4.267
Zn	54.996	+/-	8.150
Cu	813.831	+/-	26.862
Ni	1.000	+/-	23.972
Co	399.737	+/-	32.468
Fe	731.966	+/-	48.923
Mn	1.000	+/-	44.954
Cr	1.000	+/-	14.569
V	1.000	+/-	17.111
Ti	1.000	+/-	96.060
Ca	112116.273	+/-	897.226
K	2280.935	+/-	133.608
Al	779.926	+/-	723.724
P	4003.507	+/-	161.597
Si	41240.594	+/-	856.045
Cl	5908.636	+/-	78.217
S	12575.460	+/-	151.412
Mg	15999.749	+/-	8180.930

mRFA -Ergebnisse

XL3t-69288

Reading No 4
Mode Mining
Time 2017-04-27 10:33
Duration 121.99
Units ppm
Sigma Value 2
Sequence Final
Flags
INV NR Gm142
OBJEKT TAFELGEMAELENDE
MATERIAL HOLZ METALL FASSUNG
ANALYSESTELLE P4 HINTERGRUND UEBERMALUNG
MESSAUFBAU STATIV ANLIEGEND
FILTER m30lo30hi30li30
User Login Raquet

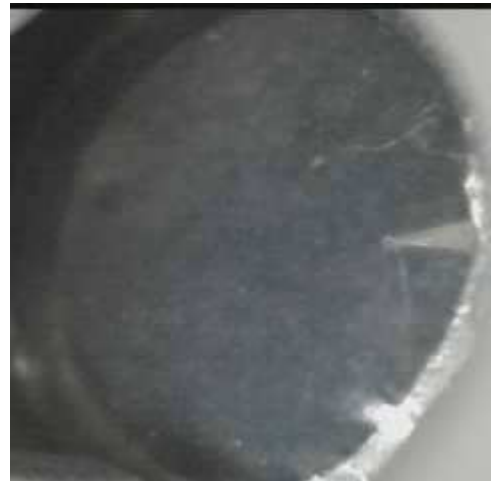


	ppm	+/-	Error
Ce	-339.000	+/-	95.422
La	1.000	+/-	43.798
Ba	1.000	+/-	47.709
Sb	1.000	+/-	16.176
Sn	17.198	+/-	9.038
Cd	8.112	+/-	6.496
Ag	1.000	+/-	4.998
Bal	762746.938	+/-	1338.045
Nb	1.000	+/-	2.208
Zr	1.000	+/-	7.942
Y	1.000	+/-	1.668
Sr	305.254	+/-	6.555
Rb	3.905	+/-	3.707
Th	1.000	+/-	116.694
Bi	1.000	+/-	93.595
Au	1.000	+/-	6.184
As	324.327	+/-	18.406
Se	1.000	+/-	2.557
Pb	329.922	+/-	13.152
Hg	1.000	+/-	2.730
Zn	43.237	+/-	24.847
Cu	49125.012	+/-	366.419
Ni	1.000	+/-	25.848
Co	1.000	+/-	29.702
Fe	1813.401	+/-	69.076
Mn	1.000	+/-	73.013
Cr	56.746	+/-	22.791
V	1.000	+/-	53.512
Ti	336.865	+/-	275.208
Ca	52675.254	+/-	427.103
K	14012.089	+/-	275.539
Al	33724.227	+/-	1503.947
P	1.000	+/-	109.610
Si	65152.906	+/-	913.209
Cl	1158.392	+/-	32.253
S	18166.102	+/-	159.570
Mg	1.000	+/-	6719.353

mRFA -Ergebnisse

XL3t-69288

Reading No 5
Mode Mining
Time 2017-04-27 10:37
Duration 120.72
Units ppm
Sigma Value 2
Sequence Final
Flags
INV NR Gm142
OBJEKT TAFELGEMAELENDE
MATERIAL HOLZ METALL FASSUNG
ANALYSESTELLE P5 HINTERGRUND UEBERMALUNG
MESSAUFBAU STATIV ANLIEGEND
FILTER m30lo30hi30li30
User Login Raquet



	ppm	+/-	Error
Ce	-339.000	+/-	86.455
La	1.000	+/-	39.696
Ba	141.269	+/-	45.345
Sb	1.000	+/-	19.553
Sn	9.039	+/-	8.065
Cd	11.825	+/-	6.055
Ag	1.000	+/-	3.136
Bal	727971.125	+/-	1427.611
Nb	1.000	+/-	4.786
Zr	1.000	+/-	16.210
Y	1.000	+/-	3.385
Sr	682.829	+/-	9.642
Rb	1.000	+/-	10.889
Th	1.000	+/-	239.545
Bi	1.000	+/-	230.401
Au	1.000	+/-	6.592
As	417.030	+/-	37.760
Se	1.000	+/-	4.853
Pb	3038.942	+/-	41.196
Hg	1.000	+/-	3.077
Zn	382.841	+/-	16.335
Cu	429.310	+/-	21.853
Ni	1.000	+/-	24.907
Co	1.000	+/-	44.787
Fe	1926.008	+/-	76.086
Mn	1.000	+/-	91.616
Cr	223.410	+/-	25.901
V	1.000	+/-	91.487
Ti	542.115	+/-	366.236
Ca	46147.090	+/-	456.096
K	17831.547	+/-	299.974
Al	59044.961	+/-	2317.455
P	1.000	+/-	186.615
Si	107585.773	+/-	1339.599
Cl	2486.684	+/-	49.751
S	31128.164	+/-	304.915
Mg	1.000	+/-	7388.251

mRFA -Ergebnisse

XL3t-69288

Reading No 6
Mode Mining
Time 2017-04-27 10:41
Duration 121.21
Units ppm
Sigma Value 2
Sequence Final
Flags
INV NR Gm142
OBJEKT TAFELGEMAELENDE
MATERIAL HOLZ METALL FASSUNG
ANALYSESTELLE P6 NIMBUS
MESSAUFBAU STATIV ANLIEGEND
FILTER m30lo30hi30li30
User Login Raquet



	ppm	+/-	Error
Ce	-339.000	+/-	87.760
La	1.000	+/-	40.387
Ba	1.000	+/-	43.401
Sb	19.949	+/-	15.847
Sn	13.385	+/-	8.355
Cd	1.000	+/-	7.591
Ag	16.343	+/-	4.461
Bal	763772.000	+/-	1166.582
Nb	1.000	+/-	2.278
Zr	1.000	+/-	8.896
Y	1.000	+/-	1.793
Sr	377.026	+/-	6.656
Rb	22.339	+/-	5.568
Th	1.000	+/-	136.511
Bi	1.000	+/-	102.160
Au	3495.952	+/-	54.455
As	84.595	+/-	17.354
Se	1.000	+/-	6.534
Pb	574.475	+/-	15.595
Hg	1.000	+/-	4.566
Zn	109.032	+/-	14.198
Cu	211.730	+/-	17.581
Ni	1.000	+/-	24.140
Co	1.000	+/-	40.903
Fe	7044.586	+/-	135.252
Mn	1.000	+/-	58.677
Cr	123.846	+/-	23.444
V	1.000	+/-	44.166
Ti	1422.074	+/-	158.890
Ca	144280.016	+/-	886.348
K	2701.260	+/-	159.873
Al	12606.938	+/-	1278.405
P	33157.250	+/-	390.331
Si	18567.783	+/-	719.453
Cl	657.622	+/-	35.925
S	10741.883	+/-	131.461
Mg	1.000	+/-	9539.729

mRFA -Ergebnisse

XL3t-69288

Reading No 7
Mode Mining
Time 2017-04-27 10:45
Duration 121.09
Units ppm
Sigma Value 2
Sequence Final
Flags
INV NR Gm142
OBJEKT TAFELGEMAELENDE
MATERIAL HOLZ METALL FASSUNG
ANALYSESTELLE P7 KREUZSTANGE
MESSAUFBAU STATIV ANLIEGEND
FILTER m30lo30hi30li30
User Login Raquet



	ppm	+/-	Error
Ce	-339.000	+/-	91.698
La	1.000	+/-	42.247
Ba	1.000	+/-	45.405
Sb	1.000	+/-	16.699
Sn	1.000	+/-	9.914
Cd	11.057	+/-	6.300
Ag	617.290	+/-	16.355
Bal	801691.000	+/-	1139.959
Nb	22.158	+/-	10.395
Zr	1.000	+/-	37.443
Y	1.000	+/-	7.942
Sr	293.562	+/-	7.209
Rb	1.000	+/-	16.787
Th	1.000	+/-	548.876
Bi	1.000	+/-	689.572
Au	1.000	+/-	13.286
As	2736.478	+/-	92.749
Se	1.000	+/-	12.056
Pb	12011.271	+/-	169.185
Hg	1.000	+/-	7.462
Zn	130.466	+/-	11.678
Cu	447.737	+/-	25.407
Ni	1.000	+/-	37.308
Co	728.921	+/-	52.336
Fe	2593.639	+/-	99.260
Mn	1.000	+/-	92.577
Cr	1.000	+/-	35.983
V	1.000	+/-	44.594
Ti	372.633	+/-	214.827
Ca	98712.336	+/-	1197.670
K	5185.711	+/-	217.175
Al	6946.114	+/-	933.443
P	985.125	+/-	134.564
Si	45408.621	+/-	968.476
Cl	2673.454	+/-	57.110
S	18432.436	+/-	263.952
Mg	1.000	+/-	12379.533

mRFA -Ergebnisse

XL3t-69288

Reading No 8
Mode Mining
Time 2017-04-27 10:50
Duration 121.02
Units ppm
Sigma Value 2
Sequence Final
Flags
INV NR Gm142
OBJEKT TAFELGEMAELENDE
MATERIAL HOLZ METALL FASSUNG
ANALYSESTELLE P8 KRAGEN
MESSAUFBAU STATIV ANLIEGEND
FILTER m30lo30hi30li30
User Login Raquet



	ppm	+/-	Error
Ce	-339.000	+/-	143.524
La	1.000	+/-	65.553
Ba	1.000	+/-	69.978
Sb	1.000	+/-	28.761
Sn	640.896	+/-	28.363
Cd	9.098	+/-	9.065
Ag	1343.098	+/-	33.229
Bal	893481.375	+/-	973.582
Nb	51.487	+/-	26.121
Zr	1.000	+/-	85.708
Y	1.000	+/-	21.740
Sr	192.511	+/-	9.076
Rb	1.000	+/-	48.229
Th	1.000	+/-	1179.503
Bi	1.000	+/-	1037.284
Au	721.087	+/-	51.055
As	8779.501	+/-	233.585
Se	1.000	+/-	22.021
Pb	38456.496	+/-	637.798
Hg	1.000	+/-	18.118
Zn	156.934	+/-	17.574
Cu	2476.836	+/-	74.501
Ni	1.000	+/-	37.887
Co	38.467	+/-	34.966
Fe	967.835	+/-	82.118
Mn	1.000	+/-	98.020
Cr	56.395	+/-	23.108
V	1.000	+/-	21.286
Ti	1.000	+/-	110.782
Ca	9509.978	+/-	239.780
K	2014.708	+/-	237.780
Al	2307.844	+/-	588.847
P	9437.479	+/-	239.907
Si	9307.573	+/-	429.314
Cl	3176.930	+/-	73.699
S	16873.422	+/-	324.870
Mg	1.000	+/-	7217.394

mRFA -Ergebnisse

XL3t-69288

Reading No 9
Mode Mining
Time 2017-04-27 10:55
Duration 122.00
Units ppm
Sigma Value 2
Sequence Final
Flags
INV NR Gm142
OBJEKT TAFELGEMAELEN
MATERIAL HOLZ METALL FASSUNG
ANALYSESTELLE P9 KRAGEN
MESSAUFBAU STATIV ANLIEGEND
FILTER m30lo30hi30li30
User Login Raquet



	ppm	+/-	Error
Ce	-339.000	+/-	138.656
La	1.000	+/-	63.278
Ba	1.000	+/-	67.477
Sb	1.000	+/-	21.875
Sn	810.186	+/-	29.783
Cd	10.407	+/-	8.882
Ag	1177.346	+/-	29.562
Bal	882325.188	+/-	991.861
Nb	40.904	+/-	22.762
Zr	1.000	+/-	75.843
Y	1.000	+/-	19.235
Sr	277.226	+/-	10.008
Rb	1.000	+/-	44.937
Th	1.000	+/-	1053.761
Bi	1.000	+/-	1016.501
Au	578.682	+/-	45.842
As	8876.645	+/-	221.028
Se	15.962	+/-	14.469
Pb	33343.457	+/-	542.816
Hg	1.000	+/-	16.366
Zn	127.991	+/-	15.542
Cu	2141.689	+/-	66.516
Ni	1.000	+/-	46.642
Co	1.000	+/-	44.541
Fe	1054.036	+/-	81.901
Mn	1.000	+/-	107.972
Cr	55.222	+/-	23.794
V	1.000	+/-	22.592
Ti	1.000	+/-	116.887
Ca	9268.925	+/-	235.562
K	3354.860	+/-	260.865
Al	3050.785	+/-	694.598
P	12401.459	+/-	300.232
Si	14320.274	+/-	562.817
Cl	3880.260	+/-	87.383
S	22888.486	+/-	426.653
Mg	1.000	+/-	6633.834

mRFA -Ergebnisse

XL3t-69288

Reading No 10
Mode Mining
Time 2017-04-27 10:58
Duration 121.66
Units ppm
Sigma Value 2
Sequence Final
Flags
INV NR Gm142
OBJEKT TAFELGEMAELENDE
MATERIAL HOLZ METALL FASSUNG
ANALYSESTELLE P10 MANTEL
MESSAUFBAU STATIV ANLIEGEND
FILTER m30lo30hi30li30
User Login Raquet

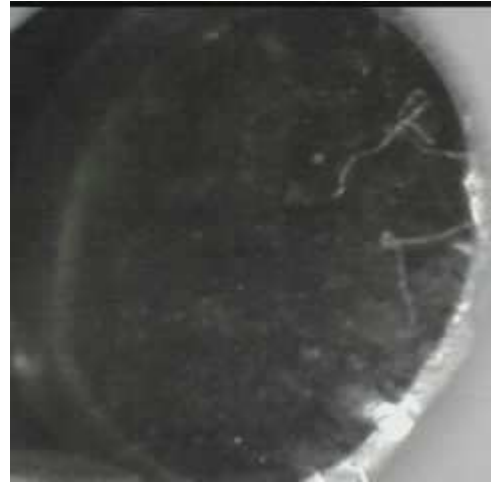


	ppm	+/-	Error
Ce	-339.000	+/-	83.553
La	1.000	+/-	38.267
Ba	1.000	+/-	41.132
Sb	1.000	+/-	19.463
Sn	1.000	+/-	11.732
Cd	12.545	+/-	5.796
Ag	18.954	+/-	4.298
Bal	751955.313	+/-	1222.054
Nb	1.000	+/-	1.987
Zr	1.000	+/-	7.585
Y	2.852	+/-	2.157
Sr	362.411	+/-	6.488
Rb	34.840	+/-	5.968
Th	1.000	+/-	145.318
Bi	1.000	+/-	87.227
Au	5712.866	+/-	71.821
As	1.000	+/-	9.219
Se	1.000	+/-	7.846
Pb	149.447	+/-	8.589
Hg	10.508	+/-	6.242
Zn	156.458	+/-	16.795
Cu	156.087	+/-	15.889
Ni	1.000	+/-	23.986
Co	1.000	+/-	51.333
Fe	13231.595	+/-	184.306
Mn	1.000	+/-	78.965
Cr	170.112	+/-	26.212
V	1.000	+/-	47.957
Ti	1943.917	+/-	174.561
Ca	91042.414	+/-	640.384
K	2975.250	+/-	165.733
Al	17779.227	+/-	1391.965
P	69248.617	+/-	575.435
Si	25642.324	+/-	824.893
Cl	310.462	+/-	31.182
S	19083.779	+/-	183.493
Mg	1.000	+/-	9696.580

mRFA -Ergebnisse

XL3t-69288

Reading No 11
Mode Mining
Time 2017-04-27 11:04
Duration 120.91
Units ppm
Sigma Value 2
Sequence Final
Flags
INV NR Gm142
OBJEKT TAFELGEMAELEN
MATERIAL HOLZ METALL FASSUNG
ANALYSESTELLE P11 MANTEL SCHWARZZEICHNUNG
MESSAUFBAU STATIV ANLIEGEND
FILTER m30lo30hi30li30
User Login Raquet

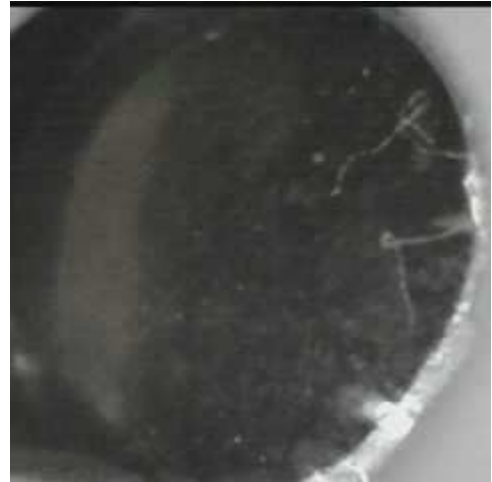


	ppm	+/-	Error
Ce	-339.000	+/-	80.323
La	1.000	+/-	36.718
Ba	1.000	+/-	39.592
Sb	1.000	+/-	13.549
Sn	10.469	+/-	7.604
Cd	6.544	+/-	5.488
Ag	16.177	+/-	4.103
Bal	796292.438	+/-	1002.510
Nb	1.000	+/-	2.626
Zr	1.000	+/-	10.585
Y	1.000	+/-	2.304
Sr	337.688	+/-	6.130
Rb	23.310	+/-	6.086
Th	1.000	+/-	176.113
Bi	1.000	+/-	122.330
Au	3565.300	+/-	54.017
As	231.767	+/-	22.996
Se	1.000	+/-	6.617
Pb	1069.883	+/-	21.042
Hg	1.000	+/-	4.688
Zn	105.007	+/-	13.861
Cu	658.135	+/-	25.148
Ni	1.000	+/-	22.959
Co	1.000	+/-	44.432
Fe	9832.296	+/-	157.054
Mn	69.381	+/-	57.958
Cr	114.720	+/-	22.915
V	41.364	+/-	26.350
Ti	1423.966	+/-	153.396
Ca	102783.195	+/-	702.507
K	6174.416	+/-	198.424
Al	8265.092	+/-	983.707
P	15891.679	+/-	263.770
Si	40917.578	+/-	861.974
Cl	1199.124	+/-	38.192
S	10970.454	+/-	128.434
Mg	1.000	+/-	7265.616

mRFA -Ergebnisse

XL3t-69288

Reading No 12
Mode Mining
Time 2017-04-27 11:09
Duration 121.86
Units ppm
Sigma Value 2
Sequence Final
Flags
INV NR Gm142
OBJEKT TAFELGEMAELEN
MATERIAL HOLZ METALL FASSUNG
ANALYSESTELLE P12 MANTEL FUTTER ROTLACK
MESSAUFBAU STATIV ANLIEGEND
FILTER m30lo30hi30li30
User Login Raquet



	ppm	+/-	Error
Ce	-339.000	+/-	160.428
La	1.000	+/-	73.146
Ba	1.000	+/-	77.853
Sb	1.000	+/-	25.296
Sn	1.000	+/-	20.131
Cd	1.000	+/-	14.002
Ag	1.000	+/-	7.051
Bal	863346.688	+/-	1407.822
Nb	64.927	+/-	36.800
Zr	1.000	+/-	115.816
Y	1.000	+/-	30.124
Sr	178.872	+/-	10.487
Rb	1.000	+/-	70.266
Th	1.000	+/-	1707.097
Bi	1.000	+/-	1210.579
Au	1.000	+/-	36.637
As	10633.095	+/-	300.850
Se	1.000	+/-	26.298
Pb	55384.234	+/-	987.925
Hg	1.000	+/-	20.642
Zn	136.463	+/-	15.244
Cu	880.533	+/-	45.364
Ni	1.000	+/-	40.017
Co	56.214	+/-	36.647
Fe	686.578	+/-	81.590
Mn	228.475	+/-	88.866
Cr	33.335	+/-	25.747
V	1.000	+/-	33.074
Ti	1.000	+/-	159.857
Ca	21533.885	+/-	449.292
K	9341.485	+/-	320.099
Al	9144.894	+/-	762.059
P	1139.241	+/-	99.014
Si	11356.800	+/-	438.750
Cl	2372.004	+/-	60.584
S	13482.289	+/-	279.169
Mg	1.000	+/-	5621.067

mRFA -Ergebnisse

XL3t-69288

Reading No 13
Mode Mining
Time 2017-04-27 11:18
Duration 120.47
Units ppm
Sigma Value 2
Sequence Final
Flags
INV NR Gm142
OBJEKT TAFELGEMAELEN
MATERIAL HOLZ METALL FASSUNG
ANALYSESTELLE P13 PUTTO
MESSAUFBAU STATIV ANLIEGEND
FILTER m30lo30hi30li30
User Login Raquet



	ppm	+/-	Error
Ce	-339.000	+/-	90.351
La	1.000	+/-	41.999
Ba	1.000	+/-	45.138
Sb	1.000	+/-	15.472
Sn	1.000	+/-	10.448
Cd	7.326	+/-	6.290
Ag	687.251	+/-	17.250
Bal	744859.250	+/-	1321.594
Nb	1.000	+/-	2.335
Zr	1.000	+/-	9.122
Y	1.000	+/-	1.960
Sr	391.786	+/-	6.873
Rb	1.000	+/-	5.223
Th	1.000	+/-	134.347
Bi	1.000	+/-	115.173
Au	1.000	+/-	7.637
As	180.402	+/-	21.129
Se	1.000	+/-	2.999
Pb	798.746	+/-	18.714
Hg	18.899	+/-	3.726
Zn	59.785	+/-	9.049
Cu	487.269	+/-	23.824
Ni	1.000	+/-	24.859
Co	1.000	+/-	37.266
Fe	5440.046	+/-	122.774
Mn	1.000	+/-	59.799
Cr	46.037	+/-	22.985
V	44.764	+/-	28.045
Ti	1198.427	+/-	159.332
Ca	167298.188	+/-	1012.631
K	3412.561	+/-	209.417
Al	15159.468	+/-	1504.071
P	291.529	+/-	125.468
Si	29618.482	+/-	814.705
Cl	4297.618	+/-	69.508
S	6127.057	+/-	101.518
Mg	19575.170	+/-	11318.720

mRFA -Ergebnisse

XL3t-69288

Reading No 14
Mode Mining
Time 2017-04-27 11:23
Duration 120.39
Units ppm
Sigma Value 2
Sequence Final
Flags
INV NR Gm142
OBJEKT TAFELGEMAELENDE
MATERIAL HOLZ METALL FASSUNG
ANALYSESTELLE P14 GEWAND MARGARETHE
MESSAUFBAU STATIV ANLIEGEND
FILTER m30lo30hi30li30
User Login Raquet



	ppm	+/-	Error
Ce	-339.000	+/-	224.289
La	1.000	+/-	106.376
Ba	1.000	+/-	128.503
Sb	1.000	+/-	46.791
Sn	30.258	+/-	15.946
Cd	1.000	+/-	9.921
Ag	1.000	+/-	6.361
Bal	819483.938	+/-	1841.227
Nb	40.942	+/-	33.943
Zr	1.000	+/-	112.466
Y	1.000	+/-	28.959
Sr	190.051	+/-	10.902
Rb	1.000	+/-	58.716
Th	1.000	+/-	1557.944
Bi	1.000	+/-	1215.503
Au	1.000	+/-	36.624
As	7509.485	+/-	275.205
Se	1.000	+/-	19.263
Pb	46939.895	+/-	878.774
Hg	1.000	+/-	21.253
Zn	168.924	+/-	38.680
Cu	51112.379	+/-	852.174
Ni	1.000	+/-	49.630
Co	57.375	+/-	36.054
Fe	491.638	+/-	69.038
Mn	129.187	+/-	79.742
Cr	1.000	+/-	24.299
V	1.000	+/-	22.685
Ti	1.000	+/-	116.687
Ca	35303.375	+/-	596.320
K	4415.665	+/-	219.405
Al	1853.422	+/-	724.916
P	593.403	+/-	108.763
Si	15277.979	+/-	546.387
Cl	1520.405	+/-	45.572
S	14881.666	+/-	269.966
Mg	1.000	+/-	11929.068