

mRFA -Ergebnisse

XL3t-69288

Reading No 1  
Mode Mining  
Time 2017-05-08 14:15  
Duration 121.29  
Units ppm  
Sigma Value 2  
Sequence Final  
Flags  
INV NR **Gm1280**  
OBJEKT TAFELGEMAELENDE  
MATERIAL HOLZ METALL FASSUNG  
ANALYSESTELLE P1 NIMBUS  
MESSAUFBAU STATIV ANLIEGEND  
FILTER m30lo30hi30li30  
User Login Raquet



	ppm	+/-	Error
Ce	-339.000	+/-	144.349
La	1.000	+/-	66.036
Ba	1.000	+/-	70.370
Sb	1.000	+/-	23.037
Sn	1251.464	+/-	36.190
Cd	16.762	+/-	9.408
Ag	17.123	+/-	6.432
Bal	881456.000	+/-	1088.103
Nb	45.840	+/-	29.125
Zr	1.000	+/-	94.485
Y	1.000	+/-	23.903
Sr	81.924	+/-	7.527
Rb	1.000	+/-	62.573
Th	1.000	+/-	1396.039
Bi	1.000	+/-	994.506
Au	1763.096	+/-	71.648
As	9683.846	+/-	255.236
Se	1.000	+/-	16.020
Pb	43065.129	+/-	734.869
Hg	1.000	+/-	23.240
Zn	170.335	+/-	19.105
Cu	931.171	+/-	43.721
Ni	1.000	+/-	37.205
Co	1.000	+/-	42.260
Fe	1227.801	+/-	90.538
Mn	1.000	+/-	109.961
Cr	41.631	+/-	20.931
V	1.000	+/-	17.288
Ti	1.000	+/-	82.195
Ca	3663.679	+/-	151.932
K	966.273	+/-	137.842
Al	1402.999	+/-	546.873
P	21663.361	+/-	459.336
Si	7097.854	+/-	407.096
Cl	2871.754	+/-	69.311
S	22581.980	+/-	443.704
Mg	1.000	+/-	5940.230

mRFA -Ergebnisse

XL3t-69288

Reading No 2  
Mode Mining  
Time 2017-05-08 14:19  
Duration 120.29  
Units ppm  
Sigma Value 2  
Sequence Final  
Flags  
INV NR **Gm1280**  
OBJEKT TAFELGEMAELEN  
MATERIAL HOLZ METALL FASSUNG  
ANALYSESTELLE P2 SCHWARZZEICHNUNG  
MESSAUFBAU STATIV ANLIEGEND  
FILTER m30lo30hi30li30  
User Login Raquet



	ppm	+/-	Error
Ce	-339.000	+/-	158.937
La	1.000	+/-	72.626
Ba	1.000	+/-	76.960
Sb	1.000	+/-	24.684
Sn	1282.305	+/-	39.032
Cd	1.000	+/-	14.713
Ag	16.750	+/-	6.912
Bal	851572.750	+/-	1444.975
Nb	58.333	+/-	33.714
Zr	1.000	+/-	107.946
Y	1.000	+/-	27.648
Sr	125.883	+/-	9.282
Rb	1.000	+/-	75.022
Th	1.000	+/-	1503.954
Bi	1.000	+/-	1130.988
Au	1818.241	+/-	78.277
As	10808.226	+/-	289.290
Se	1.000	+/-	22.729
Pb	49167.133	+/-	870.573
Hg	1.000	+/-	25.412
Zn	166.490	+/-	20.238
Cu	1334.832	+/-	55.333
Ni	1.000	+/-	40.764
Co	46.978	+/-	40.459
Fe	1377.310	+/-	100.561
Mn	134.211	+/-	85.810
Cr	58.009	+/-	24.172
V	1.000	+/-	25.206
Ti	1.000	+/-	106.763
Ca	8365.913	+/-	234.661
K	2032.712	+/-	174.245
Al	3413.348	+/-	689.434
P	17205.230	+/-	392.149
Si	18334.840	+/-	631.278
Cl	4420.574	+/-	100.954
S	28259.988	+/-	554.722
Mg	1.000	+/-	8958.057

mRFA -Ergebnisse

XL3t-69288

Reading No 3  
Mode Mining  
Time 2017-05-08 14:23  
Duration 121.42  
Units ppm  
Sigma Value 2  
Sequence Final  
Flags  
INV NR **Gm1280**  
OBJEKT TAFELGEMAELEN  
MATERIAL HOLZ METALL FASSUNG  
ANALYSESTELLE P3 SCHWARZZEICHNUNG GOLD  
MESSAUFBAU STATIV ANLIEGEND  
FILTER m30lo30hi30li30  
User Login Raquet



	ppm	+/-	Error
Ce	-339.000	+/-	153.869
La	1.000	+/-	70.252
Ba	1.000	+/-	77.092
Sb	1.000	+/-	37.376
<b>Sn</b>	<b>1933.896</b>	<b>+/-</b>	<b>51.322</b>
Cd	39.139	+/-	10.840
<b>Ag</b>	<b>26.784</b>	<b>+/-</b>	<b>7.282</b>
Bal	872275.000	+/-	1290.202
Nb	49.636	+/-	34.969
Zr	1.000	+/-	111.374
Y	1.000	+/-	28.623
Sr	66.215	+/-	8.363
Rb	1.000	+/-	93.616
Th	1.000	+/-	1886.969
Bi	1.000	+/-	1157.582
<b>Au</b>	<b>2795.684</b>	<b>+/-</b>	<b>96.292</b>
As	10951.730	+/-	305.352
Se	1.000	+/-	18.050
<b>Pb</b>	<b>51412.199</b>	<b>+/-</b>	<b>964.395</b>
Hg	1.000	+/-	27.653
Zn	196.033	+/-	22.427
<b>Cu</b>	<b>1403.494</b>	<b>+/-</b>	<b>57.498</b>
Ni	1.000	+/-	48.148
Co	1.000	+/-	54.893
<b>Fe</b>	<b>1304.440</b>	<b>+/-</b>	<b>98.484</b>
Mn	171.744	+/-	84.664
Cr	62.924	+/-	22.704
V	1.000	+/-	17.967
Ti	1.000	+/-	92.540
Ca	6246.562	+/-	194.459
K	2189.904	+/-	165.680
Al	2365.096	+/-	583.730
P	13349.411	+/-	339.157
Si	10089.736	+/-	457.405
Cl	3042.167	+/-	79.162
S	20028.170	+/-	442.675
Mg	1.000	+/-	5548.862

mRFA -Ergebnisse

XL3t-69288

Reading No 4  
Mode Mining  
Time 2017-05-08 14:27  
Duration 121.21  
Units ppm  
Sigma Value 2  
Sequence Final  
Flags  
INV NR **Gm1280**  
OBJEKT TAFELGEMAELEN  
MATERIAL HOLZ METALL FASSUNG  
ANALYSESTELLE P4 SCHWARZZEICHNUNG GOLD  
MESSAUFBAU STATIV ANLIEGEND  
FILTER m30lo30hi30li30  
User Login Raquet



	ppm	+/-	Error
Ce	-339.000	+/-	152.614
La	1.000	+/-	69.746
Ba	1.000	+/-	73.966
Sb	1.000	+/-	30.950
Sn	1876.565	+/-	50.355
Cd	27.444	+/-	10.385
Ag	24.630	+/-	7.141
Bal	872041.313	+/-	1323.501
Nb	60.696	+/-	36.233
Zr	1.000	+/-	114.912
Y	1.000	+/-	29.614
Sr	58.162	+/-	8.325
Rb	1.000	+/-	81.385
Th	1.000	+/-	1701.982
Bi	1.000	+/-	1192.175
Au	2406.471	+/-	89.916
As	11194.977	+/-	303.399
Se	1.000	+/-	17.871
Pb	53186.742	+/-	954.485
Hg	1.000	+/-	27.849
Zn	180.950	+/-	21.675
Cu	1389.327	+/-	56.856
Ni	1.000	+/-	40.709
Co	1.000	+/-	60.356
Fe	1410.475	+/-	101.874
Mn	157.905	+/-	84.454
Cr	37.757	+/-	25.210
V	1.000	+/-	20.554
Ti	1.000	+/-	107.894
Ca	6431.662	+/-	203.522
K	3011.016	+/-	196.125
Al	4309.759	+/-	630.723
P	7638.358	+/-	217.088
Si	10366.474	+/-	439.879
Cl	3763.285	+/-	89.075
S	20426.035	+/-	420.752
Mg	1.000	+/-	5797.141

mRFA -Ergebnisse

XL3t-69288

Reading No 5  
Mode Mining  
Time 2017-05-08 14:32  
Duration 121.81  
Units ppm  
Sigma Value 2  
Sequence Final  
Flags  
INV NR **Gm1280**  
OBJEKT TAFELGEMAELEN  
MATERIAL HOLZ METALL FASSUNG  
ANALYSESTELLE P5 HALTBORTE  
MESSAUFBAU STATIV ANLIEGEND  
FILTER m30lo30hi30li30  
User Login Raquet



	ppm	+/-	Error
Ce	-339.000	+/-	143.211
La	1.000	+/-	65.200
Ba	1.000	+/-	78.227
Sb	1.000	+/-	31.411
<b>Sn</b>	<b>1204.948</b>	<b>+/-</b>	<b>34.883</b>
Cd	25.069	+/-	9.553
<b>Ag</b>	<b>21.021</b>	<b>+/-</b>	<b>6.536</b>
Bal	895580.125	+/-	938.416
Nb	45.324	+/-	26.205
Zr	1.000	+/-	85.839
Y	1.000	+/-	21.691
Sr	95.208	+/-	7.329
Rb	1.000	+/-	66.490
Th	1.000	+/-	1177.207
Bi	1.000	+/-	908.802
<b>Au</b>	<b>2491.532</b>	<b>+/-</b>	<b>79.148</b>
As	9018.264	+/-	229.591
Se	1.000	+/-	15.700
<b>Pb</b>	<b>39143.723</b>	<b>+/-</b>	<b>625.023</b>
Hg	1.000	+/-	21.782
Zn	196.027	+/-	20.114
<b>Cu</b>	<b>1091.648</b>	<b>+/-</b>	<b>45.614</b>
Ni	1.000	+/-	35.407
Co	1.000	+/-	43.751
<b>Fe</b>	<b>1254.906</b>	<b>+/-</b>	<b>88.349</b>
Mn	1.000	+/-	111.751
Cr	55.382	+/-	20.916
V	1.000	+/-	17.800
Ti	1.000	+/-	83.868
Ca	7548.643	+/-	194.839
K	1826.423	+/-	146.957
Al	1079.360	+/-	491.381
P	13818.637	+/-	297.331
Si	7120.752	+/-	374.983
Cl	2735.559	+/-	62.003
S	15647.405	+/-	287.926
Mg	1.000	+/-	5395.182

mRFA -Ergebnisse

XL3t-69288

Reading No 6  
Mode Mining  
Time 2017-05-08 14:37  
Duration 121.52  
Units ppm  
Sigma Value 2  
Sequence Final  
Flags  
INV NR **Gm1280**  
OBJEKT TAFELGEMAELENDE  
MATERIAL HOLZ METALL FASSUNG  
ANALYSESTELLE P6 GEWANDMUSTER  
MESSAUFBAU STATIV ANLIEGEND  
FILTER m30lo30hi30li30  
User Login Raquet



	ppm	+/-	Error
Ce	-339.000	+/-	144.710
La	1.000	+/-	65.865
Ba	1.000	+/-	70.200
Sb	1.000	+/-	22.660
Sn	1485.241	+/-	40.870
Cd	19.402	+/-	9.571
Ag	23.018	+/-	6.729
Bal	885003.875	+/-	1112.978
Nb	47.624	+/-	31.154
Zr	1.000	+/-	100.484
Y	1.000	+/-	25.591
Sr	63.754	+/-	7.569
Rb	1.000	+/-	78.698
Th	1.000	+/-	1569.206
Bi	1.000	+/-	1055.341
Au	2624.971	+/-	88.242
As	9979.152	+/-	270.473
Se	1.000	+/-	17.191
Pb	46036.090	+/-	807.395
Hg	1.000	+/-	24.892
Zn	194.196	+/-	21.530
Cu	1630.089	+/-	60.044
Ni	1.000	+/-	42.909
Co	1.000	+/-	42.458
Fe	2600.920	+/-	126.389
Mn	1.000	+/-	109.421
Cr	43.992	+/-	23.972
V	1.000	+/-	24.767
Ti	1.000	+/-	91.443
Ca	12019.695	+/-	286.593
K	2412.556	+/-	173.176
Al	1699.426	+/-	503.395
P	5457.375	+/-	169.305
Si	7902.243	+/-	368.342
Cl	4097.199	+/-	92.171
S	16659.180	+/-	336.342
Mg	1.000	+/-	5243.355

mRFA -Ergebnisse

XL3t-69288

Reading No 7  
Mode Mining  
Time 2017-05-08 14:41  
Duration 120.65  
Units ppm  
Sigma Value 2  
Sequence Final  
Flags  
INV NR **Gm1280**  
OBJEKT TAFELGEMAELEN  
MATERIAL HOLZ METALL FASSUNG  
ANALYSESTELLE P7 UNTERGEWAND  
MESSAUFBAU STATIV ANLIEGEND  
FILTER m30lo30hi30li30  
User Login Raquet

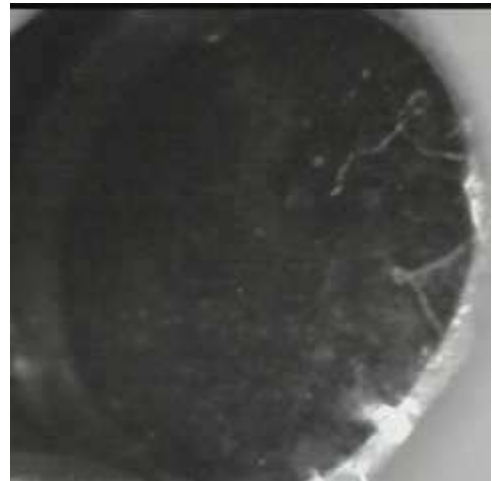


	ppm	+/-	Error
Ce	-339.000	+/-	137.701
La	1.000	+/-	62.808
Ba	1.000	+/-	66.699
Sb	1.000	+/-	30.678
<b>Sn</b>	<b>56.075</b>	<b>+/-</b>	<b>12.873</b>
Cd	10.103	+/-	8.491
<b>Ag</b>	<b>1.000</b>	<b>+/-</b>	<b>4.743</b>
Bal	877039.875	+/-	1145.681
Nb	51.023	+/-	31.830
Zr	1.000	+/-	101.926
Y	1.000	+/-	25.768
Sr	116.689	+/-	8.375
Rb	1.000	+/-	66.834
Th	1.000	+/-	1705.535
Bi	1.000	+/-	1070.273
<b>Au</b>	<b>1.000</b>	<b>+/-</b>	<b>33.869</b>
As	10557.485	+/-	285.667
Se	1.000	+/-	19.900
<b>Pb</b>	<b>48238.336</b>	<b>+/-</b>	<b>868.731</b>
Hg	1.000	+/-	20.803
Zn	114.438	+/-	14.402
<b>Cu</b>	<b>1778.102</b>	<b>+/-</b>	<b>63.333</b>
Ni	1.000	+/-	42.982
Co	1.000	+/-	50.969
<b>Fe</b>	<b>1052.121</b>	<b>+/-</b>	<b>86.722</b>
Mn	94.384	+/-	76.718
Cr	1.000	+/-	29.979
V	1.000	+/-	17.235
Ti	1.000	+/-	91.180
Ca	9086.953	+/-	228.457
K	2105.923	+/-	149.741
Al	3002.973	+/-	587.804
P	1930.041	+/-	130.902
Si	13228.106	+/-	493.137
Cl	4201.274	+/-	100.180
S	27336.125	+/-	571.400
Mg	1.000	+/-	5941.259

mRFA -Ergebnisse

XL3t-69288

Reading No 8  
Mode Mining  
Time 2017-05-08 14:45  
Duration 120.21  
Units ppm  
Sigma Value 2  
Sequence Final  
Flags  
INV NR **Gm1280**  
OBJEKT TAFELGEMAELEN  
MATERIAL HOLZ METALL FASSUNG  
ANALYSESTELLE P8 MANTEL ROTLACK  
MESSAUFBAU STATIV ANLIEGEND  
FILTER m30lo30hi30li30  
User Login Raquet



	ppm	+/-	Error
Ce	-339.000	+/-	85.118
La	1.000	+/-	39.116
Ba	1.000	+/-	41.813
Sb	1.000	+/-	20.108
Sn	18.057	+/-	7.931
Cd	12.085	+/-	5.753
Ag	4.293	+/-	3.705
Bal	892314.500	+/-	741.522
Nb	25.347	+/-	13.272
Zr	1.000	+/-	46.159
Y	1.000	+/-	11.119
Sr	117.508	+/-	5.619
Rb	1.000	+/-	23.824
Th	1.000	+/-	658.251
Bi	1.000	+/-	615.368
Au	1.000	+/-	22.376
As	4913.998	+/-	127.263
Se	1.000	+/-	13.500
Pb	19140.668	+/-	263.268
Hg	536.133	+/-	20.705
Zn	118.030	+/-	13.364
Cu	763.659	+/-	32.070
Ni	1.000	+/-	25.996
Co	1.000	+/-	24.658
Fe	976.943	+/-	67.371
Mn	270.162	+/-	66.353
Cr	1.000	+/-	22.041
V	1.000	+/-	14.208
Ti	1.000	+/-	94.732
Ca	15529.385	+/-	273.859
K	6796.906	+/-	214.734
Al	27773.945	+/-	1093.832
P	6319.043	+/-	159.504
Si	8006.796	+/-	346.812
Cl	2633.406	+/-	51.994
S	13729.172	+/-	217.639
Mg	1.000	+/-	4487.520