

## Certificate of Verification

XL3t-69288

Reading No 1  
Mode Mining  
Time 2016-10-11 14:19  
Duration 120.50  
Units ppm  
Sigma Value 2  
Sequence Final  
Flags  
INV NR Gm114  
OBJEKT TAFELGEMAELEN  
MATERIAL HOLZ METALL FASSUN  
ANALYSESTELLE P1 KRONE  
MESSAUFBAU STATIV ANLIEGEND  
FILTER m30lo30hi30li30  
User Login Raquet



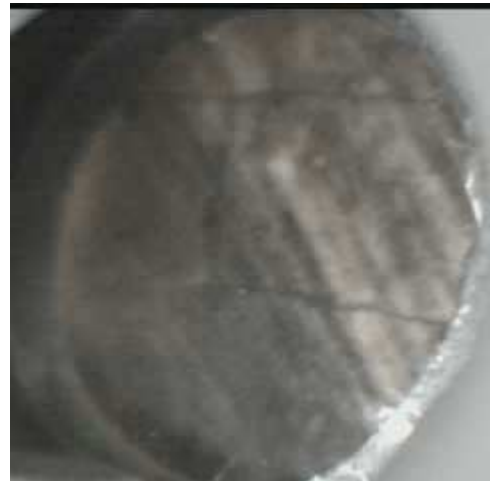
	ppm	+/-	Error
Ce	-339.000	+/-	71.225
La	1.000	+/-	32.464
Ba	1.000	+/-	35.157
Sb	1.000	+/-	12.010
Sn	1.000	+/-	8.450
Cd	9.657	+/-	4.967
Ag	7.214	+/-	3.360
Bal	820063.688	+/-	830.332
Nb	1.000	+/-	1.776
Zr	1.000	+/-	6.893
Y	1.000	+/-	1.276
Sr	264.868	+/-	5.000
Rb	21.555	+/-	4.597
Th	1.000	+/-	103.620
Bi	1.000	+/-	88.349
Au	2987.629	+/-	45.488
As	92.781	+/-	13.502
Se	1.000	+/-	5.532
Pb	371.874	+/-	11.592
Hg	1.000	+/-	4.178
Zn	158.666	+/-	13.457
Cu	114.902	+/-	13.418
Ni	1.000	+/-	20.361
Co	1.000	+/-	22.234
Fe	1709.943	+/-	65.227
Mn	1.000	+/-	52.139
Cr	81.857	+/-	19.826
V	1.000	+/-	28.356
Ti	1.000	+/-	160.991
Ca	145731.547	+/-	816.633
K	1361.564	+/-	126.759
Al	2201.016	+/-	764.774
P	12362.935	+/-	229.369
Si	3900.616	+/-	398.035
Cl	1403.763	+/-	38.337
S	7153.949	+/-	98.329
Mg	1.000	+/-	6745.197

Supervised By: \_\_\_\_\_

## Certificate of Verification

XL3t-69288

Reading No 2  
Mode Mining  
Time 2016-10-11 14:23  
Duration 121.30  
Units ppm  
Sigma Value 2  
Sequence Final  
Flags  
INV NR Gm114  
OBJEKT TAFELGEMAELEN  
MATERIAL HOLZ METALL FASSUN  
ANALYSESTELLE P2 SCHWERTKLINGE  
MESSAUFBAU STATIV ANLIEGEND  
FILTER m30lo30hi30li30  
User Login Raquet



	ppm	+/-	Error
Ce	-339.000	+/-	192.431
La	1.000	+/-	115.577
Ba	1.000	+/-	142.642
Sb	1.000	+/-	30.081
Sn	1.000	+/-	24.273
Cd	1.000	+/-	13.650
Ag	2101.946	+/-	56.769
Bal	838514.375	+/-	1915.574
Nb	176.629	+/-	45.538
Zr	1.000	+/-	138.863
Y	1.000	+/-	36.993
Sr	175.254	+/-	12.257
Rb	1.000	+/-	74.149
Th	1.000	+/-	1852.729
Bi	1.000	+/-	1952.649
Au	234.546	+/-	60.148
As	11672.737	+/-	356.071
Se	51.966	+/-	37.118
Pb	70503.500	+/-	1345.141
Hg	1.000	+/-	26.018
Zn	1101.294	+/-	46.266
Cu	265.336	+/-	31.648
Ni	1.000	+/-	59.080
Co	63.981	+/-	44.405
Fe	1198.446	+/-	106.202
Mn	228.915	+/-	99.361
Cr	33.545	+/-	28.832
V	1.000	+/-	34.128
Ti	1.000	+/-	133.187
Ca	28543.615	+/-	604.845
K	1395.038	+/-	174.896
Al	5713.075	+/-	762.782
P	3739.367	+/-	161.388
Si	7853.843	+/-	401.583
Cl	3234.770	+/-	82.658
S	23197.746	+/-	498.307
Mg	1.000	+/-	6876.554

Supervised By: \_\_\_\_\_

## Certificate of Verification

XL3t-69288

Reading No 3  
Mode Mining  
Time 2016-10-11 14:27  
Duration 122.00  
Units ppm  
Sigma Value 2  
Sequence Final  
Flags  
INV NR Gm114  
OBJEKT TAFELGEMAELEN  
MATERIAL HOLZ METALL FASSUN  
ANALYSESTELLE P3 SCHWERTKNAUF  
MESSAUFBAU STATIV ANLIEGEND  
FILTER m30lo30hi30li30  
User Login Raquet



	ppm	+/-	Error
Ce	351.949	+/-	249.338
La	296.301	+/-	113.108
Ba	272.724	+/-	118.748
Sb	1.000	+/-	58.686
Sn	1.000	+/-	38.856
Cd	1.000	+/-	13.448
Ag	1309.209	+/-	49.343
Bal	823948.688	+/-	2649.347
Nb	265.198	+/-	66.447
Zr	1.000	+/-	194.446
Y	1.000	+/-	52.981
Sr	127.932	+/-	14.716
Rb	1.000	+/-	106.994
Th	1.000	+/-	2515.803
Bi	1.000	+/-	2467.232
Au	1.000	+/-	60.985
As	13170.334	+/-	451.761
Se	56.591	+/-	40.422
Pb	99454.250	+/-	2107.074
Hg	1.000	+/-	33.183
Zn	6079.106	+/-	156.632
Cu	270.027	+/-	36.327
Ni	62.225	+/-	55.094
Co	98.048	+/-	56.159
Fe	2066.577	+/-	142.602
Mn	313.279	+/-	113.488
Cr	1.000	+/-	45.114
V	1.000	+/-	32.903
Ti	1.000	+/-	144.949
Ca	16976.691	+/-	413.393
K	970.733	+/-	161.231
Al	4606.333	+/-	721.982
P	2195.856	+/-	126.945
Si	5192.019	+/-	323.821
Cl	2622.350	+/-	73.712
S	18953.596	+/-	439.227
Mg	1.000	+/-	6803.065

Supervised By: \_\_\_\_\_

## Certificate of Verification

XL3t-69288

Reading No 4  
Mode Mining  
Time 2016-10-11 14:30  
Duration 120.69  
Units ppm  
Sigma Value 2  
Sequence Final  
Flags  
INV NR Gm114  
OBJEKT TAFELGEMAELEN  
MATERIAL HOLZ METALL FASSUN  
ANALYSESTELLE P4 KETTELHEMD  
MESSAUFBAU STATIV ANLIEGEND  
FILTER m30lo30hi30li30  
User Login Raquet



	ppm	+/-	Error
Ce	-339.000	+/-	72.090
La	1.000	+/-	33.290
Ba	1.000	+/-	35.967
Sb	1.000	+/-	12.340
Sn	1.000	+/-	7.757
Cd	12.886	+/-	5.192
Ag	534.391	+/-	12.516
Bal	819736.313	+/-	850.757
Nb	1.000	+/-	1.921
Zr	1.000	+/-	7.535
Y	1.000	+/-	1.518
Sr	266.877	+/-	5.083
Rb	1.000	+/-	3.641
Th	1.000	+/-	112.859
Bi	1.000	+/-	103.390
Au	9.128	+/-	6.505
As	246.649	+/-	19.525
Se	1.000	+/-	2.434
Pb	765.478	+/-	16.755
Hg	1.000	+/-	2.311
Zn	196.205	+/-	11.817
Cu	501.919	+/-	21.780
Ni	1.000	+/-	20.951
Co	1.000	+/-	17.473
Fe	450.654	+/-	43.241
Mn	1.000	+/-	50.459
Cr	25.000	+/-	18.183
V	1.000	+/-	16.850
Ti	1.000	+/-	130.808
Ca	161294.875	+/-	915.602
K	1546.064	+/-	165.686
Al	2006.656	+/-	822.477
P	1409.601	+/-	126.064
Si	3222.610	+/-	353.344
Cl	2367.981	+/-	50.212
S	5406.680	+/-	90.250
Mg	1.000	+/-	10182.614

Supervised By: \_\_\_\_\_

## Certificate of Verification

XL3t-69288

Reading No 5  
Mode Mining  
Time 2016-10-11 14:36  
Duration 121.58  
Units ppm  
Sigma Value 2  
Sequence Final  
Flags  
INV NR Gm114  
OBJEKT TAFELGEMAELEN  
MATERIAL HOLZ METALL FASSUN  
ANALYSESTELLE P5 LANKENSPITZE  
MESSAUFBAU STATIV ANLIEGEND  
FILTER m30lo30hi30li30  
User Login Raquet



	ppm	+/-	Error
Ce	-339.000	+/-	81.177
La	1.000	+/-	37.426
Ba	1.000	+/-	40.366
Sb	18.824	+/-	14.933
Sn	1.000	+/-	10.302
Cd	17.601	+/-	6.064
Ag	915.046	+/-	19.775
Bal	764595.938	+/-	1162.211
Nb	8.541	+/-	3.866
Zr	1.000	+/-	15.461
Y	1.000	+/-	2.832
Sr	361.968	+/-	6.652
Rb	1.000	+/-	7.742
Th	1.000	+/-	192.929
Bi	1.000	+/-	195.482
Au	96.202	+/-	11.997
As	678.664	+/-	34.608
Se	1.000	+/-	5.749
Pb	2057.690	+/-	32.279
Hg	1.000	+/-	3.321
Zn	1214.642	+/-	29.597
Cu	163.116	+/-	16.890
Ni	1.000	+/-	24.438
Co	1.000	+/-	30.761
Fe	3219.625	+/-	95.727
Mn	1.000	+/-	74.418
Cr	70.165	+/-	25.768
V	1.000	+/-	40.448
Ti	210.297	+/-	164.247
Ca	197322.813	+/-	1227.573
K	1552.803	+/-	206.079
Al	3974.728	+/-	1124.269
P	1930.876	+/-	159.654
Si	9956.490	+/-	559.393
Cl	2639.679	+/-	58.837
S	8994.334	+/-	128.885
Mg	1.000	+/-	12341.540

Supervised By: \_\_\_\_\_

## Certificate of Verification

XL3t-69288

Reading No 6  
Mode Mining  
Time 2016-10-11 14:41  
Duration 120.73  
Units ppm  
Sigma Value 2  
Sequence Final  
Flags  
INV NR Gm114  
OBJEKT TAFELGEMAELEN  
MATERIAL HOLZ METALL FASSUN  
ANALYSESTELLE P6 SCHWERTQUERSTANGE  
MESSAUFBAU STATIV ANLIEGEND  
FILTER m30lo30hi30li30  
User Login Raquet



	ppm	+/-	Error
Ce	-7.710	+/-	254.410
La	226.083	+/-	116.771
Ba	328.026	+/-	124.285
Sb	53.346	+/-	40.376
Sn	1.000	+/-	28.066
Cd	1.000	+/-	13.926
Ag	1668.765	+/-	56.813
Bal	778721.250	+/-	3084.540
Nb	234.124	+/-	66.558
Zr	1.000	+/-	194.382
Y	1.000	+/-	53.143
Sr	124.497	+/-	14.351
Rb	1.000	+/-	108.630
Th	1.000	+/-	2529.510
Bi	1.000	+/-	2213.250
Au	1134.710	+/-	92.095
As	16026.877	+/-	475.515
Se	71.408	+/-	51.005
Pb	104172.445	+/-	2117.816
Hg	1.000	+/-	33.554
Zn	464.871	+/-	31.967
Cu	293.037	+/-	35.923
Ni	80.598	+/-	54.629
Co	1.000	+/-	79.708
Fe	3805.641	+/-	183.284
Mn	321.128	+/-	121.508
Cr	82.553	+/-	36.612
V	1.000	+/-	86.533
Ti	1.000	+/-	319.121
Ca	34547.086	+/-	721.179
K	2165.755	+/-	211.164
Al	7582.412	+/-	999.117
P	4063.648	+/-	180.283
Si	14529.518	+/-	577.404
Cl	3497.484	+/-	91.006
S	25472.455	+/-	534.757
Mg	1.000	+/-	12718.673

Supervised By: \_\_\_\_\_

## Certificate of Verification

XL3t-69288

Reading No 7  
Mode Mining  
Time 2016-10-11 14:46  
Duration 122.13  
Units ppm  
Sigma Value 2  
Sequence Final  
Flags  
INV NR Gm114  
OBJEKT TAFELGEMAELEN  
MATERIAL HOLZ METALL FASSUN  
ANALYSESTELLE P7 HINTERGRUND  
MESSAUFBAU STATIV ANLIEGEND  
FILTER m30lo30hi30li30  
User Login Raquet



	ppm	+/-	Error
Ce	-339.000	+/-	78.146
La	1.000	+/-	35.512
Ba	1.000	+/-	38.620
Sb	1.000	+/-	21.410
Sn	246.798	+/-	11.355
Cd	148.460	+/-	8.293
Ag	29.493	+/-	4.364
Bal	892573.063	+/-	617.385
Nb	1.000	+/-	9.207
Zr	1.000	+/-	23.682
Y	1.000	+/-	4.939
Sr	225.024	+/-	5.553
Rb	20.664	+/-	10.580
Th	1.000	+/-	317.759
Bi	1.000	+/-	337.391
Au	3197.786	+/-	57.968
As	1614.131	+/-	57.722
Se	1.000	+/-	9.239
Pb	5643.896	+/-	70.881
Hg	1.000	+/-	6.659
Zn	197.628	+/-	18.603
Cu	9489.490	+/-	126.748
Ni	1.000	+/-	23.950
Co	1.000	+/-	23.636
Fe	1466.664	+/-	67.666
Mn	1.000	+/-	60.632
Cr	72.004	+/-	19.449
V	1.000	+/-	25.446
Ti	1.000	+/-	193.979
Ca	55706.934	+/-	549.198
K	3637.088	+/-	169.207
Al	2814.759	+/-	547.167
P	3154.199	+/-	117.527
Si	8455.252	+/-	364.165
Cl	1972.922	+/-	39.014
S	9333.722	+/-	118.045
Mg	1.000	+/-	4817.029

Supervised By: \_\_\_\_\_