

Certificate of Verification

XL3t-69288

Reading No 1
Mode Mining
Time 2016-10-11 11:47
Duration 120.49
Units ppm
Sigma Value 2
Sequence Final
Flags
INV NR Gm113
OBJEKT TAFELGEMAELEN
MATERIAL HOLZ METALL FASSUNG
ANALYSESTELLE P1 GRABTUCH
MESSAUFBAU STATIV anliegend
FILTER m30lo30hi30li30
User Login Raquet



	ppm	+/-	Error
Ce	-339.000	+/-	82.884
La	1.000	+/-	38.053
Ba	1.000	+/-	41.172
Sb	1.000	+/-	16.441
Sn	1.000	+/-	9.942
Cd	20.098	+/-	6.227
Ag	729.040	+/-	17.519
Bal	815019.063	+/-	952.482
Nb	1.000	+/-	3.253
Zr	1.000	+/-	6.526
Y	1.000	+/-	1.374
Sr	374.740	+/-	6.716
Rb	10.383	+/-	3.650
Th	1.000	+/-	94.157
Bi	1.000	+/-	72.779
Au	892.754	+/-	27.120
As	44.728	+/-	11.540
Se	1.000	+/-	3.764
Pb	210.376	+/-	9.838
Hg	21.356	+/-	3.958
Zn	69.214	+/-	10.637
Cu	152.099	+/-	16.899
Ni	1.000	+/-	25.134
Co	1.000	+/-	22.736
Fe	907.753	+/-	58.273
Mn	1.000	+/-	54.653
Cr	1.000	+/-	29.978
V	1.000	+/-	21.077
Ti	1.000	+/-	123.813
Ca	171826.438	+/-	1014.836
K	1437.874	+/-	168.608
Al	1760.499	+/-	922.142
P	1.000	+/-	108.259
Si	1797.262	+/-	339.294
Cl	1227.611	+/-	45.503
S	3498.661	+/-	79.671
Mg	1.000	+/-	10191.025

Supervised By: _____

Certificate of Verification

XL3t-69288

Reading No 2
Mode Mining
Time 2016-10-11 11:51
Duration 121.67
Units ppm
Sigma Value 2
Sequence Final
Flags
INV NR Gm113
OBJEKT TAFELGEMAELEN
MATERIAL HOLZ METALL FASSUNG
ANALYSESTELLE P2 GRABTUCH
MESSAUFBAU STATIV anliegend
FILTER m30lo30hi30li30
User Login Raquet



	ppm	+/-	Error
Ce	-339.000	+/-	91.831
La	1.000	+/-	42.054
Ba	1.000	+/-	45.251
Sb	1.000	+/-	19.269
Sn	1.000	+/-	10.277
Cd	8.196	+/-	6.168
Ag	748.536	+/-	17.445
Bal	925526.000	+/-	498.692
Nb	1.000	+/-	5.218
Zr	1.000	+/-	20.645
Y	1.000	+/-	4.846
Sr	186.801	+/-	8.005
Rb	1.000	+/-	9.296
Th	1.000	+/-	301.580
Bi	1.000	+/-	303.836
Au	635.242	+/-	50.492
As	1340.229	+/-	54.103
Se	1.000	+/-	9.580
Pb	3891.589	+/-	58.469
Hg	5838.851	+/-	71.180
Zn	486.904	+/-	29.791
Cu	119.016	+/-	17.805
Ni	1.000	+/-	29.442
Co	1.000	+/-	31.336
Fe	272.280	+/-	50.650
Mn	1.000	+/-	89.825
Cr	1.000	+/-	33.350
V	1.000	+/-	20.063
Ti	1.000	+/-	78.942
Ca	45897.852	+/-	504.666
K	1366.483	+/-	135.447
Al	1991.734	+/-	473.551
P	1209.708	+/-	85.572
Si	2332.156	+/-	228.875
Cl	1555.686	+/-	35.563
S	6592.834	+/-	94.349
Mg	1.000	+/-	4237.266

Supervised By: _____

Certificate of Verification

XL3t-69288

Reading No 3
Mode Mining
Time 2016-10-11 12:00
Duration 120.48
Units ppm
Sigma Value 2
Sequence Final
Flags
INV NR Gm113
OBJEKT TAFELGEMAELEN
MATERIAL HOLZ METALL FASSUNG
ANALYSESTELLE P3 PALMZWEIG
MESSAUFBAU STATIV anliegend
FILTER m30lo30hi30li30
User Login Raquet



	ppm	+/-	Error
Ce	-339.000	+/-	85.011
La	1.000	+/-	39.237
Ba	1.000	+/-	42.150
Sb	1.000	+/-	21.282
Sn	59.628	+/-	8.976
Cd	9.326	+/-	5.839
Ag	13.711	+/-	4.179
Bal	889239.250	+/-	603.676
Nb	1.000	+/-	2.743
Zr	1.000	+/-	10.979
Y	1.000	+/-	2.230
Sr	275.789	+/-	5.745
Rb	36.276	+/-	7.259
Th	1.000	+/-	163.223
Bi	1.000	+/-	168.076
Au	6401.901	+/-	79.149
As	293.434	+/-	23.636
Se	1.000	+/-	8.804
Pb	1008.828	+/-	21.251
Hg	1.000	+/-	6.317
Zn	150.745	+/-	17.439
Cu	115.009	+/-	14.983
Ni	1.000	+/-	23.763
Co	1.000	+/-	20.712
Fe	462.945	+/-	46.631
Mn	1.000	+/-	56.211
Cr	58.435	+/-	17.937
V	1.000	+/-	14.660
Ti	1.000	+/-	72.924
Ca	84933.844	+/-	624.934
K	436.097	+/-	99.551
Al	2338.208	+/-	603.837
P	8147.561	+/-	168.975
Si	1.000	+/-	341.220
Cl	605.508	+/-	30.028
S	5413.503	+/-	79.019
Mg	1.000	+/-	5936.580

Supervised By: _____

Certificate of Verification

XL3t-69288

Reading No 4
Mode Mining
Time 2016-10-11 12:03
Duration 120.33
Units ppm
Sigma Value 2
Sequence Final
Flags
INV NR Gm113
OBJEKT TAFELGEMAELEN
MATERIAL HOLZ METALL FASSUNG
ANALYSESTELLE P4 HINTERGRUND
MESSAUFBAU STATIV anliegend
FILTER m30lo30hi30li30
User Login Raquet



	ppm	+/-	Error
Ce	-339.000	+/-	93.474
La	1.000	+/-	43.003
Ba	1.000	+/-	46.385
Sb	1.000	+/-	17.770
Sn	9.416	+/-	8.995
Cd	1.000	+/-	9.951
Ag	26.335	+/-	5.341
Bal	830689.875	+/-	930.190
Nb	2.971	+/-	2.965
Zr	1.000	+/-	9.058
Y	1.000	+/-	1.756
Sr	400.711	+/-	7.491
Rb	23.920	+/-	6.021
Th	1.000	+/-	126.548
Bi	1.000	+/-	120.191
Au	4200.438	+/-	65.517
As	63.629	+/-	14.301
Se	1.000	+/-	7.763
Pb	283.171	+/-	12.223
Hg	1.000	+/-	6.130
Zn	125.684	+/-	16.646
Cu	327.647	+/-	22.186
Ni	1.000	+/-	27.893
Co	1083.648	+/-	55.316
Fe	1511.943	+/-	73.679
Mn	1.000	+/-	61.645
Cr	120.147	+/-	27.790
V	1.000	+/-	41.400
Ti	399.907	+/-	192.362
Ca	146313.984	+/-	957.089
K	2048.132	+/-	159.875
Al	1899.054	+/-	862.075
P	3422.092	+/-	155.859
Si	1926.240	+/-	347.806
Cl	888.347	+/-	41.186
S	4232.725	+/-	83.494
Mg	1.000	+/-	8501.491

Supervised By: _____

Certificate of Verification

XL3t-69288

Reading No 5
Mode Mining
Time 2016-10-11 12:10
Duration 122.22
Units ppm
Sigma Value 2
Sequence Final
Flags
INV NR Gm113
OBJEKT TAFELGEMAELEN
MATERIAL HOLZ METALL FASSUNG
ANALYSESTELLE P5 HAND
MESSAUFBAU STATIV anliegend
FILTER m30lo30hi30li30
User Login Raquet



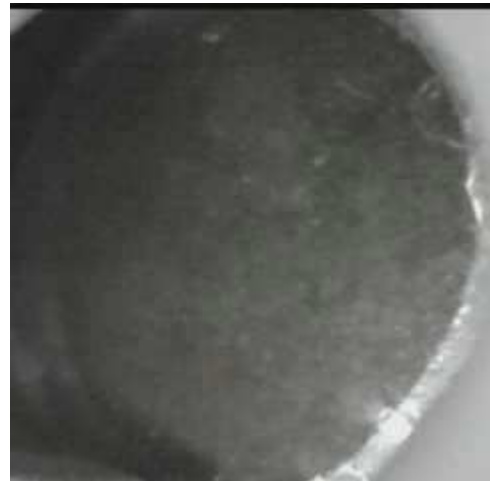
	ppm	+/-	Error
Ce	-339.000	+/-	87.997
La	1.000	+/-	40.310
Ba	1.000	+/-	43.502
Sb	1.000	+/-	17.366
Sn	17.974	+/-	8.689
Cd	11.930	+/-	6.211
Ag	43.385	+/-	5.599
Bal	824721.000	+/-	917.474
Nb	1.000	+/-	3.833
Zr	1.000	+/-	9.018
Y	1.000	+/-	1.815
Sr	436.464	+/-	7.537
Rb	38.100	+/-	6.574
Th	1.000	+/-	131.651
Bi	1.000	+/-	106.663
Au	5752.812	+/-	75.253
As	89.722	+/-	14.051
Se	1.000	+/-	8.538
Pb	278.560	+/-	11.716
Hg	1.000	+/-	6.425
Zn	183.838	+/-	18.265
Cu	622.320	+/-	26.318
Ni	1.000	+/-	25.485
Co	270.913	+/-	37.393
Fe	2105.132	+/-	79.695
Mn	1.000	+/-	60.565
Cr	176.099	+/-	29.669
V	1.000	+/-	48.681
Ti	381.110	+/-	218.508
Ca	142195.141	+/-	907.673
K	2771.673	+/-	173.183
Al	3248.386	+/-	825.736
P	7335.591	+/-	184.291
Si	2028.913	+/-	336.249
Cl	1194.426	+/-	39.478
S	6096.489	+/-	91.450
Mg	1.000	+/-	8119.086

Supervised By: _____

Certificate of Verification

XL3t-69288

Reading No 6
Mode Mining
Time 2016-10-11 12:14
Duration 122.08
Units ppm
Sigma Value 2
Sequence Final
Flags
INV NR Gm113
OBJEKT TAFELGEMAELEN
MATERIAL HOLZ METALL FASSUNG
ANALYSESTELLE P6 HELM
MESSAUFBAU STATIV anliegend
FILTER m30lo30hi30li30
User Login Raquet



	ppm	+/-	Error
Ce	-339.000	+/-	67.176
La	1.000	+/-	30.856
Ba	1.000	+/-	33.446
Sb	1.000	+/-	11.510
Sn	1.000	+/-	8.130
Cd	20.574	+/-	5.157
Ag	735.795	+/-	15.056
Bal	828631.750	+/-	794.133
Nb	2.524	+/-	2.057
Zr	1.000	+/-	4.935
Y	1.000	+/-	1.007
Sr	311.909	+/-	5.321
Rb	3.522	+/-	2.414
Th	1.000	+/-	72.687
Bi	1.000	+/-	57.654
Au	19.412	+/-	5.867
As	37.439	+/-	9.836
Se	1.000	+/-	1.655
Pb	204.885	+/-	8.485
Hg	9.537	+/-	2.269
Zn	25.685	+/-	6.507
Cu	73.017	+/-	12.412
Ni	1.000	+/-	20.010
Co	1.000	+/-	16.760
Fe	357.707	+/-	39.712
Mn	1.000	+/-	46.988
Cr	1.000	+/-	32.501
V	1.000	+/-	18.621
Ti	1.000	+/-	100.010
Ca	158477.516	+/-	847.819
K	972.607	+/-	145.358
Al	3962.128	+/-	864.947
P	1.000	+/-	80.185
Si	1733.440	+/-	290.472
Cl	1034.003	+/-	37.971
S	3386.441	+/-	71.094
Mg	1.000	+/-	7477.849

Supervised By: _____