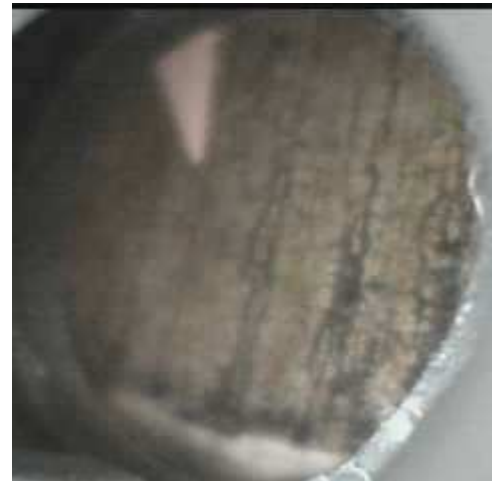


Certificate of Verification

XL3t-69288

Reading No 1
Mode Mining
Time 2016-04-20 15:48
Duration 121.71
Units ppm
Sigma Value 2
Sequence Final
Flags
INV NR Gm541
OBJEKT TAFELGEMAELEN
MATERIAL HOLZ METALL FASSUNG
ANALYSESTELLE P1 NIMBUS MARIA
MESSAUFBAU STATIV ANLIEGEND
FILTER m30lo30hi30li30
User Login Raquet



	ppm	+/-	Error
Ce	-339.000	+/-	55.761
La	1.000	+/-	25.561
Ba	1.000	+/-	27.548
Sb	1.000	+/-	9.563
Sn	25.949	+/-	6.921
Cd	15.870	+/-	4.243
Ag	318.130	+/-	8.639
Bal	878181.625	+/-	589.252
Nb	13.277	+/-	4.014
Zr	1.000	+/-	17.951
Y	1.000	+/-	2.950
Sr	34.941	+/-	2.095
Rb	6.636	+/-	6.339
Th	1.000	+/-	206.831
Bi	1.000	+/-	179.172
Au	317.574	+/-	16.494
As	1035.744	+/-	37.290
Se	1.000	+/-	4.428
Pb	3271.155	+/-	38.273
Hg	98.483	+/-	6.739
Zn	28.935	+/-	7.354
Cu	514.245	+/-	20.316
Ni	1.000	+/-	17.949
Co	1.000	+/-	19.386
Fe	1451.870	+/-	58.663
Mn	1.000	+/-	40.976
Cr	18.332	+/-	15.342
V	1.000	+/-	12.914
Ti	215.011	+/-	72.546
Ca	65797.273	+/-	528.052
K	1798.015	+/-	155.922
Al	4175.832	+/-	667.395
P	5361.614	+/-	156.741
Si	25682.904	+/-	646.252
Cl	2032.964	+/-	41.883
S	9603.646	+/-	116.937
Mg	1.000	+/-	5835.361

Supervised By: _____

Certificate of Verification

XL3t-69288

Reading No 2
Mode Mining
Time 2016-04-20 15:52
Duration 122.81
Units ppm
Sigma Value 2
Sequence Final
Flags
INV NR Gm541
OBJEKT TAFELGEMAELEN
MATERIAL HOLZ METALL FASSUNG
ANALYSESTELLE P2 NIMBUS CHRISTUS
MESSAUFBAU STATIV ANLIEGEND
FILTER m30lo30hi30li30
User Login Raquet



	ppm	+/-	Error
Ce	-339.000	+/-	52.753
La	1.000	+/-	24.130
Ba	1.000	+/-	25.980
Sb	1.000	+/-	11.326
Sn	16.306	+/-	6.315
Cd	19.018	+/-	4.084
Ag	291.866	+/-	7.929
Bal	894070.688	+/-	523.329
Nb	13.777	+/-	3.811
Zr	1.000	+/-	15.495
Y	1.000	+/-	2.720
Sr	31.835	+/-	2.042
Rb	7.110	+/-	5.951
Th	1.000	+/-	193.778
Bi	1.000	+/-	165.759
Au	353.325	+/-	17.036
As	868.364	+/-	34.116
Se	1.000	+/-	4.267
Pb	2666.101	+/-	33.458
Hg	115.360	+/-	6.775
Zn	36.466	+/-	7.695
Cu	400.052	+/-	18.555
Ni	1.000	+/-	17.806
Co	1.000	+/-	18.433
Fe	1162.711	+/-	54.419
Mn	1.000	+/-	40.845
Cr	22.661	+/-	14.520
V	1.000	+/-	13.382
Ti	91.223	+/-	62.286
Ca	65190.762	+/-	515.018
K	1625.975	+/-	144.592
Al	2477.536	+/-	583.076
P	5885.141	+/-	155.963
Si	13909.263	+/-	488.292
Cl	2088.470	+/-	41.351
S	8655.988	+/-	107.208
Mg	1.000	+/-	5632.167

Supervised By: _____

Certificate of Verification

XL3t-69288

Reading No 3
Mode Mining
Time 2016-04-20 15:56
Duration 121.69
Units ppm
Sigma Value 2
Sequence Final
Flags
INV NR Gm541
OBJEKT TAFELGEMAELEN
MATERIAL HOLZ METALL FASSUNG
ANALYSESTELLE P3 SCHWARZZEICHNUNG
MESSAUFBAU STATIV ANLIEGEND
FILTER m30lo30hi30li30
User Login Raquet



	ppm	+/-	Error
Ce	-339.000	+/-	52.698
La	1.000	+/-	24.196
Ba	1.000	+/-	26.068
Sb	12.770	+/-	9.814
Sn	27.991	+/-	6.379
Cd	18.933	+/-	4.062
Ag	260.154	+/-	7.471
Bal	902324.313	+/-	498.335
Nb	12.950	+/-	4.589
Zr	1.000	+/-	16.827
Y	1.000	+/-	3.445
Sr	31.374	+/-	2.170
Rb	1.000	+/-	10.469
Th	1.000	+/-	239.679
Bi	1.000	+/-	207.767
Au	316.226	+/-	17.565
As	1185.400	+/-	42.399
Se	1.000	+/-	5.008
Pb	3992.421	+/-	46.399
Hg	134.457	+/-	7.773
Zn	24.008	+/-	8.613
Cu	2500.711	+/-	46.019
Ni	1.000	+/-	18.333
Co	1.000	+/-	19.669
Fe	1369.263	+/-	58.830
Mn	1.000	+/-	42.333
Cr	1.000	+/-	19.905
V	1.000	+/-	17.238
Ti	131.203	+/-	62.017
Ca	51982.004	+/-	457.160
K	1928.669	+/-	130.997
Al	2791.502	+/-	539.095
P	4156.267	+/-	132.582
Si	14955.551	+/-	475.398
Cl	2142.637	+/-	40.264
S	9701.265	+/-	116.862
Mg	1.000	+/-	4990.896

Supervised By: _____

Certificate of Verification

XL3t-69288

Reading No 4
Mode Mining
Time 2016-04-20 16:00
Duration 121.87
Units ppm
Sigma Value 2
Sequence Final
Flags
INV NR Gm541
OBJEKT TAFELGEMAELEN
MATERIAL HOLZ METALL FASSUNG
ANALYSESTELLE P4 ROTLACK
MESSAUFBAU STATIV ANLIEGEND
FILTER m30lo30hi30li30
User Login Raquet



	ppm	+/-	Error
Ce	-339.000	+/-	71.551
La	1.000	+/-	32.873
Ba	1.000	+/-	35.053
Sb	1.000	+/-	16.249
Sn	14.808	+/-	6.841
Cd	10.593	+/-	4.991
Ag	7.415	+/-	3.368
Bal	920868.313	+/-	517.964
Nb	1.000	+/-	9.294
Zr	1.000	+/-	23.546
Y	1.000	+/-	5.534
Sr	1.000	+/-	5.677
Rb	1.000	+/-	10.406
Th	1.000	+/-	343.201
Bi	1.000	+/-	292.799
Au	1.000	+/-	46.218
As	1756.430	+/-	60.529
Se	10.427	+/-	7.633
Pb	4853.799	+/-	68.838
Hg	7164.767	+/-	84.460
Zn	347.392	+/-	28.471
Cu	253.690	+/-	20.737
Ni	1.000	+/-	26.499
Co	1.000	+/-	29.632
Fe	1955.043	+/-	86.888
Mn	1.000	+/-	95.953
Cr	1.000	+/-	18.402
V	1.000	+/-	18.084
Ti	1.000	+/-	71.327
Ca	33132.082	+/-	398.231
K	2391.485	+/-	137.237
Al	1427.472	+/-	423.225
P	1625.585	+/-	98.114
Si	7970.549	+/-	322.966
Cl	1458.829	+/-	31.980
S	14751.363	+/-	173.893
Mg	1.000	+/-	4240.265

Supervised By: _____