

## Certificate of Verification

XL3t-69288

Reading No 1  
Mode Mining  
Time 2015-09-25 09:53  
Duration 120.13  
Units ppm  
Sigma Value 2  
Sequence Final  
Flags  
INV NR Gm522  
OBJEKT TAFELGEMAELEN  
MATERIAL HOLZ METALL FASSUNG  
ANALYSESTELLE P1 GOLDGRUND  
MESSAUFBAU STATIV ANLIEGEND  
FILTER m30lohi30li30  
User Login Raquet



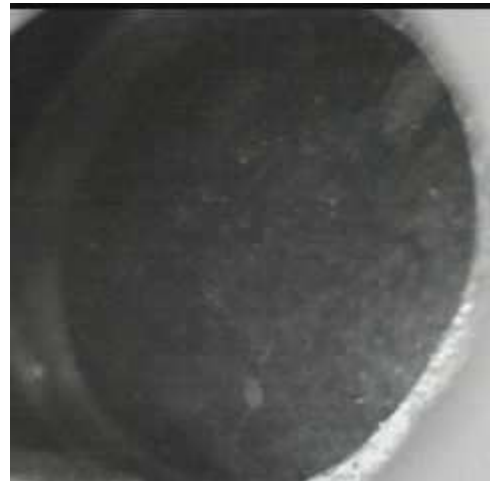
	ppm	+/-	Error
Ce	-339.000	+/-	103.575
La	1.000	+/-	47.582
Ba	1.000	+/-	50.958
Sb	1.000	+/-	22.038
Sn	1.000	+/-	14.982
Cd	1.000	+/-	8.948
Ag	59.976	+/-	6.418
Bal	746371.063	+/-	1339.157
Nb	1.000	+/-	3.012
Zr	1.000	+/-	11.782
Y	1.000	+/-	2.319
Sr	368.063	+/-	7.477
Rb	59.400	+/-	9.258
Th	1.000	+/-	173.670
Bi	1.000	+/-	170.269
<b>Au</b>	<b>10761.299</b>	<b>+/-</b>	<b>122.228</b>
As	86.773	+/-	17.950
Se	1.000	+/-	12.327
<b>Pb</b>	<b>443.450</b>	<b>+/-</b>	<b>15.875</b>
Hg	1.000	+/-	13.632
<b>Zn</b>	<b>369.768</b>	<b>+/-</b>	<b>25.868</b>
<b>Cu</b>	<b>1454.335</b>	<b>+/-</b>	<b>40.302</b>
Ni	1.000	+/-	27.739
Co	1.000	+/-	24.000
<b>Fe</b>	<b>509.997</b>	<b>+/-</b>	<b>52.268</b>
Mn	1.000	+/-	89.298
Cr	161.646	+/-	22.115
V	1.000	+/-	20.580
<b>Ti</b>	<b>1.000</b>	<b>+/-</b>	<b>129.667</b>
Ca	149703.344	+/-	1014.879
K	1499.630	+/-	146.280
Al	2702.514	+/-	1108.408
P	62337.605	+/-	589.464
Si	3019.545	+/-	644.601
Cl	1941.668	+/-	52.817
S	18149.945	+/-	195.130
Mg	1.000	+/-	11985.535

Supervised By: \_\_\_\_\_

## Certificate of Verification

XL3t-69288

Reading No 2  
Mode Mining  
Time 2015-09-25 10:04  
Duration 121.24  
Units ppm  
Sigma Value 2  
Sequence Final  
Flags  
INV NR Gm522  
OBJEKT TAFELGEMAELEN  
MATERIAL HOLZ METALL FASSUNG  
ANALYSESTELLE P2 GEWAND MARIA  
MESSAUFBAU STATIV ANLIEGEND  
FILTER m30lohi30li30  
User Login Raquet



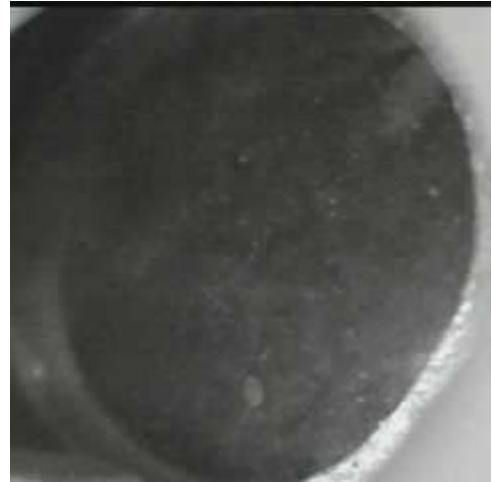
	ppm	+/-	Error
Ce	-339.000	+/-	148.938
La	1.000	+/-	67.836
Ba	1.000	+/-	101.651
Sb	47.193	+/-	25.550
Sn	13.427	+/-	12.970
Cd	1.000	+/-	8.361
Ag	1.000	+/-	5.155
Bal	802814.125	+/-	1746.098
Nb	1.000	+/-	18.855
Zr	1.000	+/-	72.509
Y	1.000	+/-	11.941
Sr	239.419	+/-	9.878
Rb	1.000	+/-	20.882
Th	1.000	+/-	691.834
Bi	1.000	+/-	761.913
<b>Au</b>	<b>1.000</b>	<b>+/-</b>	<b>18.073</b>
As	864.156	+/-	115.772
Se	1.000	+/-	18.427
<b>Pb</b>	<b>9410.990</b>	<b>+/-</b>	<b>175.099</b>
Hg	1.000	+/-	10.048
<b>Zn</b>	<b>1300.499</b>	<b>+/-</b>	<b>64.915</b>
<b>Cu</b>	<b>133843.922</b>	<b>+/-</b>	<b>1506.570</b>
Ni	1.000	+/-	37.111
Co	1.000	+/-	38.965
<b>Fe</b>	<b>3327.943</b>	<b>+/-</b>	<b>107.777</b>
Mn	120.921	+/-	64.294
Cr	1.000	+/-	23.716
V	1.000	+/-	23.410
<b>Ti</b>	<b>430.543</b>	<b>+/-</b>	<b>129.099</b>
Ca	12646.469	+/-	233.777
K	3083.099	+/-	183.657
Al	2352.461	+/-	571.239
P	708.159	+/-	72.019
Si	8190.804	+/-	307.670
Cl	1342.547	+/-	30.359
S	8791.169	+/-	120.320
Mg	10472.184	+/-	6822.350

Supervised By: \_\_\_\_\_

## Certificate of Verification

XL3t-69288

Reading No 3  
Mode Mining  
Time 2015-09-25 10:15  
Duration 121.73  
Units ppm  
Sigma Value 2  
Sequence Final  
Flags  
INV NR Gm522  
OBJEKT TAFELGEMAELEN  
MATERIAL HOLZ METALL FASSUNG  
ANALYSESTELLE P3 GEWAND JOHANNES  
MESSAUFBAU STATIV ANLIEGEND  
FILTER m30lohi30li30  
User Login Raquet



	ppm	+/-	Error
Ce	-339.000	+/-	143.070
La	1.000	+/-	98.276
Ba	1.000	+/-	94.498
Sb	1.000	+/-	32.283
Sn	1.000	+/-	11.498
Cd	1.000	+/-	7.990
Ag	1.000	+/-	4.991
Bal	862915.438	+/-	1096.090
Nb	1.000	+/-	13.021
Zr	1.000	+/-	39.193
Y	1.000	+/-	9.895
Sr	227.662	+/-	12.705
Rb	1.000	+/-	18.010
Th	1.000	+/-	562.491
Bi	1.000	+/-	562.610
Au	1.000	+/-	69.262
As	2947.448	+/-	104.138
Se	12.942	+/-	11.161
Pb	9133.537	+/-	147.888
Hg	9783.053	+/-	144.338
Zn	6000.345	+/-	118.337
Cu	896.815	+/-	42.525
Ni	1.000	+/-	39.404
Co	1.000	+/-	41.362
Fe	2674.828	+/-	122.077
Mn	109.623	+/-	88.202
Cr	1.000	+/-	29.367
V	1.000	+/-	26.688
Ti	1.000	+/-	124.884
Ca	50438.684	+/-	684.165
K	7759.214	+/-	263.322
Al	12413.078	+/-	1092.727
P	1491.117	+/-	142.060
Si	9931.365	+/-	479.515
Cl	3911.854	+/-	74.683
S	19353.002	+/-	275.700
Mg	1.000	+/-	8683.945

Supervised By: \_\_\_\_\_

## Certificate of Verification

XL3t-69288

Reading No 4  
Mode Mining  
Time 2015-09-25 10:20  
Duration 120.03  
Units ppm  
Sigma Value 2  
Sequence Final  
Flags  
INV NR Gm522  
OBJEKT TAFELGEMAELEN  
MATERIAL HOLZ METALL FASSUNG  
ANALYSESTELLE P4 POLIMENT  
MESSAUFBAU STATIV ANLIEGEND  
FILTER m30lohi30li30  
User Login Raquet



	ppm	+/-	Error
Ce	-339.000	+/-	91.684
La	1.000	+/-	42.323
Ba	1.000	+/-	45.570
Sb	1.000	+/-	15.382
Sn	1.000	+/-	11.318
Cd	1.000	+/-	5.365
Ag	1.000	+/-	4.014
Bal	668674.063	+/-	1505.653
Nb	1.000	+/-	1.659
Zr	1.000	+/-	6.359
Y	1.000	+/-	1.286
Sr	396.477	+/-	6.600
Rb	1.000	+/-	3.343
Th	1.000	+/-	92.616
Bi	1.000	+/-	76.137
<b>Au</b>	<b>144.026</b>	<b>+/-</b>	<b>11.278</b>
As	47.535	+/-	12.968
Se	1.000	+/-	2.332
<b>Pb</b>	<b>328.490</b>	<b>+/-</b>	<b>11.459</b>
Hg	5.944	+/-	2.534
<b>Zn</b>	<b>123.271</b>	<b>+/-</b>	<b>11.044</b>
<b>Cu</b>	<b>1348.844</b>	<b>+/-</b>	<b>35.032</b>
Ni	1.000	+/-	23.200
Co	1.000	+/-	19.515
<b>Fe</b>	<b>559.409</b>	<b>+/-</b>	<b>47.504</b>
Mn	1.000	+/-	57.050
Cr	1.000	+/-	28.179
V	1.000	+/-	15.590
<b>Ti</b>	<b>1.000</b>	<b>+/-</b>	<b>128.939</b>
Ca	273860.063	+/-	1373.596
K	1546.758	+/-	162.563
Al	3544.985	+/-	1339.586
P	1.000	+/-	199.074
Si	16616.830	+/-	690.871
Cl	1776.479	+/-	48.678
S	4145.136	+/-	87.971
Mg	26881.633	+/-	13272.812

Supervised By: \_\_\_\_\_