

mRFA -Ergebnisse

XL3t-69288

Reading No 1  
Mode Mining  
Time 2017-05-08 13:45  
Duration 121.17  
Units ppm  
Sigma Value 2  
Sequence Final  
Flags 3mm  
INV NR Gm147  
OBJEKT TAFELGEMAELENDE  
MATERIAL HOLZ METALL FASSUNG  
ANALYSESTELLE P1 NIMBUS  
MESSAUFBAU STATIV ANLIEGEND  
FILTER m30lo30hi30li30  
User Login Raquet



	ppm	+/-	Error
Ce	1.000	+/-	151.363
La	1.000	+/-	123.091
Ba	1.000	+/-	181.199
Sb	1.000	+/-	54.324
Sn	454.528	+/-	54.196
Cd	23.403	+/-	18.147
Ag	466.161	+/-	35.855
Bal	899579.313	+/-	1210.292
Nb	44.608	+/-	28.065
Zr	1.000	+/-	94.276
Y	1.000	+/-	24.246
Sr	153.751	+/-	10.602
Rb	1.000	+/-	52.529
Th	1.000	+/-	1269.443
Bi	1.000	+/-	1329.261
Au	1262.511	+/-	81.298
As	6703.637	+/-	249.925
Se	30.512	+/-	21.794
Pb	29445.891	+/-	658.374
Hg	1.000	+/-	21.633
Zn	139.197	+/-	22.662
Cu	733.427	+/-	53.763
Ni	1.000	+/-	43.230
Co	1.000	+/-	60.599
Fe	2533.147	+/-	171.992
Mn	1.000	+/-	102.437
Cr	123.254	+/-	37.429
V	1.000	+/-	28.139
Ti	1.000	+/-	124.042
Ca	15592.845	+/-	460.485
K	1984.126	+/-	244.018
Al	836.242	+/-	699.219
P	12326.331	+/-	406.524
Si	6559.218	+/-	588.892
Cl	2115.596	+/-	89.054
S	18892.275	+/-	486.517
Mg	1.000	+/-	8250.600

mRFA -Ergebnisse

XL3t-69288

Reading No 2  
Mode Mining  
Time 2017-05-08 13:51  
Duration 121.06  
Units ppm  
Sigma Value 2  
Sequence Final  
Flags 3mm  
INV NR Gm147  
OBJEKT TAFELGEMAELENDE  
MATERIAL HOLZ METALL FASSUNG  
ANALYSESTELLE P2 GEWAND  
MESSAUFBAU STATIV ANLIEGEND  
FILTER m30lo30hi30li30  
User Login Raquet



	ppm	+/-	Error
Ce	1.000	+/-	122.504
La	1.000	+/-	99.566
Ba	1.000	+/-	105.909
Sb	1.000	+/-	41.021
Sn	256.884	+/-	37.181
Cd	21.114	+/-	15.169
Ag	128.167	+/-	17.921
Bal	898288.875	+/-	1106.183
Nb	30.825	+/-	21.265
Zr	1.000	+/-	73.613
Y	1.000	+/-	18.115
Sr	144.157	+/-	9.154
Rb	1.000	+/-	49.516
Th	1.000	+/-	1005.032
Bi	1.000	+/-	912.730
Au	936.733	+/-	65.623
As	5212.465	+/-	193.895
Se	1.000	+/-	22.419
Pb	20928.250	+/-	434.512
Hg	1.000	+/-	19.561
Zn	113.154	+/-	19.969
Cu	660.312	+/-	48.199
Ni	1.000	+/-	37.428
Co	1.000	+/-	61.384
Fe	3361.448	+/-	186.029
Mn	1.000	+/-	133.328
Cr	657.226	+/-	42.406
V	1.000	+/-	25.518
Ti	1.000	+/-	119.204
Ca	12397.769	+/-	357.805
K	1625.473	+/-	200.205
Al	5688.411	+/-	892.896
P	9955.429	+/-	330.438
Si	9894.253	+/-	633.476
Cl	3603.888	+/-	112.974
S	26095.184	+/-	583.218
Mg	1.000	+/-	7827.173

mRFA -Ergebnisse

XL3t-69288

Reading No 3  
Mode Mining  
Time 2017-05-08 13:54  
Duration 121.18  
Units ppm  
Sigma Value 2  
Sequence Final  
Flags  
INV NR Gm147  
OBJEKT TAFELGEMAELENDE  
MATERIAL HOLZ METALL FASSUNG  
ANALYSESTELLE P3 GEWAND  
MESSAUFBAU STATIV ANLIEGEND  
FILTER m30lo30hi30li30  
User Login Raquet

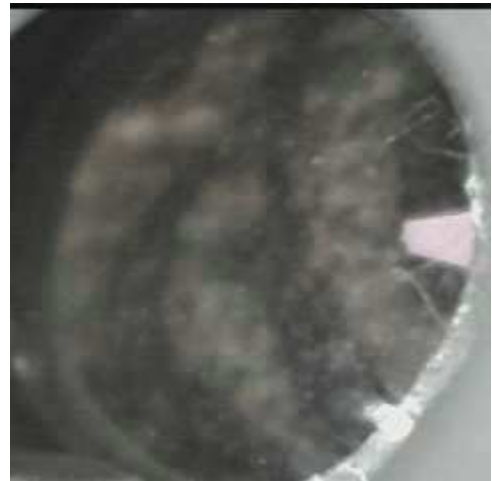


	ppm	+/-	Error
Ce	-339.000	+/-	109.105
La	1.000	+/-	50.510
Ba	1.000	+/-	53.785
Sb	1.000	+/-	17.844
Sn	802.791	+/-	25.150
Cd	14.125	+/-	7.453
Ag	412.081	+/-	14.953
Bal	892799.500	+/-	818.491
Nb	44.441	+/-	17.392
Zr	1.000	+/-	59.168
Y	1.000	+/-	14.684
Sr	132.471	+/-	6.661
Rb	1.000	+/-	32.306
Th	1.000	+/-	833.921
Bi	1.000	+/-	792.091
Au	617.699	+/-	42.191
As	6433.107	+/-	167.732
Se	1.000	+/-	18.869
Pb	25663.521	+/-	385.987
Hg	116.128	+/-	20.009
Zn	129.698	+/-	15.277
Cu	679.875	+/-	33.789
Ni	1.000	+/-	30.970
Co	1.000	+/-	33.238
Fe	1977.981	+/-	98.106
Mn	74.888	+/-	69.331
Cr	419.914	+/-	25.430
V	1.000	+/-	20.451
Ti	1.000	+/-	81.178
Ca	16989.480	+/-	327.599
K	1702.287	+/-	158.949
Al	3396.191	+/-	614.848
P	10808.478	+/-	253.005
Si	8679.176	+/-	418.527
Cl	2139.301	+/-	51.603
S	25966.873	+/-	435.109
Mg	1.000	+/-	7722.271

mRFA -Ergebnisse

XL3t-69288

Reading No 4  
Mode Mining  
Time 2017-05-08 13:59  
Duration 122.10  
Units ppm  
Sigma Value 2  
Sequence Final  
Flags  
INV NR Gm147  
OBJEKT TAFELGEMAELEN  
MATERIAL HOLZ METALL FASSUNG  
ANALYSESTELLE P4 MANTEL  
MESSAUFBAU STATIV ANLIEGEND  
FILTER m30lo30hi30li30  
User Login Raquet



	ppm	+/-	Error
Ce	-339.000	+/-	184.523
La	1.000	+/-	84.424
Ba	1.000	+/-	88.945
Sb	1.000	+/-	28.379
Sn	7293.174	+/-	142.958
Cd	66.140	+/-	14.145
Ag	150.850	+/-	12.938
Bal	847712.813	+/-	1522.303
Nb	73.175	+/-	34.788
Zr	1.000	+/-	110.771
Y	1.000	+/-	28.730
Sr	126.484	+/-	9.243
Rb	1.000	+/-	56.667
Th	1.000	+/-	1506.126
Bi	1.000	+/-	1268.387
Au	1.000	+/-	37.971
As	8631.180	+/-	271.788
Se	1.000	+/-	23.479
Pb	52141.094	+/-	904.961
Hg	1.000	+/-	20.821
Zn	103.906	+/-	15.257
Cu	1262.044	+/-	54.962
Ni	1.000	+/-	43.892
Co	1.000	+/-	60.195
Fe	5984.867	+/-	205.234
Mn	94.419	+/-	84.876
Cr	42.662	+/-	25.788
V	1.000	+/-	23.082
Ti	230.136	+/-	126.764
Ca	17899.816	+/-	391.869
K	2920.465	+/-	204.606
Al	3050.573	+/-	692.760
P	1767.681	+/-	139.308
Si	20579.881	+/-	655.511
Cl	2934.684	+/-	72.427
S	26934.072	+/-	520.878
Mg	1.000	+/-	7569.569

mRFA -Ergebnisse

XL3t-69288

Reading No 5  
Mode Mining  
Time 2017-05-08 14:05  
Duration 121.75  
Units ppm  
Sigma Value 2  
Sequence Final  
Flags  
INV NR Gm147  
OBJEKT TAFELGEMAELEN  
MATERIAL HOLZ METALL FASSUNG  
ANALYSESTELLE P5 MANTEL  
MESSAUFBAU STATIV ANLIEGEND  
FILTER m30lo30hi30li30  
User Login Raquet



	ppm	+/-	Error
Ce	-339.000	+/-	157.041
La	1.000	+/-	72.073
Ba	1.000	+/-	76.360
Sb	1.000	+/-	24.796
Sn	2206.381	+/-	55.588
Cd	24.705	+/-	10.641
Ag	293.146	+/-	15.704
Bal	852603.313	+/-	1437.267
Nb	71.495	+/-	33.643
Zr	1.000	+/-	107.301
Y	1.000	+/-	27.628
Sr	128.394	+/-	8.952
Rb	1.000	+/-	58.836
Th	1.000	+/-	1460.836
Bi	1.000	+/-	1128.991
Au	1.000	+/-	37.598
As	10007.503	+/-	278.865
Se	1.000	+/-	15.654
Pb	50817.359	+/-	864.996
Hg	1.000	+/-	19.796
Zn	115.524	+/-	16.983
Cu	4418.590	+/-	113.541
Ni	1.000	+/-	46.800
Co	1.000	+/-	54.331
Fe	1277.300	+/-	96.299
Mn	1.000	+/-	111.744
Cr	24.011	+/-	23.012
V	1.000	+/-	16.887
Ti	1.000	+/-	89.473
Ca	17677.322	+/-	365.789
K	1816.250	+/-	162.081
Al	1951.262	+/-	629.947
P	2063.053	+/-	142.226
Si	13798.381	+/-	507.461
Cl	2593.038	+/-	63.679
S	30695.996	+/-	567.476
Mg	7416.973	+/-	7043.535

mRFA -Ergebnisse

XL3t-69288

Reading No 6  
Mode Mining  
Time 2017-05-08 14:09  
Duration 120.54  
Units ppm  
Sigma Value 2  
Sequence Final  
Flags  
INV NR Gm147  
OBJEKT TAFELGEMAELEN  
MATERIAL HOLZ METALL FASSUNG  
ANALYSESTELLE P6 KRONE  
MESSAUFBAU STATIV ANLIEGEND  
FILTER m30lo30hi30li30  
User Login Raquet



	ppm	+/-	Error
Ce	-339.000	+/-	160.942
La	1.000	+/-	73.486
Ba	1.000	+/-	78.172
Sb	1.000	+/-	26.466
Sn	69.605	+/-	17.891
Cd	24.394	+/-	10.458
Ag	537.687	+/-	21.719
Bal	856953.438	+/-	1419.107
Nb	68.986	+/-	34.981
Zr	1.000	+/-	110.647
Y	1.000	+/-	28.927
Sr	162.618	+/-	9.868
Rb	1.000	+/-	71.638
Th	1.000	+/-	1501.931
Bi	1.000	+/-	1159.630
Au	405.386	+/-	53.762
As	11460.540	+/-	297.766
Se	1.000	+/-	25.740
Pb	53506.738	+/-	913.430
Hg	1.000	+/-	20.988
Zn	124.857	+/-	15.357
Cu	488.367	+/-	34.586
Ni	1.000	+/-	38.748
Co	38.548	+/-	35.910
Fe	761.355	+/-	82.490
Mn	130.943	+/-	83.151
Cr	182.942	+/-	26.960
V	1.000	+/-	21.574
Ti	1.000	+/-	96.277
Ca	20502.025	+/-	413.314
K	3695.298	+/-	203.986
Al	3831.589	+/-	672.081
P	10989.451	+/-	272.386
Si	10889.774	+/-	472.080
Cl	2950.306	+/-	70.215
S	22225.189	+/-	421.230
Mg	1.000	+/-	6280.734