

mRFA -Ergebnisse

XL3t-69288

Reading No 1
Mode Mining
Time 2017-05-08 14:56
Duration 120.25
Units ppm
Sigma Value 2
Sequence Final
Flags
INV NR Gm146
OBJEKT TAFELGEMAELEN
MATERIAL HOLZ METALL FASSUNG
ANALYSESTELLE P1 KRONE
MESSAUFBAU STATIV ANLIEGEND
FILTER m30lo30hi30li30
User Login Raquet



	ppm	+/-	Error
Ce	-339.000	+/-	86.844
La	1.000	+/-	40.226
Ba	1.000	+/-	42.749
Sb	1.000	+/-	18.295
Sn	174.389	+/-	13.314
Cd	12.463	+/-	5.938
Ag	714.145	+/-	16.895
Bal	915821.813	+/-	573.794
Nb	23.259	+/-	12.975
Zr	1.000	+/-	45.340
Y	1.000	+/-	10.711
Sr	130.497	+/-	5.229
Rb	1.000	+/-	31.840
Th	1.000	+/-	648.237
Bi	1.000	+/-	571.346
Au	592.724	+/-	32.638
As	4880.273	+/-	124.454
Se	1.000	+/-	10.455
Pb	18194.809	+/-	248.732
Hg	1.000	+/-	9.094
Zn	81.690	+/-	10.908
Cu	736.839	+/-	31.400
Ni	1.000	+/-	26.762
Co	1.000	+/-	31.368
Fe	2580.201	+/-	99.553
Mn	1.000	+/-	57.337
Cr	45.714	+/-	17.492
V	1.000	+/-	16.229
Ti	1.000	+/-	81.175
Ca	21495.914	+/-	346.714
K	2148.780	+/-	181.496
Al	1168.009	+/-	503.627
P	6622.239	+/-	176.194
Si	7515.338	+/-	378.838
Cl	3471.947	+/-	66.800
S	13588.976	+/-	216.069
Mg	1.000	+/-	5255.950

mRFA -Ergebnisse

XL3t-69288

Reading No 2
Mode Mining
Time 2017-05-08 15:01
Duration 121.30
Units ppm
Sigma Value 2
Sequence Final
Flags
INV NR Gm146
OBJEKT TAFELGEMAELENDE
MATERIAL HOLZ METALL FASSUNG
ANALYSESTELLE P2 ARZNEIBECHER
MESSAUFBAU STATIV ANLIEGEND
FILTER m30lo30hi30li30
User Login Raquet



	ppm	+/-	Error
Ce	-339.000	+/-	109.852
La	1.000	+/-	50.500
Ba	1.000	+/-	53.846
Sb	1.000	+/-	17.929
Sn	527.718	+/-	21.930
Cd	14.209	+/-	7.432
Ag	661.576	+/-	19.524
Bal	922374.750	+/-	634.988
Nb	32.461	+/-	19.405
Zr	1.000	+/-	65.741
Y	1.000	+/-	16.048
Sr	109.661	+/-	6.026
Rb	1.000	+/-	39.221
Th	1.000	+/-	919.234
Bi	1.000	+/-	751.276
Au	1.000	+/-	22.152
As	6729.207	+/-	177.704
Se	1.000	+/-	12.343
Pb	28160.516	+/-	429.204
Hg	1.000	+/-	12.238
Zn	61.213	+/-	10.283
Cu	1372.628	+/-	48.499
Ni	1.000	+/-	30.862
Co	1.000	+/-	47.430
Fe	5559.099	+/-	167.228
Mn	1.000	+/-	62.872
Cr	37.230	+/-	20.690
V	1.000	+/-	20.096
Ti	1.000	+/-	88.913
Ca	9182.380	+/-	219.042
K	4610.020	+/-	233.897
Al	509.142	+/-	454.116
P	508.593	+/-	86.275
Si	5604.977	+/-	308.509
Cl	2267.155	+/-	53.182
S	11677.456	+/-	211.470
Mg	1.000	+/-	4902.951

mRFA -Ergebnisse

XL3t-69288

Reading No 3
Mode Mining
Time 2017-05-08 15:06
Duration 121.21
Units ppm
Sigma Value 2
Sequence Final
Flags
INV NR Gm146
OBJEKT TAFELGEMAELEN
MATERIAL HOLZ METALL FASSUNG
ANALYSESTELLE P3 BAND HAUBE SCHWARZZEICHNUNG
MESSAUFBAU STATIV ANLIEGEND
FILTER m30lo30hi30li30
User Login Raquet



	ppm	+/-	Error
Ce	-339.000	+/-	102.529
La	1.000	+/-	47.011
Ba	1.000	+/-	50.243
Sb	1.000	+/-	16.719
Sn	378.740	+/-	18.591
Cd	21.015	+/-	7.115
Ag	849.044	+/-	21.040
Bal	910496.500	+/-	715.653
Nb	31.094	+/-	19.164
Zr	1.000	+/-	65.046
Y	1.000	+/-	15.929
Sr	104.310	+/-	6.373
Rb	1.000	+/-	41.336
Th	1.000	+/-	912.850
Bi	1.000	+/-	783.921
Au	745.931	+/-	45.510
As	6772.036	+/-	177.154
Se	1.000	+/-	13.037
Pb	27570.178	+/-	420.124
Hg	79.108	+/-	20.503
Zn	115.054	+/-	15.722
Cu	1903.088	+/-	58.417
Ni	1.000	+/-	31.866
Co	1.000	+/-	42.253
Fe	3984.582	+/-	138.927
Mn	1.000	+/-	90.164
Cr	64.627	+/-	20.030
V	1.000	+/-	22.861
Ti	1.000	+/-	86.919
Ca	19087.648	+/-	354.177
K	3063.031	+/-	212.945
Al	1470.892	+/-	478.008
P	3884.354	+/-	131.912
Si	5828.888	+/-	317.248
Cl	2599.955	+/-	56.619
S	10949.869	+/-	194.907
Mg	1.000	+/-	4520.651

mRFA -Ergebnisse

XL3t-69288

Reading No 4
Mode Mining
Time 2017-05-08 15:12
Duration 121.92
Units ppm
Sigma Value 2
Sequence Final
Flags
INV NR Gm146
OBJEKT TAFELGEMAELENDE
MATERIAL HOLZ METALL FASSUNG
ANALYSESTELLE P4 POKAL HINTEN
MESSAUFBAU STATIV ANLIEGEND
FILTER m30lo30hi30li30
User Login Raquet



	ppm	+/-	Error
Ce	-339.000	+/-	98.803
La	1.000	+/-	45.155
Ba	1.000	+/-	48.174
Sb	1.000	+/-	16.661
Sn	417.481	+/-	17.928
Cd	14.074	+/-	6.648
Ag	684.141	+/-	17.632
Bal	925241.625	+/-	565.966
Nb	25.029	+/-	16.493
Zr	1.000	+/-	56.593
Y	1.000	+/-	13.592
Sr	110.956	+/-	5.493
Rb	1.000	+/-	34.635
Th	1.000	+/-	809.080
Bi	1.000	+/-	619.076
Au	1.000	+/-	20.050
As	5785.549	+/-	151.848
Se	1.000	+/-	11.314
Pb	24205.148	+/-	347.921
Hg	1.000	+/-	10.606
Zn	68.832	+/-	10.723
Cu	2163.231	+/-	59.410
Ni	1.000	+/-	28.912
Co	1.000	+/-	39.414
Fe	4127.079	+/-	132.935
Mn	1.000	+/-	60.934
Cr	30.386	+/-	17.807
V	1.000	+/-	20.268
Ti	1.000	+/-	94.799
Ca	15651.137	+/-	283.132
K	2097.839	+/-	181.074
Al	793.661	+/-	434.994
P	495.169	+/-	79.098
Si	5795.907	+/-	297.622
Cl	2483.554	+/-	52.936
S	9809.247	+/-	168.826
Mg	1.000	+/-	5618.677

mRFA -Ergebnisse

XL3t-69288

Reading No 5
Mode Mining
Time 2017-05-08 15:15
Duration 120.40
Units ppm
Sigma Value 2
Sequence Final
Flags
INV NR Gm146
OBJEKT TAFELGEMAELEN
MATERIAL HOLZ METALL FASSUNG
ANALYSESTELLE P5 POKAL VORNE
MESSAUFBAU STATIV ANLIEGEND
FILTER m30lo30hi30li30
User Login Raquet

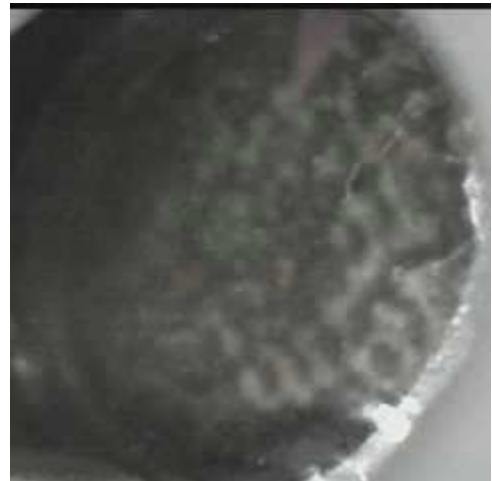


	ppm	+/-	Error
Ce	-339.000	+/-	109.314
La	1.000	+/-	49.713
Ba	1.000	+/-	53.214
Sb	1.000	+/-	17.659
Sn	373.340	+/-	19.573
Cd	13.637	+/-	7.289
Ag	1035.967	+/-	23.961
Bal	917175.625	+/-	640.273
Nb	22.473	+/-	16.480
Zr	1.000	+/-	56.792
Y	1.000	+/-	13.811
Sr	136.525	+/-	6.128
Rb	1.000	+/-	40.686
Th	1.000	+/-	803.049
Bi	1.000	+/-	635.162
Au	681.874	+/-	38.791
As	5425.400	+/-	150.811
Se	1.000	+/-	12.162
Pb	23361.082	+/-	341.557
Hg	1.000	+/-	11.153
Zn	68.165	+/-	14.159
Cu	4976.769	+/-	105.663
Ni	1.000	+/-	30.597
Co	1.000	+/-	38.707
Fe	3511.139	+/-	124.086
Mn	68.160	+/-	66.639
Cr	30.184	+/-	18.698
V	1.000	+/-	14.666
Ti	1.000	+/-	78.258
Ca	20720.828	+/-	351.238
K	3051.331	+/-	196.703
Al	1.000	+/-	693.556
P	2289.394	+/-	104.008
Si	6190.580	+/-	316.139
Cl	2308.146	+/-	50.388
S	8559.345	+/-	148.916
Mg	1.000	+/-	5010.856

mRFA -Ergebnisse

XL3t-69288

Reading No 6
Mode Mining
Time 2017-05-08 15:20
Duration 120.83
Units ppm
Sigma Value 2
Sequence Final
Flags
INV NR Gm146
OBJEKT TAFELGEMAELENDE
MATERIAL HOLZ METALL FASSUNG
ANALYSESTELLE P6 KRAGEN KOENIG BROKAT
MESSAUFBAU STATIV ANLIEGEND
FILTER m30lo30hi30li30
User Login Raquet



	ppm	+/-	Error
Ce	-339.000	+/-	120.369
La	1.000	+/-	55.387
Ba	1.000	+/-	58.668
Sb	1.000	+/-	18.923
Sn	7107.375	+/-	106.708
Cd	75.732	+/-	10.358
Ag	120.822	+/-	8.868
Bal	871024.313	+/-	1026.352
Nb	26.980	+/-	18.992
Zr	1.000	+/-	64.969
Y	1.000	+/-	16.049
Sr	98.363	+/-	6.189
Rb	1.000	+/-	31.253
Th	1.000	+/-	925.695
Bi	1.000	+/-	823.278
Au	1.000	+/-	25.694
As	3563.095	+/-	154.768
Se	1.000	+/-	13.212
Pb	26238.691	+/-	410.315
Hg	1.000	+/-	15.313
Zn	42.585	+/-	13.871
Cu	3735.242	+/-	95.276
Ni	1.000	+/-	35.185
Co	1.000	+/-	32.152
Fe	1260.453	+/-	86.768
Mn	1.000	+/-	70.061
Cr	1.000	+/-	29.077
V	1.000	+/-	16.247
Ti	1.000	+/-	85.416
Ca	63768.387	+/-	979.095
K	4078.076	+/-	263.261
Al	682.642	+/-	605.279
P	1.000	+/-	92.816
Si	7018.198	+/-	386.569
Cl	2185.785	+/-	54.411
S	8973.210	+/-	166.326
Mg	1.000	+/-	5877.133

mRFA -Ergebnisse

XL3t-69288

Reading No 7
Mode Mining
Time 2017-05-08 15:28
Duration 120.40
Units ppm
Sigma Value 2
Sequence Final
Flags
INV NR Gm146
OBJEKT TAFELGEMAELENDE
MATERIAL HOLZ METALL FASSUNG
ANALYSESTELLE P7 PRESSBROKAT
MESSAUFBAU STATIV ANLIEGEND
FILTER m30lo30hi30li30
User Login Raquet



	ppm	+/-	Error
Ce	-339.000	+/-	352.966
La	1.000	+/-	139.461
Ba	1.000	+/-	109.886
Sb	1.000	+/-	42.367
Sn	10625.658	+/-	226.045
Cd	62.263	+/-	16.169
Ag	322.145	+/-	19.156
Bal	801860.250	+/-	2346.277
Nb	79.353	+/-	46.580
Zr	1.000	+/-	146.384
Y	1.000	+/-	37.892
Sr	69.997	+/-	10.340
Rb	1.000	+/-	85.845
Th	1.000	+/-	2151.185
Bi	1.000	+/-	1535.583
Au	1.000	+/-	50.727
As	9375.175	+/-	343.820
Se	1.000	+/-	20.406
Pb	66132.328	+/-	1326.084
Hg	1.000	+/-	30.030
Zn	84.489	+/-	27.955
Cu	17908.279	+/-	390.016
Ni	1.000	+/-	69.295
Co	1.000	+/-	60.969
Fe	4677.075	+/-	191.637
Mn	1.000	+/-	152.966
Cr	1.000	+/-	28.568
V	1.000	+/-	29.505
Ti	1.000	+/-	156.085
Ca	28193.637	+/-	598.498
K	17957.170	+/-	525.297
Al	2564.781	+/-	811.036
P	1219.751	+/-	135.427
Si	11383.481	+/-	510.678
Cl	5222.083	+/-	123.147
S	22262.016	+/-	459.862
Mg	1.000	+/-	9594.522

mRFA -Ergebnisse

XL3t-69288

Reading No 8
Mode Mining
Time 2017-05-08 15:33
Duration 120.11
Units ppm
Sigma Value 2
Sequence Final
Flags
INV NR Gm146
OBJEKT TAFELGEMAELEN
MATERIAL HOLZ METALL FASSUNG
ANALYSESTELLE P8 PRESSBROKAT
MESSAUFBAU STATIV ANLIEGEND
FILTER m30lo30hi30li30
User Login Raquet



	ppm	+/-	Error
Ce	9.374	+/-	208.904
La	112.198	+/-	94.658
Ba	1.000	+/-	158.096
Sb	1.000	+/-	33.589
Sn	5305.032	+/-	119.284
Cd	49.178	+/-	14.343
Ag	13.262	+/-	8.386
Bal	843523.688	+/-	1764.536
Nb	75.488	+/-	44.936
Zr	1.000	+/-	139.461
Y	1.000	+/-	35.864
Sr	66.589	+/-	9.595
Rb	1.000	+/-	87.928
Th	1.000	+/-	2559.962
Bi	1.000	+/-	1438.395
Au	1.000	+/-	43.353
As	9279.133	+/-	331.499
Se	1.000	+/-	17.850
Pb	68315.531	+/-	1387.539
Hg	1.000	+/-	26.094
Zn	103.748	+/-	21.014
Cu	8399.959	+/-	211.821
Ni	49.648	+/-	46.736
Co	1.000	+/-	73.362
Fe	9709.386	+/-	292.253
Mn	267.558	+/-	93.395
Cr	42.599	+/-	27.563
V	1.000	+/-	40.979
Ti	244.345	+/-	142.474
Ca	12779.141	+/-	336.114
K	7699.300	+/-	320.424
Al	2005.290	+/-	628.009
P	792.788	+/-	106.966
Si	10407.169	+/-	460.994
Cl	3382.598	+/-	92.292
S	17026.865	+/-	404.370
Mg	1.000	+/-	10879.856