

mRFA -Ergebnisse

XL3t-69288

Reading No 1
Mode Mining
Time 2017-05-09 10:56
Duration 121.66
Units ppm
Sigma Value 2
Sequence Final
Flags
INV NR **Gm144**
OBJEKT TAFELGEMAELENDE
MATERIAL HOLZ METALL FASSUNG
ANALYSESTELLE P1 GOLDGRUND BILD
MESSAUFBAU STATIV ANLIEGEND
FILTER m30lo30hi30li30
User Login Raquet



	ppm	+/-	Error
Ce	-339.000	+/-	151.726
La	1.000	+/-	69.580
Ba	1.000	+/-	73.713
Sb	1.000	+/-	23.723
Sn	1450.906	+/-	41.682
Cd	14.724	+/-	9.798
Ag	28.742	+/-	7.241
Bal	859753.625	+/-	1347.979
Nb	54.800	+/-	33.764
Zr	1.000	+/-	107.802
Y	1.000	+/-	27.829
Sr	136.729	+/-	9.091
Rb	1.000	+/-	87.283
Th	1.000	+/-	1558.100
Bi	1.000	+/-	1123.279
Au	3281.384	+/-	99.639
As	11690.576	+/-	295.224
Se	1.000	+/-	20.711
Pb	49876.313	+/-	867.150
Hg	1.000	+/-	20.373
Zn	205.310	+/-	21.014
Cu	282.734	+/-	28.190
Ni	1.000	+/-	56.270
Co	1.000	+/-	50.941
Fe	836.153	+/-	83.088
Mn	1.000	+/-	125.483
Cr	48.709	+/-	25.006
V	1.000	+/-	17.746
Ti	1.000	+/-	91.820
Ca	5038.518	+/-	186.656
K	762.604	+/-	148.001
Al	1602.055	+/-	576.610
P	33346.496	+/-	670.822
Si	5238.377	+/-	410.077
Cl	2117.591	+/-	55.780
S	24233.578	+/-	478.051
Mg	1.000	+/-	5971.711

mRFA -Ergebnisse

XL3t-69288

Reading No 2
Mode Mining
Time 2017-05-09 11:04
Duration 121.30
Units ppm
Sigma Value 2
Sequence Final
Flags
INV NR **Gm144**
OBJEKT TAFELGEMAELEN
MATERIAL HOLZ METALL FASSUNG
ANALYSESTELLE P2 ZIERSAUM
MESSAUFBAU STATIV ANLIEGEND
FILTER m30lo30hi30li30
User Login Raquet



	ppm	+/-	Error
Ce	-339.000	+/-	143.023
La	1.000	+/-	64.921
Ba	1.000	+/-	69.256
Sb	1.000	+/-	32.169
Sn	322.624	+/-	19.339
Cd	1.000	+/-	9.568
Ag	1.000	+/-	5.878
Bal	851443.375	+/-	1248.956
Nb	50.766	+/-	25.289
Zr	1.000	+/-	83.542
Y	1.000	+/-	20.926
Sr	205.610	+/-	9.058
Rb	1.000	+/-	49.666
Th	1.000	+/-	1182.221
Bi	1.000	+/-	903.986
Au	1.000	+/-	34.977
As	7699.564	+/-	219.929
Se	1.000	+/-	17.571
Pb	38535.402	+/-	621.603
Hg	1.000	+/-	15.955
Zn	175.554	+/-	21.615
Cu	11941.756	+/-	226.785
Ni	1.000	+/-	36.371
Co	1.000	+/-	35.871
Fe	799.625	+/-	74.096
Mn	84.816	+/-	74.318
Cr	1.000	+/-	22.651
V	1.000	+/-	19.792
Ti	1.000	+/-	102.468
Ca	35898.820	+/-	593.682
K	3060.816	+/-	182.112
Al	2390.677	+/-	698.837
P	6575.814	+/-	204.138
Si	13810.009	+/-	535.470
Cl	2775.326	+/-	64.122
S	24229.412	+/-	407.375
Mg	1.000	+/-	12861.157

mRFA -Ergebnisse

XL3t-69288

Reading No 3
Mode Mining
Time 2017-05-09 11:10
Duration 121.41
Units ppm
Sigma Value 2
Sequence Final
Flags
INV NR **Gm144**
OBJEKT TAFELGEMAELENDE
MATERIAL HOLZ METALL FASSUNG
ANALYSESTELLE P3 ZIERSAUM
MESSAUFBAU STATIV ANLIEGEND
FILTER m30lo30hi30li30
User Login Raquet



	ppm	+/-	Error
Ce	-82.682	+/-	229.923
La	123.425	+/-	104.913
Ba	1.000	+/-	177.066
Sb	1.000	+/-	35.035
Sn	691.738	+/-	36.864
Cd	1.000	+/-	12.621
Ag	1.000	+/-	12.561
Bal	817635.375	+/-	2211.889
Nb	75.502	+/-	50.457
Zr	1.000	+/-	157.196
Y	1.000	+/-	41.266
Sr	125.460	+/-	11.908
Rb	1.000	+/-	101.367
Th	1.000	+/-	2594.857
Bi	1.000	+/-	1619.412
Au	513.271	+/-	70.432
As	12407.288	+/-	406.685
Se	1.000	+/-	29.240
Pb	71976.578	+/-	1535.420
Hg	1.000	+/-	27.646
Zn	190.698	+/-	34.631
Cu	27913.551	+/-	574.335
Ni	1.000	+/-	47.196
Co	48.120	+/-	37.984
Fe	279.546	+/-	73.138
Mn	153.954	+/-	90.859
Cr	1.000	+/-	33.244
V	1.000	+/-	22.774
Ti	1.000	+/-	116.300
Ca	15093.328	+/-	378.680
K	1991.374	+/-	196.970
Al	1810.156	+/-	799.760
P	10462.111	+/-	312.253
Si	9589.439	+/-	513.878
Cl	2993.714	+/-	85.879
S	25668.090	+/-	584.763
Mg	1.000	+/-	9503.144

mRFA -Ergebnisse

XL3t-69288

Reading No 4
Mode Mining
Time 2017-05-09 11:15
Duration 120.45
Units ppm
Sigma Value 2
Sequence Final
Flags
INV NR **Gm144**
OBJEKT TAFELGEMAELENDE
MATERIAL HOLZ METALL FASSUNG
ANALYSESTELLE P4 ZIERSAUM
MESSAUFBAU STATIV ANLIEGEND
FILTER m30lo30hi30li30
User Login Raquet



	ppm	+/-	Error
Ce	-339.000	+/-	215.916
La	1.000	+/-	94.224
Ba	1.000	+/-	117.732
Sb	1.000	+/-	31.712
Sn	757.593	+/-	35.969
Cd	1.000	+/-	11.318
Ag	1.000	+/-	12.331
Bal	829219.125	+/-	2013.008
Nb	91.230	+/-	49.051
Zr	1.000	+/-	151.811
Y	1.000	+/-	39.751
Sr	126.983	+/-	11.449
Rb	1.000	+/-	80.427
Th	1.000	+/-	2038.079
Bi	1.000	+/-	1558.136
Au	526.994	+/-	68.210
As	12841.495	+/-	380.021
Se	1.000	+/-	20.751
Pb	71240.898	+/-	1380.352
Hg	1.000	+/-	26.336
Zn	174.582	+/-	28.529
Cu	16519.955	+/-	335.900
Ni	1.000	+/-	73.827
Co	83.786	+/-	38.071
Fe	139.646	+/-	68.224
Mn	190.115	+/-	92.841
Cr	1.000	+/-	39.843
V	1.000	+/-	24.307
Ti	1.000	+/-	104.552
Ca	13519.729	+/-	322.596
K	1959.711	+/-	176.751
Al	1999.993	+/-	689.923
P	12197.735	+/-	309.705
Si	9193.272	+/-	453.598
Cl	2821.957	+/-	72.946
S	26395.143	+/-	535.158
Mg	1.000	+/-	10039.537

mRFA -Ergebnisse

XL3t-69288

Reading No 5
Mode Mining
Time 2017-05-09 11:22
Duration 120.19
Units ppm
Sigma Value 2
Sequence Final
Flags
INV NR **Gm144**
OBJEKT TAFELGEMAELENDE
MATERIAL HOLZ METALL FASSUNG
ANALYSESTELLE P5 PRESSBROKAT
MESSAUFBAU STATIV ANLIEGEND
FILTER m30lo30hi30li30
User Login Raquet



	ppm	+/-	Error
Ce	-339.000	+/-	280.121
La	1.000	+/-	127.194
Ba	1.000	+/-	134.504
Sb	1.000	+/-	37.787
Sn	34836.109	+/-	641.038
Cd	158.917	+/-	22.730
Ag	40.541	+/-	11.467
Bal	805568.875	+/-	2277.772
Nb	36.357	+/-	34.026
Zr	1.000	+/-	111.539
Y	1.000	+/-	28.964
Sr	128.929	+/-	10.317
Rb	1.000	+/-	68.194
Th	1.000	+/-	1547.974
Bi	1.000	+/-	1197.155
Au	2985.378	+/-	102.528
As	1.000	+/-	222.793
Se	1.000	+/-	21.405
Pb	42265.836	+/-	800.285
Hg	108.590	+/-	21.818
Zn	171.919	+/-	28.100
Cu	2497.580	+/-	93.246
Ni	1.000	+/-	59.611
Co	1.000	+/-	55.229
Fe	460.516	+/-	92.178
Mn	1.000	+/-	134.459
Cr	78.237	+/-	28.866
V	1.000	+/-	23.538
Ti	1.000	+/-	121.565
Ca	50076.930	+/-	1004.765
K	1682.320	+/-	306.338
Al	1507.355	+/-	1000.606
P	7434.612	+/-	263.649
Si	10610.237	+/-	611.990
Cl	2582.036	+/-	79.645
S	13022.741	+/-	293.807
Mg	23745.971	+/-	11760.480

mRFA -Ergebnisse

XL3t-69288

Reading No 6
Mode Mining
Time 2017-05-09 11:27
Duration 120.66
Units ppm
Sigma Value 2
Sequence Final
Flags
INV NR **Gm144**
OBJEKT TAFELGEMAELEN
MATERIAL HOLZ METALL FASSUNG
ANALYSESTELLE P6 STRAHLENNIMBUS MARIA
MESSAUFBAU STATIV ANLIEGEND
FILTER m30lo30hi30li30
User Login Raquet

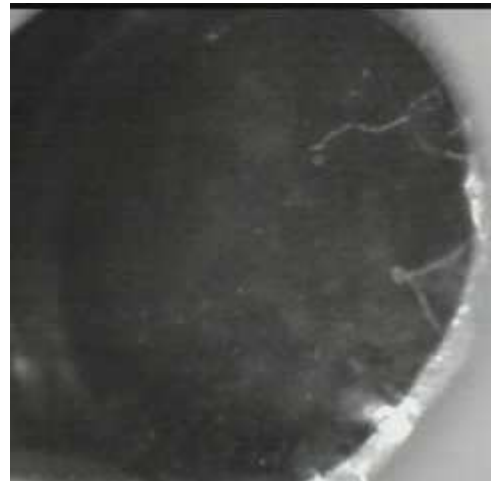


	ppm	+/-	Error
Ce	-339.000	+/-	125.784
La	1.000	+/-	57.837
Ba	1.000	+/-	60.956
Sb	1.000	+/-	20.049
Sn	545.120	+/-	22.182
Cd	15.104	+/-	8.188
Ag	1.000	+/-	6.315
Bal	869109.875	+/-	1124.064
Nb	47.889	+/-	26.990
Zr	1.000	+/-	88.093
Y	1.000	+/-	22.089
Sr	129.524	+/-	7.697
Rb	1.000	+/-	59.457
Th	1.000	+/-	1318.244
Bi	1.000	+/-	936.654
Au	719.811	+/-	50.441
As	9334.798	+/-	242.326
Se	1.000	+/-	14.701
Pb	40751.777	+/-	678.853
Hg	1.000	+/-	16.329
Zn	183.372	+/-	16.955
Cu	1069.727	+/-	45.615
Ni	1.000	+/-	35.927
Co	1.000	+/-	46.094
Fe	2553.207	+/-	119.505
Mn	111.655	+/-	74.647
Cr	1.000	+/-	28.657
V	1.000	+/-	18.981
Ti	1.000	+/-	105.720
Ca	10071.535	+/-	242.765
K	1947.947	+/-	159.484
Al	2757.131	+/-	644.186
P	14283.049	+/-	332.911
Si	16478.486	+/-	592.069
Cl	2673.178	+/-	65.851
S	27216.756	+/-	511.739
Mg	1.000	+/-	6551.252

mRFA -Ergebnisse

XL3t-69288

Reading No 7
Mode Mining
Time 2017-05-09 11:34
Duration 121.26
Units ppm
Sigma Value 2
Sequence Final
Flags
INV NR **Gm144**
OBJEKT TAFELGEMAELEN
MATERIAL HOLZ METALL FASSUNG
ANALYSESTELLE P7 RUECKLAGE SCHLEIERBRETT
MESSAUFBAU FREIHAND 3cm ABSTAND
FILTER m30lo30hi30li30
User Login Raquet

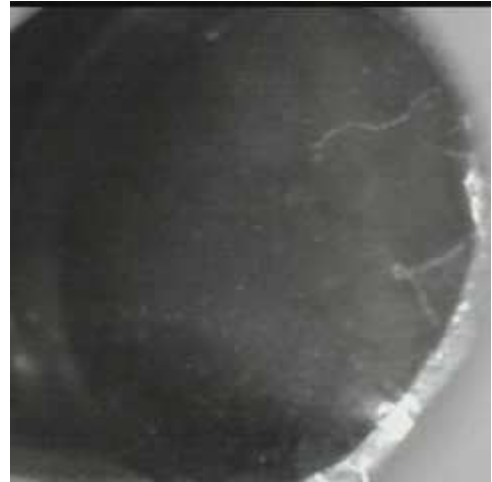


	ppm	+/-	Error
Ce	-339.000	+/-	99.819
La	1.000	+/-	46.029
Ba	1.000	+/-	50.160
Sb	1.000	+/-	19.428
Sn	16.396	+/-	10.271
Cd	8.527	+/-	7.238
Ag	46.840	+/-	7.066
Bal	863200.125	+/-	906.070
Nb	3.930	+/-	3.804
Zr	1.000	+/-	11.905
Y	1.000	+/-	2.622
Sr	149.127	+/-	5.046
Rb	5.380	+/-	5.316
Th	1.000	+/-	189.913
Bi	1.000	+/-	134.763
Au	15.270	+/-	8.872
As	197.734	+/-	25.353
Se	1.000	+/-	4.207
Pb	728.624	+/-	21.918
Hg	1.000	+/-	2.925
Zn	28.532	+/-	9.659
Cu	1.000	+/-	25.553
Ni	1.000	+/-	34.097
Co	1.000	+/-	44.937
Fe	340.940	+/-	55.447
Mn	1.000	+/-	60.685
Cr	18.492	+/-	17.254
V	1.000	+/-	23.611
Ti	1.000	+/-	113.098
Ca	125983.320	+/-	1024.832
K	1148.172	+/-	146.088
Al	1.000	+/-	726.572
P	1.000	+/-	88.886
Si	6121.664	+/-	421.158
Cl	546.585	+/-	37.682
S	1440.298	+/-	52.434
Mg	1.000	+/-	8345.060

mRFA -Ergebnisse

XL3t-69288

Reading No 8
Mode Mining
Time 2017-05-09 11:39
Duration 120.53
Units ppm
Sigma Value 2
Sequence Final
Flags
INV NR **Gm144**
OBJEKT TAFELGEMAELEN
MATERIAL HOLZ METALL FASSUNG
ANALYSESTELLE P7 RUECKLAGE SCHLEIERBRETT
MESSAUFBAU FREIHAND 3cm ABSTAND
FILTER m30lo30hi30li30
User Login Raquet

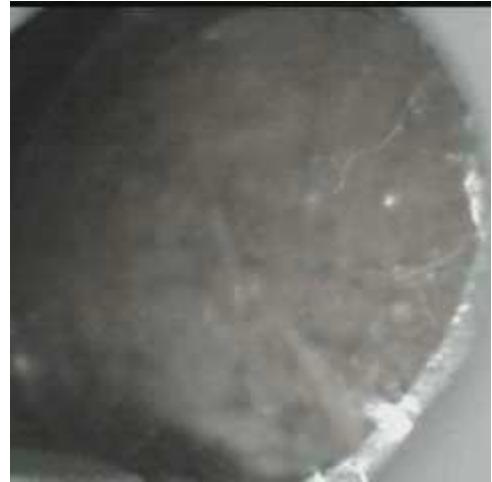


	ppm	+/-	Error
Ce	-339.000	+/-	114.869
La	1.000	+/-	52.940
Ba	1.000	+/-	56.934
Sb	1.000	+/-	28.008
Sn	619.865	+/-	25.596
Cd	19.922	+/-	8.484
Ag	375.137	+/-	16.550
Bal	870024.563	+/-	916.044
Nb	14.984	+/-	10.195
Zr	1.000	+/-	36.597
Y	1.000	+/-	8.674
Sr	107.519	+/-	4.866
Rb	1.000	+/-	21.827
Th	1.000	+/-	534.565
Bi	1.000	+/-	514.402
Au	478.086	+/-	30.008
As	2483.414	+/-	94.861
Se	1.000	+/-	9.949
Pb	11639.861	+/-	167.298
Hg	53.856	+/-	12.231
Zn	37.149	+/-	11.076
Cu	481.866	+/-	28.482
Ni	1.000	+/-	30.692
Co	1.000	+/-	26.358
Fe	622.531	+/-	60.962
Mn	1.000	+/-	59.347
Cr	1.000	+/-	19.794
V	1.000	+/-	17.520
Ti	1.000	+/-	84.798
Ca	105909.188	+/-	1352.404
K	784.236	+/-	138.805
Al	1.000	+/-	737.960
P	138.645	+/-	101.337
Si	2668.357	+/-	336.988
Cl	467.579	+/-	35.347
S	3073.212	+/-	77.536
Mg	1.000	+/-	7798.324

mRFA -Ergebnisse

XL3t-69288

Reading No 9
Mode Mining
Time 2017-05-09 11:47
Duration 122.07
Units ppm
Sigma Value 2
Sequence Final
Flags
INV NR **Gm144**
OBJEKT TAFELGEMAELENDE
MATERIAL HOLZ METALL FASSUNG
ANALYSESTELLE P9 GESICHT LUKAS
MESSAUFBAU STATIV ANLIEGEND
FILTER m30lo30hi30li30
User Login Raquet



	ppm	+/-	Error
Ce	608.002	+/-	477.353
La	231.350	+/-	213.697
Ba	1.000	+/-	221.987
Sb	1.000	+/-	65.708
Sn	51622.734	+/-	1412.845
Cd	198.510	+/-	40.286
Ag	1.000	+/-	19.831
Bal	714923.250	+/-	5260.428
Nb	122.028	+/-	89.271
Zr	1.000	+/-	264.135
Y	1.000	+/-	71.653
Sr	1.000	+/-	16.903
Rb	1.000	+/-	151.477
Th	1.000	+/-	4480.144
Bi	1.000	+/-	2624.511
Au	1.000	+/-	84.903
As	12855.939	+/-	570.605
Se	1.000	+/-	40.782
Pb	120241.219	+/-	3076.860
Hg	568.184	+/-	64.174
Zn	12115.914	+/-	329.817
Cu	1638.007	+/-	87.600
Ni	1.000	+/-	92.731
Co	1.000	+/-	87.468
Fe	6201.648	+/-	282.284
Mn	386.196	+/-	146.201
Cr	76.154	+/-	40.957
V	1.000	+/-	51.419
Ti	1.000	+/-	215.654
Ca	7956.279	+/-	376.831
K	2829.212	+/-	312.431
Al	5480.557	+/-	1119.837
P	3390.782	+/-	196.243
Si	18354.262	+/-	748.461
Cl	4570.554	+/-	145.252
S	35289.262	+/-	970.711
Mg	1.000	+/-	17277.188

mRFA -Ergebnisse

XL3t-69288

Reading No 10
Mode Mining
Time 2017-05-09 11:52
Duration 121.45
Units ppm
Sigma Value 2
Sequence Final
Flags
INV NR **Gm144**
OBJEKT TAFELGEMAELENDE
MATERIAL HOLZ METALL FASSUNG
ANALYSESTELLE P10 STIRNPLATTE
MESSAUFBAU STATIV ANLIEGEND
FILTER m30lo30hi30li30
User Login Raquet



	ppm	+/-	Error
Ce	-339.000	+/-	105.741
La	1.000	+/-	48.168
Ba	1.000	+/-	51.441
Sb	1.000	+/-	19.940
Sn	292.498	+/-	15.330
Cd	17.930	+/-	7.178
Ag	32.470	+/-	5.626
Bal	878535.688	+/-	876.943
Nb	29.264	+/-	16.416
Zr	1.000	+/-	56.362
Y	1.000	+/-	13.809
Sr	211.521	+/-	7.395
Rb	1.000	+/-	43.376
Th	1.000	+/-	795.929
Bi	1.000	+/-	705.794
Au	1980.627	+/-	59.266
As	6849.156	+/-	162.402
Se	1.000	+/-	14.190
Pb	23362.760	+/-	342.515
Hg	1.000	+/-	11.668
Zn	143.954	+/-	15.419
Cu	957.606	+/-	38.387
Ni	1.000	+/-	31.072
Co	1.000	+/-	38.072
Fe	3798.296	+/-	129.951
Mn	213.988	+/-	71.224
Cr	26.417	+/-	22.805
V	1.000	+/-	24.950
Ti	1.000	+/-	92.808
Ca	10490.386	+/-	233.305
K	2298.870	+/-	164.328
Al	3262.609	+/-	613.761
P	20694.330	+/-	385.904
Si	17222.947	+/-	571.081
Cl	3019.067	+/-	62.996
S	26559.699	+/-	426.420
Mg	1.000	+/-	10357.000

mRFA -Ergebnisse

XL3t-69288

Reading No 11
Mode Mining
Time 2017-05-09 11:58
Duration 121.55
Units ppm
Sigma Value 2
Sequence Final
Flags
INV NR **Gm144**
OBJEKT TAFELGEMAELEN
MATERIAL HOLZ METALL FASSUNG
ANALYSESTELLE P11 MANTEL DIOKLETIAN
MESSAUFBAU STATIV ANLIEGEND
FILTER m30lo30hi30li30
User Login Raquet

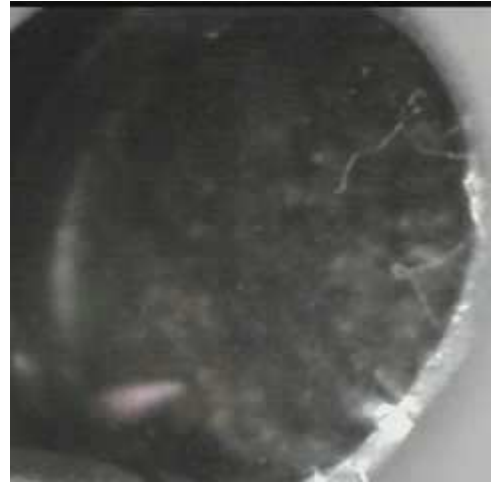


	ppm	+/-	Error
Ce	-339.000	+/-	167.767
La	1.000	+/-	76.834
Ba	1.000	+/-	81.314
Sb	1.000	+/-	26.442
Sn	1559.908	+/-	45.588
Cd	1.000	+/-	15.350
Ag	53.517	+/-	8.909
Bal	870981.375	+/-	1295.885
Nb	38.494	+/-	32.154
Zr	1.000	+/-	104.188
Y	1.000	+/-	26.802
Sr	126.525	+/-	8.875
Rb	79.644	+/-	54.618
Th	1.000	+/-	1573.438
Bi	1.000	+/-	1085.661
Au	7096.185	+/-	161.953
As	10792.679	+/-	282.623
Se	1.000	+/-	20.332
Pb	44993.547	+/-	815.293
Hg	1.000	+/-	21.086
Zn	246.319	+/-	26.524
Cu	1406.949	+/-	56.386
Ni	1.000	+/-	40.408
Co	1.000	+/-	46.104
Fe	2907.485	+/-	135.918
Mn	1.000	+/-	110.295
Cr	97.362	+/-	25.261
V	1.000	+/-	28.281
Ti	1.000	+/-	103.705
Ca	4262.223	+/-	163.489
K	2346.387	+/-	178.995
Al	2336.849	+/-	583.903
P	22640.131	+/-	485.790
Si	9459.841	+/-	455.501
Cl	2613.333	+/-	65.791
S	15961.295	+/-	327.693
Mg	1.000	+/-	5911.033

mRFA -Ergebnisse

XL3t-69288

Reading No 12
Mode Mining
Time 2017-05-09 12:05
Duration 121.10
Units ppm
Sigma Value 2
Sequence Final
Flags
INV NR **Gm144**
OBJEKT TAFELGEMAELEN
MATERIAL HOLZ METALL FASSUNG
ANALYSESTELLE P12 PRESSBROKAT SCHUETZE GRUEN
MESSAUFBAU STATIV ANLIEGEND
FILTER m30lo30hi30li30
User Login Raquet



	ppm	+/-	Error
Ce	-339.000	+/-	168.093
La	1.000	+/-	76.641
Ba	1.000	+/-	81.316
Sb	1.000	+/-	24.265
Sn	18709.654	+/-	258.333
Cd	167.284	+/-	15.258
Ag	19.181	+/-	7.016
Bal	890937.188	+/-	946.244
Nb	1.000	+/-	19.190
Zr	1.000	+/-	54.714
Y	1.000	+/-	13.470
Sr	149.388	+/-	7.009
Rb	1.000	+/-	28.557
Th	1.000	+/-	782.045
Bi	1.000	+/-	718.981
Au	640.811	+/-	37.888
As	1.000	+/-	179.941
Se	1.000	+/-	13.670
Pb	16855.246	+/-	277.966
Hg	59.554	+/-	12.481
Zn	84.605	+/-	16.874
Cu	1871.311	+/-	65.621
Ni	1.000	+/-	43.614
Co	1.000	+/-	32.923
Fe	651.114	+/-	77.484
Mn	1.000	+/-	84.931
Cr	39.504	+/-	21.938
V	1.000	+/-	17.861
Ti	1.000	+/-	93.354
Ca	38498.289	+/-	742.141
K	4002.896	+/-	339.000
Al	1906.555	+/-	735.577
P	1639.117	+/-	135.405
Si	11278.530	+/-	529.615
Cl	2941.307	+/-	73.357
S	9548.433	+/-	192.182
Mg	1.000	+/-	7212.728

mRFA -Ergebnisse

XL3t-69288

Reading No 13
Mode Mining
Time 2017-05-09 12:09
Duration 121.76
Units ppm
Sigma Value 2
Sequence Final
Flags
INV NR **Gm144**
OBJEKT TAFELGEMAELEN
MATERIAL HOLZ METALL FASSUNG
ANALYSESTELLE P13 PRESSBROKAT SCHUETZE GELB
MESSAUFBAU STATIV ANLIEGEND
FILTER m30lo30hi30li30
User Login Raquet



	ppm	+/-	Error
Ce	-339.000	+/-	169.746
La	1.000	+/-	77.634
Ba	1.000	+/-	81.925
Sb	1.000	+/-	25.623
Sn	17269.416	+/-	265.175
Cd	128.024	+/-	15.455
Ag	879.749	+/-	26.474
Bal	873138.125	+/-	1207.232
Nb	1.000	+/-	19.934
Zr	1.000	+/-	63.524
Y	1.000	+/-	15.703
Sr	137.600	+/-	7.586
Rb	1.000	+/-	28.626
Th	1.000	+/-	903.736
Bi	1.000	+/-	833.730
Au	1.000	+/-	22.828
As	175.972	+/-	137.889
Se	1.000	+/-	15.547
Pb	17975.430	+/-	317.880
Hg	56.920	+/-	13.973
Zn	1.000	+/-	30.802
Cu	42226.852	+/-	703.732
Ni	1.000	+/-	45.166
Co	1.000	+/-	33.037
Fe	437.005	+/-	66.024
Mn	1.000	+/-	75.160
Cr	1.000	+/-	21.598
V	1.000	+/-	17.082
Ti	1.000	+/-	89.192
Ca	21210.346	+/-	460.088
K	2680.040	+/-	290.202
Al	2003.632	+/-	651.300
P	459.441	+/-	89.409
Si	10718.604	+/-	440.656
Cl	3827.074	+/-	78.025
S	6675.751	+/-	130.238
Mg	1.000	+/-	6651.970

mRFA -Ergebnisse

XL3t-69288

Reading No 14
Mode Mining
Time 2017-05-09 12:15
Duration 119.26
Units ppm
Sigma Value 2
Sequence Final
Flags
INV NR **Gm144**
OBJEKT TAFELGEMAELEN
MATERIAL HOLZ METALL FASSUNG
ANALYSESTELLE P14 RUECKLAGE SCHLEIERBRETT
MESSAUFBAU FREIHAND 3cm ABSTAND
FILTER m30lo30hi30li30
User Login Raquet



	ppm	+/-	Error
Ce	-339.000	+/-	225.797
La	1.000	+/-	104.092
Ba	1.000	+/-	110.836
Sb	1.000	+/-	37.901
Sn	795.624	+/-	46.240
Cd	1.000	+/-	20.963
Ag	488.704	+/-	29.999
Bal	915261.563	+/-	865.539
Nb	1.000	+/-	18.230
Zr	1.000	+/-	56.583
Y	1.000	+/-	13.999
Sr	191.555	+/-	9.312
Rb	1.000	+/-	27.726
Th	1.000	+/-	808.317
Bi	1.000	+/-	707.306
Au	429.048	+/-	42.769
As	2106.233	+/-	138.647
Se	1.000	+/-	15.718
Pb	12376.434	+/-	256.610
Hg	96.858	+/-	18.403
Zn	46.503	+/-	18.159
Cu	382.050	+/-	43.554
Ni	1.000	+/-	60.834
Co	1.000	+/-	39.733
Fe	667.336	+/-	95.986
Mn	1.000	+/-	107.912
Cr	1.000	+/-	34.770
V	1.000	+/-	27.990
Ti	1.000	+/-	137.031
Ca	58719.262	+/-	1104.769
K	644.040	+/-	232.450
Al	1.000	+/-	1129.425
P	800.613	+/-	176.844
Si	2204.036	+/-	530.362
Cl	695.550	+/-	69.897
S	4094.669	+/-	129.963
Mg	1.000	+/-	14321.185

mRFA -Ergebnisse

XL3t-69288

Reading No 16
Mode Mining
Time 2017-05-09 12:24
Duration 122.26
Units ppm
Sigma Value 2
Sequence Final
Flags
INV NR **Gm144**
OBJEKT TAFELGEMAELEN
MATERIAL HOLZ METALL FASSUNG
ANALYSESTELLE P15 RAHMEN
MESSAUFBAU STATIV ANLIEGEND
FILTER m30lo30hi30li30
User Login Raquet

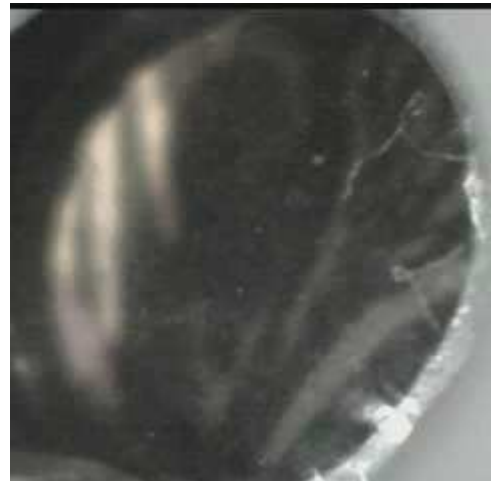


	ppm	+/-	Error
Ce	-339.000	+/-	53.387
La	1.000	+/-	24.524
Ba	1.000	+/-	26.613
Sb	10.110	+/-	9.859
Sn	8.401	+/-	5.198
Cd	11.192	+/-	3.884
Ag	17.780	+/-	2.936
Bal	787717.313	+/-	915.845
Nb	1.000	+/-	2.390
Zr	1.000	+/-	4.657
Y	1.000	+/-	1.000
Sr	127.184	+/-	3.112
Rb	10.581	+/-	3.249
Th	1.000	+/-	79.609
Bi	1.000	+/-	55.918
Au	1909.660	+/-	32.338
As	50.219	+/-	8.154
Se	1.000	+/-	3.737
Pb	134.620	+/-	6.588
Hg	1.000	+/-	2.561
Zn	75.945	+/-	9.648
Cu	13.048	+/-	9.156
Ni	1.000	+/-	16.588
Co	1.000	+/-	19.191
Fe	1555.784	+/-	57.436
Mn	1.000	+/-	44.748
Cr	60.682	+/-	15.908
V	1.000	+/-	29.028
Ti	470.464	+/-	153.692
Ca	103400.852	+/-	580.988
K	1511.501	+/-	111.168
Al	12753.200	+/-	955.271
P	41125.949	+/-	369.564
Si	35827.727	+/-	753.335
Cl	820.161	+/-	26.973
S	12387.702	+/-	120.119
Mg	1.000	+/-	5939.504

mRFA -Ergebnisse

XL3t-69288

Reading No 17
Mode Mining
Time 2017-05-09 12:35
Duration 120.74
Units ppm
Sigma Value 2
Sequence Final
Flags
INV NR **Gm144**
OBJEKT TAFELGEMAELEN
MATERIAL HOLZ METALL FASSUNG
ANALYSESTELLE P16 SCHWARZZEICHNUNG
MESSAUFBAU STATIV ANLIEGEND
FILTER m30lo30hi30li30
User Login Raquet



	ppm	+/-	Error
Ce	-339.000	+/-	113.139
La	1.000	+/-	51.913
Ba	1.000	+/-	56.111
Sb	1.000	+/-	23.078
Sn	17.492	+/-	10.594
Cd	1.000	+/-	9.475
Ag	9.161	+/-	5.228
Bal	678106.938	+/-	1731.873
Nb	1.000	+/-	2.896
Zr	1.000	+/-	11.135
Y	1.000	+/-	2.352
Sr	515.145	+/-	9.069
Rb	18.701	+/-	6.434
Th	1.000	+/-	161.729
Bi	1.000	+/-	130.896
Au	3131.862	+/-	58.428
As	239.222	+/-	22.766
Se	1.000	+/-	7.238
Pb	687.755	+/-	19.406
Hg	1.000	+/-	5.375
Zn	122.709	+/-	16.103
Cu	252.395	+/-	21.495
Ni	1.000	+/-	28.888
Co	1.000	+/-	51.565
Fe	9510.088	+/-	179.432
Mn	120.693	+/-	71.861
Cr	72.366	+/-	28.730
V	34.128	+/-	28.356
Ti	602.782	+/-	156.051
Ca	208691.313	+/-	1306.083
K	2806.406	+/-	191.007
Al	9890.036	+/-	1622.855
P	27607.387	+/-	401.186
Si	23737.895	+/-	871.235
Cl	1029.144	+/-	47.484
S	11920.324	+/-	155.191
Mg	20876.063	+/-	14906.412

mRFA -Ergebnisse

XL3t-69288

Reading No 18
Mode Mining
Time 2017-05-09 12:39
Duration 121.42
Units ppm
Sigma Value 2
Sequence Final
Flags
INV NR **Gm144**
OBJEKT TAFELGEMAELEN
MATERIAL HOLZ METALL FASSUNG
ANALYSESTELLE P17 NIMBUS KATHARINA
MESSAUFBAU STATIV ANLIEGEND
FILTER m30lo30hi30li30
User Login Raquet



	ppm	+/-	Error
Ce	-339.000	+/-	95.882
La	1.000	+/-	44.502
Ba	1.000	+/-	47.347
Sb	1.000	+/-	19.315
Sn	1.000	+/-	10.753
Cd	1.000	+/-	9.595
Ag	11.569	+/-	4.537
Bal	647850.438	+/-	1607.299
Nb	1.000	+/-	2.144
Zr	1.000	+/-	8.345
Y	1.000	+/-	1.672
Sr	519.491	+/-	8.172
Rb	29.759	+/-	5.870
Th	1.000	+/-	148.777
Bi	1.000	+/-	94.686
Au	4639.975	+/-	65.510
As	63.767	+/-	12.897
Se	1.000	+/-	7.363
Pb	256.092	+/-	10.887
Hg	1.000	+/-	8.559
Zn	123.280	+/-	15.725
Cu	230.938	+/-	18.236
Ni	1.000	+/-	25.737
Co	1.000	+/-	40.588
Fe	7160.858	+/-	137.937
Mn	123.697	+/-	63.389
Cr	90.866	+/-	28.722
V	1.000	+/-	35.520
Ti	477.403	+/-	149.139
Ca	232604.422	+/-	1300.628
K	1500.736	+/-	169.391
Al	14019.792	+/-	1887.440
P	56300.852	+/-	551.293
Si	16212.959	+/-	839.494
Cl	691.065	+/-	39.223
S	17092.061	+/-	185.705
Mg	1.000	+/-	22769.387

mRFA -Ergebnisse

XL3t-69288

Reading No 19
Mode Mining
Time 2017-05-09 12:43
Duration 122.20
Units ppm
Sigma Value 2
Sequence Final
Flags
INV NR **Gm144**
OBJEKT TAFELGEMAELEN
MATERIAL HOLZ METALL FASSUNG
ANALYSESTELLE P18 RUECKLAGE SCHLEIERBRETT
MESSAUFBAU FREIHAND 3cm ABSTAND
FILTER m30lo30hi30li30
User Login Raquet



	ppm	+/-	Error
Ce	-339.000	+/-	94.016
La	1.000	+/-	43.032
Ba	1.000	+/-	45.905
Sb	1.000	+/-	15.305
Sn	1218.445	+/-	27.783
Cd	24.816	+/-	6.870
Ag	577.986	+/-	15.847
Bal	819116.188	+/-	1195.391
Nb	20.827	+/-	14.577
Zr	1.000	+/-	50.779
Y	1.000	+/-	12.228
Sr	144.983	+/-	6.160
Rb	1.000	+/-	35.687
Th	1.000	+/-	734.769
Bi	1.000	+/-	573.614
Au	488.127	+/-	36.073
As	5531.182	+/-	141.087
Se	1.000	+/-	11.483
Pb	20366.732	+/-	281.830
Hg	52.788	+/-	16.927
Zn	206.584	+/-	16.596
Cu	735.109	+/-	33.497
Ni	1.000	+/-	32.201
Co	176.346	+/-	37.922
Fe	1496.522	+/-	83.152
Mn	1.000	+/-	61.750
Cr	30.538	+/-	18.950
V	1.000	+/-	15.713
Ti	1.000	+/-	82.671
Ca	83157.078	+/-	1030.048
K	2933.142	+/-	199.951
Al	1209.820	+/-	735.922
P	6282.529	+/-	194.677
Si	28683.771	+/-	768.899
Cl	3352.671	+/-	66.177
S	15522.052	+/-	229.528
Mg	8671.702	+/-	8023.814

mRFA -Ergebnisse

XL3t-69288

Reading No 20
Mode Mining
Time 2017-05-09 12:48
Duration 120.54
Units ppm
Sigma Value 2
Sequence Final
Flags
INV NR **Gm144**
OBJEKT TAFELGEMAELEN
MATERIAL HOLZ METALL FASSUNG
ANALYSESTELLE P19 MANTEL KATHARINA
MESSAUFBAU STATIV ANLIEGEND
FILTER m30lo30hi30li30
User Login Raquet

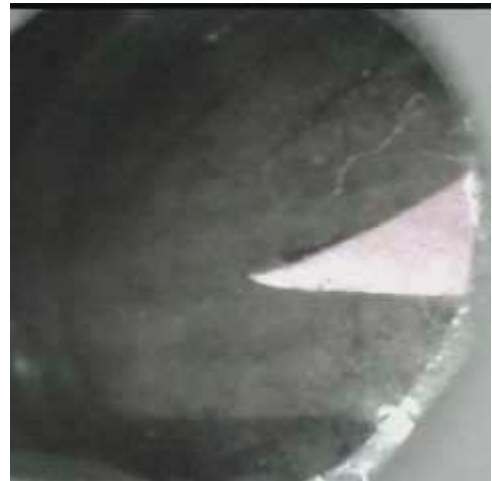


	ppm	+/-	Error
Ce	-339.000	+/-	115.792
La	1.000	+/-	53.282
Ba	1.000	+/-	56.846
Sb	1.000	+/-	19.258
Sn	38.155	+/-	11.210
Cd	1.000	+/-	6.829
Ag	15.338	+/-	5.509
Bal	682471.938	+/-	1667.619
Nb	1.000	+/-	2.604
Zr	1.000	+/-	9.825
Y	1.000	+/-	1.958
Sr	525.750	+/-	9.420
Rb	38.418	+/-	7.732
Th	1.000	+/-	184.360
Bi	1.000	+/-	110.873
Au	7312.511	+/-	98.443
As	29.228	+/-	12.040
Se	1.000	+/-	10.153
Pb	145.575	+/-	9.830
Hg	9.282	+/-	8.153
Zn	175.336	+/-	21.322
Cu	183.338	+/-	19.868
Ni	1.000	+/-	29.940
Co	1.000	+/-	42.899
Fe	5563.571	+/-	137.543
Mn	106.593	+/-	74.085
Cr	187.890	+/-	27.244
V	1.000	+/-	36.406
Ti	342.629	+/-	127.152
Ca	205244.219	+/-	1318.211
K	1559.362	+/-	170.364
Al	5778.734	+/-	1454.661
P	65037.617	+/-	618.372
Si	6649.083	+/-	753.627
Cl	453.473	+/-	42.005
S	18132.045	+/-	200.859
Mg	1.000	+/-	14510.478

mRFA -Ergebnisse

XL3t-69288

Reading No 21
Mode Mining
Time 2017-05-09 12:54
Duration 120.87
Units ppm
Sigma Value 2
Sequence Final
Flags
INV NR **Gm144**
OBJEKT TAFELGEMAELENDE
MATERIAL HOLZ METALL FASSUNG
ANALYSESTELLE P20 SCHWERT KATHARINA
MESSAUFBAU FREIHAND ANLIEGEND
FILTER m30lo30hi30li30
User Login Raquet



	ppm	+/-	Error
Ce	-339.000	+/-	98.458
La	1.000	+/-	45.060
Ba	1.000	+/-	53.298
Sb	1.000	+/-	21.360
Sn	24.592	+/-	13.045
Cd	13.325	+/-	6.708
Ag	1048.940	+/-	21.629
Bal	745183.250	+/-	1385.013
Nb	1.000	+/-	7.895
Zr	1.000	+/-	23.449
Y	1.000	+/-	5.128
Sr	497.270	+/-	9.020
Rb	1.000	+/-	13.669
Th	1.000	+/-	346.084
Bi	1.000	+/-	331.598
Au	1.000	+/-	10.437
As	1864.251	+/-	61.046
Se	1.000	+/-	6.786
Pb	5148.861	+/-	68.589
Hg	1.000	+/-	5.422
Zn	287.323	+/-	17.516
Cu	4661.660	+/-	81.934
Ni	1.000	+/-	47.886
Co	241.684	+/-	50.383
Fe	6131.362	+/-	143.253
Mn	81.462	+/-	67.406
Cr	1.000	+/-	34.827
V	1.000	+/-	29.069
Ti	265.807	+/-	128.723
Ca	149181.219	+/-	1208.972
K	5041.974	+/-	244.120
Al	3065.263	+/-	1036.173
P	661.085	+/-	148.056
Si	45462.801	+/-	977.881
Cl	3206.716	+/-	62.067
S	15709.009	+/-	186.751
Mg	12222.218	+/-	10743.381