

Certificate of Verification

XL3t-69288

Reading No 1
Mode Mining
Time 2015-07-16 11:29
Duration 120.62
Units ppm
Sigma Value 2
Sequence Final
Flags
INV NR Gm 1916
OBJEKT TAFELGEMAELE
MATERIAL HOLZ METALL FASSUNG
ANALYSESTELLE P1 GOLDGRUND
MESSAUFBAU STATIV ANLIEGEND
FILTER m30lo30hi30li30
User Login Raquet



	ppm	+/-	Error
Ce	-339.000	+/-	92.381
La	1.000	+/-	42.632
Ba	1.000	+/-	45.711
Sb	1.000	+/-	18.950
Sn	11.310	+/-	8.554
Cd	1.000	+/-	7.839
Ag	4.114	+/-	4.106
Bal	720311.125	+/-	1338.005
Nb	1.000	+/-	2.080
Zr	1.000	+/-	8.212
Y	1.000	+/-	1.609
Sr	430.389	+/-	7.361
Rb	25.095	+/-	5.527
Th	1.000	+/-	120.382
Bi	1.000	+/-	97.958
Au	3654.709	+/-	57.327
As	51.274	+/-	14.648
Se	1.000	+/-	6.702
Pb	369.753	+/-	12.945
Hg	1.000	+/-	6.829
Zn	80.895	+/-	14.139
Cu	206.149	+/-	17.806
Ni	1.000	+/-	24.837
Co	1.000	+/-	20.736
Fe	557.346	+/-	50.059
Mn	1.000	+/-	60.809
Cr	96.238	+/-	21.522
V	1.000	+/-	17.530
Ti	85.578	+/-	83.071
Ca	204791.016	+/-	1170.935
K	1032.756	+/-	142.469
Al	1972.090	+/-	1139.242
P	50695.398	+/-	513.540
Si	2320.031	+/-	608.452
Cl	295.744	+/-	33.884
S	13008.940	+/-	156.186
Mg	1.000	+/-	15122.666

Supervised By: _____

Certificate of Verification

XL3t-69288

Reading No 2
Mode Mining
Time 2015-07-16 11:33
Duration 121.76
Units ppm
Sigma Value 2
Sequence Final
Flags
INV NR Gm 1916
OBJEKT TAFELGEMAELEN
MATERIAL HOLZ METALL FASSUNG
ANALYSESTELLE P2 BROSCHE
MESSAUFBAU STATIV ANLIEGEND
FILTER m30lo30hi30li30
User Login Raquet



	ppm	+/-	Error
Ce	1017.080	+/-	317.153
La	507.068	+/-	142.266
Ba	626.284	+/-	151.075
Sb	1.000	+/-	50.505
Sn	2231.965	+/-	83.637
Cd	1.000	+/-	16.500
Ag	1454.167	+/-	55.263
Bal	750223.438	+/-	3570.954
Nb	169.211	+/-	70.234
Zr	1.000	+/-	207.389
Y	1.000	+/-	56.722
Sr	146.822	+/-	18.348
Rb	1.000	+/-	114.578
Th	1.000	+/-	2692.078
Bi	1.000	+/-	2066.598
Au	366.953	+/-	95.690
As	16091.881	+/-	498.204
Se	42.114	+/-	30.081
Pb	104531.898	+/-	2219.379
Hg	1493.265	+/-	69.750
Zn	247.858	+/-	36.155
Cu	13212.141	+/-	293.812
Ni	148.356	+/-	58.968
Co	95.047	+/-	56.011
Fe	1956.120	+/-	138.389
Mn	242.567	+/-	115.809
Cr	1.000	+/-	50.550
V	1.000	+/-	35.462
Ti	1.000	+/-	178.112
Ca	10100.620	+/-	321.760
K	3075.223	+/-	300.037
Al	3566.355	+/-	1008.837
P	9141.300	+/-	285.915
Si	17393.039	+/-	667.835
Cl	5373.596	+/-	133.956
S	40024.859	+/-	830.778
Mg	16180.715	+/-	11141.358

Supervised By: _____

Certificate of Verification

XL3t-69288

Reading No 3
Mode Mining
Time 2015-07-16 11:38
Duration 120.90
Units ppm
Sigma Value 2
Sequence Final
Flags
INV NR Gm 1916
OBJEKT TAFELGEMAELEN
MATERIAL HOLZ METALL FASSUNG
ANALYSESTELLE P3 BROKATMUSTER
MESSAUFBAU STATIV ANLIEGEND
FILTER m30lo30hi30li30
User Login Raquet



	ppm	+/-	Error
Ce	-339.000	+/-	104.035
La	1.000	+/-	51.087
Ba	1.000	+/-	73.668
Sb	1.000	+/-	25.778
Sn	27.530	+/-	9.812
Cd	1.000	+/-	8.992
Ag	5.940	+/-	4.605
Bal	781178.438	+/-	1152.674
Nb	1.000	+/-	3.907
Zr	1.000	+/-	15.790
Y	1.000	+/-	3.449
Sr	484.183	+/-	8.447
Rb	16.743	+/-	8.066
Th	1.000	+/-	232.799
Bi	1.000	+/-	212.274
Au	3138.402	+/-	56.554
As	808.374	+/-	39.507
Se	1.000	+/-	7.799
Pb	2436.383	+/-	38.094
Hg	1.000	+/-	5.885
Zn	117.215	+/-	15.081
Cu	471.999	+/-	24.676
Ni	1.000	+/-	26.674
Co	1.000	+/-	23.093
Fe	815.736	+/-	59.392
Mn	114.178	+/-	68.753
Cr	57.789	+/-	22.318
V	1.000	+/-	19.392
Ti	167.996	+/-	100.683
Ca	163561.094	+/-	1137.522
K	3304.071	+/-	169.103
Al	1525.167	+/-	930.657
P	15677.413	+/-	289.059
Si	9821.096	+/-	568.977
Cl	1871.911	+/-	48.561
S	14398.317	+/-	165.458
Mg	1.000	+/-	14281.642

Supervised By: _____

Certificate of Verification

XL3t-69288

Reading No 4
Mode Mining
Time 2015-07-16 11:43
Duration 120.77
Units ppm
Sigma Value 2
Sequence Final
Flags
INV NR Gm 1916
OBJEKT TAFELGEMAELEN
MATERIAL HOLZ METALL FASSUNG
ANALYSESTELLE P4 HELM LINKS
MESSAUFBAU STATIV ANLIEGEND
FILTER m30lo30hi30li30
User Login Raquet



	ppm	+/-	Error
Ce	-339.000	+/-	177.122
La	1.000	+/-	101.250
Ba	1.000	+/-	117.515
Sb	1.000	+/-	27.810
Sn	805.765	+/-	32.881
Cd	1.000	+/-	9.816
Ag	566.276	+/-	22.237
Bal	836998.625	+/-	1522.183
Nb	69.341	+/-	31.236
Zr	1.000	+/-	101.011
Y	1.000	+/-	26.049
Sr	297.213	+/-	12.134
Rb	1.000	+/-	51.169
Th	1.000	+/-	1381.692
Bi	1.000	+/-	1227.701
Au	1.000	+/-	32.555
As	10051.504	+/-	277.159
Se	25.228	+/-	18.020
Pb	46454.293	+/-	817.914
Hg	1.000	+/-	18.451
Zn	94.262	+/-	16.472
Cu	5368.230	+/-	133.446
Ni	1.000	+/-	65.396
Co	1.000	+/-	61.264
Fe	7117.065	+/-	220.471
Mn	197.087	+/-	90.372
Cr	41.252	+/-	26.077
V	1.000	+/-	35.345
Ti	226.606	+/-	130.479
Ca	9804.692	+/-	279.021
K	4564.868	+/-	278.672
Al	6505.310	+/-	833.722
P	1440.157	+/-	132.075
Si	44043.895	+/-	1082.584
Cl	5107.119	+/-	112.247
S	20221.229	+/-	395.329
Mg	1.000	+/-	8414.141

Supervised By: _____

Certificate of Verification

XL3t-69288

Reading No 5
Mode Mining
Time 2015-07-16 11:49
Duration 120.14
Units ppm
Sigma Value 2
Sequence Final
Flags
INV NR Gm 1916
OBJEKT TAFELGEMAELEN
MATERIAL HOLZ METALL FASSUNG
ANALYSESTELLE P5 HELM RECHTS
MESSAUFBAU STATIV ANLIEGEND
FILTER m30lo30hi30li30
User Login Raquet



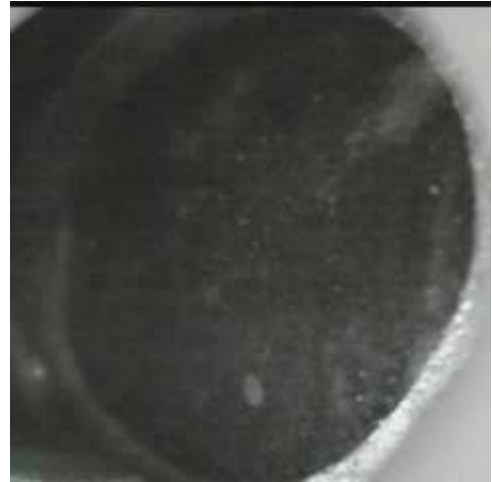
	ppm	+/-	Error
Ce	-339.000	+/-	139.579
La	1.000	+/-	83.130
Ba	149.960	+/-	69.952
Sb	1.000	+/-	26.189
Sn	535.335	+/-	23.612
Cd	27.046	+/-	9.356
Ag	440.666	+/-	16.948
Bal	836978.438	+/-	1254.241
Nb	38.668	+/-	19.672
Zr	1.000	+/-	66.713
Y	1.000	+/-	16.861
Sr	358.256	+/-	10.825
Rb	1.000	+/-	34.062
Th	1.000	+/-	948.210
Bi	1.000	+/-	890.731
Au	1.000	+/-	23.635
As	6703.167	+/-	186.823
Se	30.972	+/-	22.123
Pb	29122.639	+/-	453.421
Hg	1.000	+/-	13.836
Zn	85.979	+/-	13.978
Cu	3733.398	+/-	93.942
Ni	1.000	+/-	35.404
Co	1.000	+/-	51.005
Fe	6254.105	+/-	186.523
Mn	257.841	+/-	97.987
Cr	55.397	+/-	30.321
V	1.000	+/-	72.188
Ti	929.501	+/-	373.244
Ca	57269.172	+/-	860.520
K	3006.813	+/-	232.196
Al	4524.079	+/-	876.662
P	1096.076	+/-	139.093
Si	24043.844	+/-	744.523
Cl	6103.538	+/-	115.023
S	18255.174	+/-	305.445
Mg	1.000	+/-	8173.299

Supervised By: _____

Certificate of Verification

XL3t-69288

Reading No 6
Mode Mining
Time 2015-07-16 11:54
Duration 120.68
Units ppm
Sigma Value 2
Sequence Final
Flags
INV NR Gm 1916
OBJEKT TAFELGEMAELEN
MATERIAL HOLZ METALL FASSUNG
ANALYSESTELLE P6 MANTEL
MESSAUFBAU STATIV ANLIEGEND
FILTER m30lo30hi30li30
User Login Raquet



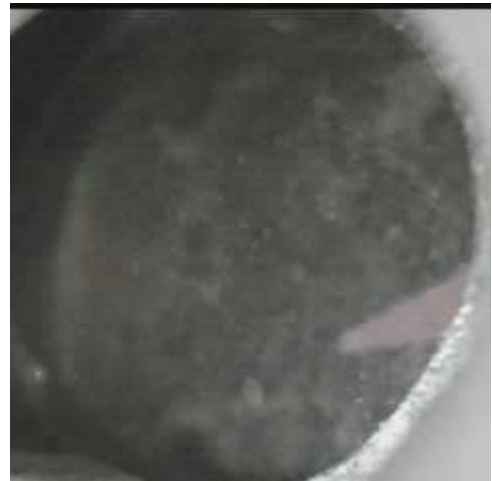
	ppm	+/-	Error
Ce	-339.000	+/-	154.574
La	1.000	+/-	97.184
Ba	90.658	+/-	76.725
Sb	33.801	+/-	25.960
Sn	823.638	+/-	28.760
Cd	1.000	+/-	9.684
Ag	40.865	+/-	7.737
Bal	837252.188	+/-	1398.365
Nb	1.000	+/-	26.153
Zr	1.000	+/-	71.466
Y	1.000	+/-	16.076
Sr	220.527	+/-	9.385
Rb	1.000	+/-	29.118
Th	1.000	+/-	922.414
Bi	1.000	+/-	902.491
Au	1.000	+/-	23.492
As	1689.471	+/-	150.881
Se	1.000	+/-	17.144
Pb	19172.633	+/-	330.708
Hg	1.000	+/-	13.365
Zn	1.000	+/-	41.920
Cu	91113.930	+/-	1193.859
Ni	55.870	+/-	38.388
Co	1.000	+/-	38.970
Fe	3344.996	+/-	114.116
Mn	1.000	+/-	79.611
Cr	1.000	+/-	31.897
V	1.000	+/-	46.457
Ti	1.000	+/-	315.836
Ca	7972.708	+/-	197.363
K	6294.488	+/-	246.797
Al	6291.684	+/-	666.624
P	1512.357	+/-	85.173
Si	10257.681	+/-	362.297
Cl	5746.674	+/-	89.366
S	8085.778	+/-	128.181
Mg	1.000	+/-	5648.442

Supervised By: _____

Certificate of Verification

XL3t-69288

Reading No 7
Mode Mining
Time 2015-07-16 12:03
Duration 121.95
Units ppm
Sigma Value 2
Sequence Final
Flags
INV NR Gm 1916
OBJEKT TAFELGEMAELEN
MATERIAL HOLZ METALL FASSUNG
ANALYSESTELLE P7 GEWANDMUSTER
MESSAUFBAU STATIV ANLIEGEND
FILTER m30lo30hi30li30
User Login Raquet



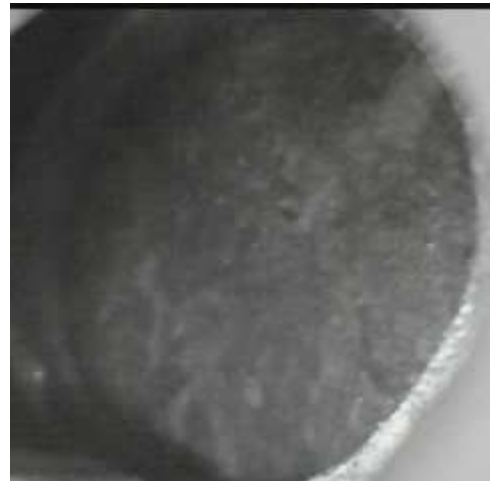
	ppm	+/-	Error
Ce	-339.000	+/-	112.544
La	1.000	+/-	51.117
Ba	1.000	+/-	54.623
Sb	1.000	+/-	18.572
Sn	38.433	+/-	10.450
Cd	8.090	+/-	7.076
Ag	1.000	+/-	5.920
Bal	861528.688	+/-	1050.472
Nb	47.353	+/-	21.007
Zr	1.000	+/-	69.984
Y	1.000	+/-	17.534
Sr	86.667	+/-	6.473
Rb	1.000	+/-	34.350
Th	1.000	+/-	979.364
Bi	1.000	+/-	913.904
Au	1.000	+/-	28.523
As	7405.393	+/-	193.333
Se	1.000	+/-	19.088
Pb	32945.957	+/-	503.021
Hg	230.759	+/-	23.250
Zn	143.214	+/-	15.151
Cu	732.358	+/-	35.465
Ni	1.000	+/-	32.055
Co	1.000	+/-	30.106
Fe	1095.559	+/-	79.044
Mn	1.000	+/-	100.263
Cr	1.000	+/-	30.688
V	1.000	+/-	22.121
Ti	1.000	+/-	122.217
Ca	23181.000	+/-	413.200
K	3757.682	+/-	177.271
Al	4832.981	+/-	628.501
P	4327.604	+/-	157.833
Si	31775.467	+/-	769.610
Cl	2240.003	+/-	51.590
S	25622.760	+/-	434.655
Mg	1.000	+/-	5398.376

Supervised By: _____

Certificate of Verification

XL3t-69288

Reading No 8
Mode Mining
Time 2015-07-16 12:08
Duration 121.85
Units ppm
Sigma Value 2
Sequence Final
Flags
INV NR Gm 1916
OBJEKT TAFELGEMAELEN
MATERIAL HOLZ METALL FASSUNG
ANALYSESTELLE P8 GEWANDMUSTER
MESSAUFBAU STATIV ANLIEGEND
FILTER m30lo30hi30li30
User Login Raquet



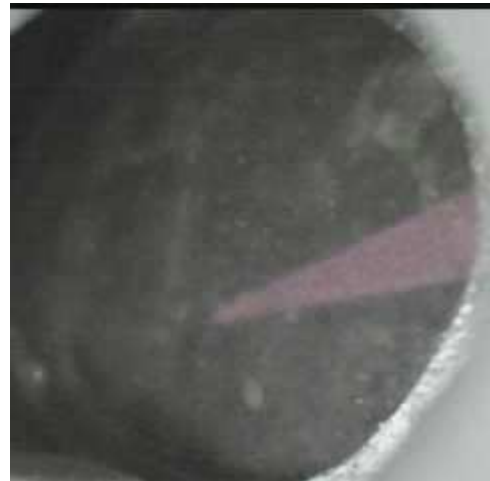
	ppm	+/-	Error
Ce	-339.000	+/-	102.747
La	1.000	+/-	46.795
Ba	1.000	+/-	49.985
Sb	1.000	+/-	20.752
Sn	52.645	+/-	9.943
Cd	9.214	+/-	6.554
Ag	1.000	+/-	4.593
Bal	842827.000	+/-	1154.701
Nb	39.531	+/-	19.439
Zr	1.000	+/-	65.464
Y	1.000	+/-	16.223
Sr	100.027	+/-	6.154
Rb	1.000	+/-	31.728
Th	1.000	+/-	921.497
Bi	1.000	+/-	838.364
Au	1.000	+/-	24.619
As	6808.718	+/-	180.613
Se	16.958	+/-	12.828
Pb	29570.611	+/-	447.650
Hg	1.000	+/-	17.474
Zn	123.943	+/-	13.391
Cu	753.371	+/-	35.593
Ni	1.000	+/-	31.232
Co	1.000	+/-	28.708
Fe	1040.047	+/-	76.867
Mn	1.000	+/-	103.454
Cr	1.000	+/-	20.118
V	1.000	+/-	22.662
Ti	1.000	+/-	148.726
Ca	24467.697	+/-	422.926
K	3927.264	+/-	172.348
Al	7571.165	+/-	726.709
P	5608.762	+/-	177.433
Si	39978.031	+/-	888.898
Cl	2482.702	+/-	54.833
S	27674.455	+/-	459.317
Mg	6947.883	+/-	5946.914

Supervised By: _____

Certificate of Verification

XL3t-69288

Reading No 9
Mode Mining
Time 2015-07-16 12:13
Duration 121.42
Units ppm
Sigma Value 2
Sequence Final
Flags
INV NR Gm 1916
OBJEKT TAFELGEMAELEN
MATERIAL HOLZ METALL FASSUNG
ANALYSESTELLE P9 BORTE MANTEL
MESSAUFBAU STATIV ANLIEGEND
FILTER m30lo30hi30li30
User Login Raquet



	ppm	+/-	Error
Ce	-339.000	+/-	63.202
La	1.000	+/-	29.012
Ba	1.000	+/-	31.328
Sb	1.000	+/-	12.133
Sn	32.416	+/-	6.456
Cd	11.181	+/-	4.497
Ag	7.980	+/-	3.044
Bal	851514.750	+/-	718.236
Nb	8.687	+/-	4.998
Zr	1.000	+/-	19.293
Y	1.000	+/-	3.955
Sr	128.715	+/-	3.607
Rb	1.000	+/-	8.768
Th	1.000	+/-	265.229
Bi	1.000	+/-	267.599
Au	1.000	+/-	7.167
As	1028.501	+/-	46.578
Se	1.000	+/-	5.128
Pb	5004.222	+/-	56.476
Hg	1.000	+/-	3.501
Zn	45.559	+/-	6.869
Cu	49.313	+/-	11.425
Ni	1.000	+/-	19.412
Co	1.000	+/-	16.533
Fe	521.878	+/-	43.868
Mn	1.000	+/-	46.171
Cr	15.128	+/-	13.885
V	1.000	+/-	16.212
Ti	111.432	+/-	76.656
Ca	103135.742	+/-	804.366
K	2447.580	+/-	122.775
Al	2160.313	+/-	630.882
P	1256.503	+/-	119.824
Si	16413.074	+/-	522.649
Cl	1372.808	+/-	34.558
S	14734.188	+/-	159.443
Mg	1.000	+/-	9010.537

Supervised By: _____

Certificate of Verification

XL3t-69288

Reading No 10
Mode Mining
Time 2015-07-16 12:19
Duration 120.78
Units ppm
Sigma Value 2
Sequence Final
Flags
INV NR Gm 1916
OBJEKT TAFELGEMAELEN
MATERIAL HOLZ METALL FASSUNG
ANALYSESTELLE P10 MANTEL BORTE
MESSAUFBAU STATIV ANLIEGEND
FILTER m30lo30hi30li30
User Login Raquet



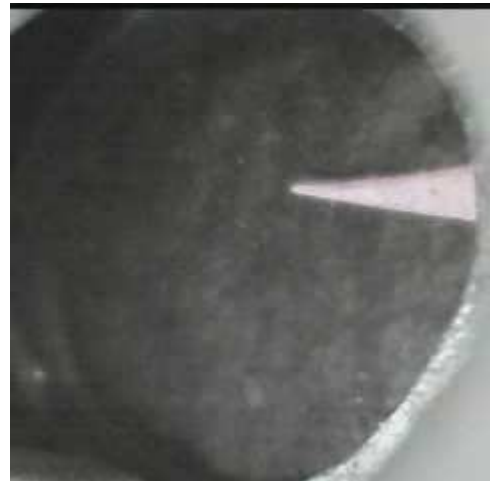
	ppm	+/-	Error
Ce	-339.000	+/-	86.979
La	1.000	+/-	39.830
Ba	1.000	+/-	42.627
Sb	1.000	+/-	14.223
Sn	202.337	+/-	11.557
Cd	13.667	+/-	5.872
Ag	94.909	+/-	6.362
Bal	842919.563	+/-	947.515
Nb	23.196	+/-	11.560
Zr	1.000	+/-	40.650
Y	1.000	+/-	9.688
Sr	167.340	+/-	5.623
Rb	1.000	+/-	21.038
Th	1.000	+/-	592.516
Bi	1.000	+/-	541.203
Au	49.444	+/-	20.372
As	3290.334	+/-	107.158
Se	1.000	+/-	9.590
Pb	16670.906	+/-	215.513
Hg	1.000	+/-	8.209
Zn	65.012	+/-	9.393
Cu	327.631	+/-	22.181
Ni	1.000	+/-	26.619
Co	1.000	+/-	23.657
Fe	808.504	+/-	61.874
Mn	1.000	+/-	60.444
Cr	22.339	+/-	16.550
V	1.000	+/-	19.919
Ti	1.000	+/-	130.295
Ca	80116.117	+/-	934.627
K	2703.082	+/-	141.936
Al	3230.256	+/-	722.191
P	1964.911	+/-	152.108
Si	17836.912	+/-	580.464
Cl	1402.270	+/-	38.918
S	28091.213	+/-	361.317
Mg	1.000	+/-	6239.908

Supervised By: _____

Certificate of Verification

XL3t-69288

Reading No 11
Mode Mining
Time 2015-07-16 12:22
Duration 120.82
Units ppm
Sigma Value 2
Sequence Final
Flags
INV NR Gm 1916
OBJEKT TAFELGEMAELEN
MATERIAL HOLZ METALL FASSUNG
ANALYSESTELLE P11 STOLA
MESSAUFBAU STATIV ANLIEGEND
FILTER m30lo30hi30li30
User Login Raquet



	ppm	+/-	Error
Ce	1039.099	+/-	381.194
La	663.968	+/-	173.339
Ba	556.043	+/-	180.637
Sb	1.000	+/-	53.133
Sn	4256.914	+/-	147.835
Cd	1.000	+/-	19.202
Ag	1.000	+/-	20.462
Bal	671835.313	+/-	5360.087
Nb	1.000	+/-	121.110
Zr	1.000	+/-	251.120
Y	1.000	+/-	70.643
Sr	1.000	+/-	30.774
Rb	1.000	+/-	155.329
Th	1.000	+/-	4767.593
Bi	1.000	+/-	2523.395
Au	1.000	+/-	162.043
As	21361.699	+/-	703.576
Se	49.010	+/-	35.007
Pb	113320.180	+/-	3013.519
Hg	17354.457	+/-	443.617
Zn	1027.649	+/-	74.342
Cu	753.746	+/-	60.121
Ni	272.263	+/-	74.337
Co	75.601	+/-	66.820
Fe	2295.735	+/-	176.052
Mn	461.702	+/-	149.243
Cr	1.000	+/-	45.372
V	1.000	+/-	59.063
Ti	1.000	+/-	327.441
Ca	59437.121	+/-	1445.574
K	7751.455	+/-	410.265
Al	10097.744	+/-	1431.272
P	5216.210	+/-	255.802
Si	36768.578	+/-	1232.987
Cl	2994.836	+/-	103.382
S	42070.680	+/-	1121.594
Mg	1.000	+/-	11879.072

Supervised By: _____

Certificate of Verification

XL3t-69288

Reading No 12
Mode Mining
Time 2015-07-16 12:27
Duration 121.09
Units ppm
Sigma Value 2
Sequence Final
Flags
INV NR Gm 1916
OBJEKT TAFELGEMAELENDE
MATERIAL HOLZ METALL FASSUNG
ANALYSESTELLE P12 MANTEL
MESSAUFBAU STATIV ANLIEGEND
FILTER m30lo30hi30li30
User Login Raquet



	ppm	+/-	Error
Ce	-339.000	+/-	120.490
La	1.000	+/-	55.079
Ba	1.000	+/-	58.798
Sb	1.000	+/-	19.028
Sn	1434.825	+/-	34.687
Cd	12.394	+/-	7.925
Ag	607.430	+/-	18.334
Bal	835465.250	+/-	1288.772
Nb	39.118	+/-	20.471
Zr	1.000	+/-	69.032
Y	1.000	+/-	17.351
Sr	70.671	+/-	7.924
Rb	1.000	+/-	35.098
Th	1.000	+/-	980.308
Bi	1.000	+/-	841.010
Au	124.189	+/-	48.579
As	5798.091	+/-	179.795
Se	1.000	+/-	17.761
Pb	29816.971	+/-	464.540
Hg	2462.458	+/-	53.014
Zn	126.887	+/-	21.038
Cu	329.742	+/-	27.372
Ni	1.000	+/-	36.440
Co	1.000	+/-	33.073
Fe	1183.113	+/-	86.592
Mn	107.666	+/-	77.937
Cr	1.000	+/-	32.665
V	1.000	+/-	27.199
Ti	1.000	+/-	173.013
Ca	70124.344	+/-	1023.130
K	3719.546	+/-	186.722
Al	3048.512	+/-	733.008
P	1720.453	+/-	143.310
Si	19529.322	+/-	630.428
Cl	1412.828	+/-	41.825
S	22866.242	+/-	365.899
Mg	1.000	+/-	6825.908

Supervised By: _____

Certificate of Verification

XL3t-69288

Reading No 13
Mode Mining
Time 2015-07-16 12:31
Duration 122.26
Units ppm
Sigma Value 2
Sequence Final
Flags
INV NR Gm 1916
OBJEKT TAFELGEMAELEN
MATERIAL HOLZ METALL FASSUNG
ANALYSESTELLE P13 HELM
MESSAUFBAU STATIV ANLIEGEND
FILTER m30lo30hi30li30
User Login Raquet



	ppm	+/-	Error
Ce	1243.349	+/-	368.893
La	782.212	+/-	168.284
Ba	670.389	+/-	174.700
Sb	1.000	+/-	51.264
Sn	14720.707	+/-	425.622
Cd	28.868	+/-	24.318
Ag	1791.723	+/-	72.909
Bal	635061.938	+/-	6007.591
Nb	300.014	+/-	102.124
Zr	1.000	+/-	286.331
Y	1.000	+/-	79.693
Sr	32.649	+/-	18.473
Rb	1.000	+/-	164.453
Th	1.000	+/-	4045.085
Bi	1.000	+/-	2850.972
Au	1.000	+/-	79.812
As	13086.332	+/-	582.985
Se	1.000	+/-	27.636
Pb	150846.188	+/-	3606.469
Hg	1.000	+/-	45.742
Zn	190.301	+/-	26.818
Cu	464.004	+/-	50.942
Ni	211.461	+/-	76.660
Co	1.000	+/-	70.284
Fe	3004.294	+/-	196.617
Mn	431.728	+/-	148.398
Cr	42.353	+/-	39.490
V	1.000	+/-	50.538
Ti	1.000	+/-	328.411
Ca	70908.383	+/-	1539.270
K	9006.121	+/-	409.154
Al	8642.120	+/-	1403.234
P	4795.965	+/-	234.744
Si	39500.172	+/-	1179.795
Cl	3072.941	+/-	95.215
S	40825.750	+/-	932.324
Mg	1.000	+/-	12574.036

Supervised By: _____