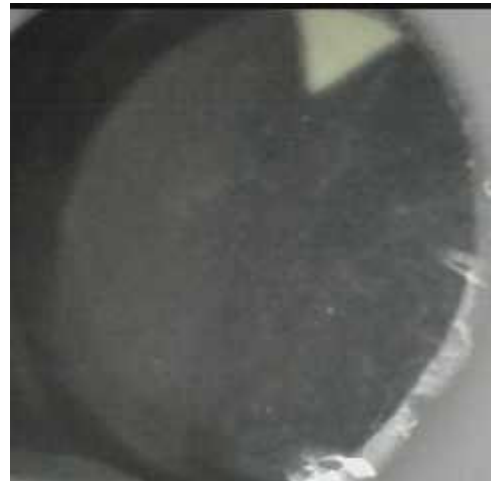


mRFA -Ergebnisse

XL3t-69288

Reading No 1
Mode Mining
Time 2021-12-21 11:53
Duration 121.54
Units ppm
Sigma Value 2
Sequence Final
Flags
INV NR Pl.O.147
OBJEKT TAFELGEMAELEN
MATERIAL HOLZ METALL FASSUNG
ANALYSESTELLE P1 RS KLEID DORO
MESSAUFBAU STATIV
FILTER m30lo30hi3li30
Schadstoffmessung
User Login Raquet



Ele	ppm	+/-	±2σ
Mg	4642.606	+/-	4196.397
Al	2657.327	+/-	435.942
Bal	873429.313	+/-	712.792
Si	21717.033	+/-	434.128
P	274.717	+/-	53.061
S	2275.385	+/-	38.633
Cl	676.033	+/-	19.895
K	1636.693	+/-	119.268
Ca	37949.496	+/-	326.061
Ti	222.695	+/-	76.611
V	1.000	+/-	13.725
Cr	1.000	+/-	14.643
Mn	1.000	+/-	39.986
Fe	3285.202	+/-	83.691
Co	1.000	+/-	27.953
Ni	1.000	+/-	21.092
Cu	49653.512	+/-	346.427
Zn	430.169	+/-	27.884
As	609.743	+/-	20.665
Se	1.000	+/-	2.095
Rb	1.000	+/-	4.518
Sr	10.736	+/-	1.652
Y	1.000	+/-	1.512
Zr	7.315	+/-	7.012
Nb	7.154	+/-	2.645
Ag	9.879	+/-	3.558
Cd	12.277	+/-	5.162
Sn	16.252	+/-	7.042
Sb	146.737	+/-	15.312
Ba	1.000	+/-	35.569
La	1.000	+/-	32.759
Ce	-339.000	+/-	71.381
Au	1.000	+/-	6.544
Hg	8.537	+/-	4.497
Pb	321.130	+/-	12.452
Bi	1.000	+/-	90.759
Th	1.000	+/-	97.637

mRFA -Ergebnisse

XL3t-69288

Reading No 2
Mode Mining
Time 2021-12-21 11:59
Duration 121.23
Units ppm
Sigma Value 2
Sequence Final
Flags
INV NR Pl.O.147
OBJEKT TAFELGEMAEDELDE
MATERIAL HOLZ METALL FASSUNG
ANALYSESTELLE P2 RS MANTEL DORO
MESSAUFBAU STATIV
FILTER m30lo30hi3li30
Schadstoffmessung
User Login Raquet



Ele	ppm	+/-	$\pm 2\sigma$
Mg	1.000	+/-	6872.659
Al	3072.480	+/-	656.457
Bal	860214.250	+/-	885.129
Si	15912.985	+/-	552.043
P	22156.541	+/-	355.158
S	46564.895	+/-	552.288
Cl	1824.248	+/-	41.605
K	890.027	+/-	108.079
Ca	30532.346	+/-	410.826
Ti	1.000	+/-	79.795
V	18.905	+/-	14.532
Cr	1.000	+/-	16.939
Mn	1.000	+/-	57.589
Fe	729.099	+/-	61.935
Co	1.000	+/-	25.804
Ni	1.000	+/-	27.491
Cu	799.815	+/-	32.839
Zn	438.588	+/-	28.947
As	2703.871	+/-	80.046
Se	17.978	+/-	12.841
Rb	1.000	+/-	13.181
Sr	1.000	+/-	5.339
Y	1.000	+/-	7.065
Zr	1.000	+/-	33.709
Nb	10.768	+/-	8.246
Ag	6.150	+/-	3.431
Cd	10.505	+/-	5.162
Sn	17.064	+/-	7.135
Sb	13.965	+/-	13.372
Ba	1.000	+/-	36.658
La	1.000	+/-	34.300
Ce	-339.000	+/-	74.553
Au	1.000	+/-	44.742
Hg	6099.261	+/-	80.702
Pb	7966.323	+/-	109.136
Bi	1.000	+/-	448.223
Th	1.000	+/-	427.453

mRFA -Ergebnisse

XL3t-69288

Reading No 3
Mode Mining
Time 2021-12-21 12:03
Duration 121.15
Units ppm
Sigma Value 2
Sequence Final
Flags
INV NR Pl.O.147
OBJEKT TAFELGEMAEDELDE
MATERIAL HOLZ METALL FASSUNG
ANALYSESTELLE P3 RS MANTEL KIND
MESSAUFBAU STATIV
FILTER m30lo30hi3li30
Schadstoffmessung
User Login Raquet



Ele	ppm	+/-	$\pm 2\sigma$
Mg	44069.129	+/-	9098.440
Al	2534.419	+/-	817.339
Bal	787382.000	+/-	937.700
Si	12468.847	+/-	487.497
P	1.000	+/-	75.854
S	3070.851	+/-	61.660
Cl	638.725	+/-	28.085
K	2049.286	+/-	132.323
Ca	145819.141	+/-	734.059
Ti	156.277	+/-	75.487
V	25.848	+/-	13.876
Cr	1.000	+/-	19.647
Mn	1.000	+/-	36.552
Fe	1361.286	+/-	53.757
Co	1.000	+/-	18.538
Ni	1.000	+/-	16.680
Cu	236.213	+/-	14.575
Zn	6.582	+/-	5.145
As	22.010	+/-	5.991
Se	1.000	+/-	1.092
Rb	5.917	+/-	1.930
Sr	15.274	+/-	1.342
Y	5.525	+/-	1.382
Zr	7.820	+/-	4.168
Nb	9.426	+/-	1.857
Ag	6.836	+/-	2.818
Cd	15.867	+/-	4.317
Sn	10.572	+/-	5.593
Sb	1.000	+/-	10.590
Ba	1.000	+/-	28.195
La	1.000	+/-	26.159
Ce	-339.000	+/-	56.700
Au	1.000	+/-	2.653
Hg	11.323	+/-	1.948
Pb	70.801	+/-	4.919
Bi	1.000	+/-	43.424
Th	1.000	+/-	55.761

mRFA -Ergebnisse

XL3t-69288

Reading No 4
Mode Mining
Time 2021-12-21 12:06
Duration 120.09
Units ppm
Sigma Value 2
Sequence Final
Flags
INV NR Pl.O.147
OBJEKT TAFELGEMAEDELDE
MATERIAL HOLZ METALL FASSUNG
ANALYSESTELLE P4 RS MANTELFUTTER BARBARA
MESSAUFBAU STATIV
FILTER m30lo30hi3li30
Schadstoffmessung
User Login Raquet



Ele	ppm	+/-	$\pm 2\sigma$
Mg	25459.352	+/-	7830.335
Al	4263.208	+/-	807.988
Bal	800067.500	+/-	903.328
Si	28582.828	+/-	672.980
P	1.000	+/-	84.581
S	4600.942	+/-	73.007
Cl	702.534	+/-	27.953
K	2589.642	+/-	140.796
Ca	119030.094	+/-	642.902
Ti	238.236	+/-	78.652
V	1.000	+/-	18.443
Cr	1.000	+/-	14.776
Mn	1.000	+/-	37.217
Fe	1930.538	+/-	61.969
Co	1.000	+/-	20.310
Ni	1.000	+/-	17.284
Cu	12124.827	+/-	104.589
Zn	48.947	+/-	11.959
As	143.879	+/-	8.328
Se	1.000	+/-	1.197
Rb	4.492	+/-	2.025
Sr	18.473	+/-	1.479
Y	4.006	+/-	1.414
Zr	9.242	+/-	4.445
Nb	10.267	+/-	1.968
Ag	6.152	+/-	2.814
Cd	14.564	+/-	4.323
Sn	12.866	+/-	5.691
Sb	63.015	+/-	11.480
Ba	1.000	+/-	28.456
La	1.000	+/-	26.469
Ce	-339.000	+/-	57.612
Au	1.000	+/-	3.510
Hg	4.179	+/-	2.158
Pb	70.228	+/-	5.135
Bi	1.000	+/-	46.133
Th	1.000	+/-	60.787

mRFA -Ergebnisse

XL3t-69288

Reading No 5
Mode Mining
Time 2021-12-21 12:11
Duration 120.60
Units ppm
Sigma Value 2
Sequence Final
Flags
INV NR Pl.O.147
OBJEKT TAFELGEMAELEN
MATERIAL HOLZ METALL FASSUNG
ANALYSESTELLE P5 RS HAARE BARBARA
MESSAUFBAU STATIV
FILTER m30lo30hi3li30
Schadstoffmessung
User Login Raquet



Ele	ppm	+/-	±2σ
Mg	12994.959	+/-	6486.559
Al	7822.570	+/-	773.971
Bal	851379.750	+/-	919.938
Si	31251.988	+/-	723.137
P	1889.721	+/-	132.807
S	24096.324	+/-	317.019
Cl	1737.091	+/-	40.268
K	1585.769	+/-	161.623
Ca	21802.787	+/-	348.205
Ti	164.043	+/-	95.646
V	29.433	+/-	17.455
Cr	55.657	+/-	19.001
Mn	1.000	+/-	59.157
Fe	25395.639	+/-	388.549
Co	1.000	+/-	76.961
Ni	1.000	+/-	25.763
Cu	535.150	+/-	26.547
Zn	44.787	+/-	8.109
As	3581.307	+/-	103.553
Se	1.000	+/-	12.066
Rb	1.000	+/-	18.494
Sr	14.379	+/-	2.638
Y	1.000	+/-	8.934
Zr	1.000	+/-	38.471
Nb	27.629	+/-	10.829
Ag	9.667	+/-	3.535
Cd	28.706	+/-	5.698
Sn	830.361	+/-	18.860
Sb	1.000	+/-	12.859
Ba	1.000	+/-	36.651
La	1.000	+/-	34.181
Ce	-339.000	+/-	74.635
Au	1.000	+/-	13.820
Hg	1.000	+/-	7.781
Pb	14722.230	+/-	192.017
Bi	1.000	+/-	533.765
Th	1.000	+/-	555.463

mRFA -Ergebnisse

XL3t-69288

Reading No 6
Mode Mining
Time 2021-12-21 12:14
Duration 120.87
Units ppm
Sigma Value 2
Sequence Final
Flags 3mm
INV NR Pl.O.147
OBJEKT TAFELGEMAELEN
MATERIAL HOLZ METALL FASSUNG
ANALYSESTELLE P6 RS HAARE BARBARA
MESSAUFBAU STATIV
FILTER m30lo30hi3li30
Schadstoffmessung
User Login Raquet



Ele	ppm	+/-	$\pm 2\sigma$
Mg	9396.282	+/-	7195.393
Al	4929.226	+/-	768.788
Bal	869169.625	+/-	1248.399
Si	23505.924	+/-	807.407
P	2614.401	+/-	173.965
S	29540.408	+/-	566.548
Cl	2920.886	+/-	84.923
K	979.461	+/-	186.544
Ca	9095.662	+/-	299.862
Ti	1.000	+/-	122.607
V	1.000	+/-	28.062
Cr	29.104	+/-	23.624
Mn	1.000	+/-	81.559
Fe	18569.801	+/-	459.838
Co	1.000	+/-	108.187
Ni	1.000	+/-	34.864
Cu	498.189	+/-	38.043
Zn	68.141	+/-	12.521
As	4692.788	+/-	171.213
Se	15.604	+/-	14.922
Rb	1.000	+/-	39.902
Sr	15.133	+/-	4.494
Y	1.000	+/-	16.537
Zr	1.000	+/-	68.026
Nb	33.225	+/-	19.621
Ag	1.000	+/-	11.603
Cd	21.917	+/-	13.870
Sn	1678.801	+/-	68.976
Sb	1.000	+/-	53.552
Ba	1.000	+/-	92.802
La	1.000	+/-	89.158
Ce	1.000	+/-	108.401
Au	1.000	+/-	24.500
Hg	1.000	+/-	15.254
Pb	22225.453	+/-	412.833
Bi	1.000	+/-	843.123
Th	1.000	+/-	930.469

mRFA -Ergebnisse

XL3t-69288

Reading No 7
Mode Mining
Time 2021-12-21 12:19
Duration 122.10
Units ppm
Sigma Value 2
Sequence Final
Flags 3mm
INV NR Pl.O.147
OBJEKT TAFELGEMAELEN
MATERIAL HOLZ METALL FASSUNG
ANALYSESTELLE P7 RS KLEID BARBARA
MESSAUFBAU STATIV
FILTER m30lo30hi3li30
Schadstoffmessung
User Login Raquet



Ele	ppm	+/-	$\pm 2\sigma$
Mg	1.000	+/-	7609.563
Al	4873.172	+/-	708.615
Bal	847513.938	+/-	1365.224
Si	36630.043	+/-	846.369
P	1.000	+/-	125.570
S	4368.460	+/-	80.558
Cl	805.928	+/-	36.774
K	1678.448	+/-	153.708
Ca	46517.691	+/-	546.761
Ti	184.863	+/-	97.257
V	1.000	+/-	19.439
Cr	1.000	+/-	20.403
Mn	1.000	+/-	65.156
Fe	2883.990	+/-	131.636
Co	1.000	+/-	46.514
Ni	1.000	+/-	29.759
Cu	52420.605	+/-	582.841
Zn	782.270	+/-	51.828
As	1043.800	+/-	34.348
Se	1.000	+/-	2.723
Rb	4.348	+/-	3.878
Sr	12.601	+/-	2.759
Y	1.000	+/-	2.455
Zr	1.000	+/-	8.712
Nb	1.000	+/-	5.152
Ag	8.978	+/-	7.625
Cd	14.586	+/-	11.469
Sn	1.000	+/-	22.491
Sb	208.663	+/-	35.830
Ba	1.000	+/-	78.223
La	1.000	+/-	74.812
Ce	1.000	+/-	90.223
Au	1.000	+/-	13.882
Hg	1.000	+/-	8.743
Pb	47.603	+/-	9.543
Bi	1.000	+/-	86.605
Th	1.000	+/-	103.566

mRFA -Ergebnisse

XL3t-69288

Reading No 8
Mode Mining
Time 2021-12-21 12:26
Duration 121.18
Units ppm
Sigma Value 2
Sequence Final
Flags 3mm
INV NR Pl.O.147
OBJEKT TAFELGEMAELEN
MATERIAL HOLZ METALL FASSUNG
ANALYSESTELLE P8 VS RAHMENWULST
MESSAUFBAU STATIV
FILTER m30lo30hi3li30
Schadstoffmessung
User Login Raquet

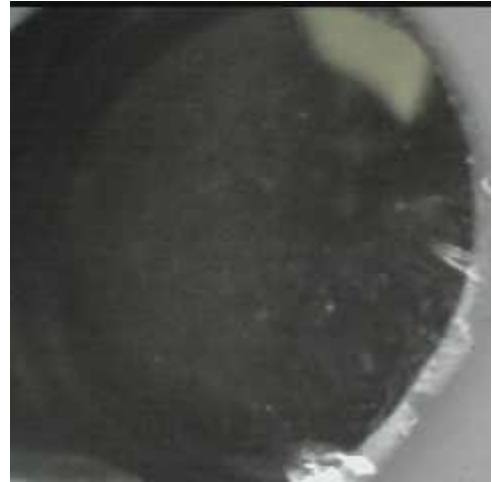


Ele	ppm	+/-	$\pm 2\sigma$
Mg	1.000	+/-	8413.303
Al	28714.701	+/-	1796.674
Bal	793341.125	+/-	1939.654
Si	34260.055	+/-	1023.651
P	27230.279	+/-	447.936
S	22778.973	+/-	290.833
Cl	3478.326	+/-	84.669
K	3674.726	+/-	240.414
Ca	64035.684	+/-	796.316
Ti	2940.010	+/-	269.371
V	181.872	+/-	48.037
Cr	131.799	+/-	39.765
Mn	1.000	+/-	104.757
Fe	16866.789	+/-	380.456
Co	1.000	+/-	109.040
Ni	1.000	+/-	37.285
Cu	73.930	+/-	22.886
Zn	85.738	+/-	20.942
As	30.490	+/-	11.555
Se	1.000	+/-	8.052
Rb	21.670	+/-	7.216
Sr	44.683	+/-	4.260
Y	1.000	+/-	2.290
Zr	13.147	+/-	10.907
Nb	1.000	+/-	3.459
Ag	1.000	+/-	12.436
Cd	1.000	+/-	14.909
Sn	1.000	+/-	32.977
Sb	1.000	+/-	31.381
Ba	1.000	+/-	87.739
La	1.000	+/-	82.949
Ce	1.000	+/-	101.679
Au	2036.475	+/-	71.959
Hg	8.153	+/-	7.694
Pb	51.330	+/-	10.072
Bi	1.000	+/-	119.870
Th	1.000	+/-	161.712

mRFA -Ergebnisse

XL3t-69288

Reading No 9
Mode Mining
Time 2021-12-21 12:31
Duration 120.32
Units ppm
Sigma Value 2
Sequence Final
Flags
INV NR Pl.O.147
OBJEKT TAFELGEMAEDELDE
MATERIAL HOLZ METALL FASSUNG
ANALYSESTELLE P9 VS RAHMENKEHLE
MESSAUFBAU STATIV
FILTER m30lo30hi3li30
Schadstoffmessung
User Login Raquet



Ele	ppm	+/-	±2σ
Mg	1.000	+/-	9468.717
Al	9531.846	+/-	940.463
Bal	867513.813	+/-	752.846
Si	29655.953	+/-	708.837
P	596.147	+/-	121.764
S	15434.432	+/-	165.730
Cl	2578.805	+/-	50.335
K	3850.024	+/-	190.261
Ca	53845.660	+/-	469.694
Ti	1829.007	+/-	151.422
V	92.321	+/-	25.250
Cr	79.724	+/-	19.657
Mn	1.000	+/-	57.327
Fe	11435.349	+/-	183.105
Co	1.000	+/-	51.430
Ni	1.000	+/-	25.029
Cu	710.314	+/-	27.959
Zn	129.322	+/-	11.288
As	469.405	+/-	29.754
Se	1.000	+/-	3.828
Rb	14.692	+/-	5.436
Sr	40.030	+/-	2.346
Y	1.000	+/-	2.498
Zr	17.435	+/-	12.332
Nb	3.992	+/-	3.555
Ag	636.206	+/-	17.051
Cd	12.170	+/-	6.663
Sn	1.000	+/-	10.535
Sb	1.000	+/-	16.090
Ba	1.000	+/-	46.139
La	1.000	+/-	43.045
Ce	-339.000	+/-	92.704
Au	1.000	+/-	6.787
Hg	1.000	+/-	2.994
Pb	1523.379	+/-	26.968
Bi	1.000	+/-	167.649
Th	1.000	+/-	175.665

mRFA -Ergebnisse

XL3t-69288

Reading No 10
Mode Mining
Time 2021-12-21 12:35
Duration 120.75
Units ppm
Sigma Value 2
Sequence Final
Flags
INV NR Pl.O.147
OBJEKT TAFELGEMAELEN
MATERIAL HOLZ METALL FASSUNG
ANALYSESTELLE P10 VS RAHMENLEISTE
MESSAUFBAU STATIV
FILTER m30lo30hi3li30
Schadstoffmessung
User Login Raquet

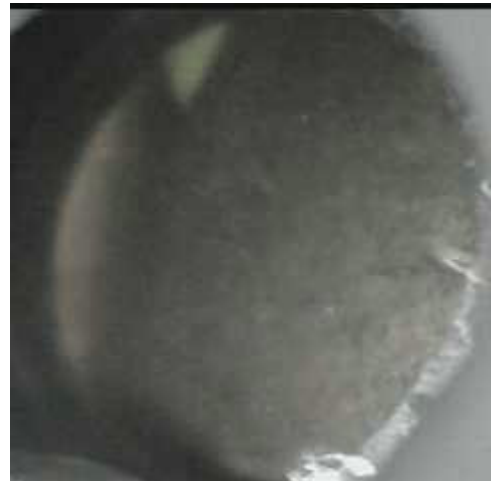


Ele	ppm	+/-	$\pm 2\sigma$
Mg	1.000	+/-	5743.863
Al	5634.007	+/-	610.986
Bal	880128.875	+/-	768.145
Si	27571.936	+/-	628.378
P	1042.964	+/-	102.234
S	17767.547	+/-	245.573
Cl	3898.195	+/-	65.036
K	4779.819	+/-	182.578
Ca	21104.572	+/-	318.925
Ti	698.146	+/-	128.412
V	1.000	+/-	34.626
Cr	28.646	+/-	18.865
Mn	1.000	+/-	88.106
Fe	6279.303	+/-	152.059
Co	1.000	+/-	43.413
Ni	1.000	+/-	26.235
Cu	9155.138	+/-	150.354
Zn	919.077	+/-	30.545
As	3185.951	+/-	109.589
Se	1.000	+/-	10.083
Rb	1.000	+/-	24.189
Sr	8.918	+/-	2.825
Y	1.000	+/-	10.151
Zr	1.000	+/-	43.709
Nb	34.147	+/-	12.441
Ag	10.750	+/-	3.996
Cd	11.298	+/-	5.789
Sn	248.686	+/-	12.569
Sb	20.368	+/-	15.012
Ba	1.000	+/-	41.352
La	1.000	+/-	38.536
Ce	-339.000	+/-	84.160
Au	1.000	+/-	15.749
Hg	1.000	+/-	8.936
Pb	17471.635	+/-	230.098
Bi	1.000	+/-	499.467
Th	1.000	+/-	626.983

mRFA -Ergebnisse

XL3t-69288

Reading No 11
Mode Mining
Time 2021-12-21 12:40
Duration 121.03
Units ppm
Sigma Value 2
Sequence Final
Flags
INV NR Pl.O.147
OBJEKT TAFELGEMAEDELDE
MATERIAL HOLZ METALL FASSUNG
ANALYSESTELLE P11 VS HINTERGRUND GRAVIERUNG
MESSAUFBAU STATIV
FILTER m30lo30hi3li30
Schadstoffmessung
User Login Raquet



Ele	ppm	+/-	$\pm 2\sigma$
Mg	1.000	+/-	8630.115
Al	28873.936	+/-	1623.340
Bal	791300.438	+/-	1047.015
Si	22287.410	+/-	717.792
P	36514.379	+/-	392.549
S	22890.240	+/-	196.994
Cl	3088.350	+/-	53.660
K	3337.568	+/-	161.670
Ca	71355.750	+/-	504.239
Ti	2890.472	+/-	188.336
V	158.572	+/-	30.439
Cr	119.425	+/-	24.095
Mn	1.000	+/-	54.186
Fe	14398.813	+/-	183.033
Co	1.000	+/-	52.449
Ni	1.000	+/-	22.235
Cu	75.342	+/-	13.120
Zn	91.436	+/-	11.940
As	33.514	+/-	6.983
Se	1.000	+/-	4.796
Rb	32.582	+/-	4.121
Sr	47.594	+/-	2.323
Y	1.000	+/-	1.022
Zr	19.108	+/-	5.841
Nb	1.000	+/-	1.913
Ag	14.122	+/-	3.889
Cd	8.396	+/-	5.333
Sn	1.000	+/-	10.911
Sb	1.000	+/-	21.599
Ba	1.000	+/-	37.545
La	1.000	+/-	34.853
Ce	-339.000	+/-	75.765
Au	2403.993	+/-	41.340
Hg	9.619	+/-	4.237
Pb	48.974	+/-	5.233
Bi	1.000	+/-	61.591
Th	1.000	+/-	82.342

mRFA -Ergebnisse

XL3t-69288

Reading No 12
Mode Mining
Time 2021-12-21 12:45
Duration 121.14
Units ppm
Sigma Value 2
Sequence Final
Flags
INV NR Pl.O.147
OBJEKT TAFELGEMAEDELDE
MATERIAL HOLZ METALL FASSUNG
ANALYSESTELLE P12 VS NIMBUS
MESSAUFBAU STATIV
FILTER m30lo30hi3li30
Schadstoffmessung
User Login Raquet



Ele	ppm	+/-	$\pm 2\sigma$
Mg	1.000	+/-	8226.060
Al	23398.063	+/-	1489.680
Bal	809337.000	+/-	991.782
Si	22870.672	+/-	759.393
P	36682.785	+/-	412.009
S	16462.404	+/-	168.843
Cl	1983.215	+/-	48.013
K	3473.369	+/-	159.329
Ca	67687.234	+/-	497.113
Ti	2364.748	+/-	170.092
V	118.754	+/-	27.776
Cr	128.696	+/-	22.707
Mn	1.000	+/-	54.454
Fe	12601.577	+/-	176.532
Co	1.000	+/-	50.727
Ni	1.000	+/-	23.313
Cu	69.175	+/-	13.496
Zn	78.684	+/-	12.142
As	21.734	+/-	7.129
Se	1.000	+/-	5.124
Rb	28.794	+/-	4.233
Sr	46.392	+/-	2.369
Y	1.000	+/-	1.077
Zr	15.051	+/-	6.048
Nb	1.000	+/-	1.637
Ag	19.801	+/-	4.303
Cd	9.996	+/-	5.648
Sn	12.093	+/-	7.724
Sb	1.000	+/-	17.708
Ba	1.000	+/-	39.581
La	1.000	+/-	36.875
Ce	-339.000	+/-	80.241
Au	2526.104	+/-	43.765
Hg	7.507	+/-	4.353
Pb	56.142	+/-	5.636
Bi	1.000	+/-	63.892
Th	1.000	+/-	110.718

mRFA -Ergebnisse

XL3t-69288

Reading No 13
Mode Mining
Time 2021-12-21 12:49
Duration 121.98
Units ppm
Sigma Value 2
Sequence Final
Flags
INV NR Pl.O.147
OBJEKT TAFELGEMAEDELDE
MATERIAL HOLZ METALL FASSUNG
ANALYSESTELLE P13 VS BLAU
MESSAUFBAU STATIV
FILTER m30lo30hi3li30
Schadstoffmessung
User Login Raquet



Ele	ppm	+/-	$\pm 2\sigma$
Mg	1.000	+/-	6181.357
Al	5414.615	+/-	728.665
Bal	824367.875	+/-	942.826
Si	36756.762	+/-	680.893
P	902.227	+/-	100.598
S	9625.196	+/-	101.664
Cl	758.885	+/-	27.189
K	4537.521	+/-	177.424
Ca	74227.242	+/-	522.662
Ti	653.574	+/-	118.334
V	37.845	+/-	20.922
Cr	1.000	+/-	24.563
Mn	1.000	+/-	50.009
Fe	8189.805	+/-	137.170
Co	1.000	+/-	42.382
Ni	1.000	+/-	23.608
Cu	33404.461	+/-	259.125
Zn	271.553	+/-	23.766
As	407.611	+/-	15.483
Se	1.000	+/-	2.406
Rb	18.665	+/-	3.215
Sr	45.246	+/-	2.510
Y	1.000	+/-	1.261
Zr	15.180	+/-	6.264
Nb	1.000	+/-	2.298
Ag	1.000	+/-	5.881
Cd	17.172	+/-	6.329
Sn	10.627	+/-	8.261
Sb	78.022	+/-	16.937
Ba	1.000	+/-	43.439
La	1.000	+/-	40.309
Ce	-339.000	+/-	87.824
Au	130.755	+/-	12.483
Hg	1.000	+/-	3.020
Pb	129.164	+/-	8.179
Bi	1.000	+/-	69.091
Th	1.000	+/-	84.793

mRFA -Ergebnisse

XL3t-69288

Reading No 14
Mode Mining
Time 2021-12-21 12:53
Duration 121.14
Units ppm
Sigma Value 2
Sequence Final
Flags
INV NR Pl.O.147
OBJEKT TAFELGEMAEDELDE
MATERIAL HOLZ METALL FASSUNG
ANALYSESTELLE P14 VS BLAU UEBERMALUNG
MESSAUFBAU STATIV
FILTER m30lo30hi3li30
Schadstoffmessung
User Login Raquet



Ele	ppm	+/-	$\pm 2\sigma$
Mg	9397.312	+/-	6303.617
Al	10238.505	+/-	808.896
Bal	795734.250	+/-	1286.387
Si	42618.848	+/-	667.370
P	598.951	+/-	86.596
S	11320.648	+/-	107.970
Cl	990.814	+/-	25.605
K	3276.667	+/-	168.949
Ca	36881.453	+/-	357.462
Ti	544.985	+/-	121.410
V	34.170	+/-	21.833
Cr	1.000	+/-	19.866
Mn	1.000	+/-	69.654
Fe	8333.479	+/-	140.047
Co	1.000	+/-	44.670
Ni	1.000	+/-	26.163
Cu	78068.336	+/-	573.237
Zn	559.604	+/-	37.576
As	896.209	+/-	24.169
Se	1.000	+/-	2.442
Rb	16.029	+/-	3.414
Sr	41.432	+/-	2.909
Y	1.000	+/-	1.445
Zr	9.562	+/-	6.487
Nb	1.000	+/-	2.051
Ag	8.440	+/-	4.429
Cd	13.781	+/-	6.642
Sn	32.727	+/-	9.445
Sb	266.696	+/-	21.167
Ba	1.000	+/-	47.618
La	1.000	+/-	44.373
Ce	-339.000	+/-	96.461
Au	62.970	+/-	13.418
Hg	1.000	+/-	4.972
Pb	54.134	+/-	6.990
Bi	1.000	+/-	67.559
Th	1.000	+/-	86.704

mRFA -Ergebnisse

XL3t-69288

Reading No 15
Mode Mining
Time 2021-12-21 13:00
Duration 120.10
Units ppm
Sigma Value 2
Sequence Final
Flags
INV NR Pl.O.147
OBJEKT TAFELGEMAELEN
MATERIAL HOLZ METALL FASSUNG
ANALYSESTELLE P15 VS PAILLETTE
MESSAUFBAU STATIV
FILTER m30lo30hi3li30
Schadstoffmessung
User Login Raquet



Ele	ppm	+/-	$\pm 2\sigma$
Mg	1.000	+/-	6192.954
Al	5018.207	+/-	677.578
Bal	806450.125	+/-	1354.337
Si	30612.693	+/-	582.838
P	357.023	+/-	77.557
S	8771.853	+/-	97.302
Cl	2303.177	+/-	37.061
K	2953.521	+/-	163.441
Ca	31653.219	+/-	345.196
Ti	327.940	+/-	110.768
V	38.107	+/-	20.155
Cr	1.000	+/-	18.709
Mn	117.050	+/-	56.423
Fe	5848.745	+/-	125.100
Co	1.000	+/-	42.319
Ni	164.975	+/-	34.803
Cu	91849.797	+/-	759.597
Zn	11505.034	+/-	134.780
As	647.256	+/-	38.500
Se	1.000	+/-	4.841
Rb	11.098	+/-	6.792
Sr	38.033	+/-	3.338
Y	1.000	+/-	3.543
Zr	1.000	+/-	21.045
Nb	1.000	+/-	3.974
Ag	9.872	+/-	4.940
Cd	10.909	+/-	7.223
Sn	14.647	+/-	9.956
Sb	220.768	+/-	22.429
Ba	1.000	+/-	53.790
La	1.000	+/-	50.085
Ce	-339.000	+/-	109.757
Au	1.000	+/-	10.525
Hg	1.000	+/-	9.129
Pb	1076.050	+/-	31.463
Bi	1.000	+/-	170.114
Th	1.000	+/-	216.578

mRFA -Ergebnisse

XL3t-69288

Reading No 16
Mode Mining
Time 2021-12-21 13:03
Duration 120.75
Units ppm
Sigma Value 2
Sequence Final
Flags 3mm
INV NR Pl.O.147
OBJEKT TAFELGEMAEDELDE
MATERIAL HOLZ METALL FASSUNG
ANALYSESTELLE P16 VS PAILLETTE
MESSAUFBAU STATIV
FILTER m30lo30hi3li30
Schadstoffmessung
User Login Raquet



Ele	ppm	+/-	$\pm 2\sigma$
Mg	1.000	+/-	8712.830
Al	5667.440	+/-	1194.906
Bal	698337.500	+/-	4014.611
Si	17870.922	+/-	694.071
P	226.211	+/-	106.004
S	10842.457	+/-	187.581
Cl	9084.710	+/-	162.333
K	1476.232	+/-	167.424
Ca	10932.271	+/-	268.635
Ti	1.000	+/-	120.758
V	66.370	+/-	25.369
Cr	1.000	+/-	24.455
Mn	105.201	+/-	79.684
Fe	2311.203	+/-	120.727
Co	1.000	+/-	73.403
Ni	739.754	+/-	71.920
Cu	195018.844	+/-	2800.853
Zn	43793.793	+/-	698.550
As	1.000	+/-	86.600
Se	1.000	+/-	13.578
Rb	1.000	+/-	30.976
Sr	22.185	+/-	6.309
Y	16.453	+/-	12.512
Zr	1.000	+/-	46.368
Nb	1.000	+/-	12.479
Ag	1.000	+/-	21.895
Cd	1.000	+/-	32.540
Sn	45.150	+/-	42.281
Sb	274.252	+/-	74.671
Ba	225.116	+/-	187.686
La	1.000	+/-	278.950
Ce	1.000	+/-	354.967
Au	1.000	+/-	25.990
Hg	53.573	+/-	13.492
Pb	2890.447	+/-	114.671
Bi	1.000	+/-	539.959
Th	1.000	+/-	759.487

mRFA -Ergebnisse

XL3t-69288

Reading No 19
Mode Mining
Time 2021-12-21 13:32
Duration 121.37
Units ppm
Sigma Value 2
Sequence Final
Flags 3mm
INV NR Pl.O.147
OBJEKT TAFELGEMAELENDE
MATERIAL HOLZ METALL FASSUNG
ANALYSESTELLE P17 VS PAILLETTE
MESSAUFBAU STATIV
FILTER m30lo30hi3li30
Schadstoffmessung
User Login Raquet



Ele	ppm	+/-	$\pm 2\sigma$
Mg	1.000	+/-	9385.766
Al	6276.180	+/-	1089.249
Bal	715252.063	+/-	3599.008
Si	21203.412	+/-	698.932
P	354.574	+/-	94.380
S	8677.369	+/-	151.625
Cl	10491.743	+/-	173.491
K	2641.193	+/-	196.872
Ca	13568.562	+/-	298.980
Ti	1.000	+/-	112.243
V	66.243	+/-	23.512
Cr	1.000	+/-	23.831
Mn	316.698	+/-	89.552
Fe	2397.670	+/-	122.369
Co	1.000	+/-	49.034
Ni	717.139	+/-	68.886
Cu	172318.234	+/-	2425.595
Zn	39247.074	+/-	615.847
As	453.019	+/-	122.033
Se	1.000	+/-	16.636
Rb	1.000	+/-	33.499
Sr	41.996	+/-	7.328
Y	1.000	+/-	14.593
Zr	1.000	+/-	59.446
Nb	1.000	+/-	15.226
Ag	1.000	+/-	22.531
Cd	1.000	+/-	19.476
Sn	1.000	+/-	42.461
Sb	201.990	+/-	67.416
Ba	1.000	+/-	171.588
La	1.000	+/-	162.882
Ce	1.000	+/-	199.423
Au	1.000	+/-	27.688
Hg	1.000	+/-	25.072
Pb	5774.804	+/-	173.591
Bi	1.000	+/-	705.310
Th	1.000	+/-	815.747

mRFA -Ergebnisse

XL3t-69288

Reading No 20
Mode Mining
Time 2021-12-21 13:36
Duration 121.05
Units ppm
Sigma Value 2
Sequence Final
Flags
INV NR Pl.O.147
OBJEKT TAFELGEMAEDELDE
MATERIAL HOLZ METALL FASSUNG
ANALYSESTELLE P18 VS PAILLETTE
MESSAUFBAU STATIV
FILTER m30lo30hi3li30
Schadstoffmessung
User Login Raquet



Ele	ppm	+/-	$\pm 2\sigma$
Mg	10566.505	+/-	7968.609
Al	6827.079	+/-	858.398
Bal	780898.563	+/-	1516.581
Si	35601.348	+/-	687.362
P	512.748	+/-	95.289
S	11107.038	+/-	121.642
Cl	3139.209	+/-	47.455
K	3656.686	+/-	171.119
Ca	45213.293	+/-	432.391
Ti	342.599	+/-	111.018
V	32.626	+/-	20.232
Cr	1.000	+/-	18.771
Mn	111.478	+/-	56.607
Fe	4959.034	+/-	117.156
Co	1.000	+/-	40.356
Ni	185.555	+/-	34.931
Cu	82244.547	+/-	701.302
Zn	12007.938	+/-	139.635
As	672.633	+/-	44.169
Se	1.000	+/-	5.421
Rb	15.748	+/-	7.964
Sr	44.007	+/-	3.465
Y	1.000	+/-	4.047
Zr	1.000	+/-	24.967
Nb	1.000	+/-	4.545
Ag	8.287	+/-	4.645
Cd	1.000	+/-	8.223
Sn	11.339	+/-	9.416
Sb	166.021	+/-	20.499
Ba	1.000	+/-	50.800
La	1.000	+/-	47.502
Ce	-339.000	+/-	102.542
Au	1.000	+/-	11.220
Hg	1.000	+/-	5.727
Pb	1675.623	+/-	39.588
Bi	1.000	+/-	213.535
Th	1.000	+/-	255.184

mRFA -Ergebnisse

XL3t-69288

Reading No 1
Mode Mining
Time 2022-01-17 11:57
Duration 121.76
Units ppm
Sigma Value 2
Sequence Final
Flags
INV NR Pl.O.147
OBJEKT TAFELGEMAEDELDE
MATERIAL HOLZ METALL FASSUNG
ANALYSESTELLE P19 WAPPEN
MESSAUFBAU STATIV
FILTER m30lo30hi30li30
Schadstoffmessung
User Login Raquet

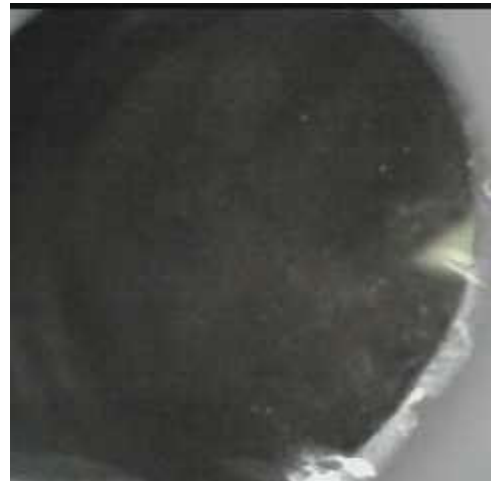


Ele	ppm	+/-	$\pm 2\sigma$
Mg	1.000	+/-	14200.726
Al	6947.982	+/-	967.033
Bal	835159.688	+/-	912.348
Si	31214.514	+/-	772.066
P	5901.793	+/-	198.413
S	24220.018	+/-	252.178
Cl	3466.336	+/-	60.624
K	5053.266	+/-	183.335
Ca	75081.492	+/-	681.406
Ti	409.141	+/-	114.917
V	24.037	+/-	21.076
Cr	43.709	+/-	19.191
Mn	1.000	+/-	56.566
Fe	4696.222	+/-	119.181
Co	1.000	+/-	37.697
Ni	1.000	+/-	25.213
Cu	249.442	+/-	19.343
Zn	229.302	+/-	17.901
As	1017.215	+/-	47.751
Se	1.000	+/-	7.107
Rb	13.438	+/-	8.445
Sr	13.162	+/-	3.623
Y	1.000	+/-	4.300
Zr	1.000	+/-	29.713
Nb	7.763	+/-	5.197
Ag	14.637	+/-	4.485
Cd	12.682	+/-	6.280
Sn	162.659	+/-	11.712
Sb	19.627	+/-	16.060
Ba	1.000	+/-	43.863
La	1.000	+/-	40.916
Ce	-339.000	+/-	88.515
Au	1.000	+/-	24.386
Hg	2089.576	+/-	30.563
Pb	3952.234	+/-	52.863
Bi	1.000	+/-	271.820
Th	1.000	+/-	271.094

mRFA -Ergebnisse

XL3t-69288

Reading No 2
Mode Mining
Time 2022-01-17 12:02
Duration 121.84
Units ppm
Sigma Value 2
Sequence Final
Flags
INV NR Pl.O.147
OBJEKT TAFELGEMAELEN
MATERIAL HOLZ METALL FASSUNG
ANALYSESTELLE P20 WAPPEN
MESSAUFBAU STATIV
FILTER m30lo30hi30li30
Schadstoffmessung
User Login Raquet

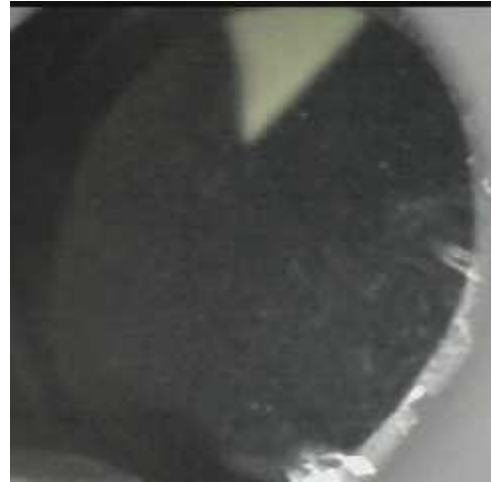


Ele	ppm	+/-	$\pm 2\sigma$
Mg	1.000	+/-	7955.429
Al	23462.760	+/-	1447.230
Bal	851633.000	+/-	982.245
Si	28445.426	+/-	746.529
P	410.363	+/-	120.098
S	9219.275	+/-	124.993
Cl	2699.731	+/-	57.000
K	5604.797	+/-	244.817
Ca	56148.328	+/-	518.713
Ti	4517.866	+/-	232.453
V	101.993	+/-	36.731
Cr	76.142	+/-	28.564
Mn	1.000	+/-	71.717
Fe	16257.091	+/-	251.215
Co	1.000	+/-	69.512
Ni	1.000	+/-	32.003
Cu	178.367	+/-	21.454
Zn	39.324	+/-	9.753
As	1.000	+/-	18.140
Se	1.000	+/-	3.496
Rb	16.275	+/-	4.627
Sr	41.643	+/-	2.730
Y	4.184	+/-	2.798
Zr	29.524	+/-	10.161
Nb	7.113	+/-	3.316
Ag	401.740	+/-	16.225
Cd	18.369	+/-	7.962
Sn	93.288	+/-	14.489
Sb	1.000	+/-	28.360
Ba	1.000	+/-	52.950
La	1.000	+/-	49.548
Ce	-339.000	+/-	106.399
Au	9.620	+/-	7.282
Hg	26.142	+/-	3.583
Pb	557.619	+/-	17.932
Bi	1.000	+/-	137.991
Th	1.000	+/-	141.855

mRFA -Ergebnisse

XL3t-69288

Reading No 3
Mode Mining
Time 2022-01-17 12:06
Duration 122.17
Units ppm
Sigma Value 2
Sequence Final
Flags
INV NR Pl.O.147
OBJEKT TAFELGEMAELENDE
MATERIAL HOLZ METALL FASSUNG
ANALYSESTELLE P21 MANTELFUTTER UEBERMALUNG 3
MESSAUFBAU STATIV
FILTER m30lo30hi30li30
Schadstoffmessung
User Login Raquet



Ele	ppm	+/-	$\pm 2\sigma$
Mg	1.000	+/-	9690.653
Al	28383.779	+/-	1343.973
Bal	744394.750	+/-	1654.426
Si	79696.945	+/-	975.449
P	412.262	+/-	91.543
S	13656.628	+/-	140.603
Cl	1441.172	+/-	29.840
K	13570.546	+/-	299.656
Ca	24107.717	+/-	298.251
Ti	347.695	+/-	151.822
V	1.000	+/-	28.939
Cr	613.312	+/-	25.742
Mn	1.000	+/-	54.997
Fe	5596.513	+/-	121.427
Co	934.445	+/-	58.087
Ni	248.012	+/-	36.628
Cu	81695.758	+/-	733.884
Zn	820.292	+/-	42.255
As	3344.348	+/-	59.912
Se	1.000	+/-	7.565
Rb	31.874	+/-	9.418
Sr	30.696	+/-	2.784
Y	1.000	+/-	3.135
Zr	1.000	+/-	23.942
Nb	1.000	+/-	5.095
Ag	21.013	+/-	5.100
Cd	10.672	+/-	6.815
Sn	1.000	+/-	13.730
Sb	294.957	+/-	22.193
Ba	1.000	+/-	49.964
La	1.000	+/-	46.408
Ce	-339.000	+/-	101.210
Au	1.000	+/-	16.923
Hg	1.000	+/-	9.574
Pb	346.550	+/-	16.986
Bi	1.000	+/-	379.534
Th	1.000	+/-	299.404

mRFA -Ergebnisse

XL3t-69288

Reading No 4
Mode Mining
Time 2022-01-17 12:13
Duration 122.05
Units ppm
Sigma Value 2
Sequence Final
Flags
INV NR Pl.O.147
OBJEKT TAFELGEMAELENDE
MATERIAL HOLZ METALL FASSUNG
ANALYSESTELLE P22 MANTELFUTTER UEBERMALUNG 2
MESSAUFBAU STATIV
FILTER m30lo30hi30li30
Schadstoffmessung
User Login Raquet



Ele	ppm	+/-	$\pm 2\sigma$
Mg	1.000	+/-	16208.133
Al	1769.683	+/-	873.506
Bal	824578.000	+/-	1446.605
Si	47994.848	+/-	1098.661
P	200.172	+/-	109.210
S	6105.375	+/-	125.875
Cl	2339.138	+/-	60.899
K	15119.014	+/-	405.036
Ca	27143.516	+/-	464.506
Ti	282.981	+/-	128.806
V	1.000	+/-	26.695
Cr	1.000	+/-	23.941
Mn	1.000	+/-	121.375
Fe	7774.245	+/-	207.434
Co	4320.131	+/-	141.071
Ni	2030.530	+/-	89.036
Cu	41712.152	+/-	704.473
Zn	569.125	+/-	42.126
As	14660.443	+/-	298.950
Se	1.000	+/-	28.437
Rb	139.307	+/-	29.681
Sr	36.713	+/-	4.006
Y	1.000	+/-	10.740
Zr	1.000	+/-	86.955
Nb	17.544	+/-	16.675
Ag	18.382	+/-	9.305
Cd	1.000	+/-	11.744
Sn	26.949	+/-	18.369
Sb	396.276	+/-	43.050
Ba	1.000	+/-	97.690
La	1.000	+/-	91.282
Ce	-339.000	+/-	199.407
Au	1.000	+/-	41.394
Hg	1.000	+/-	25.729
Pb	902.499	+/-	39.273
Bi	1862.991	+/-	706.377
Th	1.000	+/-	919.491

mRFA -Ergebnisse

XL3t-69288

Reading No 5
Mode Mining
Time 2022-01-17 12:19
Duration 120.09
Units ppm
Sigma Value 2
Sequence Final
Flags
INV NR Pl.O.147
OBJEKT TAFELGEMAEDELDE
MATERIAL HOLZ METALL FASSUNG
ANALYSESTELLE P23 DRACHE STREUMATERIAL
MESSAUFBAU STATIV
FILTER m30lo30hi30li30
Schadstoffmessung
User Login Raquet



Ele	ppm	+/-	$\pm 2\sigma$
Mg	1.000	+/-	9819.561
Al	11480.875	+/-	947.213
Bal	812060.938	+/-	1176.278
Si	69113.930	+/-	1176.931
P	7674.033	+/-	203.360
S	25342.232	+/-	347.392
Cl	4697.719	+/-	78.791
K	3914.413	+/-	171.319
Ca	23195.232	+/-	348.497
Ti	315.820	+/-	99.387
V	28.370	+/-	17.907
Cr	20.462	+/-	19.793
Mn	157.810	+/-	64.536
Fe	10414.116	+/-	213.256
Co	1.000	+/-	56.322
Ni	1.000	+/-	28.585
Cu	9062.963	+/-	153.693
Zn	174.739	+/-	16.979
As	4906.147	+/-	125.141
Se	1.000	+/-	12.919
Rb	1.000	+/-	29.740
Sr	41.915	+/-	3.544
Y	1.000	+/-	10.501
Zr	1.000	+/-	44.153
Nb	19.996	+/-	12.482
Ag	4.989	+/-	3.869
Cd	11.716	+/-	5.945
Sn	19.132	+/-	8.241
Sb	21.100	+/-	15.625
Ba	1.000	+/-	43.760
La	1.000	+/-	41.000
Ce	-339.000	+/-	89.345
Au	1.000	+/-	16.375
Hg	1.000	+/-	9.143
Pb	17321.441	+/-	236.077
Bi	1.000	+/-	558.239
Th	1.000	+/-	635.405

mRFA -Ergebnisse

XL3t-69288

Reading No 6
Mode Mining
Time 2022-01-17 12:27
Duration 121.01
Units ppm
Sigma Value 2
Sequence Final
Flags
INV NR Pl.O.147
OBJEKT TAFELGEMAEDELDE
MATERIAL HOLZ METALL FASSUNG
ANALYSESTELLE P24 MANTEL STIFTERIN
MESSAUFBAU STATIV
FILTER m30lo30hi30li30
Schadstoffmessung
User Login Raquet



Ele	ppm	+/-	±2σ
Mg	10508.850	+/-	7570.693
Al	9766.210	+/-	978.759
Bal	803326.313	+/-	910.600
Si	47136.691	+/-	853.186
P	756.517	+/-	129.529
S	16825.662	+/-	154.298
Cl	2894.864	+/-	48.286
K	6581.834	+/-	184.348
Ca	89204.938	+/-	553.669
Ti	887.356	+/-	120.131
V	67.793	+/-	20.955
Cr	42.265	+/-	18.164
Mn	1.000	+/-	48.033
Fe	10681.734	+/-	146.953
Co	1.000	+/-	42.855
Ni	1.000	+/-	19.605
Cu	488.742	+/-	20.058
Zn	74.415	+/-	7.975
As	182.572	+/-	14.874
Se	1.000	+/-	1.939
Rb	15.472	+/-	3.097
Sr	36.526	+/-	1.897
Y	1.000	+/-	1.221
Zr	10.069	+/-	6.732
Nb	1.000	+/-	2.284
Ag	5.036	+/-	3.015
Cd	13.194	+/-	4.648
Sn	10.837	+/-	6.159
Sb	1.000	+/-	14.737
Ba	1.000	+/-	31.584
La	1.000	+/-	29.224
Ce	-339.000	+/-	63.909
Au	1.000	+/-	4.504
Hg	1.000	+/-	2.934
Pb	482.122	+/-	12.295
Bi	1.000	+/-	72.721
Th	1.000	+/-	93.945

mRFA -Ergebnisse

XL3t-69288

Reading No 7
Mode Mining
Time 2022-01-17 12:31
Duration 120.46
Units ppm
Sigma Value 2
Sequence Final
Flags
INV NR Pl.O.147
OBJEKT TAFELGEMAEDELDE
MATERIAL HOLZ METALL FASSUNG
ANALYSESTELLE P25 MANTEL STREUMATERIAL
MESSAUFBAU STATIV
FILTER m30lo30hi30li30
Schadstoffmessung
User Login Raquet



Ele	ppm	+/-	$\pm 2\sigma$
Mg	1.000	+/-	5910.239
Al	9027.847	+/-	840.126
Bal	829363.688	+/-	811.855
Si	59114.910	+/-	903.047
P	1732.535	+/-	125.252
S	12916.161	+/-	130.223
Cl	2716.693	+/-	45.126
K	7704.249	+/-	209.604
Ca	56882.973	+/-	433.794
Ti	852.866	+/-	132.713
V	89.678	+/-	23.364
Cr	54.913	+/-	20.184
Mn	200.751	+/-	54.703
Fe	17083.010	+/-	195.253
Co	1.000	+/-	53.430
Ni	1.000	+/-	21.130
Cu	987.188	+/-	27.824
Zn	66.293	+/-	8.202
As	285.625	+/-	19.528
Se	1.000	+/-	2.533
Rb	13.469	+/-	3.830
Sr	38.100	+/-	1.986
Y	1.000	+/-	1.604
Zr	11.727	+/-	8.580
Nb	1.000	+/-	3.033
Ag	7.519	+/-	3.295
Cd	12.468	+/-	4.915
Sn	13.783	+/-	6.609
Sb	1.000	+/-	15.355
Ba	1.000	+/-	33.638
La	1.000	+/-	31.074
Ce	-339.000	+/-	68.069
Au	1.000	+/-	5.002
Hg	1.000	+/-	2.207
Pb	823.581	+/-	16.631
Bi	1.000	+/-	110.272
Th	1.000	+/-	121.404

mRFA -Ergebnisse

XL3t-69288

Reading No 8
Mode Mining
Time 2022-01-17 12:36
Duration 120.05
Units ppm
Sigma Value 2
Sequence Final
Flags
INV NR Pl.O.147
OBJEKT TAFELGEMAELENDE
MATERIAL HOLZ METALL FASSUNG
ANALYSESTELLE P26 MANTERFUTTER UEBERMALUNG 2
MESSAUFBAU STATIV
FILTER m30lo30hi30li30
Schadstoffmessung
User Login Raquet

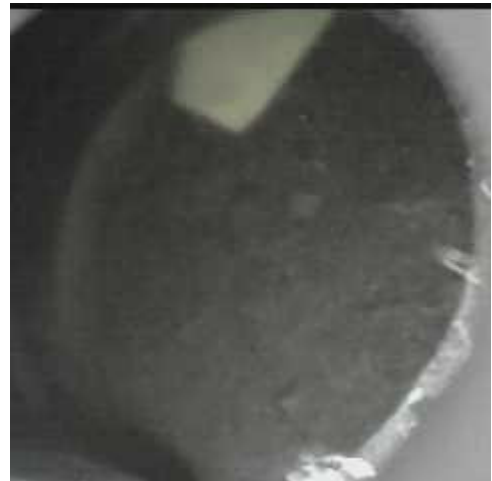


Ele	ppm	+/-	$\pm 2\sigma$
Mg	1.000	+/-	13370.857
Al	22688.627	+/-	1565.738
Bal	740009.250	+/-	1560.410
Si	74998.328	+/-	1099.270
P	849.958	+/-	134.123
S	18550.922	+/-	192.749
Cl	2125.768	+/-	44.371
K	9939.864	+/-	270.172
Ca	56288.504	+/-	532.249
Ti	672.482	+/-	181.957
V	39.586	+/-	34.084
Cr	546.175	+/-	28.840
Mn	93.469	+/-	60.900
Fe	12167.963	+/-	189.053
Co	835.421	+/-	69.088
Ni	224.864	+/-	36.235
Cu	55221.285	+/-	531.248
Zn	594.047	+/-	34.999
As	3139.172	+/-	55.959
Se	1.000	+/-	6.146
Rb	38.580	+/-	9.198
Sr	59.517	+/-	3.360
Y	1.000	+/-	3.288
Zr	1.000	+/-	27.595
Nb	1.000	+/-	5.786
Ag	12.249	+/-	4.953
Cd	1.000	+/-	7.683
Sn	16.340	+/-	9.793
Sb	229.952	+/-	22.033
Ba	1.000	+/-	52.052
La	1.000	+/-	48.249
Ce	-339.000	+/-	105.000
Au	1.000	+/-	15.753
Hg	1.000	+/-	9.005
Pb	657.710	+/-	21.393
Bi	1.000	+/-	363.667
Th	1.000	+/-	292.084

mRFA -Ergebnisse

XL3t-69288

Reading No 9
Mode Mining
Time 2022-01-17 12:42
Duration 120.96
Units ppm
Sigma Value 2
Sequence Final
Flags
INV NR Pl.O.147
OBJEKT TAFELGEMAEDELDE
MATERIAL HOLZ METALL FASSUNG
ANALYSESTELLE P27 URINGLAS
MESSAUFBAU STATIV
FILTER m30lo30hi30li30
Schadstoffmessung
User Login Raquet



Ele	ppm	+/-	$\pm 2\sigma$
Mg	7091.923	+/-	6706.987
Al	12145.052	+/-	919.905
Bal	772787.625	+/-	1999.021
Si	56079.277	+/-	1084.452
P	1360.433	+/-	107.890
S	16779.508	+/-	275.600
Cl	5505.189	+/-	98.828
K	3509.850	+/-	193.244
Ca	14165.187	+/-	282.378
Ti	943.153	+/-	161.663
V	1.000	+/-	39.709
Cr	1.000	+/-	25.463
Mn	114.245	+/-	77.726
Fe	9080.283	+/-	219.369
Co	1.000	+/-	61.626
Ni	1.000	+/-	38.240
Cu	54980.465	+/-	849.997
Zn	303.893	+/-	40.096
As	6562.767	+/-	237.357
Se	1.000	+/-	18.239
Rb	1.000	+/-	55.556
Sr	37.879	+/-	6.403
Y	1.000	+/-	24.046
Zr	1.000	+/-	95.979
Nb	34.984	+/-	28.249
Ag	28.744	+/-	6.829
Cd	1.000	+/-	8.669
Sn	1.000	+/-	16.261
Sb	320.991	+/-	29.109
Ba	1.000	+/-	102.830
La	1.000	+/-	93.694
Ce	-339.000	+/-	158.892
Au	1.000	+/-	33.603
Hg	1.000	+/-	18.426
Pb	38168.617	+/-	667.218
Bi	1.000	+/-	1052.338
Th	1.000	+/-	1339.955

mRFA -Ergebnisse

XL3t-69288

Reading No 11
Mode Mining
Time 2022-01-17 12:54
Duration 120.56
Units ppm
Sigma Value 2
Sequence Final
Flags
INV NR Pl.O.147
OBJEKT TAFELGEMAELENDE
MATERIAL HOLZ METALL FASSUNG
ANALYSESTELLE P28 UEBERMALUNG BLAU 2
MESSAUFBAU STATIV
FILTER m30lo30hi30li30
Schadstoffmessung
User Login Raquet



Ele	ppm	+/-	±2σ
Mg	12000.339	+/-	6589.773
Al	16961.035	+/-	1043.923
Bal	772492.375	+/-	1235.485
Si	76192.336	+/-	982.246
P	284.002	+/-	98.961
S	12101.333	+/-	127.329
Cl	1589.421	+/-	33.812
K	12634.283	+/-	266.289
Ca	46197.758	+/-	420.017
Ti	507.810	+/-	144.322
V	32.980	+/-	27.117
Cr	571.698	+/-	23.648
Mn	1.000	+/-	81.518
Fe	10351.545	+/-	160.436
Co	1042.323	+/-	63.476
Ni	263.977	+/-	33.100
Cu	31847.789	+/-	293.275
Zn	457.933	+/-	25.597
As	3347.021	+/-	50.008
Se	1.000	+/-	8.169
Rb	40.697	+/-	8.383
Sr	42.803	+/-	2.514
Y	1.000	+/-	2.774
Zr	1.000	+/-	26.892
Nb	1.000	+/-	4.431
Ag	4.893	+/-	3.901
Cd	8.827	+/-	5.906
Sn	10.532	+/-	8.058
Sb	101.868	+/-	16.825
Ba	1.000	+/-	42.721
La	1.000	+/-	39.856
Ce	-339.000	+/-	86.659
Au	1.000	+/-	12.416
Hg	1.000	+/-	7.543
Pb	614.152	+/-	17.901
Bi	300.241	+/-	208.369
Th	1.000	+/-	267.361

mRFA -Ergebnisse

XL3t-69288

Reading No 12
Mode Mining
Time 2022-01-17 13:04
Duration 120.18
Units ppm
Sigma Value 2
Sequence Final
Flags
INV NR Pl.O.147
OBJEKT TAFELGEMAEDELDE
MATERIAL HOLZ METALL FASSUNG
ANALYSESTELLE P29 INKARNAT JESUS
MESSAUFBAU STATIV
FILTER m30lo30hi30li30
Schadstoffmessung
User Login Raquet



Ele	ppm	+/-	$\pm 2\sigma$
Mg	1.000	+/-	8182.711
Al	937.491	+/-	764.424
Bal	832545.750	+/-	729.799
Si	8254.738	+/-	455.322
P	1.000	+/-	128.275
S	19003.859	+/-	170.839
Cl	574.188	+/-	30.883
K	1407.071	+/-	118.660
Ca	135372.672	+/-	708.936
Ti	122.480	+/-	65.537
V	13.545	+/-	12.152
Cr	1.000	+/-	15.371
Mn	1.000	+/-	37.365
Fe	1245.434	+/-	53.311
Co	1.000	+/-	18.362
Ni	1.000	+/-	17.407
Cu	270.247	+/-	15.678
Zn	7.801	+/-	5.412
As	25.126	+/-	7.379
Se	1.000	+/-	1.235
Rb	4.512	+/-	2.064
Sr	15.975	+/-	1.402
Y	3.623	+/-	1.433
Zr	9.117	+/-	4.559
Nb	9.384	+/-	1.937
Ag	7.573	+/-	2.970
Cd	13.867	+/-	4.453
Sn	1.000	+/-	8.295
Sb	15.031	+/-	11.120
Ba	1.000	+/-	29.081
La	1.000	+/-	27.015
Ce	-339.000	+/-	59.234
Au	1.000	+/-	2.995
Hg	19.828	+/-	2.381
Pb	120.621	+/-	6.237
Bi	1.000	+/-	52.627
Th	1.000	+/-	61.554

mRFA -Ergebnisse

XL3t-69288

Reading No 13
Mode Mining
Time 2022-01-17 13:08
Duration 121.17
Units ppm
Sigma Value 2
Sequence Final
Flags
INV NR Pl.O.147
OBJEKT TAFELGEMAEDELDE
MATERIAL HOLZ METALL FASSUNG
ANALYSESTELLE P30 INKARNAT DOROTHEA
MESSAUFBAU STATIV
FILTER m30lo30hi30li30
Schadstoffmessung
User Login Raquet



Ele	ppm	+/-	±2σ
Mg	46565.375	+/-	9082.337
Al	2072.711	+/-	785.816
Bal	787864.563	+/-	926.574
Si	9407.472	+/-	431.360
P	1.000	+/-	79.911
S	4050.487	+/-	69.428
Cl	766.466	+/-	28.810
K	1679.407	+/-	125.564
Ca	145608.531	+/-	725.264
Ti	142.554	+/-	71.844
V	14.827	+/-	13.289
Cr	1.000	+/-	21.801
Mn	1.000	+/-	35.569
Fe	1288.552	+/-	51.997
Co	1.000	+/-	17.562
Ni	1.000	+/-	16.544
Cu	315.412	+/-	15.817
Zn	7.667	+/-	5.196
As	26.850	+/-	6.261
Se	1.000	+/-	1.087
Rb	5.025	+/-	1.892
Sr	15.119	+/-	1.327
Y	3.715	+/-	1.335
Zr	9.600	+/-	4.136
Nb	10.527	+/-	1.846
Ag	8.032	+/-	2.709
Cd	16.915	+/-	4.110
Sn	9.271	+/-	5.249
Sb	12.809	+/-	10.014
Ba	1.000	+/-	26.399
La	1.000	+/-	24.428
Ce	-339.000	+/-	53.438
Au	1.000	+/-	3.098
Hg	16.436	+/-	2.159
Pb	81.720	+/-	5.134
Bi	1.000	+/-	42.565
Th	1.000	+/-	55.183