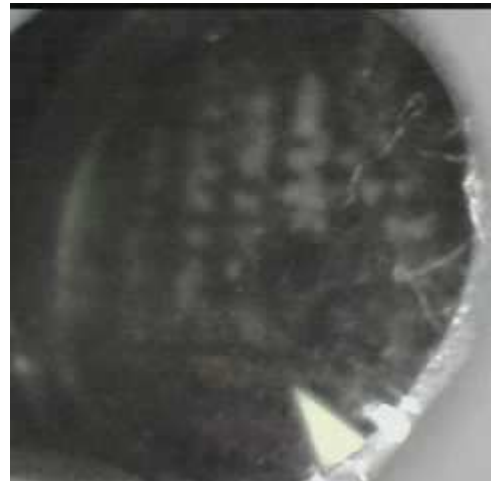


mRFA -Ergebnisse

XL3t-69288

Reading No 1
Mode Mining
Time 2017-05-08 15:50
Duration 121.59
Units ppm
Sigma Value 2
Sequence Final
Flags
INV NR Gm1279
OBJEKT TAFELGEMAELEN
MATERIAL HOLZ METALL FASSUNG
ANALYSESTELLE P15 GEWAND
MESSAUFBAU STATIV ANLIEGEND
FILTER m30lo30hi30li30
User Login Raquet



	ppm	+/-	Error
Ce	-339.000	+/-	136.809
La	1.000	+/-	61.905
Ba	1.000	+/-	66.312
Sb	1.000	+/-	21.189
Sn	10010.104	+/-	147.705
Cd	112.455	+/-	12.284
Ag	438.815	+/-	16.190
Bal	877639.250	+/-	1024.445
Nb	28.419	+/-	19.175
Zr	1.000	+/-	65.836
Y	1.000	+/-	16.135
Sr	113.831	+/-	6.520
Rb	1.000	+/-	39.771
Th	1.000	+/-	932.699
Bi	1.000	+/-	746.555
Au	122.597	+/-	31.715
As	4285.533	+/-	161.425
Se	1.000	+/-	13.764
Pb	25652.754	+/-	402.884
Hg	1.000	+/-	14.159
Zn	118.138	+/-	18.676
Cu	7493.867	+/-	157.199
Ni	1.000	+/-	36.212
Co	1.000	+/-	31.624
Fe	791.753	+/-	75.544
Mn	87.125	+/-	76.298
Cr	21.455	+/-	20.771
V	1.000	+/-	17.529
Ti	1.000	+/-	91.778
Ca	40202.211	+/-	642.636
K	3852.028	+/-	203.298
Al	2602.331	+/-	609.418
P	768.905	+/-	102.585
Si	9805.759	+/-	417.787
Cl	2418.598	+/-	55.545
S	13434.001	+/-	232.637
Mg	1.000	+/-	6126.602

mRFA -Ergebnisse

XL3t-69288

Reading No 2
Mode Mining
Time 2017-05-08 15:56
Duration 121.62
Units ppm
Sigma Value 2
Sequence Final
Flags 3mm
INV NR Gm1279
OBJEKT TAFELGEMAELEN
MATERIAL HOLZ METALL FASSUNG
ANALYSESTELLE P15 GEWAND
MESSAUFBAU STATIV ANLIEGEND
FILTER m30lo30hi30li30
User Login Raquet

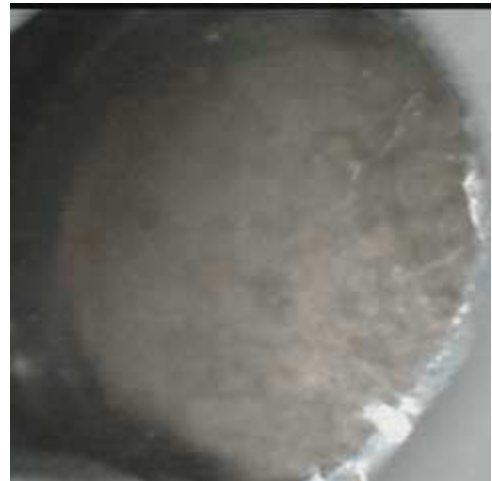


	ppm	+/-	Error
Ce	1.000	+/-	144.477
La	1.000	+/-	118.361
Ba	1.000	+/-	122.618
Sb	1.000	+/-	45.668
Sn	71.685	+/-	35.057
Cd	1.000	+/-	19.856
Ag	335.512	+/-	28.868
Bal	889041.875	+/-	1246.810
Nb	36.694	+/-	32.456
Zr	1.000	+/-	105.611
Y	1.000	+/-	26.528
Sr	79.044	+/-	8.434
Rb	1.000	+/-	80.129
Th	1.000	+/-	1858.256
Bi	1.000	+/-	1163.990
Au	483.748	+/-	61.014
As	7797.362	+/-	276.391
Se	1.000	+/-	17.593
Pb	39379.262	+/-	885.114
Hg	1.000	+/-	21.935
Zn	112.974	+/-	17.800
Cu	660.162	+/-	47.011
Ni	1.000	+/-	41.933
Co	1.000	+/-	60.789
Fe	854.946	+/-	102.469
Mn	1.000	+/-	116.458
Cr	1.000	+/-	31.637
V	1.000	+/-	21.311
Ti	1.000	+/-	101.346
Ca	9128.711	+/-	299.721
K	1147.902	+/-	184.996
Al	2046.191	+/-	676.207
P	4248.361	+/-	215.540
Si	14836.025	+/-	720.318
Cl	4931.717	+/-	155.226
S	24807.813	+/-	653.357
Mg	1.000	+/-	12565.776

mRFA -Ergebnisse

XL3t-69288

Reading No 3
Mode Mining
Time 2017-05-08 15:59
Duration 120.15
Units ppm
Sigma Value 2
Sequence Final
Flags
INV NR Gm1279
OBJEKT TAFELGEMAELEN
MATERIAL HOLZ METALL FASSUNG
ANALYSESTELLE P17 NIMBUS
MESSAUFBAU STATIV ANLIEGEND
FILTER m30lo30hi30li30
User Login Raquet



	ppm	+/-	Error
Ce	-339.000	+/-	117.892
La	1.000	+/-	53.555
Ba	1.000	+/-	57.158
Sb	1.000	+/-	25.521
Sn	103.960	+/-	15.664
Cd	12.412	+/-	7.567
Ag	827.890	+/-	22.827
Bal	881019.125	+/-	1011.252
Nb	34.254	+/-	25.557
Zr	1.000	+/-	83.965
Y	1.000	+/-	21.104
Sr	80.829	+/-	6.455
Rb	1.000	+/-	57.783
Th	1.000	+/-	1322.189
Bi	1.000	+/-	891.150
Au	1873.496	+/-	67.445
As	8883.644	+/-	230.479
Se	1.000	+/-	15.028
Pb	38589.926	+/-	644.177
Hg	1.000	+/-	16.252
Zn	105.907	+/-	15.072
Cu	525.045	+/-	31.939
Ni	1.000	+/-	33.939
Co	1.000	+/-	48.375
Fe	5487.730	+/-	175.457
Mn	1.000	+/-	98.458
Cr	40.494	+/-	21.389
V	17.302	+/-	17.097
Ti	186.681	+/-	95.183
Ca	3463.799	+/-	131.018
K	1405.276	+/-	213.165
Al	3445.394	+/-	726.627
P	8864.991	+/-	255.221
Si	18774.725	+/-	670.815
Cl	3706.692	+/-	88.427
S	22550.416	+/-	437.070
Mg	1.000	+/-	6502.975

mRFA -Ergebnisse

XL3t-69288

Reading No 4
Mode Mining
Time 2017-05-08 16:04
Duration 121.01
Units ppm
Sigma Value 2
Sequence Final
Flags
INV NR Gm1279
OBJEKT TAFELGEMAELEN
MATERIAL HOLZ METALL FASSUNG
ANALYSESTELLE P18 MANTELBORTE
MESSAUFBAU STATIV ANLIEGEND
FILTER m30lo30hi30li30
User Login Raquet



	ppm	+/-	Error
Ce	-339.000	+/-	89.608
La	1.000	+/-	41.093
Ba	1.000	+/-	44.056
Sb	1.000	+/-	17.086
Sn	112.622	+/-	11.828
Cd	13.677	+/-	6.199
Ag	357.716	+/-	12.384
Bal	921895.438	+/-	529.567
Nb	25.970	+/-	13.019
Zr	1.000	+/-	45.399
Y	1.000	+/-	10.707
Sr	103.410	+/-	4.756
Rb	1.000	+/-	26.443
Th	1.000	+/-	646.849
Bi	1.000	+/-	608.857
Au	383.633	+/-	29.306
As	5164.446	+/-	127.294
Se	1.000	+/-	10.225
Pb	18407.336	+/-	251.922
Hg	1.000	+/-	9.584
Zn	71.990	+/-	10.030
Cu	438.450	+/-	24.975
Ni	1.000	+/-	25.472
Co	1.000	+/-	21.127
Fe	336.275	+/-	49.054
Mn	1.000	+/-	54.100
Cr	36.237	+/-	16.527
V	1.000	+/-	14.720
Ti	1.000	+/-	64.741
Ca	9991.235	+/-	199.687
K	648.835	+/-	149.560
Al	744.973	+/-	485.882
P	11690.531	+/-	249.042
Si	5774.814	+/-	352.409
Cl	3126.889	+/-	63.372
S	20675.535	+/-	329.641
Mg	1.000	+/-	5238.525

mRFA -Ergebnisse

XL3t-69288

Reading No 5
Mode Mining
Time 2017-05-08 16:09
Duration 122.10
Units ppm
Sigma Value 2
Sequence Final
Flags
INV NR Gm1279
OBJEKT TAFELGEMAELEN
MATERIAL HOLZ METALL FASSUNG
ANALYSESTELLE P19 PRESSBROKAT
MESSAUFBAU STATIV ANLIEGEND
FILTER m30lo30hi30li30
User Login Raquet



	ppm	+/-	Error
Ce	-339.000	+/-	195.681
La	1.000	+/-	99.099
Ba	1.000	+/-	94.427
Sb	1.000	+/-	29.335
Sn	23882.471	+/-	390.062
Cd	177.256	+/-	18.694
Ag	948.899	+/-	29.599
Bal	815920.125	+/-	1870.831
Nb	1.000	+/-	21.297
Zr	1.000	+/-	71.552
Y	1.000	+/-	17.878
Sr	101.824	+/-	7.531
Rb	1.000	+/-	39.104
Th	1.000	+/-	1019.117
Bi	1.000	+/-	816.074
Au	576.686	+/-	45.714
As	475.349	+/-	155.633
Se	1.000	+/-	18.150
Pb	19352.164	+/-	351.126
Hg	77.217	+/-	16.919
Zn	1.000	+/-	40.123
Cu	66466.727	+/-	1017.358
Ni	1.000	+/-	46.641
Co	1.000	+/-	38.821
Fe	1708.548	+/-	101.966
Mn	1.000	+/-	90.270
Cr	1.000	+/-	23.646
V	1.000	+/-	24.222
Ti	202.994	+/-	113.542
Ca	35956.656	+/-	548.036
K	3617.050	+/-	216.674
Al	1772.390	+/-	669.132
P	542.055	+/-	85.783
Si	10496.852	+/-	417.367
Cl	2095.487	+/-	48.077
S	7295.367	+/-	128.761
Mg	8333.880	+/-	7745.929

mRFA -Ergebnisse

XL3t-69288

Reading No 6
Mode Mining
Time 2017-05-08 16:13
Duration 122.04
Units ppm
Sigma Value 2
Sequence Final
Flags
INV NR Gm1279
OBJEKT TAFELGEMAELEN
MATERIAL HOLZ METALL FASSUNG
ANALYSESTELLE P20 PRESSBROKAT
MESSAUFBAU STATIV ANLIEGEND
FILTER m30lo30hi30li30
User Login Raquet

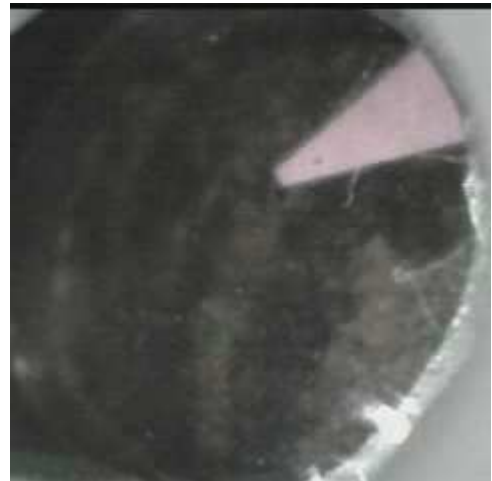


	ppm	+/-	Error
Ce	-339.000	+/-	416.101
La	1.000	+/-	213.460
Ba	145.021	+/-	136.850
Sb	1.000	+/-	43.049
Sn	4122.928	+/-	130.247
Cd	24.704	+/-	18.347
Ag	644.067	+/-	36.018
Bal	807683.563	+/-	2766.808
Nb	136.398	+/-	68.826
Zr	1.000	+/-	202.579
Y	1.000	+/-	53.611
Sr	48.104	+/-	12.810
Rb	1.000	+/-	114.255
Th	1.000	+/-	3658.338
Bi	1.000	+/-	2031.282
Au	1.000	+/-	58.254
As	12628.112	+/-	469.294
Se	1.000	+/-	21.382
Pb	96489.750	+/-	2209.836
Hg	1.000	+/-	33.103
Zn	114.171	+/-	18.623
Cu	609.563	+/-	48.457
Ni	1.000	+/-	56.008
Co	1.000	+/-	66.711
Fe	293.228	+/-	89.070
Mn	161.077	+/-	106.589
Cr	1.000	+/-	38.829
V	1.000	+/-	22.142
Ti	1.000	+/-	112.279
Ca	32334.037	+/-	806.797
K	1528.453	+/-	199.083
Al	1499.883	+/-	809.025
P	2006.234	+/-	158.780
Si	9985.944	+/-	520.969
Cl	2878.287	+/-	96.646
S	26666.408	+/-	738.055
Mg	1.000	+/-	13765.648

mRFA -Ergebnisse

XL3t-69288

Reading No 7
Mode Mining
Time 2017-05-08 16:24
Duration 121.17
Units ppm
Sigma Value 2
Sequence Final
Flags
INV NR Gm142
OBJEKT TAFELGEMAELENDE
MATERIAL HOLZ METALL FASSUNG
ANALYSESTELLE P21 PRESSBROKAT FRAU MIT HARFE
MESSAUFBAU STATIV ANLIEGEND
FILTER m30lo30hi30li30
User Login Raquet



	ppm	+/-	Error
Ce	-339.000	+/-	133.166
La	1.000	+/-	60.910
Ba	1.000	+/-	65.347
Sb	1.000	+/-	20.957
Sn	6404.358	+/-	106.031
Cd	78.220	+/-	11.213
Ag	349.048	+/-	14.938
Bal	891036.313	+/-	956.853
Nb	41.227	+/-	23.423
Zr	1.000	+/-	78.119
Y	1.000	+/-	19.488
Sr	100.067	+/-	6.712
Rb	1.000	+/-	38.174
Th	1.000	+/-	1086.360
Bi	1.000	+/-	980.169
Au	1.000	+/-	32.433
As	6427.153	+/-	198.176
Se	1.000	+/-	14.820
Pb	34105.129	+/-	552.419
Hg	1.000	+/-	15.584
Zn	83.220	+/-	14.267
Cu	2873.675	+/-	81.205
Ni	1.000	+/-	35.965
Co	1.000	+/-	44.688
Fe	3844.588	+/-	145.877
Mn	1.000	+/-	69.410
Cr	1.000	+/-	34.237
V	1.000	+/-	19.457
Ti	142.188	+/-	102.597
Ca	19647.830	+/-	379.834
K	3185.537	+/-	178.009
Al	1986.240	+/-	498.845
P	887.387	+/-	94.168
Si	11525.599	+/-	422.280
Cl	2657.903	+/-	60.009
S	14624.321	+/-	272.313
Mg	1.000	+/-	4939.417

mRFA -Ergebnisse

XL3t-69288

Reading No 8
Mode Mining
Time 2017-05-08 16:31
Duration 121.47
Units ppm
Sigma Value 2
Sequence Final
Flags
INV NR Gm142
OBJEKT TAFELGEMAELEN
MATERIAL HOLZ METALL FASSUNG
ANALYSESTELLE P22 PRESSBROKAT GRUENES KLEID
MESSAUFBAU STATIV ANLIEGEND
FILTER m30lo30hi30li30
User Login Raquet

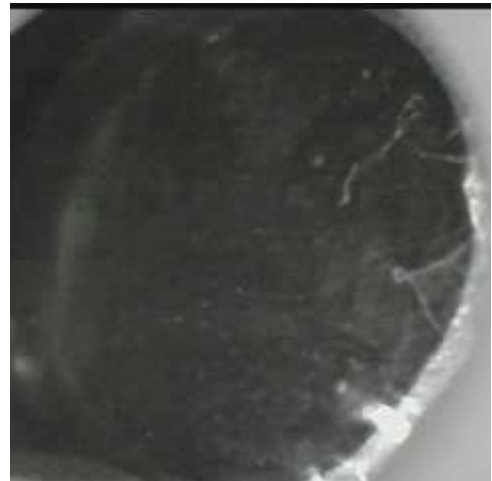


	ppm	+/-	Error
Ce	-339.000	+/-	129.181
La	1.000	+/-	58.627
Ba	1.000	+/-	62.174
Sb	1.000	+/-	20.248
Sn	7967.482	+/-	123.599
Cd	73.550	+/-	10.854
Ag	202.138	+/-	11.166
Bal	854064.688	+/-	1225.909
Nb	26.522	+/-	21.447
Zr	1.000	+/-	73.081
Y	1.000	+/-	18.017
Sr	73.447	+/-	6.083
Rb	1.000	+/-	42.437
Th	1.000	+/-	1076.416
Bi	1.000	+/-	800.448
Au	1.000	+/-	38.361
As	4456.499	+/-	175.255
Se	1.000	+/-	14.483
Pb	29452.781	+/-	479.199
Hg	1.000	+/-	15.807
Zn	167.673	+/-	23.836
Cu	16164.032	+/-	297.352
Ni	1.000	+/-	36.895
Co	1.000	+/-	34.090
Fe	1413.864	+/-	89.682
Mn	1.000	+/-	69.019
Cr	1.000	+/-	25.285
V	1.000	+/-	18.196
Ti	1.000	+/-	105.145
Ca	34877.273	+/-	593.088
K	3283.220	+/-	227.439
Al	3081.694	+/-	666.377
P	1849.174	+/-	120.892
Si	17969.578	+/-	573.499
Cl	3621.270	+/-	75.069
S	14414.804	+/-	252.295
Mg	6840.220	+/-	6819.043

mRFA -Ergebnisse

XL3t-69288

Reading No 9
Mode Mining
Time 2017-05-08 16:36
Duration 120.44
Units ppm
Sigma Value 2
Sequence Final
Flags
INV NR Gm142
OBJEKT TAFELGEMAELEN
MATERIAL HOLZ METALL FASSUNG
ANALYSESTELLE P23 MANTEL ALTER MANN ROTLACK
MESSAUFBAU STATIV ANLIEGEND
FILTER m30lo30hi30li30
User Login Raquet



	ppm	+/-	Error
Ce	-339.000	+/-	88.767
La	1.000	+/-	40.764
Ba	1.000	+/-	43.773
Sb	1.000	+/-	14.709
Sn	31.046	+/-	8.592
Cd	15.068	+/-	6.110
Ag	4.001	+/-	3.868
Bal	900745.188	+/-	716.885
Nb	1.000	+/-	16.689
Zr	1.000	+/-	41.732
Y	1.000	+/-	10.072
Sr	40.896	+/-	7.759
Rb	1.000	+/-	23.521
Th	1.000	+/-	597.759
Bi	1.000	+/-	475.122
Au	1.000	+/-	47.799
As	3727.628	+/-	108.196
Se	1.000	+/-	15.363
Pb	12996.552	+/-	183.221
Hg	6032.283	+/-	87.743
Zn	302.358	+/-	27.979
Cu	593.271	+/-	30.586
Ni	1.000	+/-	30.223
Co	1.000	+/-	26.703
Fe	683.906	+/-	65.408
Mn	225.377	+/-	70.864
Cr	1.000	+/-	20.510
V	1.000	+/-	20.543
Ti	1.000	+/-	98.287
Ca	31471.887	+/-	455.355
K	6710.272	+/-	219.057
Al	11528.822	+/-	759.127
P	1010.163	+/-	89.848
Si	11806.542	+/-	409.465
Cl	1872.473	+/-	40.924
S	10202.329	+/-	155.886
Mg	1.000	+/-	5800.809

mRFA -Ergebnisse

XL3t-69288

Reading No 10
Mode Mining
Time 2017-05-08 16:41
Duration 122.24
Units ppm
Sigma Value 2
Sequence Final
Flags 3mm
INV NR Gm142
OBJEKT TAFELGEMAELENDE
MATERIAL HOLZ METALL FASSUNG
ANALYSESTELLE P24 NIMBUS
MESSAUFBAU STATIV ANLIEGEND
FILTER m30lo30hi30li30
User Login Raquet



	ppm	+/-	Error
Ce	1.000	+/-	116.576
La	1.000	+/-	95.042
Ba	1.000	+/-	99.781
Sb	1.000	+/-	57.530
Sn	87.049	+/-	27.059
Cd	1.000	+/-	17.045
Ag	15.997	+/-	9.917
Bal	891934.250	+/-	1107.573
Nb	1.000	+/-	20.968
Zr	1.000	+/-	59.705
Y	1.000	+/-	14.545
Sr	80.649	+/-	6.674
Rb	1.000	+/-	42.145
Th	1.000	+/-	898.884
Bi	1.000	+/-	689.477
Au	739.549	+/-	54.748
As	3066.877	+/-	144.932
Se	1.000	+/-	15.319
Pb	14067.895	+/-	287.401
Hg	1.000	+/-	15.050
Zn	98.488	+/-	33.073
Cu	25296.600	+/-	507.956
Ni	1.000	+/-	35.334
Co	1.000	+/-	41.751
Fe	1176.651	+/-	104.563
Mn	1.000	+/-	103.108
Cr	1.000	+/-	27.807
V	1.000	+/-	20.803
Ti	1.000	+/-	106.728
Ca	28781.982	+/-	568.231
K	4722.381	+/-	254.080
Al	5311.803	+/-	771.686
P	2372.563	+/-	142.892
Si	8873.797	+/-	504.675
Cl	2548.892	+/-	77.100
S	10824.594	+/-	222.637
Mg	1.000	+/-	5934.479

mRFA -Ergebnisse

XL3t-69288

Reading No 11
Mode Mining
Time 2017-05-08 16:45
Duration 121.98
Units ppm
Sigma Value 2
Sequence Final
Flags
INV NR Gm142
OBJEKT TAFELGEMAELENDE
MATERIAL HOLZ METALL FASSUNG
ANALYSESTELLE P25 NIMBUS
MESSAUFBAU STATIV ANLIEGEND
FILTER m30lo30hi30li30
User Login Raquet



	ppm	+/-	Error
Ce	-339.000	+/-	95.801
La	1.000	+/-	43.812
Ba	1.000	+/-	47.010
Sb	1.000	+/-	25.933
Sn	175.164	+/-	12.212
Cd	9.718	+/-	6.281
Ag	21.681	+/-	4.800
Bal	891154.688	+/-	810.862
Nb	26.249	+/-	17.578
Zr	1.000	+/-	60.090
Y	1.000	+/-	14.610
Sr	71.640	+/-	5.006
Rb	32.499	+/-	29.678
Th	1.000	+/-	843.160
Bi	1.000	+/-	676.581
Au	2765.114	+/-	71.515
As	6985.327	+/-	167.144
Se	1.000	+/-	13.438
Pb	24674.787	+/-	364.374
Hg	1.000	+/-	12.985
Zn	150.476	+/-	16.515
Cu	650.657	+/-	32.089
Ni	1.000	+/-	28.838
Co	1.000	+/-	35.596
Fe	2818.312	+/-	112.224
Mn	1.000	+/-	60.953
Cr	64.016	+/-	18.718
V	1.000	+/-	17.696
Ti	126.370	+/-	86.276
Ca	3917.180	+/-	118.007
K	2454.956	+/-	141.361
Al	2230.271	+/-	501.196
P	25261.006	+/-	445.883
Si	11942.591	+/-	460.949
Cl	2104.162	+/-	47.303
S	22363.131	+/-	368.171
Mg	1.000	+/-	5322.397

mRFA -Ergebnisse

XL3t-69288

Reading No 12
Mode Mining
Time 2017-05-08 16:55
Duration 121.61
Units ppm
Sigma Value 2
Sequence Final
Flags
INV NR Gm142
OBJEKT TAFELGEMAELEN
MATERIAL HOLZ METALL FASSUNG
ANALYSESTELLE P26 HUT PRESSBROKAT
MESSAUFBAU STATIV ANLIEGEND
FILTER m30lo30hi30li30
User Login Raquet



	ppm	+/-	Error
Ce	-339.000	+/-	120.773
La	1.000	+/-	55.262
Ba	1.000	+/-	58.794
Sb	1.000	+/-	28.298
Sn	2736.646	+/-	53.845
Cd	43.956	+/-	9.030
Ag	56.880	+/-	7.002
Bal	871594.313	+/-	1102.249
Nb	45.777	+/-	24.953
Zr	1.000	+/-	82.393
Y	1.000	+/-	20.519
Sr	86.475	+/-	6.595
Rb	1.000	+/-	51.906
Th	1.000	+/-	1234.913
Bi	1.000	+/-	890.827
Au	1.000	+/-	27.723
As	7054.699	+/-	211.757
Se	1.000	+/-	13.932
Pb	37755.293	+/-	619.652
Hg	1.000	+/-	15.835
Zn	97.719	+/-	16.697
Cu	7029.400	+/-	152.507
Ni	1.000	+/-	35.765
Co	1.000	+/-	28.545
Fe	560.619	+/-	67.365
Mn	1.000	+/-	107.214
Cr	1.000	+/-	19.819
V	1.000	+/-	15.486
Ti	1.000	+/-	81.309
Ca	36450.246	+/-	624.234
K	2681.791	+/-	181.286
Al	2132.292	+/-	548.264
P	1385.501	+/-	110.393
Si	9392.586	+/-	390.078
Cl	2229.229	+/-	52.696
S	18666.529	+/-	331.808
Mg	1.000	+/-	6941.363