

mRFA -Ergebnisse

XL3t-69288

Reading No 1
Mode Mining
Time 2007-06-01 00:06
Duration 120.01
Units ppm
Sigma Value 2
Sequence Final
Flags 3mm
INV NR Gm115
OBJEKT TAFELGEMAELEN
MATERIAL HOLZ METALL FASSUNG
ANALYSESTELLE P1 GRUNDIERRAND
MESSAUFBAU STATIV
FILTER m30lo30hi30li30
User Login Raquet



	ppm	+/-	Error
Ce	1.000	+/-	140.646
La	1.000	+/-	114.434
Ba	1.000	+/-	120.892
Sb	1.000	+/-	40.219
Sn	35.959	+/-	28.716
Cd	34.519	+/-	17.926
Ag	18.066	+/-	11.799
Bal	731512.250	+/-	2711.296
Nb	1.000	+/-	11.816
Zr	1.000	+/-	44.266
Y	1.000	+/-	11.147
Sr	114.820	+/-	16.965
Rb	1.000	+/-	28.388
Th	1.000	+/-	623.175
Bi	1.000	+/-	518.723
Au	2806.274	+/-	147.271
As	2183.263	+/-	109.081
Se	1.000	+/-	28.869
Pb	5839.178	+/-	139.579
Hg	10751.922	+/-	205.883
Zn	278.169	+/-	59.301
Cu	307.209	+/-	39.695
Ni	1.000	+/-	48.403
Co	1.000	+/-	104.224
Fe	10752.611	+/-	360.619
Mn	140.448	+/-	125.161
Cr	112.352	+/-	38.901
V	1.000	+/-	59.078
Ti	595.017	+/-	191.322
Ca	128412.664	+/-	1759.372
K	3700.202	+/-	265.702
Al	11152.965	+/-	1491.143
P	25948.674	+/-	506.300
Si	40678.066	+/-	1233.909
Cl	3056.598	+/-	92.778
S	21568.883	+/-	336.798
Mg	1.000	+/-	10408.860

mRFA -Ergebnisse

XL3t-69288

Reading No 2
Mode Mining
Time 2007-06-01 00:09
Duration 122.14
Units ppm
Sigma Value 2
Sequence Final
Flags 3mm
INV NR Gm115
OBJEKT TAFELGEMAELEN
MATERIAL HOLZ METALL FASSUNG
ANALYSESTELLE P2 NIMBUS MATTHAEUS
MESSAUFBAU STATIV
FILTER m30lo30hi30li30
User Login Raquet



	ppm	+/-	Error
Ce	1.000	+/-	132.482
La	1.000	+/-	107.823
Ba	1.000	+/-	114.517
Sb	1.000	+/-	40.285
Sn	1.000	+/-	24.318
Cd	1.000	+/-	14.420
Ag	12.201	+/-	10.991
Bal	707808.625	+/-	2760.569
Nb	1.000	+/-	4.569
Zr	1.000	+/-	14.907
Y	1.000	+/-	3.346
Sr	365.690	+/-	13.628
Rb	14.493	+/-	11.045
Th	1.000	+/-	218.278
Bi	1.000	+/-	169.937
Au	4728.940	+/-	134.722
As	48.188	+/-	20.734
Se	1.000	+/-	14.559
Pb	195.119	+/-	19.998
Hg	1.000	+/-	11.622
Zn	73.447	+/-	29.702
Cu	55.428	+/-	25.561
Ni	1.000	+/-	43.975
Co	1.000	+/-	66.573
Fe	3920.439	+/-	213.339
Mn	1.000	+/-	126.239
Cr	133.517	+/-	35.151
V	1.000	+/-	25.137
Ti	1.000	+/-	157.820
Ca	220397.375	+/-	2326.429
K	957.505	+/-	212.306
Al	3985.007	+/-	1287.030
P	37258.504	+/-	548.815
Si	6337.175	+/-	714.595
Cl	1640.682	+/-	68.014
S	12067.668	+/-	187.912
Mg	1.000	+/-	13194.465

mRFA -Ergebnisse

XL3t-69288

Reading No 3
Mode Mining
Time 2007-06-01 00:13
Duration 121.77
Units ppm
Sigma Value 2
Sequence Final
Flags 3mm
INV NR Gm115
OBJEKT TAFELGEMAELENDE
MATERIAL HOLZ METALL FASSUNG
ANALYSESTELLE P3 NIMBUS JOHANNES
MESSAUFBAU STATIV
FILTER m30lo30hi30li30
User Login Raquet

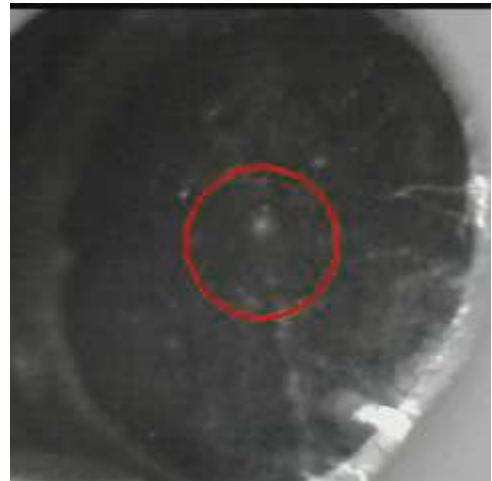


	ppm	+/-	Error
Ce	1.000	+/-	120.175
La	1.000	+/-	99.642
Ba	1.000	+/-	104.307
Sb	1.000	+/-	40.141
Sn	27.262	+/-	25.105
Cd	1.000	+/-	17.372
Ag	1.000	+/-	8.303
Bal	698206.875	+/-	2799.551
Nb	1.000	+/-	6.223
Zr	1.000	+/-	22.881
Y	8.588	+/-	6.354
Sr	400.158	+/-	14.248
Rb	21.435	+/-	13.030
Th	1.000	+/-	319.647
Bi	1.000	+/-	272.227
Au	3802.799	+/-	118.376
As	1.000	+/-	40.612
Se	1.000	+/-	13.917
Pb	1256.713	+/-	48.413
Hg	22.635	+/-	12.075
Zn	90.780	+/-	28.254
Cu	74.831	+/-	26.424
Ni	1.000	+/-	43.798
Co	1.000	+/-	70.932
Fe	4442.485	+/-	224.498
Mn	1.000	+/-	168.366
Cr	73.374	+/-	40.520
V	1.000	+/-	31.838
Ti	185.213	+/-	146.423
Ca	232858.625	+/-	2479.826
K	1474.833	+/-	223.217
Al	5427.136	+/-	1319.679
P	22072.602	+/-	406.949
Si	16310.288	+/-	818.133
Cl	2687.152	+/-	80.464
S	10556.262	+/-	171.368
Mg	1.000	+/-	11341.779

mRFA -Ergebnisse

XL3t-69288

Reading No 4
Mode Mining
Time 2007-06-01 00:18
Duration 121.56
Units ppm
Sigma Value 2
Sequence Final
Flags 3mm
INV NR Gm115
OBJEKT TAFELGEMAELENDE
MATERIAL HOLZ METALL FASSUNG
ANALYSESTELLE P4 GEWAND PHILIPUS
MESSAUFBAU STATIV
FILTER m30lo30hi30li30
User Login Raquet



	ppm	+/-	Error
Ce	1.000	+/-	209.467
La	1.000	+/-	147.282
Ba	1.000	+/-	179.218
Sb	1.000	+/-	57.905
Sn	160.482	+/-	36.553
Cd	1.000	+/-	23.664
Ag	1.000	+/-	9.173
Bal	824490.125	+/-	1883.189
Nb	1.000	+/-	17.810
Zr	1.000	+/-	67.000
Y	1.000	+/-	16.446
Sr	294.313	+/-	13.490
Rb	1.000	+/-	33.797
Th	1.000	+/-	929.515
Bi	1.000	+/-	788.499
Au	1.000	+/-	28.644
As	2517.979	+/-	157.795
Se	1.000	+/-	20.048
Pb	14127.201	+/-	305.471
Hg	1.000	+/-	15.563
Zn	1.000	+/-	42.037
Cu	55927.363	+/-	992.539
Ni	1.000	+/-	42.963
Co	1.000	+/-	49.235
Fe	1672.022	+/-	124.854
Mn	235.883	+/-	108.284
Cr	1.000	+/-	32.086
V	1.000	+/-	41.339
Ti	335.074	+/-	182.389
Ca	42436.805	+/-	739.909
K	3432.748	+/-	236.737
Al	6694.888	+/-	1029.393
P	1973.638	+/-	154.393
Si	30258.404	+/-	979.517
Cl	2760.732	+/-	83.102
S	12682.302	+/-	242.818
Mg	1.000	+/-	13120.349

mRFA -Ergebnisse

XL3t-69288

Reading No 5
Mode Mining
Time 2007-06-01 00:23
Duration 120.04
Units ppm
Sigma Value 2
Sequence Final
Flags 3mm
INV NR Gm115
OBJEKT TAFELGEMAELEN
MATERIAL HOLZ METALL FASSUNG
ANALYSESTELLE P5 GEWAND MATTHAEUS
MESSAUFBAU STATIV
FILTER m30lo30hi30li30
User Login Raquet



	ppm	+/-	Error
Ce	1.000	+/-	165.959
La	1.000	+/-	134.705
Ba	1.000	+/-	142.725
Sb	1.000	+/-	48.313
Sn	124.116	+/-	37.238
Cd	1.000	+/-	16.751
Ag	1.000	+/-	10.251
Bal	871228.438	+/-	1477.321
Nb	1.000	+/-	36.011
Zr	1.000	+/-	78.079
Y	1.000	+/-	19.232
Sr	291.126	+/-	13.869
Rb	1.000	+/-	38.991
Th	1.000	+/-	1073.547
Bi	1.000	+/-	1063.934
Au	1.000	+/-	30.949
As	3997.957	+/-	193.603
Se	19.992	+/-	18.419
Pb	19138.889	+/-	434.205
Hg	1.000	+/-	18.693
Zn	1.000	+/-	32.883
Cu	29465.426	+/-	661.964
Ni	1.000	+/-	43.518
Co	1.000	+/-	74.889
Fe	1495.885	+/-	129.128
Mn	1.000	+/-	177.706
Cr	1.000	+/-	35.684
V	1.000	+/-	28.617
Ti	225.035	+/-	140.178
Ca	30124.379	+/-	661.024
K	3760.990	+/-	255.672
Al	3430.294	+/-	855.935
P	887.871	+/-	155.934
Si	14402.201	+/-	722.235
Cl	1852.760	+/-	75.961
S	19554.656	+/-	427.002
Mg	1.000	+/-	7324.032

mRFA -Ergebnisse

XL3t-69288

Reading No 6
Mode Mining
Time 2007-06-01 00:28
Duration 121.37
Units ppm
Sigma Value 2
Sequence Final
Flags 3mm
INV NR Gm115
OBJEKT TAFELGEMAELENDE
MATERIAL HOLZ METALL FASSUNG
ANALYSESTELLE P6 SCHUESSEL HAND
MESSAUFBAU STATIV
FILTER m30lo30hi30li30
User Login Raquet



	ppm	+/-	Error
Ce	1.000	+/-	145.575
La	1.000	+/-	119.836
Ba	1.000	+/-	126.775
Sb	1.000	+/-	43.930
Sn	39.126	+/-	37.393
Cd	1.000	+/-	15.859
Ag	521.490	+/-	37.412
Bal	842837.438	+/-	1772.443
Nb	1.000	+/-	10.926
Zr	1.000	+/-	42.062
Y	1.000	+/-	9.874
Sr	283.182	+/-	13.004
Rb	1.000	+/-	23.099
Th	1.000	+/-	589.789
Bi	1.000	+/-	534.576
Au	684.457	+/-	56.843
As	1215.492	+/-	100.402
Se	1.000	+/-	13.461
Pb	5036.396	+/-	130.353
Hg	1.000	+/-	15.117
Zn	79.552	+/-	23.368
Cu	1706.790	+/-	90.364
Ni	1.000	+/-	45.033
Co	1.000	+/-	117.233
Fe	12950.393	+/-	435.950
Mn	258.621	+/-	142.831
Cr	57.819	+/-	38.383
V	1.000	+/-	41.326
Ti	239.392	+/-	165.603
Ca	104086.656	+/-	1659.252
K	2771.463	+/-	290.449
Al	1259.847	+/-	871.589
P	1855.158	+/-	174.232
Si	10971.081	+/-	680.249
Cl	1994.887	+/-	80.560
S	11150.724	+/-	226.559
Mg	1.000	+/-	9095.001

mRFA -Ergebnisse

XL3t-69288

Reading No 7
Mode Mining
Time 2007-06-01 00:33
Duration 120.30
Units ppm
Sigma Value 2
Sequence Final
Flags 3mm
INV NR Gm115
OBJEKT TAFELGEMAELEN
MATERIAL HOLZ METALL FASSUNG
ANALYSESTELLE P7 SCHUESSEL WASSER
MESSAUFBAU STATIV
FILTER m30lo30hi30li30
User Login Raquet



	ppm	+/-	Error
Ce	1.000	+/-	180.399
La	1.000	+/-	148.279
Ba	1.000	+/-	155.430
Sb	1.000	+/-	52.377
Sn	1.000	+/-	54.060
Cd	1.000	+/-	19.388
Ag	2092.748	+/-	84.143
Bal	841065.813	+/-	1932.541
Nb	1.000	+/-	11.358
Zr	1.000	+/-	43.582
Y	1.000	+/-	10.169
Sr	403.350	+/-	16.831
Rb	1.000	+/-	25.580
Th	1.000	+/-	607.919
Bi	1.000	+/-	597.616
Au	1919.124	+/-	97.322
As	1386.029	+/-	104.493
Se	1.000	+/-	16.084
Pb	4738.554	+/-	131.523
Hg	143.389	+/-	23.523
Zn	50.281	+/-	34.586
Cu	10761.351	+/-	293.236
Ni	1.000	+/-	52.874
Co	1.000	+/-	75.735
Fe	3549.078	+/-	224.160
Mn	171.850	+/-	144.763
Cr	1.000	+/-	66.670
V	1.000	+/-	45.092
Ti	1.000	+/-	247.856
Ca	80272.391	+/-	1435.501
K	4019.264	+/-	393.332
Al	3179.194	+/-	1134.365
P	4872.219	+/-	258.798
Si	19613.266	+/-	979.433
Cl	6707.282	+/-	173.032
S	15054.846	+/-	312.357
Mg	1.000	+/-	11034.414

mRFA -Ergebnisse

XL3t-69288

Reading No 8
Mode Mining
Time 2007-06-01 00:37
Duration 122.25
Units ppm
Sigma Value 2
Sequence Final
Flags 3mm
INV NR Gm115
OBJEKT TAFELGEMAELEN
MATERIAL HOLZ METALL FASSUNG
ANALYSESTELLE P8 SCHUESSEL SCHWARZZEICHNUNG
MESSAUFBAU STATIV
FILTER m30lo30hi30li30
User Login Raquet



	ppm	+/-	Error
Ce	1.000	+/-	132.797
La	1.000	+/-	108.990
Ba	1.000	+/-	114.078
Sb	1.000	+/-	55.922
Sn	1.000	+/-	40.764
Cd	1.000	+/-	26.552
Ag	776.803	+/-	43.171
Bal	820639.188	+/-	1962.940
Nb	1.000	+/-	8.452
Zr	1.000	+/-	32.113
Y	1.000	+/-	8.045
Sr	344.507	+/-	13.980
Rb	1.000	+/-	19.325
Th	1.000	+/-	449.357
Bi	1.000	+/-	390.572
Au	1058.778	+/-	65.559
As	703.925	+/-	76.821
Se	1.000	+/-	12.317
Pb	3128.083	+/-	89.383
Hg	1.000	+/-	15.510
Zn	51.014	+/-	24.392
Cu	3647.100	+/-	133.156
Ni	1.000	+/-	44.331
Co	1.000	+/-	93.649
Fe	7719.277	+/-	313.900
Mn	1.000	+/-	181.332
Cr	1.000	+/-	46.833
V	1.000	+/-	45.660
Ti	241.678	+/-	159.781
Ca	119941.969	+/-	1706.567
K	2652.007	+/-	291.110
Al	3572.814	+/-	1085.947
P	1516.138	+/-	181.690
Si	16697.504	+/-	819.233
Cl	3165.041	+/-	98.606
S	14144.095	+/-	252.064
Mg	1.000	+/-	18714.717