

mRFA -Ergebnisse

XL3t-69288

Reading No 10
Mode Mining
Time 2019-10-24 11:30
Duration 120.56
Units ppm
Sigma Value 2
Sequence Final
Flags
INV NR Gm1388
OBJEKT TAFELGEMAELEN
MATERIAL HOLZ METALL FASSUNG
ANALYSESTELLE P1 NIMBUS 1
MESSAUFBAU STATIV HOLZPLATTE
FILTER m30lo30hi30li30
User Login Raquet

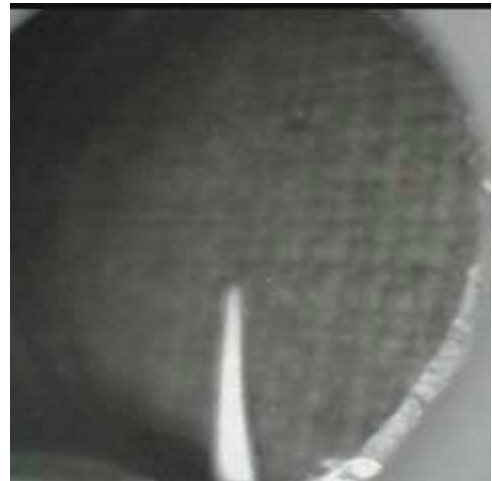


Ele	ppm	+/-	$\pm 2\sigma$
Ce	-339.000	+/-	59.172
La	1.000	+/-	27.199
Ba	1.000	+/-	29.202
Sb	1.000	+/-	12.628
Sn	11.591	+/-	5.900
Cd	17.311	+/-	4.478
Ag	34.613	+/-	3.822
Bal	867510.313	+/-	670.592
Nb	9.980	+/-	2.500
Zr	11.218	+/-	7.305
Y	1.000	+/-	1.879
Sr	30.579	+/-	1.944
Rb	19.124	+/-	4.720
Th	1.000	+/-	102.214
Bi	1.000	+/-	88.243
Au	3744.780	+/-	50.524
As	92.206	+/-	11.846
Se	1.000	+/-	5.956
Pb	262.709	+/-	9.767
Hg	1.000	+/-	5.452
Zn	83.729	+/-	12.566
Cu	318.022	+/-	17.532
Ni	1.000	+/-	19.287
Co	1.000	+/-	49.044
Fe	14520.697	+/-	175.646
Mn	1.000	+/-	45.912
Cr	64.791	+/-	21.571
V	42.561	+/-	21.130
Ti	973.565	+/-	123.694
Ca	14953.619	+/-	196.799
K	4175.874	+/-	169.700
Al	12857.245	+/-	702.148
P	19970.701	+/-	226.432
Si	53543.922	+/-	738.552
Cl	335.707	+/-	18.897
S	6415.114	+/-	74.228
Mg	1.000	+/-	4159.459

mRFA -Ergebnisse

XL3t-69288

Reading No 11
Mode Mining
Time 2019-10-24 11:36
Duration 122.00
Units ppm
Sigma Value 2
Sequence Final
Flags
INV NR Gm1388
OBJEKT TAFELGEMAELEN
MATERIAL HOLZ METALL FASSUNG
ANALYSESTELLE P2 NIMBUS 2
MESSAUFBAU STATIV HOLZPLATTE
FILTER m30lo30hi30li30
User Login Raquet

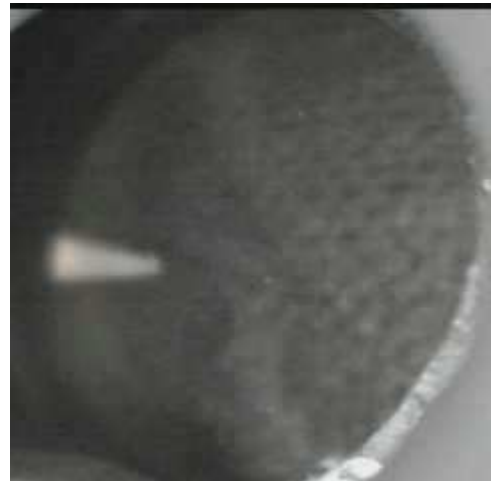


Ele	ppm	+/-	$\pm 2\sigma$
Ce	-339.000	+/-	53.872
La	1.000	+/-	24.590
Ba	1.000	+/-	26.552
Sb	1.000	+/-	15.397
Sn	24.291	+/-	5.583
Cd	15.103	+/-	4.075
Ag	9.982	+/-	2.784
Bal	861149.438	+/-	668.208
Nb	11.049	+/-	2.435
Zr	10.897	+/-	7.421
Y	1.000	+/-	1.345
Sr	26.673	+/-	1.648
Rb	8.154	+/-	3.434
Th	1.000	+/-	106.743
Bi	1.000	+/-	81.451
Au	459.293	+/-	16.219
As	232.834	+/-	16.804
Se	1.000	+/-	2.706
Pb	686.251	+/-	14.201
Hg	1.000	+/-	1.891
Zn	33.435	+/-	7.050
Cu	388.733	+/-	17.646
Ni	1.000	+/-	17.625
Co	1.000	+/-	45.798
Fe	14606.295	+/-	167.823
Mn	1.000	+/-	41.137
Cr	50.177	+/-	21.480
V	44.259	+/-	22.238
Ti	1217.782	+/-	131.422
Ca	14107.182	+/-	188.622
K	4328.329	+/-	168.420
Al	19202.262	+/-	738.477
P	4991.244	+/-	107.112
Si	74448.852	+/-	798.328
Cl	325.114	+/-	16.383
S	3622.288	+/-	49.011
Mg	1.000	+/-	3190.980

mRFA -Ergebnisse

XL3t-69288

Reading No 12
Mode Mining
Time 2019-10-24 11:41
Duration 121.66
Units ppm
Sigma Value 2
Sequence Final
Flags
INV NR Gm1388
OBJEKT TAFELGEMAELEN
MATERIAL HOLZ METALL FASSUNG
ANALYSESTELLE P3 MANTEL MARIA L
MESSAUFBAU STATIV HOLZPLATTE
FILTER m30lo30hi30li30
User Login Raquet

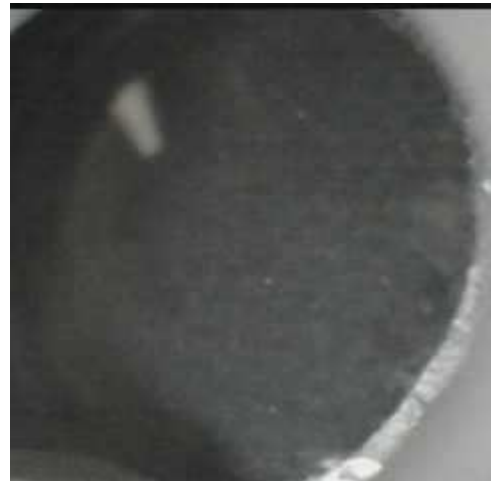


Ele	ppm	+/-	$\pm 2\sigma$
Ce	-339.000	+/-	87.927
La	1.000	+/-	40.379
Ba	1.000	+/-	43.052
Sb	1.000	+/-	23.121
Sn	18.267	+/-	8.204
Cd	7.336	+/-	5.803
Ag	4.699	+/-	3.845
Bal	884385.625	+/-	778.238
Nb	39.211	+/-	13.217
Zr	1.000	+/-	51.096
Y	1.000	+/-	11.046
Sr	22.977	+/-	3.850
Rb	1.000	+/-	21.345
Th	1.000	+/-	658.703
Bi	1.000	+/-	690.718
Au	1.000	+/-	25.120
As	4695.074	+/-	129.212
Se	16.963	+/-	12.116
Pb	18904.889	+/-	268.613
Hg	270.978	+/-	17.982
Zn	130.403	+/-	15.553
Cu	4561.914	+/-	96.424
Ni	1.000	+/-	27.123
Co	1.000	+/-	45.676
Fe	6939.659	+/-	174.539
Mn	1.000	+/-	57.721
Cr	33.561	+/-	19.337
V	1.000	+/-	26.177
Ti	121.709	+/-	94.578
Ca	15512.550	+/-	279.029
K	1467.511	+/-	127.110
Al	5878.598	+/-	618.902
P	4254.232	+/-	145.958
Si	26372.279	+/-	635.502
Cl	1636.419	+/-	38.471
S	24725.244	+/-	374.385
Mg	1.000	+/-	8911.487

mRFA -Ergebnisse

XL3t-69288

Reading No 13
Mode Mining
Time 2019-10-24 11:45
Duration 120.68
Units ppm
Sigma Value 2
Sequence Final
Flags
INV NR Gm1388
OBJEKT TAFELGEMAELEN
MATERIAL HOLZ METALL FASSUNG
ANALYSESTELLE P4 MANTEL MARIA R1
MESSAUFBAU STATIV HOLZPLATTE
FILTER m30lo30hi30li30
User Login Raquet

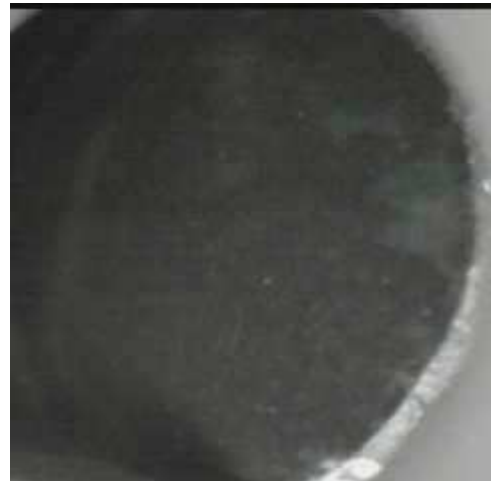


Ele	ppm	+/-	$\pm 2\sigma$
Ce	-339.000	+/-	59.130
La	1.000	+/-	27.220
Ba	1.000	+/-	29.444
Sb	1.000	+/-	16.837
Sn	14.226	+/-	5.861
Cd	14.069	+/-	4.404
Ag	8.142	+/-	2.954
Bal	812418.500	+/-	894.785
Nb	12.444	+/-	3.515
Zr	21.363	+/-	12.190
Y	1.000	+/-	2.509
Sr	32.047	+/-	2.010
Rb	1.000	+/-	5.719
Th	1.000	+/-	174.230
Bi	1.000	+/-	183.071
Au	1.000	+/-	5.779
As	575.754	+/-	30.600
Se	1.000	+/-	3.685
Pb	2044.431	+/-	29.216
Hg	30.039	+/-	4.789
Zn	1.000	+/-	11.353
Cu	12551.896	+/-	127.677
Ni	1.000	+/-	18.747
Co	1.000	+/-	27.148
Fe	3631.779	+/-	87.786
Mn	1.000	+/-	46.283
Cr	1.000	+/-	19.685
V	1.000	+/-	29.130
Ti	2958.141	+/-	169.383
Ca	13420.129	+/-	173.997
K	752.058	+/-	94.668
Al	5692.868	+/-	559.154
P	646.782	+/-	81.512
Si	142430.969	+/-	1305.480
Cl	362.760	+/-	18.999
S	2381.512	+/-	43.680
Mg	1.000	+/-	3919.842

mRFA -Ergebnisse

XL3t-69288

Reading No 14
Mode Mining
Time 2019-10-24 11:49
Duration 120.38
Units ppm
Sigma Value 2
Sequence Final
Flags
INV NR Gm1388
OBJEKT TAFELGEMAELEN
MATERIAL HOLZ METALL FASSUNG
ANALYSESTELLE P5 MANTEL MARIA R2
MESSAUFBAU STATIV HOLZPLATTE
FILTER m30lo30hi30li30
User Login Raquet

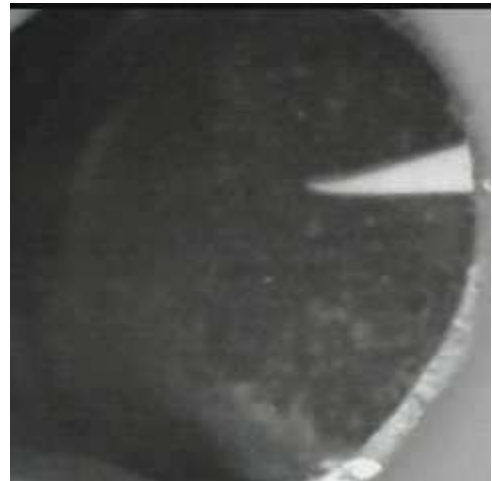


Ele	ppm	+/-	$\pm 2\sigma$
Ce	-339.000	+/-	77.465
La	1.000	+/-	35.684
Ba	1.000	+/-	38.487
Sb	1.000	+/-	13.077
Sn	11.362	+/-	7.441
Cd	9.017	+/-	5.349
Ag	32.859	+/-	4.563
Bal	837190.250	+/-	1011.173
Nb	1.000	+/-	2.507
Zr	9.391	+/-	8.946
Y	1.000	+/-	1.970
Sr	22.908	+/-	2.370
Rb	1.000	+/-	4.818
Th	1.000	+/-	132.120
Bi	1.000	+/-	96.843
Au	40.333	+/-	10.780
As	379.835	+/-	22.754
Se	1.000	+/-	2.803
Pb	429.543	+/-	16.771
Hg	1.000	+/-	3.654
Zn	1.000	+/-	42.383
Cu	82748.203	+/-	591.699
Ni	1.000	+/-	24.600
Co	1.000	+/-	33.992
Fe	4500.899	+/-	100.668
Mn	122.487	+/-	49.466
Cr	1.000	+/-	17.468
V	1.000	+/-	29.286
Ti	724.285	+/-	121.031
Ca	13966.498	+/-	195.502
K	2403.666	+/-	139.605
Al	7699.983	+/-	524.311
P	1535.961	+/-	62.340
Si	45519.898	+/-	581.307
Cl	479.461	+/-	15.827
S	2173.237	+/-	34.387
Mg	1.000	+/-	3451.568

mRFA -Ergebnisse

XL3t-69288

Reading No 16
Mode Mining
Time 2019-10-24 11:55
Duration 121.16
Units ppm
Sigma Value 2
Sequence Final
Flags
INV NR Gm1388
OBJEKT TAFELGEMAELEN
MATERIAL HOLZ METALL FASSUNG
ANALYSESTELLE P6 UNTERGEWAND MARIA
MESSAUFBAU STATIV HOLZPLATTE
FILTER m30lo30hi30li30
User Login Raquet



Ele	ppm	+/-	$\pm 2\sigma$
Ce	-339.000	+/-	63.613
La	1.000	+/-	29.076
Ba	1.000	+/-	31.392
Sb	1.000	+/-	13.378
Sn	10.555	+/-	6.115
Cd	10.813	+/-	4.545
Ag	7.376	+/-	3.068
Bal	875475.188	+/-	683.546
Nb	8.279	+/-	3.420
Zr	11.841	+/-	11.412
Y	1.000	+/-	2.356
Sr	35.932	+/-	2.273
Rb	1.000	+/-	4.398
Th	1.000	+/-	162.651
Bi	1.000	+/-	163.324
Au	1.000	+/-	5.946
As	345.910	+/-	27.397
Se	1.000	+/-	3.308
Pb	1350.923	+/-	25.041
Hg	9.500	+/-	4.029
Zn	1.000	+/-	18.904
Cu	39322.352	+/-	300.723
Ni	1.000	+/-	19.846
Co	1.000	+/-	25.524
Fe	2725.705	+/-	75.926
Mn	53.080	+/-	44.770
Cr	1.000	+/-	15.720
V	20.373	+/-	14.876
Ti	324.825	+/-	82.592
Ca	29021.605	+/-	279.437
K	1733.479	+/-	113.498
Al	12998.835	+/-	697.893
P	1253.301	+/-	77.282
Si	27270.109	+/-	505.519
Cl	561.589	+/-	19.364
S	7448.344	+/-	79.783
Mg	1.000	+/-	4079.545

mRFA -Ergebnisse

XL3t-69288

Reading No 17
Mode Mining
Time 2019-10-24 11:59
Duration 121.29
Units ppm
Sigma Value 2
Sequence Final
Flags
INV NR Gm1388
OBJEKT TAFELGEMAELEN
MATERIAL HOLZ METALL FASSUNG
ANALYSESTELLE P7 GEWAND ENGEL
MESSAUFBAU STATIV HOLZPLATTE
FILTER m30lo30hi30li30
User Login Raquet

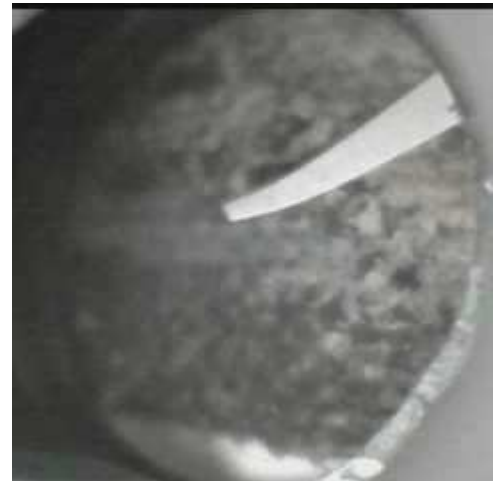


Ele	ppm	+/-	$\pm 2\sigma$
Ce	-339.000	+/-	59.273
La	1.000	+/-	27.315
Ba	1.000	+/-	29.441
Sb	15.633	+/-	10.989
Sn	11.449	+/-	5.771
Cd	13.570	+/-	4.364
Ag	6.699	+/-	2.880
Bal	878543.188	+/-	587.662
Nb	16.155	+/-	4.540
Zr	1.000	+/-	21.993
Y	1.000	+/-	3.425
Sr	52.649	+/-	2.375
Rb	1.000	+/-	8.732
Th	1.000	+/-	236.787
Bi	1.000	+/-	242.052
Au	1.000	+/-	6.175
As	1109.944	+/-	42.025
Se	1.000	+/-	5.716
Pb	4003.657	+/-	46.342
Hg	1.000	+/-	3.246
Zn	19.460	+/-	8.285
Cu	4192.010	+/-	62.771
Ni	1.000	+/-	18.133
Co	1.000	+/-	15.816
Fe	409.017	+/-	39.372
Mn	1.000	+/-	40.089
Cr	1.000	+/-	15.373
V	1.000	+/-	12.239
Ti	1.000	+/-	77.030
Ca	88421.391	+/-	682.104
K	605.797	+/-	98.720
Al	3169.305	+/-	585.820
P	990.291	+/-	94.634
Si	10684.041	+/-	408.421
Cl	768.052	+/-	26.409
S	6967.717	+/-	91.837
Mg	1.000	+/-	4761.456

mRFA -Ergebnisse

XL3t-69288

Reading No 18
Mode Mining
Time 2019-10-24 12:03
Duration 120.90
Units ppm
Sigma Value 2
Sequence Final
Flags
INV NR Gm1388
OBJEKT TAFELGEMAELEN
MATERIAL HOLZ METALL FASSUNG
ANALYSESTELLE P8 RAND
MESSAUFBAU STATIV HOLZPLATTE
FILTER m30lo30hi30li30
User Login Raquet



Ele	ppm	+/-	$\pm 2\sigma$
Ce	-339.000	+/-	57.967
La	1.000	+/-	26.467
Ba	1.000	+/-	28.945
Sb	1.000	+/-	16.362
Sn	12.132	+/-	5.666
Cd	16.943	+/-	4.363
Ag	9.280	+/-	2.920
Bal	875902.938	+/-	619.292
Nb	13.679	+/-	3.920
Zr	14.516	+/-	13.811
Y	1.000	+/-	2.921
Sr	39.538	+/-	2.175
Rb	1.000	+/-	7.351
Th	1.000	+/-	197.827
Bi	1.000	+/-	197.284
Au	1.000	+/-	5.353
As	744.161	+/-	35.311
Se	1.000	+/-	4.146
Pb	2637.196	+/-	34.974
Hg	1.000	+/-	2.837
Zn	1.000	+/-	12.516
Cu	18299.762	+/-	169.660
Ni	1.000	+/-	18.617
Co	1.000	+/-	26.173
Fe	3374.068	+/-	84.090
Mn	1.000	+/-	42.375
Cr	1.000	+/-	17.088
V	1.000	+/-	14.711
Ti	150.401	+/-	80.390
Ca	64838.223	+/-	504.481
K	1365.151	+/-	116.475
Al	4925.649	+/-	650.290
P	908.353	+/-	90.528
Si	21237.357	+/-	558.784
Cl	625.879	+/-	25.111
S	4884.810	+/-	73.968
Mg	1.000	+/-	4932.765

mRFA -Ergebnisse

XL3t-69288

Reading No 19
Mode Mining
Time 2019-10-24 12:09
Duration 121.65
Units ppm
Sigma Value 2
Sequence Final
Flags
INV NR Gm1388
OBJEKT TAFELGEMAELEN
MATERIAL HOLZ METALL FASSUNG
ANALYSESTELLE P9 TUERKIS
MESSAUFBAU STATIV HOLZPLATTE
FILTER m30lo30hi30li30
User Login Raquet

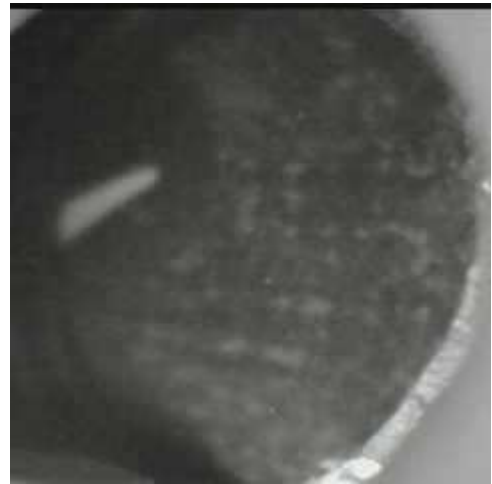


Ele	ppm	+/-	$\pm 2\sigma$
Ce	-339.000	+/-	58.379
La	1.000	+/-	26.818
Ba	1.000	+/-	29.637
Sb	1.000	+/-	15.407
Sn	13.351	+/-	5.768
Cd	15.151	+/-	4.374
Ag	7.661	+/-	2.896
Bal	910801.063	+/-	469.844
Nb	9.594	+/-	3.031
Zr	10.173	+/-	9.857
Y	1.000	+/-	1.955
Sr	36.131	+/-	2.079
Rb	1.000	+/-	5.091
Th	1.000	+/-	140.139
Bi	1.000	+/-	126.179
Au	1.000	+/-	4.821
As	310.755	+/-	23.575
Se	1.000	+/-	2.860
Pb	1137.314	+/-	21.062
Hg	1.000	+/-	2.081
Zn	1.000	+/-	15.205
Cu	27232.324	+/-	210.663
Ni	1.000	+/-	18.932
Co	1.000	+/-	24.624
Fe	3107.547	+/-	78.532
Mn	1.000	+/-	42.115
Cr	1.000	+/-	15.795
V	24.033	+/-	13.464
Ti	213.109	+/-	73.414
Ca	36353.109	+/-	309.014
K	605.114	+/-	89.131
Al	2649.102	+/-	423.584
P	664.328	+/-	60.085
Si	9878.167	+/-	320.481
Cl	431.012	+/-	18.620
S	2370.763	+/-	41.422
Mg	4130.184	+/-	4021.657

mRFA -Ergebnisse

XL3t-69288

Reading No 20
Mode Mining
Time 2019-10-24 12:14
Duration 120.29
Units ppm
Sigma Value 2
Sequence Final
Flags
INV NR Gm1388
OBJEKT TAFELGEMAELEN
MATERIAL HOLZ METALL FASSUNG
ANALYSESTELLE P10 FLUEGEL L
MESSAUFBAU STATIV HOLZPLATTE
FILTER m30lo30hi30li30
User Login Raquet



Ele	ppm	+/-	$\pm 2\sigma$
Ce	-339.000	+/-	66.664
La	1.000	+/-	30.572
Ba	1.000	+/-	33.198
Sb	1.000	+/-	17.548
Sn	41.535	+/-	6.997
Cd	12.542	+/-	4.764
Ag	6.690	+/-	3.152
Bal	862527.688	+/-	803.034
Nb	5.253	+/-	3.090
Zr	1.000	+/-	11.652
Y	1.000	+/-	1.922
Sr	23.775	+/-	2.155
Rb	1.000	+/-	4.887
Th	1.000	+/-	129.784
Bi	1.000	+/-	104.724
Au	1.000	+/-	10.384
As	1800.148	+/-	36.204
Se	1.000	+/-	2.770
Pb	627.044	+/-	18.396
Hg	1.000	+/-	5.934
Zn	242.059	+/-	28.343
Cu	58990.465	+/-	413.247
Ni	1.000	+/-	22.847
Co	1.000	+/-	21.292
Fe	1020.461	+/-	52.029
Mn	1.000	+/-	41.042
Cr	1.000	+/-	15.197
V	1.000	+/-	24.734
Ti	171.854	+/-	83.335
Ca	13096.633	+/-	178.270
K	2395.932	+/-	127.143
Al	7765.236	+/-	517.648
P	5973.945	+/-	105.631
Si	42374.555	+/-	578.036
Cl	423.220	+/-	15.530
S	2501.056	+/-	38.280
Mg	1.000	+/-	3392.389

mRFA -Ergebnisse

XL3t-69288

Reading No 21
Mode Mining
Time 2019-10-24 12:19
Duration 121.91
Units ppm
Sigma Value 2
Sequence Final
Flags
INV NR Gm1388
OBJEKT TAFELGEMAELENDE
MATERIAL HOLZ METALL FASSUNG
ANALYSESTELLE P11 FLUEGEL L2
MESSAUFBAU STATIV HOLZPLATTE
FILTER m30lo30hi30li30
User Login Raquet

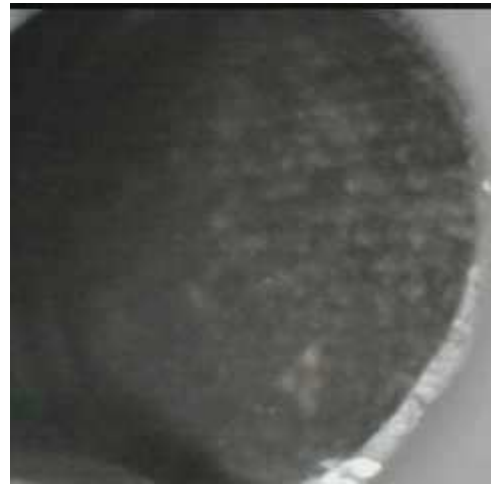


Ele	ppm	+/-	$\pm 2\sigma$
Ce	-339.000	+/-	64.171
La	1.000	+/-	29.521
Ba	1.000	+/-	40.073
Sb	16.041	+/-	11.772
Sn	27.613	+/-	6.549
Cd	15.480	+/-	4.717
Ag	9.046	+/-	3.169
Bal	893689.250	+/-	597.398
Nb	8.680	+/-	2.784
Zr	1.000	+/-	12.345
Y	1.000	+/-	1.552
Sr	28.826	+/-	2.126
Rb	1.000	+/-	4.891
Th	1.000	+/-	110.015
Bi	1.000	+/-	100.874
Au	1.000	+/-	8.313
As	1344.371	+/-	28.578
Se	1.000	+/-	2.329
Pb	441.297	+/-	14.367
Hg	1.000	+/-	4.690
Zn	177.605	+/-	24.499
Cu	48471.418	+/-	333.258
Ni	1.000	+/-	20.779
Co	1.000	+/-	18.939
Fe	741.234	+/-	45.252
Mn	1.000	+/-	39.365
Cr	1.000	+/-	16.107
V	1.000	+/-	23.443
Ti	116.413	+/-	79.737
Ca	14204.980	+/-	178.614
K	1182.921	+/-	102.406
Al	4062.540	+/-	396.573
P	6877.680	+/-	107.314
Si	26526.783	+/-	442.187
Cl	371.695	+/-	14.940
S	1686.127	+/-	30.354
Mg	1.000	+/-	3117.625

mRFA -Ergebnisse

XL3t-69288

Reading No 22
Mode Mining
Time 2019-10-24 12:24
Duration 120.60
Units ppm
Sigma Value 2
Sequence Final
Flags
INV NR Gm1388
OBJEKT TAFELGEMAELEN
MATERIAL HOLZ METALL FASSUNG
ANALYSESTELLE P12 FLUEGEL L3
MESSAUFBAU STATIV HOLZPLATTE
FILTER m30lo30hi30li30
User Login Raquet

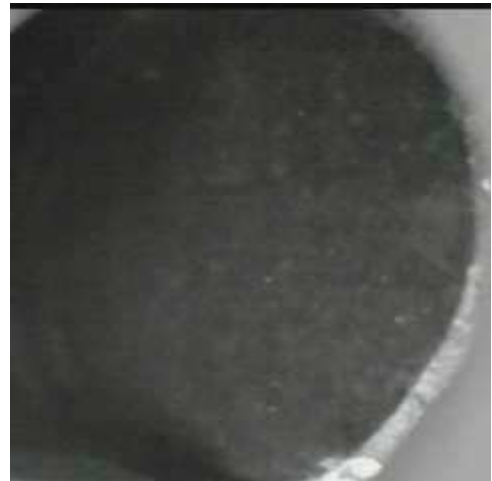


Ele	ppm	+/-	$\pm 2\sigma$
Ce	-339.000	+/-	61.830
La	1.000	+/-	28.385
Ba	1.000	+/-	31.481
Sb	64.475	+/-	12.227
Sn	24.593	+/-	6.330
Cd	16.135	+/-	4.614
Ag	11.469	+/-	3.177
Bal	901347.500	+/-	543.197
Nb	12.338	+/-	4.351
Zr	16.433	+/-	15.498
Y	1.000	+/-	3.232
Sr	28.937	+/-	2.116
Rb	1.000	+/-	7.059
Th	1.000	+/-	222.081
Bi	1.000	+/-	249.449
Au	1.000	+/-	6.559
As	932.510	+/-	39.627
Se	1.000	+/-	4.414
Pb	2741.125	+/-	38.980
Hg	1.000	+/-	3.459
Zn	1.000	+/-	17.488
Cu	33042.270	+/-	288.907
Ni	1.000	+/-	19.934
Co	1.000	+/-	22.043
Fe	1610.854	+/-	61.100
Mn	1.000	+/-	40.361
Cr	1.000	+/-	16.838
V	1.000	+/-	14.889
Ti	212.777	+/-	81.791
Ca	16935.531	+/-	213.506
K	1435.636	+/-	111.261
Al	5614.892	+/-	488.122
P	1721.270	+/-	79.484
Si	25368.846	+/-	484.578
Cl	862.160	+/-	21.715
S	8000.229	+/-	88.472
Mg	1.000	+/-	4690.590

mRFA -Ergebnisse

XL3t-69288

Reading No 23
Mode Mining
Time 2019-10-24 12:30
Duration 120.67
Units ppm
Sigma Value 2
Sequence Final
Flags
INV NR Gm1388
OBJEKT TAFELGEMAELEN
MATERIAL HOLZ METALL FASSUNG
ANALYSESTELLE P13 FLUEGEL R1
MESSAUFBAU STATIV HOLZPLATTE
FILTER m30lo30hi30li30
User Login Raquet

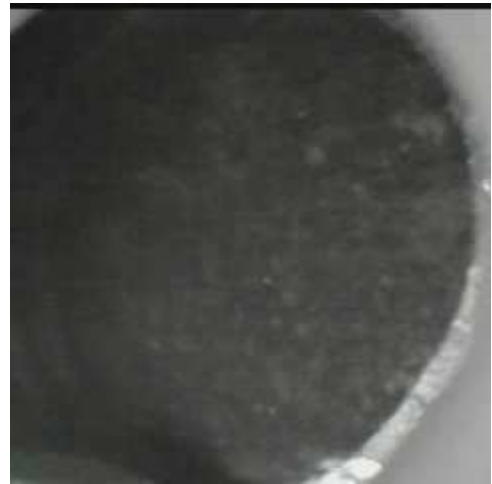


Ele	ppm	+/-	$\pm 2\sigma$
Ce	-339.000	+/-	63.894
La	1.000	+/-	29.349
Ba	1.000	+/-	32.135
Sb	80.480	+/-	12.748
Sn	15.828	+/-	6.305
Cd	16.439	+/-	4.721
Ag	16.735	+/-	3.431
Bal	879050.000	+/-	683.665
Nb	7.933	+/-	3.559
Zr	1.000	+/-	17.038
Y	1.000	+/-	2.437
Sr	24.845	+/-	2.109
Rb	1.000	+/-	7.224
Th	1.000	+/-	167.050
Bi	1.000	+/-	136.065
Au	1.000	+/-	6.647
As	689.777	+/-	30.266
Se	1.000	+/-	3.421
Pb	1215.311	+/-	24.920
Hg	1.000	+/-	3.667
Zn	1.000	+/-	22.144
Cu	50346.184	+/-	366.882
Ni	1.000	+/-	20.713
Co	1.000	+/-	24.467
Fe	2254.559	+/-	70.376
Mn	1.000	+/-	40.527
Cr	1.000	+/-	16.137
V	1.000	+/-	18.631
Ti	233.880	+/-	90.945
Ca	14962.286	+/-	193.319
K	2186.322	+/-	124.765
Al	7293.884	+/-	495.049
P	1791.609	+/-	68.102
Si	35879.703	+/-	526.456
Cl	436.652	+/-	16.045
S	3497.612	+/-	46.073
Mg	1.000	+/-	3343.914

mRFA -Ergebnisse

XL3t-69288

Reading No 24
Mode Mining
Time 2019-10-24 12:33
Duration 121.98
Units ppm
Sigma Value 2
Sequence Final
Flags
INV NR Gm1388
OBJEKT TAFELGEMAELEN
MATERIAL HOLZ METALL FASSUNG
ANALYSESTELLE P14 FLUEGEL R2
MESSAUFBAU STATIV HOLZPLATTE
FILTER m30lo30hi30li30
User Login Raquet



Ele	ppm	+/-	$\pm 2\sigma$
Ce	-339.000	+/-	58.923
La	1.000	+/-	27.024
Ba	1.000	+/-	29.599
Sb	1.000	+/-	16.789
Sn	9.005	+/-	5.710
Cd	10.838	+/-	4.269
Ag	10.411	+/-	3.000
Bal	881960.500	+/-	638.088
Nb	7.845	+/-	2.433
Zr	1.000	+/-	9.460
Y	2.035	+/-	1.889
Sr	26.325	+/-	1.949
Rb	3.726	+/-	2.817
Th	1.000	+/-	86.699
Bi	1.000	+/-	70.927
Au	1.000	+/-	7.519
As	1110.679	+/-	23.561
Se	1.000	+/-	1.881
Pb	273.670	+/-	10.778
Hg	1.000	+/-	4.198
Zn	149.484	+/-	21.678
Cu	39682.137	+/-	270.098
Ni	1.000	+/-	19.730
Co	1.000	+/-	18.442
Fe	1078.310	+/-	50.749
Mn	1.000	+/-	38.777
Cr	1.000	+/-	15.097
V	1.000	+/-	16.415
Ti	108.893	+/-	77.010
Ca	15798.336	+/-	184.290
K	2855.500	+/-	127.215
Al	7919.397	+/-	521.460
P	4770.449	+/-	98.526
Si	41276.785	+/-	579.131
Cl	380.932	+/-	15.907
S	2564.702	+/-	39.571
Mg	1.000	+/-	3268.237

mRFA -Ergebnisse

XL3t-69288

Reading No 25
Mode Mining
Time 2019-10-24 12:38
Duration 120.77
Units ppm
Sigma Value 2
Sequence Final
Flags
INV NR Gm1388
OBJEKT TAFELGEMAELEN
MATERIAL HOLZ METALL FASSUNG
ANALYSESTELLE P15 HINTERGRUND R
MESSAUFBAU STATIV HOLZPLATTE
FILTER m30lo30hi30li30
User Login Raquet

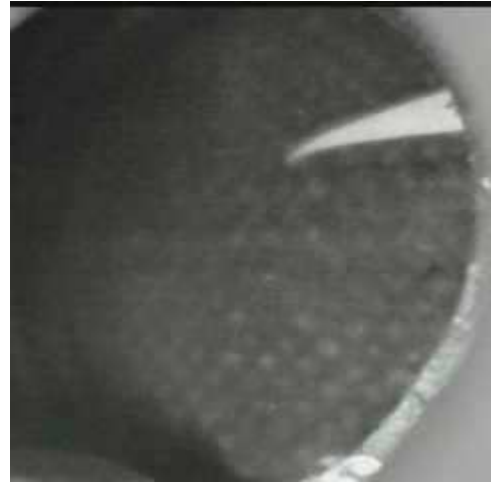


Ele	ppm	+/-	$\pm 2\sigma$
Ce	-339.000	+/-	65.939
La	1.000	+/-	30.234
Ba	1.000	+/-	32.498
Sb	1.000	+/-	18.047
Sn	1.000	+/-	7.042
Cd	15.579	+/-	4.889
Ag	6.577	+/-	3.182
Bal	884141.875	+/-	607.173
Nb	11.689	+/-	3.717
Zr	1.000	+/-	19.332
Y	1.000	+/-	2.670
Sr	34.245	+/-	2.130
Rb	1.000	+/-	7.091
Th	1.000	+/-	183.417
Bi	1.000	+/-	165.992
Au	1.000	+/-	5.479
As	559.239	+/-	32.099
Se	1.000	+/-	3.771
Pb	2012.779	+/-	30.422
Hg	1.000	+/-	2.542
Zn	1.000	+/-	14.873
Cu	25154.908	+/-	214.381
Ni	1.000	+/-	19.575
Co	1.000	+/-	22.269
Fe	1835.593	+/-	64.948
Mn	1.000	+/-	43.295
Cr	1.000	+/-	17.103
V	1.000	+/-	23.697
Ti	176.157	+/-	81.735
Ca	52265.535	+/-	423.248
K	1422.113	+/-	115.422
Al	6074.134	+/-	612.761
P	1429.548	+/-	85.349
Si	19572.662	+/-	478.078
Cl	602.637	+/-	22.621
S	4684.784	+/-	65.085
Mg	1.000	+/-	6906.496

mRFA -Ergebnisse

XL3t-69288

Reading No 26
Mode Mining
Time 2019-10-24 12:42
Duration 120.04
Units ppm
Sigma Value 2
Sequence Final
Flags
INV NR Gm1388
OBJEKT TAFELGEMAELEN
MATERIAL HOLZ METALL FASSUNG
ANALYSESTELLE P16 MANDORLA
MESSAUFBAU STATIV HOLZPLATTE
FILTER m30lo30hi30li30
User Login Raquet

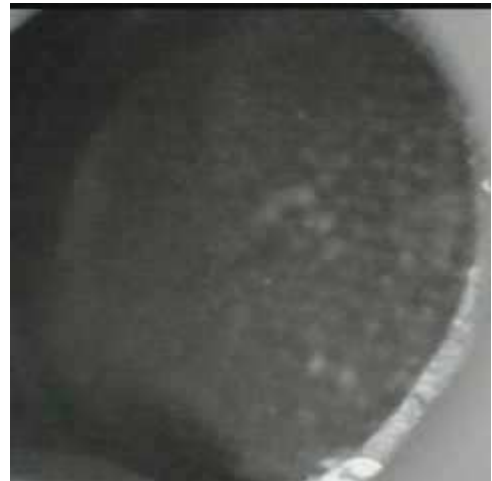


Ele	ppm	+/-	$\pm 2\sigma$
Ce	-339.000	+/-	55.507
La	1.000	+/-	25.402
Ba	1.000	+/-	27.593
Sb	11.519	+/-	10.421
Sn	1.000	+/-	9.686
Cd	20.180	+/-	4.367
Ag	268.790	+/-	8.043
Bal	852974.750	+/-	702.063
Nb	11.905	+/-	2.107
Zr	13.351	+/-	5.567
Y	4.314	+/-	1.640
Sr	29.866	+/-	1.691
Rb	7.200	+/-	2.641
Th	1.000	+/-	76.994
Bi	1.000	+/-	70.100
Au	259.706	+/-	12.363
As	91.268	+/-	10.840
Se	1.000	+/-	2.017
Pb	272.337	+/-	8.921
Hg	9.705	+/-	2.502
Zn	53.889	+/-	7.387
Cu	318.415	+/-	16.420
Ni	1.000	+/-	18.130
Co	1.000	+/-	45.634
Fe	14693.246	+/-	165.408
Mn	1.000	+/-	40.594
Cr	39.062	+/-	21.884
V	45.377	+/-	22.066
Ti	1112.477	+/-	129.520
Ca	17917.408	+/-	213.732
K	5349.188	+/-	206.593
Al	19641.824	+/-	852.014
P	4863.142	+/-	120.541
Si	75420.781	+/-	860.674
Cl	906.717	+/-	24.974
S	5663.561	+/-	68.276
Mg	1.000	+/-	3808.041

mRFA -Ergebnisse

XL3t-69288

Reading No 27
Mode Mining
Time 2019-10-24 12:53
Duration 122.25
Units ppm
Sigma Value 2
Sequence Final
Flags
INV NR Gm1388
OBJEKT TAFELGEMAELEN
MATERIAL HOLZ METALL FASSUNG
ANALYSESTELLE P17 MANDORLA
MESSAUFBAU STATIV HOLZPLATTE
FILTER m30lo30hi30li30
User Login Raquet

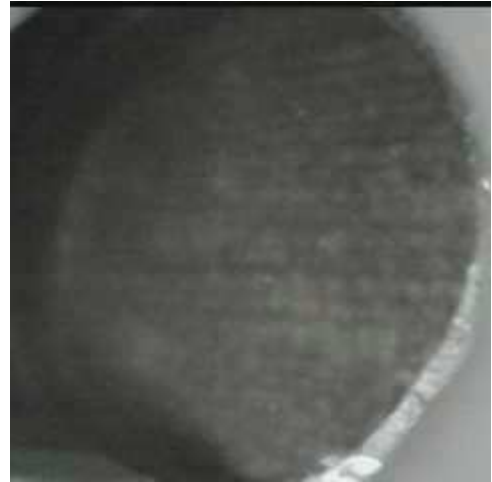


Ele	ppm	+/-	$\pm 2\sigma$
Ce	-339.000	+/-	57.264
La	1.000	+/-	26.376
Ba	1.000	+/-	28.580
Sb	12.823	+/-	10.787
Sn	1.000	+/-	9.836
Cd	20.636	+/-	4.510
Ag	278.392	+/-	8.342
Bal	870578.625	+/-	632.167
Nb	11.467	+/-	2.092
Zr	14.092	+/-	5.431
Y	2.059	+/-	1.590
Sr	28.470	+/-	1.687
Rb	7.035	+/-	2.628
Th	1.000	+/-	74.852
Bi	1.000	+/-	72.096
Au	316.631	+/-	13.668
As	83.911	+/-	10.594
Se	1.000	+/-	2.051
Pb	252.506	+/-	8.716
Hg	11.418	+/-	2.615
Zn	100.871	+/-	9.007
Cu	700.248	+/-	22.617
Ni	1.000	+/-	18.099
Co	1.000	+/-	46.739
Fe	14945.978	+/-	168.575
Mn	1.000	+/-	42.793
Cr	61.043	+/-	21.187
V	52.914	+/-	25.397
Ti	1185.761	+/-	145.498
Ca	16541.186	+/-	206.694
K	4865.191	+/-	203.056
Al	16337.821	+/-	756.178
P	4682.390	+/-	113.463
Si	62101.215	+/-	759.931
Cl	987.301	+/-	24.815
S	5820.058	+/-	67.396
Mg	1.000	+/-	3939.823

mRFA -Ergebnisse

XL3t-69288

Reading No 28
Mode Mining
Time 2019-10-24 12:59
Duration 121.71
Units ppm
Sigma Value 2
Sequence Final
Flags
INV NR Gm1388
OBJEKT TAFELGEMAELEN
MATERIAL HOLZ METALL FASSUNG
ANALYSESTELLE P18 MANDORLA 3
MESSAUFBAU STATIV HOLZPLATTE
FILTER m30lo30hi30li30
User Login Raquet

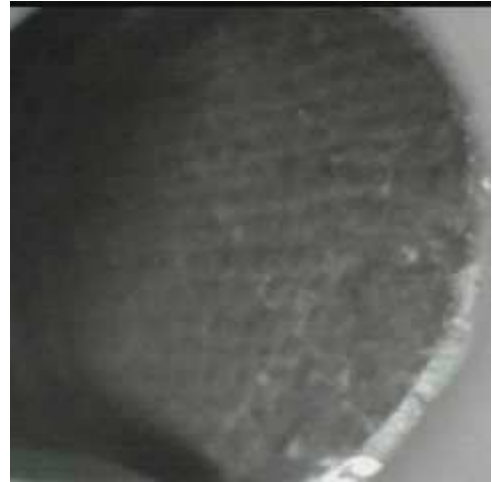


Ele	ppm	+/-	$\pm 2\sigma$
Ce	-339.000	+/-	56.968
La	1.000	+/-	26.059
Ba	1.000	+/-	28.265
Sb	16.112	+/-	10.715
Sn	7.854	+/-	6.525
Cd	19.170	+/-	4.438
Ag	246.187	+/-	7.906
Bal	865405.375	+/-	661.174
Nb	10.529	+/-	2.129
Zr	11.385	+/-	5.684
Y	1.000	+/-	1.897
Sr	30.775	+/-	1.741
Rb	6.979	+/-	2.729
Th	1.000	+/-	78.726
Bi	1.000	+/-	63.113
Au	356.918	+/-	14.491
As	99.373	+/-	11.454
Se	1.000	+/-	2.189
Pb	299.144	+/-	9.455
Hg	13.916	+/-	2.790
Zn	30.288	+/-	6.940
Cu	302.731	+/-	16.415
Ni	1.000	+/-	18.360
Co	1.000	+/-	45.131
Fe	13744.456	+/-	161.824
Mn	1.000	+/-	41.224
Cr	52.843	+/-	21.309
V	49.279	+/-	23.005
Ti	1123.667	+/-	133.529
Ca	14220.799	+/-	188.995
K	4624.511	+/-	201.137
Al	17730.625	+/-	790.393
P	7598.667	+/-	138.556
Si	67295.305	+/-	798.762
Cl	572.575	+/-	22.015
S	6130.622	+/-	70.186
Mg	1.000	+/-	3914.672

mRFA -Ergebnisse

XL3t-69288

Reading No 29
Mode Mining
Time 2019-10-24 13:04
Duration 121.31
Units ppm
Sigma Value 2
Sequence Final
Flags
INV NR Gm1388
OBJEKT TAFELGEMAELEN
MATERIAL HOLZ METALL FASSUNG
ANALYSESTELLE P19 MANDORLA 4
MESSAUFBAU STATIV HOLZPLATTE
FILTER m30lo30hi30li30
User Login Raquet



Ele	ppm	+/-	$\pm 2\sigma$
Ce	-339.000	+/-	52.572
La	1.000	+/-	24.130
Ba	1.000	+/-	25.992
Sb	13.255	+/-	9.789
Sn	1.000	+/-	6.241
Cd	15.371	+/-	3.970
Ag	280.318	+/-	7.685
Bal	853513.313	+/-	710.964
Nb	11.274	+/-	2.745
Zr	10.049	+/-	8.806
Y	1.000	+/-	1.676
Sr	25.368	+/-	1.716
Rb	7.424	+/-	4.030
Th	1.000	+/-	125.039
Bi	1.000	+/-	102.134
Au	533.935	+/-	18.225
As	318.307	+/-	20.862
Se	1.000	+/-	3.147
Pb	1026.611	+/-	18.234
Hg	6.967	+/-	3.556
Zn	33.055	+/-	9.396
Cu	4486.601	+/-	59.201
Ni	1.000	+/-	18.475
Co	1.000	+/-	44.746
Fe	13140.310	+/-	161.792
Mn	1.000	+/-	41.043
Cr	50.594	+/-	18.174
V	53.865	+/-	20.256
Ti	1007.957	+/-	118.924
Ca	24035.021	+/-	249.008
K	3753.306	+/-	176.887
Al	16844.150	+/-	855.462
P	8689.147	+/-	156.664
Si	62442.293	+/-	815.286
Cl	1666.249	+/-	31.317
S	8035.197	+/-	87.522
Mg	1.000	+/-	5432.449

mRFA -Ergebnisse

XL3t-69288

Reading No 30
Mode Mining
Time 2019-10-24 13:08
Duration 121.12
Units ppm
Sigma Value 2
Sequence Final
Flags
INV NR Gm1388
OBJEKT TAFELGEMAELEN
MATERIAL HOLZ METALL FASSUNG
ANALYSESTELLE P20 HINTERGRUND U
MESSAUFBAU STATIV HOLZPLATTE
FILTER m30lo30hi30li30
User Login Raquet

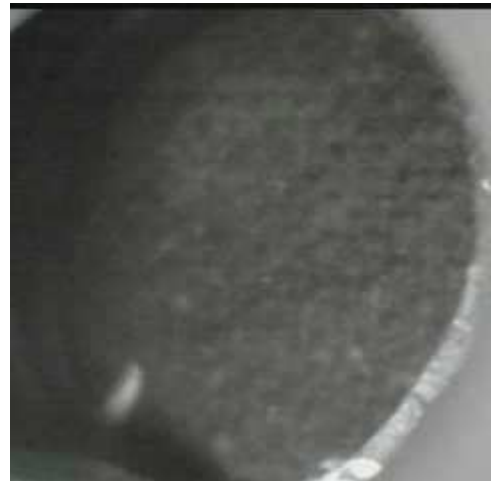


Ele	ppm	+/-	$\pm 2\sigma$
Ce	-339.000	+/-	54.890
La	1.000	+/-	25.052
Ba	1.000	+/-	27.128
Sb	1.000	+/-	10.231
Sn	10.684	+/-	5.407
Cd	15.832	+/-	4.152
Ag	12.233	+/-	2.898
Bal	908907.063	+/-	438.293
Nb	12.280	+/-	3.124
Zr	1.000	+/-	14.540
Y	1.000	+/-	2.091
Sr	34.459	+/-	1.842
Rb	1.000	+/-	5.884
Th	1.000	+/-	152.809
Bi	1.000	+/-	131.490
Au	1.000	+/-	4.556
As	562.549	+/-	27.144
Se	1.000	+/-	3.080
Pb	1843.854	+/-	25.133
Hg	1.000	+/-	2.068
Zn	1.000	+/-	6.411
Cu	3246.576	+/-	48.934
Ni	1.000	+/-	17.248
Co	1.000	+/-	14.381
Fe	441.301	+/-	38.305
Mn	1.000	+/-	38.593
Cr	1.000	+/-	14.488
V	1.000	+/-	10.600
Ti	71.892	+/-	57.551
Ca	62780.805	+/-	457.252
K	396.771	+/-	84.553
Al	6032.781	+/-	646.109
P	324.751	+/-	83.435
Si	7983.696	+/-	365.037
Cl	743.287	+/-	26.347
S	6579.201	+/-	86.613
Mg	1.000	+/-	4516.520

mRFA -Ergebnisse

XL3t-69288

Reading No 31
Mode Mining
Time 2019-10-24 13:12
Duration 120.49
Units ppm
Sigma Value 2
Sequence Final
Flags
INV NR Gm1388
OBJEKT TAFELGEMAELEN
MATERIAL HOLZ METALL FASSUNG
ANALYSESTELLE P21 KONTUR
MESSAUFBAU STATIV HOLZPLATTE
FILTER m30lo30hi30li30
User Login Raquet

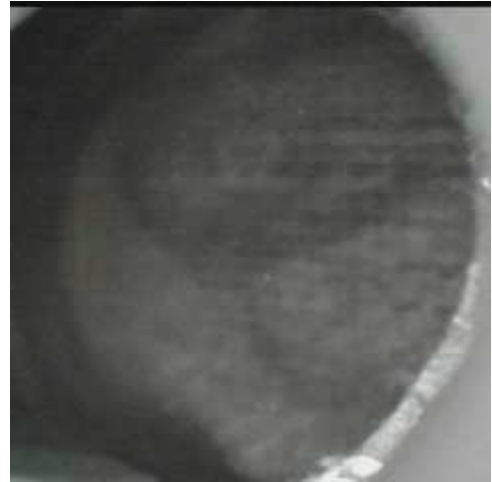


Ele	ppm	+/-	$\pm 2\sigma$
Ce	-339.000	+/-	53.301
La	1.000	+/-	24.574
Ba	1.000	+/-	26.810
Sb	1.000	+/-	11.431
Sn	1.000	+/-	5.304
Cd	17.053	+/-	4.110
Ag	241.922	+/-	7.300
Bal	858057.688	+/-	682.831
Nb	11.758	+/-	2.185
Zr	13.771	+/-	5.956
Y	2.528	+/-	1.681
Sr	26.411	+/-	1.670
Rb	10.652	+/-	3.266
Th	1.000	+/-	82.753
Bi	1.000	+/-	80.612
Au	1286.561	+/-	26.742
As	96.095	+/-	11.130
Se	1.000	+/-	3.367
Pb	275.862	+/-	9.144
Hg	7.563	+/-	3.253
Zn	54.723	+/-	8.888
Cu	554.241	+/-	20.317
Ni	1.000	+/-	17.797
Co	1.000	+/-	45.163
Fe	14260.495	+/-	164.210
Mn	1.000	+/-	41.767
Cr	52.816	+/-	20.484
V	47.355	+/-	22.552
Ti	1083.255	+/-	130.154
Ca	15355.333	+/-	193.249
K	4630.108	+/-	188.701
Al	17031.381	+/-	781.191
P	12435.542	+/-	175.097
Si	66454.688	+/-	803.795
Cl	1245.058	+/-	26.671
S	6747.081	+/-	75.070
Mg	1.000	+/-	3669.269

mRFA -Ergebnisse

XL3t-69288

Reading No 32
Mode Mining
Time 2019-10-24 13:22
Duration 120.31
Units ppm
Sigma Value 2
Sequence Final
Flags
INV NR Gm1388
OBJEKT TAFELGEMAELEN
MATERIAL HOLZ METALL FASSUNG
ANALYSESTELLE P22 ZEH
MESSAUFBAU STATIV
FILTER m30lo30hi30li30
User Login Raquet

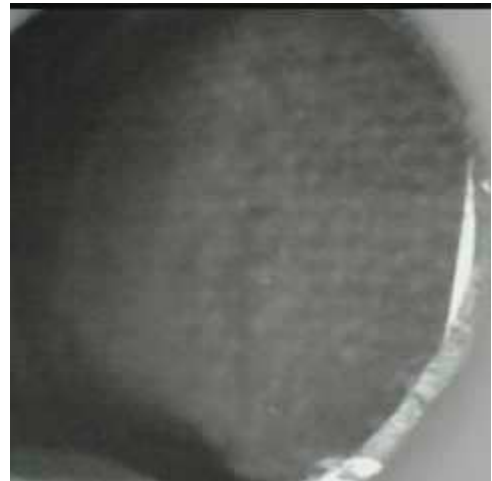


Ele	ppm	+/-	$\pm 2\sigma$
Ce	-339.000	+/-	119.922
La	1.000	+/-	55.202
Ba	1.000	+/-	58.492
Sb	1.000	+/-	23.393
Sn	28.034	+/-	10.900
Cd	1.000	+/-	9.466
Ag	1.000	+/-	6.704
Bal	837002.563	+/-	1312.335
Nb	63.349	+/-	24.532
Zr	1.000	+/-	80.543
Y	1.000	+/-	20.060
Sr	6.286	+/-	5.929
Rb	1.000	+/-	39.990
Th	1.000	+/-	1115.237
Bi	1.000	+/-	899.326
Au	1.000	+/-	33.896
As	7641.441	+/-	210.355
Se	1.000	+/-	21.556
Pb	38211.609	+/-	595.646
Hg	621.243	+/-	29.722
Zn	157.457	+/-	17.042
Cu	343.212	+/-	27.130
Ni	1.000	+/-	33.932
Co	1.000	+/-	50.897
Fe	5653.945	+/-	176.116
Mn	78.922	+/-	71.140
Cr	25.417	+/-	20.008
V	1.000	+/-	19.474
Ti	1.000	+/-	85.907
Ca	15026.503	+/-	301.476
K	1113.535	+/-	124.261
Al	6335.717	+/-	778.455
P	6481.313	+/-	206.172
Si	26125.664	+/-	717.299
Cl	3039.431	+/-	67.350
S	36589.293	+/-	616.259
Mg	15455.129	+/-	7314.053

mRFA -Ergebnisse

XL3t-69288

Reading No 33
Mode Mining
Time 2019-10-24 13:28
Duration 121.96
Units ppm
Sigma Value 2
Sequence Final
Flags
INV NR Gm1388
OBJEKT TAFELGEMAELEN
MATERIAL HOLZ METALL FASSUNG
ANALYSESTELLE P23 AUGENLID
MESSAUFBAU STATIV
FILTER m30lo30hi30li30
User Login Raquet



Ele	ppm	+/-	$\pm 2\sigma$
Ce	-339.000	+/-	138.591
La	1.000	+/-	63.509
Ba	1.000	+/-	67.310
Sb	1.000	+/-	34.987
Sn	39.535	+/-	12.626
Cd	1.000	+/-	7.442
Ag	1.000	+/-	6.584
Bal	832769.188	+/-	1493.692
Nb	73.231	+/-	32.186
Zr	1.000	+/-	102.574
Y	1.000	+/-	26.281
Sr	1.000	+/-	9.144
Rb	1.000	+/-	52.670
Th	1.000	+/-	1399.198
Bi	1.000	+/-	1082.106
Au	1.000	+/-	43.134
As	9631.547	+/-	265.119
Se	16.985	+/-	15.702
Pb	50082.078	+/-	826.001
Hg	772.369	+/-	36.932
Zn	161.165	+/-	19.023
Cu	302.753	+/-	28.420
Ni	1.000	+/-	38.630
Co	1.000	+/-	66.583
Fe	2323.875	+/-	120.506
Mn	1.000	+/-	130.697
Cr	1.000	+/-	32.675
V	1.000	+/-	20.644
Ti	1.000	+/-	85.259
Ca	17924.246	+/-	364.090
K	737.018	+/-	122.196
Al	6817.953	+/-	813.873
P	5917.576	+/-	208.460
Si	28059.566	+/-	772.241
Cl	2719.630	+/-	65.543
S	41651.297	+/-	742.170
Mg	1.000	+/-	7757.054