

Certificate of Verification

XL3t-69288

Reading No 1
Mode Mining
Time 2015-09-22 14:53
Duration 122.21
Units ppm
Sigma Value 2
Sequence Final
Flags
INV NR Gm525
OBJEKT TAGELGEMAELEN
MATERIAL HOLZ METALL FASSUNG
ANALYSESTELLE **P1 NIMBUS**
MESSAUFBAU STATIV ANLIEGEND
FILTER m30lo30hi30li30
User Login Raquet



	ppm	+/-	Error
Ce	-339.000	+/-	83.033
La	1.000	+/-	38.286
Ba	1.000	+/-	41.034
Sb	1.000	+/-	17.259
Sn	82.116	+/-	9.362
Cd	10.195	+/-	5.718
Ag	23.927	±/±	4.489
Bal	783849.000	+/-	1092.950
Nb	10.402	+/-	6.301
Zr	1.000	+/-	23.783
Y	1.000	+/-	5.214
Sr	305.582	+/-	6.321
Rb	12.999	+/-	10.711
Th	1.000	+/-	334.100
Bi	1.000	+/-	339.627
Au	1896.625	+/-	42.163
As	1949.359	+/-	61.478
Se	1.000	+/-	10.082
Pb	6753.713	+/-	78.916
Hg	1.000	+/-	7.159
Zn	84.989	+/-	11.876
Cu	497.896	+/-	23.304
Ni	1.000	+/-	23.471
Co	1.000	+/-	31.048
Fe	3743.897	+/-	102.795
Mn	1.000	+/-	52.125
Cr	71.184	+/-	19.091
V	1.000	+/-	13.682
Ti	87.158	+/-	73.884
Ca	108282.195	+/-	918.775
K	1249.463	+/-	126.552
Al	4667.717	+/-	924.687
P	36421.164	±/±	446.718
Si	20320.246	+/-	705.803
Cl	2033.477	+/-	46.901
S	27646.686	+/-	279.041
Mg	1.000	+/-	9272.592

Supervised By: _____

Certificate of Verification

XL3t-69288

Reading No 2
Mode Mining
Time 2015-09-22 14:58
Duration 121.01
Units ppm
Sigma Value 2
Sequence Final
Flags
INV NR Gm525
OBJEKT TAGELGEMAELEN
MATERIAL HOLZ METALL FASSUNG
ANALYSESTELLE **P2 SCHWARZZEICHNUNG**
MESSAUFBAU STATIV ANLIEGEND
FILTER m30lo30hi30li30
User Login Raquet



	ppm	+/-	Error
Ce	-339.000	+/-	114.140
La	1.000	+/-	52.120
Ba	1.000	+/-	55.844
Sb	1.000	+/-	18.883
Sn	117.613	+/-	12.705
Cd	7.378	+/-	7.283
Ag	23.565	±/±	5.625
Bal	836441.375	+/-	1174.688
Nb	50.059	+/-	17.298
Zr	1.000	+/-	59.222
Y	1.000	+/-	14.547
Sr	264.506	+/-	8.772
Rb	1.000	+/-	33.159
Th	1.000	+/-	844.855
Bi	1.000	+/-	809.829
Au	1701.096	+/-	57.803
As	4784.471	+/-	155.747
Se	1.000	+/-	20.645
Pb	25964.859	+/-	383.038
Hg	1.000	+/-	14.440
Zn	155.309	+/-	21.698
Cu	12602.968	+/-	220.701
Ni	1.000	+/-	31.435
Co	1.000	+/-	37.011
Fe	2838.717	+/-	112.447
Mn	1.000	+/-	62.982
Cr	1.000	+/-	30.976
V	1.000	+/-	19.895
Ti	1.000	+/-	99.489
Ca	55999.789	+/-	771.824
K	1140.193	+/-	132.888
Al	2454.844	+/-	745.189
P	12425.881	+/-	278.756
Si	13112.644	+/-	545.727
Cl	2963.860	+/-	63.074
S	26950.867	+/-	396.140
Mg	1.000	+/-	11408.417

Supervised By: _____

Certificate of Verification

XL3t-69288

Reading No 3
Mode Mining
Time 2015-09-22 15:04
Duration 121.34
Units ppm
Sigma Value 2
Sequence Final
Flags
INV NR Gm525
OBJEKT TAGELGEMAELEN
MATERIAL HOLZ METALL FASSUNG
ANALYSESTELLE **P3 GEWAND**
MESSAUFBAU STATIV ANLIEGEND
FILTER m30lo30hi30li30
User Login Raquet



	ppm	+/-	Error
Ce	346.041	+/-	301.728
La	262.203	+/-	136.517
Ba	322.446	+/-	144.528
Sb	1.000	+/-	43.663
Sn	154.926	±/±	28.108
Cd	1.000	+/-	15.195
Ag	1.000	+/-	10.006
Bal	706782.938	+/-	4407.128
Nb	294.237	+/-	85.611
Zr	1.000	+/-	244.232
Y	1.000	+/-	67.374
Sr	61.080	+/-	15.968
Rb	1.000	+/-	138.227
Th	1.000	+/-	3119.788
Bi	1.000	+/-	2394.079
Au	1.000	+/-	67.321
As	17148.223	+/-	555.572
Se	53.841	+/-	38.458
Pb	131343.313	+/-	2832.916
Hg	1.000	+/-	40.133
Zn	188.527	+/-	30.828
Cu	13892.443	+/-	307.919
Ni	185.800	+/-	61.246
Co	120.773	+/-	50.189
Fe	563.714	+/-	100.242
Mn	163.447	+/-	107.668
Cr	1.000	+/-	35.600
V	1.000	+/-	34.759
Ti	1.000	+/-	138.604
Ca	21992.990	+/-	515.154
K	1072.706	+/-	182.067
Al	5503.922	+/-	1123.890
P	3345.031	+/-	198.679
Si	17676.680	+/-	664.423
Cl	4802.093	+/-	122.964
S	45923.125	+/-	948.389
Mg	27459.566	+/-	11846.830

Supervised By: _____

Certificate of Verification

XL3t-69288

Reading No 4
Mode Mining
Time 2015-09-22 15:08
Duration 121.74
Units ppm
Sigma Value 2
Sequence Final
Flags
INV NR Gm525
OBJEKT TAGELGEMAELEN
MATERIAL HOLZ METALL FASSUNG
ANALYSESTELLE **P4 NIMBUS RETUSCHE**
MESSAUFBAU STATIV ANLIEGEND
FILTER m30lo30hi30li30
User Login Raquet



	ppm	+/-	Error
Ce	-339.000	+/-	85.680
La	1.000	+/-	39.115
Ba	1.000	+/-	42.345
Sb	1.000	+/-	17.791
Sn	180.910	+/-	11.373
Cd	21.810	+/-	6.162
Ag	25.073	±/±	4.590
Bal	860647.125	+/-	832.319
Nb	16.057	+/-	8.485
Zr	1.000	+/-	34.474
Y	1.000	+/-	7.181
Sr	279.703	+/-	6.865
Rb	1.000	+/-	20.250
Th	1.000	+/-	445.483
Bi	1.000	+/-	477.369
Au	1306.841	+/-	39.971
As	2641.376	+/-	83.161
Se	1.000	+/-	11.472
Pb	9884.688	+/-	126.647
Hg	1.000	+/-	8.260
Zn	1823.926	+/-	43.105
Cu	12878.211	+/-	181.108
Ni	1.000	+/-	25.793
Co	1.000	+/-	34.067
Fe	3988.572	+/-	112.390
Mn	1.000	+/-	54.469
Cr	19.111	+/-	19.067
V	1.000	+/-	23.777
Ti	84.910	+/-	80.067
Ca	63869.254	+/-	677.720
K	1644.059	+/-	128.232
Al	1872.845	+/-	608.629
P	6996.530	+/-	176.447
Si	12016.909	+/-	459.505
Cl	4044.046	+/-	63.525
S	15758.019	+/-	195.436
Mg	1.000	+/-	8222.378

Supervised By: _____

Certificate of Verification

XL3t-69288

Reading No 5
Mode Mining
Time 2015-09-22 15:13
Duration 120.50
Units ppm
Sigma Value 2
Sequence Final
Flags
INV NR Gm525
OBJEKT TAGELGEMAELEN
MATERIAL HOLZ METALL FASSUNG
ANALYSESTELLE **P5 DACH**
MESSAUFBAU STATIV ANLIEGEND
FILTER m30lo30hi30li30
User Login Raquet



	ppm	+/-	Error
Ce	598.243	+/-	337.649
La	424.017	+/-	153.275
Ba	401.761	+/-	161.078
Sb	1.000	+/-	49.802
Sn	148.532	+/-	30.862
Cd	1.000	+/-	16.465
Ag	23.968	+/-	13.325
Bal	683940.125	+/-	4524.509
Nb	1.000	+/-	59.570
Zr	1.000	+/-	190.159
Y	1.000	+/-	55.080
Sr	1.000	+/-	36.385
Rb	1.000	+/-	103.974
Th	1.000	+/-	3049.854
Bi	1.000	+/-	1921.007
Au	1.000	+/-	205.737
As	23123.389	+/-	639.563
Se	98.706	+/-	70.504
Pb	69653.656	+/-	1793.597
Hg	34428.094	+/-	787.147
Zn	1293.026	+/-	92.225
Cu	188.612	+/-	40.333
Ni	265.016	+/-	72.413
Co	123.233	+/-	83.813
Fe	5234.359	+/-	247.023
Mn	423.112	+/-	143.869
Cr	1.000	+/-	59.396
V	1.000	+/-	58.543
Ti	1.000	+/-	184.708
Ca	12263.999	+/-	381.619
K	1257.610	+/-	227.461
Al	5092.215	+/-	1573.453
P	37967.590	+/-	907.734
Si	24264.459	+/-	1006.132
Cl	4979.181	+/-	147.928
S	93467.102	+/-	2062.581
Mg	1.000	+/-	21687.252

Supervised By: _____

Certificate of Verification

XL3t-69288

Reading No 6
Mode Mining
Time 2015-09-22 15:20
Duration 121.27
Units ppm
Sigma Value 2
Sequence Final
Flags
INV NR Gm525
OBJEKT TAGELGEMAELEN
MATERIAL HOLZ METALL FASSUNG
ANALYSESTELLE **P6 RAHMEN**
MESSAUFBAU STATIV ANLIEGEND
FILTER m30lo30hi30li30
User Login Raquet



	ppm	+/-	Error
Ce	-339.000	+/-	68.587
La	1.000	+/-	31.398
Ba	1.000	+/-	33.981
Sb	1.000	+/-	11.571
Sn	1.000	+/-	7.039
Cd	6.898	+/-	4.781
Ag	455.386	+/-	10.926
Bal	818664.188	+/-	863.234
Nb	1.000	+/-	1.152
Zr	1.000	+/-	3.615
Y	1.000	+/-	1.000
Sr	233.729	+/-	4.516
Rb	1.000	+/-	2.350
Th	1.000	+/-	56.459
Bi	1.000	+/-	41.406
Au	1.000	+/-	3.270
As	25.074	+/-	5.402
Se	1.000	+/-	1.168
Pb	31.608	+/-	4.153
Hg	4.176	+/-	1.781
Zn	119.689	+/-	9.298
Cu	1.000	+/-	9.052
Ni	1.000	+/-	20.271
Co	1.000	+/-	23.951
Fe	2467.869	+/-	75.765
Mn	1.000	+/-	52.404
Cr	35.520	+/-	17.986
V	1.000	+/-	33.303
Ti	2158.301	+/-	141.786
Ca	113515.875	+/-	644.338
K	4026.693	+/-	175.051
Al	12121.182	+/-	971.656
P	1.000	+/-	86.778
Si	40604.719	+/-	771.591
Cl	928.708	+/-	32.296
S	4600.434	+/-	72.313
Mg	1.000	+/-	6406.634

Supervised By: _____

Certificate of Verification

XL3t-69288

Reading No 4
Mode Mining
Time 2015-09-22 16:29
Duration 120.38
Units ppm
Sigma Value 2
Sequence Final
Flags
INV NR Gm525
OBJEKT TAFELGEMAELEN
MATERIAL HOLZ METALL FASSUNG
ANALYSESTELLE **P7 FASSUNGSSCHOLLE RS**
MESSAUFBAU PROBEKAMMER
FILTER m30lo30hi30li30
User Login Raquet



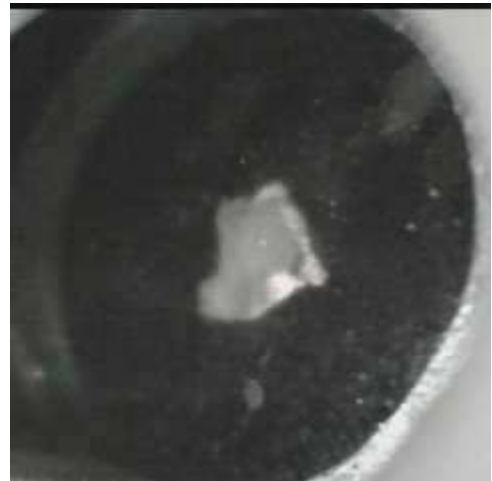
	ppm	+/-	Error
Ce	-339.000	+/-	295.841
La	1.000	+/-	136.708
Ba	356.696	+/-	159.119
Sb	69.018	+/-	55.070
Sn	622.649	+/-	65.775
Cd	1.000	+/-	29.303
Ag	15.984	+/-	15.364
Bal	418629.031	+/-	8144.379
Nb	1.000	+/-	46.526
Zr	1.000	+/-	150.862
Y	1.000	+/-	32.351
Sr	894.480	+/-	37.912
Rb	1.000	+/-	53.033
Th	1.000	+/-	1623.363
Bi	1.000	+/-	1493.378
Au	85.790	+/-	46.470
As	1.000	+/-	259.272
Se	1.000	+/-	36.985
Pb	20010.320	+/-	604.662
Hg	255.629	+/-	28.350
Zn	296.038	+/-	51.980
Cu	1049.917	+/-	117.480
Ni	1.000	+/-	150.022
Co	1.000	+/-	229.128
Fe	29309.771	+/-	1065.486
Mn	1771.740	+/-	276.945
Cr	150.169	+/-	101.349
V	1.000	+/-	112.326
Ti	1.000	+/-	811.900
Ca	381622.125	+/-	6529.899
K	7623.952	+/-	481.714
Al	7402.633	+/-	4818.194
P	7940.518	+/-	460.104
Si	46603.141	+/-	1815.325
Cl	1861.182	+/-	128.462
S	16953.994	+/-	381.603
Mg	56475.164	+/-	52282.156

Supervised By: _____

Certificate of Verification

XL3t-69288

Reading No 5
Mode Mining
Time 2015-09-22 16:33
Duration 121.81
Units ppm
Sigma Value 2
Sequence Final
Flags
INV NR Gm525
OBJEKT TAFELGEMAELEN
MATERIAL HOLZ METALL FASSUNG
ANALYSESTELLE **P8 FASSUNGSSCHOLLE VS**
MESSAUFBAU PROBEKAMMER
FILTER m30lo30hi30li30
User Login Raquet



	ppm	+/-	Error
Ce	-339.000	+/-	370.538
La	1.000	+/-	168.839
Ba	421.682	+/-	201.691
Sb	1.000	+/-	64.143
Sn	878.952	+/-	87.591
Cd	1.000	+/-	36.266
Ag	1.000	+/-	20.509
Bal	555278.375	+/-	6966.710
Nb	102.836	+/-	57.739
Zr	1.000	+/-	185.626
Y	1.000	+/-	53.091
Sr	774.808	+/-	37.578
Rb	1.000	+/-	100.444
Th	1.000	+/-	2650.866
Bi	1.000	+/-	2653.964
Au	1.000	+/-	68.386
As	16194.014	+/-	657.703
Se	83.734	+/-	59.810
Pb	58776.590	+/-	1825.233
Hg	1.000	+/-	39.777
Zn	323.697	+/-	41.851
Cu	478.795	+/-	82.615
Ni	287.177	+/-	127.313
Co	1.000	+/-	116.338
Fe	1772.807	+/-	208.991
Mn	270.538	+/-	174.435
Cr	1.000	+/-	117.425
V	1.000	+/-	102.630
Ti	1.000	+/-	384.179
Ca	234584.750	+/-	5360.698
K	1154.284	+/-	431.011
Al	7346.802	+/-	4022.749
P	3349.581	+/-	497.602
Si	25843.354	+/-	1493.165
Cl	4738.828	+/-	200.520
S	87338.469	+/-	1971.370
Mg	1.000	+/-	42173.258

Supervised By: _____

mRFA -Ergebnisse

XL3t-69288

Reading No 1
 Mode Mining
 Time 2018-05-24 15:18
 Duration 120.37
 Units ppm
 Sigma Value 2
 Sequence Final
 Flags
 INV NR Gm525
 OBJEKT TAFELGEMAELEN
 MATERIAL HOLZ METALL FASSUNG
 ANALYSESTELLE P9 BF2 GEWAND
 MESSAUFBAU STATIV
 FILTER m30lo30hi30li30
 User Login Raquet



	ppm	+/-	Error
Ce	-339.000	+/-	130.674
La	1.000	+/-	59.680
Ba	1.000	+/-	63.783
Sb	1.000	+/-	20.782
Sn	76.408	+/-	12.894
Cd	1.000	+/-	10.257
Ag	1.000	+/-	4.545
Bal	838013.750	+/-	1365.344
Nb	1.000	+/-	34.059
Zr	1.000	+/-	78.648
Y	1.000	+/-	19.352
Sr	139.615	+/-	7.747
Rb	1.000	+/-	40.439
Th	1.000	+/-	1109.609
Bi	1.000	+/-	892.567
Au	1.000	+/-	27.129
As	4817.783	+/-	189.668
Se	1.000	+/-	16.165
Pb	29853.021	+/-	498.003
Hg	1.000	+/-	15.271
Zn	42.784	+/-	35.235
Cu	62829.934	+/-	883.332
Ni	1.000	+/-	33.901
Co	1.000	+/-	29.786
Fe	1092.584	+/-	73.102
Mn	106.200	+/-	67.206
Cr	1.000	+/-	20.969
V	1.000	+/-	25.948
Ti	1.000	+/-	133.563
Ca	25582.990	+/-	400.030
K	849.552	+/-	120.182
Al	3809.265	+/-	666.648
P	1443.558	+/-	106.982
Si	14491.696	+/-	478.700
Cl	2151.608	+/-	47.471
S	14699.247	+/-	229.257
Mg	1.000	+/-	6407.030

mRFA -Ergebnisse

XL3t-69288

Reading No 2
 Mode Mining
 Time 2018-05-24 15:22
 Duration 120.78
 Units ppm
 Sigma Value 2
 Sequence Final
 Flags
 INV NR Gm525
 OBJEKT TAFELGEMAELEN
 MATERIAL HOLZ METALL FASSUNG
 ANALYSESTELLE P10 BF2 GEWAND GELB
 MESSAUFBAU STATIV
 FILTER m30lo30hi30li30
 User Login Raquet



	ppm	+/-	Error
Ce	-339.000	+/-	247.860
La	1.000	+/-	121.612
Ba	1.000	+/-	132.261
Sb	81.391	+/-	32.054
Sn	7727.516	+/-	162.549
Cd	44.496	+/-	13.954
Ag	8.216	+/-	7.799
Bal	822204.188	+/-	1940.092
Nb	47.520	+/-	43.215
Zr	1.000	+/-	134.953
Y	1.000	+/-	34.938
Sr	157.614	+/-	11.221
Rb	1.000	+/-	93.281
Th	1.000	+/-	2483.117
Bi	1.000	+/-	1395.780
Au	1.000	+/-	40.848
As	11446.006	+/-	361.283
Se	1.000	+/-	17.549
Pb	61474.719	+/-	1286.994
Hg	1.000	+/-	22.829
Zn	146.351	+/-	16.373
Cu	210.864	+/-	29.338
Ni	49.673	+/-	48.528
Co	75.613	+/-	42.813
Fe	921.504	+/-	96.123
Mn	1.000	+/-	121.611
Cr	134.216	+/-	25.274
V	1.000	+/-	18.120
Ti	1.000	+/-	94.730
Ca	10803.596	+/-	358.339
K	377.775	+/-	198.700
Al	3335.898	+/-	842.929
P	3270.532	+/-	199.584
Si	18680.477	+/-	724.064
Cl	3594.302	+/-	107.274
S	44190.887	+/-	1098.411
Mg	11016.643	+/-	8982.264

mRFA -Ergebnisse

XL3t-69288

Reading No 3
 Mode Mining
 Time 2018-05-24 15:26
 Duration 121.88
 Units ppm
 Sigma Value 2
 Sequence Final
 Flags
 INV NR Gm525
 OBJEKT TAFELGEMAELEN
 MATERIAL HOLZ METALL FASSUNG
 ANALYSESTELLE P11 BF2 BEINKLEID ROT
 MESSAUFBAU STATIV
 FILTER m30lo30hi30li30
 User Login Raquet



	ppm	+/-	Error
Ce	-339.000	+/-	162.672
La	1.000	+/-	79.507
Ba	1.000	+/-	78.848
Sb	1.000	+/-	25.677
Sn	90.235	+/-	15.818
Cd	1.000	+/-	8.902
Ag	1.000	+/-	5.308
Bal	813383.938	+/-	1743.833
Nb	1.000	+/-	25.370
Zr	1.000	+/-	88.232
Y	1.000	+/-	22.802
Sr	45.105	+/-	15.878
Rb	1.000	+/-	50.948
Th	1.000	+/-	1427.146
Bi	1.000	+/-	948.588
Au	1.000	+/-	90.509
As	9348.197	+/-	254.301
Se	21.412	+/-	16.769
Pb	29719.443	+/-	568.570
Hg	12423.645	+/-	230.773
Zn	600.639	+/-	49.101
Cu	1073.386	+/-	52.881
Ni	48.356	+/-	46.599
Co	1.000	+/-	91.792
Fe	16100.071	+/-	394.260
Mn	221.357	+/-	96.074
Cr	51.611	+/-	28.008
V	1.000	+/-	30.323
Ti	1.000	+/-	124.376
Ca	30724.426	+/-	587.970
K	2255.559	+/-	190.221
Al	5485.772	+/-	901.820
P	9976.119	+/-	279.801
Si	25811.043	+/-	782.925
Cl	3442.228	+/-	81.441
S	39177.531	+/-	703.993
Mg	1.000	+/-	8837.018

mRFA -Ergebnisse

XL3t-69288

Reading No 4
 Mode Mining
 Time 2018-05-24 15:29
 Duration 121.19
 Units ppm
 Sigma Value 2
 Sequence Final
 Flags
 INV NR Gm525
 OBJEKT TAFELGEMAELENDE
 MATERIAL HOLZ METALL FASSUNG
 ANALYSESTELLE P12 BF4 HEMD
 MESSAUFBAU STATIV
 FILTER m30lo30hi30li30
 User Login Raquet



	ppm	+/-	Error
Ce	-339.000	+/-	136.663
La	1.000	+/-	62.075
Ba	1.000	+/-	65.987
Sb	1.000	+/-	21.521
Sn	73.336	+/-	13.285
Cd	1.000	+/-	8.157
Ag	1.000	+/-	4.845
Bal	834367.438	+/-	1497.706
Nb	31.894	+/-	30.461
Zr	1.000	+/-	99.013
Y	1.000	+/-	24.796
Sr	144.539	+/-	8.660
Rb	1.000	+/-	67.863
Th	1.000	+/-	1831.198
Bi	1.000	+/-	1053.944
Au	1.000	+/-	31.655
As	10128.471	+/-	288.908
Se	1.000	+/-	15.180
Pb	44925.348	+/-	870.026
Hg	1.000	+/-	17.700
Zn	136.789	+/-	19.072
Cu	8602.298	+/-	202.399
Ni	1.000	+/-	37.656
Co	71.584	+/-	31.526
Fe	161.069	+/-	57.198
Mn	120.107	+/-	77.958
Cr	1.000	+/-	20.864
V	1.000	+/-	17.426
Ti	1.000	+/-	80.568
Ca	20767.379	+/-	445.896
K	563.382	+/-	114.435
Al	3591.231	+/-	736.461
P	2999.340	+/-	170.415
Si	14910.505	+/-	562.280
Cl	3064.525	+/-	80.327
S	39655.281	+/-	840.148
Mg	15685.429	+/-	7898.349

mRFA -Ergebnisse

XL3t-69288

Reading No 5
 Mode Mining
 Time 2018-05-24 15:35
 Duration 121.07
 Units ppm
 Sigma Value 2
 Sequence Final
 Flags
 INV NR Gm525
 OBJEKT TAFELGEMAELENDE
 MATERIAL HOLZ METALL FASSUNG
 ANALYSESTELLE P13 BF10 MANTEL
 MESSAUFBAU STATIV
 FILTER m30lo30hi30li30
 User Login Raquet



	ppm	+/-	Error
Ce	-339.000	+/-	109.154
La	1.000	+/-	50.140
Ba	1.000	+/-	53.535
Sb	1.000	+/-	17.860
Sn	68.018	+/-	11.123
Cd	19.511	+/-	7.435
Ag	1.000	+/-	6.263
Bal	874713.688	+/-	859.062
Nb	1.000	+/-	24.043
Zr	1.000	+/-	51.714
Y	1.000	+/-	12.452
Sr	222.615	+/-	7.298
Rb	1.000	+/-	36.940
Th	1.000	+/-	887.620
Bi	1.000	+/-	576.195
Au	1.000	+/-	18.444
As	5056.214	+/-	141.807
Se	1.000	+/-	11.065
Pb	21146.426	+/-	320.069
Hg	1.000	+/-	10.646
Zn	133.790	+/-	12.149
Cu	345.567	+/-	24.405
Ni	1.000	+/-	28.414
Co	1.000	+/-	27.767
Fe	1216.734	+/-	76.744
Mn	280.610	+/-	72.657
Cr	35.729	+/-	20.319
V	1.000	+/-	23.129
Ti	181.434	+/-	107.663
Ca	50412.547	+/-	759.746
K	3552.177	+/-	171.195
Al	6099.463	+/-	724.998
P	988.071	+/-	113.270
Si	17737.180	+/-	565.178
Cl	1726.526	+/-	45.137
S	16063.729	+/-	268.372
Mg	1.000	+/-	6080.927

mRFA -Ergebnisse

XL3t-69288

Reading No 6
 Mode Mining
 Time 2018-05-24 15:39
 Duration 120.54
 Units ppm
 Sigma Value 2
 Sequence Final
 Flags 3mm
 INV NR Gm525
 OBJEKT TAFELGEMAELENDE
 MATERIAL HOLZ METALL FASSUNG
 ANALYSESTELLE P14 BF11 RUESTUNG
 MESSAUFBAU STATIV
 FILTER m30lo30hi30li30
 User Login Raquet



	ppm	+/-	Error
Ce	1.000	+/-	91.346
La	1.000	+/-	76.049
Ba	1.000	+/-	79.870
Sb	1.000	+/-	29.066
Sn	288.313	+/-	29.630
Cd	18.551	+/-	12.011
Ag	1.000	+/-	8.852
Bal	756660.313	+/-	2034.903
Nb	1.000	+/-	6.979
Zr	1.000	+/-	27.169
Y	1.000	+/-	6.304
Sr	196.453	+/-	7.988
Rb	1.000	+/-	17.561
Th	1.000	+/-	451.055
Bi	1.000	+/-	320.025
Au	1.000	+/-	11.200
As	867.305	+/-	65.125
Se	1.000	+/-	7.935
Pb	3731.561	+/-	79.564
Hg	1.000	+/-	7.380
Zn	38.224	+/-	11.413
Cu	234.499	+/-	28.490
Ni	1.000	+/-	32.035
Co	1.000	+/-	101.572
Fe	18962.250	+/-	416.736
Mn	1.000	+/-	88.739
Cr	42.975	+/-	28.290
V	1.000	+/-	39.002
Ti	656.324	+/-	142.067
Ca	81155.594	+/-	1044.241
K	5585.383	+/-	266.294
Al	11029.993	+/-	1181.703
P	540.542	+/-	135.219
Si	91296.961	+/-	1634.592
Cl	1897.858	+/-	63.265
S	9000.324	+/-	158.098
Mg	17796.586	+/-	8269.171

mRFA -Ergebnisse

XL3t-69288

Reading No 7
 Mode Mining
 Time 2018-05-24 15:45
 Duration 122.13
 Units ppm
 Sigma Value 2
 Sequence Final
 Flags
 INV NR Gm525
 OBJEKT TAFELGEMAELENDE
 MATERIAL HOLZ METALL FASSUNG
 ANALYSESTELLE P15 RS
 MESSAUFBAU STATIV
 FILTER m30lo30hi30li30
 User Login Raquet



	ppm	+/-	Error
Ce	-339.000	+/-	51.645
La	1.000	+/-	23.817
Ba	1.000	+/-	25.733
Sb	1.000	+/-	14.733
Sn	27.686	+/-	5.432
Cd	16.043	+/-	3.947
Ag	5.974	+/-	2.543
Bal	854824.813	+/-	638.445
Nb	4.978	+/-	2.358
Zr	1.000	+/-	8.526
Y	4.037	+/-	2.020
Sr	102.590	+/-	2.795
Rb	1.000	+/-	4.207
Th	1.000	+/-	103.709
Bi	1.000	+/-	86.529
Au	1.000	+/-	3.695
As	69.062	+/-	15.307
Se	1.000	+/-	2.015
Pb	678.470	+/-	13.922
Hg	24.662	+/-	2.851
Zn	44.945	+/-	6.495
Cu	138.351	+/-	12.435
Ni	1.000	+/-	17.028
Co	1.000	+/-	37.808
Fe	10279.061	+/-	137.523
Mn	1.000	+/-	39.055
Cr	30.722	+/-	16.540
V	1.000	+/-	26.231
Ti	388.253	+/-	92.669
Ca	110671.672	+/-	627.679
K	2779.388	+/-	140.769
Al	1.000	+/-	728.142
P	1.000	+/-	54.063
Si	7026.947	+/-	325.971
Cl	1062.775	+/-	27.394
S	1771.539	+/-	41.437
Mg	10047.992	+/-	5442.140

mRFA -Ergebnisse

XL3t-69288

Reading No 8
 Mode Mining
 Time 2018-05-24 15:49
 Duration 121.63
 Units ppm
 Sigma Value 2
 Sequence Final
 Flags
 INV NR Gm525
 OBJEKT TAFELGEMAELEN
 MATERIAL HOLZ METALL FASSUNG
 ANALYSESTELLE P16 RS
 MESSAUFBAU STATIV
 FILTER m30lo30hi30li30
 User Login Raquet



	ppm	+/-	Error
Ce	-339.000	+/-	82.082
La	1.000	+/-	37.834
Ba	1.000	+/-	40.588
Sb	1.000	+/-	21.399
Sn	44.940	+/-	8.401
Cd	9.880	+/-	5.696
Ag	1.000	+/-	5.308
Bal	852409.188	+/-	737.945
Nb	1.000	+/-	2.487
Zr	1.000	+/-	10.175
Y	1.000	+/-	2.135
Sr	339.186	+/-	5.957
Rb	1.000	+/-	5.093
Th	1.000	+/-	151.668
Bi	1.000	+/-	142.741
Au	1.000	+/-	6.147
As	272.828	+/-	24.175
Se	1.000	+/-	3.171
Pb	1214.615	+/-	22.012
Hg	55.729	+/-	4.816
Zn	109.142	+/-	9.913
Cu	453.759	+/-	21.435
Ni	1.000	+/-	21.845
Co	1.000	+/-	50.152
Fe	13839.521	+/-	187.453
Mn	1.000	+/-	54.172
Cr	36.210	+/-	22.069
V	1.000	+/-	36.756
Ti	360.341	+/-	127.670
Ca	112431.133	+/-	733.391
K	2391.653	+/-	149.241
Al	1.000	+/-	671.310
P	1.000	+/-	73.774
Si	3601.293	+/-	293.738
Cl	1082.461	+/-	32.545
S	3027.145	+/-	59.265
Mg	8320.940	+/-	6741.735

mRFA -Ergebnisse

XL3t-69288

Reading No 9
 Mode Mining
 Time 2018-05-24 15:52
 Duration 121.98
 Units ppm
 Sigma Value 2
 Sequence Final
 Flags
 INV NR Gm525
 OBJEKT TAFELGEMAELEN
 MATERIAL HOLZ METALL FASSUNG
 ANALYSESTELLE P17 RS
 MESSAUFBAU STATIV
 FILTER m30lo30hi30li30
 User Login Raquet

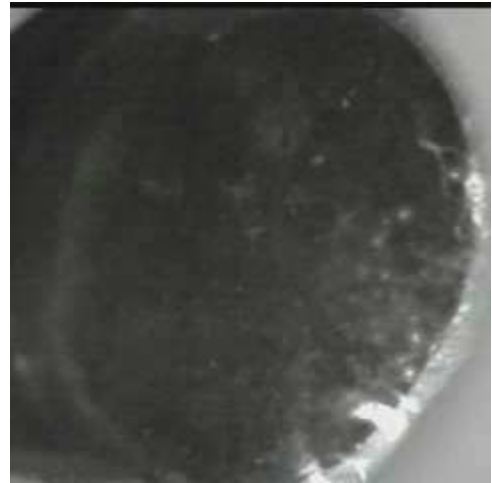


	ppm	+/-	Error
Ce	-339.000	+/-	65.955
La	1.000	+/-	30.254
Ba	1.000	+/-	32.582
Sb	1.000	+/-	18.674
Sn	249.852	+/-	10.526
Cd	18.411	+/-	4.947
Ag	5.365	+/-	3.104
Bal	835887.813	+/-	760.714
Nb	6.725	+/-	3.948
Zr	1.000	+/-	13.607
Y	1.000	+/-	2.950
Sr	210.830	+/-	4.507
Rb	1.000	+/-	8.806
Th	1.000	+/-	203.400
Bi	1.000	+/-	174.814
Au	1.000	+/-	6.966
As	626.162	+/-	34.056
Se	1.000	+/-	4.067
Pb	2631.865	+/-	34.073
Hg	53.227	+/-	5.502
Zn	69.465	+/-	8.406
Cu	648.775	+/-	23.556
Ni	1.000	+/-	19.731
Co	1.000	+/-	36.010
Fe	7049.606	+/-	127.042
Mn	1.000	+/-	44.652
Cr	1.000	+/-	24.646
V	24.433	+/-	20.059
Ti	219.095	+/-	106.710
Ca	139058.344	+/-	883.643
K	1714.639	+/-	136.697
Al	1.000	+/-	641.572
P	1.000	+/-	88.397
Si	5035.304	+/-	362.950
Cl	1296.271	+/-	37.165
S	5193.735	+/-	85.157
Mg	1.000	+/-	8478.512

mRFA -Ergebnisse

XL3t-69288

Reading No 10
 Mode Mining
 Time 2018-05-24 15:56
 Duration 120.83
 Units ppm
 Sigma Value 2
 Sequence Final
 Flags
 INV NR Gm525
 OBJEKT TAFELGEMAELEN
 MATERIAL HOLZ METALL FASSUNG
 ANALYSESTELLE P18 RS
 MESSAUFBAU STATIV
 FILTER m30lo30hi30li30
 User Login Raquet



	ppm	+/-	Error
Ce	-339.000	+/-	48.289
La	1.000	+/-	22.093
Ba	1.000	+/-	24.002
Sb	1.000	+/-	12.976
Sn	18.924	+/-	4.977
Cd	19.015	+/-	3.809
Ag	7.008	+/-	2.444
Bal	907737.250	+/-	407.497
Nb	10.206	+/-	1.916
Zr	7.724	+/-	4.913
Y	3.717	+/-	1.468
Sr	58.551	+/-	2.052
Rb	3.431	+/-	2.160
Th	1.000	+/-	67.246
Bi	1.000	+/-	52.678
Au	1.000	+/-	2.551
As	41.833	+/-	9.025
Se	1.000	+/-	1.230
Pb	228.675	+/-	7.738
Hg	4.355	+/-	1.719
Zn	189.104	+/-	9.653
Cu	86.855	+/-	10.682
Ni	1.000	+/-	15.404
Co	1.000	+/-	33.425
Fe	7734.925	+/-	112.913
Mn	327.118	+/-	49.674
Cr	1.000	+/-	18.032
V	1.000	+/-	29.580
Ti	199.315	+/-	106.304
Ca	73392.977	+/-	441.029
K	2464.125	+/-	122.822
Al	425.172	+/-	407.745
P	191.286	+/-	60.288
Si	3802.521	+/-	252.505
Cl	1851.254	+/-	32.990
S	1194.600	+/-	34.253
Mg	1.000	+/-	3934.120