

mRFA -Ergebnisse

XL3t-69288

Reading No 6
Mode Mining
Time 2018-11-27 12:01
Duration 120.36
Units ppm
Sigma Value 2
Sequence Final
Flags 3mm
INV NR Gm2325
OBJEKT TAFELGEMAELD
MATERIAL HOLZ METALL FASSUNG
ANALYSESTELLE P1 GEWAND SALOME
MESSAUFBAU STATIV
FILTER m30lo30hi30li30
User Login Raquet



	ppm	+/-	Error
Ce	387.562	+/-	343.811
La	1.000	+/-	403.146
Ba	1.000	+/-	467.165
Sb	1.000	+/-	89.363
Sn	11027.229	+/-	430.048
Cd	46.127	+/-	40.402
Ag	1.000	+/-	22.253
Bal	824901.438	+/-	3275.395
Nb	116.139	+/-	75.269
Zr	1.000	+/-	226.647
Y	1.000	+/-	60.383
Sr	109.936	+/-	17.761
Rb	1.000	+/-	142.871
Th	1.000	+/-	3545.421
Bi	1.000	+/-	2381.380
Au	1.000	+/-	75.934
As	10019.684	+/-	485.557
Se	1.000	+/-	39.679
Pb	86343.984	+/-	2387.961
Hg	1.000	+/-	49.589
Zn	467.159	+/-	54.311
Cu	22708.574	+/-	633.562
Ni	1.000	+/-	82.612
Co	1.000	+/-	102.581
Fe	1204.836	+/-	150.018
Mn	375.564	+/-	150.644
Cr	1.000	+/-	47.587
V	1.000	+/-	41.440
Ti	1.000	+/-	182.524
Ca	14660.232	+/-	516.823
K	3038.922	+/-	313.219
Al	970.212	+/-	815.184
P	642.761	+/-	137.492
Si	7682.270	+/-	575.319
Cl	2323.537	+/-	105.883
S	12973.871	+/-	404.236
Mg	1.000	+/-	14937.539

mRFA -Ergebnisse

XL3t-69288

Reading No 7
Mode Mining
Time 2018-11-27 12:05
Duration 120.45
Units ppm
Sigma Value 2
Sequence Final
Flags 3mm
INV NR Gm2325
OBJEKT TAFELGEMAELD
MATERIAL HOLZ METALL FASSUNG
ANALYSESTELLE P2 MANTEL ANNA
MESSAUFBAU STATIV
FILTER m30lo30hi30li30
User Login Raquet



	ppm	+/-	Error
Ce	1.000	+/-	176.477
La	1.000	+/-	142.689
Ba	1.000	+/-	196.017
Sb	1.000	+/-	50.409
Sn	1.000	+/-	38.630
Cd	26.068	+/-	20.363
Ag	1.000	+/-	10.200
Bal	913919.063	+/-	1043.161
Nb	33.628	+/-	30.341
Zr	1.000	+/-	101.081
Y	1.000	+/-	25.280
Sr	235.853	+/-	12.809
Rb	1.000	+/-	53.295
Th	1.000	+/-	1356.345
Bi	1.000	+/-	1245.828
Au	1.000	+/-	36.216
As	7229.758	+/-	259.142
Se	20.769	+/-	18.348
Pb	32587.137	+/-	708.361
Hg	1.000	+/-	21.091
Zn	494.818	+/-	34.428
Cu	396.280	+/-	40.045
Ni	1.000	+/-	42.269
Co	1.000	+/-	48.723
Fe	1327.105	+/-	128.338
Mn	142.941	+/-	112.574
Cr	1.000	+/-	44.696
V	1.000	+/-	26.229
Ti	1.000	+/-	123.248
Ca	19768.111	+/-	525.113
K	3566.266	+/-	256.132
Al	907.096	+/-	600.778
P	393.722	+/-	116.990
Si	7184.018	+/-	515.149
Cl	1289.571	+/-	65.980
S	10477.893	+/-	277.661
Mg	1.000	+/-	6459.294

mRFA -Ergebnisse

XL3t-69288

Reading No 8
Mode Mining
Time 2018-11-27 12:10
Duration 120.78
Units ppm
Sigma Value 2
Sequence Final
Flags 3mm
INV NR Gm2325
OBJEKT TAFELGEMAELD
MATERIAL HOLZ METALL FASSUNG
ANALYSESTELLE P3 NIMBUS KNABE
MESSAUFBAU STATIV
FILTER m30lo30hi30li30
User Login Raquet



	ppm	+/-	Error
Ce	1.000	+/-	141.276
La	1.000	+/-	116.611
Ba	1.000	+/-	121.632
Sb	45.683	+/-	43.545
Sn	502.362	+/-	46.157
Cd	1.000	+/-	21.319
Ag	11.169	+/-	10.824
Bal	879948.063	+/-	1257.578
Nb	1.000	+/-	33.745
Zr	1.000	+/-	76.593
Y	1.000	+/-	18.880
Sr	257.283	+/-	11.913
Rb	1.000	+/-	44.754
Th	1.000	+/-	1051.121
Bi	1.000	+/-	880.990
Au	1345.621	+/-	73.551
As	4654.965	+/-	188.302
Se	1.000	+/-	19.952
Pb	22812.260	+/-	454.276
Hg	1.000	+/-	18.040
Zn	621.549	+/-	39.483
Cu	1477.366	+/-	71.211
Ni	1.000	+/-	41.923
Co	1.000	+/-	94.412
Fe	11761.390	+/-	366.604
Mn	122.071	+/-	109.894
Cr	109.423	+/-	34.765
V	1.000	+/-	43.020
Ti	754.180	+/-	173.943
Ca	45348.688	+/-	873.380
K	2325.500	+/-	218.653
Al	2354.296	+/-	699.764
P	1148.598	+/-	133.633
Si	10800.015	+/-	588.422
Cl	1852.960	+/-	70.824
S	11746.604	+/-	253.426
Mg	1.000	+/-	6784.357

mRFA -Ergebnisse

XL3t-69288

Reading No 9
Mode Mining
Time 2018-11-27 12:15
Duration 120.53
Units ppm
Sigma Value 2
Sequence Final
Flags 3mm
INV NR Gm2325
OBJEKT TAFELGEMAELD
MATERIAL HOLZ METALL FASSUNG
ANALYSESTELLE P4 KLEID CLEOPHAS
MESSAUFBAU STATIV
FILTER m30lo30hi30li30
User Login Raquet



	ppm	+/-	Error
Ce	1.000	+/-	159.085
La	1.000	+/-	130.139
Ba	1.000	+/-	135.362
Sb	1.000	+/-	47.053
Sn	1.000	+/-	28.704
Cd	1.000	+/-	15.970
Ag	1.000	+/-	9.470
Bal	878218.938	+/-	1341.343
Nb	1.000	+/-	18.732
Zr	1.000	+/-	66.193
Y	1.000	+/-	16.374
Sr	200.050	+/-	13.321
Rb	1.000	+/-	30.261
Th	1.000	+/-	913.061
Bi	1.000	+/-	842.625
Au	1.000	+/-	57.767
As	2068.499	+/-	149.776
Se	1.000	+/-	17.702
Pb	13898.053	+/-	299.635
Hg	2761.145	+/-	78.641
Zn	152.549	+/-	51.440
Cu	54836.504	+/-	954.091
Ni	1.000	+/-	41.750
Co	56.517	+/-	51.752
Fe	1590.242	+/-	120.054
Mn	286.263	+/-	105.678
Cr	1.000	+/-	30.335
V	1.000	+/-	28.897
Ti	166.889	+/-	138.299
Ca	23249.699	+/-	460.126
K	1625.265	+/-	174.089
Al	833.701	+/-	579.195
P	2039.497	+/-	132.820
Si	7888.176	+/-	480.403
Cl	1139.988	+/-	52.326
S	8988.152	+/-	183.591
Mg	1.000	+/-	5819.667

mRFA -Ergebnisse

XL3t-69288

Reading No 10
Mode Mining
Time 2018-11-27 12:22
Duration 120.32
Units ppm
Sigma Value 2
Sequence Final
Flags 3mm
INV NR Gm2325
OBJEKT TAFELGEMAELD
MATERIAL HOLZ METALL FASSUNG
ANALYSESTELLE P5 BORTE MANTEL
MESSAUFBAU STATIV
FILTER m30lo30hi30li30
User Login Raquet



	ppm	+/-	Error
Ce	1.000	+/-	141.473
La	1.000	+/-	115.064
Ba	1.000	+/-	120.509
Sb	1.000	+/-	41.527
Sn	304.379	+/-	42.784
Cd	1.000	+/-	14.700
Ag	419.346	+/-	29.725
Bal	927663.375	+/-	793.179
Nb	1.000	+/-	30.986
Zr	1.000	+/-	69.246
Y	1.000	+/-	16.645
Sr	247.968	+/-	11.402
Rb	1.000	+/-	38.647
Th	1.000	+/-	947.718
Bi	1.000	+/-	862.970
Au	488.404	+/-	51.126
As	4495.634	+/-	176.322
Se	1.000	+/-	20.075
Pb	18509.086	+/-	381.560
Hg	1.000	+/-	15.602
Zn	240.849	+/-	24.288
Cu	146.809	+/-	27.412
Ni	1.000	+/-	40.355
Co	1.000	+/-	54.605
Fe	2516.012	+/-	160.288
Mn	1.000	+/-	104.355
Cr	35.701	+/-	32.704
V	1.000	+/-	36.902
Ti	677.720	+/-	156.916
Ca	16428.246	+/-	432.917
K	1641.124	+/-	238.388
Al	602.346	+/-	579.240
P	2442.400	+/-	161.693
Si	9837.708	+/-	595.618
Cl	2089.136	+/-	82.507
S	11213.797	+/-	276.237
Mg	1.000	+/-	6592.083

mRFA -Ergebnisse

XL3t-69288

Reading No 11
Mode Mining
Time 2018-11-27 12:26
Duration 120.99
Units ppm
Sigma Value 2
Sequence Final
Flags 3mm
INV NR Gm2325
OBJEKT TAFELGEMAELD
MATERIAL HOLZ METALL FASSUNG
ANALYSESTELLE P6 BISCHOFSSTAB
MESSAUFBAU STATIV
FILTER m30lo30hi30li30
User Login Raquet



	ppm	+/-	Error
Ce	1.000	+/-	145.679
La	1.000	+/-	117.605
Ba	1.000	+/-	124.015
Sb	1.000	+/-	41.409
Sn	193.440	+/-	38.373
Cd	1.000	+/-	21.524
Ag	277.497	+/-	25.111
Bal	911638.313	+/-	975.609
Nb	1.000	+/-	22.073
Zr	1.000	+/-	68.070
Y	1.000	+/-	16.501
Sr	265.793	+/-	12.189
Rb	1.000	+/-	50.991
Th	1.000	+/-	991.225
Bi	1.000	+/-	775.219
Au	4255.742	+/-	133.762
As	4124.126	+/-	168.401
Se	1.000	+/-	18.795
Pb	16756.922	+/-	352.606
Hg	1.000	+/-	17.875
Zn	298.929	+/-	33.811
Cu	2488.200	+/-	98.145
Ni	1.000	+/-	42.006
Co	1.000	+/-	59.257
Fe	3448.686	+/-	187.641
Mn	1.000	+/-	126.397
Cr	69.100	+/-	34.265
V	1.000	+/-	39.361
Ti	461.787	+/-	166.862
Ca	24056.307	+/-	558.847
K	2268.522	+/-	234.366
Al	1641.588	+/-	656.111
P	3453.762	+/-	179.735
Si	12368.004	+/-	663.223
Cl	2156.194	+/-	81.676
S	9777.074	+/-	234.099
Mg	1.000	+/-	6716.294

mRFA -Ergebnisse

XL3t-69288

Reading No 12
Mode Mining
Time 2018-11-27 12:30
Duration 122.20
Units ppm
Sigma Value 2
Sequence Final
Flags 3mm
INV NR Gm2325
OBJEKT TAFELGEMAELD
MATERIAL HOLZ METALL FASSUNG
ANALYSESTELLE P7 MITRA VERZIERUNG
MESSAUFBAU STATIV
FILTER m30lo30hi30li30
User Login Raquet



	ppm	+/-	Error
Ce	1.000	+/-	176.945
La	1.000	+/-	144.126
Ba	1.000	+/-	179.277
Sb	1.000	+/-	50.614
Sn	241.433	+/-	52.612
Cd	1.000	+/-	17.706
Ag	888.757	+/-	49.738
Bal	851421.813	+/-	1763.105
Nb	1.000	+/-	34.803
Zr	1.000	+/-	90.785
Y	1.000	+/-	21.874
Sr	183.902	+/-	11.624
Rb	1.000	+/-	47.276
Th	1.000	+/-	1244.074
Bi	1.000	+/-	1056.001
Au	253.623	+/-	51.673
As	3236.069	+/-	202.199
Se	1.000	+/-	23.600
Pb	23167.025	+/-	523.067
Hg	1.000	+/-	20.312
Zn	179.434	+/-	51.257
Cu	58584.266	+/-	1141.577
Ni	1.000	+/-	46.343
Co	1.000	+/-	64.553
Fe	1668.245	+/-	124.908
Mn	128.223	+/-	99.262
Cr	1.000	+/-	31.522
V	1.000	+/-	28.448
Ti	176.643	+/-	137.092
Ca	34147.352	+/-	672.903
K	1431.509	+/-	187.146
Al	899.709	+/-	654.635
P	566.448	+/-	107.117
Si	13600.608	+/-	641.110
Cl	1629.634	+/-	64.316
S	7595.279	+/-	175.459
Mg	1.000	+/-	8938.725

mRFA -Ergebnisse

XL3t-69288

Reading No 13
Mode Mining
Time 2018-11-27 12:34
Duration 122.12
Units ppm
Sigma Value 2
Sequence Final
Flags 3mm
INV NR Gm2325
OBJEKT TAFELGEMAELD
MATERIAL HOLZ METALL FASSUNG
ANALYSESTELLE P8 NIMBUS EMNE
MESSAUFBAU STATIV
FILTER m30lo30hi30li30
User Login Raquet



	ppm	+/-	Error
Ce	1.000	+/-	309.474
La	1.000	+/-	227.548
Ba	1.000	+/-	266.554
Sb	1.000	+/-	78.875
Sn	1.000	+/-	61.242
Cd	1.000	+/-	30.268
Ag	1.000	+/-	17.102
Bal	887604.625	+/-	1866.857
Nb	66.585	+/-	57.334
Zr	1.000	+/-	178.047
Y	1.000	+/-	46.668
Sr	176.563	+/-	16.518
Rb	1.000	+/-	102.333
Th	1.000	+/-	2528.572
Bi	1.000	+/-	1896.737
Au	1.000	+/-	61.719
As	11052.583	+/-	440.166
Se	1.000	+/-	33.994
Pb	58481.559	+/-	1557.961
Hg	1.000	+/-	37.243
Zn	551.350	+/-	44.232
Cu	349.436	+/-	46.882
Ni	1.000	+/-	56.797
Co	72.847	+/-	62.788
Fe	873.067	+/-	138.082
Mn	258.598	+/-	147.605
Cr	98.522	+/-	44.911
V	1.000	+/-	37.864
Ti	1.000	+/-	176.601
Ca	10201.962	+/-	393.991
K	328.157	+/-	187.549
Al	1272.177	+/-	792.315
P	655.850	+/-	155.104
Si	11030.786	+/-	740.100
Cl	1725.869	+/-	93.241
S	15199.467	+/-	490.331
Mg	1.000	+/-	14009.048

mRFA -Ergebnisse

XL3t-69288

Reading No 14
Mode Mining
Time 2018-11-27 12:38
Duration 122.11
Units ppm
Sigma Value 2
Sequence Final
Flags 3mm
INV NR Gm2325
OBJEKT TAFELGEMAELD
MATERIAL HOLZ METALL FASSUNG
ANALYSESTELLE P9 NIMBUS EMNE
MESSAUFBAU STATIV
FILTER m30lo30hi30li30
User Login Raquet



	ppm	+/-	Error
Ce	1.000	+/-	192.403
La	1.000	+/-	183.913
Ba	1.000	+/-	241.235
Sb	1.000	+/-	53.213
Sn	1.000	+/-	42.330
Cd	1.000	+/-	17.801
Ag	1.000	+/-	18.025
Bal	895141.375	+/-	1314.044
Nb	1.000	+/-	58.072
Zr	1.000	+/-	120.829
Y	1.000	+/-	30.763
Sr	184.949	+/-	12.519
Rb	1.000	+/-	83.095
Th	1.000	+/-	2031.698
Bi	1.000	+/-	1319.942
Au	714.359	+/-	73.500
As	9012.428	+/-	319.164
Se	1.000	+/-	19.683
Pb	43805.418	+/-	1027.268
Hg	1.000	+/-	24.653
Zn	609.675	+/-	39.673
Cu	405.737	+/-	40.540
Ni	1.000	+/-	55.566
Co	89.438	+/-	49.271
Fe	572.004	+/-	98.408
Mn	151.722	+/-	113.306
Cr	48.320	+/-	35.741
V	1.000	+/-	30.081
Ti	1.000	+/-	141.371
Ca	14225.760	+/-	428.077
K	522.756	+/-	150.096
Al	1118.473	+/-	615.711
P	1032.223	+/-	139.564
Si	14740.072	+/-	738.657
Cl	1832.322	+/-	79.865
S	15793.007	+/-	444.326
Mg	1.000	+/-	11289.694

mRFA -Ergebnisse

XL3t-69288

Reading No 15
Mode Mining
Time 2018-11-27 12:41
Duration 120.17
Units ppm
Sigma Value 2
Sequence Final
Flags 3mm
INV NR Gm2325
OBJEKT TAFELGEMAELD
MATERIAL HOLZ METALL FASSUNG
ANALYSESTELLE P10 KRONE MARIA
MESSAUFBAU STATIV
FILTER m30lo30hi30li30
User Login Raquet

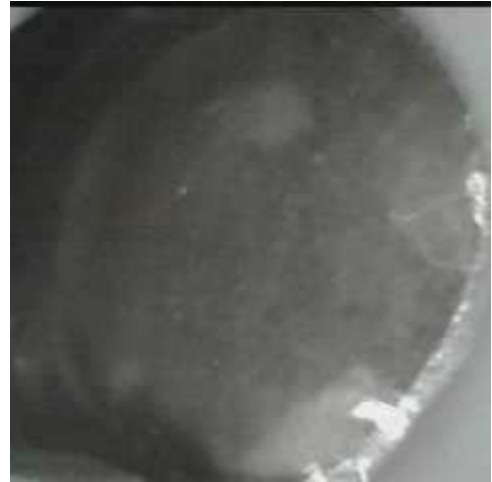


	ppm	+/-	Error
Ce	1.000	+/-	201.860
La	1.000	+/-	164.956
Ba	1.000	+/-	216.252
Sb	1.000	+/-	55.779
Sn	289.882	+/-	54.614
Cd	1.000	+/-	20.636
Ag	511.915	+/-	39.550
Bal	878351.000	+/-	1491.189
Nb	1.000	+/-	61.462
Zr	1.000	+/-	122.271
Y	1.000	+/-	30.568
Sr	166.212	+/-	12.112
Rb	1.000	+/-	79.049
Th	1.000	+/-	2015.493
Bi	1.000	+/-	1344.273
Au	152.234	+/-	58.328
As	7007.828	+/-	290.841
Se	1.000	+/-	20.229
Pb	43701.168	+/-	1011.450
Hg	1.000	+/-	24.331
Zn	243.714	+/-	37.004
Cu	21634.377	+/-	529.061
Ni	1.000	+/-	58.995
Co	1.000	+/-	51.520
Fe	1937.145	+/-	141.292
Mn	1.000	+/-	165.328
Cr	1.000	+/-	32.503
V	1.000	+/-	27.425
Ti	184.479	+/-	134.873
Ca	11087.488	+/-	330.577
K	1747.521	+/-	205.101
Al	1951.625	+/-	664.814
P	1143.798	+/-	134.915
Si	11735.170	+/-	617.180
Cl	2430.238	+/-	89.278
S	15724.214	+/-	405.041
Mg	1.000	+/-	7024.102

mRFA -Ergebnisse

XL3t-69288

Reading No 16
Mode Mining
Time 2018-11-27 12:46
Duration 121.92
Units ppm
Sigma Value 2
Sequence Final
Flags
INV NR Gm2325
OBJEKT TAFELGEMAELD
MATERIAL HOLZ METALL FASSUNG
ANALYSESTELLE P11 RS
MESSAUFBAU STATIV
FILTER m30lo30hi30li30
User Login Raquet



	ppm	+/-	Error
Ce	-339.000	+/-	97.965
La	1.000	+/-	44.770
Ba	1.000	+/-	60.415
Sb	1.000	+/-	16.327
Sn	11.982	+/-	8.943
Cd	27.823	+/-	7.062
Ag	1.000	+/-	3.444
Bal	803765.563	+/-	1448.393
Nb	1.000	+/-	2.643
Zr	1.000	+/-	8.116
Y	1.000	+/-	1.862
Sr	83.044	+/-	4.696
Rb	1.000	+/-	3.334
Th	1.000	+/-	119.388
Bi	1.000	+/-	92.794
Au	1.000	+/-	6.194
As	17.447	+/-	15.778
Se	1.000	+/-	2.881
Pb	202.357	+/-	14.274
Hg	1.000	+/-	2.115
Zn	91752.586	+/-	789.426
Cu	1.000	+/-	19.498
Ni	1.000	+/-	25.872
Co	1.000	+/-	42.774
Fe	6863.561	+/-	147.035
Mn	1.000	+/-	83.274
Cr	3975.974	+/-	62.612
V	1.000	+/-	74.947
Ti	3637.398	+/-	393.387
Ca	51758.570	+/-	497.689
K	659.234	+/-	131.152
Al	4883.194	+/-	756.323
P	706.231	+/-	101.270
Si	15558.973	+/-	465.141
Cl	722.726	+/-	24.900
S	15373.355	+/-	149.713
Mg	1.000	+/-	6644.654