

mRFA -Ergebnisse

XL3t-69288

Reading No 1
 Mode Mining
 Time 2018-06-21 11:34
 Duration 120.98
 Units ppm
 Sigma Value 2
 Sequence Final
 Flags
 INV NR Gm1634
 OBJEKT TAFELGEMAELEN
 MATERIAL HOLZ METALL FASSUNG
 ANALYSESTELLE P1 TUCH PUTTO
 MESSAUFBAU STATIV
 FILTER m30lo30hi30li30
 User Login Raquet



	ppm	+/-	Error
Ce	-339.000	+/-	69.193
La	1.000	+/-	31.830
Ba	1.000	+/-	34.233
Sb	1.000	+/-	13.568
Sn	186.687	+/-	9.896
Cd	24.019	+/-	5.271
Ag	7.590	+/-	3.307
Bal	866042.500	+/-	706.037
Nb	16.902	+/-	7.158
Zr	1.000	+/-	27.201
Y	1.000	+/-	5.900
Sr	131.100	+/-	4.124
Rb	1.000	+/-	14.880
Th	1.000	+/-	377.512
Bi	1.000	+/-	397.595
Au	621.142	+/-	25.697
As	2445.844	+/-	70.098
Se	1.000	+/-	7.914
Pb	8950.019	+/-	103.511
Hg	1.000	+/-	7.479
Zn	168.306	+/-	12.116
Cu	238.170	+/-	17.360
Ni	1.000	+/-	21.818
Co	1.000	+/-	19.942
Fe	966.076	+/-	56.612
Mn	1.000	+/-	50.142
Cr	53.508	+/-	17.980
V	1.000	+/-	30.758
Ti	1.000	+/-	188.816
Ca	84194.172	+/-	817.427
K	331.912	+/-	110.977
Al	1213.785	+/-	621.545
P	8591.629	+/-	209.623
Si	6545.500	+/-	413.357
Cl	1406.975	+/-	38.493
S	17864.170	+/-	214.510
Mg	1.000	+/-	7527.572

mRFA -Ergebnisse

XL3t-69288

Reading No 2
 Mode Mining
 Time 2018-06-21 11:38
 Duration 122.23
 Units ppm
 Sigma Value 2
 Sequence Final
 Flags
 INV NR Gm1634
 OBJEKT TAFELGEMAELEN
 MATERIAL HOLZ METALL FASSUNG
 ANALYSESTELLE P2 VORHANG
 MESSAUFBAU STATIV
 FILTER m30lo30hi30li30
 User Login Raquet

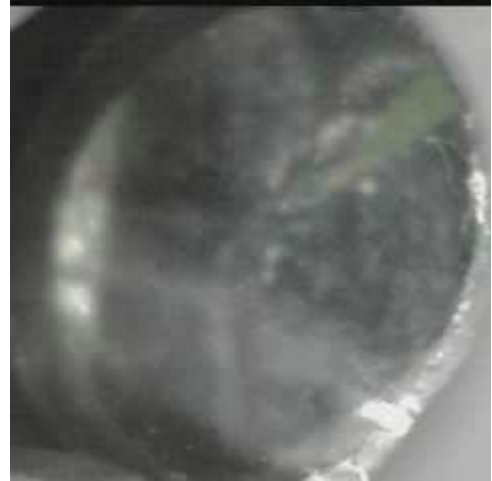


	ppm	+/-	Error
Ce	-339.000	+/-	91.474
La	1.000	+/-	41.851
Ba	1.000	+/-	44.973
Sb	1.000	+/-	25.617
Sn	36.596	+/-	8.908
Cd	8.463	+/-	6.058
Ag	5.048	+/-	4.005
Bal	914144.750	+/-	585.755
Nb	20.574	+/-	11.599
Zr	1.000	+/-	40.940
Y	1.000	+/-	9.764
Sr	43.800	+/-	5.666
Rb	1.000	+/-	18.691
Th	1.000	+/-	586.993
Bi	1.000	+/-	571.346
Au	1.000	+/-	33.369
As	3890.089	+/-	110.651
Se	11.063	+/-	10.183
Pb	14788.841	+/-	205.175
Hg	2654.218	+/-	46.206
Zn	249.370	+/-	21.267
Cu	1598.313	+/-	47.932
Ni	1.000	+/-	27.891
Co	1.000	+/-	28.437
Fe	1336.701	+/-	76.476
Mn	1.000	+/-	60.200
Cr	1.000	+/-	20.051
V	1.000	+/-	20.359
Ti	1.000	+/-	93.252
Ca	23713.379	+/-	361.008
K	3217.709	+/-	145.235
Al	1763.180	+/-	415.543
P	1101.446	+/-	85.427
Si	18338.031	+/-	484.322
Cl	1455.810	+/-	34.057
S	11622.613	+/-	179.211
Mg	1.000	+/-	4086.078

mRFA -Ergebnisse

XL3t-69288

Reading No 3
 Mode Mining
 Time 2018-06-21 11:42
 Duration 120.44
 Units ppm
 Sigma Value 2
 Sequence Final
 Flags
 INV NR Gm1634
 OBJEKT TAFELGEMAELEN
 MATERIAL HOLZ METALL FASSUNG
 ANALYSESTELLE P3 BAUM
 MESSAUFBAU STATIV
 FILTER m30lo30hi30li30
 User Login Raquet



	ppm	+/-	Error
Ce	-339.000	+/-	231.003
La	1.000	+/-	104.915
Ba	1.000	+/-	110.962
Sb	1.000	+/-	35.607
Sn	297.078	+/-	27.640
Cd	1.000	+/-	12.354
Ag	1.000	+/-	8.000
Bal	805602.625	+/-	2577.146
Nb	142.249	+/-	57.524
Zr	1.000	+/-	178.902
Y	1.000	+/-	46.935
Sr	20.812	+/-	10.903
Rb	1.000	+/-	92.767
Th	1.000	+/-	2381.975
Bi	1.000	+/-	2110.225
Au	1.000	+/-	53.545
As	9426.539	+/-	399.114
Se	1.000	+/-	26.081
Pb	81617.586	+/-	1718.199
Hg	1.000	+/-	31.320
Zn	298.311	+/-	48.716
Cu	60205.676	+/-	1071.591
Ni	1.000	+/-	49.362
Co	38.848	+/-	38.419
Fe	137.037	+/-	66.990
Mn	140.928	+/-	88.711
Cr	1.000	+/-	27.791
V	1.000	+/-	25.538
Ti	1.000	+/-	116.007
Ca	11379.521	+/-	286.702
K	341.728	+/-	137.419
Al	1757.652	+/-	687.796
P	1093.634	+/-	113.474
Si	6015.456	+/-	343.128
Cl	1376.985	+/-	45.294
S	20107.295	+/-	416.618
Mg	1.000	+/-	7445.097

mRFA -Ergebnisse

XL3t-69288

Reading No 4
 Mode Mining
 Time 2018-06-21 11:46
 Duration 121.34
 Units ppm
 Sigma Value 2
 Sequence Final
 Flags
 INV NR Gm1634
 OBJEKT TAFELGEMAELEN
 MATERIAL HOLZ METALL FASSUNG
 ANALYSESTELLE P4 RAND
 MESSAUFBAU STATIV
 FILTER m30lo30hi30li30
 User Login Raquet



	ppm	+/-	Error
Ce	-339.000	+/-	125.732
La	1.000	+/-	57.433
Ba	1.000	+/-	61.173
Sb	22.979	+/-	21.644
Sn	61.480	+/-	12.660
Cd	18.029	+/-	8.439
Ag	1.000	+/-	6.532
Bal	908383.000	+/-	783.205
Nb	59.872	+/-	23.386
Zr	1.000	+/-	77.123
Y	1.000	+/-	19.347
Sr	115.222	+/-	6.800
Rb	1.000	+/-	38.242
Th	1.000	+/-	1066.779
Bi	1.000	+/-	995.671
Au	1.000	+/-	25.571
As	8560.544	+/-	215.218
Se	18.005	+/-	13.544
Pb	36299.848	+/-	568.729
Hg	1.000	+/-	15.514
Zn	646.820	+/-	27.978
Cu	2176.071	+/-	65.017
Ni	1.000	+/-	33.251
Co	35.960	+/-	29.348
Fe	484.784	+/-	62.712
Mn	1.000	+/-	88.922
Cr	62.603	+/-	23.554
V	1.000	+/-	27.991
Ti	1.000	+/-	132.104
Ca	16545.818	+/-	325.829
K	1722.641	+/-	145.701
Al	630.258	+/-	481.646
P	944.999	+/-	101.500
Si	5231.866	+/-	306.258
Cl	1174.109	+/-	37.485
S	16805.025	+/-	308.845
Mg	1.000	+/-	4736.408

mRFA -Ergebnisse

XL3t-69288

Reading No 5
 Mode Mining
 Time 2018-06-21 11:49
 Duration 121.28
 Units ppm
 Sigma Value 2
 Sequence Final
 Flags
 INV NR Gm1634
 OBJEKT TAFELGEMAELEN
 MATERIAL HOLZ METALL FASSUNG
 ANALYSESTELLE P5 AERMEL
 MESSAUFBAU STATIV
 FILTER m30lo30hi30li30
 User Login Raquet

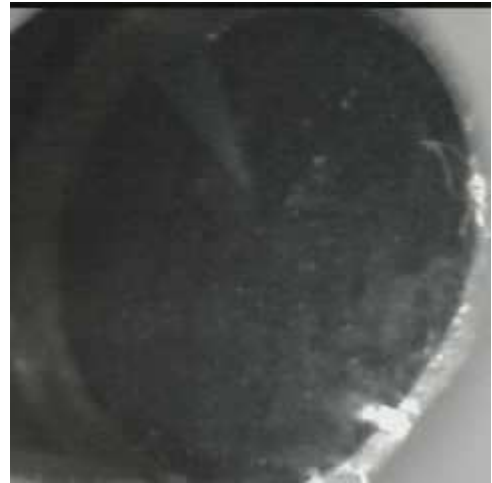


	ppm	+/-	Error
Ce	-339.000	+/-	110.571
La	1.000	+/-	50.402
Ba	1.000	+/-	53.833
Sb	1.000	+/-	24.680
Sn	582.780	+/-	20.889
Cd	17.477	+/-	7.421
Ag	1.000	+/-	5.893
Bal	920981.688	+/-	657.757
Nb	51.903	+/-	22.282
Zr	1.000	+/-	73.704
Y	1.000	+/-	18.297
Sr	75.938	+/-	5.823
Rb	1.000	+/-	36.218
Th	1.000	+/-	1017.722
Bi	1.000	+/-	882.168
Au	1.000	+/-	24.460
As	7582.087	+/-	197.374
Se	1.000	+/-	16.938
Pb	34166.586	+/-	523.185
Hg	1.000	+/-	14.716
Zn	131.452	+/-	12.440
Cu	65.811	+/-	17.431
Ni	1.000	+/-	31.049
Co	25.861	+/-	25.471
Fe	1.000	+/-	61.244
Mn	1.000	+/-	83.598
Cr	1.000	+/-	20.939
V	1.000	+/-	14.245
Ti	1.000	+/-	75.875
Ca	5338.456	+/-	154.708
K	189.924	+/-	102.363
Al	648.169	+/-	388.851
P	931.501	+/-	93.443
Si	8629.201	+/-	342.358
Cl	1190.000	+/-	34.009
S	19391.133	+/-	350.878
Mg	1.000	+/-	4252.474

mRFA -Ergebnisse

XL3t-69288

Reading No 6
 Mode Mining
 Time 2018-06-21 11:53
 Duration 121.95
 Units ppm
 Sigma Value 2
 Sequence Final
 Flags
 INV NR Gm1634
 OBJEKT TAFELGEMAELEN
 MATERIAL HOLZ METALL FASSUNG
 ANALYSESTELLE P6 MANTEL
 MESSAUFBAU STATIV
 FILTER m30lo30hi30li30
 User Login Raquet



	ppm	+/-	Error
Ce	-339.000	+/-	110.237
La	1.000	+/-	50.635
Ba	1.000	+/-	53.918
Sb	1.000	+/-	22.945
Sn	40.816	+/-	10.605
Cd	15.819	+/-	7.371
Ag	1.000	+/-	5.815
Bal	840244.500	+/-	1398.245
Nb	1.000	+/-	26.269
Zr	1.000	+/-	65.396
Y	1.000	+/-	16.101
Sr	48.070	+/-	5.455
Rb	1.000	+/-	29.455
Th	1.000	+/-	934.094
Bi	1.000	+/-	881.684
Au	1.000	+/-	23.771
As	2663.474	+/-	155.812
Se	1.000	+/-	15.878
Pb	19429.613	+/-	338.649
Hg	1.000	+/-	14.644
Zn	328.275	+/-	47.009
Cu	101751.281	+/-	1325.046
Ni	1.000	+/-	32.753
Co	1.000	+/-	26.368
Fe	355.909	+/-	48.533
Mn	1.000	+/-	53.325
Cr	1.000	+/-	19.714
V	1.000	+/-	18.478
Ti	1.000	+/-	124.518
Ca	20972.557	+/-	328.406
K	424.627	+/-	102.992
Al	561.677	+/-	402.411
P	550.587	+/-	60.680
Si	4531.802	+/-	221.458
Cl	848.201	+/-	23.372
S	7232.816	+/-	112.455
Mg	1.000	+/-	4716.963