

mRFA -Ergebnisse

XL3t-69288

Reading No 1
Mode Mining
Time 2019-10-31 11:25
Duration 121.06
Units ppm
Sigma Value 2
Sequence Final
Flags
INV NR Gm39
OBJEKT TAFELGEMAELENDE
MATERIAL HOLZ METALL FASSUNG
ANALYSESTELLE P1 NIMBUS
MESSAUFBAU STATIV
FILTER m30lo30hi30li30
User Login Raquet



Ele	ppm	+/-	$\pm 2\sigma$
Ce	-339.000	+/-	91.332
La	1.000	+/-	42.041
Ba	1.000	+/-	44.856
Sb	1.000	+/-	23.440
Sn	40.138	+/-	10.726
Cd	16.270	+/-	6.501
Ag	309.075	+/-	12.246
Bal	925279.938	+/-	486.374
Nb	38.025	+/-	10.413
Zr	1.000	+/-	57.235
Y	1.000	+/-	8.873
Sr	29.336	+/-	3.007
Rb	1.000	+/-	16.668
Th	1.000	+/-	528.384
Bi	1.000	+/-	665.816
Au	229.003	+/-	23.697
As	3486.154	+/-	103.430
Se	20.656	+/-	14.754
Pb	14575.515	+/-	198.278
Hg	1.000	+/-	8.303
Zn	792.124	+/-	27.879
Cu	6421.962	+/-	118.218
Ni	1.000	+/-	25.270
Co	1.000	+/-	38.849
Fe	5217.065	+/-	138.444
Mn	128.548	+/-	56.619
Cr	1.000	+/-	19.396
V	22.407	+/-	15.232
Ti	1.000	+/-	101.990
Ca	18419.010	+/-	297.570
K	1289.900	+/-	141.986
Al	644.054	+/-	454.377
P	3533.960	+/-	126.700
Si	5491.835	+/-	311.322
Cl	1328.922	+/-	36.187
S	12686.057	+/-	197.603
Mg	1.000	+/-	9289.210

mRFA -Ergebnisse

XL3t-69288

Reading No 3
Mode Mining
Time 2019-10-31 11:43
Duration 120.82
Units ppm
Sigma Value 2
Sequence Final
Flags
INV NR Gm39
OBJEKT TAFELGEMAELEN
MATERIAL METALL FASSUNG LEINWAND
ANALYSESTELLE P2 NIMBUS
MESSAUFBAU STATIV
FILTER m30lo30hi30li30
User Login Raquet



Ele	ppm	+/-	$\pm 2\sigma$
Ce	-339.000	+/-	93.825
La	1.000	+/-	43.230
Ba	1.000	+/-	46.575
Sb	1.000	+/-	24.809
Sn	102.765	+/-	11.261
Cd	13.530	+/-	6.559
Ag	54.694	+/-	6.265
Bal	885043.188	+/-	744.780
Nb	19.769	+/-	8.375
Zr	62.788	+/-	30.738
Y	1.000	+/-	7.363
Sr	223.955	+/-	6.426
Rb	112.367	+/-	14.263
Th	1.000	+/-	437.484
Bi	1.000	+/-	448.226
Au	1.000	+/-	12.152
As	1031.133	+/-	73.143
Se	1.000	+/-	10.266
Pb	7871.024	+/-	108.326
Hg	1.000	+/-	6.526
Zn	4771.104	+/-	78.343
Cu	33944.020	+/-	394.563
Ni	1.000	+/-	27.587
Co	1.000	+/-	38.364
Fe	4991.811	+/-	121.754
Mn	490.618	+/-	67.469
Cr	1.000	+/-	30.297
V	44.806	+/-	21.957
Ti	149.713	+/-	116.789
Ca	5839.348	+/-	131.510
K	3718.421	+/-	165.807
Al	9076.720	+/-	736.842
P	913.088	+/-	96.973
Si	24864.283	+/-	576.323
Cl	1902.916	+/-	40.053
S	14757.981	+/-	184.541
Mg	1.000	+/-	5445.718

mRFA -Ergebnisse

XL3t-69288

Reading No 4
Mode Mining
Time 2019-10-31 11:47
Duration 121.10
Units ppm
Sigma Value 2
Sequence Final
Flags
INV NR Gm39
OBJEKT TAFELGEMAELEN
MATERIAL METALL FASSUNG LEINWAND
ANALYSESTELLE P3 KRONE
MESSAUFBAU STATIV
FILTER m30lo30hi30li30
User Login Raquet



Ele	ppm	+/-	$\pm 2\sigma$
Ce	-339.000	+/-	93.133
La	1.000	+/-	42.669
Ba	1.000	+/-	45.671
Sb	1.000	+/-	22.875
Sn	164.760	+/-	14.747
Cd	21.627	+/-	6.800
Ag	595.023	+/-	17.959
Bal	850820.250	+/-	1078.367
Nb	59.254	+/-	17.241
Zr	1.000	+/-	71.936
Y	1.000	+/-	14.709
Sr	50.557	+/-	4.559
Rb	1.000	+/-	29.372
Th	1.000	+/-	830.716
Bi	1.000	+/-	942.143
Au	355.334	+/-	35.050
As	6625.312	+/-	171.435
Se	27.983	+/-	19.988
Pb	26854.055	+/-	406.956
Hg	1.000	+/-	12.789
Zn	199.088	+/-	16.535
Cu	2587.342	+/-	69.979
Ni	1.000	+/-	31.055
Co	1.000	+/-	52.880
Fe	7513.720	+/-	197.512
Mn	263.483	+/-	69.247
Cr	33.587	+/-	25.651
V	1.000	+/-	34.214
Ti	1.000	+/-	172.978
Ca	33003.516	+/-	546.851
K	3300.275	+/-	223.372
Al	4165.591	+/-	812.106
P	7869.305	+/-	234.803
Si	24283.084	+/-	742.693
Cl	3467.290	+/-	75.765
S	27739.547	+/-	456.701
Mg	1.000	+/-	7791.495

mRFA -Ergebnisse

XL3t-69288

Reading No 5
Mode Mining
Time 2019-10-31 11:54
Duration 121.12
Units ppm
Sigma Value 2
Sequence Final
Flags
INV NR Gm39
OBJEKT TAFELGEMAELEN
MATERIAL METALL FASSUNG LEINWAND
ANALYSESTELLE P4 KUGEL VORTRAGEKREUZ
MESSAUFBAU STATIV
FILTER m30lo30hi30li30
User Login Raquet



Ele	ppm	+/-	$\pm 2\sigma$
Ce	-339.000	+/-	91.607
La	1.000	+/-	41.953
Ba	1.000	+/-	44.989
Sb	17.449	+/-	16.289
Sn	836.216	+/-	24.494
Cd	28.448	+/-	7.102
Ag	29.795	+/-	5.341
Bal	863509.625	+/-	941.157
Nb	54.746	+/-	14.664
Zr	1.000	+/-	62.578
Y	1.000	+/-	12.520
Sr	46.429	+/-	4.084
Rb	1.000	+/-	28.340
Th	1.000	+/-	721.725
Bi	1.000	+/-	773.373
Au	817.886	+/-	39.770
As	5282.692	+/-	143.352
Se	22.491	+/-	16.065
Pb	21846.342	+/-	313.532
Hg	1.000	+/-	11.072
Zn	168.219	+/-	16.515
Cu	4188.562	+/-	92.750
Ni	1.000	+/-	30.519
Co	1.000	+/-	43.957
Fe	5462.677	+/-	155.424
Mn	123.472	+/-	62.415
Cr	51.176	+/-	25.849
V	1.000	+/-	28.204
Ti	1.000	+/-	180.635
Ca	39792.234	+/-	597.282
K	3853.034	+/-	200.242
Al	3028.236	+/-	771.572
P	8640.360	+/-	237.383
Si	17882.719	+/-	639.993
Cl	2472.984	+/-	59.261
S	21844.238	+/-	340.483
Mg	1.000	+/-	9365.297

mRFA -Ergebnisse

XL3t-69288

Reading No 6
Mode Mining
Time 2019-10-31 11:58
Duration 122.21
Units ppm
Sigma Value 2
Sequence Final
Flags
INV NR Gm39
OBJEKT TAFELGEMAELEN
MATERIAL METALL FASSUNG LEINWAND
ANALYSESTELLE P5 ROTER FARBLACK BORTE
MESSAUFBAU STATIV
FILTER m30lo30hi30li30
User Login Raquet



Ele	ppm	+/-	$\pm 2\sigma$
Ce	-339.000	+/-	89.302
La	1.000	+/-	40.867
Ba	1.000	+/-	44.194
Sb	1.000	+/-	24.200
Sn	41.105	+/-	13.577
Cd	18.470	+/-	6.650
Ag	908.127	+/-	22.509
Bal	839420.500	+/-	991.106
Nb	40.754	+/-	11.351
Zr	1.000	+/-	57.362
Y	1.000	+/-	9.729
Sr	61.944	+/-	3.835
Rb	1.000	+/-	25.222
Th	1.000	+/-	576.641
Bi	1.000	+/-	664.826
Au	466.380	+/-	29.545
As	4110.055	+/-	112.779
Se	12.530	+/-	10.398
Pb	16010.387	+/-	216.722
Hg	1.000	+/-	9.449
Zn	165.652	+/-	14.262
Cu	1949.722	+/-	52.883
Ni	1.000	+/-	27.902
Co	1.000	+/-	49.767
Fe	8431.946	+/-	190.988
Mn	757.928	+/-	78.285
Cr	35.294	+/-	27.399
V	1.000	+/-	25.253
Ti	1.000	+/-	187.891
Ca	50174.898	+/-	676.880
K	6465.178	+/-	264.296
Al	6714.056	+/-	828.895
P	1963.695	+/-	134.800
Si	43662.266	+/-	925.171
Cl	2790.226	+/-	57.964
S	15798.878	+/-	232.436
Mg	1.000	+/-	6374.435

mRFA -Ergebnisse

XL3t-69288

Reading No 7
Mode Mining
Time 2019-10-31 12:05
Duration 121.50
Units ppm
Sigma Value 2
Sequence Final
Flags
INV NR Gm39
OBJEKT TAFELGEMAELEN
MATERIAL METALL FASSUNG LEINWAND
ANALYSESTELLE P6 BORTE
MESSAUFBAU STATIV
FILTER m30lo30hi30li30
User Login Raquet



Ele	ppm	+/-	$\pm 2\sigma$
Ce	-339.000	+/-	93.587
La	1.000	+/-	42.836
Ba	1.000	+/-	46.167
Sb	1.000	+/-	27.104
Sn	64.769	+/-	13.538
Cd	18.103	+/-	6.907
Ag	611.248	+/-	19.204
Bal	847975.563	+/-	968.893
Nb	39.326	+/-	11.219
Zr	1.000	+/-	55.742
Y	1.000	+/-	9.618
Sr	56.971	+/-	3.713
Rb	1.000	+/-	23.426
Th	1.000	+/-	571.012
Bi	1.000	+/-	649.968
Au	388.660	+/-	28.126
As	4090.325	+/-	111.777
Se	10.969	+/-	10.366
Pb	15300.169	+/-	207.074
Hg	1.000	+/-	9.032
Zn	233.058	+/-	16.180
Cu	2260.893	+/-	58.192
Ni	1.000	+/-	27.824
Co	1.000	+/-	57.658
Fe	12604.819	+/-	248.093
Mn	249.225	+/-	63.798
Cr	34.985	+/-	28.013
V	1.000	+/-	31.366
Ti	149.011	+/-	127.735
Ca	44314.113	+/-	608.844
K	3827.890	+/-	240.737
Al	3309.495	+/-	818.538
P	7682.922	+/-	215.874
Si	18540.486	+/-	629.742
Cl	2611.472	+/-	58.938
S	20905.984	+/-	298.782
Mg	14719.543	+/-	8933.741

mRFA -Ergebnisse

XL3t-69288

Reading No 8
Mode Mining
Time 2019-10-31 12:09
Duration 121.66
Units ppm
Sigma Value 2
Sequence Final
Flags
INV NR Gm39
OBJEKT TAFELGEMAELEN
MATERIAL METALL FASSUNG LEINWAND
ANALYSESTELLE P7 ROTER HUT
MESSAUFBAU STATIV
FILTER m30lo30hi30li30
User Login Raquet



Ele	ppm	+/-	$\pm 2\sigma$
Ce	-339.000	+/-	224.522
La	1.000	+/-	101.940
Ba	1.000	+/-	107.013
Sb	1.000	+/-	37.548
Sn	34.335	+/-	19.822
Cd	34.068	+/-	14.671
Ag	35.494	+/-	10.892
Bal	754426.813	+/-	3599.564
Nb	227.128	+/-	80.048
Zr	1.000	+/-	229.671
Y	1.000	+/-	63.318
Sr	1.000	+/-	20.596
Rb	1.000	+/-	130.369
Th	1.000	+/-	2940.918
Bi	1.000	+/-	2256.751
Au	1.000	+/-	64.520
As	18064.254	+/-	544.765
Se	44.142	+/-	31.530
Pb	119072.961	+/-	2570.950
Hg	1.000	+/-	37.273
Zn	176.250	+/-	20.612
Cu	477.381	+/-	43.947
Ni	91.540	+/-	57.608
Co	104.018	+/-	48.587
Fe	581.030	+/-	101.809
Mn	317.691	+/-	110.038
Cr	1.000	+/-	48.419
V	1.000	+/-	28.905
Ti	1.000	+/-	147.329
Ca	20583.691	+/-	499.542
K	3484.374	+/-	247.541
Al	6149.832	+/-	1077.992
P	2810.408	+/-	189.829
Si	27824.588	+/-	887.305
Cl	4274.776	+/-	114.818
S	41185.188	+/-	891.156
Mg	1.000	+/-	16924.264

mRFA -Ergebnisse

XL3t-69288

Reading No 9
Mode Mining
Time 2019-10-31 12:14
Duration 121.57
Units ppm
Sigma Value 2
Sequence Final
Flags
INV NR Gm39
OBJEKT TAFELGEMAELEN
MATERIAL METALL FASSUNG LEINWAND
ANALYSESTELLE P8 GEWAND URSULA PRESSBROKAT
MESSAUFBAU STATIV
FILTER m30lo30hi30li30
User Login Raquet

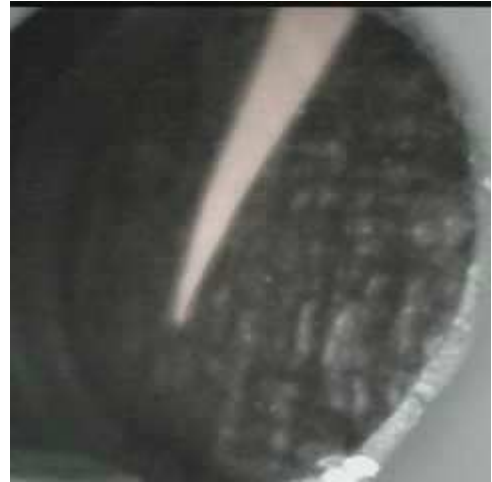


Ele	ppm	+/-	$\pm 2\sigma$
Ce	-339.000	+/-	118.658
La	1.000	+/-	54.237
Ba	1.000	+/-	57.769
Sb	1.000	+/-	20.154
Sn	13048.274	+/-	163.826
Cd	135.078	+/-	11.517
Ag	248.980	+/-	11.074
Bal	929394.938	+/-	569.026
Nb	20.235	+/-	11.883
Zr	1.000	+/-	50.211
Y	1.000	+/-	10.309
Sr	16.893	+/-	3.311
Rb	1.000	+/-	18.979
Th	1.000	+/-	606.415
Bi	1.000	+/-	642.907
Au	185.714	+/-	24.351
As	1569.890	+/-	102.819
Se	1.000	+/-	13.124
Pb	13608.521	+/-	206.893
Hg	1.000	+/-	9.375
Zn	58.332	+/-	12.434
Cu	1060.848	+/-	43.424
Ni	1.000	+/-	35.225
Co	1.000	+/-	36.454
Fe	2309.285	+/-	109.098
Mn	1.000	+/-	83.955
Cr	47.509	+/-	18.788
V	1.000	+/-	19.096
Ti	1.000	+/-	91.993
Ca	17048.100	+/-	381.615
K	2318.943	+/-	233.590
Al	1944.420	+/-	513.526
P	679.526	+/-	89.360
Si	6966.045	+/-	349.171
Cl	935.680	+/-	34.372
S	8402.801	+/-	157.192
Mg	1.000	+/-	4754.064

mRFA -Ergebnisse

XL3t-69288

Reading No 10
Mode Mining
Time 2019-10-31 12:18
Duration 120.40
Units ppm
Sigma Value 2
Sequence Final
Flags
INV NR Gm39
OBJEKT TAFELGEMAELEN
MATERIAL METALL FASSUNG LEINWAND
ANALYSESTELLE P9 MANTEL PABST PRESSBROKAT
MESSAUFBAU STATIV
FILTER m30lo30hi30li30
User Login Raquet



Ele	ppm	+/-	$\pm 2\sigma$
Ce	-339.000	+/-	198.226
La	1.000	+/-	90.759
Ba	1.000	+/-	95.642
Sb	1.000	+/-	28.327
Sn	31170.211	+/-	472.133
Cd	186.774	+/-	19.285
Ag	393.021	+/-	18.531
Bal	884243.688	+/-	1161.536
Nb	30.723	+/-	17.507
Zr	1.000	+/-	79.344
Y	1.000	+/-	15.572
Sr	39.762	+/-	5.244
Rb	1.000	+/-	30.349
Th	1.000	+/-	870.417
Bi	1.000	+/-	889.321
Au	453.556	+/-	38.627
As	1345.161	+/-	142.571
Se	1.000	+/-	18.265
Pb	19339.631	+/-	336.525
Hg	1.000	+/-	13.363
Zn	78.081	+/-	17.559
Cu	1340.892	+/-	59.542
Ni	1.000	+/-	52.496
Co	1.000	+/-	46.913
Fe	2303.379	+/-	132.445
Mn	1.000	+/-	108.077
Cr	71.810	+/-	29.751
V	1.000	+/-	27.363
Ti	1.000	+/-	122.177
Ca	31422.965	+/-	731.861
K	2586.706	+/-	405.497
Al	1292.284	+/-	852.518
P	1907.207	+/-	157.101
Si	8901.814	+/-	529.845
Cl	1684.889	+/-	61.161
S	11207.439	+/-	237.597
Mg	1.000	+/-	9159.901

mRFA -Ergebnisse

XL3t-69288

Reading No 11
Mode Mining
Time 2019-10-31 12:24
Duration 120.33
Units ppm
Sigma Value 2
Sequence Final
Flags
INV NR Gm39
OBJEKT TAFELGEMAELEN
MATERIAL METALL FASSUNG LEINWAND
ANALYSESTELLE P10 MANTELSCHLIESSE
MESSAUFBAU STATIV
FILTER m30lo30hi30li30
User Login Raquet



Ele	ppm	+/-	$\pm 2\sigma$
Ce	-339.000	+/-	83.940
La	1.000	+/-	38.206
Ba	1.000	+/-	41.252
Sb	1.000	+/-	19.678
Sn	1913.931	+/-	33.174
Cd	37.612	+/-	6.779
Ag	16.206	+/-	4.238
Bal	900658.563	+/-	623.027
Nb	23.392	+/-	9.783
Zr	1.000	+/-	37.676
Y	1.000	+/-	8.103
Sr	42.386	+/-	3.141
Rb	1.000	+/-	21.874
Th	1.000	+/-	503.113
Bi	1.000	+/-	503.361
Au	908.058	+/-	33.856
As	3098.736	+/-	92.434
Se	1.000	+/-	12.070
Pb	12575.468	+/-	162.090
Hg	1.000	+/-	7.579
Zn	101.255	+/-	12.081
Cu	1323.636	+/-	40.352
Ni	1.000	+/-	25.519
Co	1.000	+/-	37.584
Fe	4800.020	+/-	130.410
Mn	73.993	+/-	57.950
Cr	47.942	+/-	17.193
V	1.000	+/-	22.366
Ti	1.000	+/-	102.453
Ca	28296.912	+/-	415.063
K	2365.213	+/-	169.787
Al	1204.585	+/-	520.744
P	7687.137	+/-	187.499
Si	13099.896	+/-	475.548
Cl	1470.512	+/-	38.386
S	14363.004	+/-	209.860
Mg	5891.453	+/-	5872.482

mRFA -Ergebnisse

XL3t-69288

Reading No 12
Mode Mining
Time 2019-10-31 12:27
Duration 120.69
Units ppm
Sigma Value 2
Sequence Final
Flags
INV NR Gm39
OBJEKT TAFELGEMAELEN
MATERIAL METALL FASSUNG LEINWAND
ANALYSESTELLE P11 PRESSBROKAT
MESSAUFBAU STATIV
FILTER m30lo30hi30li30
User Login Raquet

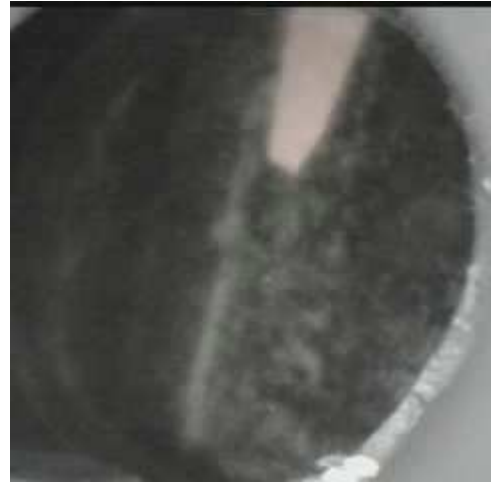


Ele	ppm	+/-	$\pm 2\sigma$
Ce	-339.000	+/-	126.035
La	1.000	+/-	57.294
Ba	1.000	+/-	61.318
Sb	1.000	+/-	19.610
Sn	13645.324	+/-	173.584
Cd	132.624	+/-	12.232
Ag	24.894	+/-	5.971
Bal	921083.813	+/-	629.266
Nb	14.887	+/-	11.257
Zr	1.000	+/-	40.942
Y	1.000	+/-	9.768
Sr	28.346	+/-	3.527
Rb	1.000	+/-	21.379
Th	1.000	+/-	578.975
Bi	1.000	+/-	496.819
Au	1.000	+/-	15.187
As	1101.187	+/-	96.336
Se	1.000	+/-	10.506
Pb	12007.158	+/-	180.301
Hg	1.000	+/-	8.308
Zn	69.240	+/-	12.411
Cu	682.408	+/-	35.726
Ni	1.000	+/-	36.521
Co	1.000	+/-	32.265
Fe	883.761	+/-	77.233
Mn	147.558	+/-	83.373
Cr	63.113	+/-	17.550
V	1.000	+/-	14.518
Ti	1.000	+/-	76.515
Ca	16713.264	+/-	498.339
K	2922.612	+/-	359.998
Al	868.445	+/-	742.991
P	1.000	+/-	125.664
Si	20120.674	+/-	744.642
Cl	864.883	+/-	48.361
S	8625.768	+/-	171.822
Mg	1.000	+/-	11326.616

mRFA -Ergebnisse

XL3t-69288

Reading No 13
Mode Mining
Time 2019-10-31 12:32
Duration 121.70
Units ppm
Sigma Value 2
Sequence Final
Flags
INV NR Gm39
OBJEKT TAFELGEMAELEN
MATERIAL METALL FASSUNG LEINWAND
ANALYSESTELLE P12 KREUZSTAB
MESSAUFBAU STATIV
FILTER m30lo30hi30li30
User Login Raquet



Ele	ppm	+/-	$\pm 2\sigma$
Ce	-339.000	+/-	94.765
La	1.000	+/-	43.748
Ba	1.000	+/-	46.702
Sb	1.000	+/-	16.089
Sn	28.478	+/-	13.713
Cd	20.109	+/-	7.042
Ag	849.070	+/-	22.826
Bal	889175.750	+/-	753.522
Nb	48.353	+/-	13.463
Zr	1.000	+/-	61.982
Y	1.000	+/-	11.478
Sr	50.889	+/-	3.909
Rb	1.000	+/-	26.559
Th	1.000	+/-	668.472
Bi	1.000	+/-	769.432
Au	1.000	+/-	17.087
As	5174.583	+/-	134.899
Se	14.872	+/-	10.812
Pb	19690.514	+/-	278.417
Hg	1.000	+/-	10.251
Zn	186.567	+/-	14.254
Cu	1601.498	+/-	49.228
Ni	1.000	+/-	29.245
Co	1.000	+/-	50.306
Fe	7837.479	+/-	191.650
Mn	212.702	+/-	63.756
Cr	34.762	+/-	27.866
V	1.000	+/-	34.267
Ti	1.000	+/-	189.866
Ca	35418.688	+/-	550.884
K	4236.227	+/-	251.965
Al	1322.295	+/-	660.964
P	966.681	+/-	123.457
Si	13179.590	+/-	521.867
Cl	3555.346	+/-	73.545
S	16395.611	+/-	266.662
Mg	1.000	+/-	7067.974

mRFA -Ergebnisse

XL3t-69288

Reading No 14
Mode Mining
Time 2019-10-31 12:38
Duration 121.63
Units ppm
Sigma Value 2
Sequence Final
Flags
INV NR Gm39
OBJEKT TAFELGEMAELEN
MATERIAL METALL FASSUNG LEINWAND
ANALYSESTELLE P13 KREUZSTAB
MESSAUFBAU STATIV
FILTER m30lo30hi30li30
User Login Raquet

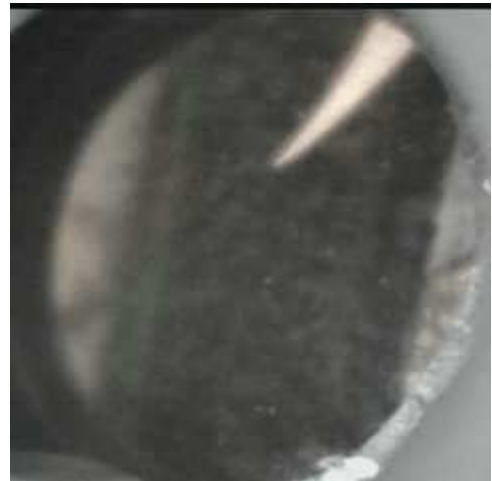


Ele	ppm	+/-	$\pm 2\sigma$
Ce	-339.000	+/-	100.646
La	1.000	+/-	45.799
Ba	1.000	+/-	49.433
Sb	24.881	+/-	18.033
Sn	362.492	+/-	20.006
Cd	24.636	+/-	7.564
Ag	630.772	+/-	20.047
Bal	873636.000	+/-	872.175
Nb	44.708	+/-	14.349
Zr	1.000	+/-	49.990
Y	1.000	+/-	12.212
Sr	43.140	+/-	3.959
Rb	1.000	+/-	30.927
Th	1.000	+/-	709.627
Bi	1.000	+/-	680.853
Au	353.777	+/-	31.287
As	5038.672	+/-	138.072
Se	1.000	+/-	14.755
Pb	20625.938	+/-	290.366
Hg	1.000	+/-	10.917
Zn	164.788	+/-	14.859
Cu	1687.223	+/-	51.695
Ni	1.000	+/-	30.106
Co	1.000	+/-	58.227
Fe	11089.979	+/-	240.990
Mn	341.870	+/-	71.588
Cr	53.284	+/-	27.451
V	31.275	+/-	21.454
Ti	124.492	+/-	115.076
Ca	28535.838	+/-	462.179
K	2876.262	+/-	226.541
Al	2612.655	+/-	733.221
P	5934.872	+/-	196.945
Si	18562.965	+/-	622.413
Cl	3247.459	+/-	68.816
S	23952.010	+/-	363.421
Mg	1.000	+/-	7374.743

mRFA -Ergebnisse

XL3t-69288

Reading No 15
Mode Mining
Time 2019-10-31 12:42
Duration 122.67
Units ppm
Sigma Value 2
Sequence Final
Flags
INV NR Gm39
OBJEKT TAFELGEMAELEN
MATERIAL METALL FASSUNG LEINWAND
ANALYSESTELLE P14 KREUZSTAB
MESSAUFBAU STATIV
FILTER m30lo30hi30li30
User Login Raquet



Ele	ppm	+/-	$\pm 2\sigma$
Ce	-339.000	+/-	111.260
La	1.000	+/-	51.217
Ba	1.000	+/-	55.444
Sb	1.000	+/-	29.013
Sn	48.655	+/-	14.587
Cd	20.217	+/-	8.107
Ag	524.053	+/-	19.808
Bal	848620.688	+/-	1101.414
Nb	62.899	+/-	18.436
Zr	1.000	+/-	69.606
Y	1.000	+/-	15.526
Sr	46.650	+/-	4.671
Rb	1.000	+/-	31.344
Th	1.000	+/-	881.468
Bi	1.000	+/-	934.789
Au	313.039	+/-	35.063
As	6375.473	+/-	174.089
Se	19.012	+/-	13.114
Pb	28303.223	+/-	429.969
Hg	1.000	+/-	13.159
Zn	173.446	+/-	15.822
Cu	1886.726	+/-	58.498
Ni	1.000	+/-	32.387
Co	1.000	+/-	53.806
Fe	7952.073	+/-	208.152
Mn	277.433	+/-	71.557
Cr	1.000	+/-	43.964
V	1.000	+/-	33.508
Ti	143.046	+/-	127.599
Ca	33230.484	+/-	557.091
K	3736.841	+/-	234.790
Al	3232.138	+/-	768.507
P	5592.437	+/-	197.425
Si	31047.828	+/-	826.760
Cl	2795.117	+/-	65.415
S	25598.564	+/-	423.603
Mg	1.000	+/-	7238.014

mRFA -Ergebnisse

XL3t-69288

Reading No 16
Mode Mining
Time 2019-10-31 12:46
Duration 122.03
Units ppm
Sigma Value 2
Sequence Final
Flags
INV NR Gm39
OBJEKT TAFELGEMAELEN
MATERIAL METALL FASSUNG LEINWAND
ANALYSESTELLE P15 WAPPEN
MESSAUFBAU STATIV
FILTER m30lo30hi30li30
User Login Raquet



Ele	ppm	+/-	$\pm 2\sigma$
Ce	-339.000	+/-	153.605
La	1.000	+/-	70.232
Ba	1.000	+/-	74.974
Sb	1.000	+/-	26.191
Sn	80.398	+/-	20.714
Cd	1.000	+/-	13.364
Ag	897.230	+/-	32.322
Bal	813692.625	+/-	1990.040
Nb	106.451	+/-	43.415
Zr	1.000	+/-	134.547
Y	1.000	+/-	35.748
Sr	41.468	+/-	8.518
Rb	1.000	+/-	75.741
Th	1.000	+/-	1803.989
Bi	1.000	+/-	1439.635
Au	1.000	+/-	40.862
As	12754.105	+/-	352.357
Se	21.831	+/-	17.914
Pb	66410.000	+/-	1214.907
Hg	1.000	+/-	24.546
Zn	180.074	+/-	19.854
Cu	3746.628	+/-	107.355
Ni	1.000	+/-	43.807
Co	1.000	+/-	63.571
Fe	6847.375	+/-	226.094
Mn	337.098	+/-	92.653
Cr	33.536	+/-	29.851
V	26.923	+/-	25.158
Ti	1.000	+/-	132.863
Ca	15560.866	+/-	364.973
K	3720.887	+/-	270.991
Al	5449.554	+/-	920.093
P	2705.938	+/-	175.467
Si	27850.582	+/-	833.718
Cl	4510.429	+/-	106.466
S	35025.934	+/-	676.433
Mg	1.000	+/-	8609.606

mRFA -Ergebnisse

XL3t-69288

Reading No 17
Mode Mining
Time 2019-10-31 12:49
Duration 120.75
Units ppm
Sigma Value 2
Sequence Final
Flags
INV NR Gm39
OBJEKT TAFELGEMAELEN
MATERIAL METALL FASSUNG LEINWAND
ANALYSESTELLE P16 HAUBE
MESSAUFBAU STATIV
FILTER m30lo30hi30li30
User Login Raquet



Ele	ppm	+/-	$\pm 2\sigma$
Ce	-339.000	+/-	133.394
La	1.000	+/-	61.734
Ba	1.000	+/-	65.614
Sb	1.000	+/-	32.642
Sn	107.951	+/-	21.648
Cd	1.000	+/-	13.228
Ag	1418.144	+/-	38.761
Bal	826966.000	+/-	1596.173
Nb	60.785	+/-	29.484
Zr	1.000	+/-	96.606
Y	1.000	+/-	25.028
Sr	56.359	+/-	6.871
Rb	51.428	+/-	49.617
Th	1.000	+/-	1329.397
Bi	1.000	+/-	1041.224
Au	3825.305	+/-	107.397
As	10184.660	+/-	266.858
Se	1.000	+/-	26.335
Pb	43079.734	+/-	739.105
Hg	1.000	+/-	20.498
Zn	215.501	+/-	26.016
Cu	8693.009	+/-	183.200
Ni	1.000	+/-	40.089
Co	1.000	+/-	72.110
Fe	11270.878	+/-	279.318
Mn	250.249	+/-	81.619
Cr	85.683	+/-	29.727
V	1.000	+/-	29.184
Ti	1.000	+/-	202.118
Ca	16718.123	+/-	344.238
K	3689.642	+/-	222.840
Al	3309.892	+/-	799.849
P	20012.912	+/-	414.285
Si	21869.781	+/-	717.512
Cl	2662.097	+/-	65.767
S	25471.891	+/-	446.290
Mg	1.000	+/-	7447.516