

mRFA -Ergebnisse

XL3t-69288

Reading No 1
Mode Mining
Time 2019-10-31 13:00
Duration 121.39
Units ppm
Sigma Value 2
Sequence Final
Flags
INV NR Gm38
OBJEKT TAFELGEMAELEN
MATERIAL METALL FASSUNG LEINWAND
ANALYSESTELLE P1 NIMBUS
MESSAUFBAU STATIV
FILTER m30lo30hi30li30
User Login Raquet



Ele	ppm	+/-	$\pm 2\sigma$
Ce	-339.000	+/-	118.499
La	1.000	+/-	54.261
Ba	1.000	+/-	58.195
Sb	1.000	+/-	21.587
Sn	154.614	+/-	17.041
Cd	1.000	+/-	11.181
Ag	635.155	+/-	20.842
Bal	831949.625	+/-	1298.308
Nb	58.747	+/-	21.131
Zr	1.000	+/-	70.457
Y	1.000	+/-	17.705
Sr	96.119	+/-	6.196
Rb	1.000	+/-	42.903
Th	1.000	+/-	996.990
Bi	1.000	+/-	852.062
Au	350.533	+/-	38.289
As	6538.701	+/-	188.096
Se	1.000	+/-	16.514
Pb	32864.867	+/-	498.416
Hg	1.000	+/-	14.306
Zn	118.654	+/-	14.118
Cu	969.702	+/-	41.868
Ni	1.000	+/-	34.341
Co	1.000	+/-	34.367
Fe	1772.201	+/-	97.509
Mn	100.066	+/-	70.746
Cr	37.063	+/-	23.791
V	1.000	+/-	17.985
Ti	1.000	+/-	116.127
Ca	62033.188	+/-	918.728
K	2610.095	+/-	211.473
Al	3188.317	+/-	852.245
P	6075.250	+/-	210.346
Si	13499.939	+/-	567.969
Cl	2750.531	+/-	65.755
S	24831.361	+/-	399.135
Mg	9365.319	+/-	9081.652

mRFA -Ergebnisse

XL3t-69288

Reading No 2
Mode Mining
Time 2019-10-31 13:04
Duration 120.04
Units ppm
Sigma Value 2
Sequence Final
Flags
INV NR Gm38
OBJEKT TAFELGEMAELEN
MATERIAL METALL FASSUNG LEINWAND
ANALYSESTELLE P2 KLEID AMME
MESSAUFBAU STATIV
FILTER m30lo30hi30li30
User Login Raquet



Ele	ppm	+/-	$\pm 2\sigma$
Ce	-339.000	+/-	181.590
La	1.000	+/-	82.825
Ba	1.000	+/-	88.067
Sb	35.716	+/-	30.834
Sn	4787.172	+/-	125.549
Cd	35.036	+/-	13.856
Ag	28.286	+/-	9.124
Bal	750573.625	+/-	3105.680
Nb	137.515	+/-	56.181
Zr	1.000	+/-	170.136
Y	1.000	+/-	46.158
Sr	64.297	+/-	11.287
Rb	1.000	+/-	92.508
Th	1.000	+/-	2297.900
Bi	1.000	+/-	1781.423
Au	1.000	+/-	51.191
As	13944.416	+/-	430.721
Se	30.092	+/-	21.226
Pb	85554.367	+/-	1699.305
Hg	1.000	+/-	29.936
Zn	118.376	+/-	23.812
Cu	9270.777	+/-	224.232
Ni	1.000	+/-	80.837
Co	1.000	+/-	61.597
Fe	4319.658	+/-	191.814
Mn	196.907	+/-	97.380
Cr	1.000	+/-	34.924
V	1.000	+/-	29.386
Ti	1.000	+/-	148.647
Ca	81547.383	+/-	1431.388
K	3768.264	+/-	273.334
Al	2947.328	+/-	1085.855
P	1012.012	+/-	161.408
Si	13822.465	+/-	622.838
Cl	3178.289	+/-	85.552
S	24627.971	+/-	479.881
Mg	1.000	+/-	11082.058

mRFA -Ergebnisse

XL3t-69288

Reading No 3
Mode Mining
Time 2019-10-31 13:08
Duration 121.82
Units ppm
Sigma Value 2
Sequence Final
Flags
INV NR Gm38
OBJEKT TAFELGEMAELEN
MATERIAL METALL FASSUNG LEINWAND
ANALYSESTELLE P3 MANTEL BISCHOF
MESSAUFBAU STATIV
FILTER m30lo30hi30li30
User Login Raquet



Ele	ppm	+/-	$\pm 2\sigma$
Ce	-339.000	+/-	108.420
La	1.000	+/-	49.551
Ba	1.000	+/-	53.382
Sb	1.000	+/-	22.279
Sn	255.245	+/-	18.456
Cd	18.836	+/-	7.722
Ag	645.029	+/-	20.452
Bal	843845.750	+/-	1100.818
Nb	41.649	+/-	16.213
Zr	1.000	+/-	57.435
Y	1.000	+/-	14.032
Sr	222.335	+/-	7.577
Rb	1.000	+/-	37.151
Th	1.000	+/-	796.997
Bi	1.000	+/-	796.149
Au	734.620	+/-	39.665
As	5098.472	+/-	149.996
Se	1.000	+/-	17.446
Pb	24549.195	+/-	355.493
Hg	1.000	+/-	11.930
Zn	156.269	+/-	15.873
Cu	2571.365	+/-	68.270
Ni	1.000	+/-	31.684
Co	1.000	+/-	49.798
Fe	7324.394	+/-	190.223
Mn	418.334	+/-	77.197
Cr	32.005	+/-	29.362
V	28.278	+/-	25.876
Ti	288.831	+/-	139.515
Ca	70307.055	+/-	958.072
K	4346.025	+/-	241.047
Al	2551.859	+/-	780.488
P	4524.143	+/-	176.779
Si	12725.187	+/-	536.784
Cl	1963.014	+/-	51.961
S	17352.104	+/-	269.997
Mg	1.000	+/-	8082.725

mRFA -Ergebnisse

XL3t-69288

Reading No 4
Mode Mining
Time 2019-10-31 13:11
Duration 120.92
Units ppm
Sigma Value 2
Sequence Final
Flags
INV NR Gm38
OBJEKT TAFELGEMAELEN
MATERIAL METALL FASSUNG LEINWAND
ANALYSESTELLE P4 MANTEL BISCHOF SCHWARZZEICHN
MESSAUFBAU STATIV
FILTER m30lo30hi30li30
User Login Raquet

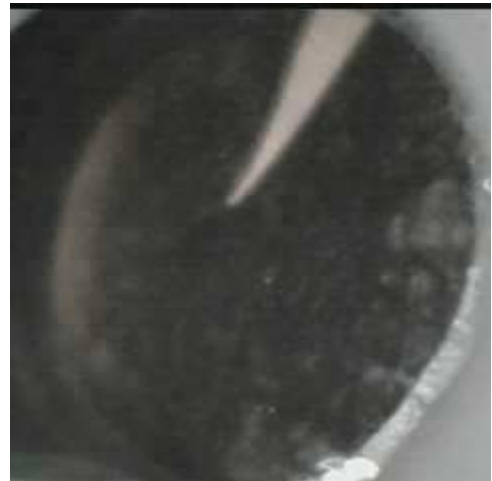


Ele	ppm	+/-	$\pm 2\sigma$
Ce	-339.000	+/-	105.804
La	1.000	+/-	48.534
Ba	1.000	+/-	52.109
Sb	23.623	+/-	18.785
Sn	235.035	+/-	18.290
Cd	24.354	+/-	7.783
Ag	730.240	+/-	21.973
Bal	822808.750	+/-	1244.982
Nb	43.342	+/-	16.762
Zr	1.000	+/-	57.514
Y	1.000	+/-	14.462
Sr	219.825	+/-	7.717
Rb	1.000	+/-	39.801
Th	1.000	+/-	826.054
Bi	1.000	+/-	821.024
Au	657.417	+/-	39.739
As	5575.997	+/-	158.309
Se	1.000	+/-	17.202
Pb	24708.838	+/-	363.964
Hg	1.000	+/-	12.273
Zn	150.718	+/-	16.125
Cu	2890.512	+/-	75.200
Ni	1.000	+/-	32.916
Co	1.000	+/-	55.001
Fe	8995.583	+/-	220.585
Mn	347.180	+/-	76.701
Cr	45.791	+/-	28.173
V	1.000	+/-	33.232
Ti	183.585	+/-	135.249
Ca	75878.250	+/-	1021.045
K	4300.206	+/-	248.429
Al	3959.375	+/-	991.972
P	5992.316	+/-	226.592
Si	17255.455	+/-	692.888
Cl	2038.851	+/-	58.677
S	22934.686	+/-	351.771
Mg	1.000	+/-	9307.111

mRFA -Ergebnisse

XL3t-69288

Reading No 5
Mode Mining
Time 2019-10-31 13:16
Duration 122.00
Units ppm
Sigma Value 2
Sequence Final
Flags
INV NR Gm38
OBJEKT TAFELGEMAELEN
MATERIAL METALL FASSUNG LEINWAND
ANALYSESTELLE P5 MANTEL BISCHOF FARBLACK
MESSAUFBAU STATIV
FILTER m30lo30hi30li30
User Login Raquet



Ele	ppm	+/-	$\pm 2\sigma$
Ce	-339.000	+/-	90.259
La	1.000	+/-	41.366
Ba	1.000	+/-	44.385
Sb	1.000	+/-	24.128
Sn	99.519	+/-	10.988
Cd	18.268	+/-	6.547
Ag	11.126	+/-	4.415
Bal	881948.688	+/-	775.099
Nb	44.826	+/-	13.560
Zr	1.000	+/-	51.175
Y	1.000	+/-	11.550
Sr	84.606	+/-	4.501
Rb	1.000	+/-	27.599
Th	1.000	+/-	673.149
Bi	1.000	+/-	687.007
Au	1.000	+/-	16.611
As	4991.678	+/-	130.827
Se	1.000	+/-	16.986
Pb	20587.289	+/-	280.624
Hg	1.000	+/-	9.770
Zn	218.171	+/-	14.323
Cu	674.289	+/-	30.627
Ni	1.000	+/-	28.177
Co	1.000	+/-	28.755
Fe	1755.811	+/-	84.407
Mn	334.116	+/-	66.235
Cr	1.000	+/-	28.105
V	1.000	+/-	28.033
Ti	133.944	+/-	121.606
Ca	55213.598	+/-	755.782
K	7173.266	+/-	246.506
Al	2279.850	+/-	659.143
P	292.085	+/-	105.269
Si	9702.722	+/-	442.190
Cl	1698.533	+/-	45.922
S	12737.514	+/-	201.946
Mg	1.000	+/-	6521.763

mRFA -Ergebnisse

XL3t-69288

Reading No 6
Mode Mining
Time 2019-10-31 13:23
Duration 121.34
Units ppm
Sigma Value 2
Sequence Final
Flags
INV NR Gm38
OBJEKT TAFELGEMAELEN
MATERIAL METALL FASSUNG LEINWAND
ANALYSESTELLE P6 HAUBE MUTTER
MESSAUFBAU STATIV
FILTER m30lo30hi30li30
User Login Raquet



Ele	ppm	+/-	$\pm 2\sigma$
Ce	-339.000	+/-	128.827
La	1.000	+/-	59.295
Ba	1.000	+/-	63.151
Sb	1.000	+/-	32.932
Sn	203.464	+/-	22.122
Cd	12.462	+/-	8.837
Ag	974.769	+/-	30.685
Bal	881369.000	+/-	1026.313
Nb	65.974	+/-	25.082
Zr	1.000	+/-	82.244
Y	1.000	+/-	21.060
Sr	67.721	+/-	6.176
Rb	1.000	+/-	49.193
Th	1.000	+/-	1141.578
Bi	1.000	+/-	1012.757
Au	409.490	+/-	43.801
As	8536.648	+/-	224.993
Se	1.000	+/-	20.832
Pb	38556.887	+/-	609.109
Hg	1.000	+/-	16.209
Zn	234.959	+/-	18.867
Cu	1783.535	+/-	59.992
Ni	1.000	+/-	35.025
Co	1.000	+/-	58.472
Fe	2427.485	+/-	115.772
Mn	172.055	+/-	73.142
Cr	1.000	+/-	44.116
V	1.000	+/-	30.536
Ti	1.000	+/-	157.182
Ca	33559.785	+/-	582.239
K	4005.963	+/-	232.735
Al	1.000	+/-	1117.868
P	2076.895	+/-	148.598
Si	6638.551	+/-	430.339
Cl	2063.652	+/-	60.185
S	16840.813	+/-	309.304
Mg	1.000	+/-	7239.776

mRFA -Ergebnisse

XL3t-69288

Reading No 7
Mode Mining
Time 2019-10-31 13:29
Duration 120.79
Units ppm
Sigma Value 2
Sequence Final
Flags
INV NR Gm38
OBJEKT TAFELGEMAELEN
MATERIAL METALL FASSUNG LEINWAND
ANALYSESTELLE P7 PRESSBRPOKAT MANTEL VATER
MESSAUFBAU STATIV
FILTER m30lo30hi30li30
User Login Raquet



Ele	ppm	+/-	$\pm 2\sigma$
Ce	-339.000	+/-	119.290
La	1.000	+/-	54.106
Ba	1.000	+/-	57.909
Sb	1.000	+/-	20.099
Sn	11848.372	+/-	147.236
Cd	126.240	+/-	12.082
Ag	22.318	+/-	5.864
Bal	878720.563	+/-	858.982
Nb	16.363	+/-	9.249
Zr	1.000	+/-	43.082
Y	1.000	+/-	7.892
Sr	58.524	+/-	3.789
Rb	1.000	+/-	18.286
Th	1.000	+/-	485.570
Bi	1.000	+/-	480.118
Au	1.000	+/-	13.107
As	1765.162	+/-	84.310
Se	1.000	+/-	11.380
Pb	8861.441	+/-	128.938
Hg	1.000	+/-	7.117
Zn	234.063	+/-	16.985
Cu	560.163	+/-	31.532
Ni	1.000	+/-	35.125
Co	1.000	+/-	46.655
Fe	5436.472	+/-	160.195
Mn	746.707	+/-	94.720
Cr	46.502	+/-	25.888
V	1.000	+/-	26.218
Ti	277.524	+/-	138.769
Ca	52747.531	+/-	731.517
K	4633.632	+/-	282.916
Al	4266.759	+/-	914.209
P	265.284	+/-	131.978
Si	15277.181	+/-	633.602
Cl	1485.510	+/-	50.918
S	12603.771	+/-	203.832
Mg	1.000	+/-	13570.937

mRFA -Ergebnisse

XL3t-69288

Reading No 8
Mode Mining
Time 2019-10-31 13:33
Duration 120.67
Units ppm
Sigma Value 2
Sequence Final
Flags
INV NR Gm38
OBJEKT TAFELGEMAELEN
MATERIAL METALL FASSUNG LEINWAND
ANALYSESTELLE P8 PRESSBRPOKAT MANTEL VATER
MESSAUFBAU STATIV
FILTER m30lo30hi30li30
User Login Raquet



Ele	ppm	+/-	$\pm 2\sigma$
Ce	-339.000	+/-	171.564
La	1.000	+/-	78.088
Ba	1.000	+/-	83.692
Sb	1.000	+/-	26.339
Sn	23365.508	+/-	334.297
Cd	187.080	+/-	18.429
Ag	22.838	+/-	8.133
Bal	790188.813	+/-	1676.877
Nb	28.718	+/-	14.740
Zr	1.000	+/-	69.642
Y	1.000	+/-	12.920
Sr	90.999	+/-	5.773
Rb	1.000	+/-	29.998
Th	1.000	+/-	761.603
Bi	1.000	+/-	740.351
Au	1.000	+/-	19.342
As	1994.078	+/-	126.990
Se	1.000	+/-	17.119
Pb	15346.198	+/-	251.816
Hg	1.000	+/-	10.998
Zn	244.781	+/-	20.864
Cu	285.676	+/-	30.995
Ni	1.000	+/-	49.007
Co	1.000	+/-	48.953
Fe	2723.890	+/-	135.977
Mn	485.357	+/-	108.637
Cr	61.760	+/-	30.967
V	1.000	+/-	41.297
Ti	1.000	+/-	219.980
Ca	122016.703	+/-	1672.589
K	4387.864	+/-	416.494
Al	4116.729	+/-	1377.314
P	1.000	+/-	179.987
Si	15983.438	+/-	779.003
Cl	1291.986	+/-	62.380
S	17177.574	+/-	293.920
Mg	1.000	+/-	12913.041

mRFA -Ergebnisse

XL3t-69288

Reading No 9
Mode Mining
Time 2019-10-31 13:37
Duration 121.10
Units ppm
Sigma Value 2
Sequence Final
Flags
INV NR Gm38
OBJEKT TAFELGEMAELEN
MATERIAL METALL FASSUNG LEINWAND
ANALYSESTELLE P9 ROTER FARBLACK AERMEL VATER
MESSAUFBAU STATIV
FILTER m30lo30hi30li30
User Login Raquet



Ele	ppm	+/-	$\pm 2\sigma$
Ce	-339.000	+/-	121.964
La	1.000	+/-	56.184
Ba	1.000	+/-	60.216
Sb	1.000	+/-	28.100
Sn	115.816	+/-	14.430
Cd	12.257	+/-	8.139
Ag	15.900	+/-	5.912
Bal	860635.063	+/-	1211.087
Nb	67.570	+/-	25.551
Zr	1.000	+/-	83.568
Y	1.000	+/-	21.545
Sr	99.821	+/-	6.874
Rb	1.000	+/-	48.078
Th	1.000	+/-	1161.450
Bi	1.000	+/-	1045.530
Au	1.000	+/-	26.334
As	8630.590	+/-	228.676
Se	17.924	+/-	14.350
Pb	40411.496	+/-	644.972
Hg	1.000	+/-	15.941
Zn	179.188	+/-	18.151
Cu	6039.271	+/-	133.997
Ni	1.000	+/-	35.310
Co	1.000	+/-	31.819
Fe	1019.656	+/-	81.156
Mn	607.753	+/-	86.013
Cr	1.000	+/-	32.862
V	1.000	+/-	28.341
Ti	1.000	+/-	146.023
Ca	33239.504	+/-	582.770
K	12687.361	+/-	368.574
Al	9103.854	+/-	896.846
P	627.831	+/-	113.551
Si	7662.589	+/-	401.534
Cl	2035.264	+/-	54.069
S	16791.314	+/-	301.443
Mg	1.000	+/-	6670.482