

Institut für Kunsttechnik und Konservierung
Kornmarkt 1
90402 Nürnberg

Certificate of Verification

XL3t-69288

Reading No 6
Mode Mining
Time 2014-06-26 14:19
Duration 120.01
Units ppm
Sigma Value 2
Sequence Final
Flags
INV NR GM 21
OBJEKT TAFELGEMAELEN
MATERIAL HOLZ FASSUNG METALL
ANALYSESTELLE P1 HINTERGRUND
MESSAUFBAU STATIV ANLIEGEND
FILTER m30lo30hi30li30
User Login Raquet



	ppm	±	Error
Ce	< LOD	:	129.431
La	< LOD	:	59.411
Ba	< LOD	:	63.989
Sb	< LOD	:	24.181
Sn	17.713	±	8.132
Cd	< LOD	:	13.309
Ag	10.016	±	4.044
Bal	732898.500	±	1244.625
Nb	< LOD	:	3.821
Zr	< LOD	:	15.787
Y	< LOD	:	3.362
Sr	395.725	±	6.804
Rb	11.212	±	5.515
Th	< LOD	:	234.520
Bi	< LOD	:	194.238
Au	1972.263	±	39.735
As	< LOD	:	54.327
Se	< LOD	:	8.169
Pb	1113.006	±	21.928
Hg	< LOD	:	8.789
Zn	53.295	±	11.053
Cu	73.740	±	13.618
Ni	< LOD	:	35.734
Co	< LOD	:	35.535
Fe	1525.821	±	67.882
Mn	< LOD	:	88.721
Cr	53.950	±	18.645
V	< LOD	:	24.488
Ti	< LOD	:	170.936
Ca	210876.563	±	1198.710
K	709.551	±	134.006
Al	2303.048	±	1083.950
P	30327.963	±	394.985
Si	5608.673	±	576.896
Cl	355.781	±	31.844
S	11693.228	±	144.504
Mg	< LOD	:	22342.053

Supervised By: _____

Institut für Kunsttechnik und Konservierung
Kornmarkt 1
90402 Nürnberg

Certificate of Verification

XL3t-69288

Reading No 7
Mode Mining
Time 2014-06-26 14:23
Duration 120.60
Units ppm
Sigma Value 2
Sequence Final
Flags
INV NR GM 21
OBJEKT TAFELGEMAELEN
MATERIAL HOLZ FASSUNG METALL
ANALYSESTELLE P2 BROKAT
MESSAUFBAU STATIV ANLIEGEND
FILTER m30lo30hi30li30
User Login Raquet



	ppm	±	Error
Ce	< LOD	:	394.582
La	< LOD	:	179.405
Ba	< LOD	:	251.996
Sb	< LOD	:	55.397
Sn	29286.006	±	565.157
Cd	140.676	±	21.212
Ag	682.950	±	27.758
Bal	817204.125	±	2260.049
Nb	< LOD	:	55.502
Zr	< LOD	:	180.746
Y	< LOD	:	47.082
Sr	128.958	±	10.733
Rb	< LOD	:	123.375
Th	< LOD	:	2469.120
Bi	< LOD	:	2013.454
Au	3478.897	±	117.785
As	4395.287	±	259.402
Se	< LOD	:	33.752
Pb	47196.652	±	923.247
Hg	< LOD	:	37.649
Zn	231.882	±	29.807
Cu	2054.464	±	83.429
Ni	< LOD	:	88.913
Co	< LOD	:	141.524
Fe	12123.345	±	363.282
Mn	686.130	±	134.777
Cr	117.478	±	32.568
V	< LOD	:	46.036
Ti	872.500	±	174.951
Ca	21482.996	±	503.686
K	5219.003	±	299.166
Al	3763.230	±	759.835
P	13193.117	±	329.669
Si	12293.836	±	527.108
Cl	2698.595	±	71.146
S	11033.408	±	243.874
Mg	< LOD	:	11952.334

Supervised By: _____

Institut für Kunsttechnik und Konservierung
Kornmarkt 1
90402 Nürnberg

Certificate of Verification

XL3t-69288

Reading No 8
Mode Mining
Time 2014-06-26 14:28
Duration 122.22
Units ppm
Sigma Value 2
Sequence Final
Flags
INV NR GM 21
OBJEKT TAFELGEMAELEN
MATERIAL HOLZ FASSUNG METALL
ANALYSESTELLE P3 BROKAT
MESSAUFBAU STATIV ANLIEGEND
FILTER m30lo30hi30li30
User Login Raquet



	ppm	±	Error
Ce	< LOD	:	554.302
La	< LOD	:	215.506
Ba	< LOD	:	199.514
Sb	131.963	±	42.454
Sn	32013.660	±	594.460
Cd	167.239	±	23.337
Ag	60.684	±	12.486
Bal	804485.313	±	2278.209
Nb	< LOD	:	66.926
Zr	< LOD	:	153.860
Y	< LOD	:	39.890
Sr	159.917	±	10.683
Rb	< LOD	:	120.145
Th	< LOD	:	2141.950
Bi	< LOD	:	1876.798
Au	4810.647	±	143.036
As	2152.671	±	218.591
Se	< LOD	:	36.396
Pb	34089.715	±	672.583
Hg	< LOD	:	34.538
Zn	< LOD	:	60.539
Cu	36936.043	±	717.509
Ni	< LOD	:	83.337
Co	< LOD	:	104.215
Fe	6612.351	±	226.462
Mn	279.322	±	114.771
Cr	87.358	±	30.165
V	< LOD	:	53.949
Ti	1020.996	±	186.152
Ca	21477.223	±	485.029
K	11535.165	±	397.598
Al	4082.495	±	832.839
P	12093.342	±	292.620
Si	11501.078	±	513.100
Cl	2031.926	±	55.806
S	14216.503	±	277.378
Mg	< LOD	:	11154.664

Supervised By: _____

Institut für Kunsttechnik und Konservierung
Kornmarkt 1
90402 Nürnberg

Certificate of Verification

XL3t-69288

Reading No 9
Mode Mining
Time 2014-06-26 14:31
Duration 120.24
Units ppm
Sigma Value 2
Sequence Final
Flags
INV NR GM 21
OBJEKT TAFELGEMAELEN
MATERIAL HOLZ FASSUNG METALL
ANALYSESTELLE P4 BROKAT
MESSAUFBAU STATIV ANLIEGEND
FILTER m30lo30hi30li30
User Login Raquet



	ppm	±	Error
Ce	< LOD	:	317.695
La	< LOD	:	144.733
Ba	< LOD	:	152.926
Sb	64.461	±	33.396
Sn	5980.902	±	124.590
Cd	< LOD	:	20.124
Ag	50.617	±	9.902
Bal	831618.063	±	1748.005
Nb	66.164	±	35.728
Zr	< LOD	:	171.795
Y	< LOD	:	44.769
Sr	256.944	±	12.495
Rb	< LOD	:	129.122
Th	< LOD	:	2346.779
Bi	< LOD	:	1837.656
Au	2975.123	±	100.922
As	9120.136	±	285.206
Se	< LOD	:	30.017
Pb	50868.688	±	915.251
Hg	< LOD	:	34.177
Zn	187.594	±	23.667
Cu	2042.427	±	74.265
Ni	< LOD	:	72.883
Co	< LOD	:	109.040
Fe	9072.532	±	270.352
Mn	317.740	±	105.353
Cr	95.471	±	30.416
V	< LOD	:	52.590
Ti	546.397	±	152.027
Ca	29724.119	±	583.473
K	4511.868	±	258.043
Al	3556.657	±	782.116
P	19113.539	±	421.079
Si	12262.035	±	562.010
Cl	2186.049	±	60.290
S	14744.705	±	292.503
Mg	< LOD	:	10081.645

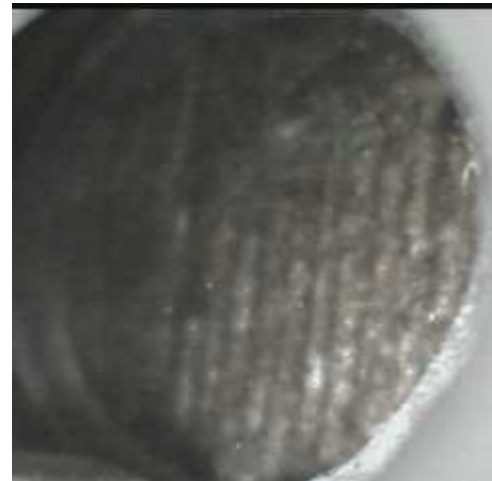
Supervised By: _____

Institut für Kunsttechnik und Konservierung
Kornmarkt 1
90402 Nürnberg

Certificate of Verification

XL3t-69288

Reading No 10
Mode Mining
Time 2014-06-26 14:35
Duration 122.13
Units ppm
Sigma Value 2
Sequence Final
Flags
INV NR GM 21
OBJEKT TAFELGEMAELENDE
MATERIAL HOLZ FASSUNG METALL
ANALYSESTELLE P5 BROKAT
MESSAUFBAU STATIV ANLIEGEND
FILTER m30lo30hi30li30
User Login Raquet



	ppm	±	Error
Ce	< LOD	:	463.364
La	< LOD	:	211.102
Ba	< LOD	:	354.054
Sb	< LOD	:	62.468
Sn	34228.820	±	702.538
Cd	123.782	±	23.424
Ag	76.994	±	13.656
Bal	797098.875	±	2617.876
Nb	< LOD	:	63.016
Zr	< LOD	:	203.222
Y	< LOD	:	53.560
Sr	116.794	±	11.542
Rb	< LOD	:	104.465
Th	< LOD	:	2850.538
Bi	< LOD	:	2145.043
Au	6573.294	±	184.565
As	3807.183	±	278.697
Se	< LOD	:	39.720
Pb	52174.668	±	1063.987
Hg	< LOD	:	41.490
Zn	215.802	±	34.266
Cu	2313.324	±	93.414
Ni	< LOD	:	96.528
Co	< LOD	:	136.556
Fe	9864.439	±	331.790
Mn	386.638	±	133.815
Cr	149.776	±	33.172
V	< LOD	:	47.470
Ti	829.449	±	167.001
Ca	31032.141	±	675.526
K	7150.909	±	334.061
Al	4187.240	±	829.654
P	21798.885	±	503.715
Si	12535.782	±	568.343
Cl	2334.722	±	66.160
S	12240.958	±	272.573
Mg	< LOD	:	11049.446

Supervised By: _____

Institut für Kunsttechnik und Konservierung
Kornmarkt 1
90402 Nürnberg

Certificate of Verification

XL3t-69288

Reading No 11
Mode Mining
Time 2014-06-26 14:40
Duration 122.84
Units ppm
Sigma Value 2
Sequence Final
Flags
INV NR GM 21
OBJEKT TAFELGEMAELEN
MATERIAL HOLZ FASSUNG METALL
ANALYSESTELLE P6 BROKAT
MESSAUFBAU STATIV ANLIEGEND
FILTER m30lo30hi30li30
User Login Raquet



	ppm	±	Error
Ce	< LOD	:	359.125
La	301.272	±	108.694
Ba	246.734	±	114.096
Sb	< LOD	:	53.164
Sn	1516.790	±	51.247
Cd	< LOD	:	18.317
Ag	57.849	±	11.070
Bal	813603.063	±	2136.350
Nb	< LOD	:	69.651
Zr	< LOD	:	217.467
Y	< LOD	:	57.064
Sr	213.635	±	13.257
Rb	< LOD	:	116.938
Th	< LOD	:	3494.455
Bi	< LOD	:	2240.163
Au	6593.604	±	174.357
As	12626.450	±	370.697
Se	< LOD	:	35.255
Pb	67323.641	±	1328.344
Hg	< LOD	:	41.568
Zn	345.268	±	31.781
Cu	2592.719	±	88.468
Ni	106.458	±	49.824
Co	< LOD	:	136.080
Fe	14252.337	±	375.357
Mn	408.795	±	110.730
Cr	101.384	±	35.932
V	< LOD	:	55.350
Ti	753.649	±	176.425
Ca	23430.979	±	509.267
K	3339.006	±	227.469
Al	6583.196	±	784.440
P	17257.283	±	407.121
Si	13144.582	±	531.378
Cl	2306.490	±	63.013
S	12037.191	±	265.834
Mg	< LOD	:	8982.951

Supervised By: _____

Institut für Kunsttechnik und Konservierung
Kornmarkt 1
90402 Nürnberg

Certificate of Verification

XL3t-69288

Reading No 12
Mode Mining
Time 2014-06-26 14:45
Duration 121.14
Units ppm
Sigma Value 2
Sequence Final
Flags
INV NR GM 21
OBJEKT TAFELGEMAELEN
MATERIAL HOLZ FASSUNG METALL
ANALYSESTELLE P7 BROKAT
MESSAUFBAU STATIV ANLIEGEND
FILTER m30lo30hi30li30
User Login Raquet



	ppm	±	Error
Ce	< LOD	:	388.592
La	< LOD	:	256.572
Ba	< LOD	:	240.936
Sb	58.487	±	37.026
Sn	28861.578	±	510.607
Cd	161.701	±	20.264
Ag	52.201	±	10.774
Bal	825907.688	±	1906.673
Nb	< LOD	:	59.410
Zr	< LOD	:	142.156
Y	< LOD	:	36.156
Sr	204.854	±	10.972
Rb	< LOD	:	108.571
Th	< LOD	:	1979.660
Bi	< LOD	:	1626.278
Au	4124.204	±	123.354
As	3543.586	±	210.068
Se	< LOD	:	32.666
Pb	31761.057	±	605.135
Hg	< LOD	:	30.546
Zn	164.113	±	31.381
Cu	10490.121	±	248.338
Ni	< LOD	:	83.536
Co	< LOD	:	92.305
Fe	4699.881	±	197.083
Mn	366.881	±	122.479
Cr	66.355	±	26.980
V	< LOD	:	47.945
Ti	578.259	±	140.639
Ca	24348.531	±	538.364
K	4820.156	±	290.046
Al	3375.261	±	856.485
P	21848.855	±	489.358
Si	12915.293	±	611.657
Cl	2128.304	±	62.253
S	19244.670	±	389.284
Mg	< LOD	:	12210.895

Supervised By: _____

Institut für Kunsttechnik und Konservierung
Kornmarkt 1
90402 Nürnberg

Certificate of Verification

XL3t-69288

Reading No 13
Mode Mining
Time 2014-06-26 14:48
Duration 121.46
Units ppm
Sigma Value 2
Sequence Final
Flags
INV NR GM 21
OBJEKT TAFELGEMAELEN
MATERIAL HOLZ FASSUNG METALL
ANALYSESTELLE P8 MANTEL
MESSAUFBAU STATIV ANLIEGEND
FILTER m30lo30hi30li30
User Login Raquet



	ppm	±	Error
Ce	< LOD	:	189.227
La	< LOD	:	86.984
Ba	< LOD	:	92.756
Sb	< LOD	:	30.287
Sn	30.239	±	11.523
Cd	< LOD	:	10.696
Ag	< LOD	:	7.698
Bal	846280.125	±	1134.753
Nb	< LOD	:	36.365
Zr	< LOD	:	83.873
Y	< LOD	:	20.727
Sr	336.790	±	11.344
Rb	< LOD	:	48.837
Th	< LOD	:	1203.946
Bi	< LOD	:	927.475
Au	< LOD	:	61.919
As	5776.390	±	153.948
Se	< LOD	:	25.215
Pb	20588.650	±	310.598
Hg	3120.066	±	58.707
Zn	425.501	±	27.835
Cu	688.500	±	35.229
Ni	< LOD	:	52.864
Co	< LOD	:	46.742
Fe	1098.218	±	81.369
Mn	372.524	±	86.307
Cr	< LOD	:	41.069
V	< LOD	:	33.801
Ti	< LOD	:	203.551
Ca	33692.598	±	533.086
K	8493.778	±	263.549
Al	7911.345	±	837.907
P	1615.795	±	137.148
Si	44616.801	±	975.141
Cl	3174.848	±	66.724
S	21777.730	±	343.845
Mg	< LOD	:	9651.561

Supervised By: _____

Institut für Kunsttechnik und Konservierung
Kornmarkt 1
90402 Nürnberg

Certificate of Verification

XL3t-69288

Reading No 1
Mode Mining
Time 2014-07-18 11:02
Duration 121.55
Units ppm
Sigma Value 2
Sequence Final
Flags
INV NR GM 21
OBJEKT TAFELGEMALDE
MATERIAL HOLZ METALL FASSUNG
ANALYSESTELLE P9 WAPPEN
MESSAUFBAU STATIV ANLIEGEND
FILTER m30lo30hi30li30
User Login Raquet



	ppm	±	Error
Ce	< LOD	:	218.306
La	< LOD	:	99.753
Ba	< LOD	:	105.882
Sb	394.610	±	29.812
Sn	888.343	±	28.489
Cd	< LOD	:	12.324
Ag	< LOD	:	7.439
Bal	852766.250	±	1312.574
Nb	62.096	±	27.450
Zr	< LOD	:	133.798
Y	< LOD	:	34.382
Sr	227.924	±	9.830
Rb	< LOD	:	67.547
Th	< LOD	:	1843.771
Bi	< LOD	:	1708.258
Au	< LOD	:	42.810
As	9606.318	±	249.979
Se	< LOD	:	30.010
Pb	42149.340	±	702.874
Hg	< LOD	:	24.561
Zn	107.781	±	12.308
Cu	514.412	±	33.367
Ni	< LOD	:	89.827
Co	< LOD	:	74.774
Fe	1854.520	±	106.529
Mn	< LOD	:	123.388
Cr	< LOD	:	55.004
V	< LOD	:	29.889
Ti	425.783	±	114.887
Ca	18647.738	±	382.364
K	2339.274	±	170.974
Al	4098.953	±	688.234
P	1696.859	±	142.200
Si	13829.096	±	503.384
Cl	2099.209	±	53.924
S	35309.508	±	646.072
Mg	12836.562	±	7040.562

Supervised By: _____

Institut für Kunsttechnik und Konservierung
Kornmarkt 1
90402 Nürnberg

Certificate of Verification

XL3t-69288

Reading No 2
Mode Mining
Time 2014-07-18 11:08
Duration 121.75
Units ppm
Sigma Value 2
Sequence Final
Flags
INV NR GM 21
OBJEKT TAFELGEMALDE
MATERIAL HOLZ METALL FASSUNG
ANALYSESTELLE P10 BODEN
MESSAUFBAU STATIV ANLIEGEND
FILTER m30lo30hi30li30
User Login Raquet



	ppm	±	Error
Ce	< LOD	:	238.373
La	< LOD	:	108.651
Ba	< LOD	:	135.037
Sb	< LOD	:	37.473
Sn	233.027	±	18.298
Cd	< LOD	:	12.994
Ag	< LOD	:	7.849
Bal	878884.250	±	1143.932
Nb	66.137	±	30.105
Zr	< LOD	:	145.061
Y	< LOD	:	37.350
Sr	213.256	±	9.927
Rb	< LOD	:	74.014
Th	< LOD	:	1974.554
Bi	< LOD	:	1790.217
Au	< LOD	:	45.556
As	10706.891	±	270.174
Se	< LOD	:	25.964
Pb	46236.633	±	781.568
Hg	< LOD	:	26.215
Zn	107.106	±	12.294
Cu	689.253	±	37.933
Ni	60.845	±	39.431
Co	< LOD	:	67.158
Fe	494.649	±	70.000
Mn	140.455	±	83.321
Cr	< LOD	:	33.768
V	< LOD	:	24.158
Ti	< LOD	:	125.623
Ca	6646.270	±	187.409
K	1373.609	±	140.771
Al	1863.128	±	552.489
P	1492.277	±	127.220
Si	7594.303	±	363.643
Cl	2855.272	±	68.069
S	30774.775	±	590.074
Mg	9543.495	±	6297.620

Supervised By: _____

Institut für Kunsttechnik und Konservierung
Kornmarkt 1
90402 Nürnberg

Certificate of Verification

XL3t-69288

Reading No 3
Mode Mining
Time 2014-07-18 11:12
Duration 120.32
Units ppm
Sigma Value 2
Sequence Final
Flags
INV NR GM 21
OBJEKT TAFELGEMALDE
MATERIAL HOLZ METALL FASSUNG
ANALYSESTELLE P11 WAPPEN
MESSAUFBAU STATIV ANLIEGEND
FILTER m30lo30hi30li30
User Login Raquet



	ppm	±	Error
Ce	< LOD	:	261.395
La	< LOD	:	119.447
Ba	< LOD	:	126.048
Sb	531.042	±	35.802
Sn	1350.034	±	38.426
Cd	< LOD	:	14.014
Ag	12.289	±	7.000
Bal	870059.125	±	1149.456
Nb	50.551	±	26.214
Zr	< LOD	:	128.791
Y	< LOD	:	33.023
Sr	319.511	±	11.404
Rb	< LOD	:	64.596
Th	< LOD	:	1782.819
Bi	< LOD	:	1652.850
Au	< LOD	:	41.428
As	9258.696	±	241.967
Se	< LOD	:	27.404
Pb	39599.320	±	658.085
Hg	< LOD	:	23.873
Zn	119.052	±	13.043
Cu	672.345	±	37.477
Ni	< LOD	:	64.289
Co	< LOD	:	59.610
Fe	1610.614	±	100.681
Mn	< LOD	:	132.666
Cr	< LOD	:	60.443
V	< LOD	:	28.980
Ti	309.055	±	109.384
Ca	20992.033	±	420.219
K	2023.900	±	169.087
Al	2062.888	±	671.948
P	1566.955	±	153.864
Si	10954.250	±	482.132
Cl	2217.760	±	58.786
S	35701.566	±	651.880
Mg	< LOD	:	10823.097

Supervised By: _____

Institut für Kunsttechnik und Konservierung
Kornmarkt 1
90402 Nürnberg

Certificate of Verification

XL3t-69288

Reading No 4
Mode Mining
Time 2014-07-18 11:18
Duration 120.52
Units ppm
Sigma Value 2
Sequence Final
Flags
INV NR GM 21
OBJEKT TAFELGEMALDE
MATERIAL HOLZ METALL FASSUNG
ANALYSESTELLE P12 BODEN
MESSAUFBAU STATIV ANLIEGEND
FILTER m30lo30hi30li30
User Login Raquet



	ppm	±	Error
Ce	< LOD	:	237.541
La	< LOD	:	109.484
Ba	< LOD	:	116.214
Sb	< LOD	:	46.731
Sn	104.079	±	15.825
Cd	< LOD	:	13.094
Ag	< LOD	:	8.054
Bal	906207.750	±	798.782
Nb	44.118	±	22.394
Zr	< LOD	:	111.900
Y	< LOD	:	28.179
Sr	308.841	±	10.463
Rb	< LOD	:	55.034
Th	< LOD	:	1552.722
Bi	< LOD	:	1529.720
Au	< LOD	:	36.527
As	8467.476	±	216.031
Se	< LOD	:	22.635
Pb	32543.764	±	532.718
Hg	< LOD	:	20.618
Zn	98.501	±	11.231
Cu	250.782	±	25.164
Ni	< LOD	:	53.294
Co	< LOD	:	43.350
Fe	272.302	±	59.018
Mn	< LOD	:	119.976
Cr	41.733	±	20.885
V	< LOD	:	25.213
Ti	< LOD	:	119.530
Ca	7318.945	±	186.354
K	1537.523	±	138.440
Al	860.913	±	568.254
P	1574.416	±	140.099
Si	7327.667	±	391.903
Cl	2758.901	±	68.237
S	30148.123	±	570.681
Mg	< LOD	:	9724.320

Supervised By: _____

Institut für Kunsttechnik und Konservierung
Kornmarkt 1
90402 Nürnberg

Certificate of Verification

XL3t-69288

Reading No 5
Mode Mining
Time 2014-07-18 11:23
Duration 120.24
Units ppm
Sigma Value 2
Sequence Final
Flags
INV NR GM 21
OBJEKT TAFELGEMALDE
MATERIAL HOLZ METALL FASSUNG
ANALYSESTELLE P13 WAPPEN
MESSAUFBAU STATIV ANLIEGEND
FILTER m30lo30hi30li30
User Login Raquet



	ppm	±	Error
Ce	< LOD	:	349.472
La	< LOD	:	107.455
Ba	< LOD	:	184.586
Sb	186.683	±	27.837
Sn	91.495	±	14.734
Cd	< LOD	:	12.482
Ag	< LOD	:	7.631
Bal	874763.625	±	1153.827
Nb	57.795	±	29.020
Zr	< LOD	:	140.671
Y	< LOD	:	36.137
Sr	263.584	±	10.810
Rb	< LOD	:	81.850
Th	< LOD	:	1928.487
Bi	< LOD	:	1631.412
Au	< LOD	:	45.207
As	10124.653	±	260.567
Se	< LOD	:	35.445
Pb	44176.352	±	742.132
Hg	< LOD	:	25.483
Zn	123.437	±	12.854
Cu	227.551	±	25.473
Ni	< LOD	:	59.580
Co	52.963	±	34.366
Fe	683.575	±	76.753
Mn	172.574	±	87.829
Cr	< LOD	:	35.057
V	< LOD	:	26.291
Ti	< LOD	:	228.610
Ca	15655.110	±	330.941
K	1739.779	±	149.300
Al	2694.700	±	608.146
P	1842.637	±	140.459
Si	10670.408	±	439.355
Cl	2479.860	±	60.920
S	33856.441	±	626.338
Mg	< LOD	:	13619.897

Supervised By: _____