

mRFA -Ergebnisse

XL3t-69288

Reading No 1
Mode Mining
Time 2018-08-24 10:43
Duration 120.47
Units ppm
Sigma Value 2
Sequence Final
Flags 3mm
INV NR Gm5
OBJEKT TAFELGEMAELENDE
MATERIAL HOLZ METALL FASSUNG
ANALYSESTELLE P1 ROTE BLUETE
MESSAUFBAU STATIV
FILTER m30lo30hi30li30
User Login Raquet



	ppm	+/-	Error
Ce	1.000	+/-	131.874
La	1.000	+/-	106.464
Ba	1.000	+/-	113.364
Sb	1.000	+/-	47.249
Sn	1.000	+/-	42.287
Cd	1.000	+/-	23.136
Ag	22.198	+/-	11.399
Bal	861735.125	+/-	1433.969
Nb	1.000	+/-	8.609
Zr	1.000	+/-	32.795
Y	1.000	+/-	7.452
Sr	238.956	+/-	12.953
Rb	37.595	+/-	18.575
Th	1.000	+/-	457.577
Bi	1.000	+/-	388.035
Au	6836.161	+/-	173.222
As	946.015	+/-	69.613
Se	1.000	+/-	18.034
Pb	2889.416	+/-	79.064
Hg	2895.241	+/-	70.701
Zn	218.206	+/-	47.252
Cu	14803.223	+/-	289.758
Ni	1.000	+/-	42.790
Co	1.000	+/-	68.289
Fe	4962.094	+/-	214.781
Mn	1.000	+/-	124.947
Cr	73.246	+/-	30.270
V	31.431	+/-	25.278
Ti	164.840	+/-	123.959
Ca	51727.008	+/-	791.345
K	1980.834	+/-	196.292
Al	2952.690	+/-	809.625
P	10406.215	+/-	282.389
Si	17097.561	+/-	753.999
Cl	3568.403	+/-	92.846
S	16413.527	+/-	264.353
Mg	1.000	+/-	8154.404

mRFA -Ergebnisse

XL3t-69288

Reading No 2
Mode Mining
Time 2018-08-24 10:48
Duration 121.90
Units ppm
Sigma Value 2
Sequence Final
Flags 3mm
INV NR Gm5
OBJEKT TAFELGEMAELENDE
MATERIAL HOLZ METALL FASSUNG
ANALYSESTELLE P2 BLAUES GEWAND
MESSAUFBAU STATIV
FILTER m30lo30hi30li30
User Login Raquet



	ppm	+/-	Error
Ce	1.000	+/-	184.592
La	1.000	+/-	151.017
Ba	1.000	+/-	159.953
Sb	1.000	+/-	52.935
Sn	39.269	+/-	36.177
Cd	1.000	+/-	17.982
Ag	1.000	+/-	10.805
Bal	833749.688	+/-	1970.053
Nb	1.000	+/-	55.124
Zr	1.000	+/-	116.808
Y	1.000	+/-	29.779
Sr	179.253	+/-	12.318
Rb	1.000	+/-	70.429
Th	1.000	+/-	1688.062
Bi	1.000	+/-	1297.635
Au	1.000	+/-	43.843
As	8471.382	+/-	305.395
Se	1.000	+/-	31.256
Pb	39260.508	+/-	897.549
Hg	1.000	+/-	24.764
Zn	95.139	+/-	24.945
Cu	9412.480	+/-	268.543
Ni	1.000	+/-	43.274
Co	1.000	+/-	44.372
Fe	617.241	+/-	100.772
Mn	1.000	+/-	153.614
Cr	41.280	+/-	33.206
V	1.000	+/-	33.695
Ti	1.000	+/-	134.234
Ca	16994.793	+/-	484.450
K	5334.819	+/-	323.456
Al	12034.521	+/-	1286.836
P	1879.358	+/-	194.525
Si	40847.922	+/-	1386.616
Cl	4431.025	+/-	141.486
S	26611.316	+/-	652.470
Mg	1.000	+/-	8393.210

mRFA -Ergebnisse

XL3t-69288

Reading No 3
Mode Mining
Time 2018-08-24 10:52
Duration 120.27
Units ppm
Sigma Value 2
Sequence Final
Flags 3mm
INV NR Gm5
OBJEKT TAFELGEMAELENDE
MATERIAL HOLZ METALL FASSUNG
ANALYSESTELLE P3 GELBE BLUETE
MESSAUFBAU STATIV
FILTER m30lo30hi30li30
User Login Raquet



	ppm	+/-	Error
Ce	1.000	+/-	145.314
La	1.000	+/-	117.323
Ba	1.000	+/-	123.535
Sb	1.000	+/-	45.267
Sn	2010.812	+/-	86.172
Cd	1.000	+/-	21.576
Ag	1.000	+/-	14.900
Bal	830728.938	+/-	1711.488
Nb	23.916	+/-	21.249
Zr	1.000	+/-	74.082
Y	1.000	+/-	17.646
Sr	196.823	+/-	10.374
Rb	1.000	+/-	50.257
Th	1.000	+/-	1118.591
Bi	1.000	+/-	850.284
Au	2630.949	+/-	99.236
As	3324.263	+/-	170.104
Se	1.000	+/-	18.178
Pb	21503.668	+/-	432.288
Hg	1.000	+/-	17.430
Zn	169.039	+/-	32.284
Cu	14228.061	+/-	329.092
Ni	1.000	+/-	41.465
Co	1.000	+/-	67.082
Fe	4909.653	+/-	209.878
Mn	1.000	+/-	158.930
Cr	1.000	+/-	35.335
V	1.000	+/-	35.144
Ti	1.000	+/-	251.411
Ca	48944.055	+/-	912.068
K	2533.562	+/-	219.760
Al	7529.469	+/-	960.911
P	5873.643	+/-	218.012
Si	19914.525	+/-	763.758
Cl	4554.945	+/-	115.516
S	18652.611	+/-	366.178
Mg	12271.054	+/-	8212.500

mRFA -Ergebnisse

XL3t-69288

Reading No 4
Mode Mining
Time 2018-08-24 10:57
Duration 120.54
Units ppm
Sigma Value 2
Sequence Final
Flags 3mm
INV NR Gm5
OBJEKT TAFELGEMAELEN
MATERIAL HOLZ METALL FASSUNG
ANALYSESTELLE P4 LANZENSTAB
MESSAUFBAU STATIV
FILTER m30lo30hi30li30
User Login Raquet



	ppm	+/-	Error
Ce	1.000	+/-	139.385
La	1.000	+/-	113.580
Ba	1.000	+/-	119.099
Sb	1.000	+/-	42.491
Sn	1.000	+/-	33.277
Cd	1.000	+/-	17.801
Ag	12.217	+/-	10.700
Bal	842502.813	+/-	1584.292
Nb	1.000	+/-	39.237
Zr	1.000	+/-	84.061
Y	1.000	+/-	21.101
Sr	148.845	+/-	9.279
Rb	1.000	+/-	47.939
Th	1.000	+/-	1131.295
Bi	1.000	+/-	1050.942
Au	6523.244	+/-	164.577
As	6932.571	+/-	212.562
Se	1.000	+/-	19.963
Pb	28623.861	+/-	544.695
Hg	1.000	+/-	21.260
Zn	133.712	+/-	26.303
Cu	163.828	+/-	26.446
Ni	1.000	+/-	39.767
Co	1.000	+/-	56.113
Fe	1739.978	+/-	124.747
Mn	1.000	+/-	105.067
Cr	1.000	+/-	30.341
V	1.000	+/-	20.464
Ti	1.000	+/-	94.422
Ca	9112.847	+/-	257.579
K	406.563	+/-	122.134
Al	3315.242	+/-	871.207
P	5147.424	+/-	251.909
Si	18844.201	+/-	793.089
Cl	4551.075	+/-	125.364
S	46197.082	+/-	917.234
Mg	25644.445	+/-	9889.217

mRFA -Ergebnisse

XL3t-69288

Reading No 5
Mode Mining
Time 2018-08-24 11:02
Duration 120.42
Units ppm
Sigma Value 2
Sequence Final
Flags 3mm
INV NR Gm5
OBJEKT TAFELGEMAELEN
MATERIAL HOLZ METALL FASSUNG
ANALYSESTELLE P5 BUCHSCHNALLE
MESSAUFBAU STATIV
FILTER m30lo30hi30li30
User Login Raquet



	ppm	+/-	Error
Ce	1.000	+/-	222.266
La	1.000	+/-	163.858
Ba	1.000	+/-	170.152
Sb	1.000	+/-	84.787
Sn	261.104	+/-	49.522
Cd	1.000	+/-	31.127
Ag	15.364	+/-	14.893
Bal	843653.938	+/-	1933.773
Nb	1.000	+/-	58.125
Zr	1.000	+/-	129.466
Y	1.000	+/-	33.308
Sr	199.322	+/-	13.638
Rb	1.000	+/-	102.963
Th	1.000	+/-	2252.508
Bi	1.000	+/-	1413.856
Au	3892.239	+/-	149.002
As	9547.950	+/-	341.465
Se	1.000	+/-	26.629
Pb	46444.598	+/-	1129.297
Hg	1.000	+/-	27.863
Zn	171.208	+/-	28.514
Cu	1661.212	+/-	83.123
Ni	1.000	+/-	45.305
Co	1.000	+/-	84.247
Fe	935.811	+/-	116.582
Mn	209.941	+/-	115.168
Cr	55.157	+/-	34.560
V	1.000	+/-	26.821
Ti	1.000	+/-	125.884
Ca	14652.748	+/-	456.387
K	1739.746	+/-	205.310
Al	5666.996	+/-	1095.115
P	11104.910	+/-	418.044
Si	18009.172	+/-	933.485
Cl	5520.967	+/-	186.256
S	36257.617	+/-	984.592
Mg	1.000	+/-	9520.032

mRFA -Ergebnisse

XL3t-69288

Reading No 6
Mode Mining
Time 2018-08-24 11:07
Duration 120.73
Units ppm
Sigma Value 2
Sequence Final
Flags 3mm
INV NR Gm5
OBJEKT TAFELGEMAELEN
MATERIAL HOLZ METALL FASSUNG
ANALYSESTELLE P6 ABHAENGLING
MESSAUFBAU STATIV
FILTER m30lo30hi30li30
User Login Raquet



	ppm	+/-	Error
Ce	1.000	+/-	115.134
La	1.000	+/-	93.926
Ba	1.000	+/-	98.384
Sb	1.000	+/-	34.351
Sn	1.000	+/-	22.948
Cd	17.040	+/-	13.825
Ag	9.837	+/-	9.113
Bal	876038.375	+/-	1192.729
Nb	1.000	+/-	10.366
Zr	1.000	+/-	39.689
Y	1.000	+/-	9.288
Sr	267.282	+/-	10.532
Rb	28.219	+/-	20.547
Th	1.000	+/-	578.154
Bi	1.000	+/-	462.265
Au	6736.435	+/-	154.916
As	1870.970	+/-	92.996
Se	1.000	+/-	16.769
Pb	6586.156	+/-	132.513
Hg	1.000	+/-	15.166
Zn	130.809	+/-	29.275
Cu	151.154	+/-	26.551
Ni	1.000	+/-	38.038
Co	1.000	+/-	37.195
Fe	787.687	+/-	95.386
Mn	1.000	+/-	100.287
Cr	31.993	+/-	28.895
V	1.000	+/-	25.155
Ti	1.000	+/-	145.684
Ca	50238.801	+/-	825.903
K	2223.790	+/-	187.707
Al	6323.583	+/-	905.642
P	3591.211	+/-	198.307
Si	13924.082	+/-	652.980
Cl	4364.510	+/-	105.929
S	26678.053	+/-	434.245
Mg	1.000	+/-	8371.207

mRFA -Ergebnisse

XL3t-69288

Reading No 7
Mode Mining
Time 2018-08-24 11:13
Duration 120.78
Units ppm
Sigma Value 2
Sequence Final
Flags 3mm
INV NR Gm5
OBJEKT TAFELGEMAELEN
MATERIAL HOLZ METALL FASSUNG
ANALYSESTELLE P7 LANZENSPITZE
MESSAUFBAU STATIV
FILTER m30lo30hi30li30
User Login Raquet



	ppm	+/-	Error
Ce	1.000	+/-	154.495
La	1.000	+/-	126.265
Ba	1.000	+/-	132.584
Sb	1.000	+/-	45.536
Sn	90.820	+/-	37.639
Cd	1.000	+/-	22.892
Ag	327.942	+/-	29.595
Bal	852683.688	+/-	1605.948
Nb	1.000	+/-	40.955
Zr	1.000	+/-	85.975
Y	1.000	+/-	21.411
Sr	267.303	+/-	12.943
Rb	1.000	+/-	56.359
Th	1.000	+/-	1170.156
Bi	1.000	+/-	1025.177
Au	2387.848	+/-	101.439
As	6293.667	+/-	224.016
Se	1.000	+/-	19.013
Pb	25584.262	+/-	541.491
Hg	1.000	+/-	20.594
Zn	238.677	+/-	27.930
Cu	302.330	+/-	35.765
Ni	1.000	+/-	42.087
Co	1.000	+/-	60.623
Fe	2979.114	+/-	179.223
Mn	1.000	+/-	178.021
Cr	88.339	+/-	36.734
V	1.000	+/-	60.556
Ti	264.965	+/-	241.063
Ca	23089.059	+/-	567.895
K	1905.675	+/-	231.064
Al	6045.406	+/-	1122.298
P	3695.359	+/-	257.757
Si	27655.139	+/-	1103.221
Cl	6702.947	+/-	187.643
S	39397.473	+/-	863.964
Mg	1.000	+/-	12066.058

mRFA -Ergebnisse

XL3t-69288

Reading No 8
Mode Mining
Time 2018-08-24 11:18
Duration 120.11
Units ppm
Sigma Value 2
Sequence Final
Flags 3mm
INV NR Gm5
OBJEKT TAFELGEMAELEN
MATERIAL HOLZ METALL FASSUNG
ANALYSESTELLE P8 HINTERGRUND 1
MESSAUFBAU STATIV
FILTER m30lo30hi30li30
User Login Raquet



	ppm	+/-	Error
Ce	1.000	+/-	110.944
La	1.000	+/-	90.439
Ba	1.000	+/-	96.318
Sb	1.000	+/-	50.436
Sn	1.000	+/-	21.128
Cd	1.000	+/-	16.923
Ag	12.404	+/-	9.395
Bal	732901.688	+/-	2397.021
Nb	1.000	+/-	4.123
Zr	1.000	+/-	13.916
Y	1.000	+/-	3.011
Sr	342.135	+/-	11.979
Rb	26.488	+/-	10.430
Th	1.000	+/-	216.037
Bi	1.000	+/-	160.227
Au	4773.753	+/-	123.183
As	51.862	+/-	20.888
Se	1.000	+/-	13.124
Pb	262.882	+/-	20.556
Hg	18.892	+/-	12.049
Zn	102.347	+/-	28.331
Cu	56.188	+/-	23.076
Ni	1.000	+/-	37.036
Co	1.000	+/-	46.276
Fe	1600.670	+/-	131.931
Mn	1.000	+/-	105.877
Cr	96.813	+/-	29.218
V	1.000	+/-	31.766
Ti	238.428	+/-	133.764
Ca	176018.250	+/-	1810.184
K	2218.212	+/-	210.500
Al	14276.943	+/-	1551.851
P	19302.193	+/-	376.026
Si	36901.355	+/-	1097.625
Cl	2132.196	+/-	73.107
S	8666.282	+/-	149.795
Mg	1.000	+/-	10808.773

mRFA -Ergebnisse

XL3t-69288

Reading No 9
Mode Mining
Time 2018-08-24 11:24
Duration 121.13
Units ppm
Sigma Value 2
Sequence Final
Flags 3mm
INV NR Gm5
OBJEKT TAFELGEMAELENDE
MATERIAL HOLZ METALL FASSUNG
ANALYSESTELLE P9 GEWOELBE 1
MESSAUFBAU STATIV
FILTER m30lo30hi30li30
User Login Raquet

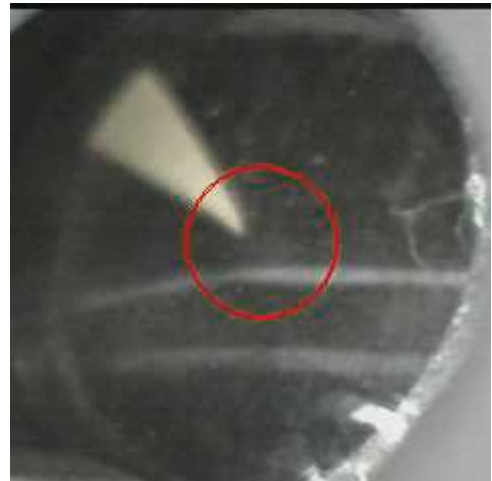


	ppm	+/-	Error
Ce	1.000	+/-	135.928
La	1.000	+/-	111.222
Ba	1.000	+/-	117.009
Sb	1.000	+/-	47.250
Sn	1.000	+/-	41.730
Cd	1.000	+/-	22.259
Ag	368.841	+/-	28.753
Bal	778662.250	+/-	2228.657
Nb	1.000	+/-	22.816
Zr	1.000	+/-	62.354
Y	1.000	+/-	14.859
Sr	311.183	+/-	12.901
Rb	1.000	+/-	36.191
Th	1.000	+/-	869.017
Bi	1.000	+/-	788.632
Au	1.000	+/-	26.157
As	3917.639	+/-	162.134
Se	1.000	+/-	22.836
Pb	14135.213	+/-	302.784
Hg	1.000	+/-	14.410
Zn	71.379	+/-	14.444
Cu	258.517	+/-	34.133
Ni	1.000	+/-	40.932
Co	1.000	+/-	61.046
Fe	3137.632	+/-	186.302
Mn	1.000	+/-	145.329
Cr	1.000	+/-	37.383
V	1.000	+/-	25.255
Ti	159.548	+/-	123.767
Ca	49964.770	+/-	1022.702
K	5417.912	+/-	329.387
Al	26826.641	+/-	1844.928
P	1702.465	+/-	193.123
Si	83205.984	+/-	1980.506
Cl	7314.042	+/-	182.046
S	24545.998	+/-	510.601
Mg	1.000	+/-	8760.094

mRFA -Ergebnisse

XL3t-69288

Reading No 10
Mode Mining
Time 2018-08-24 11:29
Duration 120.70
Units ppm
Sigma Value 2
Sequence Final
Flags 3mm
INV NR Gm5
OBJEKT TAFELGEMAELEN
MATERIAL HOLZ METALL FASSUNG
ANALYSESTELLE P10 GEWOELBE 2
MESSAUFBAU STATIV
FILTER m30lo30hi30li30
User Login Raquet



	ppm	+/-	Error
Ce	1.000	+/-	110.905
La	1.000	+/-	91.837
Ba	1.000	+/-	97.245
Sb	1.000	+/-	34.027
Sn	1.000	+/-	32.644
Cd	16.950	+/-	13.998
Ag	517.344	+/-	29.773
Bal	841759.438	+/-	1508.554
Nb	1.000	+/-	11.840
Zr	1.000	+/-	40.288
Y	1.000	+/-	9.234
Sr	244.417	+/-	9.850
Rb	1.000	+/-	19.897
Th	1.000	+/-	566.744
Bi	1.000	+/-	534.578
Au	67.224	+/-	26.976
As	1867.223	+/-	98.726
Se	1.000	+/-	14.304
Pb	7053.109	+/-	144.517
Hg	1.000	+/-	10.833
Zn	55.797	+/-	14.186
Cu	567.135	+/-	43.059
Ni	1.000	+/-	34.772
Co	1.000	+/-	43.587
Fe	1328.178	+/-	117.951
Mn	1.000	+/-	100.873
Cr	30.200	+/-	27.202
V	1.000	+/-	28.350
Ti	339.204	+/-	123.030
Ca	59625.465	+/-	1017.779
K	6539.040	+/-	322.003
Al	11164.099	+/-	1094.031
P	1933.861	+/-	157.850
Si	47167.793	+/-	1244.486
Cl	6538.584	+/-	144.220
S	13184.951	+/-	251.478
Mg	1.000	+/-	6405.076

mRFA -Ergebnisse

XL3t-69288

Reading No 11
Mode Mining
Time 2018-08-24 11:34
Duration 121.57
Units ppm
Sigma Value 2
Sequence Final
Flags 3mm
INV NR Gm5
OBJEKT TAFELGEMAELEN
MATERIAL HOLZ METALL FASSUNG
ANALYSESTELLE P11 GEWOELBE 2 REFERENZ
MESSAUFBAU STATIV
FILTER m30lo30hi30li30
User Login Raquet



	ppm	+/-	Error
Ce	1.000	+/-	127.041
La	1.000	+/-	104.461
Ba	1.000	+/-	110.855
Sb	1.000	+/-	43.079
Sn	1.000	+/-	47.165
Cd	17.123	+/-	15.691
Ag	528.596	+/-	33.148
Bal	826851.625	+/-	1737.595
Nb	1.000	+/-	18.984
Zr	1.000	+/-	51.967
Y	1.000	+/-	12.326
Sr	282.143	+/-	11.639
Rb	1.000	+/-	32.855
Th	1.000	+/-	728.444
Bi	1.000	+/-	606.606
Au	107.534	+/-	33.947
As	2601.136	+/-	129.321
Se	1.000	+/-	13.525
Pb	10744.019	+/-	222.412
Hg	1.000	+/-	13.361
Zn	73.800	+/-	16.611
Cu	938.616	+/-	57.581
Ni	1.000	+/-	37.389
Co	1.000	+/-	49.344
Fe	1928.956	+/-	145.068
Mn	1.000	+/-	142.817
Cr	1.000	+/-	32.933
V	1.000	+/-	29.266
Ti	264.292	+/-	143.103
Ca	53503.402	+/-	1009.729
K	9510.380	+/-	393.127
Al	14459.596	+/-	1307.642
P	2195.350	+/-	173.751
Si	55295.016	+/-	1463.536
Cl	7447.480	+/-	171.950
S	13250.886	+/-	274.193
Mg	1.000	+/-	7538.654

mRFA -Ergebnisse

XL3t-69288

Reading No 12
Mode Mining
Time 2018-08-24 11:39
Duration 120.58
Units ppm
Sigma Value 2
Sequence Final
Flags 3mm
INV NR Gm5
OBJEKT TAFELGEMAELEN
MATERIAL HOLZ METALL FASSUNG
ANALYSESTELLE P12 GEWOELBE 3
MESSAUFBAU STATIV
FILTER m30lo30hi30li30
User Login Raquet



	ppm	+/-	Error
Ce	1.000	+/-	123.487
La	1.000	+/-	100.255
Ba	1.000	+/-	116.099
Sb	1.000	+/-	47.686
Sn	45.384	+/-	33.161
Cd	20.996	+/-	15.089
Ag	694.256	+/-	36.251
Bal	847711.313	+/-	1561.562
Nb	1.000	+/-	14.744
Zr	1.000	+/-	49.465
Y	1.000	+/-	11.728
Sr	294.384	+/-	11.947
Rb	1.000	+/-	22.303
Th	1.000	+/-	693.061
Bi	1.000	+/-	676.611
Au	1.000	+/-	26.087
As	2445.902	+/-	124.310
Se	1.000	+/-	16.166
Pb	9476.797	+/-	203.487
Hg	1.000	+/-	12.638
Zn	47.719	+/-	14.048
Cu	541.944	+/-	45.451
Ni	1.000	+/-	40.342
Co	1.000	+/-	44.860
Fe	1305.345	+/-	125.967
Mn	1.000	+/-	124.297
Cr	36.265	+/-	31.848
V	1.000	+/-	30.418
Ti	341.332	+/-	133.290
Ca	65647.070	+/-	1221.206
K	4881.361	+/-	344.698
Al	9163.418	+/-	1126.295
P	991.620	+/-	149.602
Si	38650.684	+/-	1211.126
Cl	6111.763	+/-	152.114
S	11592.441	+/-	250.040
Mg	1.000	+/-	7749.470

mRFA -Ergebnisse

XL3t-69288

Reading No 13
Mode Mining
Time 2018-08-24 11:43
Duration 121.14
Units ppm
Sigma Value 2
Sequence Final
Flags 3mm
INV NR Gm5
OBJEKT TAFELGEMAELENDE
MATERIAL HOLZ METALL FASSUNG
ANALYSESTELLE P13 GEWOELBE 3
MESSAUFBAU STATIV
FILTER m30lo30hi30li30
User Login Raquet

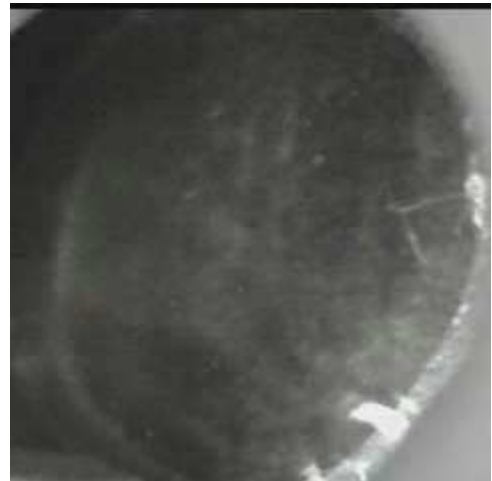


	ppm	+/-	Error
Ce	1.000	+/-	150.469
La	1.000	+/-	122.872
Ba	1.000	+/-	155.131
Sb	1.000	+/-	71.102
Sn	1.000	+/-	33.580
Cd	1.000	+/-	23.125
Ag	163.555	+/-	21.022
Bal	868043.500	+/-	1385.172
Nb	1.000	+/-	35.003
Zr	1.000	+/-	81.696
Y	1.000	+/-	20.206
Sr	272.408	+/-	12.314
Rb	1.000	+/-	46.953
Th	1.000	+/-	1120.094
Bi	1.000	+/-	936.578
Au	1.000	+/-	33.283
As	6139.362	+/-	213.165
Se	1.000	+/-	20.242
Pb	25386.512	+/-	517.116
Hg	1.000	+/-	17.498
Zn	95.891	+/-	14.994
Cu	468.912	+/-	40.450
Ni	1.000	+/-	41.281
Co	1.000	+/-	77.063
Fe	1103.363	+/-	112.798
Mn	128.067	+/-	105.650
Cr	1.000	+/-	30.482
V	1.000	+/-	20.481
Ti	1.000	+/-	97.236
Ca	28797.326	+/-	655.465
K	2983.241	+/-	230.237
Al	5867.013	+/-	960.643
P	2662.634	+/-	205.363
Si	16497.627	+/-	749.559
Cl	5735.923	+/-	154.068
S	35654.637	+/-	755.742
Mg	1.000	+/-	14342.035

mRFA -Ergebnisse

XL3t-69288

Reading No 14
Mode Mining
Time 2018-08-24 11:50
Duration 121.62
Units ppm
Sigma Value 2
Sequence Final
Flags
INV NR Gm5
OBJEKT TAFELGEMAELEN
MATERIAL HOLZ METALL FASSUNG
ANALYSESTELLE P14 GEWOELBE 4
MESSAUFBAU STATIV
FILTER m30lo30hi30li30
User Login Raquet



	ppm	+/-	Error
Ce	-339.000	+/-	85.971
La	1.000	+/-	39.457
Ba	1.000	+/-	42.210
Sb	1.000	+/-	18.737
Sn	18.021	+/-	10.456
Cd	12.104	+/-	5.954
Ag	650.301	+/-	15.205
Bal	794880.625	+/-	1119.375
Nb	1.000	+/-	5.488
Zr	1.000	+/-	22.090
Y	1.000	+/-	4.849
Sr	298.720	+/-	6.307
Rb	1.000	+/-	14.134
Th	1.000	+/-	326.477
Bi	1.000	+/-	253.494
Au	99.828	+/-	14.908
As	1653.904	+/-	57.786
Se	1.000	+/-	6.429
Pb	5628.827	+/-	69.516
Hg	1.000	+/-	5.115
Zn	49.843	+/-	8.618
Cu	605.445	+/-	26.009
Ni	1.000	+/-	24.563
Co	1.000	+/-	24.300
Fe	1459.440	+/-	70.123
Mn	1.000	+/-	79.169
Cr	20.994	+/-	16.650
V	1.000	+/-	20.313
Ti	285.520	+/-	85.948
Ca	77173.273	+/-	716.596
K	7369.115	+/-	215.193
Al	23862.088	+/-	1301.134
P	1955.614	+/-	132.962
Si	67363.680	+/-	1057.042
Cl	4007.855	+/-	62.447
S	12604.853	+/-	154.303
Mg	1.000	+/-	6676.173

mRFA -Ergebnisse

XL3t-69288

Reading No 15
Mode Mining
Time 2018-08-24 11:57
Duration 121.80
Units ppm
Sigma Value 2
Sequence Final
Flags
INV NR Gm5
OBJEKT TAFELGEMAELEN
MATERIAL HOLZ METALL FASSUNG
ANALYSESTELLE P15 GEWAND GRUEN
MESSAUFBAU STATIV
FILTER m30lo30hi30li30
User Login Raquet



	ppm	+/-	Error
Ce	-339.000	+/-	139.355
La	1.000	+/-	65.160
Ba	1.000	+/-	112.644
Sb	35.417	+/-	23.633
Sn	20.224	+/-	12.218
Cd	1.000	+/-	10.983
Ag	1.000	+/-	4.628
Bal	855994.188	+/-	1256.505
Nb	1.000	+/-	19.189
Zr	1.000	+/-	69.514
Y	1.000	+/-	17.155
Sr	262.648	+/-	9.953
Rb	1.000	+/-	51.883
Th	1.000	+/-	1287.286
Bi	1.000	+/-	761.363
Au	1.000	+/-	35.704
As	13963.303	+/-	302.796
Se	1.000	+/-	14.923
Pb	23939.285	+/-	436.500
Hg	1.000	+/-	22.117
Zn	27815.305	+/-	449.911
Cu	7650.715	+/-	152.703
Ni	1.000	+/-	33.590
Co	254.278	+/-	48.896
Fe	3436.729	+/-	126.181
Mn	253.732	+/-	93.121
Cr	391.482	+/-	32.342
V	1.000	+/-	102.747
Ti	492.681	+/-	380.431
Ca	29545.471	+/-	491.459
K	639.395	+/-	129.033
Al	5374.575	+/-	601.966
P	176.072	+/-	59.818
Si	3354.445	+/-	225.404
Cl	2945.225	+/-	59.680
S	4960.979	+/-	97.826
Mg	18493.900	+/-	5660.118

mRFA -Ergebnisse

XL3t-69288

Reading No 16
Mode Mining
Time 2018-08-24 12:02
Duration 120.78
Units ppm
Sigma Value 2
Sequence Final
Flags
INV NR Gm5
OBJEKT TAFELGEMAELENDE
MATERIAL HOLZ METALL FASSUNG
ANALYSESTELLE P16 GEWAND BLAU UEBERMALUNG
MESSAUFBAU STATIV
FILTER m30lo30hi30li30
User Login Raquet



	ppm	+/-	Error
Ce	-339.000	+/-	134.828
La	1.000	+/-	61.705
Ba	1.000	+/-	65.618
Sb	1.000	+/-	21.623
Sn	33.573	+/-	12.219
Cd	1.000	+/-	10.666
Ag	1.000	+/-	6.845
Bal	827370.813	+/-	1454.314
Nb	1.000	+/-	33.834
Zr	1.000	+/-	81.097
Y	1.000	+/-	20.050
Sr	135.999	+/-	9.917
Rb	1.000	+/-	51.438
Th	1.000	+/-	1343.064
Bi	1.000	+/-	876.690
Au	1.000	+/-	47.127
As	7663.241	+/-	222.696
Se	1.000	+/-	15.184
Pb	31678.227	+/-	566.443
Hg	2606.989	+/-	61.885
Zn	1319.646	+/-	50.573
Cu	25009.525	+/-	444.842
Ni	1.000	+/-	36.523
Co	332.078	+/-	43.733
Fe	716.770	+/-	70.616
Mn	100.173	+/-	72.478
Cr	27.326	+/-	20.191
V	1.000	+/-	26.266
Ti	1.000	+/-	97.294
Ca	10761.088	+/-	243.747
K	4847.295	+/-	213.800
Al	18908.045	+/-	1109.906
P	2440.294	+/-	138.307
Si	37376.246	+/-	900.241
Cl	4348.444	+/-	91.231
S	24324.148	+/-	439.271
Mg	1.000	+/-	6637.595