

mRFA -Ergebnisse

XL3t-69288

Reading No 75
 Mode Mining
 Time 2018-04-27 10:32
 Duration 122.00
 Units ppm
 Sigma Value 2
 Sequence Final
 Flags
 INV NR Gm2
 OBJEKT TAFELGEMAELEN
 MATERIAL HOLZ METALL FASSUNG
 ANALYSESTELLE P1 NIMBUS
 MESSAUFBAU STATIV
 FILTER m30lo30hi30li30
 User Login Raquet



	ppm	+/-	Error
Ce	-339.000	+/-	77.583
La	1.000	+/-	35.529
Ba	1.000	+/-	38.010
Sb	33.580	+/-	13.982
Sn	14.402	+/-	7.183
Cd	21.339	+/-	5.499
Ag	5.976	+/-	3.457
Bal	938760.313	+/-	399.868
Nb	19.361	+/-	11.012
Zr	1.000	+/-	38.774
Y	1.000	+/-	9.045
Sr	88.146	+/-	4.169
Rb	1.000	+/-	24.779
Th	1.000	+/-	556.323
Bi	1.000	+/-	443.144
Au	1001.399	+/-	36.410
As	4257.331	+/-	106.358
Se	1.000	+/-	9.599
Pb	15484.188	+/-	193.588
Hg	1.000	+/-	9.013
Zn	80.435	+/-	10.778
Cu	303.396	+/-	20.449
Ni	1.000	+/-	23.965
Co	1.000	+/-	34.933
Fe	3632.599	+/-	111.337
Mn	1.000	+/-	53.931
Cr	22.719	+/-	15.582
V	1.000	+/-	16.646
Ti	1.000	+/-	59.998
Ca	17382.787	+/-	266.726
K	872.424	+/-	93.381
Al	506.038	+/-	315.348
P	1352.172	+/-	80.289
Si	2885.614	+/-	199.418
Cl	1231.424	+/-	28.713
S	12044.376	+/-	173.944
Mg	1.000	+/-	3615.475

mRFA -Ergebnisse

XL3t-69288

Reading No 76
 Mode Mining
 Time 2018-04-27 10:39
 Duration 121.08
 Units ppm
 Sigma Value 2
 Sequence Final
 Flags
 INV NR Gm2
 OBJEKT TAFELGEMAELEN
 MATERIAL HOLZ METALL FASSUNG
 ANALYSESTELLE P2 HAARE
 MESSAUFBAU STATIV
 FILTER m30lo30hi30li30
 User Login Raquet



	ppm	+/-	Error
Ce	-339.000	+/-	84.380
La	1.000	+/-	38.653
Ba	1.000	+/-	41.327
Sb	153.912	+/-	17.142
Sn	1.000	+/-	10.433
Cd	34.853	+/-	6.384
Ag	588.470	+/-	15.071
Bal	930704.188	+/-	485.857
Nb	14.605	+/-	10.961
Zr	1.000	+/-	38.913
Y	1.000	+/-	9.161
Sr	48.260	+/-	5.983
Rb	1.000	+/-	19.713
Th	1.000	+/-	558.306
Bi	1.000	+/-	490.999
Au	1.000	+/-	35.176
As	3882.573	+/-	105.501
Se	1.000	+/-	13.871
Pb	12939.387	+/-	176.700
Hg	3215.472	+/-	52.094
Zn	243.616	+/-	21.735
Cu	214.260	+/-	20.184
Ni	1.000	+/-	27.983
Co	1.000	+/-	36.591
Fe	3508.275	+/-	118.628
Mn	1.000	+/-	103.691
Cr	23.427	+/-	18.352
V	1.000	+/-	14.290
Ti	1.000	+/-	102.176
Ca	16304.152	+/-	271.492
K	1104.652	+/-	120.291
Al	612.796	+/-	375.568
P	2794.390	+/-	112.139
Si	4135.185	+/-	252.488
Cl	1688.624	+/-	37.132
S	17788.877	+/-	260.293
Mg	1.000	+/-	4398.852

mRFA -Ergebnisse

XL3t-69288

Reading No 77
 Mode Mining
 Time 2018-04-27 10:45
 Duration 122.16
 Units ppm
 Sigma Value 2
 Sequence Final
 Flags
 INV NR Gm2
 OBJEKT TAFELGEMAELEN
 MATERIAL HOLZ METALL FASSUNG
 ANALYSESTELLE P3 SCHWERT NAHE GRIFF
 MESSAUFBAU STATIV
 FILTER m30lo30hi30li30
 User Login Raquet



	ppm	+/-	Error
Ce	-339.000	+/-	95.236
La	1.000	+/-	43.446
Ba	1.000	+/-	46.661
Sb	17.669	+/-	16.488
Sn	23.352	+/-	9.102
Cd	10.271	+/-	6.253
Ag	60.354	+/-	6.102
Bal	932943.375	+/-	508.587
Nb	26.929	+/-	16.165
Zr	1.000	+/-	55.558
Y	1.000	+/-	13.409
Sr	66.312	+/-	5.745
Rb	1.000	+/-	30.347
Th	1.000	+/-	782.172
Bi	1.000	+/-	625.995
Au	1.000	+/-	29.432
As	6195.200	+/-	153.799
Se	1.000	+/-	15.172
Pb	23058.412	+/-	332.467
Hg	993.023	+/-	28.915
Zn	119.778	+/-	15.210
Cu	399.186	+/-	25.845
Ni	1.000	+/-	29.104
Co	1.000	+/-	36.751
Fe	3134.217	+/-	116.904
Mn	127.393	+/-	66.139
Cr	42.560	+/-	19.161
V	1.000	+/-	20.099
Ti	1.000	+/-	71.022
Ca	8685.696	+/-	185.683
K	668.783	+/-	102.644
Al	1.000	+/-	548.675
P	996.586	+/-	91.522
Si	4025.927	+/-	248.431
Cl	1401.290	+/-	35.775
S	17003.682	+/-	278.379
Mg	1.000	+/-	7856.830

mRFA -Ergebnisse

XL3t-69288

Reading No 78
 Mode Mining
 Time 2018-04-27 10:50
 Duration 121.79
 Units ppm
 Sigma Value 2
 Sequence Final
 Flags
 INV NR Gm2
 OBJEKT TAFELGEMAELEN
 MATERIAL HOLZ METALL FASSUNG
 ANALYSESTELLE P4 SCHWERT
 MESSAUFBAU STATIV
 FILTER m30lo30hi30li30
 User Login Raquet

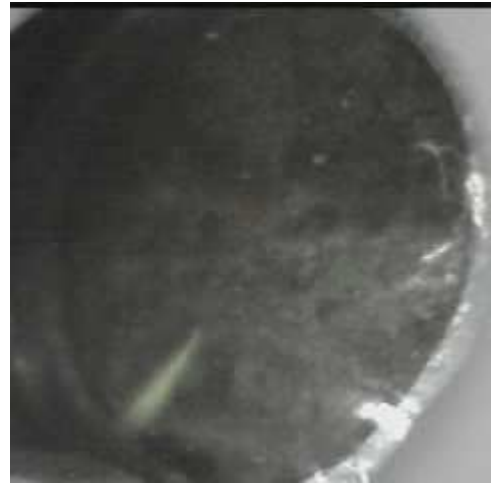


	ppm	+/-	Error
Ce	-339.000	+/-	90.123
La	1.000	+/-	41.259
Ba	1.000	+/-	44.270
Sb	1.000	+/-	22.155
Sn	117.888	+/-	10.839
Cd	18.677	+/-	6.401
Ag	43.170	+/-	5.464
Bal	916954.625	+/-	530.124
Nb	17.822	+/-	10.194
Zr	1.000	+/-	36.300
Y	1.000	+/-	8.476
Sr	131.231	+/-	4.823
Rb	1.000	+/-	20.243
Th	1.000	+/-	524.797
Bi	1.000	+/-	468.249
Au	1.000	+/-	14.748
As	3805.049	+/-	100.414
Se	1.000	+/-	11.505
Pb	13281.933	+/-	171.034
Hg	1.000	+/-	8.373
Zn	143.845	+/-	13.056
Cu	3122.952	+/-	67.714
Ni	1.000	+/-	24.950
Co	1.000	+/-	43.045
Fe	7153.069	+/-	163.971
Mn	461.044	+/-	70.853
Cr	62.586	+/-	19.702
V	19.754	+/-	18.764
Ti	266.213	+/-	102.509
Ca	28085.875	+/-	394.902
K	1576.456	+/-	133.019
Al	1277.246	+/-	426.044
P	951.470	+/-	85.902
Si	9781.579	+/-	356.463
Cl	1302.730	+/-	32.388
S	11424.753	+/-	164.132
Mg	1.000	+/-	4542.746

mRFA -Ergebnisse

XL3t-69288

Reading No 79
 Mode Mining
 Time 2018-04-27 10:55
 Duration 120.30
 Units ppm
 Sigma Value 2
 Sequence Final
 Flags
 INV NR Gm2
 OBJEKT TAFELGEMAELEN
 MATERIAL HOLZ METALL FASSUNG
 ANALYSESTELLE P5 KLEID
 MESSAUFBAU STATIV
 FILTER m30lo30hi30li30
 User Login Raquet

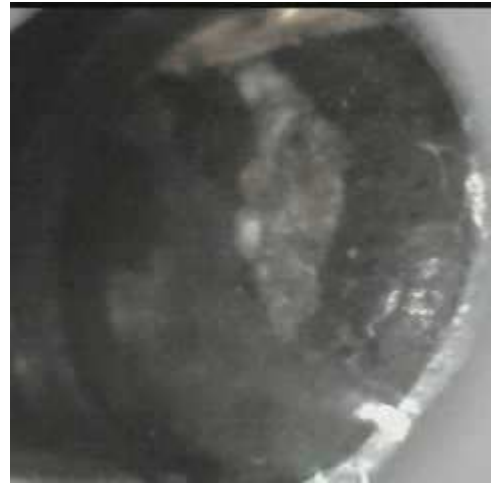


	ppm	+/-	Error
Ce	-339.000	+/-	64.713
La	1.000	+/-	29.625
Ba	1.000	+/-	31.673
Sb	19.501	+/-	11.732
Sn	26.651	+/-	7.137
Cd	16.345	+/-	4.650
Ag	208.787	+/-	7.437
Bal	920579.625	+/-	473.539
Nb	14.390	+/-	8.673
Zr	1.000	+/-	30.992
Y	1.000	+/-	7.081
Sr	87.212	+/-	3.679
Rb	1.000	+/-	19.259
Th	1.000	+/-	451.190
Bi	1.000	+/-	358.133
Au	1.000	+/-	11.491
As	3266.382	+/-	84.760
Se	1.000	+/-	7.776
Pb	11172.463	+/-	134.717
Hg	1.000	+/-	6.676
Zn	50.474	+/-	9.482
Cu	3297.448	+/-	64.694
Ni	1.000	+/-	23.703
Co	239.526	+/-	32.897
Fe	1337.735	+/-	66.252
Mn	1.000	+/-	50.097
Cr	18.001	+/-	14.791
V	1.000	+/-	13.311
Ti	1.000	+/-	58.191
Ca	29626.543	+/-	369.442
K	1355.257	+/-	116.160
Al	2281.361	+/-	430.934
P	1894.611	+/-	101.208
Si	5023.078	+/-	264.543
Cl	1748.016	+/-	35.108
S	17736.537	+/-	220.930
Mg	1.000	+/-	5837.239

mRFA -Ergebnisse

XL3t-69288

Reading No 80
 Mode Mining
 Time 2018-04-27 11:01
 Duration 122.97
 Units ppm
 Sigma Value 2
 Sequence Final
 Flags
 INV NR Gm2
 OBJEKT TAFELGEMAELEN
 MATERIAL HOLZ METALL FASSUNG
 ANALYSESTELLE P6 PAPIERSTERN RS
 MESSAUFBAU STATIV
 FILTER m30lo30hi30li30
 User Login Raquet



	ppm	+/-	Error
Ce	-339.000	+/-	104.805
La	1.000	+/-	47.710
Ba	1.000	+/-	86.340
Sb	40.938	+/-	18.136
Sn	1.000	+/-	9.788
Cd	7.347	+/-	6.618
Ag	361.522	+/-	12.926
Bal	825994.625	+/-	1301.289
Nb	40.010	+/-	20.326
Zr	1.000	+/-	69.610
Y	1.000	+/-	16.655
Sr	49.619	+/-	5.236
Rb	1.000	+/-	33.009
Th	1.000	+/-	995.886
Bi	1.000	+/-	770.970
Au	1.000	+/-	23.132
As	3661.176	+/-	164.429
Se	1.000	+/-	13.949
Pb	29778.344	+/-	446.345
Hg	1.000	+/-	13.196
Zn	107.461	+/-	26.460
Cu	31792.943	+/-	481.268
Ni	1.000	+/-	32.461
Co	1.000	+/-	27.464
Fe	646.831	+/-	62.554
Mn	1.000	+/-	61.122
Cr	1.000	+/-	16.638
V	1.000	+/-	14.073
Ti	1.000	+/-	74.967
Ca	66148.242	+/-	844.757
K	1607.228	+/-	153.264
Al	3917.172	+/-	674.213
P	746.329	+/-	101.538
Si	16912.234	+/-	510.958
Cl	2937.282	+/-	56.208
S	15250.732	+/-	225.175
Mg	1.000	+/-	6334.288

mRFA -Ergebnisse

XL3t-69288

Reading No 81
 Mode Mining
 Time 2018-04-27 11:05
 Duration 121.75
 Units ppm
 Sigma Value 2
 Sequence Final
 Flags
 INV NR Gm2
 OBJEKT TAFELGEMAELEN
 MATERIAL HOLZ METALL FASSUNG
 ANALYSESTELLE P7 FARBTRÖPFEN RS
 MESSAUFBAU STATIV
 FILTER m30lo30hi30li30
 User Login Raquet



	ppm	+/-	Error
Ce	-339.000	+/-	51.805
La	1.000	+/-	23.737
Ba	1.000	+/-	25.580
Sb	20.480	+/-	9.770
Sn	88.223	+/-	6.518
Cd	22.696	+/-	4.099
Ag	9.176	+/-	2.642
Bal	917160.438	+/-	426.610
Nb	12.572	+/-	3.423
Zr	12.240	+/-	11.672
Y	1.000	+/-	2.445
Sr	12.050	+/-	1.518
Rb	1.000	+/-	7.478
Th	1.000	+/-	166.896
Bi	1.000	+/-	148.733
Au	1.000	+/-	4.796
As	54.559	+/-	25.816
Se	1.000	+/-	3.263
Pb	1731.577	+/-	26.052
Hg	7.724	+/-	2.972
Zn	1.000	+/-	13.255
Cu	19298.859	+/-	167.021
Ni	1.000	+/-	17.636
Co	1.000	+/-	34.256
Fe	7081.086	+/-	116.889
Mn	1.000	+/-	41.750
Cr	1.000	+/-	22.450
V	1.000	+/-	16.291
Ti	160.224	+/-	78.681
Ca	9629.080	+/-	153.839
K	11274.097	+/-	235.897
Al	2976.742	+/-	398.175
P	530.513	+/-	69.005
Si	18978.211	+/-	411.840
Cl	475.945	+/-	18.015
S	10463.615	+/-	100.377
Mg	1.000	+/-	3089.956

mRFA -Ergebnisse

XL3t-69288

Reading No 82
 Mode Mining
 Time 2018-04-27 11:10
 Duration 122.22
 Units ppm
 Sigma Value 2
 Sequence Final
 Flags
 INV NR Gm2
 OBJEKT TAFELGEMAELEN
 MATERIAL HOLZ METALL FASSUNG
 ANALYSESTELLE P8 MALSCHICHT AUSRISSE
 MESSAUFBAU STATIV
 FILTER m30lo30hi30li30
 User Login Raquet



	ppm	+/-	Error
Ce	-339.000	+/-	106.660
La	1.000	+/-	48.857
Ba	1.000	+/-	52.040
Sb	29.231	+/-	18.764
Sn	92.903	+/-	11.816
Cd	63.551	+/-	8.795
Ag	13.329	+/-	4.988
Bal	848128.563	+/-	1190.146
Nb	66.100	+/-	22.305
Zr	1.000	+/-	74.621
Y	1.000	+/-	17.987
Sr	14.487	+/-	6.531
Rb	1.000	+/-	36.194
Th	1.000	+/-	1115.618
Bi	1.000	+/-	812.156
Au	1.000	+/-	37.956
As	5293.412	+/-	182.571
Se	1.000	+/-	18.592
Pb	33062.805	+/-	522.800
Hg	1617.294	+/-	41.531
Zn	159.912	+/-	21.886
Cu	5932.741	+/-	131.258
Ni	1.000	+/-	33.583
Co	1.000	+/-	59.809
Fe	9480.293	+/-	238.697
Mn	468.565	+/-	84.876
Cr	24.075	+/-	23.297
V	1.000	+/-	34.340
Ti	1.000	+/-	183.884
Ca	37837.938	+/-	603.587
K	2860.886	+/-	171.167
Al	4584.652	+/-	704.228
P	3372.073	+/-	152.063
Si	20638.615	+/-	613.041
Cl	1792.807	+/-	46.143
S	24465.729	+/-	399.913
Mg	1.000	+/-	6238.654

mRFA -Ergebnisse

XL3t-69288

Reading No 83
 Mode Mining
 Time 2018-04-27 11:16
 Duration 121.77
 Units ppm
 Sigma Value 2
 Sequence Final
 Flags
 INV NR Gm2
 OBJEKT TAFELGEMAELEN
 MATERIAL HOLZ METALL FASSUNG
 ANALYSESTELLE P9 BLUETENMUSTER
 MESSAUFBAU STATIV
 FILTER m30lo30hi30li30
 User Login Raquet



	ppm	+/-	Error
Ce	-339.000	+/-	91.746
La	1.000	+/-	42.075
Ba	1.000	+/-	44.993
Sb	1.000	+/-	18.817
Sn	30.162	+/-	10.280
Cd	12.494	+/-	6.282
Ag	302.074	+/-	11.801
Bal	876592.875	+/-	860.453
Nb	16.064	+/-	11.618
Zr	1.000	+/-	41.090
Y	1.000	+/-	9.813
Sr	83.723	+/-	7.564
Rb	1.000	+/-	20.370
Th	1.000	+/-	592.227
Bi	1.000	+/-	478.666
Au	1.000	+/-	43.075
As	3785.271	+/-	109.094
Se	1.000	+/-	13.587
Pb	13653.738	+/-	187.817
Hg	4887.495	+/-	73.022
Zn	317.473	+/-	26.299
Cu	26.772	+/-	15.327
Ni	1.000	+/-	29.191
Co	1.000	+/-	27.517
Fe	847.573	+/-	68.269
Mn	1.000	+/-	91.109
Cr	21.668	+/-	19.238
V	1.000	+/-	23.506
Ti	1.000	+/-	81.619
Ca	56672.797	+/-	713.379
K	1489.785	+/-	132.764
Al	543.695	+/-	526.851
P	3236.328	+/-	134.742
Si	3964.091	+/-	297.082
Cl	1191.402	+/-	34.358
S	17121.510	+/-	236.530
Mg	15203.044	+/-	6566.659