

## RFAnalyse-Zertifikat

XL3t-69288

Reading No 1  
Mode Mining  
Time 2014-07-29 15:22  
Duration 120.97  
Units ppm  
Sigma Value 2  
Sequence Final  
Flags  
INV NR GNM Gm 20 VS  
OBJEKT Tod Mariens  
MATERIAL Holz bemalt  
ANALYSESTELLE P1 Goldgrund durch Haare  
MESSAUFBAU STATIV  
FILTER 30 30 30 35  
User Login Stein



	ppm	±	Error
Ce	< LOD	:	117.327
La	< LOD	:	54.036
Ba	< LOD	:	58.019
Sb	< LOD	:	19.865
Sn	27.092	±	7.722
Cd	10.899	±	5.450
Ag	7.362	±	3.659
Bal	795177.625	±	1032.074
Nb	< LOD	:	14.728
Zr	< LOD	:	35.482
Y	< LOD	:	8.157
Sr	310.728	±	6.408
Rb	< LOD	:	16.842
Th	< LOD	:	525.682
Bi	< LOD	:	482.520
Au	2239.405	±	46.056
As	1835.435	±	61.387
Se	< LOD	:	11.949
Pb	6874.415	±	79.794
Hg	< LOD	:	11.111
Zn	105.262	±	12.643
Cu	171.278	±	16.305
Ni	< LOD	:	35.184
Co	< LOD	:	40.302
Fe	2054.949	±	77.806
Mn	< LOD	:	109.052
Cr	< LOD	:	29.785
V	< LOD	:	30.174
Ti	< LOD	:	134.399
Ca	138682.141	±	1099.751
K	1211.711	±	131.223
Al	3089.972	±	918.142
P	13627.396	±	274.782
Si	11112.278	±	562.017
Cl	1920.699	±	47.236
S	21396.863	±	227.375
Mg	< LOD	:	19295.830

## RFAnalyse-Zertifikat

XL3t-69288

Reading No 2  
Mode Mining  
Time 2014-07-29 15:30  
Duration 120.59  
Units ppm  
Sigma Value 2  
Sequence Final  
Flags  
INV NR GNM Gm 20 VS  
OBJEKT Tod Mariens  
MATERIAL Holz bemalt  
ANALYSESTELLE P2 Goldgrund ohne Haare  
MESSAUFBAU STATIV  
FILTER 30 30 30 35  
User Login Stein

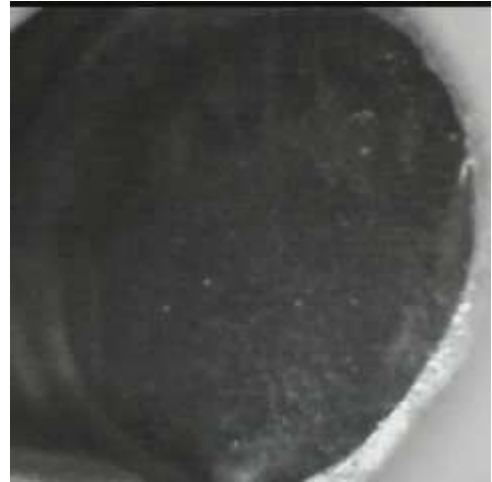


	ppm	±	Error
Ce	< LOD	:	116.517
La	< LOD	:	53.301
Ba	< LOD	:	57.216
Sb	< LOD	:	20.823
Sn	112.130	±	9.214
Cd	12.632	±	5.429
Ag	11.558	±	3.766
Bal	727731.375	±	1241.684
Nb	< LOD	:	3.880
Zr	< LOD	:	15.795
Y	< LOD	:	3.344
Sr	394.908	±	6.695
Rb	22.391	±	6.115
Th	< LOD	:	278.444
Bi	< LOD	:	182.323
Au	3780.191	±	55.948
As	70.109	±	21.557
Se	< LOD	:	9.857
Pb	1034.377	±	20.627
Hg	< LOD	:	9.895
Zn	177.370	±	15.274
Cu	110.870	±	14.181
Ni	< LOD	:	32.727
Co	< LOD	:	31.917
Fe	1141.090	±	58.907
Mn	< LOD	:	79.518
Cr	54.304	±	21.103
V	< LOD	:	24.344
Ti	169.153	±	87.294
Ca	195607.906	±	1128.367
K	854.526	±	134.990
Al	3822.018	±	1153.430
P	41119.379	±	460.537
Si	6272.501	±	626.194
Cl	575.291	±	35.547
S	16910.781	±	179.116
Mg	< LOD	:	16715.682

## RFAnalyse-Zertifikat

XL3t-69288

Reading No 3  
Mode Mining  
Time 2014-07-29 15:35  
Duration 121.93  
Units ppm  
Sigma Value 2  
Sequence Final  
Flags  
INV NR GNM Gm 20 VS  
OBJEKT Tod Mariens  
MATERIAL Holz bemalt  
ANALYSESTELLE P3 dunkles GEWAND Apostel  
MESSAUFBAU STATIV  
FILTER 30 30 30 35  
User Login Stein



	ppm	±	Error
Ce	< LOD	:	155.630
La	< LOD	:	70.716
Ba	< LOD	:	75.703
Sb	< LOD	:	25.172
Sn	88.088	±	10.841
Cd	15.283	±	6.837
Ag	< LOD	:	6.444
Bal	870111.563	±	967.224
Nb	< LOD	:	27.396
Zr	< LOD	:	93.750
Y	< LOD	:	22.982
Sr	188.210	±	7.323
Rb	< LOD	:	54.007
Th	< LOD	:	1320.051
Bi	< LOD	:	1031.894
Au	< LOD	:	31.888
As	6778.690	±	172.663
Se	< LOD	:	22.887
Pb	26909.168	±	395.307
Hg	< LOD	:	17.702
Zn	97.702	±	18.599
Cu	14985.978	±	244.712
Ni	< LOD	:	45.660
Co	< LOD	:	52.289
Fe	246.697	±	49.519
Mn	< LOD	:	133.304
Cr	< LOD	:	25.667
V	< LOD	:	19.172
Ti	< LOD	:	100.789
Ca	9027.765	±	182.627
K	350.385	±	87.528
Al	3498.479	±	604.640
P	2652.944	±	142.748
Si	13586.676	±	458.004
Cl	2457.068	±	52.032
S	35413.090	±	531.460
Mg	13568.747	±	6518.349

## RFAnalyse-Zertifikat

XL3t-69288

Reading No 4  
Mode Mining  
Time 2014-07-29 15:40  
Duration 121.46  
Units ppm  
Sigma Value 2  
Sequence Final  
Flags  
INV NR GNM Gm 20 VS  
OBJEKT Tod Mariens  
MATERIAL Holz bemalt  
ANALYSESTELLE P4 Strahlennimbus Maria  
MESSAUFBAU STATIV  
FILTER 30 30 30 35  
User Login Stein



	ppm	±	Error
Ce	< LOD	:	222.979
La	< LOD	:	102.532
Ba	< LOD	:	108.205
Sb	< LOD	:	35.398
Sn	342.076	±	20.206
Cd	< LOD	:	12.307
Ag	< LOD	;	9.095
Bal	827683.938	±	1560.211
Nb	< LOD	:	48.848
Zr	< LOD	:	157.294
Y	< LOD	:	40.333
Sr	222.659	±	11.173
Rb	< LOD	:	112.358
Th	< LOD	:	2551.183
Bi	< LOD	:	1661.793
Au	182.519	±	50.608
As	11062.828	±	300.005
Se	< LOD	:	32.288
Pb	48449.504	±	885.351
Hg	< LOD	:	38.952
Zn	213.320	±	19.793
Cu	829.712	±	43.770
Ni	< LOD	:	96.436
Co	< LOD	:	105.739
Fe	10573.196	±	292.094
Mn	304.639	±	92.115
Cr	< LOD	:	38.521
V	< LOD	:	41.824
Ti	< LOD	:	164.923
Ca	11073.937	±	280.628
K	1614.428	±	163.961
Al	6147.524	±	861.604
P	11923.722	±	320.097
Si	26832.936	±	815.709
Cl	3500.456	±	87.101
S	38960.574	±	777.511
Mg	< LOD	:	16391.150

## RFAnalyse-Zertifikat

XL3t-69288

Reading No 5  
Mode Mining  
Time 2014-07-29 15:46  
Duration 120.29  
Units ppm  
Sigma Value 2  
Sequence Final  
Flags  
INV NR GNM Gm 20 VS  
OBJEKT Tod Mariens  
MATERIAL Holz bemalt  
ANALYSESTELLE P5 Mondsichel  
MESSAUFBAU STATIV  
FILTER 30 30 30 35  
User Login Stein



	ppm	±	Error
Ce	< LOD	:	155.356
La	< LOD	:	71.517
Ba	< LOD	:	76.433
Sb	< LOD	:	25.228
Sn	228.046	±	14.777
Cd	15.775	±	6.933
Ag	457.313	±	14.294
Bal	850728.313	±	1017.610
Nb	< LOD	:	33.263
Zr	< LOD	:	74.934
Y	< LOD	:	18.097
Sr	225.532	±	7.401
Rb	< LOD	:	54.548
Th	< LOD	:	1072.551
Bi	< LOD	:	836.998
Au	3544.839	±	78.630
As	4686.943	±	131.187
Se	< LOD	:	19.723
Pb	19030.420	±	264.580
Hg	< LOD	:	17.852
Zn	121.089	±	17.626
Cu	2547.416	±	65.075
Ni	< LOD	:	46.804
Co	< LOD	:	76.263
Fe	7765.166	±	188.767
Mn	179.188	±	72.435
Cr	< LOD	:	29.663
V	< LOD	:	38.410
Ti	< LOD	:	131.434
Ca	41921.453	±	571.709
K	2174.650	±	191.671
Al	5346.155	±	806.083
P	8674.513	±	224.822
Si	25000.193	±	705.221
Cl	3246.950	±	65.017
S	23988.545	±	337.765
Mg	< LOD	:	13560.313

RFAlyse-Zertifikat

XL3t-69288

Reading No 6  
Mode Mining  
Time 2014-07-29 15:55  
Duration 121.26  
Units ppm  
Sigma Value 2  
Sequence Final  
Flags  
INV NR GNM Gm 20 RS  
OBJEKT Johannes predigt  
MATERIAL Holz bemalt  
ANALYSESTELLE P6 Nimbus  
MESSAUFBAU STATIV  
FILTER 30 30 30 35  
User Login Stein



	ppm	±	Error
Ce	< LOD	:	126.488
La	< LOD	:	58.057
Ba	< LOD	:	61.938
Sb	< LOD	:	25.988
Sn	74.525	±	8.991
Cd	21.660	±	5.945
Ag	6.159	±	3.739
Bal	911412.063	±	599.305
Nb	< LOD	:	25.370
Zr	< LOD	:	59.901
Y	< LOD	:	14.089
Sr	154.861	±	5.607
Rb	< LOD	:	43.148
Th	< LOD	:	862.117
Bi	< LOD	:	729.042
Au	1239.549	±	42.139
As	2947.558	±	101.230
Se	< LOD	:	15.915
Pb	13541.443	±	183.083
Hg	< LOD	:	12.719
Zn	20195.475	±	269.663
Cu	112.825	±	17.224
Ni	< LOD	:	37.886
Co	< LOD	:	61.130
Fe	6004.418	±	143.856
Mn	811.203	±	80.629
Cr	169.691	±	19.310
V	< LOD	:	31.150
Ti	< LOD	:	202.977
Ca	18494.506	±	280.726
K	570.106	±	94.900
Al	2411.419	±	381.957
P	1952.892	±	80.552
Si	9465.296	±	309.889
Cl	2075.784	±	36.873
S	8317.731	±	117.653
Mg	< LOD	:	5146.882

## RFAnalyse-Zertifikat

XL3t-69288

Reading No 7  
Mode Mining  
Time 2014-07-29 16:01  
Duration 121.09  
Units ppm  
Sigma Value 2  
Sequence Final  
Flags  
INV NR GNM Gm 20 RS  
OBJEKT Johannes predigt  
MATERIAL Holz bemalt  
ANALYSESTELLE P7 GEWAND Johannes  
MESSAUFBAU STATIV  
FILTER 30 30 30 35  
User Login Stein



	ppm	±	Error
Ce	< LOD	:	85.210
La	< LOD	:	38.865
Ba	< LOD	:	41.984
Sb	< LOD	:	21.729
Sn	23.212	±	5.692
Cd	15.216	±	4.169
Ag	< LOD	:	3.904
Bal	888097.250	±	589.371
Nb	13.439	±	6.116
Zr	< LOD	:	32.785
Y	< LOD	:	7.342
Sr	95.686	±	3.312
Rb	< LOD	:	22.084
Th	< LOD	:	484.207
Bi	< LOD	:	394.890
Au	< LOD	:	13.479
As	1986.675	±	58.747
Se	< LOD	:	9.611
Pb	7056.912	±	77.800
Hg	< LOD	:	8.200
Zn	368.026	±	15.034
Cu	431.917	±	20.172
Ni	< LOD	:	29.739
Co	< LOD	:	48.128
Fe	5244.462	±	115.090
Mn	172.735	±	53.148
Cr	< LOD	:	22.937
V	< LOD	:	44.858
Ti	< LOD	:	148.508
Ca	48196.457	±	475.496
K	4907.323	±	160.447
Al	8215.206	±	617.797
P	1798.407	±	94.863
Si	15728.814	±	428.652
Cl	1082.539	±	26.378
S	11314.761	±	129.979
Mg	< LOD	:	6735.861