

RFAnalyse-Zertifikat

XL3t-69288

Reading No 1
Mode Mining
Time 2014-07-29 14:05
Duration 120.93
Units ppm
Sigma Value 2
Sequence Final
Flags
INV NR GNM Gm 19 VS
OBJEKT Tempelgang MARIENS
MATERIAL Holz bemalt
ANALYSESTELLE P1 Goldgrund
MESSAUFBAU STATIV
FILTER 30 30 30 35
User Login Stein



	ppm	±	Error
Ce	< LOD	:	106.299
La	< LOD	:	48.903
Ba	< LOD	:	52.562
Sb	< LOD	:	17.998
Sn	13.576	±	6.808
Cd	12.172	±	5.032
Ag	9.487	±	3.441
Bal	750642.375	±	1083.811
Nb	< LOD	:	3.822
Zr	< LOD	:	15.726
Y	< LOD	:	3.342
Sr	310.444	±	5.474
Rb	14.062	±	5.551
Th	< LOD	:	235.805
Bi	< LOD	:	183.114
Au	2412.011	±	40.796
As	236.323	±	24.410
Se	< LOD	:	8.054
Pb	1425.114	±	23.120
Hg	< LOD	:	5.750
Zn	77.966	±	11.107
Cu	38.416	±	11.216
Ni	< LOD	:	30.313
Co	< LOD	:	26.148
Fe	779.191	±	48.434
Mn	< LOD	:	70.630
Cr	64.043	±	16.767
V	< LOD	:	23.480
Ti	< LOD	:	154.340
Ca	191667.859	±	1051.033
K	788.707	±	126.024
Al	2823.253	±	1022.971
P	26115.291	±	357.590
Si	7250.335	±	568.174
Cl	914.753	±	36.777
S	14404.659	±	156.835
Mg	< LOD	:	25809.383

RFAlyse-Zertifikat

XL3t-69288

Reading No 2
Mode Precious Metals
Time 2014-07-29 14:08
Duration 29.98
Units %
Sigma Value 2
Sequence Final
Flags AuDIT Disabled
INV NR GNM Gm 23 VS
OBJEKT Tempelgang MARIENS
MATERIAL Holz bemalt
ANALYSESTELLE P1 GOLDGRUND
MESSAUFBAU STATIV
FILTER 30
User Login Stein



	%	±	Error
Sn	2.549	±	0.282
Cd	5.128	±	0.268
Ag	3.050	±	0.234
Nb	0.323	±	0.039
Au	42.150	±	0.539
Se	< LOD	:	0.214
Pb	20.562	±	0.415
Zn	0.624	±	0.073
Cu	0.368	±	0.070
Ni	< LOD	:	0.243
Co	< LOD	:	0.174
Fe	5.255	±	0.249
Mn	< LOD	:	0.510
Cr	< LOD	:	0.566
Ti	< LOD	:	2.087
In	3.007	±	0.248
Pd	4.295	±	0.201
Rh	7.464	±	0.232
Ru	1.371	±	0.084
Mo	0.564	±	0.049
Pt	0.964	±	0.220
Ir	2.325	±	0.281
Ga	< LOD	:	0.298

RFAnalyse-Zertifikat

XL3t-69288

Reading No 3
Mode Mining
Time 2014-07-29 14:17
Duration 120.93
Units ppm
Sigma Value 2
Sequence Final
Flags
INV NR GNM Gm 19 VS
OBJEKT Tempelgang MARIENS
MATERIAL Holz bemalt
ANALYSESTELLE P2 Wappen
MESSAUFBAU STATIV
FILTER 30 30 30 35
User Login Stein



	ppm	±	Error
Ce	< LOD	:	505.519
La	386.816	±	153.493
Ba	418.441	±	161.991
Sb	< LOD	:	73.497
Sn	7946.311	±	224.257
Cd	< LOD	:	30.064
Ag	< LOD	:	28.978
Bal	751604.188	±	3832.857
Nb	174.546	±	82.469
Zr	< LOD	:	355.755
Y	< LOD	:	97.123
Sr	88.094	±	15.738
Rb	< LOD	:	206.435
Th	< LOD	:	5804.865
Bi	< LOD	:	3486.072
Au	< LOD	:	100.220
As	16802.547	±	552.593
Se	< LOD	:	50.254
Pb	121554.969	±	2734.569
Hg	< LOD	:	55.866
Zn	189.391	±	22.092
Cu	683.561	±	50.792
Ni	126.530	±	61.113
Co	< LOD	:	84.238
Fe	1829.179	±	142.699
Mn	351.258	±	122.978
Cr	55.161	±	35.530
V	< LOD	:	63.987
Ti	< LOD	:	222.070
Ca	17526.535	±	561.465
K	5613.755	±	391.488
Al	3928.858	±	1013.199
P	2745.094	±	180.820
Si	18721.316	±	747.032
Cl	3951.618	±	120.642
S	29431.832	±	753.243
Mg	< LOD	:	15763.269

RFAnalyse-Zertifikat

XL3t-69288

Reading No 4
Mode Mining
Time 2014-07-29 14:21
Duration 121.13
Units ppm
Sigma Value 2
Sequence Final
Flags
INV NR GNM Gm 19 VS
OBJEKT Tempelgang MARIENS
MATERIAL Holz bemalt
ANALYSESTELLE P3 WAPPEN
MESSAUFBAU STATIV
FILTER 30 30 30 35
User Login Stein



	ppm	±	Error
Ce	709.500	±	342.352
La	474.656	±	155.275
Ba	402.053	±	162.344
Sb	< LOD	:	103.863
Sn	6660.672	±	194.408
Cd	< LOD	:	46.464
Ag	< LOD	:	19.466
Bal	756678.375	±	3736.814
Nb	179.882	±	81.586
Zr	< LOD	:	352.296
Y	< LOD	:	95.759
Sr	107.892	±	15.975
Rb	< LOD	:	199.283
Th	< LOD	:	5619.817
Bi	< LOD	:	3448.436
Au	< LOD	:	108.680
As	17560.668	±	557.166
Se	< LOD	:	33.726
Pb	120765.094	±	2710.869
Hg	< LOD	:	55.364
Zn	280.829	±	25.862
Cu	739.402	±	51.865
Ni	91.677	±	59.287
Co	106.434	±	47.272
Fe	296.413	±	91.275
Mn	< LOD	:	261.596
Cr	< LOD	:	55.225
V	< LOD	:	39.153
Ti	< LOD	:	199.807
Ca	15966.969	±	519.957
K	3131.629	±	331.190
Al	2841.744	±	986.732
P	4222.394	±	214.379
Si	15463.005	±	667.847
Cl	4014.795	±	121.321
S	35821.445	±	894.978
Mg	< LOD	:	16113.486

RFAnalyse-Zertifikat

XL3t-69288

Reading No 5
Mode Mining
Time 2014-07-29 14:25
Duration 123.13
Units ppm
Sigma Value 2
Sequence Final
Flags 3mm
INV NR GNM Gm 19 VS
OBJEKT Tempelgang MARIENS
MATERIAL Holz bemalt
ANALYSESTELLE P3 WAPPEN
MESSAUFBAU STATIV Small spot
FILTER 30 30 30 35
User Login Stein



	ppm	±	Error
Ce	944.429	±	404.086
La	598.743	±	322.033
Ba	< LOD	:	780.471
Sb	< LOD	:	201.757
Sn	13223.488	±	547.188
Cd	< LOD	:	60.877
Ag	< LOD	;	61.872
Bal	772646.875	±	4634.500
Nb	174.026	±	101.139
Zr	< LOD	:	432.794
Y	< LOD	:	119.071
Sr	121.590	±	21.152
Rb	< LOD	:	248.026
Th	< LOD	:	6260.127
Bi	< LOD	:	4414.868
Au	< LOD	;	153.945
As	14880.676	±	619.547
Se	< LOD	:	77.739
Pb	118253.031	±	3339.018
Hg	< LOD	:	76.512
Zn	220.632	±	31.844
Cu	885.664	±	73.550
Ni	< LOD	:	111.060
Co	< LOD	:	137.003
Fe	271.582	±	123.395
Mn	291.181	±	163.242
Cr	< LOD	:	85.238
V	< LOD	:	54.728
Ti	< LOD	:	242.978
Ca	14195.022	±	672.498
K	3602.254	±	460.966
Al	3266.073	±	1133.658
P	4930.503	±	275.900
Si	15007.957	±	839.348
Cl	4900.396	±	189.061
S	31414.471	±	948.977
Mg	< LOD	:	29367.334

RFAnalyse-Zertifikat

XL3t-69288

Reading No 6
Mode Mining
Time 2014-07-29 14:41
Duration 121.49
Units ppm
Sigma Value 2
Sequence Final
Flags 3mm
INV NR GNM Gm 19 VS
OBJEKT Tempelgang MARIENS
MATERIAL Holz bemalt
ANALYSESTELLE P4 Wappen
MESSAUFBAU STATIV Small spot
FILTER 30 30 30 35
User Login Stein



	ppm	±	Error
Ce	< LOD	:	378.707
La	< LOD	:	307.527
Ba	< LOD	:	318.643
Sb	< LOD	:	99.767
Sn	7615.346	±	266.037
Cd	< LOD	:	40.270
Ag	< LOD	;	22.843
Bal	829169.063	±	2458.135
Nb	86.893	±	53.099
Zr	< LOD	:	244.463
Y	< LOD	:	65.426
Sr	165.401	±	14.706
Rb	< LOD	:	157.327
Th	< LOD	:	3342.249
Bi	< LOD	:	2641.108
Au	< LOD	;	101.519
As	10400.692	±	383.542
Se	< LOD	:	52.440
Pb	66131.820	±	1509.567
Hg	< LOD	:	51.372
Zn	212.511	±	25.711
Cu	381.972	±	43.526
Ni	< LOD	:	103.653
Co	< LOD	:	138.619
Fe	1357.606	±	142.436
Mn	278.060	±	129.665
Cr	< LOD	:	71.666
V	< LOD	:	44.427
Ti	< LOD	:	209.207
Ca	33829.855	±	872.406
K	5815.098	±	388.496
Al	2283.167	±	892.258
P	3230.612	±	203.546
Si	13345.230	±	720.898
Cl	6117.433	±	184.109
S	19579.184	±	490.768
Mg	< LOD	:	13628.452

RFAnalyse-Zertifikat

XL3t-69288

Reading No 7
Mode Mining
Time 2014-07-29 14:48
Duration 120.70
Units ppm
Sigma Value 2
Sequence Final
Flags
INV NR GNM Gm 19 VS
OBJEKT Tempelgang MARIENS
MATERIAL Holz bemalt
ANALYSESTELLE P4 Wappen
MESSAUFBAU STATIV
FILTER 30 30 30 35
User Login Stein

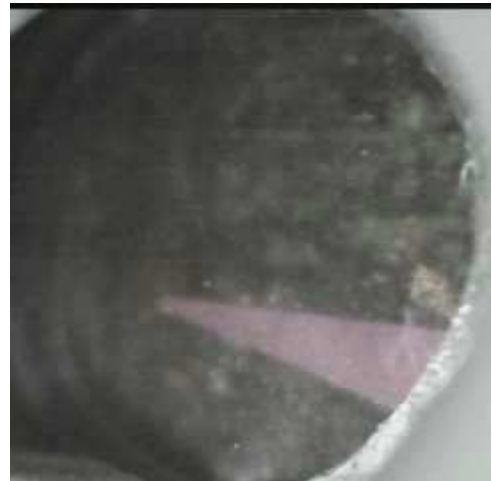


	ppm	±	Error
Ce	< LOD	:	366.801
La	< LOD	:	185.175
Ba	< LOD	:	177.492
Sb	< LOD	:	58.579
Sn	2108.230	±	59.128
Cd	23.533	±	12.211
Ag	< LOD	:	15.416
Bal	826530.813	±	1892.408
Nb	67.480	±	42.835
Zr	< LOD	:	199.543
Y	< LOD	:	52.302
Sr	176.769	±	11.601
Rb	< LOD	:	135.011
Th	< LOD	:	3336.816
Bi	< LOD	:	2087.824
Au	< LOD	:	66.699
As	12346.547	±	361.951
Se	< LOD	:	26.599
Pb	64693.848	±	1270.879
Hg	< LOD	:	36.416
Zn	174.246	±	17.616
Cu	350.857	±	33.311
Ni	< LOD	:	95.822
Co	< LOD	:	63.391
Fe	1252.673	±	104.967
Mn	271.874	±	97.171
Cr	< LOD	:	45.240
V	< LOD	:	34.731
Ti	< LOD	:	175.223
Ca	44447.918	±	900.469
K	5447.231	±	272.637
Al	2348.767	±	744.170
P	1983.618	±	143.891
Si	13866.325	±	570.109
Cl	3712.715	±	96.770
S	20196.564	±	445.928
Mg	< LOD	:	13814.716

RFAnalyse-Zertifikat

XL3t-69288

Reading No 8
Mode Mining
Time 2014-07-29 14:56
Duration 121.30
Units ppm
Sigma Value 2
Sequence Final
Flags
INV NR GNM Gm 19 RS
OBJEKT Enthauptung d Columba
MATERIAL Holz bemalt
ANALYSESTELLE P5 Pressbrokat
MESSAUFBAU STATIV
FILTER 30 30 30 35
User Login Stein



	ppm	±	Error
Ce	< LOD	:	141.282
La	< LOD	:	64.180
Ba	< LOD	:	68.406
Sb	< LOD	:	23.040
Sn	5971.561	±	73.260
Cd	76.900	±	8.209
Ag	14.855	±	4.362
Bal	912699.813	±	589.689
Nb	< LOD	:	14.403
Zr	< LOD	:	51.772
Y	< LOD	:	12.072
Sr	202.481	±	6.089
Rb	< LOD	:	27.861
Th	< LOD	:	750.705
Bi	< LOD	:	725.988
Au	196.324	±	21.833
As	2331.965	±	88.072
Se	< LOD	:	13.650
Pb	10813.756	±	147.893
Hg	< LOD	:	11.503
Zn	149.325	±	13.279
Cu	423.932	±	25.480
Ni	< LOD	:	43.985
Co	< LOD	:	65.087
Fe	5979.960	±	157.686
Mn	< LOD	:	165.693
Cr	49.466	±	18.960
V	< LOD	:	29.501
Ti	< LOD	:	128.581
Ca	27806.850	±	460.367
K	2741.815	±	230.928
Al	2532.529	±	546.868
P	1306.017	±	103.162
Si	14765.128	±	488.284
Cl	1772.712	±	43.015
S	10061.023	±	159.886
Mg	< LOD	:	7238.949

RFAnalyse-Zertifikat

XL3t-69288

Reading No 9
Mode Mining
Time 2014-07-29 15:04
Duration 121.68
Units ppm
Sigma Value 2
Sequence Final
Flags
INV NR GNM Gm 19 RS
OBJEKT Enthauptung d Columba
MATERIAL Holz bemalt
ANALYSESTELLE P6 Blattmetall auf Pressbrokat
MESSAUFBAU STATIV
FILTER 30 30 30 35
User Login Stein

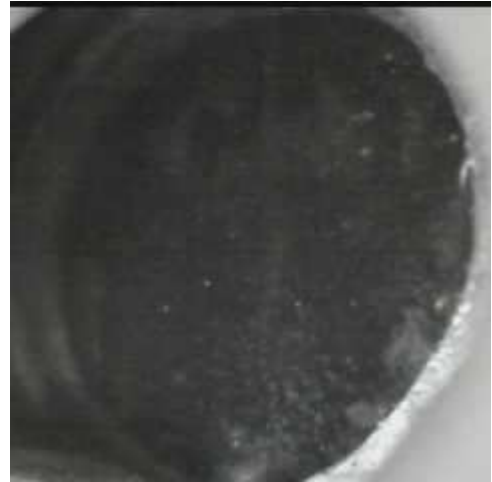


	ppm	±	Error
Ce	< LOD	:	145.771
La	< LOD	:	66.979
Ba	< LOD	:	71.161
Sb	< LOD	:	23.842
Sn	481.307	±	16.765
Cd	19.094	±	6.685
Ag	< LOD	:	6.293
Bal	886552.750	±	757.098
Nb	< LOD	:	19.425
Zr	< LOD	:	68.093
Y	< LOD	:	16.288
Sr	213.991	±	6.713
Rb	< LOD	:	43.539
Th	< LOD	:	976.486
Bi	< LOD	:	788.927
Au	742.179	±	35.754
As	4613.943	±	123.262
Se	< LOD	:	15.966
Pb	18247.164	±	246.100
Hg	< LOD	:	15.488
Zn	242.442	±	16.197
Cu	550.458	±	27.977
Ni	< LOD	:	41.438
Co	< LOD	:	64.212
Fe	5957.942	±	156.601
Mn	142.769	±	67.640
Cr	47.148	±	19.266
V	< LOD	:	35.685
Ti	< LOD	:	211.945
Ca	31350.445	±	459.880
K	3044.251	±	166.801
Al	3565.085	±	559.372
P	3280.099	±	133.535
Si	18193.748	±	518.455
Cl	1771.968	±	40.205
S	20962.430	±	298.067
Mg	< LOD	:	7682.773

RFAnalyse-Zertifikat

XL3t-69288

Reading No 10
Mode Mining
Time 2014-07-29 15:11
Duration 121.27
Units ppm
Sigma Value 2
Sequence Final
Flags
INV NR GNM Gm 19 RS
OBJEKT Enthauptung d Columba
MATERIAL Holz bemalt
ANALYSESTELLE P7 SCHUH
MESSAUFBAU STATIV
FILTER 30 30 30 35
User Login Stein



	ppm	±	Error
Ce	< LOD	:	129.365
La	< LOD	:	59.013
Ba	< LOD	:	62.845
Sb	< LOD	:	22.598
Sn	59.160	±	8.879
Cd	13.311	±	5.821
Ag	7.877	±	3.870
Bal	889472.438	±	754.913
Nb	25.497	±	13.834
Zr	< LOD	:	72.026
Y	< LOD	:	17.246
Sr	202.005	±	6.568
Rb	< LOD	:	41.011
Th	< LOD	:	1028.086
Bi	< LOD	:	923.586
Au	< LOD	:	25.313
As	5545.334	±	136.284
Se	< LOD	:	18.429
Pb	20092.262	±	278.887
Hg	< LOD	:	13.717
Zn	138.764	±	11.826
Cu	917.763	±	35.490
Ni	< LOD	:	39.926
Co	< LOD	:	35.120
Fe	380.366	±	51.728
Mn	< LOD	:	115.913
Cr	< LOD	:	37.147
V	< LOD	:	25.806
Ti	< LOD	:	99.683
Ca	22543.279	±	362.226
K	784.306	±	102.440
Al	2366.826	±	550.683
P	1866.275	±	132.016
Si	10754.094	±	413.101
Cl	2114.651	±	47.071
S	31244.252	±	467.193
Mg	11455.047	±	6162.666