

Certificate of Verification

XL3t-69288

Reading No 1
Mode Mining
Time 2014-06-26 10:53
Duration 121.58
Units ppm
Sigma Value 2
Sequence Final
Flags
INV NR GM 16
OBJEKT TAFELGEMAELDE
MATERIAL HOLZ METALL FASSUNG
ANALYSESTELLE P1 BORTE
MESSAUFBAU STATIV ANLIEGEND
FILTER m30lo30hi30li30
User Login Raquet



	ppm	±	Error
Ce	< LOD	:	202.551
La	< LOD	:	115.207
Ba	< LOD	:	119.310
Sb	< LOD	:	47.757
Sn	33.615	±	12.368
Cd	< LOD	:	11.031
Ag	79.281	±	8.043
Bal	889423.000	±	931.541
Nb	42.119	±	21.847
Zr	< LOD	:	109.515
Y	< LOD	:	27.951
Sr	268.816	±	9.785
Rb	< LOD	:	55.955
Th	< LOD	:	1519.715
Bi	< LOD	:	1512.009
Au	4724.367	±	108.192
As	9025.309	±	214.750
Se	< LOD	:	25.081
Pb	31746.332	±	508.162
Hg	< LOD	:	23.747
Zn	231.015	±	21.677
Cu	557.232	±	32.768
Ni	< LOD	:	67.835
Co	< LOD	:	45.416
Fe	451.122	±	64.335
Mn	217.267	±	83.070
Cr	79.226	±	24.615
V	< LOD	:	25.717
Ti	< LOD	:	134.202
Ca	14582.666	±	299.800
K	1650.470	±	148.091
Al	1730.450	±	529.339
P	22957.527	±	444.423
Si	4546.654	±	361.672
Cl	1730.761	±	45.236
S	15826.503	±	289.057
Mg	< LOD	:	8147.157

Certificate of Verification

XL3t-69288

Reading No 2
Mode Mining
Time 2014-06-26 10:58
Duration 120.16
Units ppm
Sigma Value 2
Sequence Final
Flags
INV NR GM 16
OBJEKT TAFELGEMAELDE
MATERIAL HOLZ METALL FASSUNG
ANALYSESTELLE P2 GEWAND
MESSAUFBAU STATIV ANLIEGEND
FILTER m30lo30hi30li30
User Login Raquet



	ppm	±	Error
Ce	< LOD	:	296.544
La	164.803	±	90.371
Ba	231.166	±	96.227
Sb	< LOD	:	53.118
Sn	52.587	±	17.237
Cd	< LOD	:	15.625
Ag	< LOD	:	16.641
Bal	854755.563	±	1525.402
Nb	< LOD	:	40.640
Zr	< LOD	:	135.919
Y	< LOD	:	36.352
Sr	54.183	±	19.616
Rb	< LOD	:	67.880
Th	< LOD	:	1868.782
Bi	< LOD	:	1564.753
Au	< LOD	:	167.879
As	11110.968	±	273.663
Se	< LOD	:	50.944
Pb	28518.916	±	545.149
Hg	16661.170	±	293.000
Zn	1238.958	±	65.533
Cu	183.650	±	29.855
Ni	98.498	±	50.493
Co	105.090	±	41.571
Fe	221.082	±	77.958
Mn	339.568	±	114.224
Cr	< LOD	:	42.607
V	< LOD	:	35.999
Ti	< LOD	:	184.208
Ca	13696.192	±	315.854
K	2344.469	±	185.408
Al	5167.401	±	853.445
P	17411.736	±	398.191
Si	5725.566	±	445.409
Cl	2099.882	±	59.528
S	39428.070	±	721.293
Mg	< LOD	:	12462.811

Certificate of Verification

XL3t-69288

Reading No 3
Mode Mining
Time 2014-06-26 11:02
Duration 121.61
Units ppm
Sigma Value 2
Sequence Final
Flags
INV NR GM 16
OBJEKT TAFELGEMAELDE
MATERIAL HOLZ METALL FASSUNG
ANALYSESTELLE P3 GEWAND
MESSAUFBAU STATIV ANLIEGEND
FILTER m30lo30hi30li30
User Login Raquet



	ppm	±	Error
Ce	< LOD	:	176.077
La	< LOD	:	80.226
Ba	< LOD	:	97.488
Sb	< LOD	:	37.817
Sn	33.274	±	10.703
Cd	< LOD	:	9.534
Ag	< LOD	:	5.949
Bal	864428.813	±	992.934
Nb	31.821	±	16.129
Zr	< LOD	:	83.267
Y	< LOD	:	20.584
Sr	331.749	±	9.473
Rb	< LOD	:	39.599
Th	< LOD	:	1190.157
Bi	< LOD	:	1255.240
Au	< LOD	:	30.904
As	6234.239	±	162.684
Se	< LOD	:	20.048
Pb	23426.326	±	356.383
Hg	< LOD	:	17.643
Zn	785.305	±	29.946
Cu	1209.281	±	44.925
Ni	< LOD	:	49.507
Co	< LOD	:	39.693
Fe	550.917	±	62.750
Mn	197.158	±	76.553
Cr	< LOD	:	30.156
V	< LOD	:	23.953
Ti	< LOD	:	125.761
Ca	45264.703	±	699.029
K	5955.568	±	207.620
Al	6310.396	±	767.028
P	1746.136	±	139.464
Si	12022.818	±	473.954
Cl	3913.217	±	77.865
S	27539.611	±	441.394
Mg	< LOD	:	10602.557

Supervised By: _____

Certificate of Verification

XL3t-69288

Reading No 4
Mode Mining
Time 2014-06-26 11:06
Duration 121.51
Units ppm
Sigma Value 2
Sequence Final
Flags
INV NR GM 16
OBJEKT TAFELGEMAELDE
MATERIAL HOLZ METALL FASSUNG
ANALYSESTELLE P4 GEWAND
MESSAUFBAU STATIV ANLIEGEND
FILTER m30lo30hi30li30
User Login Raquet



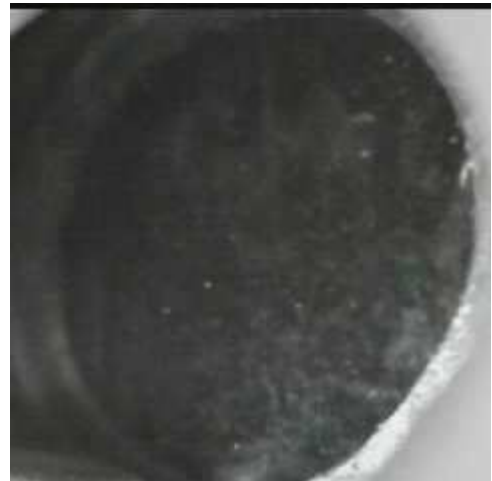
	ppm	±	Error
Ce	< LOD	:	297.788
La	157.790	±	91.239
Ba	163.136	±	96.563
Sb	< LOD	:	46.102
Sn	27.500	±	16.688
Cd	< LOD	:	15.662
Ag	< LOD	:	9.948
Bal	868416.875	±	1458.168
Nb	< LOD	:	43.517
Zr	< LOD	:	145.283
Y	< LOD	:	38.875
Sr	97.392	±	19.334
Rb	< LOD	:	74.790
Th	< LOD	:	1999.363
Bi	< LOD	:	1555.884
Au	< LOD	:	159.233
As	11369.186	±	285.467
Se	< LOD	:	53.137
Pb	32869.500	±	624.505
Hg	14891.771	±	267.094
Zn	1662.021	±	70.787
Cu	443.938	±	37.980
Ni	158.025	±	51.823
Co	129.643	±	44.255
Fe	504.629	±	87.001
Mn	368.669	±	113.437
Cr	< LOD	:	46.695
V	< LOD	:	58.179
Ti	< LOD	:	193.776
Ca	32572.430	±	622.452
K	6552.281	±	290.812
Al	3043.008	±	678.618
P	2090.434	±	128.959
Si	5006.978	±	338.626
Cl	2887.495	±	68.993
S	16331.402	±	306.955
Mg	< LOD	:	9713.307

Supervised By: _____

Certificate of Verification

XL3t-69288

Reading No 5
Mode Mining
Time 2014-06-26 11:10
Duration 120.49
Units ppm
Sigma Value 2
Sequence Final
Flags
INV NR GM 16
OBJEKT TAFELGEMAELDE
MATERIAL HOLZ METALL FASSUNG
ANALYSESTELLE P5 GEWAND
MESSAUFBAU STATIV ANLIEGEND
FILTER m30lo30hi30li30
User Login Raquet



	ppm	±	Error
Ce	< LOD	:	204.072
La	< LOD	:	93.802
Ba	< LOD	:	104.438
Sb	< LOD	:	32.849
Sn	< LOD	:	17.836
Cd	< LOD	:	12.551
Ag	< LOD	:	7.165
Bal	832836.063	±	1435.359
Nb	< LOD	:	39.402
Zr	< LOD	:	106.921
Y	< LOD	:	25.744
Sr	179.273	±	8.715
Rb	< LOD	:	46.526
Th	< LOD	:	1466.902
Bi	< LOD	:	1400.343
Au	< LOD	:	35.782
As	1352.032	±	156.852
Se	< LOD	:	24.776
Pb	21053.514	±	365.189
Hg	< LOD	:	20.215
Zn	< LOD	:	61.608
Cu	96838.094	±	1263.550
Ni	< LOD	:	53.326
Co	145.394	±	41.384
Fe	2191.263	±	93.742
Mn	358.181	±	74.627
Cr	< LOD	:	31.185
V	< LOD	:	31.182
Ti	231.643	±	113.178
Ca	11114.085	±	218.706
K	3204.456	±	171.744
Al	4185.872	±	591.217
P	1360.131	±	83.671
Si	14087.054	±	421.643
Cl	1722.366	±	37.363
S	9124.163	±	142.190
Mg	< LOD	:	8498.160

Thermo Fisher Scientific
900 Middlesex Turnpike
Billerica, MA 01821

Certificate of Verification

XL3t-69288

Reading No 6
Mode Mining
Time 2014-06-26 11:17
Duration 121.94
Units ppm
Sigma Value 2
Sequence Final
Flags
INV NR GM 16
OBJEKT TAFELGEMAELDE
MATERIAL HOLZ METALL FASSUNG
ANALYSESTELLE P6 RAND
MESSAUFBAU STATIV ANLIEGEND
FILTER m30lo30hi30li30
User Login Raquet



	ppm	±	Error
Ce	< LOD	:	249.613
La	< LOD	:	128.190
Ba	< LOD	:	201.523
Sb	< LOD	:	56.733
Sn	33.551	±	14.601
Cd	< LOD	:	13.265
Ag	< LOD	:	8.488
Bal	869980.875	±	1200.716
Nb	57.613	±	28.890
Zr	< LOD	:	140.799
Y	< LOD	:	36.310
Sr	274.249	±	11.107
Rb	< LOD	:	77.045
Th	< LOD	:	1931.765
Bi	< LOD	:	1617.182
Au	< LOD	:	46.460
As	10408.675	±	266.115
Se	< LOD	:	29.843
Pb	43336.773	±	731.148
Hg	< LOD	:	25.644
Zn	364.748	±	22.431
Cu	1208.208	±	50.898
Ni	< LOD	:	61.998
Co	< LOD	:	75.882
Fe	4498.968	±	167.258
Mn	950.745	±	114.924
Cr	39.257	±	25.469
V	< LOD	:	64.474
Ti	< LOD	:	273.009
Ca	16031.132	±	332.341
K	1667.383	±	154.879
Al	3568.945	±	662.276
P	2162.563	±	140.870
Si	15984.303	±	550.713
Cl	1831.331	±	50.391
S	27572.852	±	508.734
Mg	< LOD	:	11068.984

Supervised By: _____

Certificate of Verification

XL3t-69288

Reading No 7
Mode Mining
Time 2014-06-26 11:23
Duration 120.71
Units ppm
Sigma Value 2
Sequence Final
Flags
INV NR GM 16
OBJEKT TAFELGEMAELDE RUECKSEITE
MATERIAL HOLZ METALL FASSUNG
ANALYSESTELLE P7 NIMBUS
MESSAUFBAU STATIV ANLIEGEND
FILTER m30lo30hi30li30
User Login Raquet



	ppm	±	Error
Ce	< LOD	:	228.677
La	< LOD	:	104.269
Ba	< LOD	:	110.949
Sb	< LOD	:	40.823
Sn	4113.538	±	79.399
Cd	43.172	±	10.966
Ag	< LOD	:	11.775
Bal	785967.000	±	1760.086
Nb	58.376	±	27.097
Zr	< LOD	:	134.598
Y	< LOD	:	34.147
Sr	128.111	±	8.075
Rb	< LOD	:	66.112
Th	< LOD	:	1869.676
Bi	< LOD	:	1749.825
Au	< LOD	:	44.074
As	6238.382	±	221.541
Se	< LOD	:	33.572
Pb	40341.402	±	677.888
Hg	< LOD	:	25.405
Zn	70.258	±	12.920
Cu	916.806	±	45.631
Ni	< LOD	:	80.444
Co	< LOD	:	159.208
Fe	30568.424	±	599.181
Mn	1260.341	±	121.112
Cr	67.648	±	28.383
V	< LOD	:	76.210
Ti	532.484	±	183.069
Ca	21248.527	±	414.200
K	4597.740	±	233.885
Al	14118.584	±	1032.520
P	2317.313	±	134.310
Si	69711.625	±	1401.078
Cl	2007.328	±	50.922
S	15692.999	±	286.422
Mg	< LOD	:	11086.198

Certificate of Verification

XL3t-69288

Reading No 8
Mode Mining
Time 2014-06-26 11:27
Duration 121.58
Units ppm
Sigma Value 2
Sequence Final
Flags
INV NR GM 16
OBJEKT TAFELGEMAELDE RUECKSEITE
MATERIAL HOLZ METALL FASSUNG
ANALYSESTELLE P8 NIMBUS
MESSAUFBAU STATIV ANLIEGEND
FILTER m30lo30hi30li30
User Login Raquet



	ppm	±	Error
Ce	< LOD	:	324.038
La	165.665	±	98.876
Ba	414.270	±	107.122
Sb	< LOD	:	82.601
Sn	8680.430	±	182.934
Cd	56.677	±	15.372
Ag	< LOD	:	19.497
Bal	722426.688	±	2847.831
Nb	96.277	±	43.440
Zr	< LOD	:	205.103
Y	< LOD	:	54.200
Sr	79.848	±	12.230
Rb	< LOD	:	106.205
Th	< LOD	:	2791.714
Bi	< LOD	:	2450.150
Au	< LOD	:	90.219
As	7737.096	±	313.487
Se	< LOD	:	30.929
Pb	63608.102	±	1208.039
Hg	1764.856	±	59.159
Zn	230.999	±	28.269
Cu	934.177	±	53.690
Ni	< LOD	:	122.547
Co	< LOD	:	175.102
Fe	25169.547	±	586.767
Mn	548.066	±	133.464
Cr	97.667	±	33.968
V	< LOD	:	140.244
Ti	750.858	±	382.105
Ca	40187.832	±	759.331
K	5421.572	±	269.887
Al	17478.102	±	1314.238
P	5366.591	±	200.695
Si	76400.367	±	1648.711
Cl	1972.244	±	56.720
S	20127.998	±	402.102
Mg	< LOD	:	12707.986