

**Certificate of Verification**

XL3t-69288

Reading No 9  
Mode Mining  
Time 2014-06-26 11:33  
Duration 120.06  
Units ppm  
Sigma Value 2  
Sequence Final  
Flags  
INV NR GM 15  
OBJEKT TAFELGEMAELDE  
MATERIAL HOLZ METALL FASSUNG  
ANALYSESTELLE P1 GEWAND  
MESSAUFBAU STATIV ANLIEGEND  
FILTER m30lo30hi30li30  
User Login Raquet



	ppm	±	Error
Ce	< LOD	:	402.902
La	< LOD	:	180.117
Ba	< LOD	:	126.509
Sb	< LOD	:	40.177
Sn	46.491	±	15.252
Cd	< LOD	:	13.791
Ag	< LOD	:	8.747
Bal	779398.500	±	2144.218
Nb	< LOD	:	44.787
Zr	< LOD	:	147.308
Y	< LOD	:	38.707
Sr	173.334	±	14.628
Rb	< LOD	:	78.129
Th	< LOD	:	2045.925
Bi	< LOD	:	1662.370
Au	< LOD	:	108.932
As	10867.411	±	282.031
Se	< LOD	:	34.060
Pb	40930.281	±	733.087
Hg	6501.612	±	126.682
Zn	2362.041	±	73.881
Cu	486.616	±	36.428
Ni	81.030	±	45.507
Co	< LOD	:	98.312
Fe	2223.841	±	126.516
Mn	371.322	±	101.194
Cr	< LOD	:	50.514
V	< LOD	:	35.396
Ti	< LOD	:	168.529
Ca	51061.902	±	875.694
K	6862.528	±	276.243
Al	40597.957	±	1998.589
P	14865.343	±	344.947
Si	10994.252	±	541.561
Cl	2722.987	±	67.749
S	29280.254	±	514.540
Mg	< LOD	:	12437.059

Supervised By: \_\_\_\_\_

**Certificate of Verification**

XL3t-69288

Reading No 10  
Mode Mining  
Time 2014-06-26 11:36  
Duration 121.81  
Units ppm  
Sigma Value 2  
Sequence Final  
Flags  
INV NR GM 15  
OBJEKT TAFELGEMAELEN  
MATERIAL HOLZ METALL FASSUNG  
ANALYSESTELLE P2 KRONENBAND  
MESSAUFBAU STATIV ANLIEGEND  
FILTER m30lo30hi30li30  
User Login Raquet



	ppm	±	Error
Ce	< LOD	:	197.940
La	< LOD	:	90.328
Ba	< LOD	:	96.445
Sb	< LOD	:	41.740
Sn	41.956	±	12.316
Cd	< LOD	:	10.799
Ag	53.391	±	7.187
Bal	865958.500	±	1071.056
Nb	< LOD	:	31.991
Zr	< LOD	:	107.610
Y	< LOD	:	26.782
Sr	186.314	±	8.489
Rb	< LOD	:	54.262
Th	< LOD	:	1501.692
Bi	< LOD	:	1162.434
Au	3287.908	±	87.277
As	8092.090	±	199.818
Se	< LOD	:	22.925
Pb	30383.389	±	471.366
Hg	< LOD	:	34.541
Zn	244.808	±	22.033
Cu	821.711	±	38.629
Ni	< LOD	:	51.262
Co	< LOD	:	47.250
Fe	869.051	±	75.846
Mn	140.636	±	78.038
Cr	92.924	±	19.532
V	< LOD	:	25.039
Ti	< LOD	:	116.830
Ca	18573.875	±	341.410
K	2911.650	±	161.414
Al	4638.980	±	654.517
P	25112.908	±	458.724
Si	16803.105	±	569.656
Cl	2303.875	±	53.545
S	19383.262	±	330.116
Mg	< LOD	:	9057.033

Supervised By: \_\_\_\_\_

Thermo Fisher Scientific  
900 Middlesex Turnpike  
Billerica, MA 01821

**Certificate of Verification**

XL3t-69288

Reading No 11  
Mode Mining  
Time 2014-06-26 11:40  
Duration 121.94  
Units ppm  
Sigma Value 2  
Sequence Final  
Flags  
INV NR GM 15  
OBJEKT TAFELGEMAELDE  
MATERIAL HOLZ METALL FASSUNG  
ANALYSESTELLE P3 HINTERGRUND  
MESSAUFBAU STATIV ANLIEGEND  
FILTER m30lo30hi30li30  
User Login Raquet



	ppm	±	Error
Ce	< LOD	:	136.272
La	< LOD	:	62.747
Ba	< LOD	:	67.651
Sb	< LOD	:	25.166
Sn	< LOD	:	14.899
Cd	< LOD	:	11.829
Ag	15.034	±	4.430
Bal	770423.375	±	1132.806
Nb	< LOD	:	3.369
Zr	< LOD	:	13.578
Y	< LOD	:	2.613
Sr	424.491	±	7.290
Rb	22.418	±	6.009
Th	< LOD	:	200.009
Bi	< LOD	:	164.675
Au	4489.717	±	64.230
As	130.935	±	17.119
Se	< LOD	:	11.068
Pb	486.753	±	14.738
Hg	< LOD	:	9.910
Zn	91.456	±	15.032
Cu	92.032	±	14.695
Ni	< LOD	:	37.442
Co	< LOD	:	47.146
Fe	3417.725	±	97.473
Mn	< LOD	:	144.118
Cr	139.780	±	22.152
V	< LOD	:	27.482
Ti	< LOD	:	137.137
Ca	168889.250	±	1009.916
K	962.710	±	135.411
Al	1720.812	±	882.329
P	33232.301	±	379.895
Si	1846.712	±	464.686
Cl	1630.574	±	42.580
S	11892.324	±	135.451
Mg	< LOD	:	12160.425

Supervised By: \_\_\_\_\_

**Certificate of Verification**

XL3t-69288

Reading No 12  
Mode Mining  
Time 2014-06-26 11:54  
Duration 122.13  
Units ppm  
Sigma Value 2  
Sequence Final  
Flags  
INV NR GM 15  
OBJEKT TAFELGEMAELDE  
MATERIAL HOLZ METALL FASSUNG  
ANALYSESTELLE P4 HINTERGRUND  
MESSAUFBAU STATIV ANLIEGEND  
FILTER m30lo30hi30li30  
User Login Raquet



	ppm	±	Error
Ce	< LOD	:	160.807
La	< LOD	:	73.558
Ba	< LOD	:	131.151
Sb	< LOD	:	29.940
Sn	43.851	±	10.431
Cd	< LOD	:	9.047
Ag	63.084	±	6.470
BaI	804400.500	±	1159.032
Nb	< LOD	:	11.675
Zr	< LOD	:	45.236
Y	< LOD	:	10.709
Sr	347.012	±	7.991
Rb	61.936	±	15.173
Th	< LOD	:	661.951
Bi	< LOD	:	529.483
Au	6040.959	±	96.013
As	956.133	±	69.492
Se	< LOD	:	17.671
Pb	8012.724	±	103.836
Hg	< LOD	:	13.757
Zn	49.021	±	17.251
Cu	312.612	±	22.562
Ni	< LOD	:	43.665
Co	< LOD	:	67.905
Fe	6817.649	±	159.839
Mn	< LOD	:	122.112
Cr	82.953	±	25.144
V	56.285	±	33.858
Ti	1907.511	±	194.068
Ca	102082.852	±	969.724
K	3661.110	±	174.200
Al	8840.604	±	911.558
P	20881.896	±	312.336
Si	24801.742	±	682.871
Cl	1725.366	±	41.149
S	8854.144	±	123.735
Mg	< LOD	:	10076.954

Supervised By: \_\_\_\_\_

**Certificate of Verification**

XL3t-69288

Reading No 13  
Mode Mining  
Time 2014-06-26 11:58  
Duration 122.28  
Units ppm  
Sigma Value 2  
Sequence Final  
Flags 3mm  
INV NR GM 15  
OBJEKT TAFELGEMAELDE  
MATERIAL HOLZ METALL FASSUNG  
ANALYSESTELLE P4 HINTERGRUND  
MESSAUFBAU STATIV ANLIEGEND  
FILTER m30lo30hi30li30  
User Login Raquet



	ppm	±	Error
Ce	< LOD	:	298.535
La	< LOD	:	191.241
Ba	< LOD	:	324.466
Sb	< LOD	:	103.438
Sn	94.251	±	34.223
Cd	< LOD	:	27.916
Ag	68.809	±	16.031
BaI	787652.563	±	2083.421
Nb	< LOD	:	22.571
Zr	< LOD	:	84.213
Y	< LOD	:	20.992
Sr	324.882	±	13.307
Rb	71.359	±	28.552
Th	< LOD	:	1179.792
Bi	< LOD	:	984.045
Au	6385.326	±	169.090
As	1046.572	±	120.001
Se	< LOD	:	30.179
Pb	11179.130	±	229.571
Hg	< LOD	:	27.576
Zn	< LOD	:	42.753
Cu	313.676	±	37.232
Ni	< LOD	:	66.075
Co	< LOD	:	117.310
Fe	7285.798	±	283.064
Mn	< LOD	:	274.277
Cr	74.270	±	41.295
V	< LOD	:	75.470
Ti	2003.219	±	244.739
Ca	98608.555	±	1553.715
K	4115.459	±	267.044
Al	10724.907	±	1232.667
P	24450.211	±	503.368
Si	33068.324	±	1085.064
Cl	2439.344	±	80.331
S	10063.381	±	202.049
Mg	< LOD	:	12744.455

**Certificate of Verification**

XL3t-69288

Reading No 14  
Mode Mining  
Time 2014-06-26 12:02  
Duration 121.86  
Units ppm  
Sigma Value 2  
Sequence Final  
Flags  
INV NR GM 15  
OBJEKT TAFELGEMAELDE  
MATERIAL HOLZ METALL FASSUNG  
ANALYSESTELLE P5 HINTERGRUND  
MESSAUFBAU STATIV ANLIEGEND  
FILTER m30lo30hi30li30  
User Login Raquet



	ppm	±	Error
Ce	< LOD	:	140.385
La	< LOD	:	64.723
Ba	< LOD	:	69.660
Sb	< LOD	:	29.955
Sn	< LOD	:	20.730
Cd	< LOD	:	12.305
Ag	23.156	±	4.920
BaI	835776.438	±	890.573
Nb	< LOD	:	3.682
Zr	< LOD	:	17.321
Y	< LOD	:	3.760
Sr	258.332	±	5.441
Rb	17.488	±	5.323
Th	< LOD	:	236.949
Bi	< LOD	:	171.100
Au	1904.382	±	39.357
As	< LOD	:	28.672
Se	< LOD	:	8.063
Pb	826.300	±	18.896
Hg	11.956	±	4.392
Zn	54.408	±	11.294
Cu	129.412	±	15.778
Ni	< LOD	:	36.890
Co	< LOD	:	65.285
Fe	8597.768	±	152.765
Mn	< LOD	:	91.516
Cr	104.300	±	21.178
V	67.619	±	24.700
Ti	2440.824	±	152.715
Ca	65440.043	±	506.185
K	4827.671	±	164.564
Al	11724.734	±	976.724
P	25972.736	±	322.715
Si	30801.896	±	740.289
Cl	878.289	±	34.257
S	10142.295	±	120.198
Mg	< LOD	:	10638.136

Supervised By: \_\_\_\_\_

**Certificate of Verification**

XL3t-69288

Reading No 15  
Mode Mining  
Time 2014-06-26 12:08  
Duration 120.08  
Units ppm  
Sigma Value 2  
Sequence Final  
Flags  
INV NR GM 15  
OBJEKT TAFELGEMAELDE  
MATERIAL HOLZ METALL FASSUNG  
ANALYSESTELLE P6 KRONE  
MESSAUFBAU STATIV ANLIEGEND  
FILTER m30lo30hi30li30  
User Login Raquet



	ppm	±	Error
Ce	< LOD	:	203.416
La	< LOD	:	93.294
Ba	< LOD	:	120.475
Sb	< LOD	:	41.315
Sn	30.814	±	12.367
Cd	< LOD	:	11.235
Ag	53.032	±	7.359
Bal	866640.875	±	1063.665
Nb	< LOD	:	49.604
Zr	< LOD	:	106.616
Y	< LOD	:	26.416
Sr	266.254	±	9.637
Rb	< LOD	:	53.478
Th	< LOD	:	1668.052
Bi	< LOD	:	1158.314
Au	3589.880	±	91.831
As	7749.522	±	199.283
Se	< LOD	:	23.378
Pb	29349.041	±	475.331
Hg	< LOD	:	25.668
Zn	211.111	±	22.143
Cu	4722.241	±	109.821
Ni	< LOD	:	53.390
Co	< LOD	:	60.050
Fe	2791.075	±	119.438
Mn	139.376	±	78.815
Cr	75.957	±	23.215
V	< LOD	:	31.307
Ti	419.491	±	116.899
Ca	29256.855	±	501.984
K	3290.801	±	178.129
Al	2762.254	±	702.052
P	14290.328	±	317.618
Si	16319.130	±	609.211
Cl	3045.434	±	69.961
S	14925.873	±	269.434
Mg	< LOD	:	10363.367

Supervised By: \_\_\_\_\_

**Certificate of Verification**

XL3t-69288

Reading No 16  
Mode Mining  
Time 2014-06-26 12:12  
Duration 121.26  
Units ppm  
Sigma Value 2  
Sequence Final  
Flags  
INV NR GM 15  
OBJEKT TAFELGEMAELDE  
MATERIAL HOLZ METALL FASSUNG  
ANALYSESTELLE P7 THRONBEHANG  
MESSAUFBAU STATIV ANLIEGEND  
FILTER m30lo30hi30li30  
User Login Raquet



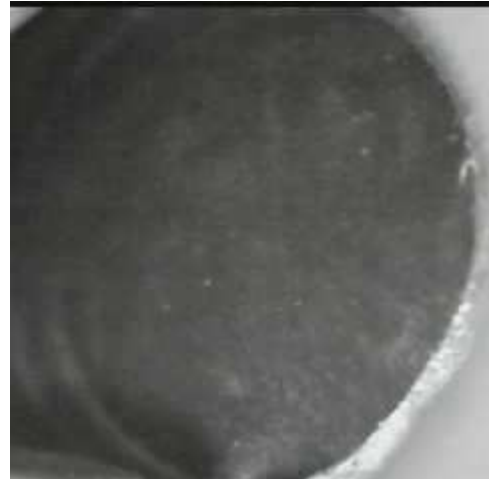
	ppm	±	Error
Ce	< LOD	:	208.000
La	< LOD	:	95.225
Ba	< LOD	:	122.216
Sb	< LOD	:	36.142
Sn	32.335	±	12.471
Cd	< LOD	:	11.256
Ag	12.763	±	5.979
Bal	892623.688	±	896.335
Nb	< LOD	:	50.399
Zr	< LOD	:	105.465
Y	< LOD	:	26.163
Sr	304.574	±	10.283
Rb	60.761	±	35.410
Th	< LOD	:	1575.512
Bi	< LOD	:	1137.518
Au	3894.872	±	95.662
As	8145.933	±	200.717
Se	< LOD	:	23.129
Pb	28363.164	±	457.550
Hg	< LOD	:	23.288
Zn	231.355	±	20.981
Cu	238.195	±	24.210
Ni	< LOD	:	52.746
Co	< LOD	:	52.546
Fe	1100.391	±	82.101
Mn	131.353	±	78.391
Cr	114.813	±	21.887
V	< LOD	:	36.776
Ti	< LOD	:	130.169
Ca	16877.635	±	325.083
K	2102.750	±	142.596
Al	3020.821	±	614.880
P	20996.264	±	420.213
Si	6099.070	±	407.744
Cl	1604.028	±	45.698
S	14045.266	±	261.857
Mg	< LOD	:	8572.105



**Certificate of Verification**

XL3t-69288

Reading No 17  
Mode Mining  
Time 2014-06-26 12:25  
Duration 120.58  
Units ppm  
Sigma Value 2  
Sequence Final  
Flags  
INV NR GM 15  
OBJEKT TAFELGEMAELDE RUECKSEITE  
MATERIAL HOLZ METALL FASSUNG  
ANALYSESTELLE P7 THRONBEHANG  
MESSAUFBAU STATIV ANLIEGEND  
FILTER m30lo30hi30li30  
User Login Raquet



	ppm	±	Error
Ce	< LOD	:	172.772
La	< LOD	:	79.081
Ba	< LOD	:	87.469
Sb	< LOD	:	41.480
Sn	2035.518	±	40.185
Cd	29.865	±	8.228
Ag	10.226	±	5.066
Bal	829595.438	±	1201.948
Nb	< LOD	:	26.114
Zr	< LOD	:	90.219
Y	< LOD	:	22.185
Sr	129.447	±	6.378
Rb	< LOD	:	48.070
Th	< LOD	:	1282.341
Bi	< LOD	:	1134.683
Au	< LOD	:	32.701
As	4296.006	±	150.439
Se	< LOD	:	18.780
Pb	24853.230	±	371.064
Hg	< LOD	:	21.493
Zn	51.747	±	13.759
Cu	4851.830	±	108.492
Ni	< LOD	:	49.125
Co	< LOD	:	113.363
Fe	19209.631	±	367.817
Mn	732.328	±	95.865
Cr	41.819	±	23.857
V	< LOD	:	98.503
Ti	450.217	±	223.997
Ca	32503.115	±	499.151
K	2997.413	±	172.927
Al	8332.896	±	841.776
P	2167.968	±	129.994
Si	49454.523	±	1018.627
Cl	2614.260	±	55.769
S	15618.167	±	249.099
Mg	< LOD	:	14691.797

Supervised By: \_\_\_\_\_

**Certificate of Verification**

XL3t-69288

Reading No 18  
Mode Mining  
Time 2014-06-26 12:30  
Duration 121.83  
Units ppm  
Sigma Value 2  
Sequence Final  
Flags  
INV NR GM 15  
OBJEKT TAFELGEMAELDE RUECKSEITE  
MATERIAL HOLZ METALL FASSUNG  
ANALYSESTELLE P9 NIMBUS  
MESSAUFBAU STATIV ANLIEGEND  
FILTER m30lo30hi30li30  
User Login Raquet



	ppm	±	Error
Ce	< LOD	:	130.300
La	< LOD	:	60.390
Ba	< LOD	:	65.288
Sb	27.033	±	15.736
Sn	15.714	±	8.202
Cd	10.634	±	5.972
Ag	< LOD	:	5.812
Bal	873999.625	±	743.469
Nb	< LOD	:	11.100
Zr	< LOD	:	43.063
Y	< LOD	:	9.146
Sr	132.106	±	4.583
Rb	< LOD	:	19.301
Th	< LOD	:	589.746
Bi	< LOD	:	580.671
Au	< LOD	:	18.018
As	1783.477	±	69.095
Se	< LOD	:	12.147
Pb	7276.592	±	94.196
Hg	< LOD	:	15.560
Zn	< LOD	:	22.306
Cu	16163.236	±	209.345
Ni	< LOD	:	35.920
Co	< LOD	:	90.381
Fe	16706.658	±	249.793
Mn	452.223	±	71.341
Cr	35.864	±	19.310
V	< LOD	:	71.526
Ti	404.699	±	174.240
Ca	36132.059	±	408.694
K	2438.603	±	141.040
Al	4001.670	±	556.743
P	681.907	±	82.427
Si	29797.313	±	610.377
Cl	1361.713	±	31.090
S	8566.918	±	111.832
Mg	< LOD	:	12697.115

Supervised By: \_\_\_\_\_