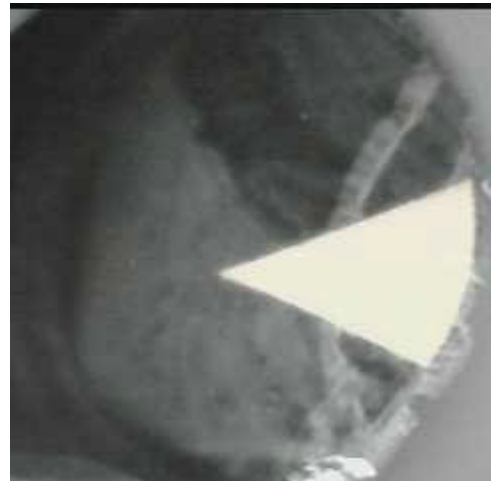


mRFA -Ergebnisse

XL3t-69288

Reading No 1
Mode Mining
Time 2021-09-30 14:40
Duration 121.29
Units ppm
Sigma Value 2
Sequence Final
Flags
INV NR Gm1244
OBJEKT TAFELGEMAELEN
MATERIAL HOLZ METALL FASSUNG
ANALYSESTELLE P1 HINTERGRUND ORG.
MESSAUFBAU STATIV
FILTER m30lo30hi30li30
User Login Raquet



Ele	ppm	+/-	$\pm 2\sigma$
Mg	1.000	+/-	13765.269
Al	1795.565	+/-	734.286
Bal	809621.438	+/-	1839.121
Si	9652.623	+/-	442.320
P	1161.182	+/-	125.975
S	20524.172	+/-	355.553
Cl	1420.833	+/-	42.916
K	395.405	+/-	128.079
Ca	44147.156	+/-	703.138
Ti	1.000	+/-	162.360
V	1.000	+/-	31.545
Cr	445.482	+/-	31.646
Mn	145.621	+/-	81.761
Fe	596.952	+/-	70.071
Co	1.000	+/-	53.046
Ni	1.000	+/-	59.939
Cu	53753.434	+/-	879.125
Zn	748.031	+/-	47.496
As	8473.394	+/-	278.209
Se	1.000	+/-	30.230
Rb	1.000	+/-	52.332
Sr	234.211	+/-	11.407
Y	1.000	+/-	27.371
Zr	1.000	+/-	105.779
Nb	64.075	+/-	31.859
Ag	1.000	+/-	7.245
Cd	1.000	+/-	8.976
Sn	24.782	+/-	14.313
Sb	95.012	+/-	28.489
Ba	1.000	+/-	117.511
La	1.000	+/-	110.144
Ce	-339.000	+/-	168.818
Au	161.570	+/-	48.817
Hg	1.000	+/-	21.183
Pb	46539.059	+/-	847.866
Bi	1.000	+/-	1487.013
Th	1.000	+/-	1472.332

mRFA -Ergebnisse

XL3t-69288

Reading No 2
Mode Mining
Time 2021-09-30 14:46
Duration 120.45
Units ppm
Sigma Value 2
Sequence Final
Flags 3mm
INV NR Gm1244
OBJEKT TAFELGEMAELENDE
MATERIAL HOLZ METALL FASSUNG
ANALYSESTELLE P2 HINTERGRUND ORG.
MESSAUFBAU STATIV
FILTER m30lo30hi30li30
User Login Raquet



Ele	ppm	+/-	$\pm 2\sigma$
Mg	1.000	+/-	12336.443
Al	3587.922	+/-	930.414
Bal	870073.375	+/-	1510.700
Si	12907.729	+/-	722.918
P	2896.552	+/-	228.837
S	37575.988	+/-	857.620
Cl	3425.667	+/-	116.275
K	2079.023	+/-	256.535
Ca	22916.324	+/-	597.104
Ti	1.000	+/-	527.116
V	1.000	+/-	103.289
Cr	78.266	+/-	44.186
Mn	1.000	+/-	200.368
Fe	5603.911	+/-	258.653
Co	1.000	+/-	75.851
Ni	1.000	+/-	47.582
Cu	227.117	+/-	34.467
Zn	3100.535	+/-	109.473
As	6082.043	+/-	230.972
Se	42.587	+/-	30.419
Rb	1.000	+/-	53.361
Sr	363.135	+/-	16.013
Y	1.000	+/-	22.190
Zr	1.000	+/-	88.543
Nb	28.783	+/-	25.823
Ag	22.284	+/-	14.167
Cd	28.639	+/-	20.953
Sn	773.350	+/-	63.854
Sb	1.000	+/-	50.290
Ba	1.000	+/-	151.897
La	1.000	+/-	143.458
Ce	1.000	+/-	176.865
Au	3337.160	+/-	127.300
Hg	1.000	+/-	22.252
Pb	24849.572	+/-	555.823
Bi	1.000	+/-	1200.191
Th	1.000	+/-	1202.608

mRFA -Ergebnisse

XL3t-69288

Reading No 3
Mode Mining
Time 2021-09-30 14:49
Duration 121.55
Units ppm
Sigma Value 2
Sequence Final
Flags
INV NR Gm1244
OBJEKT TAFELGEMAELEN
MATERIAL HOLZ METALL FASSUNG
ANALYSESTELLE P3 HINTERGRUND FLAECHE
MESSAUFBAU STATIV
FILTER m30lo30hi30li30
User Login Raquet



Ele	ppm	+/-	$\pm 2\sigma$
Mg	21532.719	+/-	11413.261
Al	12525.926	+/-	1411.408
Bal	707803.563	+/-	1397.530
Si	24191.213	+/-	789.343
P	29345.414	+/-	368.561
S	8607.954	+/-	116.751
Cl	332.766	+/-	30.972
K	1376.451	+/-	147.812
Ca	185281.891	+/-	1021.899
Ti	699.338	+/-	126.919
V	37.333	+/-	22.300
Cr	100.073	+/-	22.175
Mn	1.000	+/-	56.242
Fe	4462.188	+/-	105.988
Co	1.000	+/-	32.433
Ni	1.000	+/-	23.470
Cu	288.284	+/-	18.723
Zn	151.619	+/-	13.884
As	56.191	+/-	10.855
Se	1.000	+/-	5.196
Rb	13.573	+/-	4.346
Sr	421.235	+/-	6.895
Y	1.000	+/-	1.215
Zr	1.000	+/-	6.536
Nb	1.000	+/-	1.717
Ag	55.302	+/-	5.421
Cd	11.622	+/-	5.814
Sn	1.000	+/-	9.287
Sb	1.000	+/-	20.143
Ba	1.000	+/-	41.104
La	1.000	+/-	38.399
Ce	-339.000	+/-	83.388
Au	2510.299	+/-	44.243
Hg	7.414	+/-	4.529
Pb	187.750	+/-	8.987
Bi	1.000	+/-	74.188
Th	1.000	+/-	106.634

mRFA -Ergebnisse

XL3t-69288

Reading No 4
Mode Mining
Time 2021-09-30 14:54
Duration 120.53
Units ppm
Sigma Value 2
Sequence Final
Flags
INV NR Gm1244
OBJEKT TAFELGEMAELEN
MATERIAL HOLZ METALL FASSUNG
ANALYSESTELLE P4 HINTERGRUND RAND
MESSAUFBAU STATIV
FILTER m30lo30hi30li30
User Login Raquet



Ele	ppm	+/-	$\pm 2\sigma$
Mg	1.000	+/-	7683.321
Al	5055.103	+/-	857.591
Bal	794354.688	+/-	947.754
Si	12891.521	+/-	599.275
P	38741.895	+/-	387.974
S	11596.552	+/-	125.820
Cl	468.819	+/-	27.674
K	1064.590	+/-	130.259
Ca	126457.508	+/-	747.913
Ti	505.831	+/-	108.784
V	1.000	+/-	31.721
Cr	54.101	+/-	19.753
Mn	1.000	+/-	44.743
Fe	3267.929	+/-	85.738
Co	1.000	+/-	26.455
Ni	1.000	+/-	19.768
Cu	335.176	+/-	18.089
Zn	179.295	+/-	15.168
As	144.270	+/-	15.395
Se	1.000	+/-	5.907
Rb	21.373	+/-	5.087
Sr	195.745	+/-	4.485
Y	1.000	+/-	1.460
Zr	1.000	+/-	7.689
Nb	1.000	+/-	3.615
Ag	90.944	+/-	5.194
Cd	15.070	+/-	4.459
Sn	8.759	+/-	6.139
Sb	1.000	+/-	13.740
Ba	1.000	+/-	29.835
La	1.000	+/-	27.706
Ce	-339.000	+/-	60.480
Au	3638.395	+/-	51.840
Hg	444.209	+/-	11.149
Pb	468.180	+/-	13.040
Bi	1.000	+/-	93.398
Th	1.000	+/-	116.098

mRFA -Ergebnisse

XL3t-69288

Reading No 5
Mode Mining
Time 2021-09-30 14:59
Duration 122.72
Units ppm
Sigma Value 2
Sequence Final
Flags
INV NR Gm1244
OBJEKT TAFELGEMAELEN
MATERIAL HOLZ METALL FASSUNG
ANALYSESTELLE P5 HINTERGRUND RAND
MESSAUFBAU STATIV
FILTER m30lo30hi30li30
User Login Raquet



Ele	ppm	+/-	$\pm 2\sigma$
Mg	1.000	+/-	10896.713
Al	4139.557	+/-	742.302
Bal	818968.875	+/-	863.830
Si	13237.036	+/-	497.963
P	11293.256	+/-	201.821
S	8286.993	+/-	98.335
Cl	456.986	+/-	26.437
K	1605.750	+/-	135.936
Ca	133896.875	+/-	798.946
Ti	554.510	+/-	110.878
V	1.000	+/-	31.367
Cr	60.609	+/-	18.496
Mn	1.000	+/-	47.158
Fe	3533.568	+/-	91.361
Co	1.000	+/-	28.184
Ni	1.000	+/-	20.843
Cu	566.549	+/-	22.900
Zn	204.555	+/-	14.640
As	130.137	+/-	17.791
Se	1.000	+/-	4.549
Rb	12.346	+/-	4.525
Sr	182.487	+/-	4.446
Y	1.000	+/-	1.667
Zr	1.000	+/-	8.153
Nb	1.000	+/-	2.096
Ag	34.670	+/-	4.351
Cd	8.152	+/-	4.861
Sn	1.000	+/-	7.020
Sb	1.000	+/-	11.621
Ba	1.000	+/-	33.977
La	1.000	+/-	31.272
Ce	-339.000	+/-	68.424
Au	1594.666	+/-	35.028
Hg	570.430	+/-	12.366
Pb	661.979	+/-	15.762
Bi	1.000	+/-	101.767
Th	1.000	+/-	122.632

mRFA -Ergebnisse

XL3t-69288

Reading No 6
Mode Mining
Time 2021-09-30 15:03
Duration 121.21
Units ppm
Sigma Value 2
Sequence Final
Flags
INV NR Gm1244
OBJEKT TAFELGEMAELEN
MATERIAL HOLZ METALL FASSUNG
ANALYSESTELLE P6 Rotlack
MESSAUFBAU STATIV
FILTER m30lo30hi30li30
User Login Raquet



Ele	ppm	+/-	$\pm 2\sigma$
Mg	1.000	+/-	9043.924
Al	2441.521	+/-	684.970
Bal	861123.875	+/-	713.269
Si	6903.511	+/-	385.019
P	199.359	+/-	115.665
S	17303.328	+/-	179.373
Cl	2770.116	+/-	49.619
K	2638.589	+/-	146.350
Ca	96406.305	+/-	761.320
Ti	211.407	+/-	101.198
V	1.000	+/-	26.988
Cr	25.375	+/-	21.037
Mn	1.000	+/-	54.161
Fe	4468.642	+/-	107.940
Co	1.000	+/-	32.254
Ni	1.000	+/-	22.879
Cu	203.009	+/-	16.511
Zn	169.351	+/-	11.203
As	1137.121	+/-	43.332
Se	1.000	+/-	5.086
Rb	1.000	+/-	9.397
Sr	401.061	+/-	6.839
Y	1.000	+/-	3.540
Zr	1.000	+/-	16.526
Nb	1.000	+/-	5.169
Ag	1.000	+/-	3.079
Cd	12.810	+/-	5.622
Sn	1.000	+/-	10.527
Sb	1.000	+/-	13.508
Ba	1.000	+/-	39.722
La	1.000	+/-	36.974
Ce	-339.000	+/-	80.168
Au	1.000	+/-	7.512
Hg	1.000	+/-	3.700
Pb	3584.689	+/-	45.339
Bi	1.000	+/-	224.988
Th	1.000	+/-	245.335

mRFA -Ergebnisse

XL3t-69288

Reading No 7
Mode Mining
Time 2021-09-30 15:08
Duration 121.48
Units ppm
Sigma Value 2
Sequence Final
Flags
INV NR Gm1244
OBJEKT TAFELGEMAELEN
MATERIAL HOLZ METALL FASSUNG
ANALYSESTELLE P7 GRUENES KLEID
MESSAUFBAU STATIV
FILTER m30lo30hi30li30
User Login Raquet



Ele	ppm	+/-	$\pm 2\sigma$
Mg	1.000	+/-	7935.996
Al	2813.160	+/-	781.351
Bal	842162.188	+/-	1658.797
Si	9827.810	+/-	484.410
P	2375.417	+/-	176.126
S	40150.543	+/-	787.498
Cl	2457.314	+/-	68.108
K	272.811	+/-	166.940
Ca	6935.212	+/-	248.657
Ti	1.000	+/-	101.891
V	1.000	+/-	19.841
Cr	1.000	+/-	28.400
Mn	111.487	+/-	86.738
Fe	1.000	+/-	84.439
Co	101.998	+/-	35.126
Ni	79.100	+/-	44.456
Cu	14260.924	+/-	283.901
Zn	149.865	+/-	23.511
As	12356.506	+/-	337.246
Se	1.000	+/-	24.183
Rb	1.000	+/-	80.845
Sr	232.115	+/-	12.118
Y	1.000	+/-	32.875
Zr	1.000	+/-	126.980
Nb	68.834	+/-	40.351
Ag	1.000	+/-	12.215
Cd	19.442	+/-	12.566
Sn	3951.518	+/-	90.325
Sb	1.000	+/-	29.998
Ba	1.000	+/-	136.232
La	1.000	+/-	138.648
Ce	-339.000	+/-	267.668
Au	1.000	+/-	37.487
Hg	1.000	+/-	21.834
Pb	61673.750	+/-	1126.547
Bi	1.000	+/-	1315.057
Th	1.000	+/-	1878.820

mRFA -Ergebnisse

XL3t-69288

Reading No 8
Mode Mining
Time 2021-09-30 15:13
Duration 120.83
Units ppm
Sigma Value 2
Sequence Final
Flags 3mm
INV NR Gm1244
OBJEKT TAFELGEMAELEN
MATERIAL HOLZ METALL FASSUNG
ANALYSESTELLE P8 GRUEN UNTERLEGUNG
MESSAUFBAU STATIV
FILTER m30lo30hi30li30
User Login Raquet



Ele	ppm	+/-	$\pm 2\sigma$
Mg	1.000	+/-	8467.111
Al	1888.574	+/-	668.509
Bal	882552.438	+/-	1129.746
Si	9600.959	+/-	537.386
P	1007.129	+/-	148.875
S	22264.844	+/-	410.896
Cl	2015.611	+/-	68.962
K	394.067	+/-	141.583
Ca	56755.027	+/-	996.962
Ti	1.000	+/-	131.262
V	1.000	+/-	21.052
Cr	1.000	+/-	30.813
Mn	1.000	+/-	77.551
Fe	1606.429	+/-	121.419
Co	1.000	+/-	42.602
Ni	1.000	+/-	34.719
Cu	3643.282	+/-	115.449
Zn	93.682	+/-	17.827
As	3785.197	+/-	145.044
Se	1.000	+/-	18.430
Rb	1.000	+/-	30.458
Sr	87.533	+/-	6.394
Y	1.000	+/-	13.333
Zr	1.000	+/-	55.398
Nb	22.497	+/-	15.597
Ag	1.000	+/-	11.482
Cd	13.396	+/-	12.338
Sn	34.000	+/-	21.382
Sb	1.000	+/-	37.437
Ba	1.000	+/-	86.436
La	1.000	+/-	80.702
Ce	1.000	+/-	98.821
Au	1.000	+/-	22.207
Hg	1.000	+/-	13.773
Pb	14235.359	+/-	272.383
Bi	1.000	+/-	665.395
Th	1.000	+/-	772.073

mRFA -Ergebnisse

XL3t-69288

Reading No 9
Mode Mining
Time 2021-09-30 15:17
Duration 121.21
Units ppm
Sigma Value 2
Sequence Final
Flags 3mm
INV NR Gm1244
OBJEKT TAFELGEMAELEN
MATERIAL HOLZ METALL FASSUNG
ANALYSESTELLE P9 SCHWARZ AERMEL
MESSAUFBAU STATIV
FILTER m30lo30hi30li30
User Login Raquet



Ele	ppm	+/-	$\pm 2\sigma$
Mg	1.000	+/-	9816.128
Al	1109.048	+/-	1047.486
Bal	722482.313	+/-	2548.019
Si	6726.153	+/-	511.314
P	1.000	+/-	118.867
S	7929.779	+/-	139.828
Cl	3096.362	+/-	82.660
K	3068.921	+/-	252.317
Ca	248590.313	+/-	2624.469
Ti	1.000	+/-	140.421
V	1.000	+/-	30.330
Cr	1.000	+/-	51.439
Mn	1.000	+/-	106.015
Fe	290.242	+/-	83.275
Co	1.000	+/-	36.710
Ni	1.000	+/-	38.490
Cu	3518.663	+/-	120.560
Zn	32.733	+/-	18.075
As	662.943	+/-	59.586
Se	1.000	+/-	8.145
Rb	1.000	+/-	11.221
Sr	526.677	+/-	16.389
Y	1.000	+/-	5.739
Zr	1.000	+/-	25.279
Nb	1.000	+/-	7.159
Ag	1.000	+/-	10.893
Cd	20.385	+/-	14.429
Sn	1.000	+/-	29.619
Sb	1.000	+/-	59.393
Ba	1.000	+/-	103.954
La	1.000	+/-	92.109
Ce	1.000	+/-	112.297
Au	1.000	+/-	13.447
Hg	1.000	+/-	6.843
Pb	1945.409	+/-	61.373
Bi	1.000	+/-	317.477
Th	1.000	+/-	351.798