

mRFA -Ergebnisse

XL3t-69288

Reading No 1
Mode Mining
Time 2021-07-08 10:50
Duration 120.02
Units ppm
Sigma Value 2
Sequence Final
Flags 3mm
INV NR Gm1180
OBJEKT TAFELGEMAELENDE
MATERIAL HOLZ METALL FASSUNG
ANALYSESTELLE P1 HINTERGRUND ORIGINAL
MESSAUFBAU STATIV
FILTER m30lo30hi30li30
User Login Raquet



Ele	ppm	+/-	$\pm 2\sigma$
Mg	14211.090	+/-	9287.675
Al	2007.434	+/-	795.758
Bal	858541.125	+/-	1398.325
Si	11073.204	+/-	638.961
P	7676.034	+/-	269.887
S	25878.799	+/-	472.310
Cl	2694.688	+/-	85.900
K	1070.038	+/-	180.863
Ca	55551.332	+/-	988.665
Ti	263.625	+/-	149.196
V	1.000	+/-	32.355
Cr	52.382	+/-	30.178
Mn	1.000	+/-	98.167
Fe	2824.137	+/-	163.031
Co	1.000	+/-	56.845
Ni	1.000	+/-	37.343
Cu	1873.598	+/-	79.248
Zn	67.038	+/-	20.147
As	2880.341	+/-	127.762
Se	1.000	+/-	14.502
Rb	1.000	+/-	29.862
Sr	153.362	+/-	8.238
Y	1.000	+/-	11.813
Zr	1.000	+/-	49.870
Nb	1.000	+/-	20.748
Ag	1.000	+/-	7.891
Cd	1.000	+/-	17.397
Sn	219.147	+/-	32.567
Sb	1.000	+/-	35.750
Ba	1.000	+/-	101.136
La	1.000	+/-	98.490
Ce	1.000	+/-	118.317
Au	1838.762	+/-	77.228
Hg	1.000	+/-	13.130
Pb	11123.895	+/-	220.656
Bi	1.000	+/-	668.481
Th	1.000	+/-	696.375

mRFA -Ergebnisse

XL3t-69288

Reading No 2
Mode Mining
Time 2021-07-08 10:55
Duration 121.96
Units ppm
Sigma Value 2
Sequence Final
Flags 3mm
INV NR Gm1180
OBJEKT TAFELGEMAEDELDE
MATERIAL HOLZ METALL FASSUNG
ANALYSESTELLE P2 HINTERGRUND
MESSAUFBAU STATIV
FILTER m30lo30hi30li30
User Login Raquet



Ele	ppm	+/-	$\pm 2\sigma$
Mg	1.000	+/-	7681.962
Al	9460.795	+/-	1082.787
Bal	797931.313	+/-	1705.766
Si	23254.063	+/-	831.132
P	29546.678	+/-	431.807
S	10235.927	+/-	152.216
Cl	740.269	+/-	46.774
K	1655.923	+/-	175.230
Ca	116597.641	+/-	1196.849
Ti	717.096	+/-	164.594
V	37.210	+/-	32.697
Cr	79.300	+/-	28.019
Mn	1.000	+/-	92.030
Fe	4675.185	+/-	188.354
Co	1.000	+/-	56.251
Ni	1.000	+/-	31.700
Cu	229.223	+/-	28.600
Zn	70.014	+/-	22.922
As	100.968	+/-	22.822
Se	1.000	+/-	10.658
Rb	17.742	+/-	8.945
Sr	141.898	+/-	6.753
Y	1.000	+/-	2.765
Zr	1.000	+/-	12.969
Nb	1.000	+/-	3.779
Ag	16.189	+/-	8.364
Cd	14.108	+/-	11.795
Sn	1.000	+/-	30.700
Sb	1.000	+/-	28.941
Ba	1.000	+/-	80.867
La	1.000	+/-	77.313
Ce	1.000	+/-	92.987
Au	4061.840	+/-	99.609
Hg	1.000	+/-	8.730
Pb	416.707	+/-	22.352
Bi	1.000	+/-	153.278
Th	1.000	+/-	204.185

mRFA -Ergebnisse

XL3t-69288

Reading No 3
Mode Mining
Time 2021-07-08 10:58
Duration 120.67
Units ppm
Sigma Value 2
Sequence Final
Flags
INV NR Gm1180
OBJEKT TAFELGEMAELEN
MATERIAL HOLZ METALL FASSUNG
ANALYSESTELLE P3 NIMBUS ANNA
MESSAUFBAU STATIV
FILTER m30lo30hi30li30
User Login Raquet



Ele	ppm	+/-	$\pm 2\sigma$
Mg	1.000	+/-	8225.270
Al	17312.867	+/-	1331.199
Bal	749328.063	+/-	1113.454
Si	29135.096	+/-	790.416
P	32438.922	+/-	364.994
S	9291.896	+/-	114.478
Cl	349.088	+/-	27.381
K	1574.403	+/-	136.446
Ca	152299.000	+/-	838.123
Ti	778.425	+/-	149.617
V	1.000	+/-	42.795
Cr	67.962	+/-	19.676
Mn	1.000	+/-	49.857
Fe	4401.389	+/-	97.151
Co	1.000	+/-	29.362
Ni	1.000	+/-	19.722
Cu	211.040	+/-	15.335
Zn	46.208	+/-	10.046
As	100.435	+/-	12.617
Se	1.000	+/-	4.448
Rb	14.332	+/-	3.974
Sr	143.849	+/-	3.590
Y	1.000	+/-	1.160
Zr	1.000	+/-	6.209
Nb	1.000	+/-	1.643
Ag	26.026	+/-	3.878
Cd	16.710	+/-	4.981
Sn	6.610	+/-	6.498
Sb	1.000	+/-	19.910
Ba	1.000	+/-	33.684
La	1.000	+/-	31.414
Ce	-339.000	+/-	68.343
Au	2131.094	+/-	37.263
Hg	1.000	+/-	3.220
Pb	326.600	+/-	10.579
Bi	1.000	+/-	73.266
Th	1.000	+/-	111.318

mRFA -Ergebnisse

XL3t-69288

Reading No 4
Mode Mining
Time 2021-07-08 11:03
Duration 120.00
Units ppm
Sigma Value 2
Sequence Final
Flags 3mm
INV NR Gm1180
OBJEKT TAFELGEMAELENDE
MATERIAL HOLZ METALL FASSUNG
ANALYSESTELLE P4 NIMBUS MARIA ORIGINAL
MESSAUFBAU STATIV
FILTER m30lo30hi30li30
User Login Raquet



Ele	ppm	+/-	$\pm 2\sigma$
Mg	1.000	+/-	7937.049
Al	4445.463	+/-	968.353
Bal	832760.750	+/-	1763.543
Si	12667.637	+/-	706.877
P	10041.435	+/-	302.497
S	13294.812	+/-	265.001
Cl	2359.052	+/-	81.499
K	2403.615	+/-	232.719
Ca	87234.547	+/-	1460.312
Ti	366.825	+/-	274.610
V	1.000	+/-	74.955
Cr	99.176	+/-	39.206
Mn	1.000	+/-	184.484
Fe	10230.358	+/-	352.896
Co	1.000	+/-	96.042
Ni	1.000	+/-	43.028
Cu	4974.512	+/-	158.262
Zn	104.867	+/-	29.385
As	2886.333	+/-	148.398
Se	1.000	+/-	18.566
Rb	1.000	+/-	42.612
Sr	130.140	+/-	8.775
Y	1.000	+/-	14.649
Zr	1.000	+/-	60.536
Nb	1.000	+/-	22.169
Ag	22.397	+/-	11.913
Cd	1.000	+/-	25.585
Sn	31.875	+/-	28.056
Sb	1.000	+/-	40.997
Ba	1.000	+/-	117.552
La	1.000	+/-	112.546
Ce	1.000	+/-	137.976
Au	3243.413	+/-	117.240
Hg	1.000	+/-	17.404
Pb	12702.735	+/-	271.533
Bi	1.000	+/-	705.429
Th	1.000	+/-	859.810

mRFA -Ergebnisse

XL3t-69288

Reading No 5
Mode Mining
Time 2021-07-08 11:06
Duration 121.91
Units ppm
Sigma Value 2
Sequence Final
Flags 3mm
INV NR Gm1180
OBJEKT TAFELGEMAELENDE
MATERIAL HOLZ METALL FASSUNG
ANALYSESTELLE P5 NIMBUS MARIA
MESSAUFBAU STATIV
FILTER m30lo30hi30li30
User Login Raquet



Ele	ppm	+/-	$\pm 2\sigma$
Mg	1.000	+/-	10709.543
Al	13055.749	+/-	1393.733
Bal	771769.563	+/-	2060.016
Si	26732.559	+/-	963.109
P	35466.418	+/-	520.559
S	11212.525	+/-	174.397
Cl	398.681	+/-	48.989
K	1433.891	+/-	189.094
Ca	129066.617	+/-	1402.052
Ti	828.050	+/-	183.847
V	45.237	+/-	35.853
Cr	133.030	+/-	31.688
Mn	1.000	+/-	100.415
Fe	4512.569	+/-	201.135
Co	1.000	+/-	63.214
Ni	1.000	+/-	34.357
Cu	234.546	+/-	31.376
Zn	98.668	+/-	26.445
As	137.934	+/-	24.941
Se	1.000	+/-	12.144
Rb	13.441	+/-	9.965
Sr	173.431	+/-	8.115
Y	1.000	+/-	3.125
Zr	1.000	+/-	14.781
Nb	1.000	+/-	4.258
Ag	21.718	+/-	9.606
Cd	15.739	+/-	12.984
Sn	1.000	+/-	24.625
Sb	1.000	+/-	31.354
Ba	1.000	+/-	90.163
La	1.000	+/-	85.223
Ce	1.000	+/-	103.141
Au	4268.281	+/-	111.629
Hg	1.000	+/-	10.149
Pb	381.304	+/-	23.457
Bi	1.000	+/-	173.982
Th	1.000	+/-	217.632

mRFA -Ergebnisse

XL3t-69288

Reading No 6
Mode Mining
Time 2021-07-08 11:10
Duration 120.89
Units ppm
Sigma Value 2
Sequence Final
Flags
INV NR Gm1180
OBJEKT TAFELGEMAELEN
MATERIAL HOLZ METALL FASSUNG
ANALYSESTELLE P6 ROTLACK
MESSAUFBAU STATIV
FILTER m30lo30hi30li30
User Login Raquet



Ele	ppm	+/-	$\pm 2\sigma$
Mg	1.000	+/-	4894.923
Al	7113.724	+/-	682.244
Bal	889509.750	+/-	627.279
Si	13253.942	+/-	449.187
P	1436.241	+/-	106.180
S	12391.692	+/-	161.814
Cl	1726.144	+/-	38.162
K	4399.154	+/-	152.541
Ca	56578.797	+/-	613.601
Ti	1.000	+/-	125.358
V	1.000	+/-	19.640
Cr	17.724	+/-	16.059
Mn	1.000	+/-	54.147
Fe	1175.856	+/-	63.253
Co	1.000	+/-	22.010
Ni	1.000	+/-	23.062
Cu	663.899	+/-	26.642
Zn	44.291	+/-	7.684
As	2675.676	+/-	73.822
Se	1.000	+/-	9.315
Rb	1.000	+/-	14.303
Sr	142.790	+/-	4.369
Y	1.000	+/-	6.057
Zr	1.000	+/-	26.814
Nb	9.770	+/-	7.443
Ag	1.000	+/-	3.678
Cd	12.401	+/-	5.429
Sn	1.000	+/-	9.466
Sb	1.000	+/-	18.880
Ba	1.000	+/-	38.336
La	1.000	+/-	35.741
Ce	-339.000	+/-	77.892
Au	1.000	+/-	11.671
Hg	1.000	+/-	5.748
Pb	8848.184	+/-	107.066
Bi	1.000	+/-	382.681
Th	1.000	+/-	393.792

mRFA -Ergebnisse

XL3t-69288

Reading No 7
Mode Mining
Time 2021-07-08 11:17
Duration 120.64
Units ppm
Sigma Value 2
Sequence Final
Flags
INV NR Gm1180
OBJEKT TAFELGEMAELEN
MATERIAL HOLZ METALL FASSUNG
ANALYSESTELLE P7 VORHANG METALL
MESSAUFBAU STATIV
FILTER m30lo30hi30li30
User Login Raquet



Ele	ppm	+/-	$\pm 2\sigma$
Mg	8834.534	+/-	5558.213
Al	4383.194	+/-	582.325
Bal	868035.000	+/-	824.253
Si	17894.754	+/-	513.390
P	14292.634	+/-	243.038
S	15019.935	+/-	195.593
Cl	1766.249	+/-	37.181
K	4175.956	+/-	168.655
Ca	37863.105	+/-	471.994
Ti	281.069	+/-	98.494
V	1.000	+/-	21.129
Cr	37.111	+/-	20.153
Mn	1.000	+/-	87.606
Fe	5238.458	+/-	135.474
Co	1.000	+/-	38.436
Ni	1.000	+/-	26.608
Cu	4151.208	+/-	80.186
Zn	88.494	+/-	16.160
As	3150.100	+/-	89.654
Se	1.000	+/-	10.718
Rb	28.929	+/-	16.465
Sr	135.079	+/-	4.948
Y	1.000	+/-	7.931
Zr	1.000	+/-	34.150
Nb	1.000	+/-	13.839
Ag	18.948	+/-	4.153
Cd	11.013	+/-	5.597
Sn	24.472	+/-	7.931
Sb	1.000	+/-	17.430
Ba	1.000	+/-	40.559
La	1.000	+/-	38.059
Ce	-339.000	+/-	82.741
Au	3567.130	+/-	69.495
Hg	1.000	+/-	9.281
Pb	11002.667	+/-	141.929
Bi	1.000	+/-	430.734
Th	1.000	+/-	494.963

mRFA -Ergebnisse

XL3t-69288

Reading No 8
Mode Mining
Time 2021-07-08 11:21
Duration 121.73
Units ppm
Sigma Value 2
Sequence Final
Flags
INV NR Gm1180
OBJEKT TAFELGEMAELEN
MATERIAL HOLZ METALL FASSUNG
ANALYSESTELLE P8 VORHANG FARBE
MESSAUFBAU STATIV
FILTER m30lo30hi30li30
User Login Raquet



Ele	ppm	+/-	$\pm 2\sigma$
Mg	10248.019	+/-	5721.014
Al	11407.699	+/-	777.570
Bal	880166.000	+/-	780.026
Si	11594.442	+/-	405.452
P	2166.658	+/-	117.014
S	20634.418	+/-	283.015
Cl	2010.232	+/-	41.864
K	3857.919	+/-	157.350
Ca	27975.566	+/-	391.945
Ti	1.000	+/-	128.006
V	1.000	+/-	16.142
Cr	1.000	+/-	17.246
Mn	61.035	+/-	59.254
Fe	788.434	+/-	58.711
Co	1.000	+/-	23.250
Ni	1.000	+/-	26.106
Cu	11757.976	+/-	184.817
Zn	1.000	+/-	12.889
As	3833.908	+/-	104.117
Se	1.000	+/-	13.491
Rb	1.000	+/-	19.892
Sr	179.589	+/-	5.714
Y	1.000	+/-	8.740
Zr	1.000	+/-	37.245
Nb	15.677	+/-	10.424
Ag	1.000	+/-	4.474
Cd	11.911	+/-	6.009
Sn	11.263	+/-	8.123
Sb	16.896	+/-	15.680
Ba	1.000	+/-	43.711
La	1.000	+/-	40.805
Ce	-339.000	+/-	88.937
Au	1.000	+/-	16.499
Hg	1.000	+/-	7.911
Pb	13262.278	+/-	179.618
Bi	1.000	+/-	558.196
Th	1.000	+/-	538.978

mRFA -Ergebnisse

XL3t-69288

Reading No 9
Mode Mining
Time 2021-07-08 11:25
Duration 120.45
Units ppm
Sigma Value 2
Sequence Final
Flags 3mm
INV NR Gm1180
OBJEKT TAFELGEMAELENDE
MATERIAL HOLZ METALL FASSUNG
ANALYSESTELLE P9 DECKE
MESSAUFBAU STATIV
FILTER m30lo30hi30li30
User Login Raquet



Ele	ppm	+/-	$\pm 2\sigma$
Mg	1.000	+/-	7162.206
Al	3564.404	+/-	796.076
Bal	871688.250	+/-	1263.380
Si	14774.934	+/-	729.713
P	14027.688	+/-	346.214
S	15603.242	+/-	281.033
Cl	2174.638	+/-	73.581
K	2878.146	+/-	215.395
Ca	56627.227	+/-	927.215
Ti	258.964	+/-	122.425
V	1.000	+/-	24.608
Cr	84.651	+/-	31.977
Mn	1.000	+/-	95.383
Fe	3713.409	+/-	185.809
Co	1.000	+/-	60.655
Ni	1.000	+/-	37.262
Cu	2332.792	+/-	89.004
Zn	113.739	+/-	25.926
As	1923.491	+/-	98.297
Se	1.000	+/-	14.920
Rb	20.660	+/-	19.718
Sr	216.333	+/-	9.622
Y	1.000	+/-	9.430
Zr	1.000	+/-	40.331
Nb	1.000	+/-	10.504
Ag	10.344	+/-	9.544
Cd	15.089	+/-	14.290
Sn	24.970	+/-	24.040
Sb	1.000	+/-	46.227
Ba	1.000	+/-	101.630
La	1.000	+/-	97.005
Ce	1.000	+/-	117.751
Au	3334.375	+/-	104.242
Hg	1.000	+/-	13.591
Pb	6612.618	+/-	137.464
Bi	1.000	+/-	471.384
Th	1.000	+/-	574.603

mRFA -Ergebnisse

XL3t-69288

Reading No 10
Mode Mining
Time 2021-07-08 11:29
Duration 120.01
Units ppm
Sigma Value 2
Sequence Final
Flags
INV NR Gm1180
OBJEKT TAFELGEMAELEN
MATERIAL HOLZ METALL FASSUNG
ANALYSESTELLE P10 RAHMENFASSUNG
MESSAUFBAU STATIV
FILTER m30lo30hi30li30
User Login Raquet

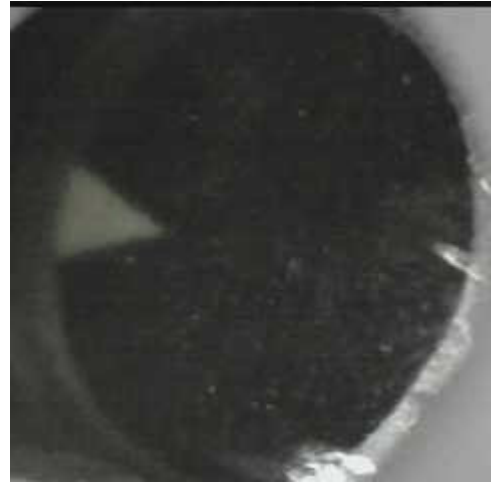


Ele	ppm	+/-	$\pm 2\sigma$
Mg	16466.818	+/-	8169.540
Al	5234.242	+/-	820.231
Bal	842167.500	+/-	1290.202
Si	15525.165	+/-	594.180
P	7021.927	+/-	234.970
S	38930.789	+/-	716.030
Cl	2361.796	+/-	61.875
K	943.490	+/-	120.350
Ca	22500.850	+/-	432.756
Ti	1.000	+/-	82.690
V	1.000	+/-	15.617
Cr	1.000	+/-	21.106
Mn	74.803	+/-	74.038
Fe	454.928	+/-	64.065
Co	1.000	+/-	27.481
Ni	1.000	+/-	33.851
Cu	270.283	+/-	24.952
Zn	85.843	+/-	11.470
As	8507.476	+/-	227.765
Se	1.000	+/-	16.666
Rb	1.000	+/-	46.681
Sr	112.442	+/-	7.015
Y	1.000	+/-	20.548
Zr	1.000	+/-	83.322
Nb	47.535	+/-	25.459
Ag	1.000	+/-	6.828
Cd	1.000	+/-	6.946
Sn	1.000	+/-	11.370
Sb	1.000	+/-	25.168
Ba	1.000	+/-	58.756
La	1.000	+/-	55.151
Ce	-339.000	+/-	120.208
Au	89.149	+/-	36.969
Hg	1.000	+/-	15.087
Pb	39205.039	+/-	650.455
Bi	1.000	+/-	894.463
Th	1.000	+/-	1317.496

mRFA -Ergebnisse

XL3t-69288

Reading No 11
Mode Mining
Time 2021-07-08 11:35
Duration 121.93
Units ppm
Sigma Value 2
Sequence Final
Flags
INV NR Gm1180
OBJEKT TAFELGEMAELEN
MATERIAL HOLZ METALL FASSUNG
ANALYSESTELLE P11 SCHATTEN
MESSAUFBAU STATIV
FILTER m30lo30hi30li30
User Login Raquet



Ele	ppm	+/-	$\pm 2\sigma$
Mg	1.000	+/-	8517.540
Al	2667.256	+/-	611.240
Bal	885661.563	+/-	691.175
Si	10606.574	+/-	438.694
P	3792.097	+/-	160.160
S	29012.418	+/-	367.245
Cl	2512.981	+/-	50.564
K	1732.004	+/-	114.085
Ca	43756.668	+/-	537.777
Ti	1.000	+/-	65.756
V	1.000	+/-	13.027
Cr	1.000	+/-	20.858
Mn	1.000	+/-	56.187
Fe	305.553	+/-	45.382
Co	1.000	+/-	20.058
Ni	1.000	+/-	24.779
Cu	2482.899	+/-	57.057
Zn	33.391	+/-	8.601
As	4045.322	+/-	99.622
Se	1.000	+/-	8.998
Rb	1.000	+/-	21.305
Sr	146.647	+/-	4.898
Y	1.000	+/-	8.243
Zr	1.000	+/-	35.461
Nb	11.438	+/-	9.946
Ag	5.309	+/-	3.674
Cd	8.924	+/-	5.542
Sn	9.744	+/-	7.566
Sb	1.000	+/-	23.120
Ba	1.000	+/-	40.714
La	1.000	+/-	37.937
Ce	-339.000	+/-	82.643
Au	1.000	+/-	13.416
Hg	1.000	+/-	6.989
Pb	13209.277	+/-	166.776
Bi	1.000	+/-	434.979
Th	1.000	+/-	515.490