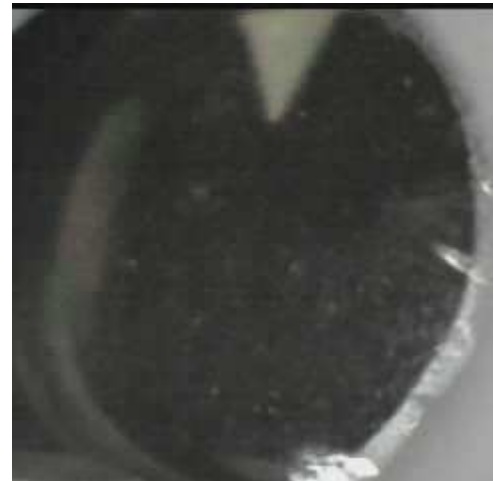


mRFA -Ergebnisse

XL3t-69288

Reading No 19
Mode Mining
Time 2021-03-08 13:07
Duration 120.67
Units ppm
Sigma Value 2
Sequence Final
Flags
INV NR Gm1126
OBJEKT TAFELGEMAELEN
MATERIAL HOLZ METALL FASSUNG
ANALYSESTELLE P1 ROTLACK
MESSAUFBAU STATIV
FILTER m30lo30hi30li30
User Login Raquet



Ele	ppm	+/-	$\pm 2\sigma$
Mg	1.000	+/-	4412.354
Al	4468.187	+/-	574.411
Bal	913356.625	+/-	444.253
Si	5558.377	+/-	305.843
P	712.855	+/-	88.623
S	9108.002	+/-	107.515
Cl	1664.972	+/-	35.274
K	6188.644	+/-	164.186
Ca	53827.180	+/-	455.984
Ti	1.000	+/-	115.550
V	1.000	+/-	15.821
Cr	1.000	+/-	18.641
Mn	1.000	+/-	42.623
Fe	593.297	+/-	44.379
Co	1.000	+/-	16.866
Ni	1.000	+/-	19.101
Cu	611.628	+/-	22.660
Zn	9.668	+/-	5.919
As	871.010	+/-	35.964
Se	1.000	+/-	4.145
Rb	1.000	+/-	8.977
Sr	56.272	+/-	2.403
Y	1.000	+/-	2.916
Zr	1.000	+/-	14.681
Nb	8.845	+/-	3.990
Ag	4.539	+/-	3.013
Cd	12.666	+/-	4.671
Sn	28.782	+/-	6.570
Sb	1.000	+/-	13.020
Ba	1.000	+/-	31.472
La	1.000	+/-	29.202
Ce	-339.000	+/-	63.576
Au	1.000	+/-	5.906
Hg	1.000	+/-	3.606
Pb	2918.400	+/-	36.349
Bi	1.000	+/-	183.055
Th	1.000	+/-	206.754

mRFA -Ergebnisse

XL3t-69288

Reading No 20
Mode Mining
Time 2021-03-08 13:11
Duration 121.73
Units ppm
Sigma Value 2
Sequence Final
Flags
INV NR Gm1126
OBJEKT TAFELGEMAELEN
MATERIAL HOLZ METALL FASSUNG
ANALYSESTELLE P2 ROTLACK
MESSAUFBAU STATIV
FILTER m30lo30hi30li30
User Login Raquet



Ele	ppm	+/-	$\pm 2\sigma$
Mg	1.000	+/-	5961.536
Al	2090.392	+/-	578.562
Bal	883193.563	+/-	675.162
Si	7118.236	+/-	366.735
P	4256.364	+/-	154.390
S	25715.760	+/-	255.240
Cl	1843.242	+/-	39.225
K	5076.351	+/-	183.397
Ca	59711.953	+/-	576.826
Ti	1.000	+/-	123.621
V	1.000	+/-	22.662
Cr	20.786	+/-	19.490
Mn	1.000	+/-	54.673
Fe	562.122	+/-	52.356
Co	1.000	+/-	20.548
Ni	1.000	+/-	24.803
Cu	171.633	+/-	17.269
Zn	295.925	+/-	22.349
As	1451.901	+/-	50.919
Se	1.000	+/-	9.381
Rb	1.000	+/-	9.921
Sr	6.225	+/-	4.869
Y	1.000	+/-	4.428
Zr	1.000	+/-	19.489
Nb	1.000	+/-	7.625
Ag	6.055	+/-	3.430
Cd	17.360	+/-	5.358
Sn	33.102	+/-	7.464
Sb	1.000	+/-	13.437
Ba	1.000	+/-	36.099
La	1.000	+/-	33.450
Ce	-339.000	+/-	72.746
Au	1.000	+/-	33.040
Hg	4361.728	+/-	51.814
Pb	4067.243	+/-	54.627
Bi	1.000	+/-	242.428
Th	1.000	+/-	287.355

mRFA -Ergebnisse

XL3t-69288

Reading No 21
Mode Mining
Time 2021-03-08 13:15
Duration 121.45
Units ppm
Sigma Value 2
Sequence Final
Flags
INV NR Gm1126
OBJEKT TAFELGEMAELEN
MATERIAL HOLZ METALL FASSUNG
ANALYSESTELLE P3 ROTLACK
MESSAUFBAU STATIV
FILTER m30lo30hi30li30
User Login Raquet



Ele	ppm	+/-	$\pm 2\sigma$
Mg	1.000	+/-	5839.792
Al	5234.776	+/-	684.885
Bal	901735.063	+/-	542.561
Si	7579.141	+/-	384.235
P	644.466	+/-	110.454
S	15741.255	+/-	202.838
Cl	1554.730	+/-	39.555
K	7755.040	+/-	197.401
Ca	46126.102	+/-	519.292
Ti	1.000	+/-	94.720
V	1.000	+/-	16.187
Cr	1.000	+/-	24.029
Mn	1.000	+/-	46.564
Fe	641.821	+/-	49.090
Co	1.000	+/-	18.122
Ni	1.000	+/-	21.514
Cu	557.008	+/-	23.658
Zn	41.713	+/-	7.069
As	2845.530	+/-	73.544
Se	1.000	+/-	9.462
Rb	1.000	+/-	16.674
Sr	49.311	+/-	2.737
Y	1.000	+/-	6.016
Zr	1.000	+/-	26.706
Nb	16.927	+/-	7.452
Ag	5.469	+/-	3.356
Cd	16.310	+/-	5.255
Sn	48.774	+/-	7.704
Sb	1.000	+/-	13.278
Ba	1.000	+/-	35.821
La	1.000	+/-	33.299
Ce	-339.000	+/-	72.113
Au	1.000	+/-	9.964
Hg	1.000	+/-	5.711
Pb	9406.497	+/-	110.326
Bi	1.000	+/-	389.270
Th	1.000	+/-	391.728

mRFA -Ergebnisse

XL3t-69288

Reading No 22
Mode Mining
Time 2021-03-08 13:20
Duration 120.53
Units ppm
Sigma Value 2
Sequence Final
Flags
INV NR Gm1126
OBJEKT TAFELGEMAELEN
MATERIAL HOLZ METALL FASSUNG
ANALYSESTELLE P4 ROTLACK
MESSAUFBAU STATIV
FILTER m30lo30hi30li30
User Login Raquet



Ele	ppm	+/-	$\pm 2\sigma$
Mg	1.000	+/-	4164.630
Al	2945.733	+/-	530.852
Bal	921015.750	+/-	473.181
Si	5225.851	+/-	308.392
P	766.735	+/-	95.210
S	11219.877	+/-	131.375
Cl	1242.130	+/-	32.288
K	5008.450	+/-	164.112
Ca	43026.516	+/-	418.019
Ti	84.357	+/-	74.523
V	1.000	+/-	17.498
Cr	1.000	+/-	16.857
Mn	1.000	+/-	54.697
Fe	709.389	+/-	55.454
Co	1.000	+/-	20.869
Ni	1.000	+/-	23.735
Cu	235.801	+/-	18.491
Zn	277.946	+/-	22.735
As	879.421	+/-	38.983
Se	1.000	+/-	7.660
Rb	1.000	+/-	6.570
Sr	1.000	+/-	4.295
Y	1.000	+/-	3.438
Zr	1.000	+/-	15.292
Nb	1.000	+/-	3.828
Ag	3.747	+/-	3.044
Cd	17.588	+/-	4.893
Sn	35.593	+/-	6.845
Sb	1.000	+/-	15.213
Ba	1.000	+/-	32.972
La	1.000	+/-	30.599
Ce	-339.000	+/-	66.680
Au	1.000	+/-	34.634
Hg	4896.144	+/-	53.869
Pb	2408.986	+/-	37.432
Bi	1.000	+/-	189.344
Th	1.000	+/-	226.709