

mRFA -Ergebnisse

XL3t-69288

Reading No 1
Mode Mining
Time 2021-05-12 10:52
Duration 121.54
Units ppm
Sigma Value 2
Sequence Final
Flags
INV NR Gm1067
OBJEKT TAFELGEMAELEN
MATERIAL HOLZ METALL FASSUNG
ANALYSESTELLE P31 WAPPEN links
MESSAUFBAU STATIV
FILTER m30lo30hi30li30
User Login Raquet



Ele	ppm	+/-	$\pm 2\sigma$
Mg	<LOD	:	5859.505
Al	2356.568	+/-	477.534
Bal	898829.875	+/-	734.568
Si	10886.132	+/-	380.633
P	1910.009	+/-	89.471
S	5531.738	+/-	96.242
Cl	1905.249	+/-	40.673
K	3485.834	+/-	179.369
Ca	24850.049	+/-	378.807
Ti	<LOD	:	133.344
V	<LOD	:	24.584
Cr	<LOD	:	28.015
Mn	<LOD	:	83.964
Fe	1958.008	+/-	86.551
Co	<LOD	:	46.758
Ni	<LOD	:	42.110
Cu	23596.580	+/-	355.079
Zn	<LOD	:	29.218
As	3537.611	+/-	123.927
Se	<LOD	:	19.276
Rb	<LOD	:	39.112
Sr	86.658	+/-	4.882
Y	<LOD	:	17.446
Zr	<LOD	:	73.620
Nb	28.364	+/-	13.596
Ag	761.024	+/-	19.467
Cd	28.859	+/-	7.403
Sn	1175.077	+/-	29.002
Sb	<LOD	:	27.165
Ba	<LOD	:	72.917
La	<LOD	:	67.908
Ce	<LOD	:	147.834
Au	626.055	+/-	35.339
Hg	<LOD	:	15.627
Pb	18340.764	+/-	266.187
Bi	<LOD	:	1048.605
Th	<LOD	:	1027.491

mRFA -Ergebnisse

XL3t-69288

Reading No 2
Mode Mining
Time 2021-05-12 10:56
Duration 121.25
Units ppm
Sigma Value 2
Sequence Final
Flags
INV NR Gm1067
OBJEKT TAFELGEMAELEN
MATERIAL HOLZ METALL FASSUNG
ANALYSESTELLE P32 HELM
MESSAUFBAU STATIV
FILTER m30lo30hi30li30
User Login Raquet



Ele	ppm	+/-	$\pm 2\sigma$
Mg	<LOD	:	6992.466
Al	2231.738	+/-	547.627
Bal	904984.375	+/-	620.445
Si	12728.046	+/-	462.249
P	2095.629	+/-	108.418
S	6918.780	+/-	116.079
Cl	1943.959	+/-	44.253
K	2703.060	+/-	160.199
Ca	34646.266	+/-	462.956
Ti	<LOD	:	116.833
V	<LOD	:	22.968
Cr	<LOD	:	25.339
Mn	<LOD	:	79.445
Fe	1755.312	+/-	79.561
Co	<LOD	:	41.927
Ni	<LOD	:	38.533
Cu	10742.146	+/-	171.492
Zn	39.406	+/-	15.045
As	3294.608	+/-	100.537
Se	<LOD	:	21.734
Rb	<LOD	:	34.366
Sr	97.321	+/-	4.401
Y	<LOD	:	13.259
Zr	<LOD	:	61.476
Nb	23.404	+/-	10.441
Ag	612.369	+/-	15.231
Cd	18.704	+/-	5.948
Sn	729.954	+/-	20.098
Sb	<LOD	:	34.086
Ba	<LOD	:	60.266
La	<LOD	:	56.187
Ce	<LOD	:	122.519
Au	724.275	+/-	32.785
Hg	<LOD	:	12.602
Pb	13589.768	+/-	182.581
Bi	<LOD	:	848.184
Th	<LOD	:	804.797

mRFA -Ergebnisse

XL3t-69288

Reading No 3
Mode Mining
Time 2021-05-12 11:00
Duration 121.26
Units ppm
Sigma Value 2
Sequence Final
Flags
INV NR Gm1067
OBJEKT TAFELGEMAELEN
MATERIAL HOLZ METALL FASSUNG
ANALYSESTELLE P33 WAPPEN links
MESSAUFBAU STATIV
FILTER m30lo30hi30li30
User Login Raquet



Ele	ppm	+/-	$\pm 2\sigma$
Mg	<LOD	:	9913.500
Al	2407.763	+/-	616.410
Bal	897343.688	+/-	693.917
Si	11831.708	+/-	478.200
P	1775.861	+/-	120.641
S	11556.854	+/-	184.643
Cl	1671.766	+/-	44.183
K	1947.590	+/-	175.498
Ca	43790.352	+/-	605.603
Ti	<LOD	:	138.194
V	<LOD	:	38.702
Cr	<LOD	:	29.777
Mn	<LOD	:	93.353
Fe	2101.557	+/-	91.793
Co	<LOD	:	46.106
Ni	<LOD	:	40.706
Cu	497.154	+/-	26.823
Zn	213.840	+/-	15.287
As	4538.084	+/-	120.908
Se	<LOD	:	18.214
Rb	<LOD	:	42.798
Sr	111.954	+/-	4.935
Y	<LOD	:	15.791
Zr	<LOD	:	65.214
Nb	24.741	+/-	12.416
Ag	748.778	+/-	17.815
Cd	25.372	+/-	6.538
Sn	914.547	+/-	23.618
Sb	<LOD	:	21.792
Ba	<LOD	:	64.664
La	<LOD	:	60.347
Ce	<LOD	:	131.805
Au	705.266	+/-	34.649
Hg	<LOD	:	14.322
Pb	17554.152	+/-	237.634
Bi	<LOD	:	853.596
Th	<LOD	:	937.891

mRFA -Ergebnisse

XL3t-69288

Reading No 4
Mode Mining
Time 2021-05-12 11:04
Duration 120.74
Units ppm
Sigma Value 2
Sequence Final
Flags
INV NR Gm1067
OBJEKT TAFELGEMAELEN
MATERIAL HOLZ METALL FASSUNG
ANALYSESTELLE P34 HELM
MESSAUFBAU STATIV
FILTER m30lo30hi30li30
User Login Raquet



Ele	ppm	+/-	$\pm 2\sigma$
Mg	<LOD	:	9407.697
Al	3282.784	+/-	520.938
Bal	898843.000	+/-	755.429
Si	13666.271	+/-	435.759
P	2172.300	+/-	96.194
S	5832.320	+/-	102.963
Cl	1925.915	+/-	42.282
K	3124.666	+/-	175.971
Ca	25970.111	+/-	402.090
Ti	<LOD	:	213.877
V	<LOD	:	30.311
Cr	<LOD	:	27.379
Mn	<LOD	:	88.699
Fe	2120.059	+/-	93.745
Co	<LOD	:	49.673
Ni	<LOD	:	43.740
Cu	15524.058	+/-	252.508
Zn	41.914	+/-	18.537
As	4264.921	+/-	136.608
Se	<LOD	:	18.156
Rb	<LOD	:	57.457
Sr	89.399	+/-	5.148
Y	<LOD	:	19.275
Zr	<LOD	:	79.094
Nb	27.618	+/-	15.126
Ag	701.775	+/-	18.734
Cd	21.219	+/-	7.158
Sn	943.248	+/-	26.126
Sb	<LOD	:	31.340
Ba	<LOD	:	73.273
La	<LOD	:	68.360
Ce	<LOD	:	149.587
Au	636.538	+/-	37.078
Hg	<LOD	:	16.656
Pb	20790.650	+/-	302.277
Bi	<LOD	:	953.780
Th	<LOD	:	1125.470

mRFA -Ergebnisse

XL3t-69288

Reading No 5
Mode Mining
Time 2021-05-12 11:10
Duration 120.57
Units ppm
Sigma Value 2
Sequence Final
Flags
INV NR Gm1067
OBJEKT TAFELGEMAELENDE
MATERIAL HOLZ METALL FASSUNG
ANALYSESTELLE P35 HELM HORN
MESSAUFBAU STATIV
FILTER m30lo30hi30li30
User Login Raquet



Ele	ppm	+/-	$\pm 2\sigma$
Mg	<LOD	:	7973.237
Al	3964.188	+/-	551.325
Bal	887047.125	+/-	867.883
Si	17873.869	+/-	518.134
P	2526.475	+/-	106.195
S	7809.912	+/-	140.084
Cl	2471.139	+/-	52.139
K	3377.179	+/-	191.722
Ca	27863.432	+/-	459.273
Ti	<LOD	:	138.054
V	<LOD	:	28.145
Cr	<LOD	:	34.091
Mn	<LOD	:	91.416
Fe	2156.151	+/-	99.608
Co	<LOD	:	51.804
Ni	<LOD	:	46.768
Cu	11573.951	+/-	212.892
Zn	56.680	+/-	17.734
As	5054.049	+/-	158.531
Se	<LOD	:	21.066
Rb	<LOD	:	50.472
Sr	101.294	+/-	5.794
Y	<LOD	:	22.468
Zr	<LOD	:	91.547
Nb	34.228	+/-	17.772
Ag	905.468	+/-	22.243
Cd	26.815	+/-	7.587
Sn	1101.659	+/-	29.316
Sb	<LOD	:	35.787
Ba	<LOD	:	76.445
La	<LOD	:	71.521
Ce	<LOD	:	156.438
Au	621.737	+/-	39.578
Hg	<LOD	:	18.474
Pb	25303.855	+/-	387.677
Bi	<LOD	:	1257.030
Th	<LOD	:	1294.094

mRFA -Ergebnisse

XL3t-69288

Reading No 6
Mode Mining
Time 2021-05-12 11:15
Duration 121.38
Units ppm
Sigma Value 2
Sequence Final
Flags
INV NR Gm1067
OBJEKT TAFELGEMAELENDE
MATERIAL HOLZ METALL FASSUNG
ANALYSESTELLE P36 HELM HORN
MESSAUFBAU STATIV
FILTER m30lo30hi30li30
User Login Raquet



Ele	ppm	+/-	$\pm 2\sigma$
Mg	<LOD	:	9133.785
Al	4784.374	+/-	717.050
Bal	850572.563	+/-	1452.009
Si	18664.635	+/-	600.903
P	2068.548	+/-	118.748
S	10644.786	+/-	204.353
Cl	2830.919	+/-	66.043
K	3430.967	+/-	221.030
Ca	29753.084	+/-	534.815
Ti	<LOD	:	280.582
V	<LOD	:	42.332
Cr	<LOD	:	36.638
Mn	133.809	+/-	80.015
Fe	3500.856	+/-	144.068
Co	<LOD	:	70.414
Ni	<LOD	:	79.854
Cu	10732.358	+/-	217.509
Zn	73.827	+/-	20.783
As	7997.503	+/-	255.584
Se	<LOD	:	25.102
Rb	<LOD	:	84.569
Sr	70.742	+/-	7.748
Y	<LOD	:	40.947
Zr	<LOD	:	157.900
Nb	67.496	+/-	32.824
Ag	1001.940	+/-	29.028
Cd	<LOD	:	14.615
Sn	2375.774	+/-	57.073
Sb	<LOD	:	55.907
Ba	<LOD	:	108.013
La	<LOD	:	101.875
Ce	<LOD	:	224.316
Au	794.618	+/-	57.207
Hg	<LOD	:	30.618
Pb	50464.230	+/-	848.141
Bi	<LOD	:	1672.439
Th	<LOD	:	2160.234

mRFA -Ergebnisse

XL3t-69288

Reading No 7
Mode Mining
Time 2021-05-12 11:21
Duration 121.21
Units ppm
Sigma Value 2
Sequence Final
Flags
INV NR Gm1067
OBJEKT TAFELGEMAELDE
MATERIAL HOLZ METALL FASSUNG
ANALYSESTELLE P37 HELM HORN
MESSAUFBAU STATIV
FILTER m30lo30hi30li30
User Login Raquet



Ele	ppm	+/-	$\pm 2\sigma$
Mg	<LOD	:	6693.379
Al	2636.798	+/-	491.693
Bal	886714.813	+/-	917.633
Si	11165.076	+/-	387.226
P	428.450	+/-	66.710
S	4941.439	+/-	92.936
Cl	2202.330	+/-	46.542
K	3530.359	+/-	179.430
Ca	25989.104	+/-	417.351
Ti	<LOD	:	195.166
V	<LOD	:	29.790
Cr	<LOD	:	29.576
Mn	<LOD	:	113.547
Fe	2282.434	+/-	100.889
Co	<LOD	:	53.161
Ni	<LOD	:	50.155
Cu	24522.965	+/-	394.325
Zn	<LOD	:	32.904
As	4571.020	+/-	165.086
Se	<LOD	:	21.314
Rb	<LOD	:	66.521
Sr	87.206	+/-	5.937
Y	<LOD	:	24.802
Zr	<LOD	:	101.344
Nb	35.481	+/-	19.709
Ag	677.573	+/-	18.934
Cd	23.395	+/-	7.632
Sn	1460.278	+/-	34.081
Sb	<LOD	:	27.673
Ba	<LOD	:	78.974
La	<LOD	:	73.395
Ce	<LOD	:	161.046
Au	941.692	+/-	47.318
Hg	<LOD	:	20.600
Pb	27770.350	+/-	432.457
Bi	<LOD	:	1243.745
Th	<LOD	:	1427.316

mRFA -Ergebnisse

XL3t-69288

Reading No 8
Mode Mining
Time 2021-05-12 11:26
Duration 122.15
Units ppm
Sigma Value 2
Sequence Final
Flags
INV NR Gm1067
OBJEKT TAFELGEMAELEN
MATERIAL HOLZ METALL FASSUNG
ANALYSESTELLE P38 MANTEL PAPST
MESSAUFBAU STATIV
FILTER m30lo30hi30li30
User Login Raquet

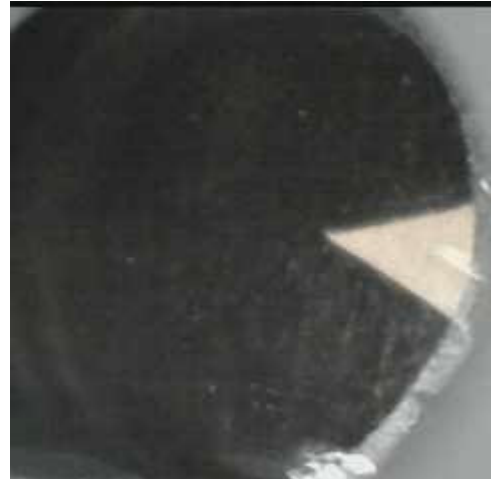


Ele	ppm	+/-	$\pm 2\sigma$
Mg	14423.905	+/-	7738.281
Al	4855.527	+/-	794.548
Bal	797507.250	+/-	2376.636
Si	16535.842	+/-	577.280
P	2268.661	+/-	122.236
S	10192.308	+/-	214.997
Cl	3437.109	+/-	82.705
K	5508.826	+/-	277.531
Ca	36398.000	+/-	693.242
Ti	<LOD	:	278.564
V	<LOD	:	37.662
Cr	<LOD	:	57.233
Mn	272.709	+/-	95.732
Fe	3251.321	+/-	152.746
Co	<LOD	:	77.990
Ni	<LOD	:	80.501
Cu	13348.097	+/-	282.711
Zn	77.723	+/-	24.922
As	9447.878	+/-	339.663
Se	<LOD	:	29.540
Rb	<LOD	:	127.981
Sr	50.512	+/-	10.122
Y	<LOD	:	59.780
Zr	<LOD	:	227.551
Nb	120.025	+/-	49.660
Ag	1736.357	+/-	49.616
Cd	<LOD	:	17.131
Sn	2201.662	+/-	66.098
Sb	<LOD	:	70.936
Ba	<LOD	:	146.117
La	<LOD	:	191.254
Ce	<LOD	:	302.902
Au	1003.204	+/-	74.013
Hg	<LOD	:	41.512
Pb	77051.172	+/-	1438.754
Bi	<LOD	:	2345.241
Th	<LOD	:	3235.263

mRFA -Ergebnisse

XL3t-69288

Reading No 9
Mode Mining
Time 2021-05-12 11:31
Duration 121.92
Units ppm
Sigma Value 2
Sequence Final
Flags
INV NR Gm1067
OBJEKT TAFELGEMAELEN
MATERIAL HOLZ METALL FASSUNG
ANALYSESTELLE P39 KLEID PAPST
MESSAUFBAU STATIV
FILTER m30lo30hi30li30
User Login Raquet



Ele	ppm	+/-	$\pm 2\sigma$
Mg	<LOD	:	8668.569
Al	4129.986	+/-	618.142
Bal	868883.563	+/-	1002.669
Si	17157.531	+/-	522.831
P	1469.421	+/-	105.053
S	12864.600	+/-	211.099
Cl	2410.907	+/-	51.780
K	4570.066	+/-	200.125
Ca	35463.301	+/-	547.056
Ti	<LOD	:	208.050
V	<LOD	:	33.796
Cr	<LOD	:	35.909
Mn	140.756	+/-	65.032
Fe	1718.980	+/-	89.794
Co	<LOD	:	48.175
Ni	<LOD	:	47.518
Cu	15568.356	+/-	266.787
Zn	88.324	+/-	20.218
As	5630.943	+/-	172.409
Se	<LOD	:	19.598
Rb	<LOD	:	54.892
Sr	93.081	+/-	6.212
Y	<LOD	:	24.988
Zr	<LOD	:	101.281
Nb	34.883	+/-	19.866
Ag	<LOD	:	6.816
Cd	17.000	+/-	7.240
Sn	379.964	+/-	17.121
Sb	<LOD	:	41.818
Ba	<LOD	:	79.108
La	<LOD	:	74.089
Ce	<LOD	:	161.022
Au	<LOD	:	38.488
Hg	<LOD	:	28.805
Pb	29350.260	+/-	444.843
Bi	<LOD	:	1191.327
Th	<LOD	:	1429.064

mRFA -Ergebnisse

XL3t-69288

Reading No 10
Mode Mining
Time 2021-05-12 11:35
Duration 121.30
Units ppm
Sigma Value 2
Sequence Final
Flags
INV NR Gm1067
OBJEKT TAFELGEMAELDE
MATERIAL HOLZ METALL FASSUNG
ANALYSESTELLE P40 KLEID PAPST
MESSAUFBAU STATIV
FILTER m30lo30hi30li30
User Login Raquet



Ele	ppm	+/-	$\pm 2\sigma$
Mg	<LOD	:	10322.991
Al	6775.573	+/-	799.043
Bal	832412.188	+/-	1510.859
Si	23211.443	+/-	655.671
P	4811.469	+/-	164.955
S	19323.105	+/-	323.069
Cl	2876.851	+/-	62.627
K	3122.932	+/-	187.772
Ca	26444.063	+/-	457.617
Ti	<LOD	:	273.822
V	<LOD	:	45.655
Cr	<LOD	:	35.267
Mn	171.423	+/-	77.598
Fe	1761.038	+/-	100.421
Co	<LOD	:	57.786
Ni	<LOD	:	65.148
Cu	34732.262	+/-	569.733
Zn	364.168	+/-	42.259
As	6292.231	+/-	209.484
Se	<LOD	:	29.971
Rb	<LOD	:	59.901
Sr	<LOD	:	15.856
Y	<LOD	:	31.946
Zr	<LOD	:	124.648
Nb	<LOD	:	48.718
Ag	11.729	+/-	5.874
Cd	13.902	+/-	8.673
Sn	365.740	+/-	19.849
Sb	<LOD	:	34.201
Ba	<LOD	:	98.686
La	<LOD	:	93.255
Ce	<LOD	:	204.446
Au	<LOD	:	102.300
Hg	6789.568	+/-	129.741
Pb	30492.654	+/-	539.476
Bi	<LOD	:	1348.947
Th	<LOD	:	1869.559

mRFA -Ergebnisse

XL3t-69288

Reading No 11
Mode Mining
Time 2021-05-12 11:39
Duration 120.55
Units ppm
Sigma Value 2
Sequence Final
Flags
INV NR Gm1067
OBJEKT TAFELGEMAELEN
MATERIAL HOLZ METALL FASSUNG
ANALYSESTELLE P41 MANTEL MARIA AUSSENSEITE
MESSAUFBAU STATIV
FILTER m30lo30hi30li30
User Login Raquet



Ele	ppm	+/-	$\pm 2\sigma$
Mg	<LOD	:	15493.406
Al	1303.225	+/-	769.369
Bal	808193.563	+/-	1428.088
Si	6100.400	+/-	395.347
P	<LOD	:	157.150
S	10265.194	+/-	177.262
Cl	1517.330	+/-	45.251
K	1838.332	+/-	165.144
Ca	130393.133	+/-	1689.090
Ti	<LOD	:	158.285
V	<LOD	:	34.149
Cr	<LOD	:	54.038
Mn	<LOD	:	130.804
Fe	323.325	+/-	59.598
Co	<LOD	:	39.954
Ni	<LOD	:	51.350
Cu	256.950	+/-	25.070
Zn	103.273	+/-	12.360
As	5830.089	+/-	185.955
Se	<LOD	:	19.998
Rb	<LOD	:	70.456
Sr	128.491	+/-	6.865
Y	<LOD	:	27.246
Zr	<LOD	:	108.140
Nb	37.124	+/-	21.581
Ag	<LOD	:	8.397
Cd	<LOD	:	18.167
Sn	44.551	+/-	12.364
Sb	<LOD	:	52.883
Ba	<LOD	:	95.725
La	<LOD	:	89.838
Ce	<LOD	:	195.561
Au	<LOD	:	37.122
Hg	<LOD	:	20.695
Pb	33656.711	+/-	517.217
Bi	<LOD	:	1213.740
Th	<LOD	:	1653.192

mRFA -Ergebnisse

XL3t-69288

Reading No 12
Mode Mining
Time 2021-05-12 11:44
Duration 121.95
Units ppm
Sigma Value 2
Sequence Final
Flags
INV NR Gm1067
OBJEKT TAFELGEMAELEN
MATERIAL HOLZ METALL FASSUNG
ANALYSESTELLE P42 WAPPEN 3
MESSAUFBAU STATIV
FILTER m30lo30hi30li30
User Login Raquet



Ele	ppm	+/-	$\pm 2\sigma$
Mg	<LOD	:	9054.641
Al	4205.936	+/-	602.994
Bal	868031.250	+/-	1111.666
Si	13908.817	+/-	458.505
P	651.419	+/-	84.931
S	9283.723	+/-	161.146
Cl	2345.854	+/-	51.045
K	2573.193	+/-	187.956
Ca	32153.270	+/-	529.952
Ti	<LOD	:	213.948
V	<LOD	:	45.354
Cr	<LOD	:	61.365
Mn	123.732	+/-	74.405
Fe	18985.602	+/-	380.865
Co	<LOD	:	125.976
Ni	<LOD	:	56.442
Cu	7323.348	+/-	155.327
Zn	189.819	+/-	29.784
As	5776.699	+/-	182.519
Se	<LOD	:	29.502
Rb	<LOD	:	56.951
Sr	32.447	+/-	9.494
Y	<LOD	:	26.884
Zr	<LOD	:	108.109
Nb	<LOD	:	31.632
Ag	<LOD	:	7.628
Cd	16.918	+/-	8.085
Sn	1035.289	+/-	29.272
Sb	<LOD	:	41.259
Ba	<LOD	:	88.172
La	<LOD	:	82.796
Ce	<LOD	:	181.662
Au	<LOD	:	82.970
Hg	5303.361	+/-	96.800
Pb	28026.727	+/-	456.864
Bi	<LOD	:	1174.802
Th	<LOD	:	1614.308

mRFA -Ergebnisse

XL3t-69288

Reading No 13
Mode Mining
Time 2021-05-12 11:48
Duration 120.28
Units ppm
Sigma Value 2
Sequence Final
Flags
INV NR Gm1067
OBJEKT TAFELGEMAELEN
MATERIAL HOLZ METALL FASSUNG
ANALYSESTELLE P43 WAPPEN 3
MESSAUFBAU STATIV
FILTER m30lo30hi30li30
User Login Raquet



Ele	ppm	+/-	$\pm 2\sigma$
Mg	<LOD	:	7037.734
Al	3910.640	+/-	532.199
Bal	880939.125	+/-	885.010
Si	13004.547	+/-	395.678
P	812.559	+/-	70.277
S	4219.230	+/-	70.473
Cl	2822.275	+/-	47.280
K	3030.934	+/-	163.335
Ca	28341.326	+/-	379.871
Ti	<LOD	:	153.155
V	<LOD	:	25.443
Cr	<LOD	:	30.209
Mn	<LOD	:	145.810
Fe	914.914	+/-	65.818
Co	<LOD	:	41.447
Ni	<LOD	:	47.639
Cu	41490.949	+/-	505.639
Zn	137.569	+/-	34.246
As	2478.789	+/-	105.318
Se	<LOD	:	19.628
Rb	<LOD	:	35.547
Sr	106.563	+/-	8.787
Y	<LOD	:	15.610
Zr	<LOD	:	64.453
Nb	<LOD	:	19.968
Ag	16.403	+/-	4.655
Cd	16.072	+/-	6.658
Sn	595.557	+/-	19.016
Sb	35.687	+/-	17.162
Ba	<LOD	:	71.454
La	<LOD	:	66.797
Ce	<LOD	:	145.640
Au	<LOD	:	73.299
Hg	5434.630	+/-	84.761
Pb	11692.359	+/-	172.271
Bi	<LOD	:	718.341
Th	<LOD	:	925.657

mRFA -Ergebnisse

XL3t-69288

Reading No 14
Mode Mining
Time 2021-05-12 11:51
Duration 120.83
Units ppm
Sigma Value 2
Sequence Final
Flags
INV NR Gm1067
OBJEKT TAFELGEMAELEN
MATERIAL HOLZ METALL FASSUNG
ANALYSESTELLE P44 WAPPEN 3
MESSAUFBAU STATIV
FILTER m30lo30hi30li30
User Login Raquet

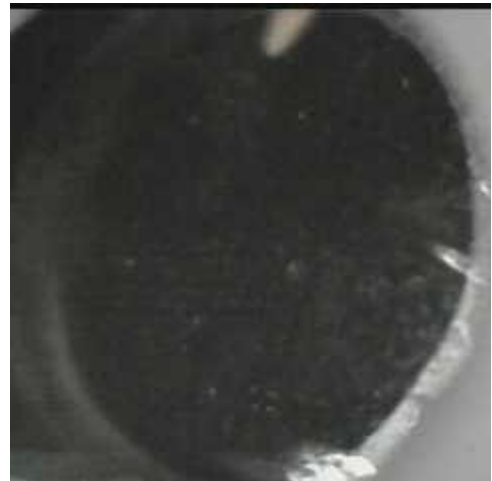


Ele	ppm	+/-	$\pm 2\sigma$
Mg	<LOD	:	7956.739
Al	3687.996	+/-	527.113
Bal	878086.688	+/-	970.006
Si	11858.968	+/-	387.676
P	607.572	+/-	67.833
S	4700.044	+/-	83.231
Cl	2817.582	+/-	51.637
K	3181.507	+/-	172.832
Ca	25033.064	+/-	385.132
Ti	<LOD	:	137.234
V	<LOD	:	25.991
Cr	<LOD	:	30.202
Mn	<LOD	:	134.080
Fe	723.774	+/-	63.559
Co	<LOD	:	41.547
Ni	<LOD	:	49.673
Cu	39333.527	+/-	549.596
Zn	<LOD	:	44.494
As	3504.352	+/-	145.618
Se	<LOD	:	20.199
Rb	<LOD	:	47.044
Sr	91.045	+/-	7.990
Y	<LOD	:	22.126
Zr	<LOD	:	91.379
Nb	<LOD	:	26.035
Ag	16.837	+/-	4.997
Cd	19.325	+/-	7.404
Sn	1766.890	+/-	36.714
Sb	37.340	+/-	18.430
Ba	<LOD	:	78.101
La	<LOD	:	72.944
Ce	<LOD	:	160.253
Au	<LOD	:	62.132
Hg	2851.113	+/-	57.054
Pb	21661.809	+/-	332.537
Bi	<LOD	:	1006.398
Th	<LOD	:	1296.182

mRFA -Ergebnisse

XL3t-69288

Reading No 15
Mode Mining
Time 2021-05-12 11:56
Duration 120.94
Units ppm
Sigma Value 2
Sequence Final
Flags
INV NR Gm1067
OBJEKT TAFELGEMAELEN
MATERIAL HOLZ METALL FASSUNG
ANALYSESTELLE P45 KAISERMANTEL
MESSAUFBAU STATIV
FILTER m30lo30hi30li30
User Login Raquet

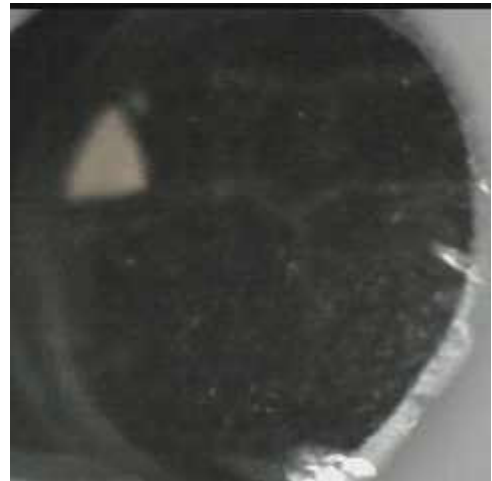


Ele	ppm	+/-	$\pm 2\sigma$
Mg	<LOD	:	7198.359
Al	3701.345	+/-	557.015
Bal	888797.500	+/-	757.058
Si	14340.347	+/-	450.330
P	377.458	+/-	70.180
S	4486.777	+/-	79.941
Cl	2463.869	+/-	46.934
K	3275.692	+/-	157.437
Ca	30509.289	+/-	408.761
Ti	<LOD	:	128.292
V	<LOD	:	26.341
Cr	<LOD	:	27.676
Mn	<LOD	:	79.417
Fe	919.785	+/-	60.545
Co	<LOD	:	35.889
Ni	<LOD	:	41.701
Cu	33299.090	+/-	442.851
Zn	<LOD	:	29.599
As	2495.283	+/-	105.786
Se	<LOD	:	15.753
Rb	<LOD	:	31.444
Sr	127.734	+/-	5.343
Y	<LOD	:	15.316
Zr	<LOD	:	64.553
Nb	<LOD	:	18.027
Ag	21.543	+/-	4.578
Cd	<LOD	:	8.994
Sn	202.691	+/-	12.032
Sb	28.635	+/-	15.975
Ba	<LOD	:	66.521
La	<LOD	:	62.352
Ce	<LOD	:	136.148
Au	<LOD	:	23.655
Hg	<LOD	:	12.995
Pb	14837.740	+/-	207.541
Bi	<LOD	:	857.315
Th	<LOD	:	930.536

mRFA -Ergebnisse

XL3t-69288

Reading No 16
Mode Mining
Time 2021-05-12 12:03
Duration 120.54
Units ppm
Sigma Value 2
Sequence Final
Flags
INV NR Gm1067
OBJEKT TAFELGEMAELDE
MATERIAL HOLZ METALL FASSUNG
ANALYSESTELLE P46 WAPPEN 2
MESSAUFBAU STATIV
FILTER m30lo30hi30li30
User Login Raquet

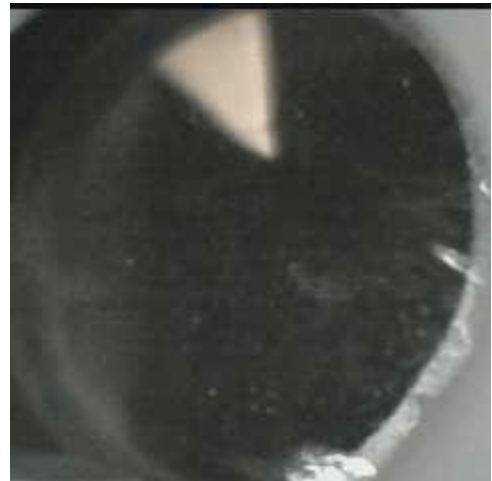


Ele	ppm	+/-	$\pm 2\sigma$
Mg	<LOD	:	6497.216
Al	2225.787	+/-	457.744
Bal	901027.938	+/-	673.890
Si	9340.389	+/-	340.390
P	471.832	+/-	65.709
S	4564.088	+/-	77.570
Cl	2739.581	+/-	48.091
K	2280.707	+/-	138.455
Ca	31330.938	+/-	415.748
Ti	<LOD	:	152.720
V	<LOD	:	26.279
Cr	<LOD	:	25.020
Mn	<LOD	:	79.804
Fe	587.821	+/-	52.976
Co	<LOD	:	34.253
Ni	<LOD	:	40.467
Cu	25994.502	+/-	353.871
Zn	<LOD	:	26.615
As	2863.756	+/-	106.730
Se	<LOD	:	15.508
Rb	<LOD	:	35.188
Sr	106.304	+/-	4.874
Y	<LOD	:	14.973
Zr	<LOD	:	64.325
Nb	18.138	+/-	12.023
Ag	23.228	+/-	4.722
Cd	21.108	+/-	6.593
Sn	1215.516	+/-	26.224
Sb	<LOD	:	32.956
Ba	<LOD	:	67.124
La	<LOD	:	62.848
Ce	<LOD	:	137.094
Au	<LOD	:	23.407
Hg	<LOD	:	13.039
Pb	15188.334	+/-	207.727
Bi	<LOD	:	774.805
Th	<LOD	:	926.349

mRFA -Ergebnisse

XL3t-69288

Reading No 17
Mode Mining
Time 2021-05-12 12:06
Duration 120.22
Units ppm
Sigma Value 2
Sequence Final
Flags
INV NR Gm1067
OBJEKT TAFELGEMAELDE
MATERIAL HOLZ METALL FASSUNG
ANALYSESTELLE P47 WAPPEN 2
MESSAUFBAU STATIV
FILTER m30lo30hi30li30
User Login Raquet



Ele	ppm	+/-	$\pm 2\sigma$
Mg	<LOD	:	6731.383
Al	932.821	+/-	412.459
Bal	904279.250	+/-	622.670
Si	6711.750	+/-	292.272
P	317.425	+/-	60.411
S	3484.357	+/-	61.770
Cl	2329.332	+/-	41.490
K	2168.537	+/-	128.163
Ca	31550.879	+/-	384.163
Ti	<LOD	:	145.520
V	<LOD	:	20.623
Cr	<LOD	:	23.937
Mn	<LOD	:	73.268
Fe	586.471	+/-	49.579
Co	<LOD	:	31.354
Ni	<LOD	:	38.314
Cu	34066.141	+/-	409.317
Zn	<LOD	:	28.653
As	1783.484	+/-	85.188
Se	<LOD	:	13.660
Rb	<LOD	:	27.025
Sr	108.151	+/-	4.580
Y	<LOD	:	12.001
Zr	<LOD	:	52.408
Nb	<LOD	:	21.177
Ag	20.276	+/-	4.545
Cd	16.458	+/-	6.303
Sn	847.457	+/-	21.572
Sb	<LOD	:	23.620
Ba	<LOD	:	65.167
La	<LOD	:	61.059
Ce	<LOD	:	133.144
Au	<LOD	:	19.526
Hg	<LOD	:	10.461
Pb	10775.342	+/-	140.041
Bi	<LOD	:	591.697
Th	<LOD	:	794.523

mRFA -Ergebnisse

XL3t-69288

Reading No 18
Mode Mining
Time 2021-05-12 12:11
Duration 120.82
Units ppm
Sigma Value 2
Sequence Final
Flags
INV NR Gm1067
OBJEKT TAFELGEMAELEN
MATERIAL HOLZ METALL FASSUNG
ANALYSESTELLE P48 WAPPEN 2
MESSAUFBAU STATIV
FILTER m30lo30hi30li30
User Login Raquet



Ele	ppm	+/-	$\pm 2\sigma$
Mg	<LOD	:	8001.023
Al	2863.022	+/-	562.575
Bal	875157.563	+/-	1204.213
Si	11093.265	+/-	431.683
P	1088.673	+/-	94.197
S	10068.721	+/-	204.051
Cl	2441.675	+/-	59.415
K	2546.348	+/-	179.388
Ca	32282.557	+/-	605.138
Ti	<LOD	:	184.222
V	<LOD	:	43.498
Cr	<LOD	:	37.060
Mn	<LOD	:	121.524
Fe	6939.335	+/-	219.072
Co	<LOD	:	90.692
Ni	<LOD	:	60.371
Cu	1538.343	+/-	59.491
Zn	111.148	+/-	26.760
As	8667.359	+/-	249.014
Se	<LOD	:	24.163
Rb	<LOD	:	78.008
Sr	<LOD	:	22.365
Y	<LOD	:	35.811
Zr	<LOD	:	139.394
Nb	<LOD	:	42.345
Ag	<LOD	:	11.895
Cd	<LOD	:	16.695
Sn	533.801	+/-	23.645
Sb	<LOD	:	33.871
Ba	<LOD	:	104.651
La	<LOD	:	98.718
Ce	<LOD	:	215.407
Au	<LOD	:	90.505
Hg	4972.807	+/-	101.219
Pb	39393.512	+/-	712.555
Bi	<LOD	:	1486.019
Th	<LOD	:	2203.828

mRFA -Ergebnisse

XL3t-69288

Reading No 19
Mode Mining
Time 2021-05-12 12:16
Duration 120.01
Units ppm
Sigma Value 2
Sequence Final
Flags
INV NR Gm1067
OBJEKT TAFELGEMAELEN
MATERIAL HOLZ METALL FASSUNG
ANALYSESTELLE P49 WAPPEN 1
MESSAUFBAU STATIV
FILTER m30lo30hi30li30
User Login Raquet



Ele	ppm	+/-	$\pm 2\sigma$
Mg	<LOD	:	10101.121
Al	2798.168	+/-	593.127
Bal	880553.500	+/-	1068.314
Si	12744.188	+/-	479.808
P	2843.654	+/-	133.369
S	15776.565	+/-	295.773
Cl	2026.261	+/-	51.692
K	3399.411	+/-	188.557
Ca	35210.367	+/-	631.167
Ti	<LOD	:	149.293
V	<LOD	:	29.845
Cr	<LOD	:	34.896
Mn	156.239	+/-	82.673
Fe	451.754	+/-	71.385
Co	<LOD	:	67.080
Ni	<LOD	:	58.360
Cu	278.006	+/-	27.956
Zn	601.194	+/-	41.721
As	8668.799	+/-	218.812
Se	<LOD	:	21.849
Rb	<LOD	:	69.055
Sr	<LOD	:	16.902
Y	<LOD	:	27.657
Zr	<LOD	:	109.334
Nb	<LOD	:	33.879
Ag	<LOD	:	10.518
Cd	<LOD	:	17.301
Sn	27.375	+/-	11.380
Sb	<LOD	:	30.402
Ba	<LOD	:	91.782
La	<LOD	:	86.437
Ce	<LOD	:	188.717
Au	<LOD	:	109.330
Hg	9130.971	+/-	161.326
Pb	25312.770	+/-	451.869
Bi	<LOD	:	1182.211
Th	<LOD	:	1816.686

mRFA -Ergebnisse

XL3t-69288

Reading No 20
Mode Mining
Time 2021-05-12 12:19
Duration 120.93
Units ppm
Sigma Value 2
Sequence Final
Flags
INV NR Gm1067
OBJEKT TAFELGEMAELEN
MATERIAL HOLZ METALL FASSUNG
ANALYSESTELLE P50 WAPPEN 1
MESSAUFBAU STATIV
FILTER m30lo30hi30li30
User Login Raquet



Ele	ppm	+/-	$\pm 2\sigma$
Mg	<LOD	:	8101.738
Al	3512.361	+/-	637.229
Bal	876489.000	+/-	1059.771
Si	11985.603	+/-	460.813
P	1024.063	+/-	106.535
S	13015.625	+/-	223.598
Cl	2163.917	+/-	51.385
K	3840.422	+/-	197.431
Ca	47652.883	+/-	748.603
Ti	<LOD	:	155.684
V	<LOD	:	36.981
Cr	<LOD	:	35.513
Mn	191.525	+/-	84.754
Fe	651.046	+/-	76.728
Co	<LOD	:	59.773
Ni	<LOD	:	57.320
Cu	363.332	+/-	30.011
Zn	628.215	+/-	42.704
As	7351.349	+/-	184.388
Se	<LOD	:	31.923
Rb	<LOD	:	52.512
Sr	<LOD	:	17.965
Y	<LOD	:	24.436
Zr	<LOD	:	96.323
Nb	<LOD	:	29.385
Ag	9.177	+/-	5.199
Cd	<LOD	:	11.548
Sn	26.888	+/-	10.940
Sb	<LOD	:	30.712
Ba	<LOD	:	88.364
La	<LOD	:	82.597
Ce	<LOD	:	181.091
Au	<LOD	:	109.557
Hg	10087.703	+/-	164.434
Pb	20927.512	+/-	348.990
Bi	<LOD	:	1052.346
Th	<LOD	:	1470.765

mRFA -Ergebnisse

XL3t-69288

Reading No 21
Mode Mining
Time 2021-05-12 12:22
Duration 121.16
Units ppm
Sigma Value 2
Sequence Final
Flags
INV NR Gm1067
OBJEKT TAFELGEMAELEN
MATERIAL HOLZ METALL FASSUNG
ANALYSESTELLE P51 WAPPEN 1
MESSAUFBAU STATIV
FILTER m30lo30hi30li30
User Login Raquet



Ele	ppm	+/-	$\pm 2\sigma$
Mg	<LOD	:	7903.444
Al	2315.253	+/-	518.022
Bal	894183.188	+/-	986.457
Si	9272.397	+/-	393.321
P	811.151	+/-	92.226
S	12662.821	+/-	273.647
Cl	1578.628	+/-	45.646
K	2761.610	+/-	167.160
Ca	27054.797	+/-	546.980
Ti	<LOD	:	128.783
V	<LOD	:	24.573
Cr	<LOD	:	37.111
Mn	<LOD	:	186.535
Fe	267.293	+/-	61.834
Co	<LOD	:	57.892
Ni	<LOD	:	55.090
Cu	197.310	+/-	24.418
Zn	233.681	+/-	22.818
As	9141.148	+/-	250.940
Se	<LOD	:	30.487
Rb	<LOD	:	88.229
Sr	80.442	+/-	8.830
Y	<LOD	:	32.697
Zr	<LOD	:	130.379
Nb	<LOD	:	39.557
Ag	<LOD	:	8.939
Cd	<LOD	:	11.707
Sn	<LOD	:	18.410
Sb	<LOD	:	33.686
Ba	<LOD	:	102.938
La	<LOD	:	96.492
Ce	<LOD	:	210.984
Au	<LOD	:	67.078
Hg	1873.579	+/-	50.892
Pb	37524.766	+/-	686.344
Bi	<LOD	:	1392.211
Th	<LOD	:	2241.965

mRFA -Ergebnisse

XL3t-69288

Reading No 22
Mode Mining
Time 2021-05-12 12:26
Duration 120.73
Units ppm
Sigma Value 2
Sequence Final
Flags
INV NR Gm1067
OBJEKT TAFELGEMAELEN
MATERIAL HOLZ METALL FASSUNG
ANALYSESTELLE P52 STIFTERIN 3
MESSAUFBAU STATIV
FILTER m30lo30hi30li30
User Login Raquet



Ele	ppm	+/-	$\pm 2\sigma$
Mg	<LOD	:	11744.485
Al	5244.373	+/-	596.608
Bal	897422.438	+/-	733.733
Si	9042.603	+/-	364.396
P	813.152	+/-	86.374
S	9837.756	+/-	161.184
Cl	2073.908	+/-	44.772
K	3646.836	+/-	167.776
Ca	34879.996	+/-	515.959
Ti	<LOD	:	237.659
V	<LOD	:	36.831
Cr	<LOD	:	29.434
Mn	184.821	+/-	66.024
Fe	3038.380	+/-	110.813
Co	<LOD	:	51.917
Ni	<LOD	:	43.995
Cu	5527.328	+/-	110.716
Zn	67.875	+/-	13.060
As	5391.747	+/-	143.182
Se	<LOD	:	16.503
Rb	<LOD	:	48.743
Sr	140.730	+/-	5.939
Y	<LOD	:	19.171
Zr	<LOD	:	79.220
Nb	24.494	+/-	15.264
Ag	7.817	+/-	4.059
Cd	15.928	+/-	6.230
Sn	346.638	+/-	14.519
Sb	<LOD	:	36.325
Ba	<LOD	:	66.851
La	<LOD	:	62.540
Ce	<LOD	:	136.405
Au	<LOD	:	28.825
Hg	<LOD	:	18.771
Pb	22293.227	+/-	316.097
Bi	<LOD	:	964.692
Th	<LOD	:	1128.673

mRFA -Ergebnisse

XL3t-69288

Reading No 23
Mode Mining
Time 2021-05-12 12:30
Duration 121.13
Units ppm
Sigma Value 2
Sequence Final
Flags
INV NR Gm1067
OBJEKT TAFELGEMAELEN
MATERIAL HOLZ METALL FASSUNG
ANALYSESTELLE P53 MANTELFUTTER MARIA
MESSAUFBAU STATIV
FILTER m30lo30hi30li30
User Login Raquet

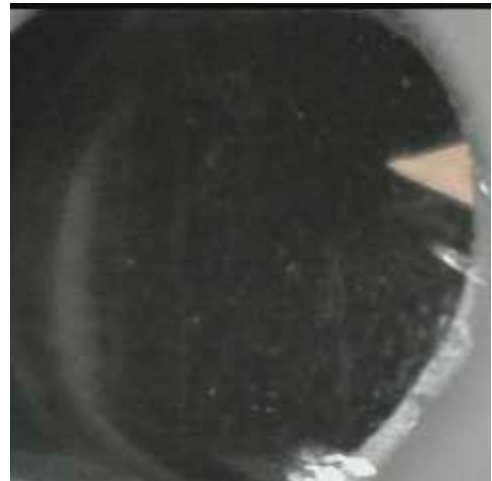


Ele	ppm	+/-	$\pm 2\sigma$
Mg	<LOD	:	4869.508
Al	665.820	+/-	330.065
Bal	904695.688	+/-	595.848
Si	3962.341	+/-	198.863
P	261.216	+/-	46.419
S	2939.585	+/-	44.396
Cl	2047.119	+/-	30.545
K	2365.994	+/-	133.228
Ca	16296.621	+/-	212.617
Ti	<LOD	:	116.353
V	<LOD	:	21.697
Cr	<LOD	:	25.845
Mn	<LOD	:	66.862
Fe	790.506	+/-	49.266
Co	<LOD	:	30.366
Ni	<LOD	:	38.741
Cu	62388.770	+/-	506.470
Zn	<LOD	:	35.695
As	605.560	+/-	43.212
Se	<LOD	:	7.768
Rb	<LOD	:	14.945
Sr	126.448	+/-	4.541
Y	<LOD	:	5.783
Zr	<LOD	:	26.167
Nb	<LOD	:	6.545
Ag	11.305	+/-	3.721
Cd	14.240	+/-	5.425
Sn	150.493	+/-	9.924
Sb	41.119	+/-	14.184
Ba	<LOD	:	57.032
La	<LOD	:	53.069
Ce	<LOD	:	115.528
Au	<LOD	:	10.793
Hg	<LOD	:	5.892
Pb	2545.049	+/-	43.037
Bi	<LOD	:	313.398
Th	<LOD	:	387.540

mRFA -Ergebnisse

XL3t-69288

Reading No 24
Mode Mining
Time 2021-05-12 12:34
Duration 120.16
Units ppm
Sigma Value 2
Sequence Final
Flags
INV NR Gm1067
OBJEKT TAFELGEMAELDE
MATERIAL HOLZ METALL FASSUNG
ANALYSESTELLE P54 MANTELFUTTER MARIA
MESSAUFBAU STATIV
FILTER m30lo30hi30li30
User Login Raquet

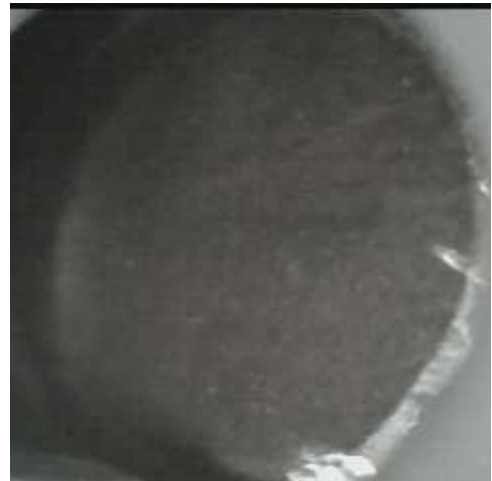


Ele	ppm	+/-	$\pm 2\sigma$
Mg	<LOD	:	9198.190
Al	1362.037	+/-	426.227
Bal	886206.313	+/-	958.602
Si	6210.428	+/-	278.337
P	566.313	+/-	63.266
S	4897.701	+/-	91.686
Cl	2397.102	+/-	48.440
K	2948.849	+/-	162.428
Ca	17843.803	+/-	312.943
Ti	<LOD	:	120.105
V	<LOD	:	22.507
Cr	<LOD	:	28.393
Mn	<LOD	:	96.443
Fe	515.843	+/-	56.894
Co	<LOD	:	38.575
Ni	<LOD	:	50.497
Cu	46941.695	+/-	714.668
Zn	<LOD	:	39.402
As	3232.075	+/-	155.319
Se	<LOD	:	21.535
Rb	<LOD	:	59.990
Sr	100.515	+/-	6.252
Y	<LOD	:	24.058
Zr	<LOD	:	99.132
Nb	<LOD	:	42.290
Ag	14.822	+/-	5.498
Cd	29.224	+/-	8.664
Sn	2479.795	+/-	48.439
Sb	35.527	+/-	20.780
Ba	<LOD	:	89.363
La	<LOD	:	83.404
Ce	<LOD	:	182.443
Au	<LOD	:	32.838
Hg	<LOD	:	18.319
Pb	24218.059	+/-	403.915
Bi	<LOD	:	1089.976
Th	<LOD	:	1546.360

mRFA -Ergebnisse

XL3t-69288

Reading No 25
Mode Mining
Time 2021-05-12 12:38
Duration 120.55
Units ppm
Sigma Value 2
Sequence Final
Flags
INV NR Gm1067
OBJEKT TAFELGEMAELEN
MATERIAL HOLZ METALL FASSUNG
ANALYSESTELLE P55 RUECKSEITE
MESSAUFBAU STATIV
FILTER m30lo30hi30li30
User Login Raquet



Ele	ppm	+/-	$\pm 2\sigma$
Mg	16637.221	+/-	7006.839
Al	15367.695	+/-	1061.110
Bal	813638.250	+/-	979.106
Si	62205.906	+/-	1040.225
P	1539.879	+/-	138.402
S	22250.945	+/-	259.070
Cl	1610.033	+/-	38.931
K	3224.864	+/-	154.477
Ca	45623.484	+/-	505.472
Ti	736.992	+/-	138.469
V	<LOD	:	56.833
Cr	<LOD	:	29.748
Mn	<LOD	:	71.174
Fe	5494.375	+/-	123.777
Co	<LOD	:	51.439
Ni	<LOD	:	30.299
Cu	<LOD	:	21.608
Zn	27.008	+/-	6.070
As	2339.005	+/-	69.116
Se	<LOD	:	10.409
Rb	<LOD	:	25.741
Sr	20.498	+/-	2.145
Y	<LOD	:	8.972
Zr	<LOD	:	42.081
Nb	21.754	+/-	7.362
Ag	6.306	+/-	2.981
Cd	17.497	+/-	4.660
Sn	17.802	+/-	6.162
Sb	<LOD	:	20.039
Ba	<LOD	:	46.037
La	<LOD	:	42.648
Ce	<LOD	:	93.207
Au	<LOD	:	14.629
Hg	<LOD	:	7.922
Pb	9194.021	+/-	104.636
Bi	<LOD	:	511.964
Th	<LOD	:	578.752