

mRFA -Ergebnisse

XL3t-69288

Reading No 3
Mode Mining
Time 2021-04-26 10:40
Duration 121.12
Units ppm
Sigma Value 2
Sequence Final
Flags
INV NR Gm1067
OBJEKT TAFELGEMAELEN
MATERIAL HOLZ METALL FASSUNG
ANALYSESTELLE P1 HINTERGRUND
MESSAUFBAU STATIV
FILTER m30lo30hi30li30
User Login Raquet



Ele	ppm	+/-	$\pm 2\sigma$
Mg	1.000	+/-	8325.563
Al	1852.071	+/-	699.702
Bal	817510.625	+/-	2614.101
Si	9300.842	+/-	438.258
P	1306.932	+/-	123.960
S	20471.688	+/-	441.064
Cl	3486.349	+/-	90.472
K	4077.182	+/-	260.157
Ca	23567.607	+/-	536.887
Ti	1.000	+/-	142.012
V	1.000	+/-	27.659
Cr	1.000	+/-	34.897
Mn	266.928	+/-	104.985
Fe	544.537	+/-	95.013
Co	52.460	+/-	43.169
Ni	1.000	+/-	85.733
Cu	311.240	+/-	36.468
Zn	325.129	+/-	30.799
As	16682.148	+/-	477.533
Se	53.315	+/-	38.082
Rb	1.000	+/-	108.391
Sr	27.432	+/-	15.238
Y	1.000	+/-	53.030
Zr	1.000	+/-	194.854
Nb	170.643	+/-	66.210
Ag	18.216	+/-	9.714
Cd	1.000	+/-	14.596
Sn	44.051	+/-	20.299
Sb	1.000	+/-	35.517
Ba	1.000	+/-	111.351
La	1.000	+/-	137.589
Ce	-339.000	+/-	230.863
Au	1.000	+/-	74.653
Hg	1639.411	+/-	68.832
Pb	98291.258	+/-	2000.444
Bi	1.000	+/-	1938.531
Th	1.000	+/-	2525.990

mRFA -Ergebnisse

XL3t-69288

Reading No 4
Mode Mining
Time 2021-04-26 10:45
Duration 121.57
Units ppm
Sigma Value 2
Sequence Final
Flags 3mm
INV NR Gm1067
OBJEKT TAFELGEMAELEN
MATERIAL HOLZ METALL FASSUNG
ANALYSESTELLE P2 SCHATTEN ENGELSKOPF
MESSAUFBAU STATIV
FILTER m30lo30hi30li30
User Login Raquet

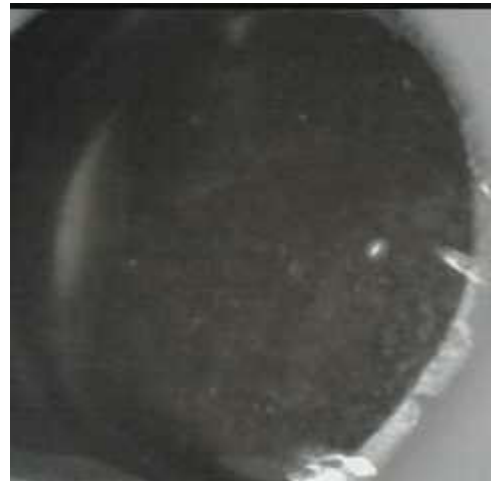


Ele	ppm	+/-	$\pm 2\sigma$
Mg	1.000	+/-	6277.570
Al	646.297	+/-	562.116
Bal	912431.688	+/-	905.951
Si	5197.662	+/-	420.308
P	201.111	+/-	109.008
S	10563.490	+/-	240.403
Cl	2485.980	+/-	82.625
K	2465.100	+/-	207.456
Ca	39039.445	+/-	802.849
Ti	175.270	+/-	123.433
V	1.000	+/-	39.065
Cr	33.346	+/-	30.934
Mn	1.000	+/-	86.003
Fe	8737.057	+/-	311.511
Co	1.000	+/-	84.538
Ni	1.000	+/-	34.926
Cu	176.258	+/-	28.313
Zn	65.695	+/-	14.007
As	3443.651	+/-	148.733
Se	1.000	+/-	22.151
Rb	1.000	+/-	26.584
Sr	139.090	+/-	8.227
Y	1.000	+/-	13.891
Zr	1.000	+/-	63.809
Nb	29.411	+/-	16.204
Ag	1.000	+/-	9.068
Cd	19.602	+/-	13.394
Sn	87.769	+/-	25.195
Sb	1.000	+/-	37.723
Ba	1.000	+/-	91.991
La	1.000	+/-	87.136
Ce	1.000	+/-	104.363
Au	1.000	+/-	24.531
Hg	1.000	+/-	16.797
Pb	14062.111	+/-	292.069
Bi	1.000	+/-	865.906
Th	1.000	+/-	798.018

mRFA -Ergebnisse

XL3t-69288

Reading No 5
Mode Mining
Time 2021-04-26 10:49
Duration 120.82
Units ppm
Sigma Value 2
Sequence Final
Flags
INV NR Gm1067
OBJEKT TAFELGEMAELEN
MATERIAL HOLZ METALL FASSUNG
ANALYSESTELLE P3 SCHATTEN ENGELSKOPF
MESSAUFBAU STATIV
FILTER m30lo30hi30li30
User Login Raquet



Ele	ppm	+/-	$\pm 2\sigma$
Mg	1.000	+/-	4634.704
Al	1201.487	+/-	463.469
Bal	912106.250	+/-	539.819
Si	4879.977	+/-	286.792
P	267.426	+/-	81.456
S	10155.682	+/-	153.799
Cl	1523.654	+/-	36.942
K	2455.514	+/-	146.740
Ca	41133.977	+/-	545.237
Ti	160.549	+/-	91.605
V	1.000	+/-	27.646
Cr	1.000	+/-	26.772
Mn	1.000	+/-	52.851
Fe	8192.043	+/-	179.749
Co	1.000	+/-	45.871
Ni	1.000	+/-	24.184
Cu	181.834	+/-	17.556
Zn	55.846	+/-	8.291
As	3659.602	+/-	98.691
Se	12.606	+/-	9.077
Rb	1.000	+/-	17.521
Sr	149.397	+/-	4.999
Y	1.000	+/-	8.353
Zr	1.000	+/-	42.530
Nb	27.389	+/-	9.907
Ag	5.976	+/-	3.620
Cd	15.211	+/-	5.612
Sn	77.925	+/-	8.924
Sb	1.000	+/-	19.963
Ba	1.000	+/-	38.926
La	1.000	+/-	36.401
Ce	-339.000	+/-	78.857
Au	1.000	+/-	13.551
Hg	1.000	+/-	8.952
Pb	13737.588	+/-	179.552
Bi	1.000	+/-	590.120
Th	1.000	+/-	508.699

mRFA -Ergebnisse

XL3t-69288

Reading No 6
Mode Mining
Time 2021-04-26 10:53
Duration 120.06
Units ppm
Sigma Value 2
Sequence Final
Flags
INV NR Gm1067
OBJEKT TAFELGEMAELEN
MATERIAL HOLZ METALL FASSUNG
ANALYSESTELLE P4 STERN
MESSAUFBAU STATIV
FILTER m30lo30hi30li30
User Login Raquet



Ele	ppm	+/-	$\pm 2\sigma$
Mg	1.000	+/-	7319.258
Al	3806.520	+/-	806.282
Bal	830835.813	+/-	1983.325
Si	12110.390	+/-	545.747
P	10686.021	+/-	293.494
S	16202.179	+/-	351.945
Cl	5814.020	+/-	138.261
K	3898.991	+/-	296.979
Ca	24657.715	+/-	535.131
Ti	1.000	+/-	128.040
V	1.000	+/-	33.666
Cr	1.000	+/-	48.782
Mn	193.582	+/-	90.699
Fe	730.199	+/-	89.453
Co	59.201	+/-	40.016
Ni	69.147	+/-	47.057
Cu	379.099	+/-	34.425
Zn	375.776	+/-	29.594
As	14002.193	+/-	383.459
Se	31.099	+/-	22.213
Rb	1.000	+/-	87.014
Sr	73.195	+/-	12.214
Y	1.000	+/-	38.772
Zr	1.000	+/-	146.178
Nb	95.604	+/-	47.817
Ag	1246.744	+/-	40.724
Cd	24.869	+/-	11.787
Sn	1.000	+/-	24.670
Sb	1.000	+/-	47.767
Ba	1.000	+/-	98.159
La	1.000	+/-	110.942
Ce	-339.000	+/-	224.305
Au	572.202	+/-	77.000
Hg	1243.793	+/-	53.039
Pb	72891.648	+/-	1397.579
Bi	1.000	+/-	1496.465
Th	1.000	+/-	2167.063

mRFA -Ergebnisse

XL3t-69288

Reading No 7
Mode Mining
Time 2021-04-26 10:57
Duration 121.67
Units ppm
Sigma Value 2
Sequence Final
Flags
INV NR Gm1067
OBJEKT TAFELGEMAELEN
MATERIAL HOLZ METALL FASSUNG
ANALYSESTELLE P5 KRONE MARIA
MESSAUFBAU STATIV
FILTER m30lo30hi30li30
User Login Raquet



Ele	ppm	+/-	$\pm 2\sigma$
Mg	10465.248	+/-	9219.646
Al	3300.162	+/-	871.994
Bal	767213.375	+/-	3173.709
Si	15971.530	+/-	668.025
P	27381.033	+/-	683.502
S	26479.846	+/-	634.583
Cl	2711.455	+/-	82.234
K	1669.051	+/-	237.612
Ca	15789.456	+/-	447.917
Ti	1.000	+/-	154.832
V	1.000	+/-	33.365
Cr	99.981	+/-	36.340
Mn	198.186	+/-	103.513
Fe	1871.266	+/-	134.811
Co	1.000	+/-	84.665
Ni	99.003	+/-	54.871
Cu	745.778	+/-	49.540
Zn	304.845	+/-	33.193
As	17310.549	+/-	507.716
Se	27.419	+/-	24.142
Rb	1.000	+/-	145.112
Sr	1.000	+/-	24.416
Y	1.000	+/-	55.113
Zr	1.000	+/-	201.593
Nb	122.792	+/-	68.365
Ag	70.152	+/-	13.558
Cd	1.000	+/-	19.629
Sn	2081.304	+/-	76.143
Sb	1.000	+/-	44.571
Ba	142.087	+/-	125.408
La	166.676	+/-	119.200
Ce	-339.000	+/-	383.219
Au	2421.782	+/-	126.614
Hg	1899.891	+/-	74.320
Pb	101457.195	+/-	2184.332
Bi	1.000	+/-	1997.192
Th	1.000	+/-	3199.432

mRFA -Ergebnisse

XL3t-69288

Reading No 8
Mode Mining
Time 2021-04-26 11:01
Duration 120.87
Units ppm
Sigma Value 2
Sequence Final
Flags
INV NR Gm1067
OBJEKT TAFELGEMAELEN
MATERIAL HOLZ METALL FASSUNG
ANALYSESTELLE P6 REICHSAPFEL
MESSAUFBAU STATIV
FILTER m30lo30hi30li30
User Login Raquet



Ele	ppm	+/-	$\pm 2\sigma$
Mg	1.000	+/-	6241.357
Al	653.906	+/-	566.071
Bal	893687.000	+/-	903.090
Si	9954.497	+/-	468.413
P	12850.455	+/-	293.443
S	14780.499	+/-	274.443
Cl	2540.018	+/-	62.058
K	1873.727	+/-	225.345
Ca	13961.236	+/-	296.080
Ti	1.000	+/-	148.241
V	1.000	+/-	17.400
Cr	79.237	+/-	21.613
Mn	1.000	+/-	68.129
Fe	5186.560	+/-	169.950
Co	1.000	+/-	48.775
Ni	1.000	+/-	35.569
Cu	261.636	+/-	25.280
Zn	122.262	+/-	15.806
As	7167.416	+/-	197.451
Se	1.000	+/-	15.665
Rb	1.000	+/-	44.495
Sr	100.617	+/-	6.764
Y	1.000	+/-	18.503
Zr	1.000	+/-	73.921
Nb	38.572	+/-	22.062
Ag	1153.793	+/-	27.395
Cd	48.708	+/-	9.067
Sn	2776.127	+/-	54.671
Sb	1.000	+/-	18.503
Ba	1.000	+/-	56.544
La	1.000	+/-	52.982
Ce	-339.000	+/-	115.536
Au	1014.062	+/-	52.681
Hg	1.000	+/-	19.403
Pb	31749.592	+/-	505.098
Bi	1.000	+/-	877.006
Th	1.000	+/-	1028.333

mRFA -Ergebnisse

XL3t-69288

Reading No 9
Mode Mining
Time 2021-04-26 11:05
Duration 122.17
Units ppm
Sigma Value 2
Sequence Final
Flags
INV NR Gm1067
OBJEKT TAFELGEMAELEN
MATERIAL HOLZ METALL FASSUNG
ANALYSESTELLE P7 ZEPTER
MESSAUFBAU STATIV
FILTER m30lo30hi30li30
User Login Raquet



Ele	ppm	+/-	$\pm 2\sigma$
Mg	14520.925	+/-	6365.535
Al	2249.507	+/-	574.566
Bal	865804.813	+/-	1169.085
Si	13708.971	+/-	475.030
P	2801.320	+/-	124.683
S	14427.561	+/-	254.066
Cl	3468.900	+/-	71.956
K	2789.758	+/-	209.683
Ca	22157.004	+/-	409.449
Ti	1.000	+/-	144.364
V	1.000	+/-	19.323
Cr	1.000	+/-	32.108
Mn	107.372	+/-	70.513
Fe	1533.909	+/-	91.711
Co	1.000	+/-	37.513
Ni	1.000	+/-	34.559
Cu	4430.532	+/-	103.110
Zn	156.559	+/-	18.207
As	8088.482	+/-	216.498
Se	1.000	+/-	14.433
Rb	1.000	+/-	51.918
Sr	104.509	+/-	7.070
Y	1.000	+/-	21.024
Zr	1.000	+/-	83.203
Nb	48.443	+/-	25.394
Ag	1321.086	+/-	30.579
Cd	25.544	+/-	8.587
Sn	1383.180	+/-	36.690
Sb	1.000	+/-	19.863
Ba	1.000	+/-	60.256
La	1.000	+/-	56.560
Ce	-339.000	+/-	124.534
Au	1012.910	+/-	53.370
Hg	1.000	+/-	17.806
Pb	39858.633	+/-	622.414
Bi	1.000	+/-	889.267
Th	1.000	+/-	1149.136

mRFA -Ergebnisse

XL3t-69288

Reading No 10
Mode Mining
Time 2021-04-26 11:10
Duration 120.83
Units ppm
Sigma Value 2
Sequence Final
Flags
INV NR Gm1067
OBJEKT TAFELGEMAELENDE
MATERIAL HOLZ METALL FASSUNG
ANALYSESTELLE P8 GEWAND ENGEL
MESSAUFBAU STATIV
FILTER m30lo30hi30li30
User Login Raquet



Ele	ppm	+/-	$\pm 2\sigma$
Mg	1.000	+/-	10465.700
Al	2790.312	+/-	740.337
Bal	807760.375	+/-	2730.767
Si	11445.192	+/-	503.046
P	1702.702	+/-	140.466
S	27763.820	+/-	664.889
Cl	3104.148	+/-	89.755
K	3091.776	+/-	239.203
Ca	16080.853	+/-	429.309
Ti	1.000	+/-	121.533
V	1.000	+/-	23.785
Cr	1.000	+/-	34.781
Mn	178.429	+/-	107.330
Fe	220.352	+/-	84.444
Co	48.485	+/-	42.349
Ni	57.372	+/-	56.668
Cu	223.109	+/-	33.739
Zn	120.719	+/-	17.834
As	12161.806	+/-	428.629
Se	1.000	+/-	20.467
Rb	1.000	+/-	105.762
Sr	19.349	+/-	11.657
Y	1.000	+/-	51.562
Zr	1.000	+/-	192.957
Nb	148.549	+/-	65.434
Ag	27.626	+/-	11.585
Cd	52.492	+/-	19.781
Sn	15357.403	+/-	359.398
Sb	1.000	+/-	40.732
Ba	1.000	+/-	193.267
La	132.962	+/-	125.748
Ce	-5.274	+/-	276.875
Au	1.000	+/-	54.763
Hg	1.000	+/-	31.085
Pb	97177.328	+/-	2015.544
Bi	1.000	+/-	1926.531
Th	1.000	+/-	3004.450

mRFA -Ergebnisse

XL3t-69288

Reading No 11
Mode Mining
Time 2021-04-26 11:15
Duration 120.70
Units ppm
Sigma Value 2
Sequence Final
Flags
INV NR Gm1067
OBJEKT TAFELGEMAELEN
MATERIAL HOLZ METALL FASSUNG
ANALYSESTELLE P9 MANTELSCHLIESSE MARIA
MESSAUFBAU STATIV
FILTER m30lo30hi30li30
User Login Raquet



Ele	ppm	+/-	$\pm 2\sigma$
Mg	1.000	+/-	5065.193
Al	974.659	+/-	475.749
Bal	898743.375	+/-	931.382
Si	7466.091	+/-	362.452
P	7040.256	+/-	189.701
S	14847.843	+/-	281.932
Cl	2466.357	+/-	58.581
K	1693.335	+/-	198.061
Ca	10354.646	+/-	252.536
Ti	1.000	+/-	91.798
V	1.000	+/-	17.244
Cr	44.352	+/-	21.510
Mn	1.000	+/-	68.155
Fe	849.814	+/-	76.811
Co	1.000	+/-	43.347
Ni	1.000	+/-	35.007
Cu	1025.846	+/-	44.005
Zn	128.235	+/-	15.278
As	8366.884	+/-	230.108
Se	1.000	+/-	14.781
Rb	1.000	+/-	53.559
Sr	74.342	+/-	6.705
Y	1.000	+/-	22.686
Zr	1.000	+/-	90.479
Nb	63.411	+/-	28.003
Ag	837.681	+/-	23.773
Cd	16.874	+/-	8.397
Sn	774.929	+/-	27.774
Sb	1.000	+/-	19.862
Ba	1.000	+/-	61.640
La	1.000	+/-	58.094
Ce	-339.000	+/-	126.360
Au	863.279	+/-	52.255
Hg	1.000	+/-	16.602
Pb	43367.738	+/-	699.402
Bi	1.000	+/-	954.803
Th	1.000	+/-	1270.172

mRFA -Ergebnisse

XL3t-69288

Reading No 12
Mode Mining
Time 2021-04-26 11:19
Duration 122.01
Units ppm
Sigma Value 2
Sequence Final
Flags
INV NR Gm1067
OBJEKT TAFELGEMAELEN
MATERIAL HOLZ METALL FASSUNG
ANALYSESTELLE P10 NIMBUS
MESSAUFBAU STATIV
FILTER m30lo30hi30li30
User Login Raquet



Ele	ppm	+/-	$\pm 2\sigma$
Mg	1.000	+/-	7018.535
Al	1716.247	+/-	714.654
Bal	819086.438	+/-	2529.462
Si	7387.999	+/-	451.980
P	14638.649	+/-	423.546
S	19507.939	+/-	508.466
Cl	2888.230	+/-	89.599
K	2164.640	+/-	217.999
Ca	20144.629	+/-	522.214
Ti	1.000	+/-	134.985
V	1.000	+/-	26.960
Cr	38.044	+/-	32.098
Mn	248.105	+/-	104.353
Fe	933.091	+/-	107.961
Co	85.592	+/-	47.696
Ni	1.000	+/-	79.127
Cu	514.369	+/-	43.276
Zn	312.347	+/-	32.847
As	15745.465	+/-	488.141
Se	1.000	+/-	29.011
Rb	1.000	+/-	144.740
Sr	35.820	+/-	15.065
Y	1.000	+/-	50.644
Zr	1.000	+/-	189.056
Nb	103.461	+/-	63.301
Ag	33.401	+/-	11.544
Cd	1.000	+/-	13.934
Sn	1020.737	+/-	49.323
Sb	1.000	+/-	39.173
Ba	1.000	+/-	170.371
La	1.000	+/-	117.296
Ce	-339.000	+/-	279.521
Au	1551.895	+/-	109.611
Hg	1811.929	+/-	71.823
Pb	90030.891	+/-	2014.352
Bi	1.000	+/-	1889.165
Th	1.000	+/-	3249.352

mRFA -Ergebnisse

XL3t-69288

Reading No 13
Mode Mining
Time 2021-04-26 11:23
Duration 122.15
Units ppm
Sigma Value 2
Sequence Final
Flags
INV NR Gm1067
OBJEKT TAFELGEMAELEN
MATERIAL HOLZ METALL FASSUNG
ANALYSESTELLE P11 BORTE EHRENTUCH
MESSAUFBAU STATIV
FILTER m30lo30hi30li30
User Login Raquet



Ele	ppm	+/-	$\pm 2\sigma$
Mg	1.000	+/-	6493.344
Al	1555.376	+/-	603.775
Bal	878965.063	+/-	1257.340
Si	6422.070	+/-	386.902
P	9817.342	+/-	265.770
S	14702.512	+/-	321.117
Cl	3239.500	+/-	83.024
K	2296.195	+/-	254.278
Ca	13823.265	+/-	331.614
Ti	1.000	+/-	100.335
V	1.000	+/-	20.914
Cr	63.257	+/-	23.504
Mn	132.769	+/-	84.457
Fe	2223.385	+/-	123.392
Co	1.000	+/-	44.090
Ni	1.000	+/-	39.805
Cu	381.356	+/-	31.967
Zn	136.824	+/-	17.289
As	10307.000	+/-	297.640
Se	1.000	+/-	17.323
Rb	1.000	+/-	80.898
Sr	80.536	+/-	8.513
Y	1.000	+/-	29.236
Zr	1.000	+/-	113.604
Nb	65.232	+/-	35.945
Ag	1444.325	+/-	38.740
Cd	1.000	+/-	9.009
Sn	1.000	+/-	20.456
Sb	1.000	+/-	25.185
Ba	1.000	+/-	78.505
La	1.000	+/-	73.635
Ce	-339.000	+/-	161.761
Au	786.148	+/-	61.206
Hg	1.000	+/-	24.191
Pb	53557.859	+/-	981.512
Bi	1.000	+/-	1183.019
Th	1.000	+/-	1790.089

mRFA -Ergebnisse

XL3t-69288

Reading No 14
Mode Mining
Time 2021-04-26 11:29
Duration 122.02
Units ppm
Sigma Value 2
Sequence Final
Flags
INV NR Gm1067
OBJEKT TAFELGEMAELEN
MATERIAL HOLZ METALL FASSUNG
ANALYSESTELLE P12 LENDENTUCH
MESSAUFBAU STATIV
FILTER m30lo30hi30li30
User Login Raquet

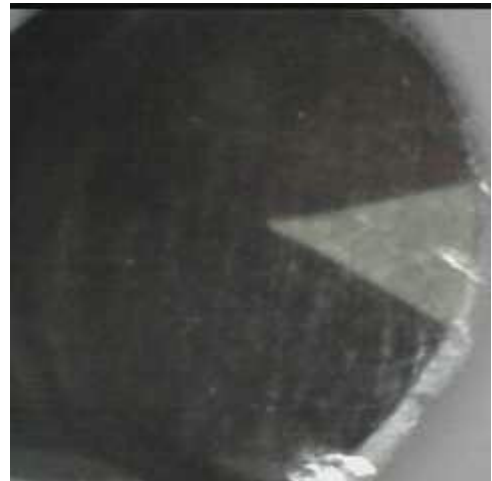


Ele	ppm	+/-	$\pm 2\sigma$
Mg	16435.934	+/-	7150.460
Al	2383.032	+/-	629.149
Bal	850142.688	+/-	1521.428
Si	10884.697	+/-	462.195
P	2751.678	+/-	155.749
S	36591.125	+/-	838.408
Cl	2468.688	+/-	70.361
K	464.673	+/-	122.669
Ca	6084.541	+/-	193.452
Ti	1.000	+/-	101.104
V	1.000	+/-	24.493
Cr	28.104	+/-	25.026
Mn	1.000	+/-	107.649
Fe	458.980	+/-	73.134
Co	42.344	+/-	33.885
Ni	1.000	+/-	56.476
Cu	143.144	+/-	24.180
Zn	123.923	+/-	13.840
As	12011.999	+/-	337.711
Se	1.000	+/-	18.030
Rb	1.000	+/-	80.272
Sr	126.960	+/-	9.658
Y	1.000	+/-	31.221
Zr	1.000	+/-	121.831
Nb	62.865	+/-	38.985
Ag	1.000	+/-	9.547
Cd	1.000	+/-	13.322
Sn	35.248	+/-	13.882
Sb	1.000	+/-	26.812
Ba	1.000	+/-	81.580
La	1.000	+/-	70.977
Ce	-339.000	+/-	156.078
Au	1.000	+/-	37.340
Hg	1.000	+/-	22.255
Pb	58759.395	+/-	1133.557
Bi	1.000	+/-	1256.773
Th	1.000	+/-	2146.834

mRFA -Ergebnisse

XL3t-69288

Reading No 15
Mode Mining
Time 2021-04-26 11:32
Duration 120.52
Units ppm
Sigma Value 2
Sequence Final
Flags
INV NR Gm1067
OBJEKT TAFELGEMAELEN
MATERIAL HOLZ METALL FASSUNG
ANALYSESTELLE P13 ROTLACK DICK
MESSAUFBAU STATIV
FILTER m30lo30hi30li30
User Login Raquet



Ele	ppm	+/-	$\pm 2\sigma$
Mg	1.000	+/-	8181.418
Al	2922.307	+/-	617.039
Bal	898734.125	+/-	584.284
Si	12213.627	+/-	476.231
P	1823.428	+/-	124.184
S	13892.938	+/-	187.717
Cl	1867.079	+/-	43.490
K	3437.618	+/-	151.939
Ca	48701.375	+/-	561.717
Ti	1.000	+/-	107.119
V	1.000	+/-	16.943
Cr	1.000	+/-	22.871
Mn	1.000	+/-	59.957
Fe	593.239	+/-	50.532
Co	1.000	+/-	19.318
Ni	1.000	+/-	22.653
Cu	559.411	+/-	24.743
Zn	78.593	+/-	8.681
As	3333.794	+/-	85.479
Se	1.000	+/-	7.761
Rb	1.000	+/-	19.077
Sr	152.393	+/-	4.660
Y	1.000	+/-	7.247
Zr	1.000	+/-	31.002
Nb	17.315	+/-	8.711
Ag	9.517	+/-	3.543
Cd	12.346	+/-	5.172
Sn	26.751	+/-	7.303
Sb	1.000	+/-	16.160
Ba	1.000	+/-	35.994
La	1.000	+/-	33.516
Ce	-339.000	+/-	73.374
Au	1.000	+/-	11.592
Hg	1.000	+/-	6.383
Pb	11624.104	+/-	137.967
Bi	1.000	+/-	368.530
Th	1.000	+/-	452.389

mRFA -Ergebnisse

XL3t-69288

Reading No 16
Mode Mining
Time 2021-04-26 11:38
Duration 122.05
Units ppm
Sigma Value 2
Sequence Final
Flags 3mm
INV NR Gm1067
OBJEKT TAFELGEMAELEN
MATERIAL HOLZ METALL FASSUNG
ANALYSESTELLE P14 KURFUEERSTENHUT
MESSAUFBAU STATIV
FILTER m30lo30hi30li30
User Login Raquet



Ele	ppm	+/-	$\pm 2\sigma$
Mg	1.000	+/-	8514.684
Al	4120.620	+/-	1006.065
Bal	873733.375	+/-	1591.007
Si	16786.611	+/-	854.790
P	10555.048	+/-	338.631
S	18621.703	+/-	386.668
Cl	7774.614	+/-	194.207
K	3555.306	+/-	388.078
Ca	15670.135	+/-	439.147
Ti	215.832	+/-	137.566
V	1.000	+/-	36.332
Cr	61.560	+/-	39.641
Mn	218.575	+/-	126.155
Fe	1138.887	+/-	136.476
Co	1.000	+/-	74.399
Ni	1.000	+/-	59.585
Cu	7077.263	+/-	197.674
Zn	634.641	+/-	78.575
As	3815.173	+/-	159.112
Se	1.000	+/-	23.835
Rb	1.000	+/-	34.270
Sr	1.000	+/-	21.771
Y	1.000	+/-	18.602
Zr	1.000	+/-	69.756
Nb	1.000	+/-	19.127
Ag	1137.963	+/-	59.470
Cd	1.000	+/-	19.143
Sn	863.169	+/-	77.284
Sb	1.000	+/-	52.533
Ba	1.000	+/-	156.599
La	1.000	+/-	149.907
Ce	1.000	+/-	185.824
Au	835.629	+/-	163.153
Hg	21377.279	+/-	419.996
Pb	11806.624	+/-	275.637
Bi	1.000	+/-	776.855
Th	1.000	+/-	977.556

mRFA -Ergebnisse

XL3t-69288

Reading No 17
Mode Mining
Time 2021-04-26 11:43
Duration 121.19
Units ppm
Sigma Value 2
Sequence Final
Flags 3mm
INV NR Gm1067
OBJEKT TAFELGEMAELENDE
MATERIAL HOLZ METALL FASSUNG
ANALYSESTELLE P15 KRONE KAISER
MESSAUFBAU STATIV
FILTER m30lo30hi30li30
User Login Raquet



Ele	ppm	+/-	$\pm 2\sigma$
Mg	1.000	+/-	7496.375
Al	3815.374	+/-	838.057
Bal	862390.125	+/-	1590.053
Si	21726.131	+/-	878.471
P	9018.959	+/-	300.583
S	20797.201	+/-	473.288
Cl	5108.887	+/-	144.483
K	1429.435	+/-	278.609
Ca	14207.206	+/-	413.340
Ti	1.000	+/-	151.676
V	1.000	+/-	22.611
Cr	48.003	+/-	30.180
Mn	1.000	+/-	116.292
Fe	2717.935	+/-	165.577
Co	1.000	+/-	56.279
Ni	1.000	+/-	43.034
Cu	12199.995	+/-	308.086
Zn	76.495	+/-	26.563
As	6832.430	+/-	256.272
Se	1.000	+/-	18.897
Rb	1.000	+/-	64.521
Sr	130.673	+/-	10.196
Y	1.000	+/-	26.340
Zr	1.000	+/-	104.458
Nb	35.744	+/-	31.325
Ag	528.693	+/-	36.341
Cd	30.736	+/-	20.026
Sn	3473.742	+/-	129.811
Sb	1.000	+/-	49.565
Ba	1.000	+/-	137.183
La	1.000	+/-	131.574
Ce	1.000	+/-	163.407
Au	299.089	+/-	58.657
Hg	1.000	+/-	24.116
Pb	35133.180	+/-	747.265
Bi	1.000	+/-	1200.895
Th	1.000	+/-	1402.360

mRFA -Ergebnisse

XL3t-69288

Reading No 18
Mode Mining
Time 2021-04-26 11:47
Duration 121.08
Units ppm
Sigma Value 2
Sequence Final
Flags 3mm
INV NR Gm1067
OBJEKT TAFELGEMAELEN
MATERIAL HOLZ METALL FASSUNG
ANALYSESTELLE P16 KRONE Koenig
MESSAUFBAU STATIV
FILTER m30lo30hi30li30
User Login Raquet



Ele	ppm	+/-	$\pm 2\sigma$
Mg	1.000	+/-	9743.622
Al	3849.072	+/-	926.817
Bal	856614.375	+/-	1809.041
Si	18650.580	+/-	884.685
P	11179.352	+/-	377.471
S	17385.350	+/-	459.595
Cl	8153.052	+/-	238.396
K	1908.927	+/-	334.023
Ca	19322.766	+/-	553.283
Ti	1.000	+/-	190.163
V	1.000	+/-	25.774
Cr	53.069	+/-	34.047
Mn	1.000	+/-	151.742
Fe	4758.360	+/-	240.222
Co	1.000	+/-	75.726
Ni	1.000	+/-	47.108
Cu	1514.765	+/-	79.416
Zn	160.741	+/-	25.445
As	7882.288	+/-	304.729
Se	1.000	+/-	20.785
Rb	1.000	+/-	91.842
Sr	111.409	+/-	11.173
Y	1.000	+/-	32.206
Zr	1.000	+/-	124.953
Nb	1.000	+/-	62.454
Ag	1031.842	+/-	58.874
Cd	22.574	+/-	22.104
Sn	2706.511	+/-	131.058
Sb	1.000	+/-	49.632
Ba	1.000	+/-	157.570
La	1.000	+/-	151.109
Ce	1.000	+/-	181.128
Au	950.583	+/-	82.502
Hg	1.000	+/-	32.082
Pb	43744.359	+/-	1015.247
Bi	1.000	+/-	1376.050
Th	1.000	+/-	1887.694

mRFA -Ergebnisse

XL3t-69288

Reading No 19
Mode Mining
Time 2021-04-26 11:51
Duration 120.71
Units ppm
Sigma Value 2
Sequence Final
Flags
INV NR Gm1067
OBJEKT TAFELGEMAELEN
MATERIAL HOLZ METALL FASSUNG
ANALYSESTELLE P17 GEWAND KOENIG
MESSAUFBAU STATIV
FILTER m30lo30hi30li30
User Login Raquet



Ele	ppm	+/-	$\pm 2\sigma$
Mg	1.000	+/-	5797.556
Al	2192.499	+/-	576.142
Bal	897527.188	+/-	893.752
Si	11790.771	+/-	470.447
P	5407.376	+/-	171.228
S	13178.397	+/-	259.008
Cl	2864.969	+/-	68.365
K	1775.837	+/-	219.417
Ca	16557.406	+/-	350.992
Ti	1.000	+/-	126.248
V	1.000	+/-	21.656
Cr	48.044	+/-	20.854
Mn	1.000	+/-	94.863
Fe	2863.190	+/-	126.138
Co	1.000	+/-	39.787
Ni	1.000	+/-	35.543
Cu	393.400	+/-	29.281
Zn	114.363	+/-	14.159
As	7358.642	+/-	209.418
Se	1.000	+/-	14.126
Rb	1.000	+/-	54.817
Sr	108.591	+/-	6.890
Y	1.000	+/-	19.700
Zr	1.000	+/-	78.773
Nb	32.356	+/-	23.726
Ag	1059.114	+/-	27.925
Cd	24.540	+/-	9.104
Sn	1630.726	+/-	41.786
Sb	1.000	+/-	24.862
Ba	1.000	+/-	63.402
La	1.000	+/-	59.289
Ce	-339.000	+/-	129.841
Au	571.394	+/-	44.760
Hg	1.000	+/-	15.286
Pb	34501.242	+/-	572.556
Bi	1.000	+/-	845.175
Th	1.000	+/-	1209.629

mRFA -Ergebnisse

XL3t-69288

Reading No 20
Mode Mining
Time 2021-04-26 11:55
Duration 121.61
Units ppm
Sigma Value 2
Sequence Final
Flags
INV NR Gm1067
OBJEKT TAFELGEMAELEN
MATERIAL HOLZ METALL FASSUNG
ANALYSESTELLE P18 SCHLIESSE GEAND KOENIG
MESSAUFBAU STATIV
FILTER m30lo30hi30li30
User Login Raquet



Ele	ppm	+/-	$\pm 2\sigma$
Mg	1.000	+/-	7419.576
Al	3098.389	+/-	735.688
Bal	834192.688	+/-	1933.575
Si	16323.611	+/-	618.006
P	9260.809	+/-	268.833
S	16315.109	+/-	371.662
Cl	5820.905	+/-	143.240
K	2461.686	+/-	257.986
Ca	23769.219	+/-	538.126
Ti	1.000	+/-	130.733
V	1.000	+/-	23.899
Cr	48.082	+/-	27.315
Mn	100.054	+/-	89.808
Fe	2180.976	+/-	132.592
Co	1.000	+/-	61.478
Ni	1.000	+/-	77.132
Cu	2029.322	+/-	76.874
Zn	157.715	+/-	21.007
As	12055.310	+/-	365.990
Se	1.000	+/-	20.722
Rb	1.000	+/-	97.851
Sr	123.434	+/-	11.073
Y	1.000	+/-	37.716
Zr	1.000	+/-	144.311
Nb	80.351	+/-	46.733
Ag	1471.360	+/-	44.634
Cd	1.000	+/-	10.324
Sn	1571.299	+/-	53.926
Sb	1.000	+/-	33.719
Ba	1.000	+/-	116.323
La	1.000	+/-	92.584
Ce	-339.000	+/-	220.675
Au	1341.051	+/-	80.267
Hg	1.000	+/-	26.253
Pb	67598.727	+/-	1344.428
Bi	1.000	+/-	1486.641
Th	1.000	+/-	2232.447

mRFA -Ergebnisse

XL3t-69288

Reading No 21
Mode Mining
Time 2021-04-26 11:59
Duration 120.81
Units ppm
Sigma Value 2
Sequence Final
Flags
INV NR Gm1067
OBJEKT TAFELGEMAELEN
MATERIAL HOLZ METALL FASSUNG
ANALYSESTELLE P19 BROKAT MANTEL KAISER
MESSAUFBAU STATIV
FILTER m30lo30hi30li30
User Login Raquet



Ele	ppm	+/-	$\pm 2\sigma$
Mg	1.000	+/-	8237.812
Al	2678.717	+/-	870.040
Bal	853896.563	+/-	1367.887
Si	14103.151	+/-	626.274
P	4437.286	+/-	185.639
S	8518.862	+/-	173.448
Cl	4860.832	+/-	103.448
K	3370.717	+/-	280.925
Ca	54453.637	+/-	894.063
Ti	1.000	+/-	148.420
V	1.000	+/-	18.671
Cr	50.453	+/-	21.875
Mn	1.000	+/-	94.029
Fe	1072.363	+/-	97.629
Co	1.000	+/-	39.618
Ni	1.000	+/-	51.268
Cu	5457.704	+/-	137.878
Zn	42.007	+/-	21.339
As	1.000	+/-	123.263
Se	1.000	+/-	15.554
Rb	1.000	+/-	37.790
Sr	102.989	+/-	6.722
Y	1.000	+/-	14.544
Zr	1.000	+/-	58.279
Nb	1.000	+/-	15.753
Ag	1297.710	+/-	31.908
Cd	205.503	+/-	17.693
Sn	27564.705	+/-	407.029
Sb	1.000	+/-	27.924
Ba	1.000	+/-	96.210
La	1.000	+/-	90.264
Ce	-339.000	+/-	198.178
Au	1785.872	+/-	64.682
Hg	187.342	+/-	15.364
Pb	15913.589	+/-	273.943
Bi	1.000	+/-	698.348
Th	1.000	+/-	833.902

mRFA -Ergebnisse

XL3t-69288

Reading No 22
Mode Mining
Time 2021-04-26 12:03
Duration 120.17
Units ppm
Sigma Value 2
Sequence Final
Flags
INV NR Gm1067
OBJEKT TAFELGEMAELEN
MATERIAL HOLZ METALL FASSUNG
ANALYSESTELLE P20 BROKAT MARIENKLEID
MESSAUFBAU STATIV
FILTER m30lo30hi30li30
User Login Raquet



Ele	ppm	+/-	$\pm 2\sigma$
Mg	1.000	+/-	7181.717
Al	4491.249	+/-	826.834
Bal	864948.938	+/-	1272.241
Si	19353.697	+/-	679.312
P	3613.242	+/-	161.772
S	10461.797	+/-	212.456
Cl	3358.677	+/-	80.499
K	3977.801	+/-	274.410
Ca	39217.977	+/-	717.582
Ti	126.309	+/-	101.262
V	1.000	+/-	20.750
Cr	59.700	+/-	21.751
Mn	1.000	+/-	141.958
Fe	1244.956	+/-	101.805
Co	1.000	+/-	40.953
Ni	1.000	+/-	48.403
Cu	1526.290	+/-	61.886
Zn	61.606	+/-	18.108
As	1107.957	+/-	144.785
Se	1.000	+/-	15.808
Rb	1.000	+/-	44.747
Sr	98.598	+/-	6.826
Y	1.000	+/-	16.448
Zr	1.000	+/-	66.314
Nb	1.000	+/-	25.693
Ag	1574.179	+/-	36.663
Cd	151.651	+/-	16.117
Sn	22100.713	+/-	332.393
Sb	1.000	+/-	27.168
Ba	1.000	+/-	86.098
La	1.000	+/-	81.254
Ce	-339.000	+/-	177.318
Au	1190.512	+/-	54.784
Hg	103.790	+/-	17.023
Pb	21230.242	+/-	364.529
Bi	1.000	+/-	779.231
Th	1.000	+/-	940.511

mRFA -Ergebnisse

XL3t-69288

Reading No 23
Mode Mining
Time 2021-04-26 12:09
Duration 121.13
Units ppm
Sigma Value 2
Sequence Final
Flags 3mm
INV NR Gm1067
OBJEKT TAFELGEMAELEN
MATERIAL HOLZ METALL FASSUNG
ANALYSESTELLE P21 BROKAT EHRENTUCH
MESSAUFBAU STATIV
FILTER m30lo30hi30li30
User Login Raquet



Ele	ppm	+/-	$\pm 2\sigma$
Mg	1.000	+/-	24477.867
Al	6187.849	+/-	1886.593
Bal	671662.625	+/-	8408.626
Si	15189.438	+/-	999.694
P	8525.643	+/-	397.313
S	9541.114	+/-	341.614
Cl	8012.206	+/-	315.189
K	5130.758	+/-	828.330
Ca	46016.574	+/-	1676.268
Ti	1.000	+/-	276.629
V	1.000	+/-	70.991
Cr	168.148	+/-	67.327
Mn	1.000	+/-	361.732
Fe	2371.296	+/-	266.107
Co	1.000	+/-	105.740
Ni	1.000	+/-	111.955
Cu	6428.409	+/-	295.777
Zn	1.000	+/-	61.427
As	1.000	+/-	507.085
Se	1.000	+/-	41.693
Rb	1.000	+/-	179.114
Sr	1.000	+/-	23.362
Y	1.000	+/-	84.236
Zr	1.000	+/-	309.292
Nb	111.339	+/-	102.665
Ag	1462.057	+/-	126.327
Cd	1.000	+/-	93.587
Sn	107482.430	+/-	3941.792
Sb	191.784	+/-	163.683
Ba	1.000	+/-	932.854
La	572.271	+/-	570.091
Ce	1598.109	+/-	734.410
Au	2784.365	+/-	195.343
Hg	2855.831	+/-	130.353
Pb	103707.695	+/-	3353.986
Bi	1.000	+/-	3276.408
Th	1.000	+/-	4758.598

mRFA -Ergebnisse

XL3t-69288

Reading No 24
Mode Mining
Time 2021-04-26 12:13
Duration 122.16
Units ppm
Sigma Value 2
Sequence Final
Flags 3mm
INV NR Gm1067
OBJEKT TAFELGEMAELEN
MATERIAL HOLZ METALL FASSUNG
ANALYSESTELLE P22 BROKAT EHRENTUCH 2
MESSAUFBAU STATIV
FILTER m30lo30hi30li30
User Login Raquet



Ele	ppm	+/-	$\pm 2\sigma$
Mg	16507.863	+/-	16345.379
Al	5023.642	+/-	1447.497
Bal	561728.125	+/-	9277.185
Si	15559.211	+/-	733.003
P	532.841	+/-	104.256
S	4648.911	+/-	131.624
Cl	3972.361	+/-	119.686
K	5609.039	+/-	357.293
Ca	33984.715	+/-	749.554
Ti	1.000	+/-	460.434
V	1.000	+/-	86.175
Cr	1.000	+/-	51.769
Mn	214.878	+/-	149.061
Fe	24644.752	+/-	633.329
Co	1.000	+/-	170.192
Ni	1.000	+/-	101.007
Cu	210245.781	+/-	5061.826
Zn	1.000	+/-	115.895
As	1.000	+/-	338.470
Se	1.000	+/-	45.076
Rb	1.000	+/-	106.134
Sr	15.618	+/-	15.484
Y	55.990	+/-	49.997
Zr	1.000	+/-	190.981
Nb	1.000	+/-	52.559
Ag	2340.173	+/-	143.476
Cd	110.636	+/-	75.391
Sn	74537.820	+/-	2444.376
Sb	758.900	+/-	158.183
Ba	491.890	+/-	442.001
La	1.000	+/-	576.065
Ce	602.229	+/-	525.508
Au	1448.196	+/-	137.421
Hg	1204.203	+/-	72.617
Pb	35762.336	+/-	1165.445
Bi	1.000	+/-	2163.281
Th	1.000	+/-	3114.819

mRFA -Ergebnisse

XL3t-69288

Reading No 25
Mode Mining
Time 2021-04-26 12:19
Duration 121.25
Units ppm
Sigma Value 2
Sequence Final
Flags
INV NR Gm1067
OBJEKT TAFELGEMAELEN
MATERIAL HOLZ METALL FASSUNG
ANALYSESTELLE P23 MANTEL PAPST
MESSAUFBAU STATIV
FILTER m30lo30hi30li30
User Login Raquet

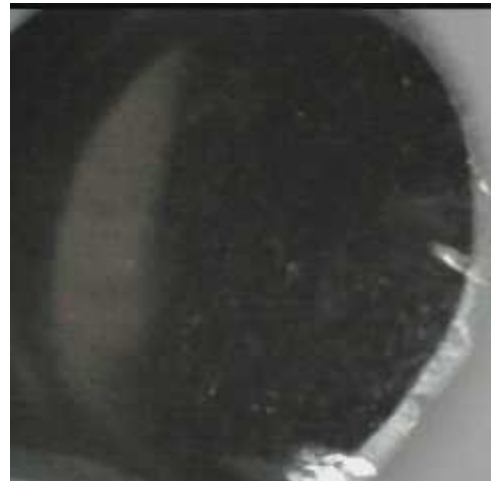


Ele	ppm	+/-	$\pm 2\sigma$
Mg	1.000	+/-	3955.696
Al	2236.376	+/-	455.111
Bal	919653.313	+/-	499.010
Si	9646.174	+/-	364.210
P	2496.708	+/-	102.949
S	8508.368	+/-	126.078
Cl	1343.062	+/-	32.813
K	1434.744	+/-	132.306
Ca	33923.340	+/-	436.882
Ti	161.078	+/-	80.348
V	1.000	+/-	14.623
Cr	26.550	+/-	17.158
Mn	1.000	+/-	52.268
Fe	1587.212	+/-	74.072
Co	1.000	+/-	25.190
Ni	1.000	+/-	24.382
Cu	331.120	+/-	20.802
Zn	55.115	+/-	9.467
As	3558.549	+/-	93.622
Se	1.000	+/-	8.972
Rb	17.457	+/-	16.390
Sr	120.276	+/-	4.450
Y	1.000	+/-	8.086
Zr	1.000	+/-	34.881
Nb	14.486	+/-	9.818
Ag	451.720	+/-	12.092
Cd	26.835	+/-	5.625
Sn	658.921	+/-	17.600
Sb	1.000	+/-	14.591
Ba	1.000	+/-	36.364
La	1.000	+/-	34.087
Ce	-339.000	+/-	73.942
Au	770.340	+/-	31.158
Hg	1.000	+/-	7.461
Pb	12978.229	+/-	160.937
Bi	1.000	+/-	399.872
Th	1.000	+/-	505.049

mRFA -Ergebnisse

XL3t-69288

Reading No 26
Mode Mining
Time 2021-04-26 12:22
Duration 120.53
Units ppm
Sigma Value 2
Sequence Final
Flags
INV NR Gm1067
OBJEKT TAFELGEMAELEN
MATERIAL HOLZ METALL FASSUNG
ANALYSESTELLE P24 MANTEL PAPST 2
MESSAUFBAU STATIV
FILTER m30lo30hi30li30
User Login Raquet



Ele	ppm	+/-	$\pm 2\sigma$
Mg	1.000	+/-	4752.607
Al	2656.945	+/-	520.382
Bal	890684.125	+/-	926.137
Si	9584.103	+/-	372.924
P	484.964	+/-	69.903
S	4594.660	+/-	92.097
Cl	2239.943	+/-	49.686
K	3818.931	+/-	192.918
Ca	22620.256	+/-	390.995
Ti	1.000	+/-	151.662
V	1.000	+/-	23.409
Cr	1.000	+/-	22.637
Mn	1.000	+/-	96.122
Fe	2415.384	+/-	104.958
Co	1.000	+/-	35.745
Ni	1.000	+/-	32.993
Cu	24704.752	+/-	412.704
Zn	1.000	+/-	21.476
As	4658.529	+/-	170.341
Se	1.000	+/-	14.427
Rb	1.000	+/-	47.754
Sr	95.551	+/-	6.254
Y	1.000	+/-	17.267
Zr	1.000	+/-	70.419
Nb	26.988	+/-	20.577
Ag	711.899	+/-	21.464
Cd	16.862	+/-	8.390
Sn	1463.792	+/-	37.417
Sb	1.000	+/-	23.609
Ba	1.000	+/-	58.992
La	1.000	+/-	55.557
Ce	-339.000	+/-	122.439
Au	691.532	+/-	43.599
Hg	1.000	+/-	13.976
Pb	28530.748	+/-	459.187
Bi	1.000	+/-	767.771
Th	1.000	+/-	1033.635

mRFA -Ergebnisse

XL3t-69288

Reading No 27
Mode Mining
Time 2021-04-26 12:27
Duration 121.38
Units ppm
Sigma Value 2
Sequence Final
Flags
INV NR Gm1067
OBJEKT TAFELGEMAELEN
MATERIAL HOLZ METALL FASSUNG
ANALYSESTELLE P25 MANTELSAUM PAPST
MESSAUFBAU STATIV
FILTER m30lo30hi30li30
User Login Raquet



Ele	ppm	+/-	$\pm 2\sigma$
Mg	1.000	+/-	5351.540
Al	2502.857	+/-	560.554
Bal	891497.188	+/-	833.790
Si	13124.039	+/-	464.121
P	4041.350	+/-	143.996
S	16748.703	+/-	274.266
Cl	2784.505	+/-	58.536
K	1751.903	+/-	176.396
Ca	23957.307	+/-	401.248
Ti	1.000	+/-	104.737
V	1.000	+/-	21.944
Cr	29.761	+/-	19.462
Mn	1.000	+/-	59.720
Fe	1562.398	+/-	85.070
Co	1.000	+/-	31.708
Ni	1.000	+/-	30.108
Cu	7255.841	+/-	141.057
Zn	131.411	+/-	16.898
As	6284.221	+/-	164.853
Se	1.000	+/-	12.396
Rb	1.000	+/-	40.043
Sr	97.286	+/-	5.546
Y	1.000	+/-	14.733
Zr	1.000	+/-	60.686
Nb	29.785	+/-	17.735
Ag	1141.807	+/-	25.073
Cd	19.085	+/-	7.009
Sn	896.657	+/-	26.377
Sb	36.522	+/-	17.469
Ba	1.000	+/-	48.112
La	1.000	+/-	45.087
Ce	-339.000	+/-	98.113
Au	443.849	+/-	36.218
Hg	1.000	+/-	12.233
Pb	25663.523	+/-	380.911
Bi	1.000	+/-	665.032
Th	1.000	+/-	867.568

mRFA -Ergebnisse

XL3t-69288

Reading No 28
Mode Mining
Time 2021-04-26 12:32
Duration 121.60
Units ppm
Sigma Value 2
Sequence Final
Flags 3mm
INV NR Gm1067
OBJEKT TAFELGEMAELEN
MATERIAL HOLZ METALL FASSUNG
ANALYSESTELLE P26 TIARA
MESSAUFBAU STATIV
FILTER m30lo30hi30li30
User Login Raquet



Ele	ppm	+/-	$\pm 2\sigma$
Mg	1.000	+/-	8391.443
Al	1861.656	+/-	808.263
Bal	862649.063	+/-	1908.223
Si	12610.493	+/-	716.257
P	5589.040	+/-	257.424
S	21401.418	+/-	572.167
Cl	5474.136	+/-	176.430
K	2990.953	+/-	334.764
Ca	17990.881	+/-	562.142
Ti	1.000	+/-	190.249
V	1.000	+/-	33.575
Cr	1.000	+/-	60.169
Mn	186.354	+/-	120.700
Fe	1665.444	+/-	155.299
Co	1.000	+/-	80.870
Ni	1.000	+/-	86.882
Cu	920.191	+/-	63.454
Zn	192.923	+/-	51.812
As	9386.460	+/-	335.273
Se	1.000	+/-	23.358
Rb	1.000	+/-	85.620
Sr	1.000	+/-	18.885
Y	1.000	+/-	35.039
Zr	1.000	+/-	131.865
Nb	1.000	+/-	41.679
Ag	976.647	+/-	59.361
Cd	30.952	+/-	25.058
Sn	2953.789	+/-	143.189
Sb	1.000	+/-	56.461
Ba	1.000	+/-	177.377
La	1.000	+/-	171.357
Ce	1.000	+/-	211.242
Au	668.523	+/-	135.454
Hg	10906.119	+/-	268.779
Pb	41544.934	+/-	1027.079
Bi	1.000	+/-	1431.314
Th	1.000	+/-	2173.354

mRFA -Ergebnisse

XL3t-69288

Reading No 29
Mode Mining
Time 2021-04-26 12:36
Duration 120.32
Units ppm
Sigma Value 2
Sequence Final
Flags 3mm
INV NR Gm1067
OBJEKT TAFELGEMAELEN
MATERIAL HOLZ METALL FASSUNG
ANALYSESTELLE P27 MANTELSAUM BISCHOF
MESSAUFBAU STATIV
FILTER m30lo30hi30li30
User Login Raquet



Ele	ppm	+/-	$\pm 2\sigma$
Mg	1.000	+/-	7113.995
Al	2422.126	+/-	766.617
Bal	900311.125	+/-	1111.507
Si	13283.075	+/-	704.226
P	2047.222	+/-	165.597
S	13125.011	+/-	301.913
Cl	3094.174	+/-	102.806
K	2309.680	+/-	272.477
Ca	27760.602	+/-	638.887
Ti	177.597	+/-	123.382
V	1.000	+/-	27.926
Cr	1.000	+/-	40.100
Mn	1.000	+/-	94.887
Fe	2505.242	+/-	161.608
Co	1.000	+/-	56.731
Ni	1.000	+/-	39.152
Cu	9536.271	+/-	254.045
Zn	265.339	+/-	32.588
As	4279.769	+/-	176.143
Se	1.000	+/-	17.868
Rb	1.000	+/-	45.444
Sr	94.592	+/-	7.623
Y	1.000	+/-	16.669
Zr	1.000	+/-	68.916
Nb	1.000	+/-	31.052
Ag	508.290	+/-	33.437
Cd	17.471	+/-	15.537
Sn	1101.938	+/-	67.147
Sb	42.334	+/-	39.577
Ba	1.000	+/-	105.280
La	1.000	+/-	102.286
Ce	1.000	+/-	124.784
Au	638.250	+/-	57.545
Hg	1.000	+/-	17.032
Pb	16479.863	+/-	354.693
Bi	1.000	+/-	834.434
Th	1.000	+/-	948.533

mRFA -Ergebnisse

XL3t-69288

Reading No 30
Mode Mining
Time 2021-04-26 12:40
Duration 122.13
Units ppm
Sigma Value 2
Sequence Final
Flags
INV NR Gm1067
OBJEKT TAFELGEMAELEN
MATERIAL HOLZ METALL FASSUNG
ANALYSESTELLE P28 GEWAND BISCHOF
MESSAUFBAU STATIV
FILTER m30lo30hi30li30
User Login Raquet



Ele	ppm	+/-	$\pm 2\sigma$
Mg	1.000	+/-	5431.926
Al	4758.950	+/-	639.279
Bal	882400.313	+/-	974.099
Si	15815.774	+/-	518.125
P	1329.238	+/-	106.351
S	14058.265	+/-	251.922
Cl	2664.606	+/-	60.095
K	3358.943	+/-	222.057
Ca	27308.869	+/-	481.283
Ti	1.000	+/-	146.565
V	1.000	+/-	20.485
Cr	22.022	+/-	21.048
Mn	77.188	+/-	70.537
Fe	2604.737	+/-	115.944
Co	1.000	+/-	38.044
Ni	1.000	+/-	34.492
Cu	1616.977	+/-	54.829
Zn	79.741	+/-	12.179
As	6908.604	+/-	195.662
Se	1.000	+/-	13.178
Rb	1.000	+/-	46.277
Sr	73.751	+/-	5.932
Y	1.000	+/-	18.911
Zr	1.000	+/-	76.247
Nb	38.177	+/-	22.934
Ag	1227.731	+/-	28.667
Cd	23.705	+/-	8.243
Sn	1397.009	+/-	36.124
Sb	1.000	+/-	18.873
Ba	1.000	+/-	57.029
La	1.000	+/-	53.812
Ce	-339.000	+/-	116.777
Au	1.000	+/-	26.110
Hg	1.000	+/-	15.155
Pb	34235.520	+/-	534.344
Bi	1.000	+/-	855.338
Th	1.000	+/-	1063.490

mRFA -Ergebnisse

XL3t-69288

Reading No 31
Mode Mining
Time 2021-04-26 12:46
Duration 122.06
Units ppm
Sigma Value 2
Sequence Final
Flags
INV NR Gm1067
OBJEKT TAFELGEMAELEN
MATERIAL HOLZ METALL FASSUNG
ANALYSESTELLE P29 MITRA
MESSAUFBAU STATIV
FILTER m30lo30hi30li30
User Login Raquet



Ele	ppm	+/-	$\pm 2\sigma$
Mg	1.000	+/-	6001.746
Al	1430.963	+/-	604.387
Bal	884736.188	+/-	995.994
Si	12605.380	+/-	506.939
P	6587.011	+/-	200.128
S	17110.510	+/-	333.727
Cl	3570.406	+/-	82.689
K	2152.965	+/-	227.335
Ca	19570.910	+/-	400.958
Ti	1.000	+/-	93.873
V	1.000	+/-	17.542
Cr	46.230	+/-	21.858
Mn	96.383	+/-	73.292
Fe	1781.201	+/-	100.494
Co	1.000	+/-	35.179
Ni	1.000	+/-	36.040
Cu	3024.912	+/-	84.314
Zn	143.586	+/-	17.070
As	8359.825	+/-	225.028
Se	1.000	+/-	14.689
Rb	1.000	+/-	60.639
Sr	144.615	+/-	7.695
Y	1.000	+/-	20.212
Zr	1.000	+/-	80.943
Nb	31.705	+/-	24.409
Ag	1377.469	+/-	33.103
Cd	18.848	+/-	8.611
Sn	739.266	+/-	29.245
Sb	1.000	+/-	26.312
Ba	1.000	+/-	61.571
La	1.000	+/-	58.168
Ce	-339.000	+/-	126.919
Au	958.789	+/-	52.565
Hg	1.000	+/-	15.934
Pb	35512.898	+/-	605.163
Bi	1.000	+/-	869.501
Th	1.000	+/-	1303.596

mRFA -Ergebnisse

XL3t-69288

Reading No 32
Mode Mining
Time 2021-04-26 12:50
Duration 121.54
Units ppm
Sigma Value 2
Sequence Final
Flags
INV NR Gm1067
OBJEKT TAFELGEMAELEN
MATERIAL HOLZ METALL FASSUNG
ANALYSESTELLE P30 FLUEGEL
MESSAUFBAU STATIV
FILTER m30lo30hi30li30
User Login Raquet



Ele	ppm	+/-	$\pm 2\sigma$
Mg	1.000	+/-	4407.292
Al	1205.025	+/-	450.924
Bal	910212.500	+/-	564.496
Si	6847.998	+/-	315.321
P	357.692	+/-	76.415
S	8130.290	+/-	121.283
Cl	1921.642	+/-	40.022
K	3705.204	+/-	156.187
Ca	39919.266	+/-	498.373
Ti	1.000	+/-	80.353
V	1.000	+/-	15.280
Cr	1.000	+/-	17.405
Mn	1.000	+/-	50.739
Fe	335.180	+/-	45.131
Co	1.000	+/-	20.269
Ni	1.000	+/-	23.893
Cu	8542.907	+/-	135.396
Zn	14.332	+/-	11.794
As	3766.539	+/-	102.577
Se	1.000	+/-	9.161
Rb	1.000	+/-	26.915
Sr	120.482	+/-	4.639
Y	1.000	+/-	9.081
Zr	1.000	+/-	38.716
Nb	16.127	+/-	10.920
Ag	7.314	+/-	3.791
Cd	14.658	+/-	5.767
Sn	64.993	+/-	8.893
Sb	1.000	+/-	22.453
Ba	1.000	+/-	40.643
La	1.000	+/-	37.789
Ce	-339.000	+/-	82.516
Au	1.000	+/-	13.596
Hg	1.000	+/-	7.448
Pb	14817.865	+/-	187.711
Bi	1.000	+/-	434.870
Th	1.000	+/-	559.542