

mRFA -Ergebnisse

XL3t-69288

Reading No 11
Mode Mining
Time 2021-03-08 12:28
Duration 121.92
Units ppm
Sigma Value 2
Sequence Final
Flags
INV NR Gm1807
OBJEKT TAFELGEMAELEN
MATERIAL HOLZ METALL FASSUNG
ANALYSESTELLE P1 HINTERGRUND
MESSAUFBAU STATIV
FILTER m30lo30hi30li30
User Login Raquet

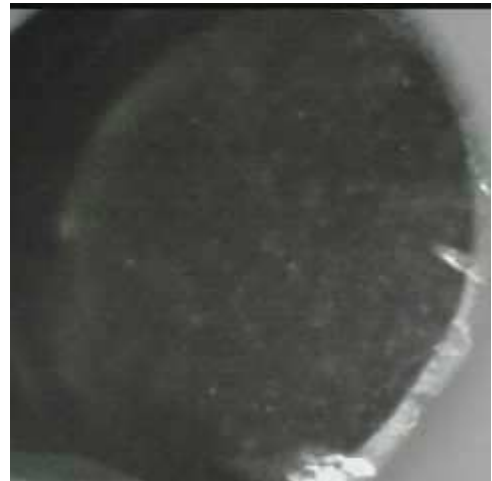


Ele	ppm	+/-	$\pm 2\sigma$
Mg	1.000	+/-	11284.559
Al	9011.952	+/-	1313.788
Bal	737927.313	+/-	1253.764
Si	32019.801	+/-	924.733
P	44342.098	+/-	468.295
S	11719.258	+/-	143.376
Cl	1.000	+/-	31.691
K	2716.967	+/-	162.206
Ca	149021.203	+/-	883.217
Ti	785.849	+/-	127.849
V	30.209	+/-	22.282
Cr	84.848	+/-	21.355
Mn	1.000	+/-	53.106
Fe	7734.125	+/-	139.789
Co	1.000	+/-	40.517
Ni	1.000	+/-	23.230
Cu	35.665	+/-	12.749
Zn	98.987	+/-	14.278
As	1.000	+/-	6.700
Se	1.000	+/-	6.452
Rb	22.942	+/-	5.002
Sr	397.255	+/-	6.780
Y	1.000	+/-	1.209
Zr	1.000	+/-	6.429
Nb	1.000	+/-	1.757
Ag	13.920	+/-	4.217
Cd	1.000	+/-	8.850
Sn	14.267	+/-	8.062
Sb	1.000	+/-	18.026
Ba	1.000	+/-	41.599
La	1.000	+/-	38.787
Ce	-339.000	+/-	84.019
Au	3953.715	+/-	57.638
Hg	6.957	+/-	5.278
Pb	62.674	+/-	6.123
Bi	1.000	+/-	73.112
Th	1.000	+/-	104.247

mRFA -Ergebnisse

XL3t-69288

Reading No 12
Mode Mining
Time 2021-03-08 12:33
Duration 121.07
Units ppm
Sigma Value 2
Sequence Final
Flags
INV NR Gm1807
OBJEKT TAFELGEMAELEN
MATERIAL HOLZ METALL FASSUNG
ANALYSESTELLE P2 HINTERGRUND 2
MESSAUFBAU STATIV
FILTER m30lo30hi30li30
User Login Raquet



Ele	ppm	+/-	$\pm 2\sigma$
Mg	8864.229	+/-	7994.345
Al	6228.012	+/-	857.978
Bal	821424.625	+/-	1372.218
Si	27429.109	+/-	720.244
P	1532.362	+/-	132.768
S	21238.918	+/-	322.185
Cl	1623.396	+/-	43.611
K	2775.259	+/-	174.295
Ca	41758.324	+/-	603.378
Ti	1.000	+/-	157.607
V	1.000	+/-	19.777
Cr	1.000	+/-	23.057
Mn	180.905	+/-	73.322
Fe	3595.219	+/-	124.375
Co	1.000	+/-	40.884
Ni	1.000	+/-	33.408
Cu	33479.453	+/-	518.387
Zn	842.351	+/-	39.068
As	6333.603	+/-	173.137
Se	1.000	+/-	17.514
Rb	1.000	+/-	28.333
Sr	403.953	+/-	11.364
Y	1.000	+/-	14.761
Zr	1.000	+/-	60.734
Nb	22.040	+/-	17.269
Ag	1.000	+/-	7.651
Cd	1.000	+/-	8.219
Sn	58.171	+/-	13.278
Sb	123.503	+/-	25.219
Ba	1.000	+/-	72.962
La	1.000	+/-	63.319
Ce	-339.000	+/-	138.214
Au	1.000	+/-	23.013
Hg	1.000	+/-	13.467
Pb	22086.516	+/-	350.971
Bi	1.000	+/-	845.402
Th	1.000	+/-	867.515

mRFA -Ergebnisse

XL3t-69288

Reading No 13
Mode Mining
Time 2021-03-08 12:37
Duration 120.01
Units ppm
Sigma Value 2
Sequence Final
Flags 3mm
INV NR Gm1807
OBJEKT TAFELGEMAELEN
MATERIAL HOLZ METALL FASSUNG
ANALYSESTELLE P3 HINTERGRUND RELIEF
MESSAUFBAU STATIV
FILTER m30lo30hi30li30
User Login Raquet



Ele	ppm	+/-	$\pm 2\sigma$
Mg	1.000	+/-	14436.207
Al	7090.758	+/-	1679.062
Bal	756317.313	+/-	3039.281
Si	36312.605	+/-	1368.359
P	19295.781	+/-	492.599
S	25423.863	+/-	416.095
Cl	3022.733	+/-	121.417
K	4983.658	+/-	536.292
Ca	118191.055	+/-	1774.460
Ti	1106.218	+/-	267.232
V	53.493	+/-	51.298
Cr	118.497	+/-	51.465
Mn	177.420	+/-	176.732
Fe	18810.877	+/-	579.885
Co	1.000	+/-	164.084
Ni	1.000	+/-	58.691
Cu	111.074	+/-	37.070
Zn	103.770	+/-	41.932
As	1.000	+/-	28.757
Se	1.000	+/-	20.099
Rb	39.553	+/-	15.965
Sr	640.267	+/-	23.515
Y	1.000	+/-	4.725
Zr	1.000	+/-	21.069
Nb	1.000	+/-	6.245
Ag	1716.099	+/-	78.508
Cd	1.000	+/-	23.915
Sn	1.000	+/-	51.016
Sb	1.000	+/-	87.341
Ba	1.000	+/-	221.505
La	151.377	+/-	150.850
Ce	1.000	+/-	266.557
Au	6204.412	+/-	195.565
Hg	66.981	+/-	20.015
Pb	62.180	+/-	17.063
Bi	1.000	+/-	233.430
Th	1.000	+/-	302.044

mRFA -Ergebnisse

XL3t-69288

Reading No 14
Mode Mining
Time 2021-03-08 12:44
Duration 120.35
Units ppm
Sigma Value 2
Sequence Final
Flags 3mm
INV NR Gm1807
OBJEKT TAFELGEMAELEN
MATERIAL HOLZ METALL FASSUNG
ANALYSESTELLE P4 HINTERGRUND RELIEF
MESSAUFBAU STATIV
FILTER m30lo30hi30li30
User Login Raquet



Ele	ppm	+/-	$\pm 2\sigma$
Mg	1.000	+/-	14038.189
Al	4728.132	+/-	1113.824
Bal	767621.813	+/-	1967.470
Si	17986.279	+/-	743.587
P	1.000	+/-	115.733
S	7320.912	+/-	127.862
Cl	3362.687	+/-	85.123
K	2051.050	+/-	244.351
Ca	192500.766	+/-	1785.188
Ti	472.820	+/-	134.734
V	1.000	+/-	36.209
Cr	1.000	+/-	36.820
Mn	1.000	+/-	107.572
Fe	3001.049	+/-	162.854
Co	1.000	+/-	51.858
Ni	1.000	+/-	36.680
Cu	1.000	+/-	29.608
Zn	60.598	+/-	14.002
As	1.000	+/-	14.307
Se	1.000	+/-	3.070
Rb	1.000	+/-	4.483
Sr	416.960	+/-	12.222
Y	1.000	+/-	2.081
Zr	1.000	+/-	8.823
Nb	1.000	+/-	2.904
Ag	386.116	+/-	24.399
Cd	1.000	+/-	12.870
Sn	1.000	+/-	24.370
Sb	1.000	+/-	33.603
Ba	1.000	+/-	95.394
La	1.000	+/-	90.320
Ce	1.000	+/-	110.535
Au	1.000	+/-	15.105
Hg	13.800	+/-	4.496
Pb	77.041	+/-	11.226
Bi	1.000	+/-	94.240
Th	1.000	+/-	121.685

mRFA -Ergebnisse

XL3t-69288

Reading No 15
Mode Mining
Time 2021-03-08 12:48
Duration 120.43
Units ppm
Sigma Value 2
Sequence Final
Flags
INV NR Gm1807
OBJEKT TAFELGEMAELEN
MATERIAL HOLZ METALL FASSUNG
ANALYSESTELLE P5 ROTLACK
MESSAUFBAU STATIV
FILTER m30lo30hi30li30
User Login Raquet

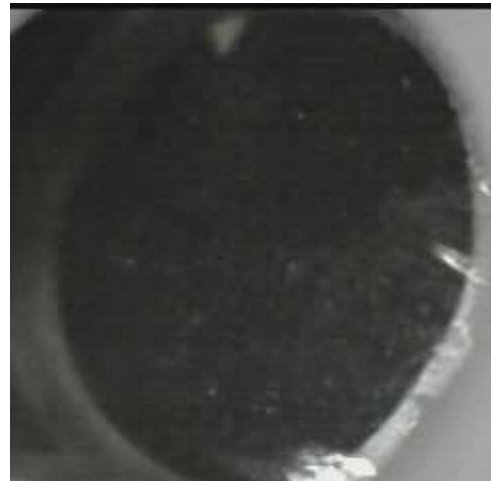


Ele	ppm	+/-	$\pm 2\sigma$
Mg	1.000	+/-	4647.358
Al	1448.185	+/-	462.416
Bal	921232.125	+/-	497.421
Si	4565.490	+/-	278.852
P	433.300	+/-	87.660
S	13057.997	+/-	187.470
Cl	1078.726	+/-	31.747
K	3044.466	+/-	145.652
Ca	35433.723	+/-	470.728
Ti	1.000	+/-	85.385
V	1.000	+/-	16.369
Cr	1.000	+/-	19.091
Mn	1.000	+/-	54.721
Fe	265.429	+/-	44.544
Co	1.000	+/-	19.489
Ni	1.000	+/-	24.439
Cu	1303.658	+/-	39.677
Zn	74.045	+/-	9.408
As	4109.895	+/-	101.661
Se	1.000	+/-	12.413
Rb	1.000	+/-	21.498
Sr	298.175	+/-	7.158
Y	1.000	+/-	8.453
Zr	1.000	+/-	36.106
Nb	18.090	+/-	10.185
Ag	5.046	+/-	3.728
Cd	16.266	+/-	5.858
Sn	11.918	+/-	7.727
Sb	1.000	+/-	21.376
Ba	1.000	+/-	41.095
La	1.000	+/-	38.296
Ce	-339.000	+/-	83.424
Au	1.000	+/-	13.592
Hg	1.000	+/-	7.494
Pb	13603.469	+/-	174.356
Bi	1.000	+/-	462.453
Th	1.000	+/-	522.707

mRFA -Ergebnisse

XL3t-69288

Reading No 16
Mode Mining
Time 2021-03-08 12:53
Duration 120.62
Units ppm
Sigma Value 2
Sequence Final
Flags
INV NR Gm1807
OBJEKT TAFELGEMAELEN
MATERIAL HOLZ METALL FASSUNG
ANALYSESTELLE P6 SCHWARZ
MESSAUFBAU STATIV
FILTER m30lo30hi30li30
User Login Raquet



Ele	ppm	+/-	$\pm 2\sigma$
Mg	1.000	+/-	3535.757
Al	380.641	+/-	358.730
Bal	925436.125	+/-	415.206
Si	4482.080	+/-	245.809
P	262.778	+/-	76.422
S	13192.456	+/-	159.239
Cl	1456.477	+/-	31.069
K	1488.633	+/-	104.999
Ca	39609.809	+/-	439.657
Ti	1.000	+/-	66.366
V	1.000	+/-	16.060
Cr	1.000	+/-	21.878
Mn	1.000	+/-	46.053
Fe	614.021	+/-	47.899
Co	1.000	+/-	18.024
Ni	1.000	+/-	20.301
Cu	1354.972	+/-	35.837
Zn	54.979	+/-	7.917
As	2783.919	+/-	70.424
Se	1.000	+/-	6.761
Rb	1.000	+/-	17.040
Sr	108.820	+/-	3.661
Y	1.000	+/-	5.740
Zr	1.000	+/-	25.718
Nb	15.972	+/-	7.184
Ag	6.245	+/-	2.999
Cd	12.533	+/-	4.549
Sn	9.800	+/-	6.036
Sb	1.000	+/-	10.697
Ba	1.000	+/-	31.168
La	1.000	+/-	28.968
Ce	-339.000	+/-	63.363
Au	1.000	+/-	9.368
Hg	1.000	+/-	5.094
Pb	8729.747	+/-	100.087
Bi	1.000	+/-	308.067
Th	1.000	+/-	377.138

mRFA -Ergebnisse

XL3t-69288

Reading No 17
Mode Mining
Time 2021-03-08 12:57
Duration 121.20
Units ppm
Sigma Value 2
Sequence Final
Flags
INV NR Gm1807
OBJEKT TAFELGEMAELEN
MATERIAL HOLZ METALL FASSUNG
ANALYSESTELLE P7 HAARE
MESSAUFBAU STATIV
FILTER m30lo30hi30li30
User Login Raquet

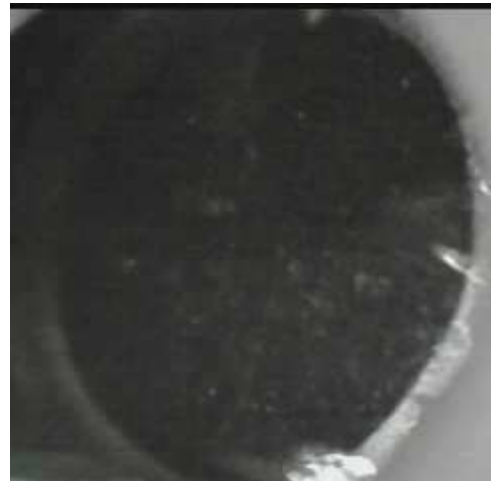


Ele	ppm	+/-	$\pm 2\sigma$
Mg	1.000	+/-	4895.971
Al	989.923	+/-	425.782
Bal	887507.938	+/-	533.024
Si	11941.703	+/-	380.581
P	1.000	+/-	63.389
S	5882.063	+/-	74.027
Cl	610.112	+/-	22.288
K	3311.806	+/-	151.482
Ca	72875.133	+/-	539.531
Ti	762.351	+/-	119.732
V	24.672	+/-	21.058
Cr	54.281	+/-	19.157
Mn	1.000	+/-	42.622
Fe	12467.155	+/-	166.134
Co	1.000	+/-	43.340
Ni	1.000	+/-	18.278
Cu	142.140	+/-	13.209
Zn	28.915	+/-	6.116
As	762.783	+/-	32.116
Se	1.000	+/-	3.584
Rb	1.000	+/-	7.115
Sr	159.071	+/-	3.698
Y	1.000	+/-	2.529
Zr	1.000	+/-	12.699
Nb	6.818	+/-	3.575
Ag	7.234	+/-	2.714
Cd	17.089	+/-	4.166
Sn	13.154	+/-	5.419
Sb	1.000	+/-	12.100
Ba	1.000	+/-	27.276
La	1.000	+/-	25.349
Ce	-339.000	+/-	55.187
Au	1.000	+/-	5.531
Hg	1.000	+/-	3.306
Pb	2435.623	+/-	30.953
Bi	1.000	+/-	156.732
Th	1.000	+/-	182.781

mRFA -Ergebnisse

XL3t-69288

Reading No 18
Mode Mining
Time 2021-03-08 13:01
Duration 121.39
Units ppm
Sigma Value 2
Sequence Final
Flags
INV NR Gm1807
OBJEKT TAFELGEMAELEN
MATERIAL HOLZ METALL FASSUNG
ANALYSESTELLE P8 SCHUH
MESSAUFBAU STATIV
FILTER m30lo30hi30li30
User Login Raquet



Ele	ppm	+/-	$\pm 2\sigma$
Mg	1.000	+/-	4950.930
Al	1580.301	+/-	488.926
Bal	889741.125	+/-	554.840
Si	7474.324	+/-	336.775
P	736.679	+/-	88.495
S	9343.596	+/-	112.788
Cl	878.592	+/-	26.987
K	1472.641	+/-	116.257
Ca	75693.047	+/-	650.663
Ti	249.320	+/-	196.718
V	1.000	+/-	47.674
Cr	130.824	+/-	20.201
Mn	1.000	+/-	52.144
Fe	3597.463	+/-	93.147
Co	251.466	+/-	36.652
Ni	1.000	+/-	20.063
Cu	827.562	+/-	26.556
Zn	311.109	+/-	13.828
As	1788.369	+/-	52.824
Se	1.000	+/-	5.537
Rb	1.000	+/-	11.296
Sr	145.193	+/-	3.865
Y	1.000	+/-	4.315
Zr	1.000	+/-	19.657
Nb	13.246	+/-	5.511
Ag	5.760	+/-	2.901
Cd	16.094	+/-	4.518
Sn	11.478	+/-	5.894
Sb	1.000	+/-	12.227
Ba	1.000	+/-	30.274
La	1.000	+/-	27.838
Ce	-339.000	+/-	61.000
Au	1.000	+/-	7.491
Hg	1.000	+/-	4.158
Pb	5731.820	+/-	63.988
Bi	1.000	+/-	265.272
Th	1.000	+/-	291.592