

mRFA -Ergebnisse

XL3t-69288

Reading No 1
Mode Mining
Time 2021-03-08 11:40
Duration 120.33
Units ppm
Sigma Value 2
Sequence Final
Flags
INV NR Gm1806
OBJEKT TAFELGEMAELEN
MATERIAL HOLZ METALL FASSUNG
ANALYSESTELLE P1 HINTERGRUND
MESSAUFBAU STATIV
FILTER m30lo30hi30li30
User Login Raquet



Ele	ppm	+/-	$\pm 2\sigma$
Mg	1.000	+/-	12906.159
Al	13590.100	+/-	1719.023
Bal	687335.063	+/-	1505.335
Si	40648.195	+/-	1077.025
P	39358.828	+/-	473.641
S	13083.012	+/-	162.783
Cl	1.000	+/-	37.237
K	3513.483	+/-	192.821
Ca	189674.109	+/-	1098.771
Ti	923.372	+/-	158.938
V	1.000	+/-	43.171
Cr	123.790	+/-	25.531
Mn	1.000	+/-	60.730
Fe	7366.598	+/-	142.311
Co	1.000	+/-	42.366
Ni	1.000	+/-	24.579
Cu	30.744	+/-	13.366
Zn	96.807	+/-	14.485
As	1.000	+/-	6.466
Se	1.000	+/-	6.502
Rb	20.049	+/-	5.064
Sr	552.479	+/-	8.550
Y	1.000	+/-	2.409
Zr	1.000	+/-	6.865
Nb	1.000	+/-	1.871
Ag	15.436	+/-	4.753
Cd	6.588	+/-	6.468
Sn	14.300	+/-	9.043
Sb	1.000	+/-	17.715
Ba	1.000	+/-	47.319
La	1.000	+/-	44.055
Ce	-339.000	+/-	95.700
Au	3597.976	+/-	56.978
Hg	8.444	+/-	5.337
Pb	40.667	+/-	5.669
Bi	1.000	+/-	77.722
Th	1.000	+/-	97.821

mRFA -Ergebnisse

XL3t-69288

Reading No 2
Mode Mining
Time 2021-03-08 11:44
Duration 121.98
Units ppm
Sigma Value 2
Sequence Final
Flags
INV NR Gm1806
OBJEKT TAFELGEMAELEN
MATERIAL HOLZ METALL FASSUNG
ANALYSESTELLE P2 RAHMEN FASSUNG
MESSAUFBAU STATIV
FILTER m30lo30hi30li30
User Login Raquet

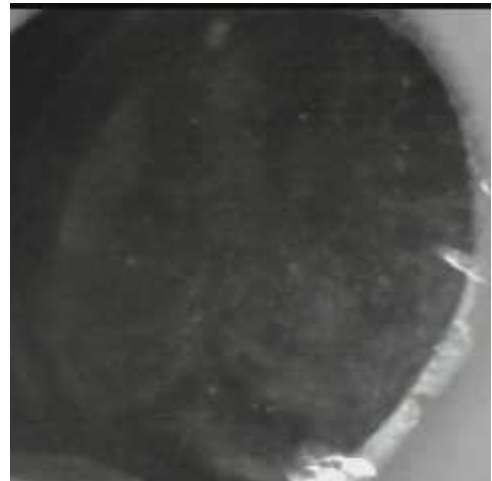


Ele	ppm	+/-	$\pm 2\sigma$
Mg	7746.704	+/-	7186.158
Al	3259.817	+/-	750.399
Bal	832828.500	+/-	722.130
Si	16725.309	+/-	550.096
P	976.086	+/-	119.452
S	10967.230	+/-	118.337
Cl	1192.551	+/-	33.968
K	2220.085	+/-	136.831
Ca	122278.297	+/-	675.382
Ti	126.731	+/-	110.144
V	1.000	+/-	21.004
Cr	1.000	+/-	19.046
Mn	1.000	+/-	40.813
Fe	621.918	+/-	41.110
Co	1.000	+/-	14.578
Ni	1.000	+/-	16.322
Cu	157.535	+/-	12.782
Zn	22.758	+/-	5.857
As	40.433	+/-	13.468
Se	1.000	+/-	2.011
Rb	4.682	+/-	2.893
Sr	108.718	+/-	2.817
Y	4.401	+/-	1.865
Zr	7.143	+/-	6.550
Nb	12.858	+/-	2.258
Ag	6.016	+/-	2.599
Cd	18.848	+/-	4.107
Sn	10.221	+/-	5.181
Sb	1.000	+/-	10.166
Ba	1.000	+/-	26.131
La	1.000	+/-	24.003
Ce	-339.000	+/-	52.186
Au	114.341	+/-	8.626
Hg	4.820	+/-	2.108
Pb	543.971	+/-	12.250
Bi	1.000	+/-	82.576
Th	1.000	+/-	91.113

mRFA -Ergebnisse

XL3t-69288

Reading No 3
Mode Mining
Time 2021-03-08 11:48
Duration 120.19
Units ppm
Sigma Value 2
Sequence Final
Flags
INV NR Gm1806
OBJEKT TAFELGEMAELEN
MATERIAL HOLZ METALL FASSUNG
ANALYSESTELLE P3 SOLDAT
MESSAUFBAU STATIV
FILTER m30lo30hi30li30
User Login Raquet



Ele	ppm	+/-	$\pm 2\sigma$
Mg	1.000	+/-	7476.158
Al	14087.766	+/-	1221.764
Bal	773414.000	+/-	977.437
Si	47532.113	+/-	913.761
P	1.000	+/-	170.346
S	12021.354	+/-	131.480
Cl	983.616	+/-	36.614
K	3476.365	+/-	209.342
Ca	140697.109	+/-	765.077
Ti	723.289	+/-	119.812
V	25.158	+/-	20.798
Cr	26.309	+/-	17.571
Mn	1.000	+/-	41.555
Fe	5827.984	+/-	106.182
Co	1.000	+/-	31.180
Ni	1.000	+/-	17.987
Cu	53.678	+/-	10.868
Zn	19.617	+/-	5.774
As	51.815	+/-	12.025
Se	1.000	+/-	1.693
Rb	1.000	+/-	3.711
Sr	190.184	+/-	3.874
Y	1.000	+/-	2.136
Zr	1.000	+/-	6.220
Nb	5.641	+/-	2.162
Ag	462.345	+/-	10.946
Cd	17.443	+/-	4.552
Sn	1.000	+/-	8.544
Sb	1.000	+/-	17.148
Ba	1.000	+/-	29.572
La	1.000	+/-	27.395
Ce	-339.000	+/-	59.649
Au	1.000	+/-	3.941
Hg	12.645	+/-	2.366
Pb	371.604	+/-	10.597
Bi	1.000	+/-	76.398
Th	1.000	+/-	85.287

mRFA -Ergebnisse

XL3t-69288

Reading No 4
Mode Mining
Time 2021-03-08 11:52
Duration 120.59
Units ppm
Sigma Value 2
Sequence Final
Flags
INV NR Gm1806
OBJEKT TAFELGEMAEDELDE
MATERIAL HOLZ METALL FASSUNG
ANALYSESTELLE P4 SOLDAT 2
MESSAUFBAU STATIV
FILTER m30lo30hi30li30
User Login Raquet

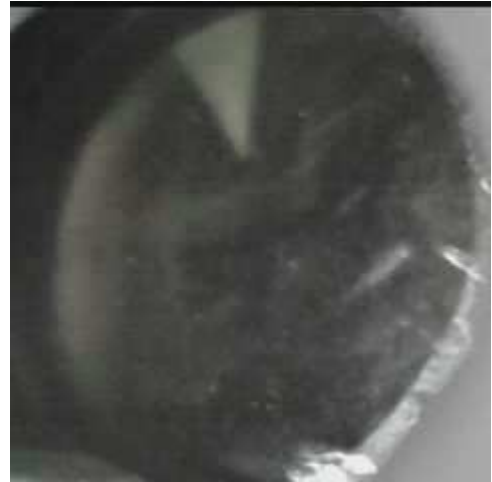


Ele	ppm	+/-	$\pm 2\sigma$
Mg	1.000	+/-	11375.688
Al	5167.617	+/-	977.951
Bal	798530.750	+/-	879.049
Si	22854.479	+/-	684.525
P	1.000	+/-	121.846
S	12875.869	+/-	138.906
Cl	1574.511	+/-	43.467
K	1406.851	+/-	182.650
Ca	153889.016	+/-	815.463
Ti	301.028	+/-	89.828
V	1.000	+/-	23.656
Cr	1.000	+/-	19.361
Mn	1.000	+/-	42.114
Fe	2145.390	+/-	67.906
Co	1.000	+/-	21.590
Ni	1.000	+/-	17.610
Cu	1.000	+/-	14.837
Zn	7.582	+/-	5.475
As	1.000	+/-	10.381
Se	1.000	+/-	1.773
Rb	3.585	+/-	2.745
Sr	170.673	+/-	3.713
Y	7.806	+/-	1.878
Zr	1.000	+/-	7.032
Nb	7.530	+/-	2.231
Ag	605.314	+/-	12.948
Cd	20.100	+/-	4.760
Sn	1.000	+/-	7.186
Sb	1.000	+/-	10.477
Ba	1.000	+/-	30.165
La	1.000	+/-	27.955
Ce	-339.000	+/-	60.829
Au	6.715	+/-	4.999
Hg	36.327	+/-	2.840
Pb	388.881	+/-	10.945
Bi	1.000	+/-	68.150
Th	1.000	+/-	86.995

mRFA -Ergebnisse

XL3t-69288

Reading No 5
Mode Mining
Time 2021-03-08 11:55
Duration 120.18
Units ppm
Sigma Value 2
Sequence Final
Flags
INV NR Gm1806
OBJEKT TAFELGEMAELEN
MATERIAL HOLZ METALL FASSUNG
ANALYSESTELLE P5 SCHWARZZEICHNUNG
MESSAUFBAU STATIV
FILTER m30lo30hi30li30
User Login Raquet

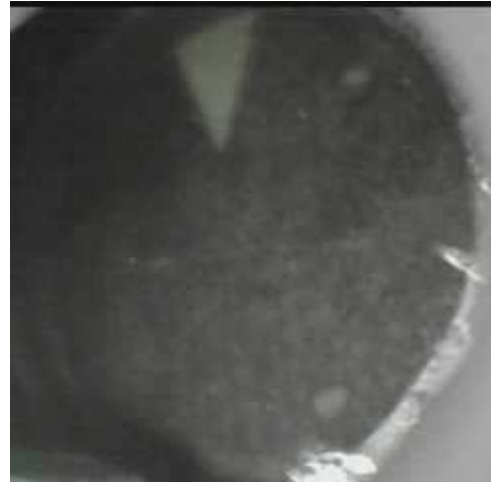


Ele	ppm	+/-	$\pm 2\sigma$
Mg	1.000	+/-	8139.781
Al	8057.679	+/-	1013.830
Bal	814616.500	+/-	967.264
Si	36055.625	+/-	847.642
P	499.427	+/-	142.412
S	20608.379	+/-	232.522
Cl	2115.426	+/-	49.888
K	3879.583	+/-	208.460
Ca	97671.250	+/-	880.203
Ti	487.834	+/-	117.661
V	1.000	+/-	30.317
Cr	1.000	+/-	30.424
Mn	1.000	+/-	52.962
Fe	5256.032	+/-	123.598
Co	1.000	+/-	35.393
Ni	1.000	+/-	23.604
Cu	1329.823	+/-	36.837
Zn	89.816	+/-	9.829
As	1885.311	+/-	60.694
Se	1.000	+/-	9.344
Rb	1.000	+/-	10.246
Sr	296.909	+/-	6.161
Y	1.000	+/-	5.064
Zr	1.000	+/-	23.988
Nb	11.539	+/-	6.254
Ag	661.056	+/-	15.115
Cd	15.429	+/-	5.524
Sn	1.000	+/-	8.860
Sb	1.000	+/-	20.669
Ba	1.000	+/-	37.903
La	1.000	+/-	35.029
Ce	-339.000	+/-	76.403
Au	1.000	+/-	9.041
Hg	1.000	+/-	5.298
Pb	6462.361	+/-	77.577
Bi	1.000	+/-	359.621
Th	1.000	+/-	332.826

mRFA -Ergebnisse

XL3t-69288

Reading No 6
Mode Mining
Time 2021-03-08 11:59
Duration 120.40
Units ppm
Sigma Value 2
Sequence Final
Flags
INV NR Gm1806
OBJEKT TAFELGEMAELEN
MATERIAL HOLZ METALL FASSUNG
ANALYSESTELLE P6 FELS
MESSAUFBAU STATIV
FILTER m30lo30hi30li30
User Login Raquet



Ele	ppm	+/-	$\pm 2\sigma$
Mg	24919.393	+/-	8585.555
Al	10371.390	+/-	1042.516
Bal	779227.813	+/-	1384.656
Si	51691.223	+/-	1009.137
P	1697.465	+/-	147.045
S	23815.730	+/-	313.590
Cl	2749.428	+/-	55.273
K	3718.273	+/-	177.742
Ca	60124.059	+/-	728.952
Ti	419.077	+/-	122.850
V	1.000	+/-	34.689
Cr	1.000	+/-	29.719
Mn	1.000	+/-	89.562
Fe	8578.498	+/-	186.986
Co	1.000	+/-	49.592
Ni	1.000	+/-	27.703
Cu	12009.095	+/-	191.759
Zn	375.389	+/-	22.456
As	4347.432	+/-	116.377
Se	1.000	+/-	13.136
Rb	1.000	+/-	20.734
Sr	312.399	+/-	8.027
Y	1.000	+/-	9.892
Zr	1.000	+/-	41.634
Nb	20.970	+/-	11.710
Ag	5.795	+/-	3.890
Cd	14.692	+/-	6.016
Sn	35.446	+/-	8.584
Sb	45.011	+/-	15.910
Ba	1.000	+/-	43.084
La	1.000	+/-	40.338
Ce	-339.000	+/-	88.027
Au	1.000	+/-	17.022
Hg	1.000	+/-	11.361
Pb	15521.472	+/-	210.758
Bi	1.000	+/-	611.168
Th	1.000	+/-	604.239

mRFA -Ergebnisse

XL3t-69288

Reading No 7
Mode Mining
Time 2021-03-08 12:04
Duration 121.28
Units ppm
Sigma Value 2
Sequence Final
Flags
INV NR Gm1806
OBJEKT TAFELGEMAELEN
MATERIAL HOLZ METALL FASSUNG
ANALYSESTELLE P7 BRAUNER KIT
MESSAUFBAU STATIV
FILTER m30lo30hi30li30
User Login Raquet



Ele	ppm	+/-	$\pm 2\sigma$
Mg	1.000	+/-	2606.669
Al	1352.586	+/-	327.339
Bal	960499.438	+/-	196.099
Si	8279.116	+/-	298.494
P	3651.109	+/-	94.087
S	4250.818	+/-	54.951
Cl	428.385	+/-	18.871
K	3214.119	+/-	128.282
Ca	17624.053	+/-	183.932
Ti	72.060	+/-	68.922
V	1.000	+/-	13.779
Cr	1.000	+/-	16.507
Mn	51.349	+/-	43.047
Fe	201.327	+/-	31.692
Co	1.000	+/-	11.947
Ni	1.000	+/-	15.354
Cu	10.746	+/-	8.759
Zn	34.318	+/-	5.761
As	1.000	+/-	6.519
Se	1.000	+/-	1.261
Rb	3.728	+/-	2.155
Sr	22.981	+/-	1.426
Y	10.848	+/-	1.555
Zr	12.297	+/-	4.849
Nb	12.794	+/-	1.916
Ag	8.112	+/-	2.533
Cd	16.338	+/-	3.817
Sn	12.803	+/-	4.940
Sb	1.000	+/-	12.305
Ba	1.000	+/-	24.189
La	1.000	+/-	22.367
Ce	-339.000	+/-	48.889
Au	1.000	+/-	2.703
Hg	9.033	+/-	1.374
Pb	221.596	+/-	7.490
Bi	1.000	+/-	62.695
Th	1.000	+/-	66.825

mRFA -Ergebnisse

XL3t-69288

Reading No 8
Mode Mining
Time 2021-03-08 12:08
Duration 120.17
Units ppm
Sigma Value 2
Sequence Final
Flags
INV NR Gm1806
OBJEKT TAFELGEMAELEN
MATERIAL HOLZ METALL FASSUNG
ANALYSESTELLE P8 WEISSER KIT
MESSAUFBAU STATIV
FILTER m30lo30hi30li30
User Login Raquet



Ele	ppm	+/-	$\pm 2\sigma$
Mg	1.000	+/-	15041.597
Al	1.000	+/-	2069.809
Bal	667249.813	+/-	1488.805
Si	5343.472	+/-	476.222
P	1.000	+/-	124.106
S	8045.251	+/-	122.211
Cl	321.249	+/-	32.910
K	376.114	+/-	162.847
Ca	317730.344	+/-	1597.494
Ti	1.000	+/-	111.392
V	1.000	+/-	22.008
Cr	1.000	+/-	25.497
Mn	1.000	+/-	57.384
Fe	169.421	+/-	38.663
Co	1.000	+/-	16.913
Ni	1.000	+/-	25.357
Cu	1.000	+/-	13.306
Zn	32.947	+/-	7.458
As	1.000	+/-	4.577
Se	1.000	+/-	1.650
Rb	1.000	+/-	2.131
Sr	666.695	+/-	9.292
Y	6.783	+/-	1.709
Zr	1.000	+/-	5.078
Nb	1.000	+/-	1.506
Ag	1.000	+/-	4.209
Cd	7.519	+/-	6.546
Sn	14.781	+/-	9.051
Sb	1.000	+/-	16.283
Ba	1.000	+/-	47.637
La	1.000	+/-	44.565
Ce	-339.000	+/-	96.842
Au	1.000	+/-	4.235
Hg	3.253	+/-	1.746
Pb	32.379	+/-	4.781
Bi	1.000	+/-	51.081
Th	1.000	+/-	66.561

mRFA -Ergebnisse

XL3t-69288

Reading No 9
Mode Mining
Time 2021-03-08 12:16
Duration 121.98
Units ppm
Sigma Value 2
Sequence Final
Flags
INV NR Gm1806
OBJEKT TAFELGEMAELENDE
MATERIAL HOLZ METALL FASSUNG
ANALYSESTELLE P9 ROTLACK
MESSAUFBAU STATIV
FILTER m30lo30hi30li30
User Login Raquet

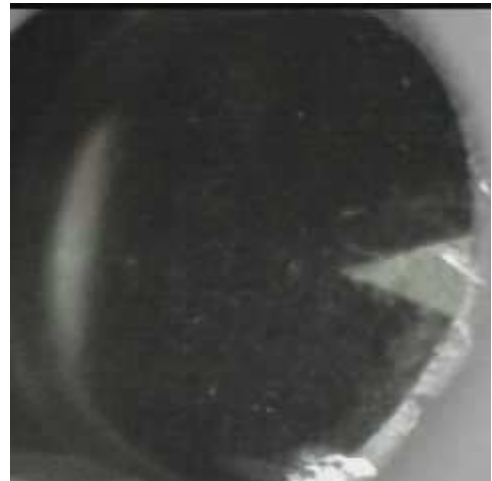


Ele	ppm	+/-	$\pm 2\sigma$
Mg	1.000	+/-	6281.420
Al	5250.038	+/-	603.635
Bal	905604.500	+/-	635.187
Si	5806.795	+/-	306.097
P	875.441	+/-	103.584
S	20369.828	+/-	286.088
Cl	1077.457	+/-	31.877
K	6361.341	+/-	199.573
Ca	20950.141	+/-	316.840
Ti	1.000	+/-	138.139
V	1.000	+/-	30.291
Cr	1.000	+/-	20.733
Mn	1.000	+/-	55.129
Fe	593.599	+/-	54.662
Co	1.000	+/-	22.374
Ni	1.000	+/-	26.105
Cu	10073.198	+/-	163.129
Zn	52.273	+/-	14.019
As	4948.141	+/-	124.115
Se	1.000	+/-	10.023
Rb	1.000	+/-	27.038
Sr	149.597	+/-	5.529
Y	1.000	+/-	10.637
Zr	1.000	+/-	44.697
Nb	24.713	+/-	12.737
Ag	41.145	+/-	5.465
Cd	11.026	+/-	6.127
Sn	1.000	+/-	11.744
Sb	21.176	+/-	16.051
Ba	1.000	+/-	44.591
La	1.000	+/-	41.568
Ce	-339.000	+/-	90.481
Au	1.000	+/-	15.817
Hg	1.000	+/-	8.846
Pb	17789.588	+/-	238.514
Bi	1.000	+/-	522.339
Th	1.000	+/-	640.275

mRFA -Ergebnisse

XL3t-69288

Reading No 10
Mode Mining
Time 2021-03-08 12:21
Duration 120.96
Units ppm
Sigma Value 2
Sequence Final
Flags
INV NR Gm1806
OBJEKT TAFELGEMAELEN
MATERIAL HOLZ METALL FASSUNG
ANALYSESTELLE P10 SCHUH
MESSAUFBAU STATIV
FILTER m30lo30hi30li30
User Login Raquet



Ele	ppm	+/-	$\pm 2\sigma$
Mg	1.000	+/-	4562.673
Al	766.515	+/-	461.220
Bal	895530.500	+/-	536.521
Si	4661.019	+/-	280.466
P	1.000	+/-	78.511
S	10092.979	+/-	120.029
Cl	1238.627	+/-	30.989
K	1920.763	+/-	120.589
Ca	73270.430	+/-	641.269
Ti	1.000	+/-	90.086
V	1.000	+/-	16.354
Cr	1.000	+/-	16.530
Mn	1.000	+/-	44.610
Fe	543.462	+/-	44.138
Co	1.000	+/-	16.677
Ni	1.000	+/-	19.796
Cu	4679.966	+/-	71.424
Zn	15.394	+/-	8.706
As	1637.300	+/-	51.726
Se	1.000	+/-	5.760
Rb	1.000	+/-	10.065
Sr	155.144	+/-	4.039
Y	1.000	+/-	4.230
Zr	1.000	+/-	19.687
Nb	13.617	+/-	5.432
Ag	5.321	+/-	3.036
Cd	11.522	+/-	4.633
Sn	12.869	+/-	6.237
Sb	16.002	+/-	11.833
Ba	1.000	+/-	31.740
La	1.000	+/-	29.499
Ce	-339.000	+/-	64.068
Au	1.000	+/-	7.942
Hg	1.000	+/-	4.381
Pb	5428.699	+/-	62.115
Bi	1.000	+/-	281.903
Th	1.000	+/-	287.170