

## mRFA -Ergebnisse

XL3t-69288

Reading No 1  
Mode Mining  
Time 2020-01-29 15:15  
Duration 121.36  
Units ppm  
Sigma Value 2  
Sequence Final  
Flags 3mm  
INV NR KG1054  
OBJEKT KREUZ  
MATERIAL HOLZ METALL FASSUNG  
ANALYSESTELLE P1 HINTERGRUND  
MESSAUFBAU STATIV  
FILTER m30lo30hi30li30  
User Login Raquet



Ele	ppm	+/-	$\pm 2\sigma$
Ce	1.000	+/-	99.147
La	1.000	+/-	81.536
Ba	1.000	+/-	86.684
Sb	1.000	+/-	41.408
Sn	1.000	+/-	28.281
Cd	1.000	+/-	18.100
Ag	33.726	+/-	9.773
Bal	804478.625	+/-	1614.650
Nb	1.000	+/-	3.331
Zr	1.000	+/-	11.302
Y	1.000	+/-	2.337
Sr	218.511	+/-	8.277
Rb	15.177	+/-	7.813
Th	1.000	+/-	158.682
Bi	1.000	+/-	144.813
Au	3010.558	+/-	83.775
As	40.249	+/-	16.825
Se	1.000	+/-	9.511
Pb	211.415	+/-	16.484
Hg	1.000	+/-	8.295
Zn	104.054	+/-	22.294
Cu	130.903	+/-	24.250
Ni	1.000	+/-	33.260
Co	1.000	+/-	32.949
Fe	302.144	+/-	70.306
Mn	1.000	+/-	94.554
Cr	62.501	+/-	27.017
V	1.000	+/-	18.482
Ti	1.000	+/-	100.678
Ca	158531.156	+/-	1486.815
K	298.225	+/-	147.372
Al	2568.250	+/-	846.638
P	13664.623	+/-	276.064
Si	1.000	+/-	335.273
Cl	11302.816	+/-	154.192
S	5026.975	+/-	98.448
Mg	1.000	+/-	7473.645

mRFA -Ergebnisse

XL3t-69288

Reading No 2  
Mode Mining  
Time 2020-01-29 15:20  
Duration 121.86  
Units ppm  
Sigma Value 2  
Sequence Final  
Flags 3mm  
INV NR KG1054  
OBJEKT KREUZ  
MATERIAL HOLZ METALL FASSUNG  
ANALYSESTELLE P2 HINTERGRUND  
MESSAUFBAU STATIV  
FILTER m30lo30hi30li30  
User Login Raquet

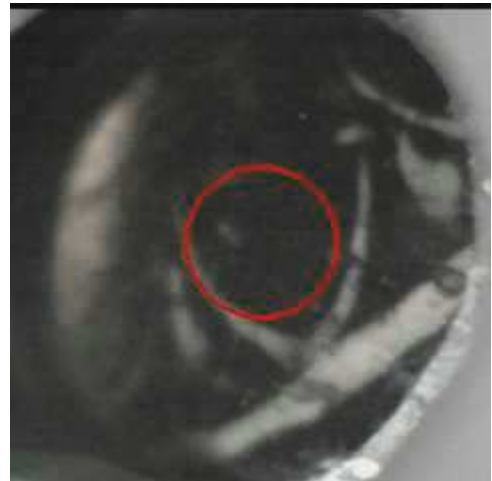


Ele	ppm	+/-	$\pm 2\sigma$
Ce	1.000	+/-	122.195
La	1.000	+/-	99.383
Ba	1.000	+/-	118.887
Sb	1.000	+/-	37.028
Sn	1.000	+/-	23.392
Cd	1.000	+/-	21.363
Ag	74.907	+/-	13.639
Bal	823840.188	+/-	1621.723
Nb	1.000	+/-	4.157
Zr	1.000	+/-	15.014
Y	1.000	+/-	2.889
Sr	241.697	+/-	9.745
Rb	37.082	+/-	12.203
Th	1.000	+/-	250.765
Bi	1.000	+/-	176.250
Au	7583.342	+/-	157.623
As	31.563	+/-	18.295
Se	1.000	+/-	16.035
Pb	189.788	+/-	17.996
Hg	1.000	+/-	12.549
Zn	200.394	+/-	34.522
Cu	154.830	+/-	28.060
Ni	1.000	+/-	40.485
Co	1.000	+/-	39.041
Fe	484.067	+/-	86.973
Mn	1.000	+/-	113.371
Cr	120.432	+/-	32.809
V	1.000	+/-	24.610
Ti	1.000	+/-	185.575
Ca	122107.008	+/-	1357.209
K	693.894	+/-	166.894
Al	2308.998	+/-	827.844
P	22143.047	+/-	378.339
Si	1.000	+/-	376.472
Cl	13124.755	+/-	187.241
S	6664.116	+/-	123.061
Mg	1.000	+/-	7484.087

mRFA -Ergebnisse

XL3t-69288

Reading No 3  
Mode Mining  
Time 2020-01-29 15:25  
Duration 120.09  
Units ppm  
Sigma Value 2  
Sequence Final  
Flags 3mm  
INV NR KG1054  
OBJEKT KREUZ  
MATERIAL HOLZ METALL FASSUNG  
ANALYSESTELLE P3 NIMBUS  
MESSAUFBAU STATIV  
FILTER m30lo30hi30li30  
User Login Raquet



Ele	ppm	+/-	$\pm 2\sigma$
Ce	1.000	+/-	198.573
La	1.000	+/-	161.400
Ba	393.608	+/-	177.306
Sb	115.942	+/-	62.204
Sn	1.000	+/-	33.228
Cd	1.000	+/-	19.332
Ag	1.000	+/-	13.708
Bal	796220.063	+/-	2324.263
Nb	1.000	+/-	18.221
Zr	1.000	+/-	70.942
Y	1.000	+/-	14.933
Sr	131.623	+/-	9.921
Rb	1.000	+/-	31.443
Th	1.000	+/-	986.741
Bi	1.000	+/-	1143.693
Au	1.000	+/-	34.611
As	2519.039	+/-	143.969
Se	1.000	+/-	20.027
Pb	7721.225	+/-	201.126
Hg	1.000	+/-	20.220
Zn	327.239	+/-	74.747
Cu	150230.859	+/-	2228.326
Ni	1.000	+/-	45.690
Co	1.000	+/-	50.733
Fe	2743.031	+/-	129.564
Mn	233.571	+/-	90.978
Cr	1.000	+/-	29.625
V	1.000	+/-	51.466
Ti	1.000	+/-	213.088
Ca	11268.874	+/-	263.451
K	910.796	+/-	147.295
Al	2861.974	+/-	808.448
P	292.411	+/-	77.277
Si	5595.220	+/-	389.677
Cl	14690.529	+/-	251.672
S	3743.968	+/-	92.316
Mg	1.000	+/-	8513.690

mRFA -Ergebnisse

XL3t-69288

Reading No 4  
Mode Mining  
Time 2020-01-29 15:29  
Duration 122.12  
Units ppm  
Sigma Value 2  
Sequence Final  
Flags 3mm  
INV NR KG1054  
OBJEKT KREUZ  
MATERIAL HOLZ METALL FASSUNG  
ANALYSESTELLE P4 BLUT  
MESSAUFBAU STATIV  
FILTER m30lo30hi30li30  
User Login Raquet



Ele	ppm	+/-	$\pm 2\sigma$
Ce	1.000	+/-	137.083
La	1.000	+/-	138.922
Ba	1.000	+/-	172.565
Sb	1.000	+/-	49.947
Sn	1.000	+/-	23.837
Cd	1.000	+/-	18.182
Ag	1.000	+/-	15.948
Bal	812290.813	+/-	1834.154
Nb	16.995	+/-	16.925
Zr	1.000	+/-	60.886
Y	1.000	+/-	14.729
Sr	169.873	+/-	11.636
Rb	1.000	+/-	28.773
Th	1.000	+/-	845.646
Bi	1.000	+/-	867.948
Au	1376.804	+/-	86.643
As	3502.744	+/-	153.809
Se	1.000	+/-	25.977
Pb	14717.195	+/-	296.936
Hg	2564.810	+/-	70.387
Zn	296.771	+/-	36.805
Cu	319.039	+/-	36.335
Ni	1.000	+/-	42.052
Co	1.000	+/-	53.190
Fe	518.375	+/-	94.182
Mn	1.000	+/-	125.685
Cr	1.000	+/-	48.477
V	1.000	+/-	29.547
Ti	1.000	+/-	151.842
Ca	125147.398	+/-	1968.189
K	474.296	+/-	164.955
Al	3098.246	+/-	919.036
P	5167.423	+/-	209.769
Si	2002.773	+/-	381.605
Cl	16519.014	+/-	301.694
S	11817.444	+/-	228.912
Mg	1.000	+/-	8909.695

mRFA -Ergebnisse

XL3t-69288

Reading No 5  
Mode Mining  
Time 2020-01-29 15:34  
Duration 120.16  
Units ppm  
Sigma Value 2  
Sequence Final  
Flags 3mm  
INV NR KG1054  
OBJEKT KREUZ  
MATERIAL HOLZ METALL FASSUNG  
ANALYSESTELLE P5 RAND  
MESSAUFBAU STATIV  
FILTER m30lo30hi30li30  
User Login Raquet



Ele	ppm	+/-	$\pm 2\sigma$
Ce	1.000	+/-	123.164
La	1.000	+/-	100.505
Ba	1.000	+/-	105.768
Sb	1.000	+/-	51.839
Sn	1.000	+/-	22.383
Cd	1.000	+/-	15.433
Ag	1.000	+/-	8.704
Bal	886813.563	+/-	1117.706
Nb	1.000	+/-	9.454
Zr	1.000	+/-	36.766
Y	1.000	+/-	8.638
Sr	203.981	+/-	9.195
Rb	1.000	+/-	17.272
Th	1.000	+/-	516.606
Bi	1.000	+/-	470.869
Au	225.564	+/-	32.921
As	1514.569	+/-	92.254
Se	1.000	+/-	15.467
Pb	5935.036	+/-	124.684
Hg	1.000	+/-	9.973
Zn	1.000	+/-	46.194
Cu	26663.363	+/-	459.918
Ni	1.000	+/-	39.508
Co	1.000	+/-	37.235
Fe	626.722	+/-	84.365
Mn	1.000	+/-	91.337
Cr	1.000	+/-	27.786
V	1.000	+/-	21.201
Ti	1.000	+/-	133.550
Ca	46881.531	+/-	720.560
K	2100.926	+/-	180.702
Al	2500.846	+/-	694.846
P	1.000	+/-	84.568
Si	1572.839	+/-	278.216
Cl	20425.363	+/-	315.102
S	4535.678	+/-	103.883
Mg	1.000	+/-	7044.595

mRFA -Ergebnisse

XL3t-69288

Reading No 6  
Mode Mining  
Time 2020-01-29 15:38  
Duration 120.19  
Units ppm  
Sigma Value 2  
Sequence Final  
Flags 3mm  
INV NR KG1054  
OBJEKT KREUZ  
MATERIAL HOLZ METALL FASSUNG  
ANALYSESTELLE P6 HINTERGRUND RS  
MESSAUFBAU STATIV  
FILTER m30lo30hi30li30  
User Login Raquet



Ele	ppm	+/-	$\pm 2\sigma$
Ce	1.000	+/-	107.981
La	1.000	+/-	87.567
Ba	1.000	+/-	93.556
Sb	1.000	+/-	40.760
Sn	1.000	+/-	22.390
Cd	1.000	+/-	12.453
Ag	15.874	+/-	9.140
Bal	786603.250	+/-	1775.980
Nb	1.000	+/-	3.691
Zr	1.000	+/-	13.162
Y	1.000	+/-	2.832
Sr	231.989	+/-	8.697
Rb	1.000	+/-	9.889
Th	1.000	+/-	185.120
Bi	1.000	+/-	164.543
Au	2861.394	+/-	83.080
As	113.246	+/-	25.465
Se	1.000	+/-	9.628
Pb	526.250	+/-	25.407
Hg	1.000	+/-	14.037
Zn	279.499	+/-	28.480
Cu	127.376	+/-	24.635
Ni	1.000	+/-	36.648
Co	1.000	+/-	36.337
Fe	612.522	+/-	86.149
Mn	1.000	+/-	100.797
Cr	51.403	+/-	26.299
V	1.000	+/-	24.859
Ti	1.000	+/-	145.147
Ca	156325.625	+/-	1516.584
K	462.011	+/-	153.076
Al	2311.540	+/-	984.176
P	7373.688	+/-	259.450
Si	4694.088	+/-	497.383
Cl	4694.918	+/-	97.976
S	32715.361	+/-	352.958
Mg	1.000	+/-	10660.135

## mRFA -Ergebnisse

XL3t-69288

Reading No 7  
Mode Mining  
Time 2020-01-29 15:42  
Duration 121.52  
Units ppm  
Sigma Value 2  
Sequence Final  
Flags 3mm  
INV NR KG1054  
OBJEKT KREUZ  
MATERIAL HOLZ METALL FASSUNG  
ANALYSESTELLE P7 HINTERGRUND RS  
MESSAUFBAU STATIV  
FILTER m30lo30hi30li30  
User Login Raquet

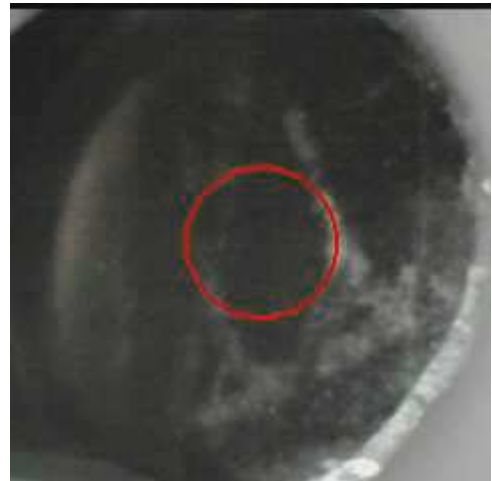


Ele	ppm	+/-	$\pm 2\sigma$
Ce	1.000	+/-	127.982
La	1.000	+/-	121.830
Ba	1.000	+/-	128.729
Sb	1.000	+/-	40.558
Sn	1.000	+/-	34.979
Cd	1.000	+/-	13.738
Ag	16.234	+/-	10.679
Bal	719756.188	+/-	2497.077
Nb	1.000	+/-	4.650
Zr	1.000	+/-	16.680
Y	1.000	+/-	3.755
Sr	321.762	+/-	11.775
Rb	13.419	+/-	9.699
Th	1.000	+/-	232.046
Bi	1.000	+/-	198.556
Au	2519.074	+/-	88.382
As	101.111	+/-	32.497
Se	1.000	+/-	10.531
Pb	717.108	+/-	33.694
Hg	1.000	+/-	8.842
Zn	245.656	+/-	30.472
Cu	106.387	+/-	26.842
Ni	1.000	+/-	42.581
Co	1.000	+/-	42.988
Fe	852.091	+/-	108.727
Mn	1.000	+/-	122.867
Cr	50.425	+/-	33.525
V	1.000	+/-	28.861
Ti	1.000	+/-	217.454
Ca	217634.875	+/-	2223.890
K	746.497	+/-	196.212
Al	2167.021	+/-	1202.140
P	7695.850	+/-	281.655
Si	5282.518	+/-	547.130
Cl	4414.204	+/-	99.853
S	37359.668	+/-	409.070
Mg	1.000	+/-	23051.994

mRFA -Ergebnisse

XL3t-69288

Reading No 8  
Mode Mining  
Time 2020-01-29 15:46  
Duration 121.53  
Units ppm  
Sigma Value 2  
Sequence Final  
Flags 3mm  
INV NR KG1054  
OBJEKT KREUZ  
MATERIAL HOLZ METALL FASSUNG  
ANALYSESTELLE P8 NIMBUS RS  
MESSAUFBAU STATIV  
FILTER m30lo30hi30li30  
User Login Raquet



Ele	ppm	+/-	$\pm 2\sigma$
Ce	1.000	+/-	169.805
La	1.000	+/-	148.611
Ba	306.380	+/-	144.843
Sb	67.731	+/-	50.337
Sn	1.000	+/-	28.590
Cd	1.000	+/-	17.989
Ag	1.000	+/-	14.787
Bal	786358.438	+/-	2279.242
Nb	1.000	+/-	15.140
Zr	1.000	+/-	59.173
Y	1.000	+/-	12.173
Sr	168.144	+/-	10.237
Rb	1.000	+/-	29.229
Th	1.000	+/-	825.878
Bi	1.000	+/-	906.588
Au	1.000	+/-	28.500
As	2434.801	+/-	126.654
Se	1.000	+/-	19.404
Pb	6531.857	+/-	163.884
Hg	1.000	+/-	16.590
Zn	66.907	+/-	63.996
Cu	121242.344	+/-	1769.287
Ni	1.000	+/-	43.223
Co	1.000	+/-	46.656
Fe	2169.422	+/-	119.909
Mn	1.000	+/-	141.058
Cr	1.000	+/-	28.108
V	1.000	+/-	43.486
Ti	1.000	+/-	296.404
Ca	28728.461	+/-	478.279
K	1091.180	+/-	149.155
Al	4121.976	+/-	893.328
P	761.392	+/-	128.017
Si	20474.207	+/-	701.557
Cl	6613.850	+/-	126.505
S	18862.852	+/-	297.350
Mg	1.000	+/-	8223.497



mRFA -Ergebnisse

XL3t-69288

Reading No 9  
Mode Mining  
Time 2020-01-29 15:51  
Duration 122.96  
Units ppm  
Sigma Value 2  
Sequence Final  
Flags 3mm  
INV NR KG1054  
OBJEKT KREUZ  
MATERIAL HOLZ METALL FASSUNG  
ANALYSESTELLE P9 NAGEL RS  
MESSAUFBAU STATIV  
FILTER m30lo30hi30li30  
User Login Raquet



Ele	ppm	+/-	$\pm 2\sigma$
Ce	837.101	+/-	391.855
La	524.880	+/-	313.599
Ba	449.336	+/-	321.654
Sb	1.000	+/-	160.547
Sn	1.000	+/-	57.853
Cd	1.000	+/-	29.156
Ag	1.000	+/-	22.541
Bal	729199.500	+/-	5097.151
Nb	160.003	+/-	89.869
Zr	1.000	+/-	267.871
Y	1.000	+/-	73.321
Sr	1.000	+/-	26.393
Rb	1.000	+/-	147.779
Th	1.000	+/-	3521.060
Bi	1.000	+/-	2812.019
Au	1.000	+/-	150.778
As	12527.918	+/-	569.233
Se	62.490	+/-	44.636
Pb	107007.266	+/-	2967.174
Hg	8300.038	+/-	260.025
Zn	403.341	+/-	74.224
Cu	46932.246	+/-	1102.824
Ni	189.892	+/-	73.198
Co	103.326	+/-	69.594
Fe	982.488	+/-	142.315
Mn	244.879	+/-	143.711
Cr	1.000	+/-	46.102
V	1.000	+/-	45.596
Ti	1.000	+/-	183.889
Ca	28997.033	+/-	761.370
K	1835.516	+/-	237.582
Al	4729.891	+/-	1281.540
P	4082.146	+/-	240.580
Si	11969.108	+/-	715.006
Cl	12061.247	+/-	340.252
S	28400.289	+/-	702.076
Mg	1.000	+/-	13011.759

mRFA -Ergebnisse

XL3t-69288

Reading No 10  
Mode Mining  
Time 2020-01-29 15:56  
Duration 120.27  
Units ppm  
Sigma Value 2  
Sequence Final  
Flags 3mm  
INV NR KG1054  
OBJEKT KREUZ  
MATERIAL HOLZ METALL FASSUNG  
ANALYSESTELLE P10 LENDENTUCH RS  
MESSAUFBAU STATIV  
FILTER m30lo30hi30li30  
User Login Raquet



Ele	ppm	+/-	$\pm 2\sigma$
Ce	297.606	+/-	243.142
La	1.000	+/-	264.876
Ba	290.163	+/-	206.290
Sb	1.000	+/-	113.624
Sn	1.000	+/-	40.304
Cd	1.000	+/-	22.900
Ag	1.000	+/-	13.490
Bal	783850.188	+/-	2768.040
Nb	1.000	+/-	62.815
Zr	1.000	+/-	134.851
Y	1.000	+/-	33.673
Sr	86.753	+/-	11.343
Rb	1.000	+/-	63.578
Th	1.000	+/-	1792.607
Bi	1.000	+/-	1871.586
Au	1.000	+/-	47.890
As	1992.129	+/-	268.468
Se	1.000	+/-	26.734
Pb	39147.398	+/-	947.224
Hg	1.000	+/-	28.744
Zn	1.000	+/-	64.252
Cu	110989.313	+/-	2061.581
Ni	1.000	+/-	52.384
Co	1.000	+/-	73.907
Fe	1530.914	+/-	116.990
Mn	1.000	+/-	155.207
Cr	1.000	+/-	33.082
V	1.000	+/-	41.814
Ti	1.000	+/-	300.590
Ca	12178.847	+/-	319.364
K	1588.926	+/-	180.842
Al	3574.366	+/-	899.604
P	573.347	+/-	105.596
Si	21348.498	+/-	813.606
Cl	14602.182	+/-	316.951
S	7949.413	+/-	188.683
Mg	1.000	+/-	8124.178

mRFA -Ergebnisse

XL3t-69288

Reading No 11  
Mode Mining  
Time 2020-01-29 16:05  
Duration 120.63  
Units ppm  
Sigma Value 2  
Sequence Final  
Flags 3mm  
INV NR KG1054  
OBJEKT KREUZ  
MATERIAL HOLZ METALL FASSUNG  
ANALYSESTELLE P11 KANTENFLAECHE  
MESSAUFBAU STATIV  
FILTER m30lo30hi30li30  
User Login Raquet



Ele	ppm	+/-	$\pm 2\sigma$
Ce	1.000	+/-	84.403
La	1.000	+/-	68.453
Ba	1.000	+/-	72.357
Sb	1.000	+/-	25.408
Sn	1.000	+/-	15.698
Cd	13.116	+/-	10.422
Ag	1.000	+/-	5.334
Bal	885068.188	+/-	984.351
Nb	18.170	+/-	9.633
Zr	1.000	+/-	41.114
Y	1.000	+/-	8.070
Sr	11.515	+/-	4.155
Rb	1.000	+/-	17.556
Th	1.000	+/-	485.385
Bi	1.000	+/-	496.843
Au	1.000	+/-	26.384
As	1982.778	+/-	88.091
Se	11.264	+/-	10.083
Pb	7372.436	+/-	131.861
Hg	753.108	+/-	27.484
Zn	233.921	+/-	22.351
Cu	96.414	+/-	20.538
Ni	1.000	+/-	30.882
Co	1.000	+/-	35.615
Fe	1425.490	+/-	106.244
Mn	235.841	+/-	97.792
Cr	1.000	+/-	31.429
V	1.000	+/-	36.660
Ti	1.000	+/-	267.427
Ca	32270.432	+/-	557.998
K	3581.394	+/-	201.154
Al	3182.683	+/-	687.343
P	6086.728	+/-	224.300
Si	18761.398	+/-	695.835
Cl	3857.354	+/-	91.478
S	35037.855	+/-	550.478
Mg	1.000	+/-	6267.995

## mRFA -Ergebnisse

XL3t-69288

Reading No 12  
Mode Mining  
Time 2020-01-29 16:09  
Duration 121.21  
Units ppm  
Sigma Value 2  
Sequence Final  
Flags 3mm  
INV NR KG1054  
OBJEKT KREUZ  
MATERIAL HOLZ METALL FASSUNG  
ANALYSESTELLE P12 KANTENFLAECHE KONTROLLMESSU  
MESSAUFBAU STATIV  
FILTER m30lo30hi30li30  
User Login Raquet



Ele	ppm	+/-	$\pm 2\sigma$
Ce	1.000	+/-	126.117
La	1.000	+/-	107.188
Ba	1.000	+/-	111.072
Sb	1.000	+/-	36.716
Sn	1.000	+/-	22.286
Cd	1.000	+/-	13.241
Ag	1.000	+/-	10.030
Bal	846463.188	+/-	1542.886
Nb	26.850	+/-	15.517
Zr	1.000	+/-	58.338
Y	1.000	+/-	13.382
Sr	1.000	+/-	8.206
Rb	1.000	+/-	25.464
Th	1.000	+/-	766.506
Bi	1.000	+/-	749.396
Au	1.000	+/-	42.657
As	3371.467	+/-	144.883
Se	22.908	+/-	16.363
Pb	12891.468	+/-	265.731
Hg	1461.997	+/-	49.439
Zn	334.762	+/-	32.727
Cu	224.685	+/-	31.583
Ni	1.000	+/-	41.702
Co	1.000	+/-	47.338
Fe	1318.564	+/-	125.401
Mn	390.817	+/-	127.036
Cr	1.000	+/-	37.044
V	1.000	+/-	38.498
Ti	1.000	+/-	274.991
Ca	31863.992	+/-	688.223
K	3815.478	+/-	258.549
Al	5826.847	+/-	1096.991
P	9277.128	+/-	338.532
Si	25747.037	+/-	992.854
Cl	6526.526	+/-	165.810
S	50436.270	+/-	961.690
Mg	1.000	+/-	17436.613

## mRFA -Ergebnisse

XL3t-69288

Reading No 13  
Mode Mining  
Time 2020-01-29 16:15  
Duration 120.28  
Units ppm  
Sigma Value 2  
Sequence Final  
Flags 3mm  
INV NR KG1054  
OBJEKT KREUZ  
MATERIAL HOLZ METALL FASSUNG  
ANALYSESTELLE P13 UEBERMALTER HOLZSTIFT  
MESSAUFBAU STATIV  
FILTER m30lo30hi30li30  
User Login Raquet



Ele	ppm	+/-	$\pm 2\sigma$
Ce	1670.334	+/-	485.525
La	828.232	+/-	373.508
Ba	1358.391	+/-	401.504
Sb	1.000	+/-	153.356
Sn	171.155	+/-	88.046
Cd	2685.688	+/-	196.779
Ag	1.000	+/-	31.699
Bal	593356.000	+/-	9696.086
Nb	321.868	+/-	163.566
Zr	1.000	+/-	445.952
Y	1.000	+/-	124.967
Sr	1.000	+/-	37.220
Rb	1.000	+/-	292.702
Th	1.000	+/-	8177.352
Bi	1.000	+/-	4481.733
Au	1.000	+/-	185.546
As	15177.602	+/-	853.699
Se	881.230	+/-	66.752
Pb	191617.578	+/-	6571.104
Hg	6594.973	+/-	270.882
Zn	1048.046	+/-	89.743
Cu	650.641	+/-	77.838
Ni	259.120	+/-	101.119
Co	1.000	+/-	195.590
Fe	20399.652	+/-	822.117
Mn	3710.410	+/-	380.457
Cr	182.494	+/-	89.214
V	1.000	+/-	276.083
Ti	1.000	+/-	1341.990
Ca	55441.285	+/-	1762.566
K	14183.381	+/-	860.669
Al	12186.760	+/-	2557.186
P	4879.590	+/-	305.531
Si	36332.129	+/-	1612.194
Cl	3698.800	+/-	178.878
S	32364.646	+/-	1122.625
Mg	1.000	+/-	20286.912