

mRFA -Ergebnisse

XL3t-69288

Reading No 1  
Mode Mining  
Time 2020-07-15 10:29  
Duration 120.57  
Units ppm  
Sigma Value 2  
Sequence Final  
Flags  
INV NR Gm1171  
OBJEKT TAFELGEMAELEN  
MATERIAL HOLZ METALL FASSUNG  
ANALYSESTELLE P1 NIMBUS MARIA  
MESSAUFBAU STATIV  
FILTER m30lo30hi30li30  
User Login Raquet



Ele	ppm	+/-	$\pm 2\sigma$
Ce	-339.000	+/-	123.500
La	1.000	+/-	56.276
Ba	1.000	+/-	60.148
Sb	1.000	+/-	19.858
Sn	1828.292	+/-	43.218
Cd	23.844	+/-	8.716
Ag	653.269	+/-	20.669
Bal	863631.563	+/-	1147.866
Nb	60.788	+/-	22.743
Zr	1.000	+/-	75.440
Y	1.000	+/-	19.505
Sr	89.146	+/-	7.066
Rb	1.000	+/-	38.246
Th	1.000	+/-	1056.896
Bi	1.000	+/-	1041.443
Au	451.163	+/-	46.410
As	7208.939	+/-	207.066
Se	27.405	+/-	19.575
Pb	35319.234	+/-	567.726
Hg	209.613	+/-	24.867
Zn	200.527	+/-	18.889
Cu	289.816	+/-	26.635
Ni	1.000	+/-	36.326
Co	1.000	+/-	58.584
Fe	7121.360	+/-	208.376
Mn	1.000	+/-	69.215
Cr	67.301	+/-	22.006
V	1.000	+/-	25.517
Ti	1.000	+/-	165.842
Ca	43948.785	+/-	723.020
K	1695.425	+/-	203.161
Al	2169.955	+/-	722.461
P	7794.899	+/-	226.363
Si	8943.690	+/-	476.885
Cl	2140.235	+/-	57.391
S	16124.723	+/-	291.887
Mg	1.000	+/-	12901.199

mRFA -Ergebnisse

XL3t-69288

Reading No 2  
Mode Mining  
Time 2020-07-15 10:33  
Duration 121.03  
Units ppm  
Sigma Value 2  
Sequence Final  
Flags  
INV NR Gm1171  
OBJEKT TAFELGEMAELEN  
MATERIAL HOLZ METALL FASSUNG  
ANALYSESTELLE P2 NIMBUS MARIA SCHWARZZEICHNU  
MESSAUFBAU STATIV  
FILTER m30lo30hi30li30  
User Login Raquet



Ele	ppm	+/-	$\pm 2\sigma$
Ce	-339.000	+/-	121.307
La	1.000	+/-	55.376
Ba	1.000	+/-	59.253
Sb	1.000	+/-	22.039
Sn	1971.891	+/-	44.483
Cd	22.838	+/-	8.571
Ag	698.434	+/-	21.074
Bal	861792.625	+/-	1128.991
Nb	62.982	+/-	21.951
Zr	1.000	+/-	86.352
Y	1.000	+/-	18.871
Sr	74.207	+/-	6.837
Rb	1.000	+/-	35.985
Th	1.000	+/-	1021.485
Bi	1.000	+/-	1178.764
Au	433.489	+/-	46.332
As	7101.043	+/-	202.762
Se	35.433	+/-	25.310
Pb	34354.898	+/-	557.076
Hg	519.916	+/-	27.915
Zn	213.469	+/-	19.593
Cu	379.184	+/-	28.675
Ni	1.000	+/-	34.908
Co	1.000	+/-	63.531
Fe	9363.386	+/-	247.705
Mn	1.000	+/-	68.721
Cr	79.498	+/-	23.458
V	1.000	+/-	31.439
Ti	351.310	+/-	130.390
Ca	31872.320	+/-	566.060
K	2716.422	+/-	203.641
Al	3832.753	+/-	709.216
P	3664.645	+/-	157.496
Si	20692.086	+/-	657.859
Cl	2165.669	+/-	55.910
S	17601.467	+/-	323.862
Mg	1.000	+/-	6647.470

mRFA -Ergebnisse

XL3t-69288

Reading No 3  
Mode Mining  
Time 2020-07-15 10:37  
Duration 122.02  
Units ppm  
Sigma Value 2  
Sequence Final  
Flags  
INV NR Gm1171  
OBJEKT TAFELGEMAELEN  
MATERIAL HOLZ METALL FASSUNG  
ANALYSESTELLE P3 NIMBUS JESUS  
MESSAUFBAU STATIV  
FILTER m30lo30hi30li30  
User Login Raquet



Ele	ppm	+/-	$\pm 2\sigma$
Ce	-339.000	+/-	139.207
La	1.000	+/-	63.536
Ba	1.000	+/-	77.014
Sb	1.000	+/-	28.924
Sn	1313.636	+/-	38.496
Cd	12.877	+/-	9.020
Ag	324.869	+/-	15.438
Bal	833708.063	+/-	1597.285
Nb	112.887	+/-	33.828
Zr	1.000	+/-	107.166
Y	1.000	+/-	28.031
Sr	121.646	+/-	9.031
Rb	1.000	+/-	55.302
Th	1.000	+/-	1469.375
Bi	1.000	+/-	1526.666
Au	63.897	+/-	46.459
As	9366.718	+/-	282.185
Se	26.916	+/-	19.225
Pb	53239.063	+/-	935.844
Hg	1.000	+/-	21.183
Zn	230.924	+/-	20.620
Cu	1972.216	+/-	70.318
Ni	1.000	+/-	55.556
Co	1.000	+/-	56.419
Fe	5257.633	+/-	190.647
Mn	1.000	+/-	117.605
Cr	34.544	+/-	24.254
V	1.000	+/-	22.768
Ti	1.000	+/-	115.417
Ca	40799.664	+/-	746.620
K	1076.889	+/-	178.602
Al	2726.877	+/-	742.884
P	9730.396	+/-	268.363
Si	10014.785	+/-	486.805
Cl	3049.984	+/-	74.947
S	26815.480	+/-	516.122
Mg	1.000	+/-	11854.767

mRFA -Ergebnisse

XL3t-69288

Reading No 4  
Mode Mining  
Time 2020-07-15 10:42  
Duration 121.28  
Units ppm  
Sigma Value 2  
Sequence Final  
Flags  
INV NR Gm1171  
OBJEKT TAFELGEMAELEN  
MATERIAL HOLZ METALL FASSUNG  
ANALYSESTELLE P4 NIMBUS JESUS  
MESSAUFBAU STATIV  
FILTER m30lo30hi30li30  
User Login Raquet



Ele	ppm	+/-	$\pm 2\sigma$
Ce	-339.000	+/-	120.581
La	1.000	+/-	55.354
Ba	1.000	+/-	59.242
Sb	1.000	+/-	19.495
Sn	944.926	+/-	29.289
Cd	20.778	+/-	8.294
Ag	223.942	+/-	12.153
Bal	854360.563	+/-	1169.840
Nb	73.133	+/-	23.168
Zr	1.000	+/-	76.540
Y	1.000	+/-	19.255
Sr	112.593	+/-	7.155
Rb	1.000	+/-	37.815
Th	1.000	+/-	1067.609
Bi	1.000	+/-	1023.914
Au	1.000	+/-	49.291
As	7094.773	+/-	204.967
Se	14.534	+/-	14.186
Pb	36725.492	+/-	580.206
Hg	1.000	+/-	19.635
Zn	204.757	+/-	18.208
Cu	2057.518	+/-	64.503
Ni	1.000	+/-	34.486
Co	1.000	+/-	57.761
Fe	8149.684	+/-	221.147
Mn	1.000	+/-	77.376
Cr	45.351	+/-	22.405
V	22.767	+/-	20.672
Ti	270.305	+/-	114.009
Ca	27646.266	+/-	489.163
K	1842.727	+/-	176.309
Al	2750.613	+/-	687.572
P	8016.685	+/-	226.086
Si	21950.217	+/-	676.518
Cl	2691.764	+/-	63.253
S	24780.611	+/-	428.054
Mg	1.000	+/-	8476.522

mRFA -Ergebnisse

XL3t-69288

Reading No 5  
Mode Mining  
Time 2020-07-15 10:47  
Duration 122.28  
Units ppm  
Sigma Value 2  
Sequence Final  
Flags  
INV NR Gm1171  
OBJEKT TAFELGEMAELEN  
MATERIAL HOLZ METALL FASSUNG  
ANALYSESTELLE P5 MANDORLA  
MESSAUFBAU STATIV  
FILTER m30lo30hi30li30  
User Login Raquet



Ele	ppm	+/-	$\pm 2\sigma$
Ce	1326.728	+/-	409.153
La	628.461	+/-	183.301
Ba	637.103	+/-	192.209
Sb	1.000	+/-	57.540
Sn	975.775	+/-	69.227
Cd	48.460	+/-	24.213
Ag	635.754	+/-	45.004
Bal	598409.000	+/-	7924.478
Nb	476.590	+/-	139.565
Zr	1.000	+/-	378.970
Y	1.000	+/-	106.992
Sr	1.000	+/-	21.580
Rb	1.000	+/-	223.950
Th	1.000	+/-	4939.639
Bi	1.000	+/-	3629.853
Au	1.000	+/-	104.874
As	19456.758	+/-	781.595
Se	1.000	+/-	53.301
Pb	207158.469	+/-	5434.009
Hg	1.000	+/-	58.173
Zn	554.031	+/-	49.956
Cu	15018.482	+/-	385.780
Ni	121.311	+/-	76.913
Co	107.678	+/-	58.889
Fe	184.322	+/-	112.144
Mn	240.181	+/-	137.681
Cr	1.000	+/-	46.684
V	1.000	+/-	38.335
Ti	1.000	+/-	176.705
Ca	63916.406	+/-	1466.444
K	1239.251	+/-	258.617
Al	3426.301	+/-	1422.249
P	2572.752	+/-	208.720
Si	18275.164	+/-	750.723
Cl	4146.556	+/-	126.076
S	42668.285	+/-	968.190
Mg	17436.236	+/-	15566.514

mRFA -Ergebnisse

XL3t-69288

Reading No 6  
Mode Mining  
Time 2020-07-15 10:52  
Duration 120.11  
Units ppm  
Sigma Value 2  
Sequence Final  
Flags  
INV NR Gm1171  
OBJEKT TAFELGEMAELEN  
MATERIAL HOLZ METALL FASSUNG  
ANALYSESTELLE P6 Mondsichel  
MESSAUFBAU STATIV  
FILTER m30lo30hi30li30  
User Login Raquet



Ele	ppm	+/-	$\pm 2\sigma$
Ce	-339.000	+/-	156.648
La	1.000	+/-	71.889
Ba	1.000	+/-	76.157
Sb	1.000	+/-	35.027
Sn	372.981	+/-	24.288
Cd	1.000	+/-	9.825
Ag	506.999	+/-	21.239
Bal	797427.625	+/-	2005.617
Nb	133.536	+/-	38.575
Zr	1.000	+/-	119.385
Y	1.000	+/-	31.306
Sr	96.776	+/-	8.948
Rb	1.000	+/-	63.143
Th	1.000	+/-	1627.532
Bi	1.000	+/-	1645.672
Au	1.000	+/-	36.878
As	10381.765	+/-	303.341
Se	27.361	+/-	19.543
Pb	64268.082	+/-	1110.577
Hg	1.000	+/-	21.227
Zn	291.084	+/-	21.321
Cu	1541.629	+/-	59.758
Ni	1.000	+/-	50.879
Co	1.000	+/-	51.668
Fe	131.516	+/-	62.179
Mn	100.196	+/-	79.665
Cr	1.000	+/-	25.249
V	1.000	+/-	19.340
Ti	1.000	+/-	100.304
Ca	62804.727	+/-	1075.477
K	767.370	+/-	204.036
Al	2179.177	+/-	886.090
P	1337.652	+/-	152.992
Si	8711.595	+/-	477.123
Cl	3624.291	+/-	87.926
S	25240.543	+/-	477.825
Mg	20055.063	+/-	9999.818

mRFA -Ergebnisse

XL3t-69288

Reading No 7  
Mode Mining  
Time 2020-07-15 10:56  
Duration 120.23  
Units ppm  
Sigma Value 2  
Sequence Final  
Flags  
INV NR Gm1171  
OBJEKT TAFELGEMAELEN  
MATERIAL HOLZ METALL FASSUNG  
ANALYSESTELLE P7 NIMBUS JOHANNES  
MESSAUFBAU STATIV  
FILTER m30lo30hi30li30  
User Login Raquet



Ele	ppm	+/-	$\pm 2\sigma$
Ce	-339.000	+/-	134.065
La	1.000	+/-	60.801
Ba	1.000	+/-	65.132
Sb	1.000	+/-	21.327
Sn	1866.582	+/-	45.665
Cd	20.534	+/-	9.093
Ag	271.788	+/-	13.703
Bal	831512.063	+/-	1507.004
Nb	61.359	+/-	28.265
Zr	1.000	+/-	92.478
Y	1.000	+/-	23.946
Sr	89.756	+/-	8.777
Rb	1.000	+/-	48.687
Th	1.000	+/-	1285.914
Bi	1.000	+/-	1165.992
Au	697.137	+/-	60.836
As	8976.818	+/-	252.442
Se	20.433	+/-	16.725
Pb	42193.551	+/-	714.216
Hg	909.517	+/-	38.169
Zn	209.625	+/-	24.115
Cu	4130.451	+/-	108.919
Ni	1.000	+/-	40.208
Co	1.000	+/-	58.439
Fe	6300.848	+/-	202.962
Mn	1.000	+/-	122.832
Cr	44.895	+/-	22.953
V	1.000	+/-	25.452
Ti	1.000	+/-	100.813
Ca	46453.992	+/-	779.455
K	1427.178	+/-	186.254
Al	1979.364	+/-	779.046
P	18390.623	+/-	399.566
Si	8727.168	+/-	511.626
Cl	2998.115	+/-	72.347
S	22718.244	+/-	408.377
Mg	1.000	+/-	7988.165

mRFA -Ergebnisse

XL3t-69288

Reading No 8  
Mode Mining  
Time 2020-07-15 11:00  
Duration 121.27  
Units ppm  
Sigma Value 2  
Sequence Final  
Flags  
INV NR Gm1171  
OBJEKT TAFELGEMAELEN  
MATERIAL HOLZ METALL FASSUNG  
ANALYSESTELLE P8 MANTEL ROCKLACK  
MESSAUFBAU STATIV  
FILTER m30lo30hi30li30  
User Login Raquet



Ele	ppm	+/-	$\pm 2\sigma$
Ce	-339.000	+/-	107.925
La	1.000	+/-	49.441
Ba	1.000	+/-	52.960
Sb	1.000	+/-	17.604
Sn	14.753	+/-	9.791
Cd	21.518	+/-	7.438
Ag	6.083	+/-	4.679
Bal	899326.313	+/-	785.510
Nb	40.404	+/-	17.632
Zr	1.000	+/-	59.965
Y	1.000	+/-	15.007
Sr	125.554	+/-	7.686
Rb	1.000	+/-	28.869
Th	1.000	+/-	845.856
Bi	1.000	+/-	852.265
Au	1.000	+/-	35.782
As	6879.875	+/-	173.382
Se	25.160	+/-	17.972
Pb	25839.109	+/-	393.530
Hg	1806.888	+/-	41.577
Zn	301.091	+/-	22.166
Cu	298.763	+/-	24.593
Ni	1.000	+/-	31.270
Co	1.000	+/-	26.574
Fe	700.284	+/-	67.608
Mn	1.000	+/-	104.717
Cr	1.000	+/-	25.799
V	1.000	+/-	37.584
Ti	322.396	+/-	155.728
Ca	29104.850	+/-	496.979
K	3363.598	+/-	179.664
Al	3448.350	+/-	576.251
P	2861.518	+/-	128.702
Si	6605.476	+/-	342.766
Cl	1973.835	+/-	47.599
S	16934.195	+/-	291.318
Mg	1.000	+/-	7396.873



mRFA -Ergebnisse

XL3t-69288

Reading No 9  
Mode Mining  
Time 2020-07-15 11:04  
Duration 120.16  
Units ppm  
Sigma Value 2  
Sequence Final  
Flags  
INV NR Gm1171  
OBJEKT TAFELGEMAELEN  
MATERIAL HOLZ METALL FASSUNG  
ANALYSESTELLE P9 MANTELFUTTER  
MESSAUFBAU STATIV  
FILTER m30lo30hi30li30  
User Login Raquet



Ele	ppm	+/-	$\pm 2\sigma$
Ce	-339.000	+/-	121.715
La	1.000	+/-	55.731
Ba	1.000	+/-	59.522
Sb	1.000	+/-	19.878
Sn	21.981	+/-	10.978
Cd	8.257	+/-	7.705
Ag	1.000	+/-	5.666
Bal	884885.438	+/-	973.463
Nb	61.060	+/-	23.654
Zr	1.000	+/-	77.752
Y	1.000	+/-	19.881
Sr	141.481	+/-	7.488
Rb	1.000	+/-	38.732
Th	1.000	+/-	1078.783
Bi	1.000	+/-	991.500
Au	1.000	+/-	26.142
As	8812.522	+/-	221.655
Se	1.000	+/-	21.313
Pb	36974.484	+/-	583.377
Hg	1.000	+/-	16.130
Zn	169.308	+/-	14.490
Cu	432.299	+/-	29.622
Ni	1.000	+/-	33.021
Co	32.735	+/-	28.096
Fe	200.932	+/-	55.170
Mn	1.000	+/-	107.916
Cr	1.000	+/-	30.006
V	1.000	+/-	15.828
Ti	1.000	+/-	82.259
Ca	22368.146	+/-	412.455
K	2998.679	+/-	166.687
Al	5689.322	+/-	688.904
P	1500.038	+/-	123.441
Si	8405.622	+/-	387.351
Cl	3408.846	+/-	73.840
S	23888.953	+/-	423.200
Mg	1.000	+/-	7423.960

mRFA -Ergebnisse

XL3t-69288

Reading No 10  
Mode Mining  
Time 2020-07-15 11:11  
Duration 120.76  
Units ppm  
Sigma Value 2  
Sequence Final  
Flags  
INV NR Gm1171  
OBJEKT TAFELGEMAELEN  
MATERIAL HOLZ METALL FASSUNG  
ANALYSESTELLE P10 HINTERGRUND U SCHLEIERWERK  
MESSAUFBAU STATIV  
FILTER m30lo30hi30li30  
User Login Raquet



Ele	ppm	+/-	$\pm 2\sigma$
Ce	-339.000	+/-	68.312
La	1.000	+/-	31.501
Ba	1.000	+/-	33.783
Sb	1.000	+/-	17.906
Sn	13.490	+/-	6.651
Cd	11.523	+/-	4.925
Ag	6.128	+/-	3.262
Bal	817779.375	+/-	864.784
Nb	1.000	+/-	4.736
Zr	1.000	+/-	12.388
Y	10.499	+/-	2.783
Sr	131.481	+/-	3.631
Rb	5.529	+/-	5.118
Th	1.000	+/-	168.561
Bi	1.000	+/-	184.675
Au	1.000	+/-	4.502
As	1.000	+/-	17.902
Se	1.000	+/-	3.378
Pb	820.067	+/-	17.875
Hg	19.432	+/-	2.787
Zn	1.000	+/-	5.285
Cu	306.182	+/-	18.457
Ni	1.000	+/-	23.082
Co	1.000	+/-	96.066
Fe	63565.172	+/-	474.416
Mn	2604.103	+/-	94.118
Cr	129.761	+/-	29.439
V	52.150	+/-	29.390
Ti	1.000	+/-	203.271
Ca	40995.367	+/-	444.560
K	8347.951	+/-	306.923
Al	3023.310	+/-	682.510
P	30786.045	+/-	338.658
Si	24929.627	+/-	675.502
Cl	311.685	+/-	22.788
S	6151.057	+/-	86.298
Mg	1.000	+/-	6623.978

mRFA -Ergebnisse

XL3t-69288

Reading No 11  
Mode Mining  
Time 2020-07-15 11:15  
Duration 120.57  
Units ppm  
Sigma Value 2  
Sequence Final  
Flags  
INV NR Gm1171  
OBJEKT TAFELGEMAELEN  
MATERIAL HOLZ METALL FASSUNG  
ANALYSESTELLE P11 HINTERGRUND ESELSRUECKEN  
MESSAUFBAU STATIV  
FILTER m30lo30hi30li30  
User Login Raquet



Ele	ppm	+/-	$\pm 2\sigma$
Ce	-339.000	+/-	57.738
La	1.000	+/-	26.292
Ba	1.000	+/-	28.469
Sb	1.000	+/-	10.498
Sn	11.348	+/-	5.626
Cd	18.303	+/-	4.395
Ag	4.070	+/-	2.718
Bal	807744.813	+/-	840.902
Nb	5.250	+/-	2.679
Zr	1.000	+/-	10.682
Y	11.326	+/-	2.405
Sr	102.539	+/-	2.957
Rb	3.730	+/-	3.723
Th	1.000	+/-	121.996
Bi	1.000	+/-	99.096
Au	1.000	+/-	4.898
As	1.000	+/-	13.850
Se	1.000	+/-	2.347
Pb	840.563	+/-	16.436
Hg	28.652	+/-	1.899
Zn	1.000	+/-	4.305
Cu	88.878	+/-	11.962
Ni	1.000	+/-	18.161
Co	1.000	+/-	68.155
Fe	35418.504	+/-	290.576
Mn	1485.298	+/-	74.128
Cr	86.441	+/-	23.592
V	37.790	+/-	22.684
Ti	1.000	+/-	123.979
Ca	93223.828	+/-	615.631
K	4515.029	+/-	207.196
Al	4020.088	+/-	758.165
P	27917.617	+/-	317.045
Si	16769.613	+/-	600.678
Cl	300.984	+/-	22.530
S	7365.284	+/-	94.600
Mg	1.000	+/-	6892.983

mRFA -Ergebnisse

XL3t-69288

Reading No 12  
Mode Mining  
Time 2020-07-15 11:18  
Duration 121.57  
Units ppm  
Sigma Value 2  
Sequence Final  
Flags  
INV NR Gm1171  
OBJEKT TAFELGEMAELEN  
MATERIAL HOLZ METALL FASSUNG  
ANALYSESTELLE P12 HINTERGRUND GROBES BLAU  
MESSAUFBAU STATIV  
FILTER m30lo30hi30li30  
User Login Raquet

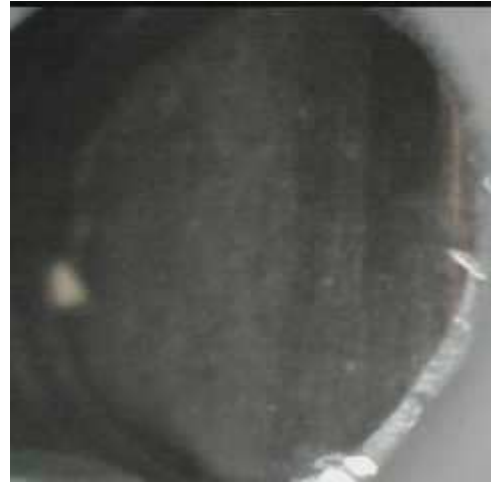


Ele	ppm	+/-	$\pm 2\sigma$
Ce	-339.000	+/-	66.636
La	1.000	+/-	30.648
Ba	263.979	+/-	36.752
Sb	1.000	+/-	19.031
Sn	11.418	+/-	6.403
Cd	16.203	+/-	4.885
Ag	10.844	+/-	3.340
Bal	851853.250	+/-	804.941
Nb	1.000	+/-	4.065
Zr	1.000	+/-	11.908
Y	6.985	+/-	3.038
Sr	99.456	+/-	3.611
Rb	1.000	+/-	5.102
Th	1.000	+/-	171.431
Bi	1.000	+/-	167.739
Au	1.000	+/-	4.696
As	1.000	+/-	20.276
Se	1.000	+/-	3.421
Pb	905.095	+/-	21.159
Hg	23.516	+/-	3.096
Zn	1.000	+/-	19.463
Cu	40927.434	+/-	329.663
Ni	1.000	+/-	22.677
Co	1.000	+/-	65.251
Fe	24517.635	+/-	245.077
Mn	899.609	+/-	89.426
Cr	1.000	+/-	33.863
V	1.000	+/-	120.963
Ti	1.000	+/-	651.084
Ca	48162.031	+/-	430.806
K	2318.627	+/-	165.118
Al	2030.536	+/-	526.911
P	9171.021	+/-	163.980
Si	13955.296	+/-	447.342
Cl	316.814	+/-	19.661
S	4510.283	+/-	65.866
Mg	1.000	+/-	5043.927

mRFA -Ergebnisse

XL3t-69288

Reading No 13  
Mode Mining  
Time 2020-07-15 11:22  
Duration 120.90  
Units ppm  
Sigma Value 2  
Sequence Final  
Flags  
INV NR Gm1171  
OBJEKT TAFELGEMAELEN  
MATERIAL HOLZ METALL FASSUNG  
ANALYSESTELLE P13 HINTERGRUND UEBERMALUNG  
MESSAUFBAU STATIV  
FILTER m30lo30hi30li30  
User Login Raquet



Ele	ppm	+/-	$\pm 2\sigma$
Ce	-339.000	+/-	45.731
La	1.000	+/-	20.888
Ba	1.000	+/-	22.539
Sb	11.280	+/-	8.638
Sn	13.668	+/-	4.627
Cd	18.381	+/-	3.612
Ag	7.033	+/-	2.327
Bal	907596.500	+/-	424.425
Nb	14.102	+/-	1.950
Zr	11.962	+/-	4.966
Y	4.988	+/-	1.475
Sr	8.975	+/-	1.115
Rb	1.000	+/-	2.954
Th	1.000	+/-	68.695
Bi	1.000	+/-	66.252
Au	1.000	+/-	2.449
As	56.381	+/-	9.199
Se	1.000	+/-	1.273
Pb	234.253	+/-	7.733
Hg	1.000	+/-	1.000
Zn	24.017	+/-	5.319
Cu	42.270	+/-	9.448
Ni	1.000	+/-	15.481
Co	1.000	+/-	38.626
Fe	12192.635	+/-	140.646
Mn	389.906	+/-	49.436
Cr	1.000	+/-	24.652
V	1.000	+/-	24.167
Ti	126.731	+/-	83.076
Ca	21870.012	+/-	227.946
K	3561.788	+/-	152.328
Al	5070.971	+/-	520.433
P	10067.606	+/-	162.405
Si	25571.590	+/-	527.561
Cl	1201.662	+/-	26.212
S	11903.318	+/-	105.868
Mg	1.000	+/-	6053.490

mRFA -Ergebnisse

XL3t-69288

Reading No 14  
Mode Mining  
Time 2020-07-15 11:29  
Duration 121.59  
Units ppm  
Sigma Value 2  
Sequence Final  
Flags  
INV NR Gm1171  
OBJEKT TAFELGEMAELEN  
MATERIAL HOLZ METALL FASSUNG  
ANALYSESTELLE P14 HINTERGRUND UEBERMALUNG 2  
MESSAUFBAU STATIV  
FILTER m30lo30hi30li30  
User Login Raquet



Ele	ppm	+/-	$\pm 2\sigma$
Ce	-339.000	+/-	85.668
La	1.000	+/-	39.227
Ba	583.857	+/-	49.535
Sb	1.000	+/-	21.977
Sn	29.765	+/-	8.488
Cd	13.713	+/-	6.016
Ag	6.075	+/-	3.932
Bal	778928.938	+/-	1274.268
Nb	1.000	+/-	15.279
Zr	1.000	+/-	65.577
Y	13.860	+/-	7.311
Sr	99.382	+/-	4.265
Rb	1.000	+/-	28.586
Th	1.000	+/-	680.254
Bi	1810.719	+/-	522.660
Au	1.000	+/-	18.443
As	5440.280	+/-	100.205
Se	22.801	+/-	16.287
Pb	1020.257	+/-	30.108
Hg	1.000	+/-	11.239
Zn	1.000	+/-	23.328
Cu	43833.875	+/-	595.574
Ni	830.284	+/-	50.274
Co	5494.781	+/-	127.836
Fe	18217.932	+/-	273.401
Mn	521.237	+/-	77.731
Cr	1.000	+/-	25.710
V	66.352	+/-	65.324
Ti	1.000	+/-	528.871
Ca	25410.289	+/-	369.125
K	8371.630	+/-	268.960
Al	4451.009	+/-	619.468
P	5322.085	+/-	137.259
Si	93067.313	+/-	1297.073
Cl	811.170	+/-	24.547
S	5632.419	+/-	89.569
Mg	1.000	+/-	4882.961