

mRFA -Ergebnisse

XL3t-69288

Reading No 10
Mode Mining
Time 2020-02-20 12:01
Duration 120.50
Units ppm
Sigma Value 2
Sequence Final
Flags
INV NR Gm1121
OBJEKT TAFELGEMAELEN
MATERIAL HOLZ METALL FASSUNG
ANALYSESTELLE P1 HINTERGRUND IS
MESSAUFBAU STATIV
FILTER m30lo30hi30li30
User Login Raquet



Ele	ppm	+/-	$\pm 2\sigma$
Ce	-339.000	+/-	97.362
La	1.000	+/-	44.718
Ba	1.000	+/-	48.158
Sb	20.034	+/-	17.319
Sn	70.818	+/-	10.550
Cd	7.621	+/-	6.536
Ag	26.002	+/-	5.241
Bal	744152.063	+/-	1380.444
Nb	13.871	+/-	8.378
Zr	1.000	+/-	29.986
Y	1.000	+/-	7.084
Sr	319.087	+/-	7.379
Rb	28.177	+/-	14.705
Th	1.000	+/-	443.704
Bi	1.000	+/-	403.591
Au	4299.658	+/-	75.294
As	1447.253	+/-	74.812
Se	1.000	+/-	10.796
Pb	9366.375	+/-	115.092
Hg	1.000	+/-	8.437
Zn	114.299	+/-	16.475
Cu	289.290	+/-	21.556
Ni	1.000	+/-	26.925
Co	1.000	+/-	26.228
Fe	1121.715	+/-	68.019
Mn	1.000	+/-	79.745
Cr	104.901	+/-	22.772
V	1.000	+/-	22.695
Ti	1.000	+/-	96.026
Ca	176425.078	+/-	1473.023
K	942.390	+/-	148.394
Al	1861.009	+/-	989.016
P	36144.754	+/-	463.671
Si	5072.373	+/-	552.576
Cl	785.895	+/-	36.764
S	17387.336	+/-	205.319
Mg	1.000	+/-	17348.879

mRFA -Ergebnisse

XL3t-69288

Reading No 11
Mode Mining
Time 2020-02-20 12:06
Duration 121.90
Units ppm
Sigma Value 2
Sequence Final
Flags 3mm
INV NR Gm1121
OBJEKT TAFELGEMAELEN
MATERIAL HOLZ METALL FASSUNG
ANALYSESTELLE P2 MONDGESICHT KINN IS
MESSAUFBAU STATIV
FILTER m30lo30hi30li30
User Login Raquet



Ele	ppm	+/-	$\pm 2\sigma$
Ce	1.000	+/-	127.223
La	1.000	+/-	103.730
Ba	1.000	+/-	109.047
Sb	1.000	+/-	38.067
Sn	108.067	+/-	35.810
Cd	1.000	+/-	20.352
Ag	514.066	+/-	33.451
Bal	761527.125	+/-	2310.991
Nb	17.128	+/-	14.576
Zr	1.000	+/-	53.278
Y	1.000	+/-	12.718
Sr	346.407	+/-	13.643
Rb	1.000	+/-	30.291
Th	1.000	+/-	743.134
Bi	1.000	+/-	723.946
Au	1057.280	+/-	65.542
As	2397.430	+/-	133.467
Se	1.000	+/-	21.880
Pb	10770.364	+/-	225.853
Hg	1.000	+/-	16.521
Zn	70.703	+/-	20.482
Cu	1031.360	+/-	63.275
Ni	1.000	+/-	41.285
Co	1.000	+/-	72.081
Fe	4834.015	+/-	233.709
Mn	158.672	+/-	120.321
Cr	1.000	+/-	57.478
V	1.000	+/-	35.293
Ti	1.000	+/-	152.866
Ca	160847.453	+/-	2326.013
K	1463.000	+/-	257.671
Al	5111.451	+/-	1214.318
P	10213.381	+/-	310.812
Si	14991.346	+/-	773.762
Cl	4022.503	+/-	108.927
S	20518.389	+/-	346.474
Mg	1.000	+/-	11357.725

mRFA -Ergebnisse

XL3t-69288

Reading No 12
Mode Mining
Time 2020-02-20 12:10
Duration 121.06
Units ppm
Sigma Value 2
Sequence Final
Flags 3mm
INV NR Gm1121
OBJEKT TAFELGEMAELEN
MATERIAL HOLZ METALL FASSUNG
ANALYSESTELLE P3 MONDGESICHT LIPPE IS
MESSAUFBAU STATIV
FILTER m30lo30hi30li30
User Login Raquet

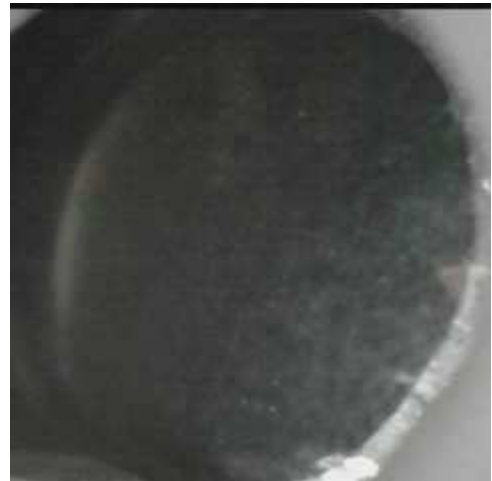


Ele	ppm	+/-	$\pm 2\sigma$
Ce	1.000	+/-	140.624
La	1.000	+/-	114.626
Ba	1.000	+/-	120.597
Sb	1.000	+/-	55.625
Sn	126.332	+/-	40.757
Cd	1.000	+/-	26.691
Ag	603.486	+/-	39.323
Bal	796408.688	+/-	2154.589
Nb	31.342	+/-	21.036
Zr	1.000	+/-	75.830
Y	1.000	+/-	18.461
Sr	338.777	+/-	14.745
Rb	1.000	+/-	38.722
Th	1.000	+/-	1031.655
Bi	1.000	+/-	1064.756
Au	758.293	+/-	64.568
As	4021.595	+/-	190.020
Se	1.000	+/-	23.115
Pb	19140.104	+/-	420.610
Hg	1.000	+/-	19.610
Zn	91.843	+/-	21.583
Cu	1563.447	+/-	81.994
Ni	1.000	+/-	45.992
Co	1.000	+/-	62.098
Fe	2507.915	+/-	176.678
Mn	119.919	+/-	118.954
Cr	46.807	+/-	36.757
V	1.000	+/-	29.547
Ti	1.000	+/-	161.326
Ca	115216.023	+/-	2081.977
K	1610.648	+/-	251.649
Al	5085.848	+/-	1104.537
P	6777.636	+/-	273.565
Si	13800.968	+/-	731.459
Cl	3880.642	+/-	113.979
S	27869.654	+/-	546.718
Mg	1.000	+/-	12674.296

mRFA -Ergebnisse

XL3t-69288

Reading No 13
Mode Mining
Time 2020-02-20 12:13
Duration 121.83
Units ppm
Sigma Value 2
Sequence Final
Flags
INV NR Gm1121
OBJEKT TAFELGEMAELEN
MATERIAL HOLZ METALL FASSUNG
ANALYSESTELLE P4 MANTEL IS
MESSAUFBAU STATIV
FILTER m30lo30hi30li30
User Login Raquet



Ele	ppm	+/-	$\pm 2\sigma$
Ce	-339.000	+/-	177.117
La	1.000	+/-	96.754
Ba	997.705	+/-	98.052
Sb	71.076	+/-	30.042
Sn	98.259	+/-	17.456
Cd	1.000	+/-	9.802
Ag	10.269	+/-	7.336
Bal	810887.938	+/-	2024.134
Nb	49.352	+/-	33.612
Zr	1.000	+/-	114.663
Y	1.000	+/-	29.704
Sr	191.721	+/-	11.739
Rb	1.000	+/-	54.529
Th	1.000	+/-	1593.644
Bi	1.000	+/-	1537.965
Au	1.000	+/-	37.415
As	3825.650	+/-	260.433
Se	1.000	+/-	22.518
Pb	43154.473	+/-	849.669
Hg	1.000	+/-	22.245
Zn	1.000	+/-	47.742
Cu	107705.742	+/-	1610.655
Ni	1.000	+/-	43.129
Co	1.000	+/-	37.576
Fe	1564.768	+/-	94.256
Mn	323.317	+/-	114.378
Cr	1.000	+/-	37.556
V	1.000	+/-	140.299
Ti	1.000	+/-	648.841
Ca	5724.386	+/-	168.189
K	768.862	+/-	157.088
Al	2140.353	+/-	589.674
P	706.020	+/-	86.041
Si	7158.992	+/-	318.069
Cl	1202.911	+/-	34.681
S	13418.242	+/-	238.703
Mg	1.000	+/-	6898.334

mRFA -Ergebnisse

XL3t-69288

Reading No 14
Mode Mining
Time 2020-02-20 12:18
Duration 122.11
Units ppm
Sigma Value 2
Sequence Final
Flags
INV NR Gm1121
OBJEKT TAFELGEMAELEN
MATERIAL HOLZ METALL FASSUNG
ANALYSESTELLE P5 DATIERUNG AS
MESSAUFBAU STATIV
FILTER m30lo30hi30li30
User Login Raquet



Ele	ppm	+/-	$\pm 2\sigma$
Ce	-339.000	+/-	162.886
La	1.000	+/-	73.773
Ba	1.000	+/-	78.437
Sb	35.746	+/-	27.280
Sn	1872.497	+/-	54.367
Cd	16.868	+/-	10.796
Ag	186.897	+/-	13.970
Bal	842310.563	+/-	1661.738
Nb	48.102	+/-	32.813
Zr	1.000	+/-	106.907
Y	1.000	+/-	28.431
Sr	1.000	+/-	14.359
Rb	1.000	+/-	54.635
Th	1.000	+/-	1461.479
Bi	1.000	+/-	1292.416
Au	1.000	+/-	88.636
As	10483.390	+/-	290.495
Se	48.987	+/-	34.991
Pb	42747.949	+/-	803.379
Hg	9833.000	+/-	186.676
Zn	678.294	+/-	47.702
Cu	248.648	+/-	31.097
Ni	1.000	+/-	46.122
Co	74.509	+/-	38.741
Fe	242.859	+/-	74.371
Mn	130.238	+/-	92.385
Cr	1.000	+/-	26.253
V	1.000	+/-	28.327
Ti	1.000	+/-	115.308
Ca	27250.857	+/-	555.913
K	1197.170	+/-	171.009
Al	2352.030	+/-	721.359
P	11902.163	+/-	305.592
Si	9165.351	+/-	464.923
Cl	1826.647	+/-	53.469
S	37347.211	+/-	715.308
Mg	1.000	+/-	7401.317

mRFA -Ergebnisse

XL3t-69288

Reading No 15
Mode Mining
Time 2020-02-20 12:21
Duration 121.46
Units ppm
Sigma Value 2
Sequence Final
Flags 3mm
INV NR Gm1121
OBJEKT TAFELGEMAELEN
MATERIAL HOLZ METALL FASSUNG
ANALYSESTELLE P6 UNTERZEICHNUNG AS
MESSAUFBAU STATIV
FILTER m30lo30hi30li30
User Login Raquet



Ele	ppm	+/-	$\pm 2\sigma$
Ce	1.000	+/-	104.475
La	1.000	+/-	85.190
Ba	1.000	+/-	104.654
Sb	35.182	+/-	33.855
Sn	47.804	+/-	22.812
Cd	30.777	+/-	13.911
Ag	1.000	+/-	11.050
Bal	837913.125	+/-	1535.376
Nb	33.143	+/-	17.981
Zr	1.000	+/-	62.881
Y	1.000	+/-	15.615
Sr	99.600	+/-	8.112
Rb	1.000	+/-	34.292
Th	1.000	+/-	879.653
Bi	1.000	+/-	840.795
Au	1.000	+/-	34.881
As	4169.958	+/-	164.636
Se	19.840	+/-	14.938
Pb	18018.799	+/-	348.541
Hg	613.852	+/-	34.064
Zn	114.450	+/-	20.326
Cu	354.169	+/-	35.441
Ni	1.000	+/-	35.484
Co	1.000	+/-	41.064
Fe	767.124	+/-	97.490
Mn	1.000	+/-	110.263
Cr	1.000	+/-	32.655
V	1.000	+/-	32.668
Ti	1.000	+/-	102.155
Ca	94404.219	+/-	1570.709
K	1829.188	+/-	193.014
Al	1657.634	+/-	736.707
P	2117.781	+/-	171.215
Si	12334.048	+/-	606.186
Cl	1564.163	+/-	60.690
S	23875.107	+/-	432.970
Mg	1.000	+/-	7962.958