

mRFA -Ergebnisse

XL3t-69288

Reading No 1  
Mode Mining  
Time 2020-02-20 11:19  
Duration 121.69  
Units ppm  
Sigma Value 2  
Sequence Final  
Flags  
INV NR Gm1120  
OBJEKT TAFELGEMAELE  
MATERIAL HOLZ METALL FASSUNG  
ANALYSESTELLE P1 HINTERGRUND IS  
MESSAUFBAU STATIV  
FILTER m30lo30hi30li30  
User Login Raquet



Ele	ppm	+/-	$\pm 2\sigma$
Ce	-339.000	+/-	93.345
La	1.000	+/-	42.994
Ba	1.000	+/-	46.391
Sb	1.000	+/-	19.208
Sn	213.157	+/-	13.360
Cd	15.960	+/-	6.659
Ag	33.956	+/-	5.467
Bal	759778.063	+/-	1279.831
Nb	19.813	+/-	7.416
Zr	1.000	+/-	37.275
Y	1.000	+/-	6.290
Sr	289.591	+/-	6.811
Rb	31.708	+/-	13.353
Th	1.000	+/-	390.890
Bi	1.000	+/-	461.420
Au	5328.829	+/-	84.588
As	1609.206	+/-	69.305
Se	1.000	+/-	18.033
Pb	7976.244	+/-	98.832
Hg	1.000	+/-	8.150
Zn	128.860	+/-	17.401
Cu	295.900	+/-	21.373
Ni	1.000	+/-	25.654
Co	1.000	+/-	28.930
Fe	1735.935	+/-	78.827
Mn	1.000	+/-	70.208
Cr	89.932	+/-	24.112
V	1.000	+/-	21.056
Ti	1.000	+/-	124.751
Ca	178633.234	+/-	1453.837
K	712.646	+/-	147.425
Al	1.000	+/-	1353.299
P	22728.111	+/-	356.926
Si	5179.109	+/-	511.116
Cl	1223.340	+/-	41.968
S	13976.466	+/-	175.283
Mg	1.000	+/-	10255.986

mRFA -Ergebnisse

XL3t-69288

Reading No 2  
Mode Mining  
Time 2020-02-20 11:23  
Duration 120.23  
Units ppm  
Sigma Value 2  
Sequence Final  
Flags 3mm  
INV NR Gm1120  
OBJEKT TAFELGEMAELEN  
MATERIAL HOLZ METALL FASSUNG  
ANALYSESTELLE P2 JOHANNES HINTERGRUND IS  
MESSAUFBAU STATIV  
FILTER m30lo30hi30li30  
User Login Raquet



Ele	ppm	+/-	$\pm 2\sigma$
Ce	1.000	+/-	139.459
La	1.000	+/-	115.568
Ba	1.000	+/-	121.832
Sb	1.000	+/-	63.801
Sn	143.996	+/-	34.595
Cd	21.366	+/-	17.077
Ag	1.000	+/-	17.754
Bal	797721.563	+/-	2152.880
Nb	40.206	+/-	22.163
Zr	1.000	+/-	93.362
Y	1.000	+/-	19.770
Sr	296.492	+/-	13.916
Rb	1.000	+/-	49.743
Th	1.000	+/-	1067.263
Bi	1.000	+/-	1192.643
Au	4356.332	+/-	146.400
As	5048.218	+/-	205.806
Se	27.874	+/-	21.701
Pb	21404.457	+/-	464.499
Hg	1.000	+/-	22.301
Zn	118.723	+/-	28.744
Cu	969.460	+/-	62.727
Ni	1.000	+/-	45.546
Co	1.000	+/-	48.485
Fe	1151.112	+/-	125.726
Mn	1.000	+/-	135.692
Cr	1.000	+/-	35.565
V	1.000	+/-	28.401
Ti	1.000	+/-	140.177
Ca	111452.445	+/-	2010.373
K	3688.337	+/-	264.215
Al	5914.958	+/-	1249.818
P	885.652	+/-	195.112
Si	18137.697	+/-	859.677
Cl	2483.792	+/-	91.386
S	26137.342	+/-	522.300
Mg	1.000	+/-	19130.305

mRFA -Ergebnisse

XL3t-69288

Reading No 3  
Mode Mining  
Time 2020-02-20 11:28  
Duration 120.31  
Units ppm  
Sigma Value 2  
Sequence Final  
Flags  
INV NR Gm1120  
OBJEKT TAFELGEMAELEN  
MATERIAL HOLZ METALL FASSUNG  
ANALYSESTELLE P3 UEBERVERGOLDUNG IS  
MESSAUFBAU STATIV  
FILTER m30lo30hi30li30  
User Login Raquet



Ele	ppm	+/-	$\pm 2\sigma$
Ce	-339.000	+/-	126.394
La	1.000	+/-	57.865
Ba	1.000	+/-	62.273
Sb	1.000	+/-	23.648
Sn	84.495	+/-	13.225
Cd	1.000	+/-	9.571
Ag	1.000	+/-	7.376
Bal	852721.125	+/-	1118.183
Nb	60.885	+/-	19.962
Zr	1.000	+/-	66.780
Y	1.000	+/-	16.937
Sr	220.012	+/-	8.241
Rb	1.000	+/-	32.919
Th	1.000	+/-	945.510
Bi	1.000	+/-	995.296
Au	107.762	+/-	33.924
As	8054.361	+/-	199.810
Se	33.521	+/-	23.943
Pb	31918.850	+/-	488.709
Hg	1.000	+/-	13.250
Zn	200.553	+/-	15.802
Cu	820.239	+/-	37.986
Ni	1.000	+/-	32.471
Co	1.000	+/-	32.962
Fe	1474.426	+/-	88.838
Mn	1.000	+/-	105.379
Cr	32.519	+/-	23.164
V	1.000	+/-	25.082
Ti	1.000	+/-	101.540
Ca	57926.102	+/-	880.612
K	666.044	+/-	131.707
Al	2311.180	+/-	732.350
P	2737.906	+/-	164.553
Si	11663.574	+/-	509.080
Cl	1432.538	+/-	44.868
S	27534.000	+/-	450.160
Mg	1.000	+/-	12310.272

mRFA -Ergebnisse

XL3t-69288

Reading No 4  
Mode Mining  
Time 2020-02-20 11:35  
Duration 120.45  
Units ppm  
Sigma Value 2  
Sequence Final  
Flags 3mm  
INV NR Gm1120  
OBJEKT TAFELGEMAELENDE  
MATERIAL HOLZ METALL FASSUNG  
ANALYSESTELLE P4 BUCHSCHLIESSE IS  
MESSAUFBAU STATIV  
FILTER m30lo30hi30li30  
User Login Raquet



Ele	ppm	+/-	$\pm 2\sigma$
Ce	1.000	+/-	309.641
La	1.000	+/-	213.621
Ba	712.680	+/-	243.245
Sb	1.000	+/-	113.288
Sn	1245.548	+/-	111.394
Cd	1.000	+/-	30.738
Ag	1.000	+/-	29.462
Bal	725950.250	+/-	4245.361
Nb	85.493	+/-	54.645
Zr	1.000	+/-	181.904
Y	1.000	+/-	47.985
Sr	166.599	+/-	17.575
Rb	1.000	+/-	90.402
Th	1.000	+/-	2429.174
Bi	1.000	+/-	2284.473
Au	1.000	+/-	69.690
As	7294.557	+/-	418.591
Se	39.277	+/-	33.273
Pb	58665.855	+/-	1573.708
Hg	1.000	+/-	48.215
Zn	1.000	+/-	77.559
Cu	125734.727	+/-	2496.444
Ni	1.000	+/-	60.060
Co	1.000	+/-	96.154
Fe	4443.067	+/-	209.324
Mn	304.326	+/-	137.712
Cr	1.000	+/-	48.676
V	1.000	+/-	118.657
Ti	1.000	+/-	617.302
Ca	12448.332	+/-	393.699
K	2009.971	+/-	263.050
Al	5244.710	+/-	1346.136
P	1348.801	+/-	182.145
Si	19233.076	+/-	875.694
Cl	11358.250	+/-	283.334
S	23714.430	+/-	530.347
Mg	1.000	+/-	21242.059

mRFA -Ergebnisse

XL3t-69288

Reading No 5  
Mode Mining  
Time 2020-02-20 11:39  
Duration 121.00  
Units ppm  
Sigma Value 2  
Sequence Final  
Flags  
INV NR Gm1120  
OBJEKT TAFELGEMAELEN  
MATERIAL HOLZ METALL FASSUNG  
ANALYSESTELLE P5 ROTLACK IS  
MESSAUFBAU STATIV  
FILTER m30lo30hi30li30  
User Login Raquet



Ele	ppm	+/-	$\pm 2\sigma$
Ce	-339.000	+/-	95.977
La	1.000	+/-	44.054
Ba	1.000	+/-	47.425
Sb	1.000	+/-	22.343
Sn	93.214	+/-	10.927
Cd	11.632	+/-	6.636
Ag	1.000	+/-	6.007
Bal	793745.188	+/-	1187.404
Nb	24.438	+/-	9.653
Zr	1.000	+/-	47.587
Y	1.000	+/-	8.398
Sr	322.368	+/-	7.496
Rb	1.000	+/-	15.532
Th	1.000	+/-	505.091
Bi	1.000	+/-	609.974
Au	1.000	+/-	13.970
As	3417.121	+/-	97.744
Se	14.729	+/-	10.521
Pb	13131.334	+/-	169.098
Hg	1.000	+/-	7.946
Zn	81.557	+/-	11.543
Cu	3351.678	+/-	71.588
Ni	1.000	+/-	26.214
Co	1.000	+/-	24.912
Fe	1176.432	+/-	68.605
Mn	91.369	+/-	61.227
Cr	1.000	+/-	24.099
V	1.000	+/-	24.091
Ti	1.000	+/-	123.721
Ca	122001.773	+/-	1264.122
K	4151.326	+/-	186.552
Al	4245.269	+/-	1056.623
P	570.781	+/-	159.341
Si	18804.828	+/-	703.283
Cl	1410.658	+/-	46.906
S	20951.664	+/-	275.872
Mg	12402.578	+/-	10458.399

mRFA -Ergebnisse

XL3t-69288

Reading No 6  
Mode Mining  
Time 2020-02-20 11:43  
Duration 121.25  
Units ppm  
Sigma Value 2  
Sequence Final  
Flags  
INV NR Gm1120  
OBJEKT TAFELGEMAELEN  
MATERIAL HOLZ METALL FASSUNG  
ANALYSESTELLE P6 KREUZBALKEMN IS  
MESSAUFBAU STATIV  
FILTER m30lo30hi30li30  
User Login Raquet



Ele	ppm	+/-	$\pm 2\sigma$
Ce	-339.000	+/-	81.443
La	1.000	+/-	37.647
Ba	1.000	+/-	40.670
Sb	1.000	+/-	19.809
Sn	74.006	+/-	9.217
Cd	16.470	+/-	5.915
Ag	7.461	+/-	3.864
Bal	802117.250	+/-	1017.968
Nb	11.864	+/-	6.241
Zr	1.000	+/-	28.525
Y	1.000	+/-	5.118
Sr	267.737	+/-	5.870
Rb	1.000	+/-	15.738
Th	1.000	+/-	330.967
Bi	1.000	+/-	321.195
Au	1.000	+/-	11.165
As	1802.791	+/-	60.631
Se	1.000	+/-	8.531
Pb	6567.132	+/-	77.220
Hg	1.000	+/-	6.956
Zn	68.674	+/-	9.235
Cu	795.584	+/-	28.758
Ni	1.000	+/-	23.918
Co	1.000	+/-	68.001
Fe	24695.957	+/-	311.660
Mn	1.000	+/-	78.212
Cr	86.959	+/-	26.658
V	36.828	+/-	30.825
Ti	1530.544	+/-	179.114
Ca	69749.023	+/-	649.831
K	8953.919	+/-	262.057
Al	10754.600	+/-	967.468
P	1342.388	+/-	112.726
Si	62168.684	+/-	987.505
Cl	1292.891	+/-	35.060
S	7659.221	+/-	105.287
Mg	1.000	+/-	10757.882

mRFA -Ergebnisse

XL3t-69288

Reading No 7  
Mode Mining  
Time 2020-02-20 11:48  
Duration 122.11  
Units ppm  
Sigma Value 2  
Sequence Final  
Flags  
INV NR Gm1120  
OBJEKT TAFELGEMAELEN  
MATERIAL HOLZ METALL FASSUNG  
ANALYSESTELLE P7 KREUZBALKEMN AS  
MESSAUFBAU STATIV  
FILTER m30lo30hi30li30  
User Login Raquet



Ele	ppm	+/-	$\pm 2\sigma$
Ce	-339.000	+/-	64.910
La	1.000	+/-	29.628
Ba	1.000	+/-	32.060
Sb	1.000	+/-	17.044
Sn	39.685	+/-	6.972
Cd	19.052	+/-	4.944
Ag	7.505	+/-	3.187
Bal	785423.750	+/-	1024.723
Nb	14.757	+/-	4.216
Zr	22.028	+/-	15.068
Y	1.000	+/-	3.305
Sr	135.712	+/-	3.864
Rb	7.632	+/-	6.593
Th	1.000	+/-	215.788
Bi	1.000	+/-	250.939
Au	1.000	+/-	10.297
As	877.943	+/-	39.067
Se	1.000	+/-	5.763
Pb	3252.347	+/-	40.773
Hg	324.741	+/-	10.103
Zn	70.400	+/-	9.359
Cu	633.594	+/-	23.948
Ni	1.000	+/-	20.755
Co	1.000	+/-	58.074
Fe	20860.891	+/-	246.678
Mn	1.000	+/-	47.506
Cr	68.067	+/-	24.639
V	1.000	+/-	43.813
Ti	1280.746	+/-	163.702
Ca	79149.836	+/-	640.419
K	8626.500	+/-	255.156
Al	13937.806	+/-	946.488
P	434.468	+/-	93.083
Si	71359.727	+/-	966.099
Cl	691.737	+/-	25.997
S	6382.868	+/-	84.845
Mg	6378.198	+/-	5856.440

mRFA -Ergebnisse

XL3t-69288

Reading No 8  
Mode Mining  
Time 2020-02-20 11:51  
Duration 121.26  
Units ppm  
Sigma Value 2  
Sequence Final  
Flags  
INV NR Gm1120  
OBJEKT TAFELGEMAELEN  
MATERIAL HOLZ METALL FASSUNG  
ANALYSESTELLE P8 RUTE AS  
MESSAUFBAU STATIV  
FILTER m30lo30hi30li30  
User Login Raquet



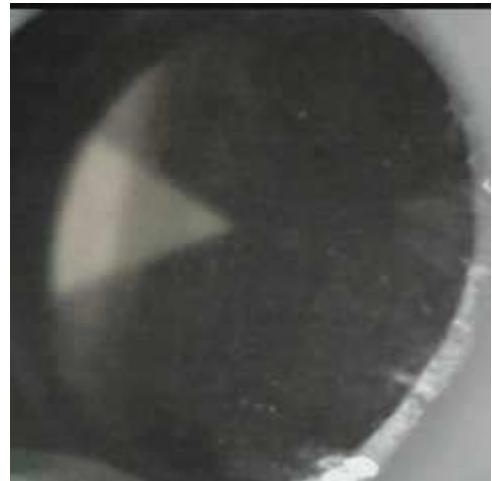
Ele	ppm	+/-	$\pm 2\sigma$
Ce	-339.000	+/-	62.656
La	1.000	+/-	28.717
Ba	1.000	+/-	31.768
Sb	19.011	+/-	11.609
Sn	120.597	+/-	8.332
Cd	17.217	+/-	4.707
Ag	20.074	+/-	3.536
Bal	865483.250	+/-	704.606
Nb	11.831	+/-	4.663
Zr	1.000	+/-	24.366
Y	1.000	+/-	3.809
Sr	117.975	+/-	3.889
Rb	1.000	+/-	10.084
Th	1.000	+/-	239.605
Bi	1.000	+/-	246.824
Au	1.000	+/-	9.508
As	498.843	+/-	40.875
Se	1.000	+/-	4.778
Pb	3345.229	+/-	44.640
Hg	214.127	+/-	8.956
Zn	1.000	+/-	16.747
Cu	27304.094	+/-	252.688
Ni	1.000	+/-	21.675
Co	1.000	+/-	17.660
Fe	518.849	+/-	42.849
Mn	1.000	+/-	42.662
Cr	1.000	+/-	17.145
V	1.000	+/-	15.057
Ti	1.000	+/-	97.978
Ca	87249.578	+/-	657.380
K	1741.976	+/-	134.219
Al	1051.798	+/-	558.090
P	311.187	+/-	83.430
Si	4944.288	+/-	314.579
Cl	1275.516	+/-	33.015
S	5754.602	+/-	83.239
Mg	1.000	+/-	5790.837



mRFA -Ergebnisse

XL3t-69288

Reading No 9  
Mode Mining  
Time 2020-02-20 11:56  
Duration 120.87  
Units ppm  
Sigma Value 2  
Sequence Final  
Flags  
INV NR Gm1120  
OBJEKT TAFELGEMAELEN  
MATERIAL HOLZ METALL FASSUNG  
ANALYSESTELLE P9 SARKOPHAG AS  
MESSAUFBAU STATIV  
FILTER m30lo30hi30li30  
User Login Raquet



Ele	ppm	+/-	$\pm 2\sigma$
Ce	-339.000	+/-	76.942
La	1.000	+/-	35.195
Ba	1.000	+/-	38.667
Sb	19.741	+/-	14.048
Sn	44.832	+/-	8.158
Cd	15.474	+/-	5.568
Ag	7.799	+/-	3.670
Bal	841427.250	+/-	904.799
Nb	16.793	+/-	7.939
Zr	1.000	+/-	36.132
Y	1.000	+/-	6.855
Sr	125.855	+/-	4.581
Rb	1.000	+/-	17.059
Th	1.000	+/-	417.376
Bi	1.000	+/-	419.726
Au	1.000	+/-	13.530
As	2073.952	+/-	75.403
Se	1.000	+/-	10.952
Pb	9232.810	+/-	112.426
Hg	194.549	+/-	11.943
Zn	73.287	+/-	10.369
Cu	460.748	+/-	24.365
Ni	1.000	+/-	25.685
Co	1.000	+/-	96.036
Fe	50087.434	+/-	557.745
Mn	154.182	+/-	58.032
Cr	71.241	+/-	28.968
V	35.943	+/-	27.100
Ti	1.000	+/-	160.083
Ca	43601.859	+/-	510.960
K	3738.382	+/-	218.459
Al	2448.999	+/-	630.227
P	1398.174	+/-	113.601
Si	16552.471	+/-	504.757
Cl	950.892	+/-	30.197
S	15593.236	+/-	179.029
Mg	11674.036	+/-	6926.708