

mRFA -Ergebnisse

XL3t-69288

Reading No 3
Mode Mining
Time 2020-07-29 10:47
Duration 122.25
Units ppm
Sigma Value 2
Sequence Final
Flags
INV NR Gm311
OBJEKT TAFELGEMAELEN
MATERIAL HOLZ METALL FASSUNG
ANALYSESTELLE P1 HINTERGRUND
MESSAUFBAU STATIV
FILTER m30lo30hi30li30
User Login Raquet



Ele	ppm	+/-	$\pm 2\sigma$
Ce	-339.000	+/-	80.896
La	1.000	+/-	37.067
Ba	1.000	+/-	40.024
Sb	1.000	+/-	13.681
Sn	1.000	+/-	11.109
Cd	1.000	+/-	7.612
Ag	12.475	+/-	3.981
Bal	729988.813	+/-	1224.637
Nb	1.000	+/-	1.811
Zr	1.000	+/-	6.848
Y	1.000	+/-	1.260
Sr	325.214	+/-	5.890
Rb	19.693	+/-	4.908
Th	1.000	+/-	102.472
Bi	1.000	+/-	79.078
Au	3659.010	+/-	53.699
As	40.963	+/-	10.849
Se	1.000	+/-	6.251
Pb	197.885	+/-	9.212
Hg	1.000	+/-	6.103
Zn	90.622	+/-	13.418
Cu	85.913	+/-	13.591
Ni	1.000	+/-	21.859
Co	1.000	+/-	24.129
Fe	1767.078	+/-	69.054
Mn	1.000	+/-	51.399
Cr	95.725	+/-	20.296
V	1.000	+/-	20.016
Ti	203.535	+/-	87.382
Ca	193632.375	+/-	1047.514
K	1064.834	+/-	139.830
Al	2945.471	+/-	1036.587
P	37536.387	+/-	411.724
Si	17212.352	+/-	724.359
Cl	454.761	+/-	32.428
S	10666.983	+/-	129.986
Mg	1.000	+/-	9845.140

mRFA -Ergebnisse

XL3t-69288

Reading No 4
Mode Mining
Time 2020-07-29 10:51
Duration 122.17
Units ppm
Sigma Value 2
Sequence Final
Flags
INV NR Gm311
OBJEKT TAFELGEMAELEN
MATERIAL HOLZ METALL FASSUNG
ANALYSESTELLE P2 HINTERGRUND UEBERVREGOLDUNG
MESSAUFBAU STATIV
FILTER m30lo30hi30li30
User Login Raquet



Ele	ppm	+/-	$\pm 2\sigma$
Ce	-339.000	+/-	83.527
La	1.000	+/-	38.275
Ba	1.000	+/-	41.177
Sb	1.000	+/-	13.980
Sn	1.000	+/-	8.206
Cd	5.785	+/-	5.606
Ag	56.475	+/-	5.412
Bal	846446.813	+/-	844.558
Nb	1.000	+/-	2.956
Zr	1.000	+/-	11.840
Y	1.000	+/-	2.424
Sr	315.196	+/-	6.405
Rb	40.100	+/-	7.861
Th	1.000	+/-	175.229
Bi	1.000	+/-	166.741
Au	7106.395	+/-	87.488
As	424.199	+/-	25.637
Se	1.000	+/-	9.506
Pb	1036.242	+/-	22.314
Hg	1.000	+/-	6.853
Zn	155.892	+/-	18.648
Cu	297.886	+/-	19.878
Ni	1.000	+/-	24.667
Co	1.000	+/-	33.982
Fe	4103.107	+/-	107.593
Mn	1.000	+/-	60.767
Cr	112.008	+/-	23.497
V	1.000	+/-	34.088
Ti	735.362	+/-	152.870
Ca	67505.914	+/-	546.328
K	1926.743	+/-	136.115
Al	3312.770	+/-	664.653
P	39999.684	+/-	402.363
Si	11023.662	+/-	522.275
Cl	1324.594	+/-	34.631
S	14071.234	+/-	145.011
Mg	1.000	+/-	6132.284

mRFA -Ergebnisse

XL3t-69288

Reading No 5
Mode Mining
Time 2020-07-29 10:56
Duration 121.80
Units ppm
Sigma Value 2
Sequence Final
Flags
INV NR Gm311
OBJEKT TAFELGEMAELEN
MATERIAL HOLZ METALL FASSUNG
ANALYSESTELLE P3 UEBERVERGOLDUNG
MESSAUFBAU STATIV
FILTER m30lo30hi30li30
User Login Raquet



Ele	ppm	+/-	$\pm 2\sigma$
Ce	-339.000	+/-	57.996
La	1.000	+/-	26.806
Ba	1.000	+/-	28.936
Sb	11.946	+/-	10.958
Sn	10.458	+/-	6.007
Cd	19.785	+/-	4.589
Ag	57.600	+/-	4.578
Bal	814589.063	+/-	858.863
Nb	13.055	+/-	2.804
Zr	1.000	+/-	12.904
Y	1.000	+/-	1.717
Sr	66.443	+/-	2.423
Rb	14.039	+/-	4.580
Th	1.000	+/-	128.463
Bi	1.000	+/-	110.506
Au	1871.143	+/-	33.319
As	363.562	+/-	20.748
Se	1.000	+/-	4.516
Pb	1015.730	+/-	17.945
Hg	1.000	+/-	3.333
Zn	200.664	+/-	12.645
Cu	904.618	+/-	25.482
Ni	1.000	+/-	17.964
Co	1.000	+/-	22.924
Fe	2557.584	+/-	72.469
Mn	1.000	+/-	43.918
Cr	71.005	+/-	17.616
V	1.000	+/-	27.545
Ti	443.213	+/-	115.642
Ca	69969.906	+/-	482.866
K	1935.334	+/-	121.301
Al	9505.416	+/-	929.851
P	40522.238	+/-	399.054
Si	32458.246	+/-	767.794
Cl	531.137	+/-	28.158
S	14396.881	+/-	143.148
Mg	8470.883	+/-	7597.365

mRFA -Ergebnisse

XL3t-69288

Reading No 6
Mode Mining
Time 2020-07-29 11:00
Duration 121.86
Units ppm
Sigma Value 2
Sequence Final
Flags
INV NR Gm311
OBJEKT TAFELGEMAELENDE
MATERIAL HOLZ METALL FASSUNG
ANALYSESTELLE P4 SCHWERT
MESSAUFBAU STATIV
FILTER m30lo30hi30li30
User Login Raquet

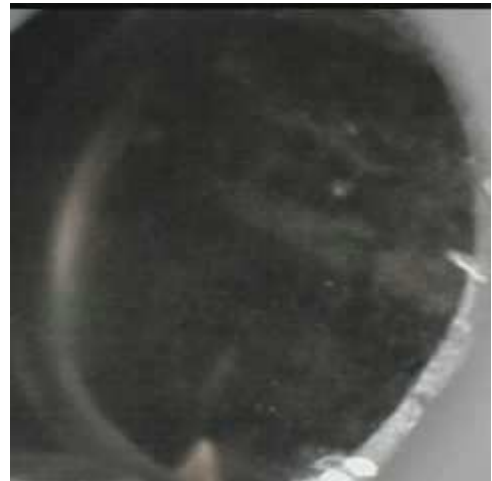


Ele	ppm	+/-	$\pm 2\sigma$
Ce	-339.000	+/-	141.893
La	1.000	+/-	65.047
Ba	1.000	+/-	69.364
Sb	1.000	+/-	34.956
Sn	386.342	+/-	23.730
Cd	1.000	+/-	9.450
Ag	553.633	+/-	21.349
Bal	843991.938	+/-	1317.541
Nb	28.445	+/-	18.339
Zr	1.000	+/-	66.793
Y	1.000	+/-	16.130
Sr	301.918	+/-	10.522
Rb	36.445	+/-	31.248
Th	1.000	+/-	918.838
Bi	1.000	+/-	929.041
Au	3455.240	+/-	96.161
As	6327.952	+/-	183.073
Se	1.000	+/-	18.721
Pb	21386.723	+/-	358.512
Hg	1.000	+/-	15.565
Zn	545.432	+/-	42.040
Cu	54672.934	+/-	781.679
Ni	1.000	+/-	35.746
Co	1.000	+/-	30.538
Fe	855.219	+/-	68.342
Mn	1.000	+/-	71.668
Cr	1.000	+/-	25.403
V	1.000	+/-	21.460
Ti	1.000	+/-	135.201
Ca	22981.680	+/-	388.664
K	2167.240	+/-	208.480
Al	1676.738	+/-	748.284
P	4836.465	+/-	173.779
Si	10955.177	+/-	476.694
Cl	3612.473	+/-	72.205
S	21228.063	+/-	324.578
Mg	1.000	+/-	8282.433

mRFA -Ergebnisse

XL3t-69288

Reading No 7
Mode Mining
Time 2020-07-29 11:04
Duration 120.94
Units ppm
Sigma Value 2
Sequence Final
Flags
INV NR Gm311
OBJEKT TAFELGEMAELEN
MATERIAL HOLZ METALL FASSUNG
ANALYSESTELLE P5 SCHWERT
MESSAUFBAU STATIV
FILTER m30lo30hi30li30
User Login Raquet



Ele	ppm	+/-	$\pm 2\sigma$
Ce	-339.000	+/-	145.163
La	1.000	+/-	66.271
Ba	1.000	+/-	70.771
Sb	47.322	+/-	24.955
Sn	1095.430	+/-	36.396
Cd	19.400	+/-	9.787
Ag	632.608	+/-	22.875
Bal	829103.250	+/-	1510.064
Nb	33.938	+/-	22.018
Zr	1.000	+/-	76.518
Y	1.000	+/-	19.390
Sr	289.404	+/-	10.980
Rb	1.000	+/-	53.967
Th	1.000	+/-	1079.534
Bi	1.000	+/-	1008.632
Au	2673.190	+/-	87.638
As	7218.299	+/-	213.730
Se	1.000	+/-	18.036
Pb	28007.945	+/-	480.250
Hg	1.000	+/-	17.321
Zn	565.035	+/-	43.798
Cu	57420.820	+/-	834.110
Ni	1.000	+/-	37.493
Co	1.000	+/-	30.574
Fe	861.345	+/-	70.809
Mn	1.000	+/-	88.383
Cr	1.000	+/-	25.025
V	1.000	+/-	21.715
Ti	1.000	+/-	119.260
Ca	24557.768	+/-	410.244
K	2344.871	+/-	208.008
Al	2631.567	+/-	761.571
P	5038.658	+/-	173.552
Si	11726.970	+/-	478.878
Cl	3757.001	+/-	74.165
S	21975.154	+/-	339.882
Mg	1.000	+/-	8302.063

mRFA -Ergebnisse

XL3t-69288

Reading No 8
Mode Mining
Time 2020-07-29 11:08
Duration 120.73
Units ppm
Sigma Value 2
Sequence Final
Flags
INV NR Gm311
OBJEKT TAFELGEMAELEN
MATERIAL HOLZ METALL FASSUNG
ANALYSESTELLE P6 RUESTUNG
MESSAUFBAU STATIV
FILTER m30lo30hi30li30
User Login Raquet

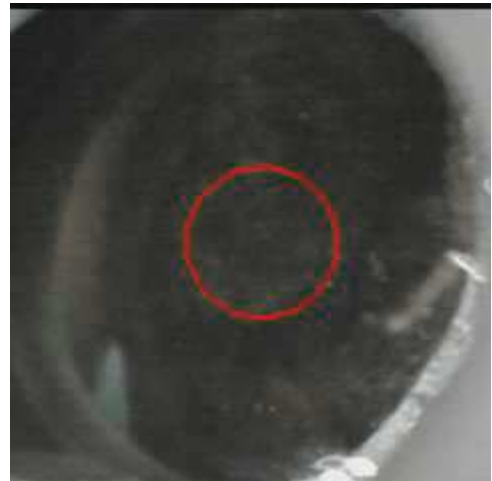


Ele	ppm	+/-	$\pm 2\sigma$
Ce	-339.000	+/-	147.189
La	1.000	+/-	67.586
Ba	1.000	+/-	71.707
Sb	1.000	+/-	23.013
Sn	1902.602	+/-	44.193
Cd	10.040	+/-	9.452
Ag	15.172	+/-	6.434
Bal	903019.125	+/-	830.173
Nb	34.909	+/-	20.896
Zr	1.000	+/-	70.272
Y	1.000	+/-	17.796
Sr	238.099	+/-	9.044
Rb	1.000	+/-	50.870
Th	1.000	+/-	978.494
Bi	1.000	+/-	881.048
Au	2007.182	+/-	67.240
As	7956.460	+/-	201.468
Se	1.000	+/-	19.400
Pb	29764.932	+/-	474.375
Hg	1.000	+/-	14.125
Zn	144.634	+/-	16.606
Cu	309.812	+/-	26.668
Ni	1.000	+/-	34.950
Co	1.000	+/-	44.685
Fe	189.335	+/-	55.678
Mn	1.000	+/-	107.670
Cr	35.094	+/-	20.964
V	1.000	+/-	15.582
Ti	1.000	+/-	82.058
Ca	11315.847	+/-	259.721
K	1431.648	+/-	152.372
Al	1638.045	+/-	591.683
P	6985.657	+/-	209.044
Si	7765.217	+/-	415.693
Cl	2457.984	+/-	61.118
S	22778.252	+/-	416.236
Mg	1.000	+/-	5786.594

mRFA -Ergebnisse

XL3t-69288

Reading No 9
Mode Mining
Time 2020-07-29 11:12
Duration 121.53
Units ppm
Sigma Value 2
Sequence Final
Flags 3mm
INV NR Gm311
OBJEKT TAFELGEMAELENDE
MATERIAL HOLZ METALL FASSUNG
ANALYSESTELLE P7 SATTEL
MESSAUFBAU STATIV
FILTER m30lo30hi30li30
User Login Raquet

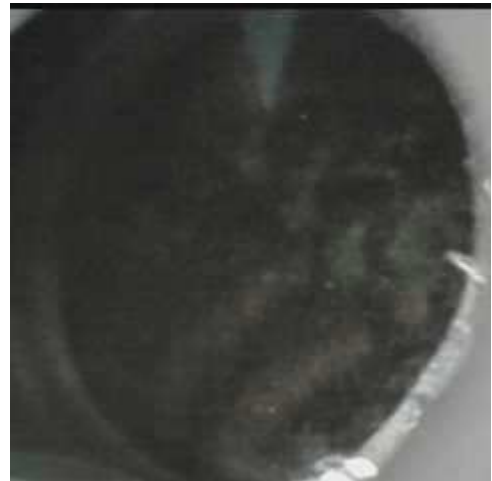


Ele	ppm	+/-	$\pm 2\sigma$
Ce	1.000	+/-	191.620
La	1.000	+/-	155.714
Ba	1.000	+/-	163.357
Sb	208.006	+/-	65.625
Sn	1386.212	+/-	96.974
Cd	1.000	+/-	35.297
Ag	598.768	+/-	46.417
Bal	839363.125	+/-	2158.284
Nb	37.288	+/-	36.427
Zr	1.000	+/-	122.963
Y	1.000	+/-	31.834
Sr	268.719	+/-	16.116
Rb	1.000	+/-	68.661
Th	1.000	+/-	1656.307
Bi	1.000	+/-	1435.420
Au	259.715	+/-	69.798
As	7805.479	+/-	318.550
Se	1.000	+/-	32.165
Pb	36326.711	+/-	888.015
Hg	1.000	+/-	27.463
Zn	393.698	+/-	54.787
Cu	41828.230	+/-	932.755
Ni	1.000	+/-	50.323
Co	1.000	+/-	53.168
Fe	1262.412	+/-	128.113
Mn	1.000	+/-	139.436
Cr	1.000	+/-	37.853
V	1.000	+/-	28.197
Ti	1.000	+/-	152.648
Ca	21655.035	+/-	563.984
K	2787.855	+/-	296.980
Al	3524.704	+/-	987.547
P	2515.940	+/-	195.799
Si	11958.063	+/-	686.632
Cl	5026.570	+/-	149.212
S	22793.506	+/-	523.181
Mg	1.000	+/-	13613.439

mRFA -Ergebnisse

XL3t-69288

Reading No 10
Mode Mining
Time 2020-07-29 11:16
Duration 122.20
Units ppm
Sigma Value 2
Sequence Final
Flags
INV NR Gm311
OBJEKT TAFELGEMAELEN
MATERIAL HOLZ METALL FASSUNG
ANALYSESTELLE P8 DRACHE
MESSAUFBAU STATIV
FILTER m30lo30hi30li30
User Login Raquet



Ele	ppm	+/-	$\pm 2\sigma$
Ce	-339.000	+/-	103.994
La	1.000	+/-	47.653
Ba	1.000	+/-	51.072
Sb	1.000	+/-	16.972
Sn	875.911	+/-	24.231
Cd	15.494	+/-	7.081
Ag	688.409	+/-	17.722
Bal	892627.313	+/-	742.038
Nb	23.726	+/-	13.300
Zr	1.000	+/-	46.445
Y	1.000	+/-	11.200
Sr	245.020	+/-	7.301
Rb	1.000	+/-	22.968
Th	1.000	+/-	666.793
Bi	1.000	+/-	626.559
Au	1.000	+/-	16.484
As	5033.612	+/-	131.360
Se	1.000	+/-	17.186
Pb	18647.176	+/-	262.718
Hg	1.000	+/-	9.228
Zn	64.610	+/-	9.281
Cu	616.974	+/-	30.299
Ni	1.000	+/-	29.703
Co	1.000	+/-	24.429
Fe	422.968	+/-	54.679
Mn	1.000	+/-	64.192
Cr	1.000	+/-	22.992
V	1.000	+/-	14.212
Ti	1.000	+/-	74.811
Ca	38848.016	+/-	573.770
K	1886.255	+/-	176.708
Al	2190.618	+/-	628.790
P	1861.373	+/-	133.842
Si	11780.375	+/-	472.663
Cl	3358.656	+/-	67.863
S	20813.486	+/-	320.423
Mg	1.000	+/-	10234.106

mRFA -Ergebnisse

XL3t-69288

Reading No 11
Mode Mining
Time 2020-07-29 11:21
Duration 120.46
Units ppm
Sigma Value 2
Sequence Final
Flags
INV NR Gm311
OBJEKT TAFELGEMAELEN
MATERIAL HOLZ METALL FASSUNG
ANALYSESTELLE P9 NIMBUS
MESSAUFBAU STATIV
FILTER m30lo30hi30li30
User Login Raquet



Ele	ppm	+/-	$\pm 2\sigma$
Ce	-339.000	+/-	124.104
La	1.000	+/-	57.036
Ba	1.000	+/-	60.731
Sb	1.000	+/-	33.711
Sn	648.492	+/-	23.049
Cd	19.222	+/-	8.379
Ag	9.564	+/-	5.445
Bal	892818.063	+/-	791.073
Nb	24.762	+/-	14.433
Zr	1.000	+/-	52.867
Y	1.000	+/-	12.377
Sr	211.209	+/-	7.339
Rb	1.000	+/-	27.498
Th	1.000	+/-	726.524
Bi	1.000	+/-	783.515
Au	1097.781	+/-	45.616
As	4440.044	+/-	136.942
Se	1.000	+/-	17.478
Pb	18794.930	+/-	284.008
Hg	1.000	+/-	10.413
Zn	50.666	+/-	21.932
Cu	22915.125	+/-	361.491
Ni	1.000	+/-	31.413
Co	1.000	+/-	47.191
Fe	6708.425	+/-	169.298
Mn	1.000	+/-	98.531
Cr	1.000	+/-	36.590
V	1.000	+/-	18.930
Ti	200.705	+/-	103.069
Ca	21945.754	+/-	363.119
K	1709.826	+/-	152.086
Al	1285.255	+/-	573.778
P	7205.562	+/-	187.647
Si	6121.791	+/-	368.909
Cl	2282.315	+/-	51.740
S	11510.467	+/-	189.265
Mg	1.000	+/-	6511.061

mRFA -Ergebnisse

XL3t-69288

Reading No 12
Mode Mining
Time 2020-07-29 11:25
Duration 121.52
Units ppm
Sigma Value 2
Sequence Final
Flags
INV NR Gm311
OBJEKT TAFELGEMAELEN
MATERIAL HOLZ METALL FASSUNG
ANALYSESTELLE P10 SCHLIESSE
MESSAUFBAU STATIV
FILTER m30lo30hi30li30
User Login Raquet



Ele	ppm	+/-	$\pm 2\sigma$
Ce	-339.000	+/-	184.744
La	1.000	+/-	84.540
Ba	1.000	+/-	99.586
Sb	149.517	+/-	32.980
Sn	615.259	+/-	30.943
Cd	1.000	+/-	10.413
Ag	302.723	+/-	17.672
Bal	868269.125	+/-	1370.192
Nb	64.632	+/-	32.043
Zr	1.000	+/-	105.942
Y	1.000	+/-	26.771
Sr	112.255	+/-	9.876
Rb	1.000	+/-	52.204
Th	1.000	+/-	1456.592
Bi	1.000	+/-	1132.571
Au	63.303	+/-	52.133
As	6993.082	+/-	257.841
Se	1.000	+/-	19.164
Pb	44543.602	+/-	812.655
Hg	647.795	+/-	36.742
Zn	263.614	+/-	38.097
Cu	40777.367	+/-	681.230
Ni	1.000	+/-	41.362
Co	1.000	+/-	51.286
Fe	1290.658	+/-	91.546
Mn	1.000	+/-	118.694
Cr	1.000	+/-	23.319
V	1.000	+/-	18.895
Ti	1.000	+/-	97.348
Ca	14661.335	+/-	306.460
K	1919.441	+/-	177.151
Al	1.000	+/-	798.339
P	1776.752	+/-	98.100
Si	5771.908	+/-	306.977
Cl	2413.048	+/-	55.962
S	9364.555	+/-	178.062
Mg	1.000	+/-	5961.064

mRFA -Ergebnisse

XL3t-69288

Reading No 13
Mode Mining
Time 2020-07-29 11:36
Duration 120.01
Units ppm
Sigma Value 2
Sequence Final
Flags
INV NR Gm311
OBJEKT TAFELGEMAELEN
MATERIAL HOLZ METALL FASSUNG
ANALYSESTELLE P11 GUERTEL
MESSAUFBAU STATIV
FILTER m30lo30hi30li30
User Login Raquet

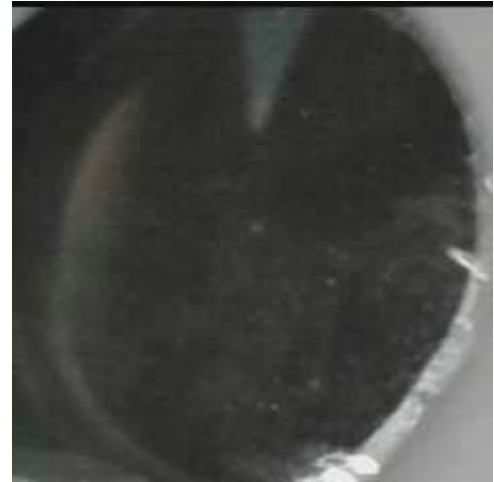


Ele	ppm	+/-	$\pm 2\sigma$
Ce	-339.000	+/-	114.743
La	1.000	+/-	52.560
Ba	1.000	+/-	56.180
Sb	1.000	+/-	23.035
Sn	259.184	+/-	15.779
Cd	1.000	+/-	10.844
Ag	8.083	+/-	5.114
Bal	887201.813	+/-	775.059
Nb	11.841	+/-	11.199
Zr	1.000	+/-	39.924
Y	1.000	+/-	9.692
Sr	205.555	+/-	7.954
Rb	1.000	+/-	18.504
Th	1.000	+/-	575.811
Bi	1.000	+/-	538.904
Au	1.000	+/-	33.875
As	3848.065	+/-	110.085
Se	1.000	+/-	15.661
Pb	13290.238	+/-	184.690
Hg	2522.640	+/-	45.270
Zn	265.757	+/-	22.231
Cu	930.928	+/-	37.693
Ni	1.000	+/-	31.344
Co	1.000	+/-	58.439
Fe	10803.743	+/-	231.454
Mn	183.300	+/-	73.478
Cr	41.377	+/-	23.750
V	1.000	+/-	34.002
Ti	271.769	+/-	144.918
Ca	44281.555	+/-	593.035
K	3170.827	+/-	173.819
Al	2021.744	+/-	608.496
P	908.732	+/-	108.089
Si	15306.834	+/-	520.905
Cl	2383.520	+/-	51.573
S	12082.493	+/-	183.315
Mg	1.000	+/-	6354.883

mRFA -Ergebnisse

XL3t-69288

Reading No 14
Mode Mining
Time 2020-07-29 11:40
Duration 120.92
Units ppm
Sigma Value 2
Sequence Final
Flags
INV NR Gm311
OBJEKT TAFELGEMAELEN
MATERIAL HOLZ METALL FASSUNG
ANALYSESTELLE P12 GUERTELSCHLIESSE
MESSAUFBAU STATIV
FILTER m30lo30hi30li30
User Login Raquet

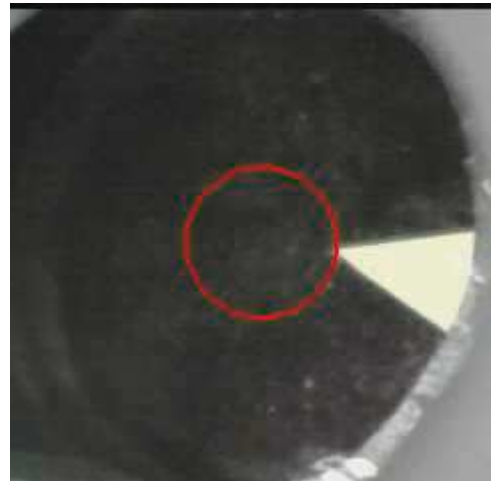


Ele	ppm	+/-	$\pm 2\sigma$
Ce	-339.000	+/-	117.363
La	1.000	+/-	53.997
Ba	1.000	+/-	57.427
Sb	1.000	+/-	25.308
Sn	439.900	+/-	18.827
Cd	1.000	+/-	11.945
Ag	67.024	+/-	7.233
Bal	887567.000	+/-	825.445
Nb	18.215	+/-	13.855
Zr	1.000	+/-	48.706
Y	1.000	+/-	11.865
Sr	197.801	+/-	8.780
Rb	1.000	+/-	22.628
Th	1.000	+/-	696.399
Bi	1.000	+/-	661.297
Au	1.000	+/-	40.472
As	4935.280	+/-	135.531
Se	1.000	+/-	18.689
Pb	17448.709	+/-	258.417
Hg	3039.520	+/-	55.662
Zn	317.182	+/-	24.988
Cu	775.175	+/-	36.047
Ni	1.000	+/-	31.975
Co	1.000	+/-	52.953
Fe	7733.109	+/-	199.466
Mn	1.000	+/-	113.026
Cr	1.000	+/-	25.253
V	1.000	+/-	29.038
Ti	1.000	+/-	149.123
Ca	40030.598	+/-	590.639
K	2369.590	+/-	161.998
Al	2267.147	+/-	588.839
P	1680.358	+/-	117.484
Si	14239.579	+/-	497.926
Cl	2487.217	+/-	53.893
S	14386.595	+/-	228.330
Mg	1.000	+/-	5652.791

mRFA -Ergebnisse

XL3t-69288

Reading No 15
Mode Mining
Time 2020-07-29 11:45
Duration 121.55
Units ppm
Sigma Value 2
Sequence Final
Flags 3mm
INV NR Gm311
OBJEKT TAFELGEMAELENDE
MATERIAL HOLZ METALL FASSUNG
ANALYSESTELLE P13 GUERTELSCHLIESSE
MESSAUFBAU STATIV
FILTER m30lo30hi30li30
User Login Raquet

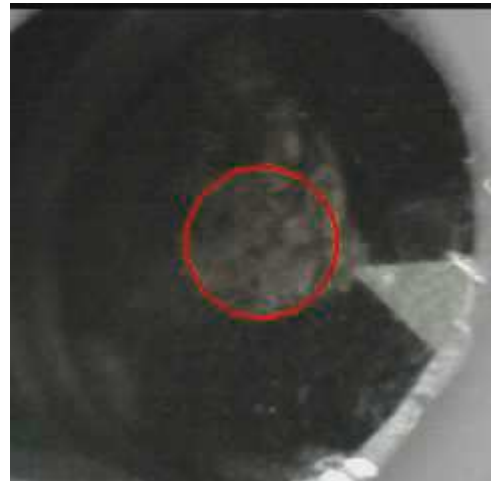


Ele	ppm	+/-	$\pm 2\sigma$
Ce	1.000	+/-	157.334
La	1.000	+/-	136.805
Ba	1.000	+/-	137.708
Sb	1.000	+/-	67.687
Sn	560.845	+/-	54.296
Cd	1.000	+/-	16.461
Ag	271.256	+/-	26.546
Bal	880802.063	+/-	1319.488
Nb	26.036	+/-	23.051
Zr	1.000	+/-	79.595
Y	1.000	+/-	20.072
Sr	199.569	+/-	13.019
Rb	1.000	+/-	38.582
Th	1.000	+/-	1085.408
Bi	1.000	+/-	1122.894
Au	104.444	+/-	65.281
As	5591.208	+/-	209.539
Se	23.163	+/-	17.446
Pb	23025.160	+/-	494.009
Hg	2115.884	+/-	67.453
Zn	328.237	+/-	35.494
Cu	891.246	+/-	57.217
Ni	1.000	+/-	51.806
Co	1.000	+/-	91.573
Fe	9889.071	+/-	349.206
Mn	1.000	+/-	145.658
Cr	1.000	+/-	56.439
V	1.000	+/-	28.452
Ti	243.419	+/-	127.470
Ca	23866.352	+/-	573.666
K	2979.299	+/-	266.627
Al	2596.586	+/-	766.759
P	3894.129	+/-	204.373
Si	17982.158	+/-	796.888
Cl	4895.504	+/-	138.903
S	19714.303	+/-	449.712
Mg	1.000	+/-	12490.162

mRFA -Ergebnisse

XL3t-69288

Reading No 16
Mode Mining
Time 2020-07-29 11:49
Duration 121.68
Units ppm
Sigma Value 2
Sequence Final
Flags 3mm
INV NR Gm311
OBJEKT TAFELGEMAELEN
MATERIAL HOLZ METALL FASSUNG
ANALYSESTELLE P14 SCHLIESSE JOSEF
MESSAUFBAU STATIV
FILTER m30lo30hi30li30
User Login Raquet

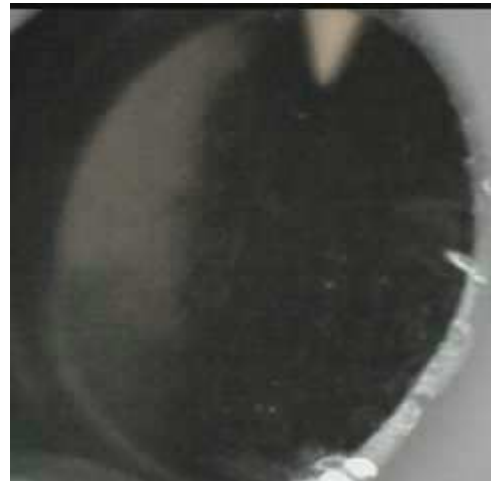


Ele	ppm	+/-	$\pm 2\sigma$
Ce	1.000	+/-	185.576
La	1.000	+/-	149.907
Ba	1.000	+/-	156.801
Sb	368.457	+/-	66.467
Sn	674.559	+/-	64.771
Cd	1.000	+/-	18.686
Ag	477.299	+/-	36.899
Bal	823606.063	+/-	2053.976
Nb	1.000	+/-	29.841
Zr	1.000	+/-	93.621
Y	1.000	+/-	23.654
Sr	173.781	+/-	11.676
Rb	1.000	+/-	61.968
Th	1.000	+/-	1379.308
Bi	1.000	+/-	1065.923
Au	731.764	+/-	69.257
As	3727.494	+/-	215.295
Se	1.000	+/-	21.723
Pb	24710.309	+/-	554.759
Hg	1.000	+/-	22.483
Zn	425.264	+/-	62.377
Cu	86517.742	+/-	1487.455
Ni	1.000	+/-	62.570
Co	1.000	+/-	46.134
Fe	1497.897	+/-	111.179
Mn	104.737	+/-	87.467
Cr	1.000	+/-	31.722
V	1.000	+/-	24.976
Ti	1.000	+/-	141.572
Ca	16701.436	+/-	388.269
K	2867.530	+/-	254.944
Al	2671.082	+/-	826.190
P	5023.525	+/-	197.685
Si	10432.679	+/-	568.373
Cl	5402.538	+/-	129.925
S	13885.846	+/-	274.695
Mg	1.000	+/-	7736.736

mRFA -Ergebnisse

XL3t-69288

Reading No 17
Mode Mining
Time 2020-07-29 11:53
Duration 122.77
Units ppm
Sigma Value 2
Sequence Final
Flags
INV NR Gm311
OBJEKT TAFELGEMAELEN
MATERIAL HOLZ METALL FASSUNG
ANALYSESTELLE P15 AERMEL JOSEF
MESSAUFBAU STATIV
FILTER m30lo30hi30li30
User Login Raquet

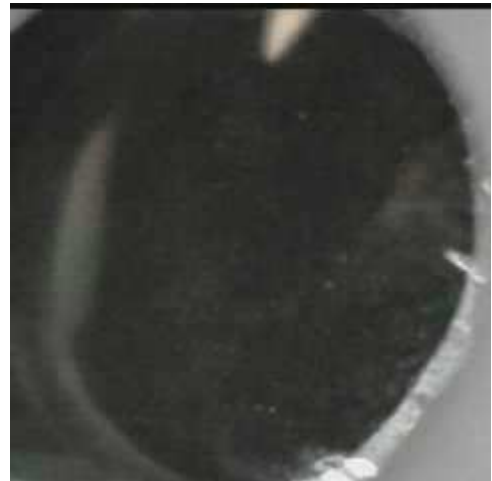


Ele	ppm	+/-	$\pm 2\sigma$
Ce	-339.000	+/-	126.111
La	1.000	+/-	57.583
Ba	1.000	+/-	61.276
Sb	1.000	+/-	20.072
Sn	1105.369	+/-	30.481
Cd	18.506	+/-	8.444
Ag	722.150	+/-	20.352
Bal	918028.125	+/-	651.042
Nb	23.707	+/-	16.191
Zr	1.000	+/-	56.260
Y	1.000	+/-	13.681
Sr	197.128	+/-	7.355
Rb	1.000	+/-	32.397
Th	1.000	+/-	796.978
Bi	1.000	+/-	752.302
Au	431.767	+/-	35.142
As	5278.042	+/-	152.842
Se	1.000	+/-	13.348
Pb	21876.229	+/-	335.628
Hg	1.000	+/-	10.997
Zn	36.319	+/-	16.851
Cu	11612.201	+/-	211.236
Ni	1.000	+/-	32.499
Co	1.000	+/-	24.886
Fe	244.821	+/-	51.532
Mn	1.000	+/-	84.788
Cr	1.000	+/-	18.484
V	1.000	+/-	13.537
Ti	1.000	+/-	70.525
Ca	20560.447	+/-	353.138
K	2142.924	+/-	164.395
Al	1180.914	+/-	481.899
P	1277.865	+/-	89.687
Si	5058.309	+/-	297.331
Cl	3197.139	+/-	64.988
S	7008.054	+/-	130.474
Mg	1.000	+/-	5196.536

mRFA -Ergebnisse

XL3t-69288

Reading No 18
Mode Mining
Time 2020-07-29 11:57
Duration 120.26
Units ppm
Sigma Value 2
Sequence Final
Flags
INV NR Gm311
OBJEKT TAFELGEMAELEN
MATERIAL HOLZ METALL FASSUNG
ANALYSESTELLE P16 AERMEL JACOBI
MESSAUFBAU STATIV
FILTER m30lo30hi30li30
User Login Raquet



Ele	ppm	+/-	$\pm 2\sigma$
Ce	-339.000	+/-	127.034
La	1.000	+/-	57.989
Ba	1.000	+/-	62.175
Sb	1.000	+/-	20.335
Sn	1852.156	+/-	42.179
Cd	20.801	+/-	8.723
Ag	22.526	+/-	6.070
Bal	902851.813	+/-	843.247
Nb	37.410	+/-	20.914
Zr	1.000	+/-	71.121
Y	1.000	+/-	17.909
Sr	199.608	+/-	8.442
Rb	1.000	+/-	51.310
Th	1.000	+/-	993.560
Bi	1.000	+/-	908.637
Au	2289.387	+/-	72.966
As	6935.440	+/-	193.919
Se	1.000	+/-	15.361
Pb	29143.896	+/-	468.705
Hg	1.000	+/-	14.508
Zn	78.087	+/-	23.693
Cu	19254.932	+/-	326.993
Ni	1.000	+/-	35.526
Co	1.000	+/-	27.138
Fe	305.816	+/-	56.084
Mn	79.827	+/-	69.590
Cr	1.000	+/-	36.146
V	1.000	+/-	17.851
Ti	1.000	+/-	92.517
Ca	12871.373	+/-	269.680
K	2347.674	+/-	167.776
Al	1443.792	+/-	465.071
P	2377.414	+/-	101.321
Si	6894.592	+/-	320.991
Cl	3322.870	+/-	66.503
S	7670.655	+/-	141.306
Mg	1.000	+/-	4967.122

mRFA -Ergebnisse

XL3t-69288

Reading No 19
Mode Mining
Time 2020-07-29 12:03
Duration 120.41
Units ppm
Sigma Value 2
Sequence Final
Flags 3mm
INV NR Gm311
OBJEKT TAFELGEMAELENDE
MATERIAL HOLZ METALL FASSUNG
ANALYSESTELLE P17 HAUBE
MESSAUFBAU STATIV
FILTER m30lo30hi30li30
User Login Raquet

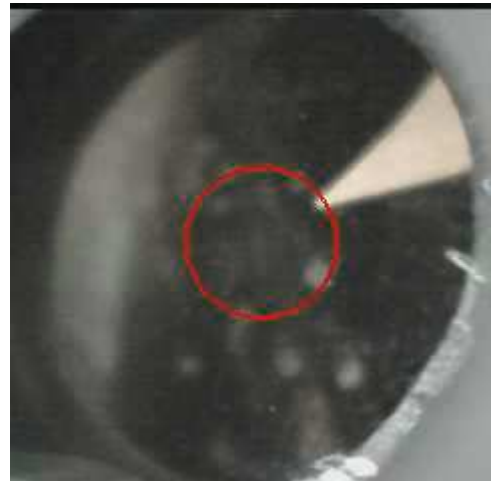


Ele	ppm	+/-	$\pm 2\sigma$
Ce	1.000	+/-	174.121
La	1.000	+/-	142.363
Ba	1.000	+/-	148.669
Sb	1.000	+/-	78.094
Sn	1647.255	+/-	93.152
Cd	1.000	+/-	30.556
Ag	1.000	+/-	19.677
Bal	890180.500	+/-	1324.932
Nb	37.001	+/-	28.516
Zr	1.000	+/-	95.964
Y	1.000	+/-	23.954
Sr	189.730	+/-	11.756
Rb	1.000	+/-	72.580
Th	1.000	+/-	1293.873
Bi	1.000	+/-	1088.594
Au	2299.829	+/-	104.684
As	6351.398	+/-	241.948
Se	1.000	+/-	20.010
Pb	29105.045	+/-	634.658
Hg	1.000	+/-	22.117
Zn	175.599	+/-	26.550
Cu	721.776	+/-	53.502
Ni	1.000	+/-	43.792
Co	1.000	+/-	45.922
Fe	758.765	+/-	108.671
Mn	1.000	+/-	118.269
Cr	67.666	+/-	36.060
V	1.000	+/-	31.027
Ti	1.000	+/-	144.619
Ca	20185.592	+/-	542.410
K	3584.852	+/-	276.450
Al	2149.996	+/-	785.889
P	6177.473	+/-	263.469
Si	14175.657	+/-	768.778
Cl	4926.819	+/-	150.550
S	17264.996	+/-	425.687
Mg	1.000	+/-	7368.429

mRFA -Ergebnisse

XL3t-69288

Reading No 20
Mode Mining
Time 2020-07-29 12:07
Duration 120.23
Units ppm
Sigma Value 2
Sequence Final
Flags 3mm
INV NR Gm311
OBJEKT TAFELGEMAELEN
MATERIAL HOLZ METALL FASSUNG
ANALYSESTELLE P18 KRAGEN MAGDA
MESSAUFBAU STATIV
FILTER m30lo30hi30li30
User Login Raquet

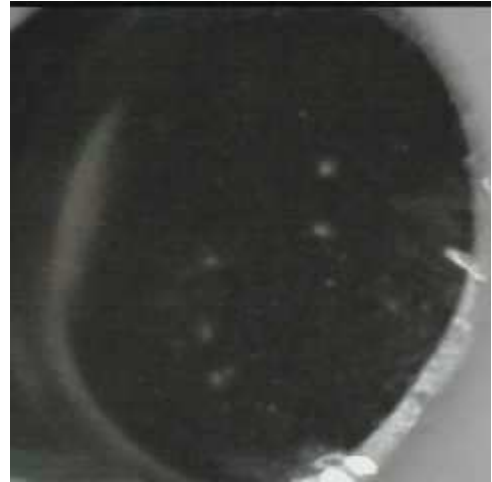


Ele	ppm	+/-	$\pm 2\sigma$
Ce	1.000	+/-	148.138
La	1.000	+/-	120.720
Ba	1.000	+/-	127.363
Sb	99.702	+/-	48.326
Sn	198.962	+/-	40.621
Cd	1.000	+/-	16.546
Ag	254.422	+/-	25.970
Bal	864954.938	+/-	1449.188
Nb	1.000	+/-	15.558
Zr	1.000	+/-	59.079
Y	1.000	+/-	14.270
Sr	172.133	+/-	10.158
Rb	1.000	+/-	35.207
Th	1.000	+/-	847.444
Bi	1.000	+/-	684.342
Au	131.515	+/-	41.395
As	2489.883	+/-	142.268
Se	1.000	+/-	17.343
Pb	11385.826	+/-	245.021
Hg	73.414	+/-	22.821
Zn	416.963	+/-	54.605
Cu	60195.414	+/-	995.487
Ni	1.000	+/-	40.432
Co	1.000	+/-	44.686
Fe	1387.451	+/-	109.478
Mn	1.000	+/-	83.542
Cr	1.000	+/-	28.090
V	1.000	+/-	24.628
Ti	1.000	+/-	146.924
Ca	32992.953	+/-	582.079
K	2205.746	+/-	205.539
Al	1630.976	+/-	681.017
P	1513.112	+/-	125.846
Si	9649.125	+/-	536.984
Cl	2461.618	+/-	74.972
S	7785.888	+/-	159.088
Mg	1.000	+/-	6757.611

mRFA -Ergebnisse

XL3t-69288

Reading No 21
Mode Mining
Time 2020-07-29 12:12
Duration 121.40
Units ppm
Sigma Value 2
Sequence Final
Flags
INV NR Gm311
OBJEKT TAFELGEMAELEN
MATERIAL HOLZ METALL FASSUNG
ANALYSESTELLE P19 AERMEL MAGDA
MESSAUFBAU STATIV
FILTER m30lo30hi30li30
User Login Raquet

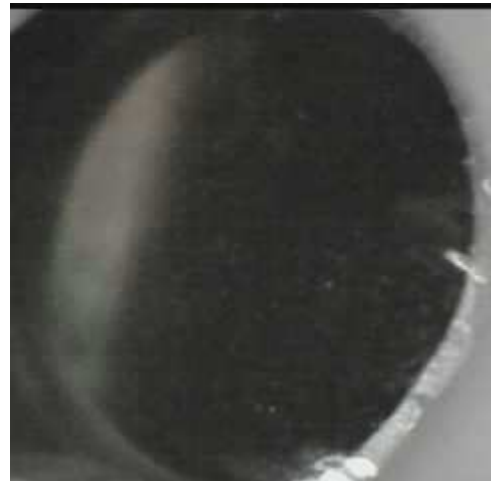


Ele	ppm	+/-	$\pm 2\sigma$
Ce	-339.000	+/-	113.833
La	1.000	+/-	52.388
Ba	1.000	+/-	55.679
Sb	1.000	+/-	18.529
Sn	1328.410	+/-	31.778
Cd	17.008	+/-	7.784
Ag	481.831	+/-	15.787
Bal	917613.063	+/-	639.002
Nb	25.488	+/-	15.971
Zr	1.000	+/-	55.417
Y	1.000	+/-	13.475
Sr	163.483	+/-	6.610
Rb	1.000	+/-	28.822
Th	1.000	+/-	784.846
Bi	1.000	+/-	707.872
Au	1.000	+/-	19.425
As	5265.918	+/-	149.986
Se	1.000	+/-	15.330
Pb	22346.367	+/-	333.048
Hg	1.000	+/-	11.012
Zn	1.000	+/-	25.443
Cu	12971.703	+/-	224.187
Ni	1.000	+/-	31.062
Co	1.000	+/-	27.939
Fe	1164.209	+/-	74.638
Mn	1.000	+/-	61.732
Cr	1.000	+/-	19.271
V	1.000	+/-	14.345
Ti	1.000	+/-	74.975
Ca	16935.078	+/-	303.846
K	2574.764	+/-	173.623
Al	1499.327	+/-	474.078
P	629.493	+/-	78.280
Si	6692.426	+/-	322.091
Cl	3192.059	+/-	63.126
S	7099.354	+/-	128.311
Mg	1.000	+/-	4448.979

mRFA -Ergebnisse

XL3t-69288

Reading No 22
Mode Mining
Time 2020-07-29 12:16
Duration 120.86
Units ppm
Sigma Value 2
Sequence Final
Flags
INV NR Gm311
OBJEKT TAFELGEMAELEN
MATERIAL HOLZ METALL FASSUNG
ANALYSESTELLE P20 AERMEL MAGDA
MESSAUFBAU STATIV
FILTER m30lo30hi30li30
User Login Raquet



Ele	ppm	+/-	$\pm 2\sigma$
Ce	-339.000	+/-	133.013
La	1.000	+/-	61.074
Ba	1.000	+/-	64.717
Sb	1.000	+/-	27.536
Sn	2196.902	+/-	48.384
Cd	28.093	+/-	9.312
Ag	634.910	+/-	20.322
Bal	900653.750	+/-	899.792
Nb	35.901	+/-	21.912
Zr	1.000	+/-	74.670
Y	1.000	+/-	18.574
Sr	131.490	+/-	7.291
Rb	1.000	+/-	35.636
Th	1.000	+/-	1044.568
Bi	1.000	+/-	952.400
Au	1.000	+/-	25.243
As	5553.032	+/-	189.543
Se	1.000	+/-	15.483
Pb	30416.314	+/-	509.175
Hg	1.000	+/-	14.247
Zn	1.000	+/-	22.702
Cu	27609.408	+/-	470.935
Ni	1.000	+/-	35.687
Co	1.000	+/-	36.080
Fe	284.509	+/-	55.249
Mn	1.000	+/-	96.774
Cr	1.000	+/-	19.946
V	1.000	+/-	15.243
Ti	1.000	+/-	79.530
Ca	14740.724	+/-	287.009
K	3793.023	+/-	186.538
Al	661.718	+/-	419.462
P	455.478	+/-	64.264
Si	4964.678	+/-	265.393
Cl	3162.379	+/-	64.582
S	4677.608	+/-	95.205
Mg	1.000	+/-	4813.398

mRFA -Ergebnisse

XL3t-69288

Reading No 23
Mode Mining
Time 2020-07-29 12:21
Duration 121.90
Units ppm
Sigma Value 2
Sequence Final
Flags
INV NR Gm311
OBJEKT TAFELGEMAELEN
MATERIAL HOLZ METALL FASSUNG
ANALYSESTELLE P21 SALBGEFAESS
MESSAUFBAU STATIV
FILTER m30lo30hi30li30
User Login Raquet

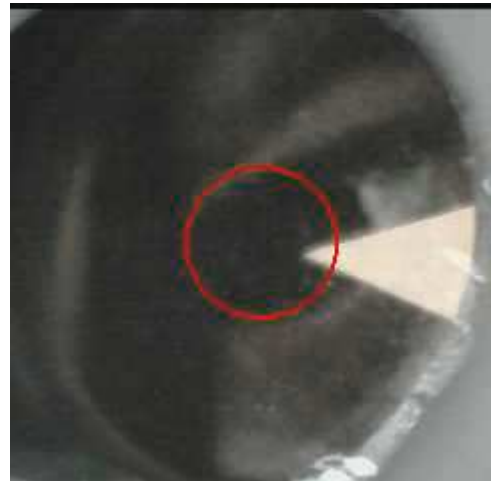


Ele	ppm	+/-	$\pm 2\sigma$
Ce	-339.000	+/-	99.545
La	1.000	+/-	45.640
Ba	1.000	+/-	48.953
Sb	1.000	+/-	16.306
Sn	866.249	+/-	22.840
Cd	16.515	+/-	6.901
Ag	12.433	+/-	4.625
Bal	912699.688	+/-	607.173
Nb	19.794	+/-	12.707
Zr	1.000	+/-	44.510
Y	1.000	+/-	10.681
Sr	168.288	+/-	6.008
Rb	22.724	+/-	21.468
Th	1.000	+/-	636.048
Bi	1.000	+/-	560.231
Au	2003.394	+/-	54.694
As	5028.584	+/-	125.062
Se	1.000	+/-	11.300
Pb	16976.439	+/-	231.713
Hg	1.000	+/-	9.508
Zn	116.687	+/-	13.869
Cu	192.079	+/-	19.600
Ni	1.000	+/-	27.706
Co	1.000	+/-	21.130
Fe	118.217	+/-	43.992
Mn	1.000	+/-	60.591
Cr	50.245	+/-	17.104
V	1.000	+/-	12.094
Ti	1.000	+/-	63.703
Ca	21855.596	+/-	349.721
K	1654.206	+/-	132.424
Al	1603.462	+/-	490.568
P	10971.783	+/-	230.305
Si	6143.522	+/-	349.070
Cl	1915.900	+/-	43.902
S	17564.289	+/-	270.950
Mg	1.000	+/-	5174.120

mRFA -Ergebnisse

XL3t-69288

Reading No 24
Mode Mining
Time 2020-07-29 12:26
Duration 121.42
Units ppm
Sigma Value 2
Sequence Final
Flags 3mm
INV NR Gm311
OBJEKT TAFELGEMAELENDE
MATERIAL HOLZ METALL FASSUNG
ANALYSESTELLE P22 AUGEN
MESSAUFBAU STATIV
FILTER m30lo30hi30li30
User Login Raquet

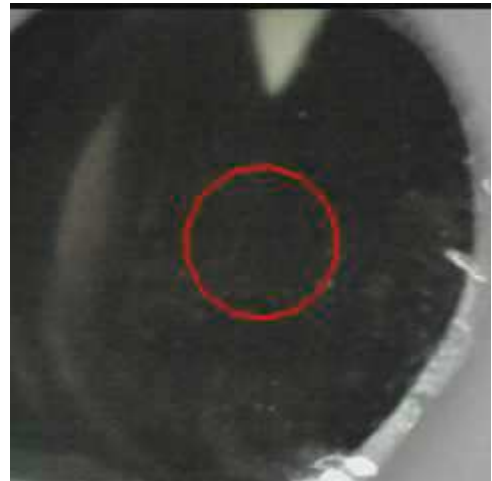


Ele	ppm	+/-	$\pm 2\sigma$
Ce	1.000	+/-	201.038
La	1.000	+/-	162.094
Ba	1.000	+/-	168.336
Sb	1.000	+/-	99.625
Sn	940.812	+/-	82.568
Cd	1.000	+/-	36.842
Ag	1.000	+/-	20.400
Bal	845870.313	+/-	2190.630
Nb	66.975	+/-	49.971
Zr	1.000	+/-	157.134
Y	1.000	+/-	41.632
Sr	176.600	+/-	14.928
Rb	1.000	+/-	105.688
Th	1.000	+/-	2218.375
Bi	1.000	+/-	1704.580
Au	1.000	+/-	55.401
As	10767.353	+/-	396.279
Se	33.286	+/-	22.900
Pb	57592.414	+/-	1386.741
Hg	1.000	+/-	35.503
Zn	281.178	+/-	34.289
Cu	7781.811	+/-	243.420
Ni	1.000	+/-	63.823
Co	1.000	+/-	98.975
Fe	8518.373	+/-	346.280
Mn	1.000	+/-	183.499
Cr	1.000	+/-	43.222
V	1.000	+/-	32.743
Ti	1.000	+/-	154.878
Ca	21808.695	+/-	597.131
K	2326.362	+/-	244.841
Al	2504.227	+/-	862.962
P	1286.217	+/-	165.863
Si	14436.859	+/-	754.570
Cl	5394.188	+/-	169.230
S	20214.383	+/-	522.354
Mg	1.000	+/-	8284.999

mRFA -Ergebnisse

XL3t-69288

Reading No 25
Mode Mining
Time 2020-07-29 12:31
Duration 121.75
Units ppm
Sigma Value 2
Sequence Final
Flags 3mm
INV NR Gm311
OBJEKT TAFELGEMAELEN
MATERIAL HOLZ METALL FASSUNG
ANALYSESTELLE P23 SAUM JOHANNES
MESSAUFBAU STATIV
FILTER m30lo30hi30li30
User Login Raquet

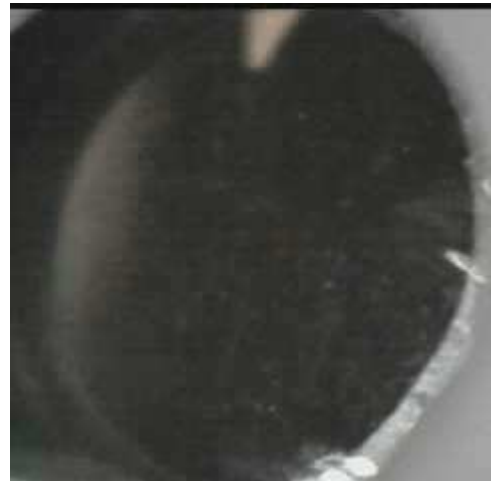


Ele	ppm	+/-	$\pm 2\sigma$
Ce	1.000	+/-	182.636
La	1.000	+/-	150.882
Ba	1.000	+/-	156.984
Sb	87.217	+/-	57.176
Sn	299.985	+/-	55.321
Cd	1.000	+/-	21.048
Ag	743.431	+/-	47.059
Bal	866491.063	+/-	1658.281
Nb	46.054	+/-	35.759
Zr	1.000	+/-	118.863
Y	1.000	+/-	30.210
Sr	86.739	+/-	9.910
Rb	1.000	+/-	73.764
Th	1.000	+/-	1588.455
Bi	1.000	+/-	1318.768
Au	758.188	+/-	73.751
As	5664.770	+/-	266.796
Se	1.000	+/-	27.002
Pb	40830.848	+/-	884.468
Hg	1.000	+/-	25.251
Zn	125.209	+/-	42.863
Cu	40212.664	+/-	808.265
Ni	56.119	+/-	49.101
Co	1.000	+/-	73.963
Fe	810.821	+/-	98.781
Mn	1.000	+/-	137.070
Cr	1.000	+/-	32.775
V	1.000	+/-	24.286
Ti	1.000	+/-	114.791
Ca	13879.764	+/-	362.628
K	4494.949	+/-	304.471
Al	1855.900	+/-	671.118
P	2630.541	+/-	143.175
Si	8896.770	+/-	518.152
Cl	4816.929	+/-	129.415
S	7211.957	+/-	175.400
Mg	1.000	+/-	7052.515

mRFA -Ergebnisse

XL3t-69288

Reading No 26
Mode Mining
Time 2020-07-29 12:35
Duration 121.60
Units ppm
Sigma Value 2
Sequence Final
Flags
INV NR Gm311
OBJEKT TAFELGEMAELEN
MATERIAL HOLZ METALL FASSUNG
ANALYSESTELLE P24 ROTLACK
MESSAUFBAU STATIV
FILTER m30lo30hi30li30
User Login Raquet



Ele	ppm	+/-	$\pm 2\sigma$
Ce	-339.000	+/-	107.556
La	1.000	+/-	49.341
Ba	1.000	+/-	52.543
Sb	1.000	+/-	17.538
Sn	301.765	+/-	15.267
Cd	14.792	+/-	7.158
Ag	1.000	+/-	4.704
Bal	902614.063	+/-	730.236
Nb	27.764	+/-	17.019
Zr	1.000	+/-	58.214
Y	1.000	+/-	14.249
Sr	160.143	+/-	6.545
Rb	1.000	+/-	33.659
Th	1.000	+/-	824.019
Bi	1.000	+/-	719.659
Au	1.000	+/-	19.629
As	6406.499	+/-	162.764
Se	1.000	+/-	16.666
Pb	25226.773	+/-	370.168
Hg	1.000	+/-	11.606
Zn	95.133	+/-	10.839
Cu	741.011	+/-	34.120
Ni	1.000	+/-	30.564
Co	1.000	+/-	39.724
Fe	3622.613	+/-	127.594
Mn	1.000	+/-	83.004
Cr	1.000	+/-	22.869
V	1.000	+/-	15.978
Ti	1.000	+/-	77.068
Ca	30895.422	+/-	490.305
K	2954.472	+/-	154.701
Al	2102.885	+/-	505.844
P	1061.851	+/-	96.748
Si	8696.109	+/-	368.571
Cl	2114.129	+/-	47.764
S	12964.601	+/-	218.167
Mg	1.000	+/-	5028.072

mRFA -Ergebnisse

XL3t-69288

Reading No 27
Mode Mining
Time 2020-07-29 12:43
Duration 120.92
Units ppm
Sigma Value 2
Sequence Final
Flags
INV NR Gm311
OBJEKT TAFELGEMAELEN
MATERIAL HOLZ METALL FASSUNG
ANALYSESTELLE P25 RETUSCHE
MESSAUFBAU STATIV
FILTER m30lo30hi30li30
User Login Raquet



Ele	ppm	+/-	$\pm 2\sigma$
Ce	-339.000	+/-	80.337
La	1.000	+/-	36.835
Ba	1.000	+/-	39.418
Sb	473.810	+/-	20.718
Sn	40.372	+/-	8.068
Cd	15.887	+/-	5.562
Ag	12.174	+/-	3.814
Bal	895322.938	+/-	664.433
Nb	27.014	+/-	11.633
Zr	1.000	+/-	40.932
Y	1.000	+/-	9.656
Sr	19.915	+/-	2.990
Rb	1.000	+/-	21.189
Th	1.000	+/-	589.748
Bi	1.000	+/-	544.208
Au	1.000	+/-	16.499
As	4361.902	+/-	113.226
Se	10.319	+/-	10.036
Pb	16799.443	+/-	219.408
Hg	1.000	+/-	10.460
Zn	252.136	+/-	14.880
Cu	371.601	+/-	22.639
Ni	1.000	+/-	24.378
Co	1.000	+/-	48.476
Fe	9130.712	+/-	194.920
Mn	1.000	+/-	85.757
Cr	1476.990	+/-	34.205
V	1.000	+/-	17.154
Ti	1.000	+/-	110.136
Ca	33486.473	+/-	462.929
K	3995.753	+/-	172.209
Al	2707.703	+/-	503.759
P	1246.165	+/-	101.938
Si	11980.104	+/-	408.249
Cl	1334.623	+/-	32.943
S	16933.932	+/-	236.528
Mg	1.000	+/-	6511.271

mRFA -Ergebnisse

XL3t-69288

Reading No 28
Mode Mining
Time 2020-07-29 12:47
Duration 121.29
Units ppm
Sigma Value 2
Sequence Final
Flags
INV NR Gm311
OBJEKT TAFELGEMAELEN
MATERIAL HOLZ METALL FASSUNG
ANALYSESTELLE P26 RETUSCHE
MESSAUFBAU STATIV
FILTER m30lo30hi30li30
User Login Raquet



Ele	ppm	+/-	$\pm 2\sigma$
Ce	-339.000	+/-	156.228
La	1.000	+/-	71.812
Ba	1.000	+/-	75.906
Sb	64.964	+/-	26.934
Sn	1.000	+/-	12.965
Cd	1.000	+/-	8.467
Ag	1.000	+/-	8.816
Bal	889952.000	+/-	1000.444
Nb	46.476	+/-	28.087
Zr	1.000	+/-	91.161
Y	1.000	+/-	23.413
Sr	157.157	+/-	8.583
Rb	1.000	+/-	56.021
Th	1.000	+/-	1247.960
Bi	1.000	+/-	964.771
Au	1.000	+/-	29.581
As	8881.415	+/-	240.796
Se	1.000	+/-	19.047
Pb	41600.035	+/-	685.547
Hg	1.000	+/-	16.983
Zn	233.539	+/-	17.478
Cu	39.510	+/-	19.014
Ni	1.000	+/-	37.460
Co	47.101	+/-	30.513
Fe	172.556	+/-	58.455
Mn	1.000	+/-	114.389
Cr	70.568	+/-	21.577
V	1.000	+/-	26.700
Ti	1.000	+/-	113.251
Ca	6937.768	+/-	179.532
K	1332.210	+/-	134.071
Al	1644.168	+/-	602.318
P	2095.672	+/-	149.170
Si	9364.005	+/-	431.112
Cl	3704.808	+/-	84.756
S	33656.043	+/-	625.617
Mg	1.000	+/-	11383.912