

mRFA -Ergebnisse

XL3t-69288

Reading No 1
Mode Mining
Time 2019-10-11 10:50
Duration 120.77
Units ppm
Sigma Value 2
Sequence Final
Flags
INV NR Gm310
OBJEKT TAFELGEMAELEN
MATERIAL HOLZ METALL FASSUNG
ANALYSESTELLE P1 HINTERGRUND
MESSAUFBAU STATIV
FILTER m30lo30hi30li30
User Login Raquet



	ppm	+/-	Error
Ce	-339.000	+/-	103.465
La	1.000	+/-	47.467
Ba	1.000	+/-	50.318
Sb	1.000	+/-	21.436
Sn	16.600	+/-	9.287
Cd	7.350	+/-	6.563
Ag	8.928	+/-	4.516
Bal	898332.125	+/-	809.272
Nb	67.466	+/-	19.945
Zr	1.000	+/-	75.404
Y	1.000	+/-	16.741
Sr	29.290	+/-	4.536
Rb	1.000	+/-	32.710
Th	1.000	+/-	930.736
Bi	1.000	+/-	1046.390
Au	1342.595	+/-	53.803
As	7004.468	+/-	187.882
Se	30.764	+/-	21.974
Pb	31845.803	+/-	492.464
Hg	1.000	+/-	13.610
Zn	132.300	+/-	14.632
Cu	156.687	+/-	20.450
Ni	1.000	+/-	31.948
Co	1.000	+/-	60.197
Fe	2073.744	+/-	101.882
Mn	1.000	+/-	66.077
Cr	1.000	+/-	30.226
V	1.000	+/-	23.398
Ti	1.000	+/-	96.784
Ca	29449.525	+/-	509.507
K	1725.564	+/-	137.194
Al	1026.256	+/-	455.207
P	2623.517	+/-	120.737
Si	5496.896	+/-	304.545
Cl	1687.909	+/-	42.349
S	16942.297	+/-	300.166
Mg	1.000	+/-	4657.717

mRFA -Ergebnisse

XL3t-69288

Reading No 2
Mode Mining
Time 2019-10-11 10:54
Duration 121.24
Units ppm
Sigma Value 2
Sequence Final
Flags
INV NR Gm310
OBJEKT TAFELGEMAELEN
MATERIAL HOLZ METALL FASSUNG
ANALYSESTELLE P2 HINTERGRUND HAARE
MESSAUFBAU STATIV
FILTER m30lo30hi30li30
User Login Raquet

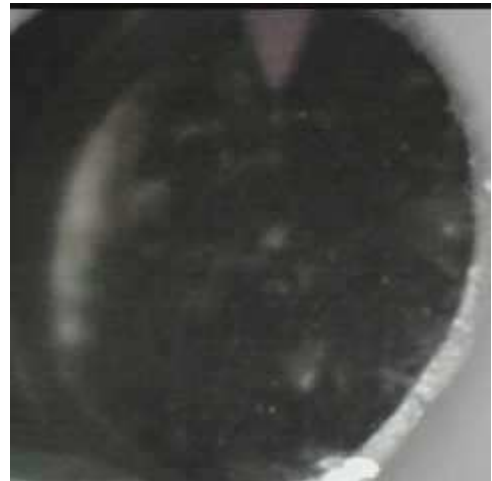


	ppm	+/-	Error
Ce	-339.000	+/-	61.163
La	1.000	+/-	28.067
Ba	1.000	+/-	30.406
Sb	18.175	+/-	11.466
Sn	56.415	+/-	6.980
Cd	19.199	+/-	4.711
Ag	12.696	+/-	3.236
Bal	900469.000	+/-	485.579
Nb	10.400	+/-	2.834
Zr	11.965	+/-	9.242
Y	1.000	+/-	1.799
Sr	18.189	+/-	1.745
Rb	4.511	+/-	4.267
Th	1.000	+/-	131.319
Bi	1.000	+/-	136.910
Au	711.851	+/-	21.919
As	312.014	+/-	22.222
Se	1.000	+/-	3.583
Pb	1158.536	+/-	19.928
Hg	166.858	+/-	6.804
Zn	67.423	+/-	9.211
Cu	338.165	+/-	17.701
Ni	1.000	+/-	18.382
Co	1.000	+/-	37.416
Fe	8162.533	+/-	131.085
Mn	1.000	+/-	41.728
Cr	44.396	+/-	17.269
V	42.511	+/-	18.131
Ti	707.977	+/-	105.584
Ca	68221.273	+/-	493.766
K	2812.157	+/-	141.924
Al	446.287	+/-	442.638
P	1940.870	+/-	94.538
Si	9525.121	+/-	371.293
Cl	755.110	+/-	25.885
S	3966.352	+/-	61.447
Mg	1.000	+/-	8429.258

mRFA -Ergebnisse

XL3t-69288

Reading No 3
Mode Mining
Time 2019-10-11 10:58
Duration 121.58
Units ppm
Sigma Value 2
Sequence Final
Flags
INV NR Gm310
OBJEKT TAFELGEMAELEN
MATERIAL HOLZ METALL FASSUNG
ANALYSESTELLE P3 BROKAT EHRENTUCH
MESSAUFBAU STATIV
FILTER m30lo30hi30li30
User Login Raquet

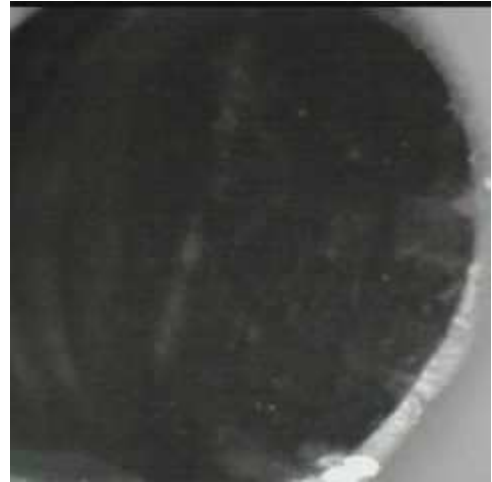


	ppm	+/-	Error
Ce	-339.000	+/-	99.966
La	1.000	+/-	45.438
Ba	1.000	+/-	48.366
Sb	1.000	+/-	15.515
Sn	10906.106	+/-	125.824
Cd	160.536	+/-	10.422
Ag	25.959	+/-	4.925
Bal	931948.688	+/-	463.247
Nb	1.000	+/-	9.958
Zr	1.000	+/-	30.288
Y	1.000	+/-	5.903
Sr	7.923	+/-	2.274
Rb	1.000	+/-	10.628
Th	1.000	+/-	366.773
Bi	1.000	+/-	376.046
Au	1.000	+/-	11.175
As	360.146	+/-	60.881
Se	1.000	+/-	7.382
Pb	5526.495	+/-	81.186
Hg	1.000	+/-	5.330
Zn	1.000	+/-	22.927
Cu	19591.127	+/-	253.266
Ni	1.000	+/-	30.479
Co	1.000	+/-	30.035
Fe	1549.276	+/-	79.167
Mn	1.000	+/-	58.002
Cr	19.845	+/-	16.080
V	1.000	+/-	13.627
Ti	83.823	+/-	74.161
Ca	15847.063	+/-	270.705
K	2411.331	+/-	173.294
Al	1.000	+/-	350.295
P	857.514	+/-	69.481
Si	4966.235	+/-	260.280
Cl	1619.136	+/-	34.281
S	4118.886	+/-	68.246
Mg	1.000	+/-	4022.059

mRFA -Ergebnisse

XL3t-69288

Reading No 4
Mode Mining
Time 2019-10-11 11:02
Duration 121.19
Units ppm
Sigma Value 2
Sequence Final
Flags
INV NR Gm310
OBJEKT TAFELGEMAELEN
MATERIAL HOLZ METALL FASSUNG
ANALYSESTELLE P4 BROKAT EHRENTUCH KELCH
MESSAUFBAU STATIV
FILTER m30lo30hi30li30
User Login Raquet



	ppm	+/-	Error
Ce	-339.000	+/-	104.447
La	1.000	+/-	47.304
Ba	1.000	+/-	50.592
Sb	1.000	+/-	16.229
Sn	12074.361	+/-	141.613
Cd	158.231	+/-	10.906
Ag	33.778	+/-	5.411
Bal	914491.063	+/-	632.127
Nb	1.000	+/-	9.287
Zr	1.000	+/-	28.584
Y	1.000	+/-	5.780
Sr	15.582	+/-	2.596
Rb	1.000	+/-	10.392
Th	1.000	+/-	359.558
Bi	1.000	+/-	341.940
Au	1.000	+/-	11.694
As	359.556	+/-	59.985
Se	1.000	+/-	8.161
Pb	4784.372	+/-	73.849
Hg	1.000	+/-	5.471
Zn	1.000	+/-	22.212
Cu	30328.820	+/-	357.871
Ni	1.000	+/-	32.646
Co	1.000	+/-	28.179
Fe	976.020	+/-	67.560
Mn	1.000	+/-	59.450
Cr	1.000	+/-	16.712
V	1.000	+/-	12.661
Ti	1.000	+/-	79.548
Ca	24273.900	+/-	330.060
K	1937.278	+/-	165.492
Al	518.554	+/-	419.898
P	797.652	+/-	71.787
Si	3421.859	+/-	239.031
Cl	1921.847	+/-	37.694
S	3907.112	+/-	65.962
Mg	1.000	+/-	4424.705

mRFA -Ergebnisse

XL3t-69288

Reading No 5
Mode Mining
Time 2019-10-11 11:06
Duration 120.74
Units ppm
Sigma Value 2
Sequence Final
Flags
INV NR Gm310
OBJEKT TAFELGEMAELEN
MATERIAL HOLZ METALL FASSUNG
ANALYSESTELLE P5 BROKAT EHRENTUCH SILBER
MESSAUFBAU STATIV
FILTER m30lo30hi30li30
User Login Raquet



	ppm	+/-	Error
Ce	-339.000	+/-	234.506
La	1.000	+/-	105.925
Ba	1.000	+/-	113.415
Sb	241.544	+/-	37.425
Sn	38553.871	+/-	578.130
Cd	258.832	+/-	22.304
Ag	51.711	+/-	10.295
Bal	842570.938	+/-	1530.886
Nb	17.229	+/-	12.077
Zr	1.000	+/-	60.213
Y	1.000	+/-	10.902
Sr	73.036	+/-	5.494
Rb	1.000	+/-	19.302
Th	1.000	+/-	630.914
Bi	1.000	+/-	695.160
Au	28.205	+/-	22.134
As	560.591	+/-	103.638
Se	1.000	+/-	16.275
Pb	9466.635	+/-	170.822
Hg	1.000	+/-	11.437
Zn	781.662	+/-	38.957
Cu	1245.648	+/-	59.173
Ni	1.000	+/-	58.622
Co	1.000	+/-	56.219
Fe	3350.524	+/-	161.484
Mn	1.000	+/-	103.422
Cr	124.573	+/-	26.499
V	1.000	+/-	28.783
Ti	1.000	+/-	118.139
Ca	71907.102	+/-	1128.467
K	2652.438	+/-	372.156
Al	1.000	+/-	985.882
P	710.733	+/-	145.379
Si	5340.414	+/-	481.363
Cl	1408.738	+/-	59.494
S	6631.454	+/-	144.028
Mg	14023.993	+/-	11869.087

mRFA -Ergebnisse

XL3t-69288

Reading No 6
Mode Mining
Time 2019-10-11 11:10
Duration 121.33
Units ppm
Sigma Value 2
Sequence Final
Flags
INV NR Gm310
OBJEKT TAFELGEMAELEN
MATERIAL HOLZ METALL FASSUNG
ANALYSESTELLE P6 BROKAT EHRENTUCH rechts
MESSAUFBAU STATIV
FILTER m30lo30hi30li30
User Login Raquet



	ppm	+/-	Error
Ce	-339.000	+/-	134.616
La	1.000	+/-	61.561
Ba	1.000	+/-	65.300
Sb	1.000	+/-	21.716
Sn	14272.611	+/-	202.904
Cd	179.236	+/-	15.009
Ag	24.733	+/-	6.816
Bal	844797.375	+/-	1263.539
Nb	36.401	+/-	16.158
Zr	1.000	+/-	73.116
Y	1.000	+/-	14.103
Sr	41.341	+/-	4.756
Rb	1.000	+/-	28.712
Th	1.000	+/-	815.629
Bi	1.000	+/-	884.354
Au	1.000	+/-	24.307
As	3506.854	+/-	145.078
Se	1.000	+/-	17.154
Pb	19924.936	+/-	320.496
Hg	1.000	+/-	14.672
Zn	115.118	+/-	19.738
Cu	8329.975	+/-	176.373
Ni	1.000	+/-	41.765
Co	1.000	+/-	102.767
Fe	26696.406	+/-	499.570
Mn	1621.622	+/-	121.744
Cr	78.610	+/-	30.262
V	61.622	+/-	29.275
Ti	1.000	+/-	244.473
Ca	51850.676	+/-	762.689
K	5068.579	+/-	245.954
Al	1.000	+/-	985.914
P	5400.844	+/-	169.348
Si	6774.169	+/-	396.153
Cl	2120.641	+/-	51.126
S	9098.305	+/-	160.363
Mg	1.000	+/-	7133.985

mRFA -Ergebnisse

XL3t-69288

Reading No 7
Mode Mining
Time 2019-10-11 11:15
Duration 121.23
Units ppm
Sigma Value 2
Sequence Final
Flags
INV NR Gm310
OBJEKT TAFELGEMAELEN
MATERIAL HOLZ METALL FASSUNG
ANALYSESTELLE P7 KELCH
MESSAUFBAU STATIV
FILTER m30lo30hi30li30
User Login Raquet



	ppm	+/-	Error
Ce	-339.000	+/-	55.181
La	1.000	+/-	25.334
Ba	1.000	+/-	27.438
Sb	1.000	+/-	13.643
Sn	26.336	+/-	6.697
Cd	16.007	+/-	4.159
Ag	314.062	+/-	8.139
Bal	919168.500	+/-	365.456
Nb	7.602	+/-	3.390
Zr	1.000	+/-	14.035
Y	1.000	+/-	2.380
Sr	20.930	+/-	1.693
Rb	5.405	+/-	5.274
Th	1.000	+/-	170.099
Bi	1.000	+/-	157.712
Au	443.375	+/-	17.780
As	644.048	+/-	30.850
Se	1.000	+/-	3.923
Pb	2138.336	+/-	29.265
Hg	1.000	+/-	3.029
Zn	82.070	+/-	9.217
Cu	1099.516	+/-	29.724
Ni	1.000	+/-	18.293
Co	1.000	+/-	22.771
Fe	2113.287	+/-	71.265
Mn	1.000	+/-	43.112
Cr	20.639	+/-	13.820
V	1.000	+/-	18.685
Ti	137.400	+/-	63.218
Ca	59127.512	+/-	460.993
K	2018.259	+/-	125.555
Al	1.000	+/-	567.674
P	3465.850	+/-	117.651
Si	3605.462	+/-	282.807
Cl	1217.794	+/-	31.673
S	4327.709	+/-	69.746
Mg	1.000	+/-	4243.991

mRFA -Ergebnisse

XL3t-69288

Reading No 9
Mode Mining
Time 2019-10-11 11:25
Duration 120.53
Units ppm
Sigma Value 2
Sequence Final
Flags
INV NR Gm310
OBJEKT TAFELGEMAELEN
MATERIAL HOLZ METALL FASSUNG
ANALYSESTELLE P8 RAHMEN
MESSAUFBAU STATIV
FILTER m30lo30hi30li30
User Login Raquet



	ppm	+/-	Error
Ce	-339.000	+/-	106.208
La	1.000	+/-	48.713
Ba	1.000	+/-	52.192
Sb	1.000	+/-	29.189
Sn	24.606	+/-	9.918
Cd	8.719	+/-	6.941
Ag	6.445	+/-	4.641
Bal	866470.500	+/-	962.814
Nb	39.574	+/-	15.431
Zr	1.000	+/-	53.210
Y	1.000	+/-	13.122
Sr	30.570	+/-	3.818
Rb	1.000	+/-	26.594
Th	1.000	+/-	758.146
Bi	1.000	+/-	752.187
Au	539.221	+/-	35.745
As	5452.109	+/-	148.880
Se	18.336	+/-	12.307
Pb	23050.107	+/-	333.562
Hg	1.000	+/-	10.909
Zn	131.689	+/-	15.760
Cu	5200.264	+/-	109.016
Ni	1.000	+/-	30.124
Co	1.000	+/-	41.051
Fe	4377.754	+/-	137.907
Mn	1.000	+/-	61.829
Cr	34.403	+/-	21.281
V	1.000	+/-	27.366
Ti	243.078	+/-	104.941
Ca	42108.859	+/-	615.771
K	2306.248	+/-	151.402
Al	3001.394	+/-	679.626
P	1807.292	+/-	125.315
Si	14032.771	+/-	521.835
Cl	1765.431	+/-	45.924
S	13875.690	+/-	227.260
Mg	15474.866	+/-	7178.180

mRFA -Ergebnisse

XL3t-69288

Reading No 10
Mode Mining
Time 2019-10-11 11:31
Duration 120.76
Units ppm
Sigma Value 2
Sequence Final
Flags
INV NR Gm310
OBJEKT TAFELGEMAELEN
MATERIAL HOLZ METALL FASSUNG
ANALYSESTELLE P9 BROKAT MANTEL
MESSAUFBAU STATIV
FILTER m30lo30hi30li30
User Login Raquet



	ppm	+/-	Error
Ce	-339.000	+/-	142.732
La	1.000	+/-	64.744
Ba	1.000	+/-	69.514
Sb	1.000	+/-	22.411
Sn	10890.351	+/-	173.065
Cd	241.895	+/-	15.615
Ag	438.859	+/-	16.948
Bal	861259.438	+/-	1242.598
Nb	1.000	+/-	25.463
Zr	1.000	+/-	61.467
Y	1.000	+/-	15.756
Sr	1.000	+/-	10.533
Rb	1.000	+/-	29.019
Th	1.000	+/-	865.376
Bi	1.000	+/-	790.323
Au	1.000	+/-	92.504
As	4984.935	+/-	160.536
Se	1.000	+/-	23.366
Pb	18746.941	+/-	315.899
Hg	9590.749	+/-	160.188
Zn	662.947	+/-	45.681
Cu	1064.167	+/-	49.591
Ni	1.000	+/-	44.616
Co	1.000	+/-	81.416
Fe	12008.168	+/-	298.368
Mn	346.186	+/-	96.672
Cr	27.697	+/-	24.535
V	27.725	+/-	23.790
Ti	1.000	+/-	164.804
Ca	14521.988	+/-	296.442
K	3449.711	+/-	197.043
Al	832.763	+/-	601.991
P	15398.548	+/-	321.237
Si	6615.850	+/-	405.523
Cl	2413.832	+/-	55.772
S	36477.195	+/-	579.475
Mg	1.000	+/-	6909.717

mRFA -Ergebnisse

XL3t-69288

Reading No 11
Mode Mining
Time 2019-10-11 11:35
Duration 121.00
Units ppm
Sigma Value 2
Sequence Final
Flags
INV NR Gm310
OBJEKT TAFELGEMAELEN
MATERIAL HOLZ METALL FASSUNG
ANALYSESTELLE P10 BROKAT MANTEL
MESSAUFBAU STATIV
FILTER m30lo30hi30li30
User Login Raquet



	ppm	+/-	Error
Ce	-339.000	+/-	113.614
La	1.000	+/-	51.878
Ba	1.000	+/-	55.645
Sb	1.000	+/-	18.402
Sn	4710.466	+/-	69.319
Cd	70.012	+/-	9.467
Ag	166.472	+/-	9.467
Bal	858787.375	+/-	995.119
Nb	1.000	+/-	13.740
Zr	1.000	+/-	37.018
Y	1.000	+/-	9.120
Sr	88.379	+/-	7.998
Rb	1.000	+/-	16.895
Th	1.000	+/-	536.403
Bi	1.000	+/-	487.742
Au	71.234	+/-	50.206
As	2112.341	+/-	92.951
Se	1.000	+/-	14.094
Pb	10407.769	+/-	149.238
Hg	5468.228	+/-	81.302
Zn	192.092	+/-	27.019
Cu	834.087	+/-	37.304
Ni	1.000	+/-	34.302
Co	1.000	+/-	58.286
Fe	8771.850	+/-	208.079
Mn	133.058	+/-	74.549
Cr	55.995	+/-	20.861
V	30.015	+/-	19.489
Ti	137.051	+/-	103.693
Ca	68282.555	+/-	811.837
K	3494.697	+/-	174.156
Al	1605.636	+/-	662.594
P	8625.709	+/-	217.197
Si	5977.108	+/-	406.262
Cl	1647.159	+/-	43.061
S	18330.775	+/-	247.477
Mg	1.000	+/-	7191.306

mRFA -Ergebnisse

XL3t-69288

Reading No 12
Mode Mining
Time 2019-10-11 11:39
Duration 122.15
Units ppm
Sigma Value 2
Sequence Final
Flags
INV NR Gm310
OBJEKT TAFELGEMAELEN
MATERIAL HOLZ METALL FASSUNG
ANALYSESTELLE P11 BROKAT MANTEL neu
MESSAUFBAU STATIV
FILTER m30lo30hi30li30
User Login Raquet



	ppm	+/-	Error
Ce	-339.000	+/-	58.023
La	1.000	+/-	26.628
Ba	1.000	+/-	28.639
Sb	10.880	+/-	10.738
Sn	33.882	+/-	6.192
Cd	14.889	+/-	4.333
Ag	24.438	+/-	3.426
Bal	949250.938	+/-	273.824
Nb	8.467	+/-	3.503
Zr	1.000	+/-	15.825
Y	1.000	+/-	2.417
Sr	18.816	+/-	2.048
Rb	6.013	+/-	5.657
Th	1.000	+/-	175.410
Bi	1.000	+/-	168.156
Au	1145.923	+/-	29.065
As	542.194	+/-	29.779
Se	1.000	+/-	4.690
Pb	2003.927	+/-	28.573
Hg	381.256	+/-	10.284
Zn	45.699	+/-	9.886
Cu	233.469	+/-	15.891
Ni	1.000	+/-	18.798
Co	1.000	+/-	28.423
Fe	3817.500	+/-	93.432
Mn	1.000	+/-	46.456
Cr	37.709	+/-	16.515
V	1.000	+/-	14.365
Ti	1.000	+/-	96.848
Ca	26947.461	+/-	272.889
K	1485.847	+/-	104.317
Al	1.000	+/-	411.258
P	6114.802	+/-	115.738
Si	1603.730	+/-	188.005
Cl	1191.782	+/-	25.037
S	5080.399	+/-	64.236
Mg	1.000	+/-	3048.856