

mRFA -Ergebnisse

XL3t-69288

Reading No 3  
Mode Mining  
Time 2021-01-20 14:37  
Duration 120.26  
Units ppm  
Sigma Value 2  
Sequence Final  
Flags  
INV NR Gm1463  
OBJEKT TAFELGEMAELEN  
MATERIAL HOLZ METALL FASSUNG  
ANALYSESTELLE P1 NIMBUS CHRISTI  
MESSAUFBAU STATIV  
FILTER m30lo30hi30li30  
User Login Raquet



Ele	ppm	+/-	$\pm 2\sigma$
Mg	1.000	+/-	5957.526
Al	5199.842	+/-	690.250
Bal	856893.750	+/-	840.982
Si	26955.063	+/-	686.484
P	34494.719	+/-	456.952
S	16123.677	+/-	207.069
Cl	827.825	+/-	31.119
K	2652.819	+/-	150.395
Ca	26954.699	+/-	356.772
Ti	608.056	+/-	115.761
V	41.264	+/-	20.449
Cr	134.915	+/-	20.475
Mn	1.000	+/-	55.988
Fe	10943.337	+/-	202.759
Co	1.000	+/-	51.308
Ni	1.000	+/-	25.393
Cu	225.032	+/-	18.868
Zn	133.798	+/-	16.485
As	2775.519	+/-	79.781
Se	1.000	+/-	10.881
Rb	38.361	+/-	14.962
Sr	206.660	+/-	5.778
Y	1.000	+/-	7.130
Zr	1.000	+/-	30.360
Nb	8.771	+/-	8.476
Ag	34.662	+/-	5.150
Cd	8.495	+/-	6.161
Sn	237.195	+/-	12.856
Sb	1.000	+/-	15.087
Ba	1.000	+/-	45.922
La	1.000	+/-	41.870
Ce	-339.000	+/-	90.971
Au	4928.096	+/-	81.433
Hg	1.000	+/-	8.307
Pb	9573.401	+/-	119.960
Bi	1.000	+/-	423.876
Th	1.000	+/-	440.238

mRFA -Ergebnisse

XL3t-69288

Reading No 4  
Mode Mining  
Time 2021-01-20 14:41  
Duration 120.44  
Units ppm  
Sigma Value 2  
Sequence Final  
Flags  
INV NR Gm1463  
OBJEKT TAFELGEMAELEN  
MATERIAL HOLZ METALL FASSUNG  
ANALYSESTELLE P2 NIMBUS MAGDA  
MESSAUFBAU STATIV  
FILTER m30lo30hi30li30  
User Login Raquet



Ele	ppm	+/-	$\pm 2\sigma$
Mg	1.000	+/-	10134.522
Al	4176.652	+/-	822.183
Bal	818115.000	+/-	1535.614
Si	16953.916	+/-	644.866
P	17905.525	+/-	391.910
S	20322.309	+/-	373.806
Cl	1319.778	+/-	43.312
K	2487.896	+/-	182.562
Ca	62169.742	+/-	1022.570
Ti	146.021	+/-	110.856
V	1.000	+/-	20.237
Cr	36.956	+/-	23.018
Mn	88.566	+/-	80.423
Fe	1738.321	+/-	105.021
Co	1.000	+/-	37.295
Ni	1.000	+/-	43.288
Cu	149.171	+/-	23.021
Zn	156.324	+/-	16.136
As	9601.186	+/-	255.241
Se	18.559	+/-	15.769
Rb	1.000	+/-	46.082
Sr	153.677	+/-	8.477
Y	1.000	+/-	23.114
Zr	1.000	+/-	90.375
Nb	69.225	+/-	27.809
Ag	1.000	+/-	5.398
Cd	8.968	+/-	8.540
Sn	419.592	+/-	20.245
Sb	1.000	+/-	25.717
Ba	1.000	+/-	94.459
La	1.000	+/-	62.879
Ce	-339.000	+/-	137.122
Au	642.869	+/-	51.591
Hg	1.000	+/-	18.190
Pb	43319.809	+/-	723.722
Bi	1.000	+/-	1289.669
Th	1.000	+/-	1262.779

mRFA -Ergebnisse

XL3t-69288

Reading No 5  
Mode Mining  
Time 2021-01-20 14:45  
Duration 121.29  
Units ppm  
Sigma Value 2  
Sequence Final  
Flags 3mm  
INV NR Gm1463  
OBJEKT TAFELGEMAELEN  
MATERIAL HOLZ METALL FASSUNG  
ANALYSESTELLE P3 NIMBUS MAGDA  
MESSAUFBAU STATIV  
FILTER m30lo30hi30li30  
User Login Raquet



Ele	ppm	+/-	$\pm 2\sigma$
Mg	1.000	+/-	8092.244
Al	2855.202	+/-	879.985
Bal	836298.688	+/-	1585.802
Si	9998.923	+/-	723.017
P	35595.578	+/-	699.340
S	18560.934	+/-	353.217
Cl	1463.233	+/-	64.744
K	2601.925	+/-	222.139
Ca	71766.773	+/-	1241.058
Ti	171.796	+/-	162.614
V	1.000	+/-	34.143
Cr	78.904	+/-	29.611
Mn	1.000	+/-	102.162
Fe	3462.296	+/-	185.236
Co	1.000	+/-	59.376
Ni	1.000	+/-	38.071
Cu	338.960	+/-	36.066
Zn	140.636	+/-	22.948
As	2873.176	+/-	131.330
Se	1.000	+/-	15.124
Rb	1.000	+/-	32.975
Sr	237.913	+/-	10.492
Y	1.000	+/-	12.634
Zr	1.000	+/-	52.030
Nb	1.000	+/-	19.535
Ag	1.000	+/-	13.074
Cd	20.919	+/-	14.968
Sn	362.897	+/-	38.620
Sb	1.000	+/-	48.243
Ba	1.000	+/-	153.616
La	1.000	+/-	98.798
Ce	1.000	+/-	121.566
Au	1872.840	+/-	79.764
Hg	1.000	+/-	13.697
Pb	11298.514	+/-	228.764
Bi	1.000	+/-	698.182
Th	1.000	+/-	728.340

mRFA -Ergebnisse

XL3t-69288

Reading No 6  
Mode Mining  
Time 2021-01-20 14:49  
Duration 121.28  
Units ppm  
Sigma Value 2  
Sequence Final  
Flags  
INV NR Gm1463  
OBJEKT TAFELGEMAELEN  
MATERIAL HOLZ METALL FASSUNG  
ANALYSESTELLE P4 MANTEL SIMON LACK  
MESSAUFBAU STATIV  
FILTER m30lo30hi30li30  
User Login Raquet



Ele	ppm	+/-	$\pm 2\sigma$
Mg	1.000	+/-	5594.315
Al	7876.530	+/-	773.742
Bal	889694.375	+/-	731.270
Si	11891.370	+/-	461.437
P	1581.498	+/-	126.891
S	19133.873	+/-	251.885
Cl	1957.881	+/-	44.523
K	2895.104	+/-	153.491
Ca	45548.641	+/-	567.442
Ti	1.000	+/-	107.929
V	1.000	+/-	16.277
Cr	1.000	+/-	25.357
Mn	1.000	+/-	60.908
Fe	679.011	+/-	61.428
Co	1.000	+/-	24.710
Ni	1.000	+/-	28.745
Cu	414.218	+/-	25.262
Zn	354.092	+/-	26.501
As	3072.503	+/-	88.662
Se	9.682	+/-	9.174
Rb	1.000	+/-	15.434
Sr	124.048	+/-	7.565
Y	1.000	+/-	7.938
Zr	1.000	+/-	33.149
Nb	1.000	+/-	12.021
Ag	1.000	+/-	3.623
Cd	10.396	+/-	5.809
Sn	28.872	+/-	8.276
Sb	1.000	+/-	14.233
Ba	1.000	+/-	42.546
La	1.000	+/-	39.177
Ce	-339.000	+/-	85.607
Au	1.000	+/-	41.641
Hg	5102.920	+/-	70.960
Pb	9625.080	+/-	129.748
Bi	1.000	+/-	416.018
Th	1.000	+/-	480.148

mRFA -Ergebnisse

XL3t-69288

Reading No 7  
Mode Mining  
Time 2021-01-20 14:53  
Duration 120.79  
Units ppm  
Sigma Value 2  
Sequence Final  
Flags  
INV NR Gm1463  
OBJEKT TAFELGEMAELEN  
MATERIAL HOLZ METALL FASSUNG  
ANALYSESTELLE P5 MANTEL SIMON  
MESSAUFBAU STATIV  
FILTER m30lo30hi30li30  
User Login Raquet



Ele	ppm	+/-	$\pm 2\sigma$
Mg	1.000	+/-	6669.160
Al	2242.047	+/-	647.259
Bal	879159.375	+/-	1024.008
Si	8402.082	+/-	434.490
P	10134.887	+/-	247.171
S	36713.441	+/-	534.316
Cl	1862.996	+/-	47.150
K	1960.495	+/-	160.958
Ca	24497.121	+/-	414.707
Ti	1.000	+/-	103.725
V	1.000	+/-	30.536
Cr	1.000	+/-	26.072
Mn	142.533	+/-	85.588
Fe	142.218	+/-	61.932
Co	1.000	+/-	51.118
Ni	1.000	+/-	58.867
Cu	338.082	+/-	29.812
Zn	779.962	+/-	50.036
As	5307.233	+/-	140.545
Se	14.176	+/-	12.791
Rb	1.000	+/-	24.486
Sr	1.000	+/-	12.935
Y	1.000	+/-	13.347
Zr	1.000	+/-	51.782
Nb	1.000	+/-	14.098
Ag	1.000	+/-	4.603
Cd	13.136	+/-	8.006
Sn	72.148	+/-	12.302
Sb	1.000	+/-	20.065
Ba	1.000	+/-	60.703
La	1.000	+/-	56.146
Ce	-339.000	+/-	122.733
Au	1.000	+/-	86.503
Hg	14557.020	+/-	212.172
Pb	13661.082	+/-	221.572
Bi	1.000	+/-	564.980
Th	1.000	+/-	730.671

mRFA -Ergebnisse

XL3t-69288

Reading No 8  
Mode Mining  
Time 2021-01-20 14:57  
Duration 122.04  
Units ppm  
Sigma Value 2  
Sequence Final  
Flags  
INV NR Gm1463  
OBJEKT TAFELGEMAELEN  
MATERIAL HOLZ METALL FASSUNG  
ANALYSESTELLE P6 GEWAND LINKER DIENER  
MESSAUFBAU STATIV  
FILTER m30lo30hi30li30  
User Login Raquet

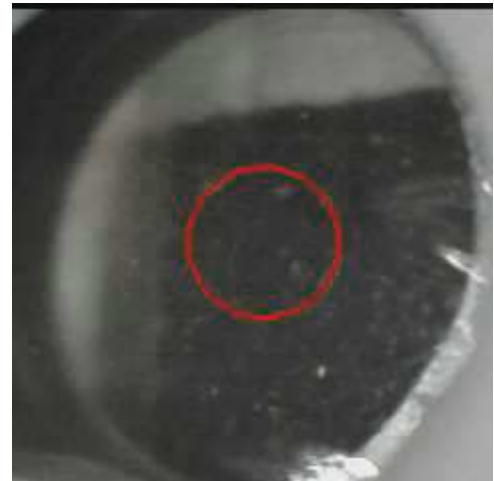


Ele	ppm	+/-	$\pm 2\sigma$
Mg	1.000	+/-	5409.813
Al	4003.103	+/-	623.704
Bal	895720.500	+/-	673.294
Si	7117.148	+/-	362.227
P	1184.305	+/-	119.287
S	21108.947	+/-	302.306
Cl	1636.275	+/-	40.771
K	3161.655	+/-	153.488
Ca	40431.223	+/-	554.234
Ti	1.000	+/-	94.554
V	1.000	+/-	18.147
Cr	650.182	+/-	24.922
Mn	1.000	+/-	57.767
Fe	469.216	+/-	51.768
Co	1.000	+/-	22.103
Ni	1.000	+/-	26.144
Cu	3629.483	+/-	77.690
Zn	82.855	+/-	11.556
As	4202.943	+/-	113.492
Se	1.000	+/-	14.304
Rb	1.000	+/-	19.213
Sr	193.221	+/-	6.036
Y	1.000	+/-	9.736
Zr	1.000	+/-	41.082
Nb	22.894	+/-	11.667
Ag	1.000	+/-	5.149
Cd	1.000	+/-	8.936
Sn	19.339	+/-	8.537
Sb	1.000	+/-	15.086
Ba	1.000	+/-	45.294
La	1.000	+/-	41.734
Ce	-339.000	+/-	91.175
Au	1.000	+/-	14.704
Hg	1.000	+/-	8.579
Pb	16366.763	+/-	219.767
Bi	1.000	+/-	581.570
Th	1.000	+/-	593.086

mRFA -Ergebnisse

XL3t-69288

Reading No 9  
Mode Mining  
Time 2021-01-20 15:01  
Duration 121.06  
Units ppm  
Sigma Value 2  
Sequence Final  
Flags 3mm  
INV NR Gm1463  
OBJEKT TAFELGEMAELEN  
MATERIAL HOLZ METALL FASSUNG  
ANALYSESTELLE P7 SCHATTEN  
MESSAUFBAU STATIV  
FILTER m30lo30hi30li30  
User Login Raquet



Ele	ppm	+/-	$\pm 2\sigma$
Mg	1.000	+/-	7601.330
Al	4198.367	+/-	857.886
Bal	838996.750	+/-	1472.274
Si	24372.340	+/-	853.225
P	457.575	+/-	138.270
S	15053.720	+/-	261.321
Cl	1930.058	+/-	66.819
K	2276.527	+/-	197.712
Ca	99104.492	+/-	1446.812
Ti	375.331	+/-	127.561
V	1.000	+/-	30.000
Cr	53.543	+/-	28.459
Mn	1.000	+/-	92.588
Fe	3146.222	+/-	169.134
Co	1.000	+/-	55.260
Ni	1.000	+/-	33.235
Cu	136.897	+/-	25.512
Zn	129.841	+/-	17.268
As	1926.915	+/-	101.050
Se	1.000	+/-	11.963
Rb	1.000	+/-	19.738
Sr	210.400	+/-	9.019
Y	1.000	+/-	9.577
Zr	1.000	+/-	39.985
Nb	1.000	+/-	15.085
Ag	8.842	+/-	8.503
Cd	1.000	+/-	20.501
Sn	29.783	+/-	21.848
Sb	1.000	+/-	39.884
Ba	1.000	+/-	91.309
La	1.000	+/-	86.576
Ce	1.000	+/-	103.973
Au	1.000	+/-	16.704
Hg	1.000	+/-	9.263
Pb	7592.401	+/-	150.149
Bi	1.000	+/-	546.626
Th	1.000	+/-	564.408